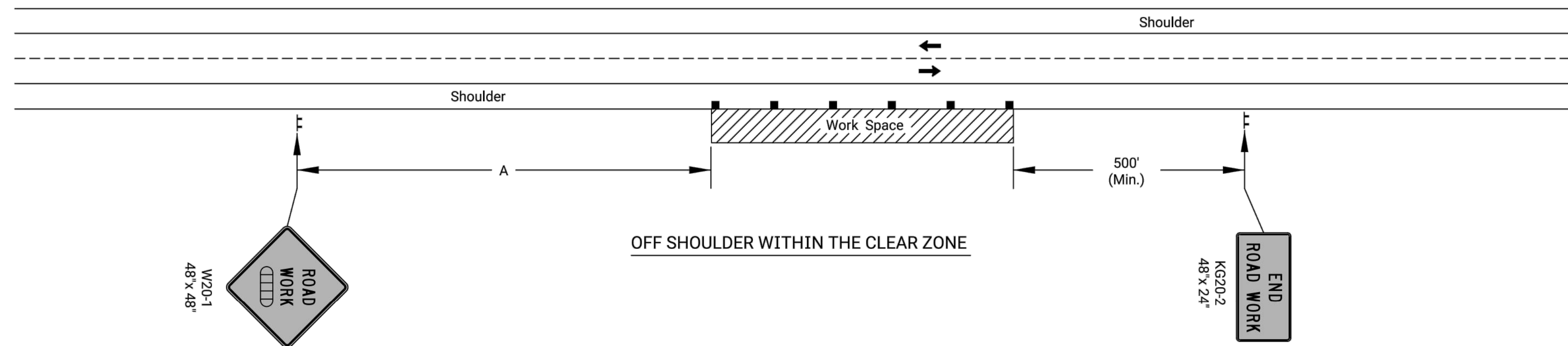


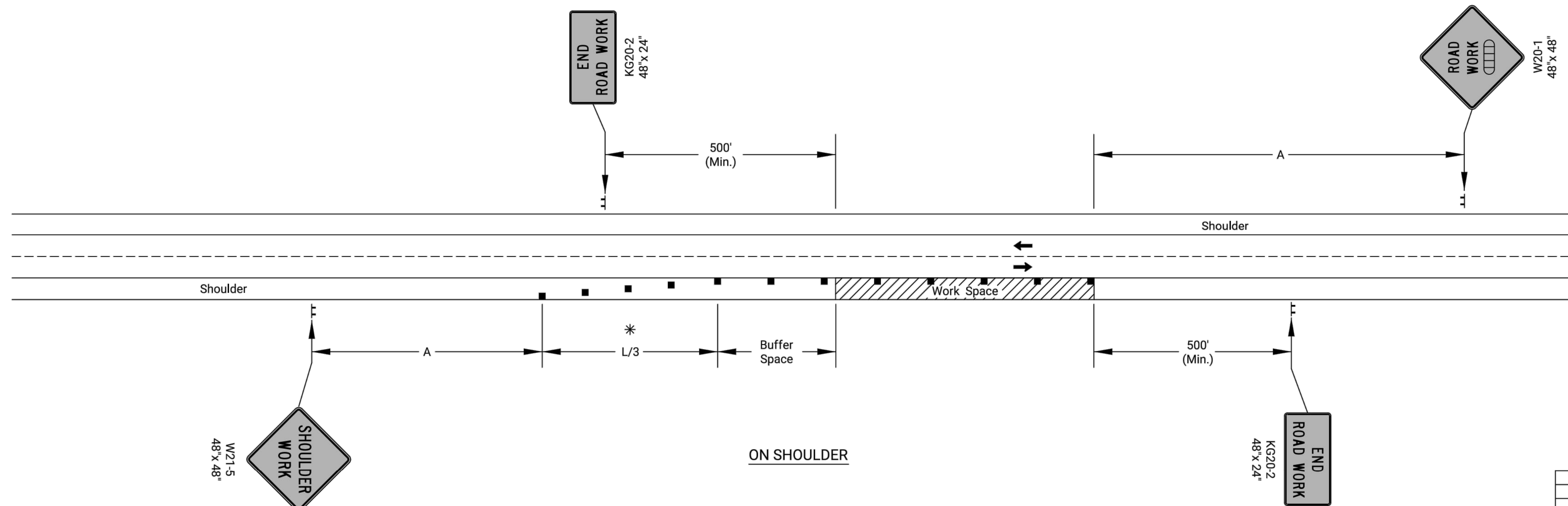
STATE	PROJECT NO.	YEAR	SHEET NO.	TOTAL SHEETS
KANSAS	472-2023-085940	2024	30	35



Notes:

No traffic control is required if the Work Space is located outside of the clear zone.

For operations of 60 minutes or less, all signs and channelizing devices may be eliminated if a vehicle with high-intensity rotating, flashing, oscillating, or strobe lights is used.



* Omit taper if paved shoulder is less than 8' wide.

- Channelizing Device
- ◻ Ahead, 1500 ft, or 1 Mile

NO.	DATE	REVISIONS	BY	APPD

KANSAS DEPARTMENT OF TRANSPORTATION

**TRAFFIC CONTROL
SHOULDER WORK
UNDIVIDED ROADWAY**

TE720

DESIGNED	L.E.R.	APPD.	06-01-15	Kristina Ericksen
DETAIL CK.	DETAIL CK.	QUANTITIES	QUAN.	TRACED
DESIGN CK.	DESIGN CK.	QUAN. CK.	QUAN. CK.	TRACE CK.