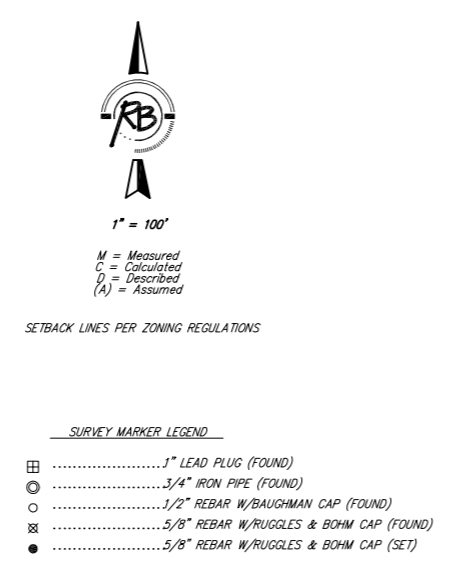
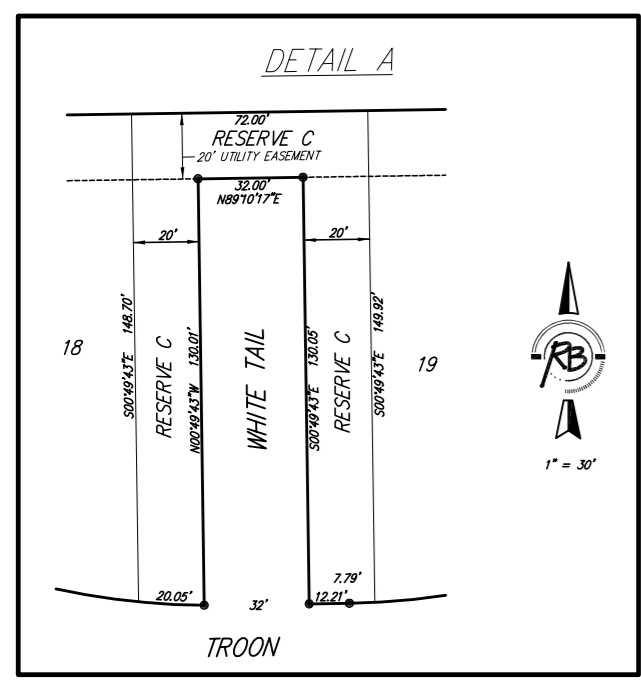
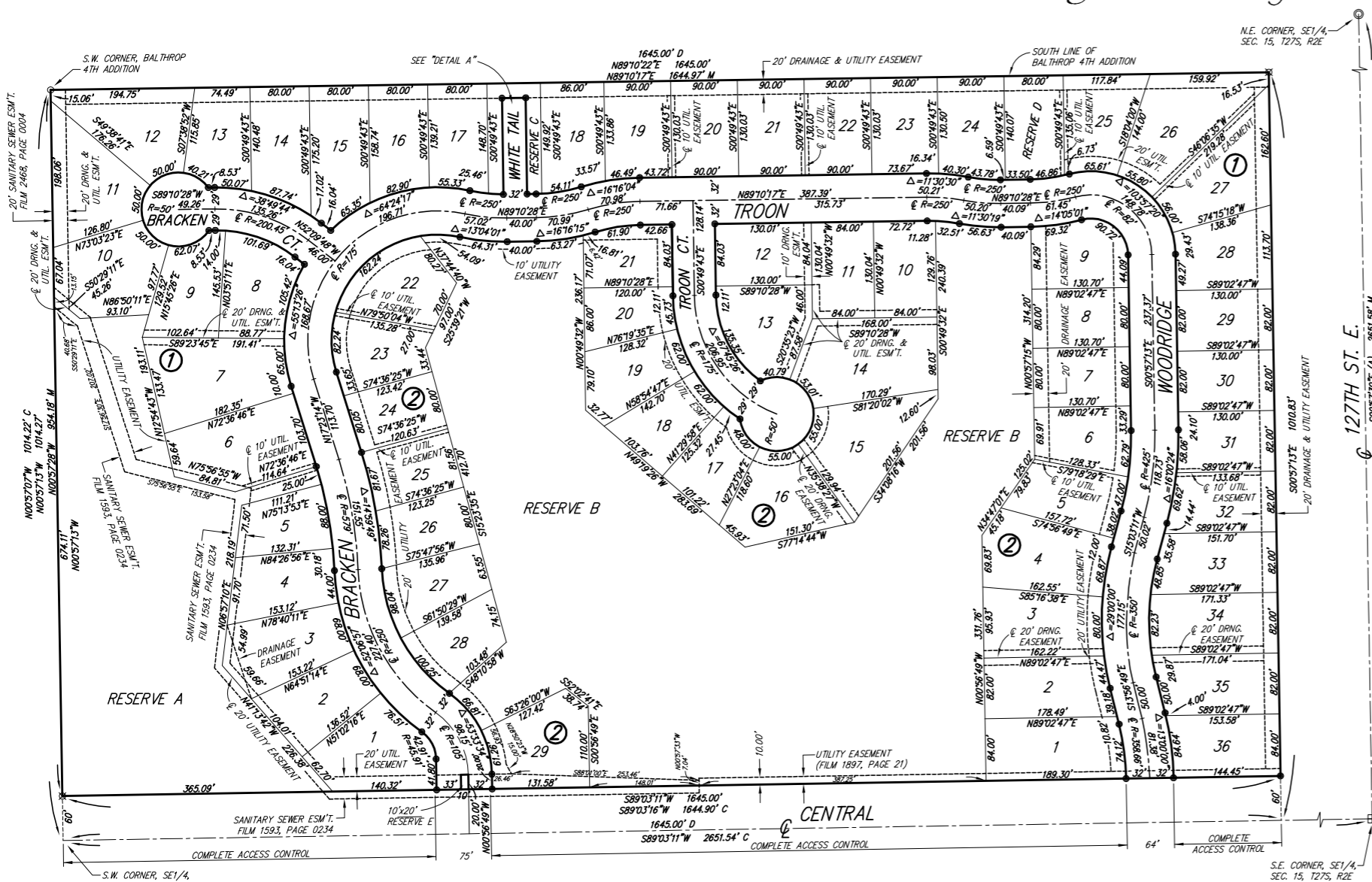


CRESTLAKE

Wichita, Sedgwick County, Kansas



BENCH MARK: CITY OF WICHITA DISK, 24.00' WEST OF THE CENTERLINE OF WHEATLAND (127TH ST. E.) AND 35.50 FEET SOUTH OF THE CENTERLINE OF CENTRAL
 ELEV. = 154.90 (CITY DATUM)
 ELEV. = 1342.30 (M.S.L.)

BLOCK	LOT NO.	ELEVATION (N.G.V.D.)
1	1, 2, 3, 4, 5, 6, 7, 8, 9, 10	1352.0
1	24, 25	1358.0
2	1, 2, 3, 4, 5, 6, 7, 8, 9, 10, 11, 12, 13, 14, 15, 16, 17, 18, 19, 20, 21, 22, 23, 24, 25, 26, 27, 28, 29	1356.0

State of Kansas) SS
 Sedgwick County)

We, Ruggles & Bohm, P.A., Land Surveyors in aforesaid county and state, do hereby certify that, under the supervision of the undersigned, we have surveyed and platted "CRESTLAKE", Wichita, Sedgwick County, Kansas, and that the accompanying plat is a true and correct exhibit of the property surveyed, described as follows:

LEGAL DESCRIPTION:
 The west 1645 feet of the south 60 acres of the SE1/4 of Sec. 15, T27S, R2E of the 6th P.M., Sedgwick County, Kansas, EXCEPT the south 60 feet for road.

Ruggles & Bohm, P.A.

Land Surveyor
 Thomas C. Ruggles

Know all men by these presents that we, the undersigned, have caused the land described in the surveyor's certificate to be platted into Lots, Blocks, Reserves and Streets to be known as "CRESTLAKE", Wichita, Sedgwick County, Kansas. Utility easements are hereby granted for the construction and maintenance of all public utilities. Drainage easements are hereby granted to the public as indicated for drainage purposes. Reserve "A" is hereby reserved for irrigation, landscaping, drainage, drainage structures and utilities confined to easements. Reserves "B and D" are hereby reserved for irrigation, landscaping, drainage, drainage structures, ponds and utilities confined to easements. Reserve "C" is hereby reserved for an Emergency Access Easement and open space. It shall permit utilities, drainage, drainage structures and a gate for emergency access purposes. Reserve "E" is hereby reserved for entry features, signage, irrigation, lighting and landscaping. The Reserves shall be owned and maintained by the Home Owners Association for the addition. The streets are hereby dedicated to and for the use of the public. Access Controls as indicated are hereby granted to the appropriate governing body. A drainage plan has been developed for this plat; all drainage easements and reserves shall remain at established grades, or as modified with the approval of the City Engineer, and unobstructed to allow for the conveyance of storm water.

RRT L.L.C.

President
 Tim Buchanan

State of Kansas) SS
 Sedgwick County)

The foregoing instrument acknowledged before me, this _____ day of _____, 2006, by Tim Buchanan, President, on behalf of RRT L.L.C.

Notary Public

My appointment expires _____

This plat of "CRESTLAKE", Wichita, Sedgwick County, Kansas, has been submitted to and approved by the Wichita-Sedgwick County Metropolitan Area Planning Commission, Wichita, Kansas.

Dated this _____ day of _____, 2006.

Wichita-Sedgwick County Metropolitan Area Planning Commission

Chair
 Harold L. Warner, Jr.

Secretary
 John L. Schlegel

This plat approved and all dedications shown hereon accepted by the City Council of the City of Wichita, Kansas, this _____ day of _____, 2006.

At the Direction of the City Council

Mayor
 Carlos Mayans

City Clerk
 Karen Sublett

Reviewed in accordance with K.S.A. 58-2005 on this _____ day of _____, 2006.

Deputy County Surveyor
 Sedgwick County Kansas
 Tricia L. Robello, LS #1246

Entered on transfer record this _____ day of _____, 2006.

County Clerk
 Don Brace

State of Kansas) SS
 Sedgwick County)

This is to certify that this plat has been filed for record in the office of the Register of Deeds, this _____ day of _____, 2006, at _____ o'clock _____ M., and is duly recorded.

Register of Deeds
 Bill Meek

Deputy
 Tonya Buckingham



Ruggles & Bohm, P.A.
 Engineering, Surveying, Land Planning

924 North Main (316) 264-8008
 Wichita, Kansas 67203 (316) 264-4621 fax
 www.rbkansas.com E-mail: info@rbkansas.com

DWG FILE: SURVEY BASE
 PROJECT NO. 2545K
 MARCH 22, 2006