

# SANITARY SEWER PLANS

# COUNTRY HOLLOW ADDITION

Note: Tied with project 468-84104  
Lat. 388, FMC

**MKEC**  
ENGINEERING  
CONSULTANTS, INC.

411 N. WEBB ROAD  
WICHITA, K.S. 67206  
316-684-9600

SANITARY SEWER PLANS  
**COUNTRY HOLLOW**  
PHASE 1A

**TITLE SHEET**

SHEET TITLE  
**468-84102**  
PROJECT NUMBER

DESIGN BY  
**DFL**

DRAWN BY  
**KKL/DMU**

CHECKED BY  
**GJA**

ISSUED  
**JANUARY 2006**

REVISED

SHEET NO.

1 of 10

## GENERAL NOTES

- UNLESS SHOWN OR STATED OTHERWISE ON THESE DRAWINGS, MATERIALS AND CONSTRUCTION SHALL BE IN ACCORDANCE WITH CITY OF WICHITA STANDARD SPECIFICATIONS.
- CONTRACTOR WILL BE REQUIRED TO PROVIDE A MINIMUM ADVANCE NOTICE OF SEVENTY-TWO (72) HOURS TO UTILITY COMPANIES PRIOR TO STARTING ANY EXCAVATION AS FOLLOWS:

KANSAS ONE-CALL 1-800-344-7233  
or 687-2470 (LOCAL WICHITA)

THE CONTRACTOR MUST NOTIFY THE FOLLOWING IN CASE OF AN EMERGENCY:

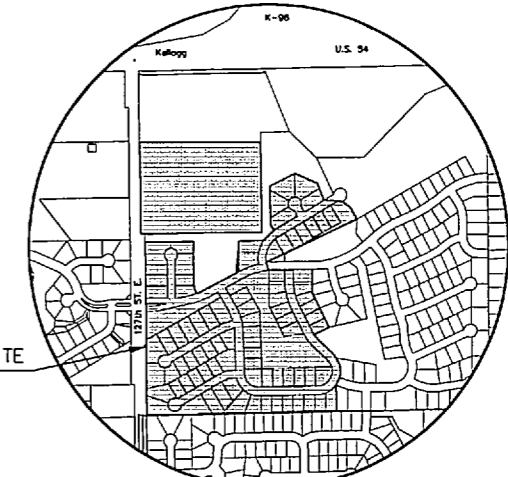
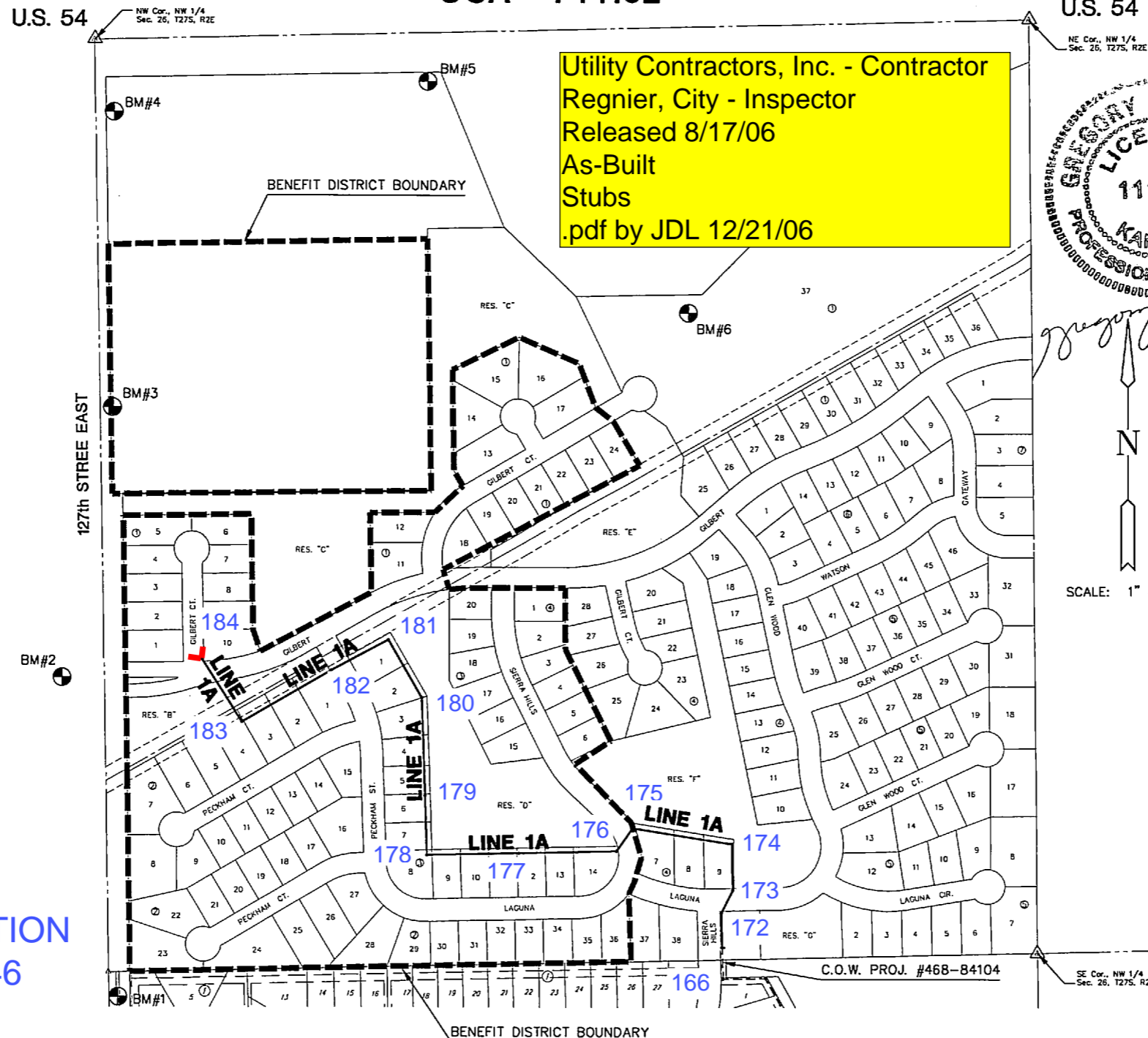
SBC (TELEPHONE)	800-870-8390
COX COMMUNICATIONS (CABLE)	252-0661
KANSAS GAS SERVICE (GAS)	832-3101
CITY OF WICHITA WATER & SEWER	262-6000
WESTAR (ELECTRIC)	383-8600
AQUILA (GAS)	800-303-0357

- THE CONTRACTOR SHALL BE RESPONSIBLE FOR PRESERVING PROPERTY IRONS. THE CONTRACTOR WILL BE REQUIRED TO RE-ESTABLISH ANY PROPERTY IRONS WHICH ARE DAMAGED OR DESTROYED BY HIS CONSTRUCTION OPERATIONS. SUCH IRONS SHALL BE RE-ESTABLISHED BY A LICENSED LAND SURVEYOR IN ACCORDANCE WITH STATE LAWS.
- EXISTING UTILITIES AND THEIR LOCATIONS, AS SHOWN ON THE PLANS REPRESENT THE BEST INFORMATION OBTAINABLE FOR DESIGN. LOCATION INFORMATION HAS BEEN OBTAINED FROM THE VARIOUS UTILITY COMPANIES AND IS EITHER FROM COMPANY RECORD DRAWINGS OR COMPANY PROVIDED FIELD LOCATIONS. THE PLAN LOCATIONS SHOWN ARE NOT GUARANTEED. ADDITIONAL EXISTING UTILITIES MAY ALSO BE ENCOUNTERED.
- RUBBLE FROM THE REMOVAL OF MISCELLANEOUS STRUCTURES AND EXCESS EXCAVATION WHICH IS TO BE WASTED SHALL BE DISPOSED OF ON SITES TO BE PROVIDED BY THE CONTRACTOR. THESE SITES SHALL BE APPROVED BY THE ENGINEER AS TO SUITABILITY, APPEARANCE AND SITE LOCATION. LOCATIONS THAT, IN THE OPINION OF THE ENGINEER, WILL LEAVE AN UNSIGHTLY APPEARANCE WILL NOT BE APPROVED. ALL DISPOSAL SITES MUST BE APPROVED BY THE KANSAS DEPARTMENT OF HEALTH AND ENVIRONMENT. MATERIAL EITHER STOCKPILED OR DISPOSED OF IN A FLOOD PLAIN WOULD REQUIRE A KANSAS STATE BOARD OF AGRICULTURE PERMIT. ANY MATERIAL DUMPED IN WATERS OF THE UNITED STATES OR WETLANDS IS SUBJECT TO U.S. CORPS OF ENGINEERS PERMITTING REGULATIONS. ANY MATERIAL BURIED OR STOCKPILED BEYOND APPROVED CONSTRUCTION LIMITS WOULD REQUIRE ADDITIONAL ARCHAEOLOGICAL INVESTIGATIONS UNLESS BURIED IN A PREVIOUSLY APPROVED BORROW LOCATION.
- COST OF EXCAVATION, HAULING, AND DUMPING OF EXCESS EXCAVATION SHALL BE SUBSIDIARY TO THE PROJECT.
- A PORTION OF EXCESS EXCAVATED MATERIAL SHALL BE MOUNDING AROUND MANHOLES WHICH EXTEND MORE THAN ONE (1) FOOT ABOVE THE EXISTING GROUND. SUCH MOUNDS SHALL BE CONSTRUCTED WITH A SIX (6) FOOT DIAMETER FLAT TOP WITH 4 TO 1 SIDE SLOPES DOWN TO THE ORIGINAL GROUND. THE ELEVATION OF THE FLAT TOP OF THE MOUND SHALL BE 0.4 FOOT BELOW THE TOP OF THE MANHOLE.
- ALL STUBS AND PLUGGED PIPES SHALL BE LOCATED WITH GREEN PLASTIC TAPE IN THE SAME MANNER AS RISERS.
- CONNECTING TO EXISTING MANHOLES:  
PRIOR TO LAYING SEWER LINES USING EXISTING STUBS IN EXISTING MANHOLES, THE CONTRACTOR SHALL EXPOSE AND VERIFY THE ELEVATION, GRADE AND ALIGNMENT OF EXISTING STUBS AND NOTIFY THE ENGINEER OF ANY DEVIATION FROM THE PLAN. WHERE CONNECTION TO AN EXISTING MANHOLE THAT DOES NOT HAVE AN EXISTING STUB OR THE STUB IS UNUSABLE DUE TO ELEVATION GRADE OR ALIGNMENT, THE CONTRACTOR SHALL BORE CUT INTO EXISTING MANHOLE WALL TO MAKE CONNECTION USING APPROVED WATER STOP GASKET, AND RESHAPE THE EXISTING MANHOLE INVERT TO PROVIDE SMOOTH FLOW. THE COST OF CONNECTING TO EXISTING MANHOLES IS INCIDENTAL TO THE PROJECT.
- TREES AND SHRUBS IN PUBLIC RIGHT-OF-WAY WHICH ARE IN DIRECT CONFLICT WITH PROPOSED NEW CONSTRUCTION SHALL BE REMOVED BY THE CONTRACTOR WITH THE ENGINEER'S APPROVAL. TREES AND SHRUBS WHICH ARE NOT IN DIRECT CONFLICT WITH PROPOSED NEW CONSTRUCTION SHALL BE SAVED AND PROTECTED FROM DAMAGE.
- ALL DISTURBED AREAS TO BE SEED WITH RYE GRASS AT A RATE OF 200 LBS. PER ACRE WITHIN 10 DAYS OF CONSTRUCTION. CONTRACTOR TO PREPARE GROUND PER CITY SPECIFICATIONS. COST IS SUBSIDIARY TO SITE PREPARATION AND RESTORATION.

MILE  
SECTION  
# 6346

## LATERAL 386, FOUR MILE CREEK PROJECT NO. 468-84102

CITY OF WICHITA, KANSAS  
JAMES L. ARMOUR, CITY ENGINEER  
OCA - 744162



LOCATION MAP



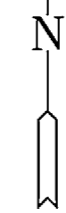
## INDEX TO DRAWINGS

SHEET NO.	DESCRIPTION
1	TITLE SHEET
2	DETAILS
3-5	LINE 1A
6-7	BMP DETAILS
8	BUBBLE MAP
9-10	PLAT

## BENCHMARKS

- BM #1 Railroad spike in South face of power pole, 25' +/- East and 70' +/- South of West Quarter Corner of Sec. 26, T 27 S, R 2 E. Elev. = 1337.50 (NGVD)
- BM #2 Chiseled square on top of curb at East end of median Island on Lincoln on West side of 127th Street East. Elev. = 1349.55 (NGVD)
- BM #3 Railroad spike in Southwest face of power 4th pole South of Kellogg on East Side of 127th Street East, 973' South and 24' East of Northwest Corner Sec. 26, T 27 S, R 2 E. Elev. = 1353.93 (NGVD)
- BM #4 Fence T-post at Northwest corner of property, 40' East of centerline 127th And 10' South of the South Kellogg right of way. Elev. = 1360.81 (NGVD)
- BM #5 fence T-post 10' South and 10' West of highway right of way corner, West side K-96 interchange and South side Kellogg, 969' East and 122' South of Northwest corner Sec. 26, T 27 S, R 2 E. Elev. = 1346.25 (NGVD)
- BM #6 Fence T-post 10' South and 10' West of Highway right of way corner, East Side of K-96 interchange and South side of Kellogg, 1696' East and 770' South of the Northwest corner Sec. 26, T 27 S, R 2 E. Elev. = 1342.08 (NGVD)
- BM #7 Fence T-post 4' South of South Kellogg right of way fence, 145' West-Southwest of the Northeast property corner, 135' West and 176' South of the North Quarter corner of Sec. 26, T 27 S, R 2 E. Elev. = 1326.40 (NGVD)

SCALE: 1" = 200'



SANITARY SEWER PLANS  
**COUNTRY HOLLOW**  
PHASE 1A

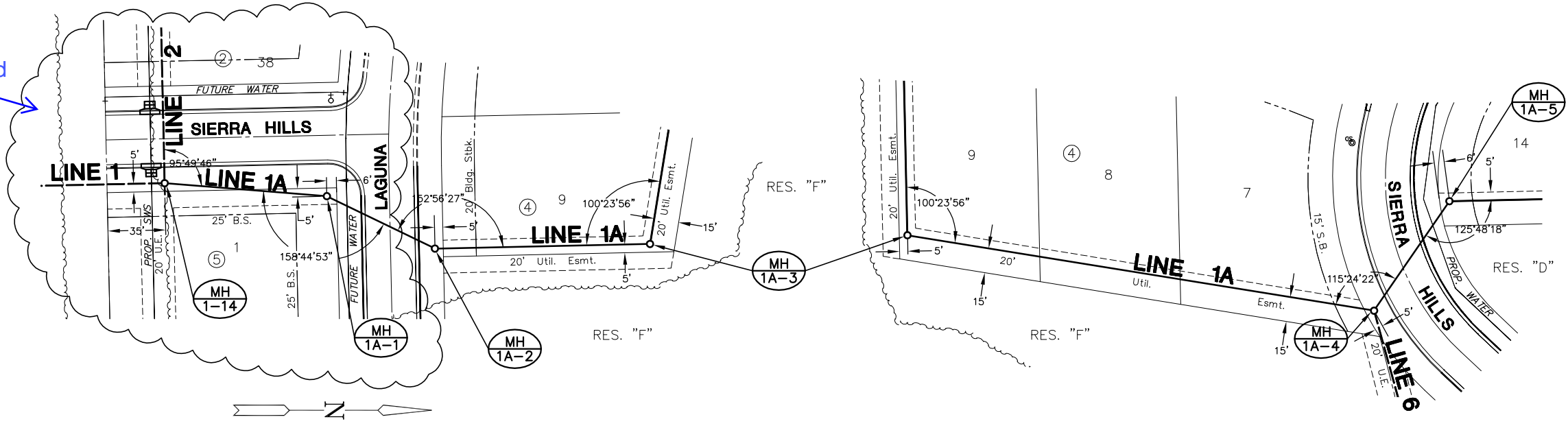
**LINE 1A**  
SHEET TITLE  
PROJECT NUMBER  
468-84104

DESIGN BY  
DFL  
DRAWN BY  
KKL/DMU  
CHECKED BY  
GJA

ISSUED  
JANUARY 2006  
REVISED

SHEET NO.  
3 of 10

Changed

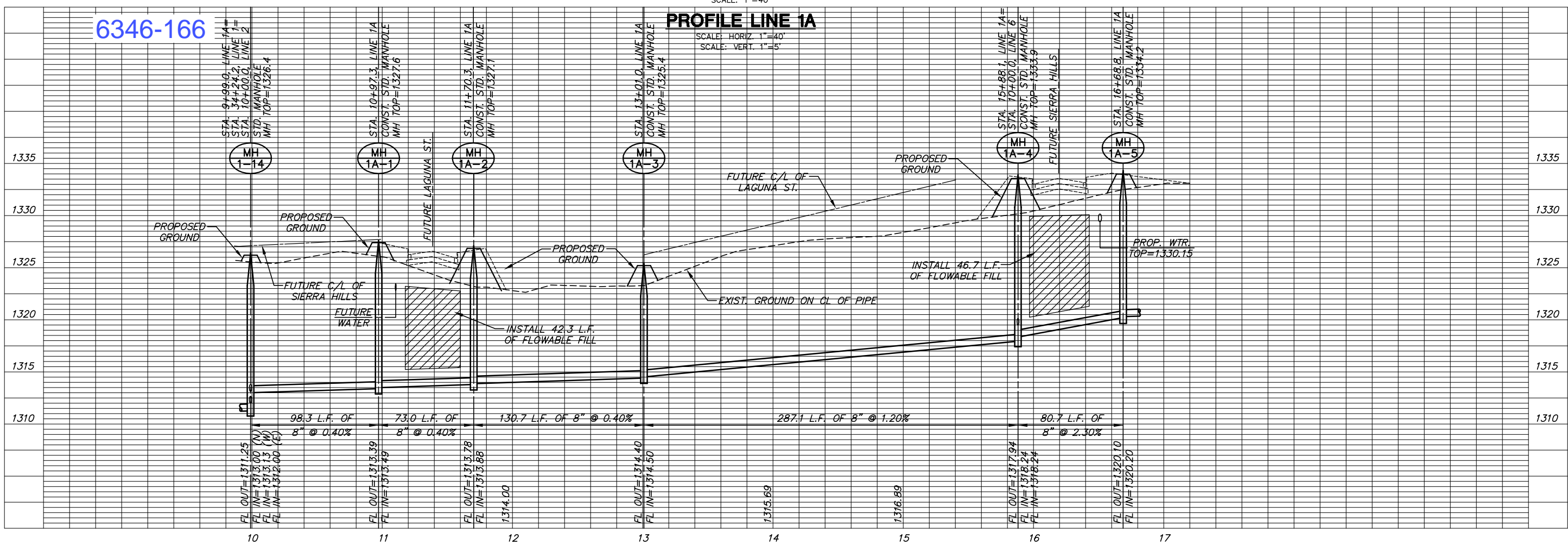
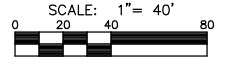


NOTES:  
SEE PHASE 1 SANITARY SEWER PLANS  
(PROJECT #468-84104) FOR DESIGN  
INFORMATION ON LINES 1-6 THAT ARE  
REFERENCED IN THIS SET OF PLANS.

(cloud) = REVISED 03/08/06

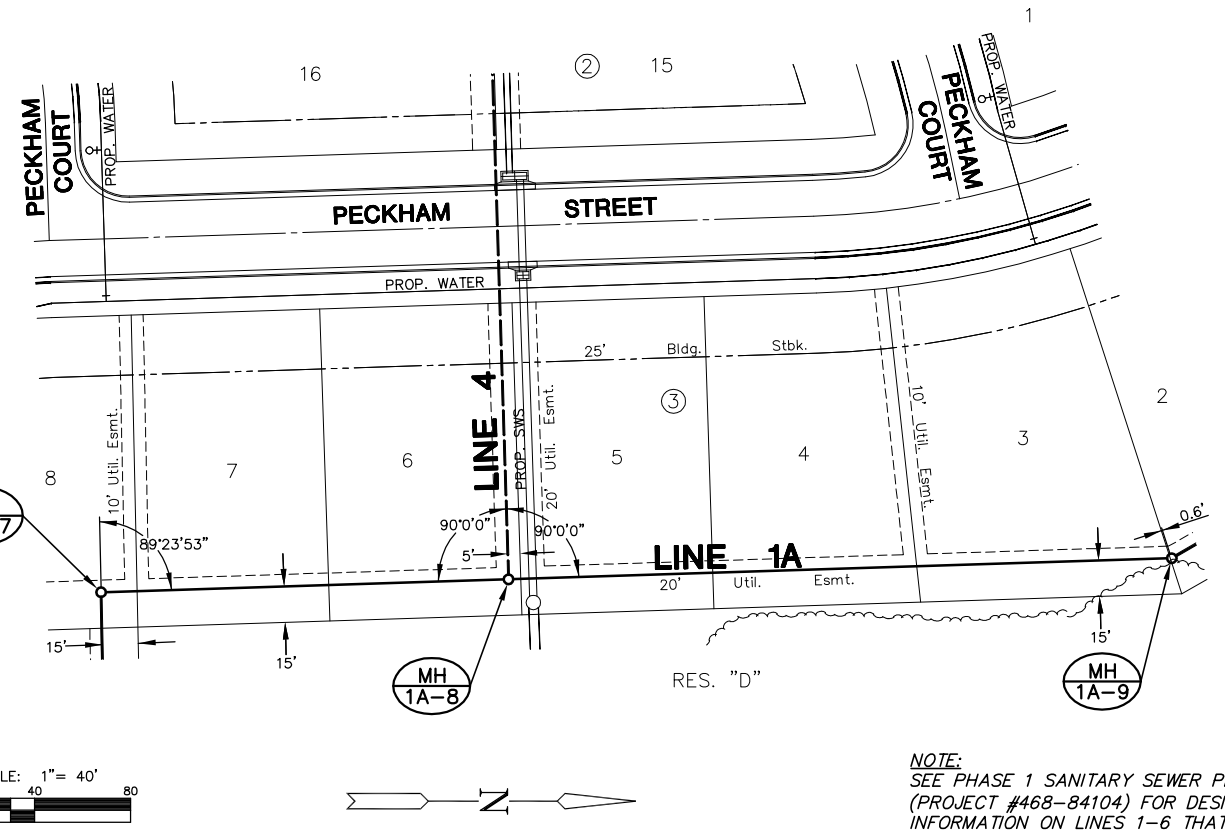
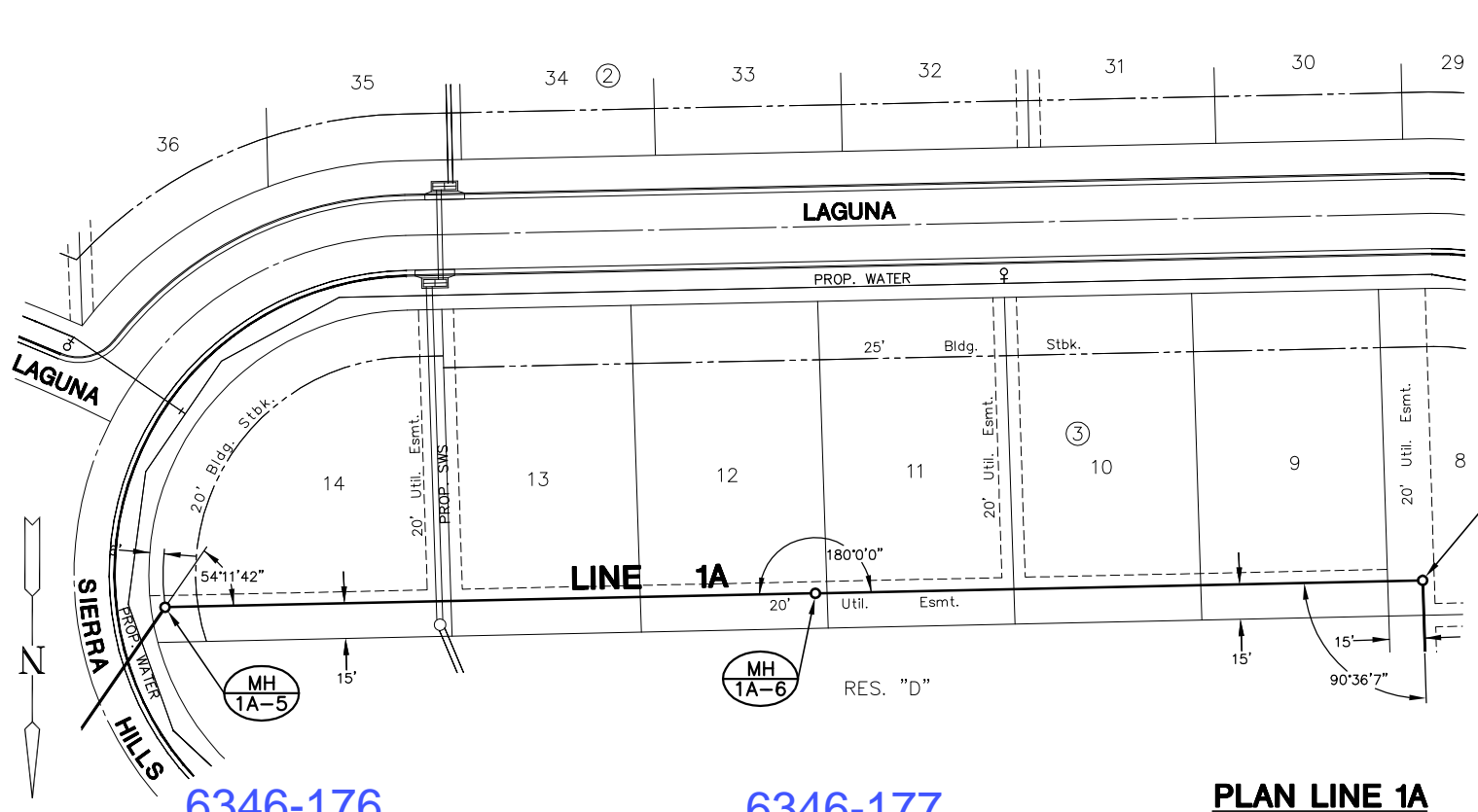
6346-172 6346-173 6346-174 6346-175 6346-176

**PLAN LINE 1A**  
SCALE: 1"=40'

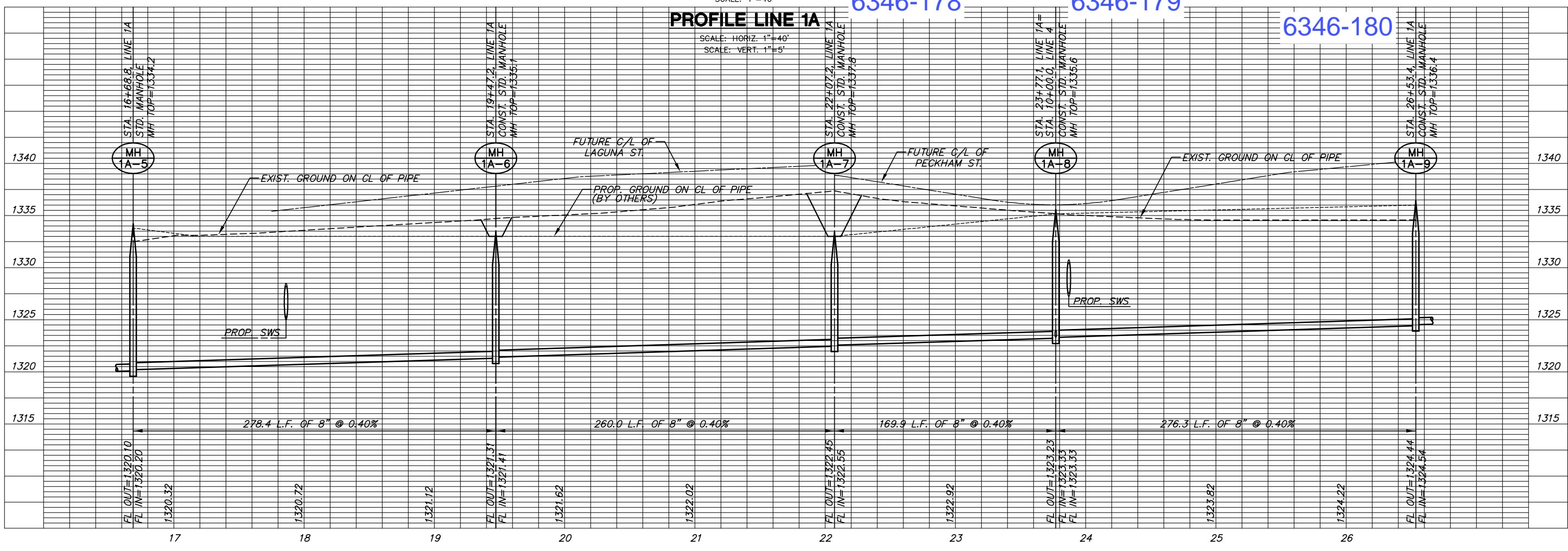


**PROFILE LINE 1A**  
SCALE: HORIZ. 1"=40'  
SCALE: VERT. 1"=5'

**SANITARY SEWER PLANS**  
**COUNTRY HOLLOW**  
**PHASE 1A**



NOTE:  
SEE PHASE 1 SANITARY SEWER PLANS  
(PROJECT #468-84104) FOR DESIGN  
INFORMATION ON LINES 1-6 THAT ARE  
REFERENCED IN THIS SET OF PLANS.



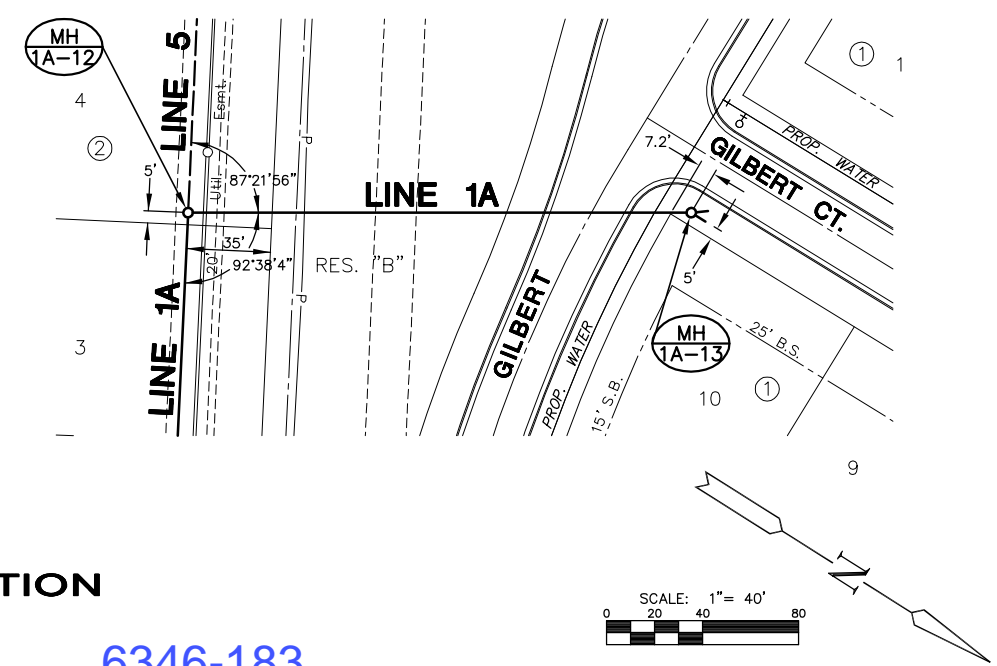
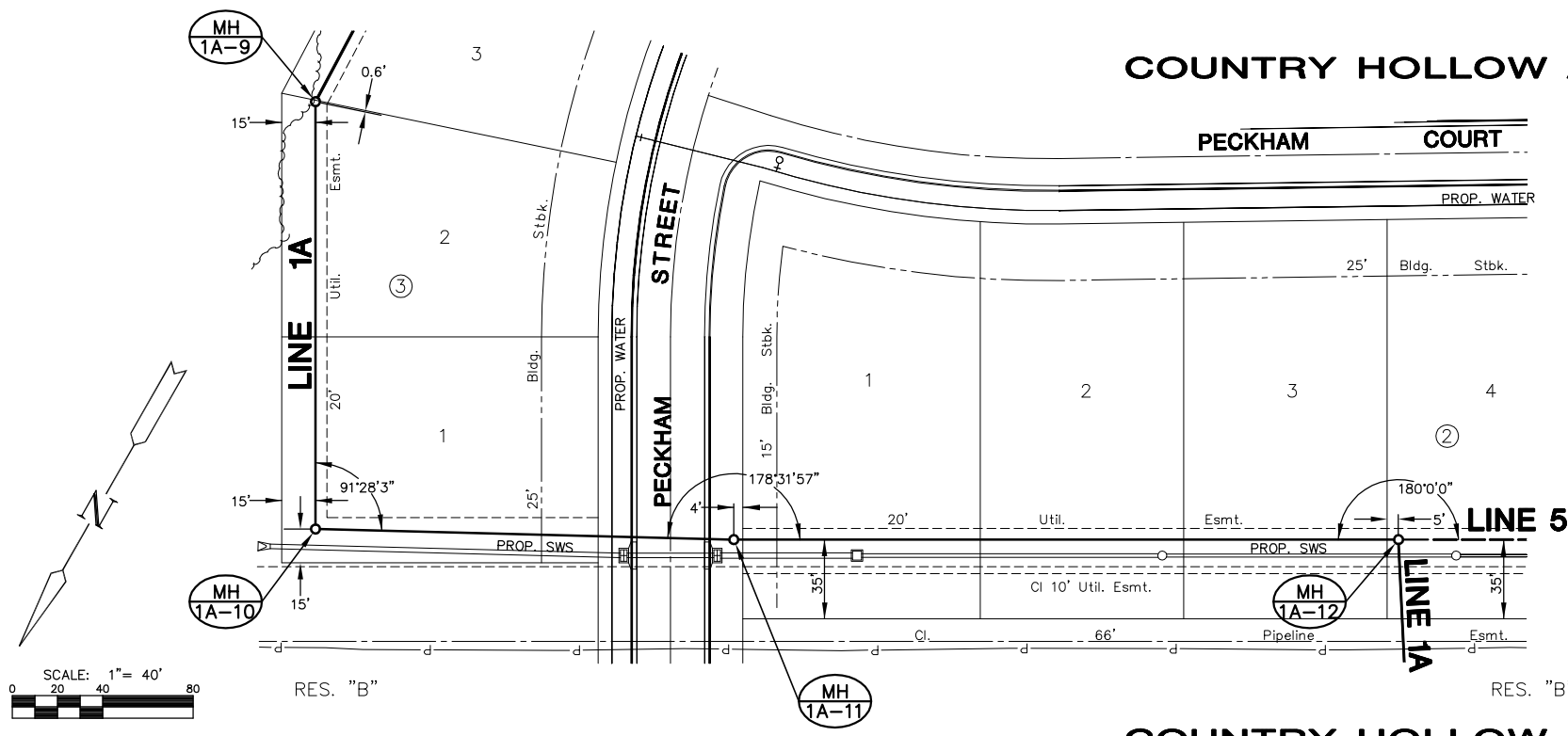
**LINE 1A**  
SHEET TITLE  
PROJECT NUMBER  
**468-84104**

DESIGN BY  
**DFL**  
DRAWN BY  
**KKL/DMU**  
CHECKED BY  
**GJA**

ISSUED  
**JANUARY 2006**  
REVISED

SHEET NO.  
**4 of 10**

**COUNTRY HOLLOW ADDITION**



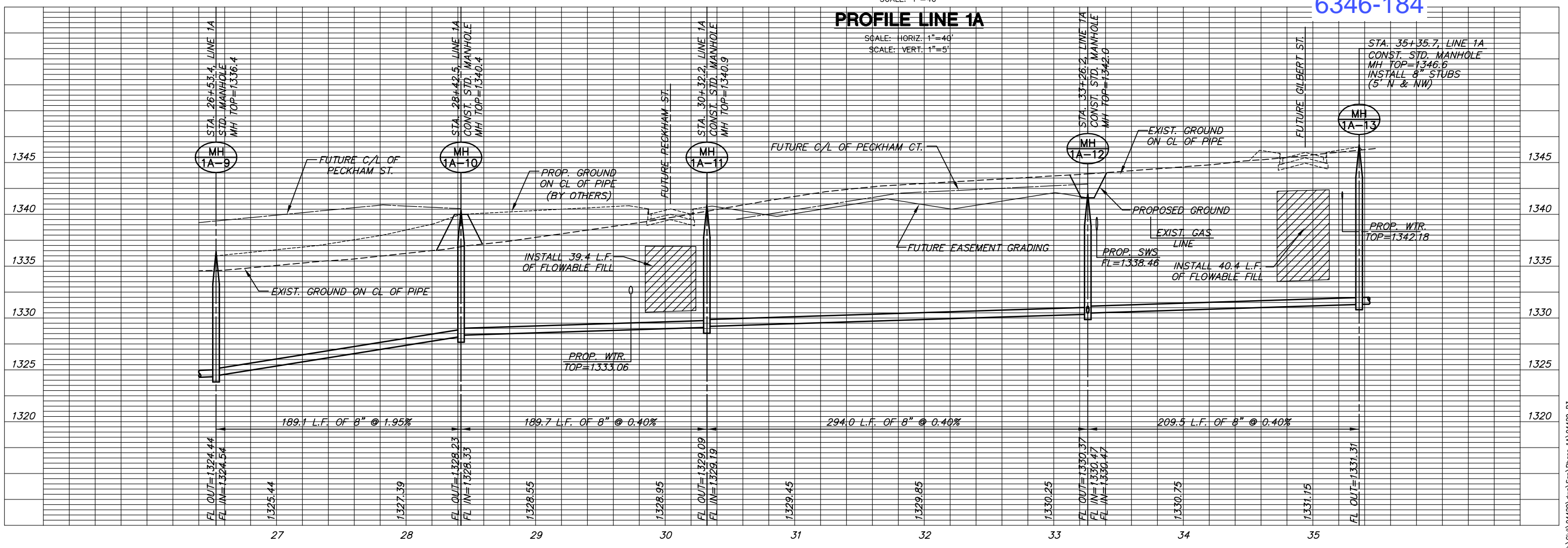
**COUNTRY HOLLOW ADDITION**

**PLAN LINE 1A**  
SCALE: 1"=40'

**NOTE:**  
SEE PHASE 1 SANITARY SEWER PLANS  
(PROJECT #468-84104) FOR DESIGN  
INFORMATION ON LINES 1-6 THAT ARE  
REFERENCED IN THIS SET OF PLANS.

6346-180      6346-181      6346-182      6346-183      6346-184

**PROFILE LINE 1A**  
SCALE: HORIZ. 1"=40'  
SCALE: VERT. 1"=5'





NW Cor., NW 1/4, Sec. 26  
T27S, R2E, 6TH P.M.  
Set 5/8" Rebar w/ MKEC CLS 39 id cap  
Fnd. 3/8" bar 0.86' W. of corner

KELLOGG ST/US 54  
N88°43'30"E 2649.14'(M)

NE Cor., NW 1/4, Sec. 26  
T27S, R2E, 6TH P.M.  
Fnd. 3/8" Rebar w/o id cap  
in thimble

K-DOT R/W CONDEMNATION CASE NO. A-54089

K-DOT R/W  
CONDEMNATION CASE  
NO. 91-C-879  
Dated: May 20th, 1991

MINIMUM PAD ELEVATIONS (LOWEST OPENINGS)			
LOTS	BLOCK	ELEVATION	
		(CITY DATUM)	(NGVD)
6	1	156.6	1344.0
7	1	156.6	1344.0
8	1	156.6	1344.0
9	1	156.6	1344.0
10	1	156.6	1344.0
11	1	156.6	1344.0
12	1	156.6	1344.0
13	1	151.6	1339.0
14	1	151.6	1339.0
15	1	151.6	1339.0
16	1	151.6	1339.0
17	1	151.6	1339.0
18	1	148.4	1335.8
19	1	148.4	1335.8
20	1	148.4	1335.8
21	1	148.4	1335.8
22	1	148.4	1335.8
23	1	148.4	1335.8
24	1	148.4	1335.8
25	1	148.4	1335.8
37	1	151.6	1339.0

**BENCH MARKS**

- BM #3 Railroad spike in Southwest face of power 4th pole South of Kellogg on East Side of 127th Street East, 973' South and 24' East of Northwest Corner Sec. 26, T 27 S, R 2 E. Elev. = 1353.93 (NGVD)
- BM #4 Fence T-post at Northwest corner of property, 40' East of centerline 127th and 10' South of the South Kellogg right of way. Elev. = 1360.81 (NGVD)
- BM #5 Fence T-post 10' South and 10' West of highway right of way corner, West side K-96 interchange and South side Kellogg, 969' East and 122' South of Northwest corner Sec. 26, T 27 S, R 2 E. Elev. = 1346.25 (NGVD)
- BM #6 Fence T-post 10' South and 10' West of highway right of way corner, East Side of K-96 interchange and South side of Kellogg, 1696' East and 770' South of the Northwest corner Sec. 26, T 27 S, R 2 E. Elev. = 1342.08 (NGVD)
- BM #7 Fence T-post 4' South of South Kellogg right of way fence, 145' West-Southwest of the Northeast property corner, 135' West and 176' South of the North Quarter corner of Sec. 26, T 27 S, R 2 E. Elev. = 1326.40 (NGVD)

**LEGEND**

- △ = Section Corner Monument Found
- = Found Survey Monument (see annotated caption for type)
- = Set 5/8" Rebar W/ MKEC CLS 39 id. Cap
- (D) = Described
- (P) = Platted
- (M) = Measured
- (CM) = Calculated from measured
- U.E. & D.E. = Utility Easement and Drainage Easement
- = 25' Building Setback (unless otherwise annotated)
- = 20' Utility Easement (unless otherwise annotated)
- = 20' Street Dedication

**FINAL PLAT**  
**COUNTRY HOLLOW ADDITION**  
AN ADDITION TO WICHITA, SEDGWICK COUNTY, KANSAS

DOCUMENT NO.



411 N. WEBB ROAD  
WICHITA, KS. 67208  
316.684.9800  
WWW.MKEC.COM

J:\Civil\04429.dwg San Phase 1A 04429