

SANITARY SEWER PLANS

COUNTRY HOLLOW ADDITION

LATERAL 388, FOUR MILE CREEK

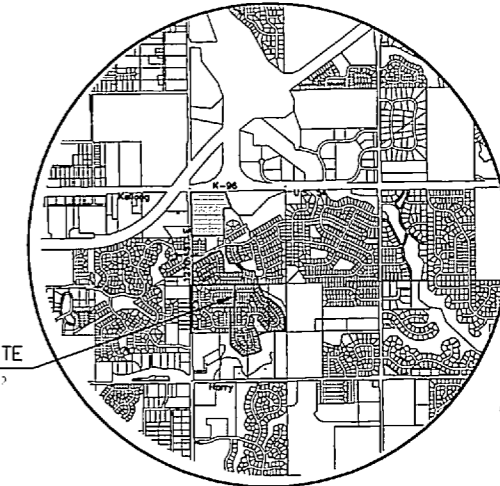
PROJECT NO. 468-84104

CITY OF WICHITA, KANSAS
JAMES L. ARMOUR, CITY ENGINEER

OCA - 744163

Note: Tied with project 468-84102 - Lat. 386, FMC

PROJECT SITE



LOCATION MAP

INDEX TO DRAWINGS

SHEET NO.	DESCRIPTION
1	TITLE SHEET
2-3	DETAILS
4-7	LINE 1
8	LINE 2
9	LINE 2 & 3
10	LINE 4
11	LINE 5
12	LINE 6
13	LINE 7
14-15	BMP DETAILS
16-17	BUBBLE MAPS
18-19	PLAT

BENCHMARKS

BM #1	Railroad spike in South face of power pole, 25' +/- East and 70' +/- South of West Quarter Corner of Sec. 26, T 27 S, R 2 E Elev. = 1337.50 (NGVD)
BM #2	Chiseled square on top of curb at East end of median island on Lincoln on West side of 127th Street East. Elev. = 1349.55 (NGVD)
BM #3	Railroad spike in Southwest face of power 4th pole South of Kellogg on East Side of 127th Street East, 97'3" South and 24' East of Northwest Corner Sec. 26, T 27 S, R 2 E Elev. = 1353.93 (NGVD)
BM #4	Fence T-post at Northwest corner of property, 40' East of centerline 127th And 10' South of the South Kellogg right of way. Elev. = 1360.81 (NGVD)
BM #5	Fence T-post 10' South and 10' West of Highway right of way corner, West side K-96 Interchange and South side Kellogg, 969' East and 122' South of Northwest corner Sec. 26, T 27 S, R 2 E. Elev. = 1346.25 (NGVD)
BM #6	Fence T-post 10' South and 10' West of Highway right of way corner, East Side of K-96 Interchange and South side of Kellogg, 1494' East and 770' South of the Northwest corner Sec. 26, T 27 S, R 2 E. Elev. = 1342.08 (NGVD)
BM #7	Fence T-post 4' South of South Kellogg right of way fence, 145' West-Southwest of the Northeast property corner, 135' West and 176' South of the North Quarter corner of Sec. 26, T 27 S, R 2 E. Elev. = 1326.40 (NGVD)
BM #8	Railroad spike in south face of power pole, 79' south southeast of the west quarter corner of Section 26, T26S, R2E. Elev. = 1337.46 (NGVD)

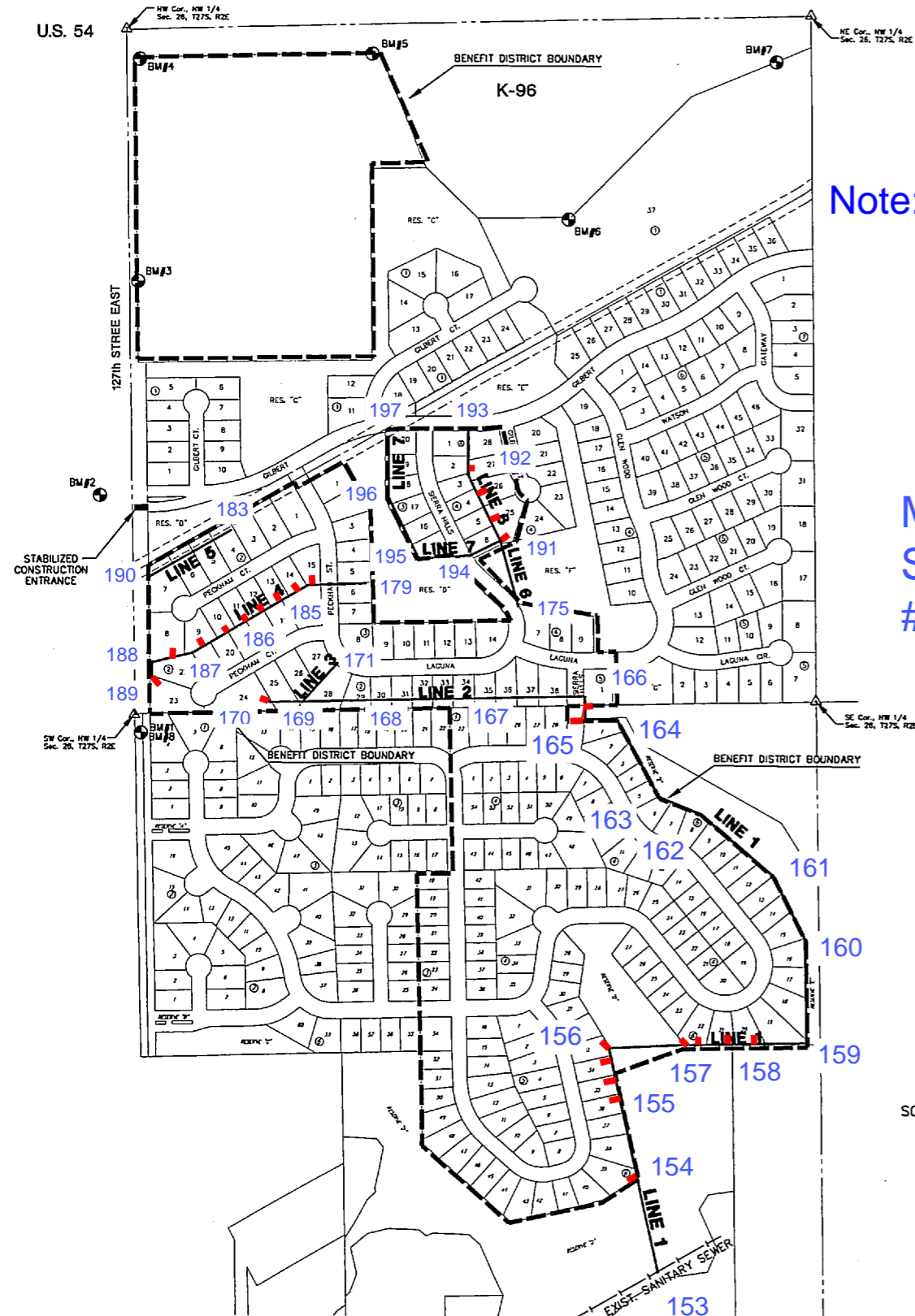
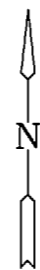
GENERAL NOTES

- UNLESS SHOWN OR STATED OTHERWISE ON THESE DRAWINGS, MATERIALS AND CONSTRUCTION SHALL BE IN ACCORDANCE WITH CITY OF WICHITA STANDARD SPECIFICATIONS.
- CONTRACTOR WILL BE REQUIRED TO PROVIDE A MINIMUM ADVANCE NOTICE OF SEVENTY-TWO (72) HOURS TO UTILITY COMPANIES PRIOR TO STARTING ANY EXCAVATION AS FOLLOWS:
KANSAS ONE-CALL 1-800-344-7233
or 687-2470 (LOCAL WICHITA)
THE CONTRACTOR MUST NOTIFY THE FOLLOWING IN CASE OF AN EMERGENCY:
SBC (TELEPHONE) 800-870-8390
COX COMMUNICATIONS (CABLE) 262-0661
KANSAS GAS SERVICE (GAS) 832-3101
CITY OF WICHITA WATER & SEWER 262-6000
WESTAR (ELECTRIC) 383-8600
AGUILA (GAS) 800-303-0357
- THE CONTRACTOR SHALL BE RESPONSIBLE FOR PRESERVING PROPERTY IRONS. THE CONTRACTOR WILL BE REQUIRED TO RE-ESTABLISH ANY PROPERTY IRONS WHICH ARE DAMAGED OR DESTROYED BY HIS CONSTRUCTION OPERATIONS. SUCH IRONS SHALL BE RE-ESTABLISHED BY A LICENSED LAND SURVEYOR IN ACCORDANCE WITH STATE LAWS.
- EXISTING UTILITIES AND THEIR LOCATIONS, AS SHOWN ON THE PLANS REPRESENT THE BEST INFORMATION OBTAINABLE FOR DESIGN. LOCATION INFORMATION HAS BEEN OBTAINED FROM THE VARIOUS UTILITY COMPANIES AND IS EITHER FROM COMPANY RECORD DRAWINGS OR COMPANY PROVIDED FIELD LOCATIONS. THE PLAN LOCATIONS SHOWN ARE NOT GUARANTEED. ADDITIONAL EXISTING UTILITIES MAY ALSO BE ENCOUNTERED.
- RUBBLE FROM THE REMOVAL OF MISCELLANEOUS STRUCTURES AND EXCESS EXCAVATION WHICH IS TO BE WASTED SHALL BE DISPOSED OF ON SITES TO BE PROVIDED BY THE CONTRACTOR. THESE SITES SHALL BE APPROVED BY THE ENGINEER AS TO SUITABILITY, APPEARANCE AND SITE LOCATION. LOCATIONS THAT, IN THE OPINION OF THE ENGINEER, WILL LEAVE AN UNSIGHTLY APPEARANCE WILL NOT BE APPROVED. ALL DISPOSAL SITES MUST BE APPROVED BY THE KANSAS DEPARTMENT OF HEALTH AND ENVIRONMENT. MATERIAL EITHER STOCKPILED OR DISPOSED OF IN A FLOOD PLAIN WOULD REQUIRE A KANSAS STATE BOARD OF AGRICULTURE PERMIT. ANY MATERIAL DUMPED IN WATERS OF THE UNITED STATES OR WETLANDS IS SUBJECT TO U.S. CORPS OF ENGINEERS PERMITTING REGULATIONS. ANY MATERIAL BURIED OR STOCKPILED BEYOND APPROVED CONSTRUCTION LIMITS WOULD REQUIRE ADDITIONAL ARCHAEOLOGICAL INVESTIGATIONS UNLESS BURIED IN A PREVIOUSLY APPROVED BORROW LOCATION.
- COST OF EXCAVATION, HAULING, AND DUMPING OF EXCESS EXCAVATION SHALL BE SUBSIDIARY TO THE PROJECT.
- A PORTION OF EXCESS EXCAVATED MATERIAL SHALL BE MOUNDING AROUND MANHOLES WHICH EXTEND MORE THAN ONE (1) FOOT ABOVE THE EXISTING GROUND. SUCH MOUNDS SHALL BE CONSTRUCTED WITH A SIX (6) FOOT DIAMETER FLAT TOP WITH 4 TO 1 SIDE SLOPES DOWN TO THE ORIGINAL GROUND. THE ELEVATION OF THE FLAT TOP OF THE MOUND SHALL BE 0.4 FOOT BELOW THE TOP OF THE MANHOLE.
- ALL STUBS AND PLUGGED PIPES SHALL BE LOCATED WITH GREEN PLASTIC TAPE IN THE SAME MANNER AS RISERS.
- CONNECTING TO EXISTING MANHOLES:
PRIOR TO LAYING SEWER LINES USING EXISTING STUBS IN EXISTING MANHOLES, THE CONTRACTOR SHALL EXPOSE AND VERIFY THE ELEVATION, GRADE AND ALIGNMENT OF EXISTING STUBS AND NOTIFY THE ENGINEER OF ANY DEVIATION FROM THE PLAN. WHERE CONNECTION TO AN EXISTING MANHOLE THAT DOES NOT HAVE AN EXISTING STUB OR THE STUB IS UNUSABLE DUE TO ELEVATION GRADE OR ALIGNMENT, THE CONTRACTOR SHALL BORE CUT INTO EXISTING MANHOLE WALL TO MAKE CONNECTION USING APPROVED WATER STOP GASKET, AND RESHAPE THE EXISTING MANHOLE INVERT TO PROVIDE SMOOTH FLOW. THE COST OF CONNECTING TO EXISTING MANHOLES IS INCIDENTAL TO THE PROJECT.
- TREES AND SHRUBS IN PUBLIC RIGHT-OF-WAY WHICH ARE IN DIRECT CONFLICT WITH PROPOSED NEW CONSTRUCTION SHALL BE REMOVED BY THE CONTRACTOR WITH THE ENGINEER'S APPROVAL. TREES AND SHRUBS WHICH ARE NOT IN DIRECT CONFLICT WITH PROPOSED NEW CONSTRUCTION SHALL BE SAVED AND PROTECTED FROM DAMAGE.
- ALL DISTURBED AREAS TO BE SEEDED WITH RYE GRASS AT A RATE OF 200 LBS. PER ACRE WITHIN 10 DAYS OF CONSTRUCTION. CONTRACTOR TO PREPARE GROUND PER CITY SPECIFICATIONS. COST IS SUBSIDIARY TO SITE PREPARATION AND RESTORATION.

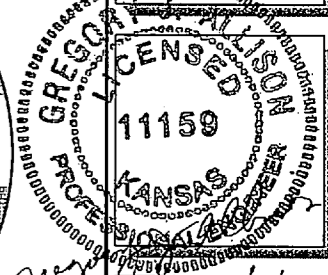
Utility Contractors, Inc. - Contractor
Regnier, City - Inspector
Released 8/17/06
As-Built
Risers & Stubs
.pdf by JDL 12/21/06

MILE SECTION # 6346

SCALE: 1"=300'



MKEC
ENGINEERING
CONSULTANTS, INC.
411 N. WEBB ROAD
WICHITA, K.S. 67206
9600



SANITARY SEWER PLANS
COUNTRY HOLLOW
PHASE 1

TITLE SHEET
SHEET TITLE
468-84104
PROJECT NUMBER

DESIGN BY: DFL
DRAWN BY: KKL/DMU
CHECKED BY: GJA

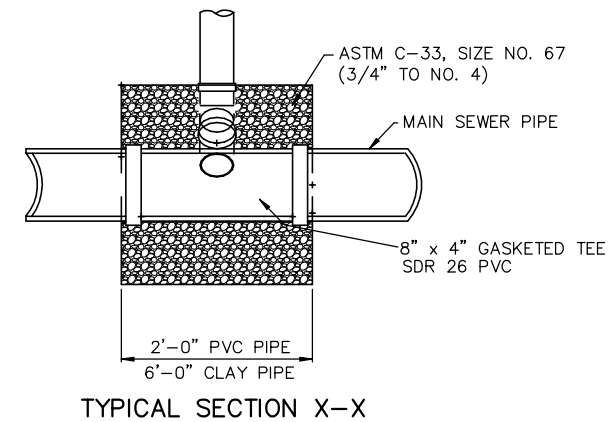
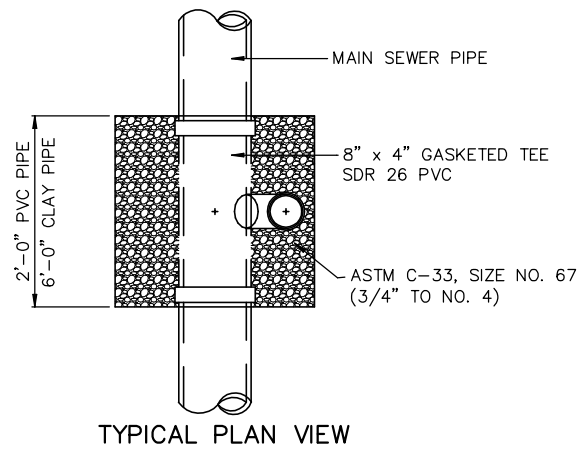
ISSUED: JANUARY 2006
REVISED:

SHEET NO.
1 of 19

VERTICAL RISER DETAILS ADOPTED AS STANDARD DESIGN BY CITY OF WICHITA, KANSAS FEBRUARY 2005

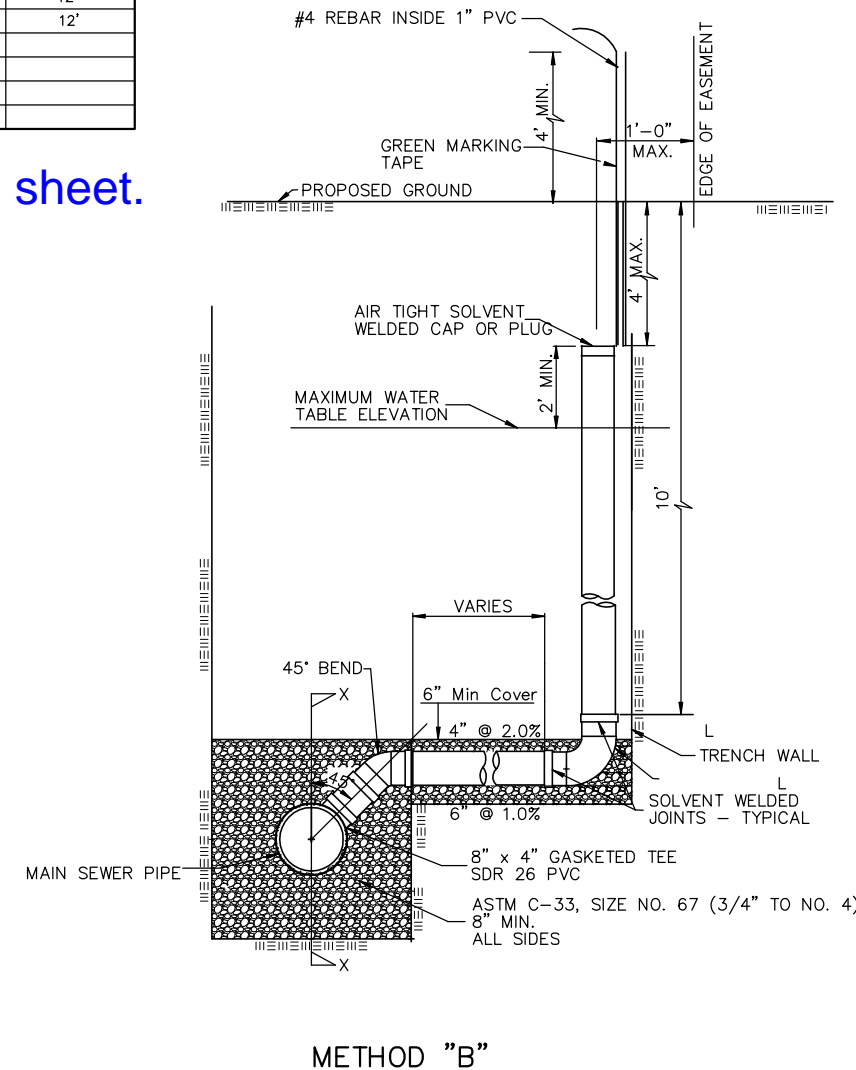
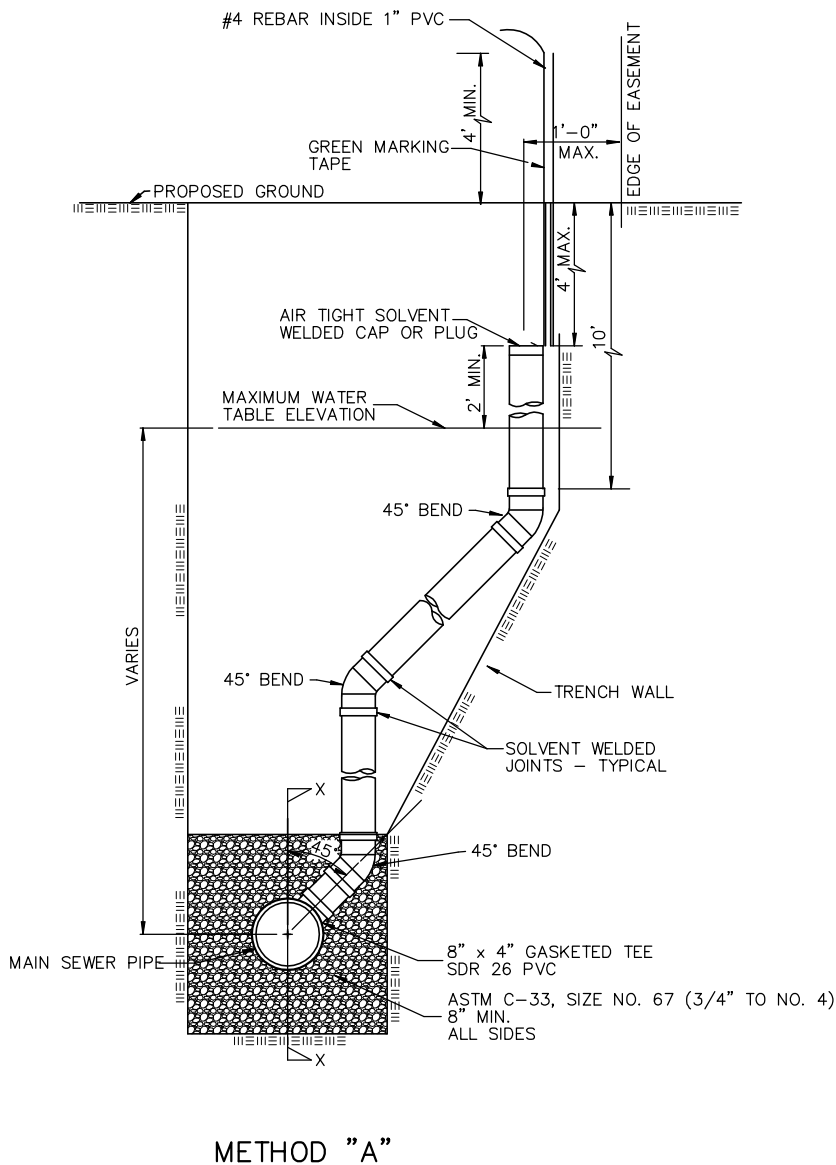
GENERAL NOTES

1. **RISERS.** Risers shall be installed to serve all lots or tracts where the sanitary sewer main is below the water table. Risers shall also be installed to serve all lots and tracts where the sanitary sewer main depth is greater than 12 feet below the proposed ground elevation. Installation of risers because of field conditions shall be as approved by the Construction Engineer. The location of the risers to serve developed property shall be approved by the property owner and the Construction Engineer.
2. **PIPE STUBS.** Pipe stubs shall be installed in manholes where locations of manholes will provide satisfactory service connection as determined by the Construction Engineer. The vertical distance between the flowline of the manhole pipe stub and the flowline of the sanitary sewer main out of the manhole shall not exceed 2 feet. Risers shall be utilized at manhole pipe stubs as indicated in Note 1. Manhole pipe stubs shall be set such that the top of the stub is not lower than the top of the sanitary sewer main.
3. **SIZING.** Pipe stubs and risers shall be sized according to the plans and riser table where risers are indicated by the plans. Where risers or pipe stubs are required because of field conditions, the risers and stubs shall be six-inch diameter for commercial or industrial properties and 4" or 6" diameter for residential properties, based on lot size and sanitary sewer main depth. Sizing of risers and stubs shall be approved by the Construction Engineer prior to installation.
4. **RISER OR STUB MATERIAL.** Risers and stubs shall be constructed of Schedule 40 PVC Pipe, meeting the requirements of the latest revision of A.S.T.M. . All pipe joints shall be solvent welded. 8" x 4" full body tee shall be SDR 26 PVC pipe.
5. **ROCK ENCASUREMENT.** Riser connections to clay pipe sanitary sewers shall be rock encased both ways from the riser centerline. The rock encasement shall extend three feet from the riser centerline or stop at the first sanitary sewer pipe joint within three feet of the riser centerline. Riser connections to PVC Sanitary Sewer mains shall be rock encased one foot each way from the riser centerline. Crushed rock shall conform to ASTM. C-33, Gradation No. 67, and shall meet all requirements for Portland Cement Concrete Pavement Coarse Aggregate, Section 406.2, City of Wichita Standard Specifications.
6. **BEDDING.** Beyond the limits of the rock encasement, bedding around the sanitary sewer riser shall be compacted Pipe Bedding Type 1 or 2. The bedding shall be placed and compacted from the depth of the sanitary sewer main to the top of the sanitary sewer riser pipe. Compacted Pipe Bedding Type 1 or 2 shall be required for all risers whether constructed in vertical wall or sloped wall trenches. Bedding material and construction practices shall be approved by the Construction Engineer prior to installation.
7. **SUPPORT OF RISERS.** Sanitary sewer riser pipe shall be supported during trench backfill. The riser pipe shall be held in a vertical position at all times until trench backfill and compaction has been completed. Contractor's methods for supporting and backfilling the riser pipe shall be approved by the Construction Engineer.
8. **PLUGGING.** The ends of the riser pipes and manhole stubs shall be plugged using an airtight solvent welded cap or plug. Cap or plug fittings shall be approved by the Construction Engineer prior to installation. Caps or plugs which do not provide an airtight seal will not be accepted.
9. **TOP OF THE RISER PIPE.** The top elevation of the sanitary sewer riser pipe shall be built per plan elevations, unless otherwise directed by the Construction Engineer. Where riser elevations are not shown on the plans, the top of the risers shall be set at an elevation four feet below the proposed ground surface. If ground water is encountered, the top of the riser pipe shall be set at an elevation two feet (min.) above the maximum water table elevation, regardless of the riser elevation shown on the plans.
10. **MARKING.** Locations of the ends of the sanitary sewer riser pipe shall be marked by installing 1" PVC from the top of the riser to a minimum of 4' above the top of finished grade. No. 4 rebar shall be placed within the 1" PVC pipe such that the top of the bar is flush with the finished grade. The 1" PVC pipe shall be wrapped with green colored plastic tape, for the full length above ground surface. The green tape shall be 4 mil Polyethylene film with a minimum width of three inches, specifically manufactured for the purpose of identification of underground sewers.
11. **LOCATION MEASURES.** The project inspector shall record and document the location of all risers constructed as measured from the nearest manhole, indicating the direction from the manhole, the direction and distance from the main, riser size, and elevation of the top of the riser.
12. **RISER LOCATION.** The riser shall be located per plan if shown. If not shown on the plan, the riser shall be located at the center of the lot within one foot of the property side of the easement for the lot being served. All riser locations shall be approved by the Construction Engineer prior to installation.
13. **PAYMENT.** "Sanitary sewer risers" shall be paid for at the contract unit price per each, which price shall be full compensation for all pipe, fittings, marking tape, length of 1" PVC, rock encasement, support during backfill, backfill, labor, site restoration, and any other items necessary to complete the work. "Manhole stubs" shall be paid for at the contract unit price per each, which shall be full compensation for all labor, material, and incidentals necessary to complete the work including all pipe, fittings, rock encasement, and all other items as required and listed for "Sanitary Sewer Risers".



SEWER SERVICE TABLE							
NO.	TYPE	LOCATION				FOR INFORMATION ONLY	
		LOT NO.	BLOCK NO.	LINE NO.	STATION/DIRECTION	APPROXIMATE LENGTH 4" PIPE	
						VERTICAL	HORIZONTAL
7	TEE SERVICE CONNECTION	15	2	4	12+15/RT.	9'	12'
8	TEE SERVICE CONNECTION	14	2	4	12+74/RT.	9'	12'
9	TEE SERVICE CONNECTION	13	2	4	13+54/RT.	8'	12'
10	TEE SERVICE CONNECTION	12	2	4	14+34/RT.	8'	12'
11	TEE SERVICE CONNECTION	11	2	4	15+11/RT.	8'	12'
12	TEE SERVICE CONNECTION	10	2	4	15+94/RT.	8'	12'
13	TEE SERVICE CONNECTION	9	2	4	16+84/RT.	8'	12'
14	TEE SERVICE CONNECTION	8	2	4	18+27/RT.	7'	12'
15	TEE SERVICE CONNECTION	25	4	6	13+35/RT.	7'	12'
16	TEE SERVICE CONNECTION	26	4	6	14+70/RT.	9'	12'
17	TEE SERVICE CONNECTION	27	4	6	15+77/RT.	8'	12'

Note: Risers # 1-6 on each plan sheet.



NOTE: RISER PIPE REQUIREMENTS AT MANHOLE STUBS SHALL BE SIMILAR TO THOSE SHOWN ABOVE.

REV. 2/2/05, MCG

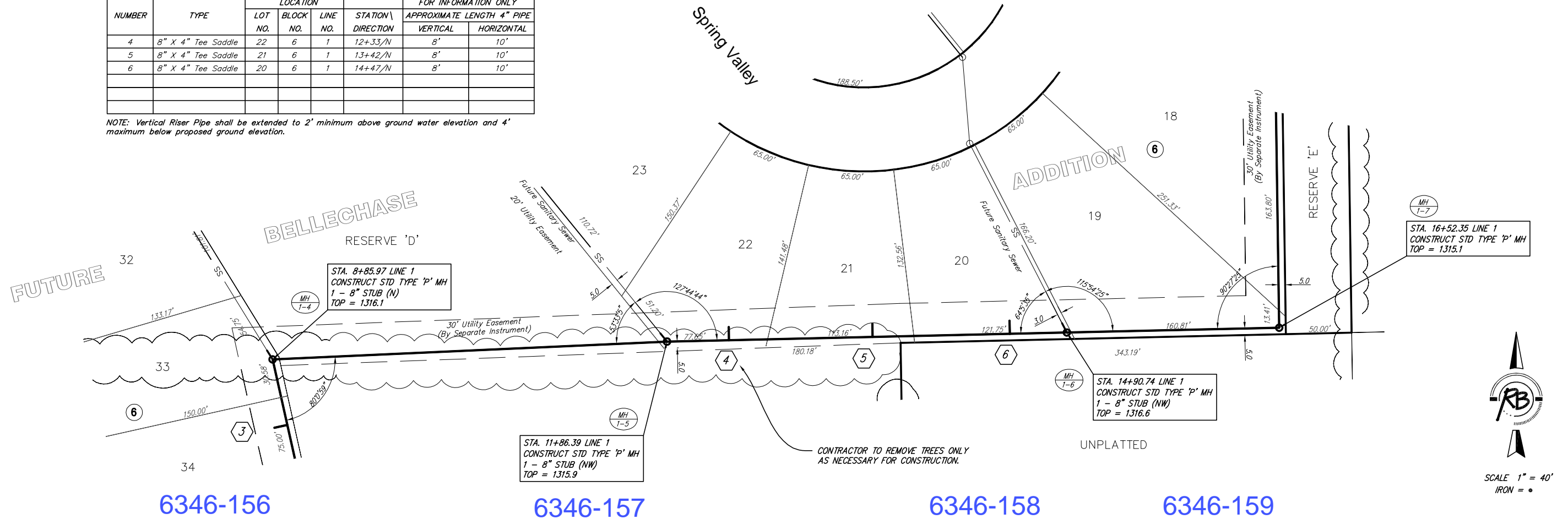


VERTICAL RISER DETAIL		
CITY ENGINEER		
JAMES L. ARMOUR, P.E., L.S.		
PROJECT NUMBER	OCA NUMBER	DATE
468-84104	744163	01/06
CITY ENGINEER'S OFFICE		DESIGN
CITY HALL - SEVENTH FLOOR		DRAWN
455 NORTH MAIN STREET		ABC
WICHITA, KANSAS 67202-1620		DEF
(316) 268-4501		SHEET
(316) 268-4114 FAX		3 of 19

SEWER SERVICE TABLE

NUMBER	TYPE	LOCATION			STATION \ DIRECTION	FOR INFORMATION ONLY	
		LOT NO.	BLOCK NO.	LINE NO.		APPROXIMATE LENGTH 4" PIPE	VERTICAL
4	8" X 4" Tee Saddle	22	6	1	12+33/N	8'	10'
5	8" X 4" Tee Saddle	21	6	1	13+42/N	8'	10'
6	8" X 4" Tee Saddle	20	6	1	14+47/N	8'	10'

NOTE: Vertical Riser Pipe shall be extended to 2' minimum above ground water elevation and 4' maximum below proposed ground elevation.

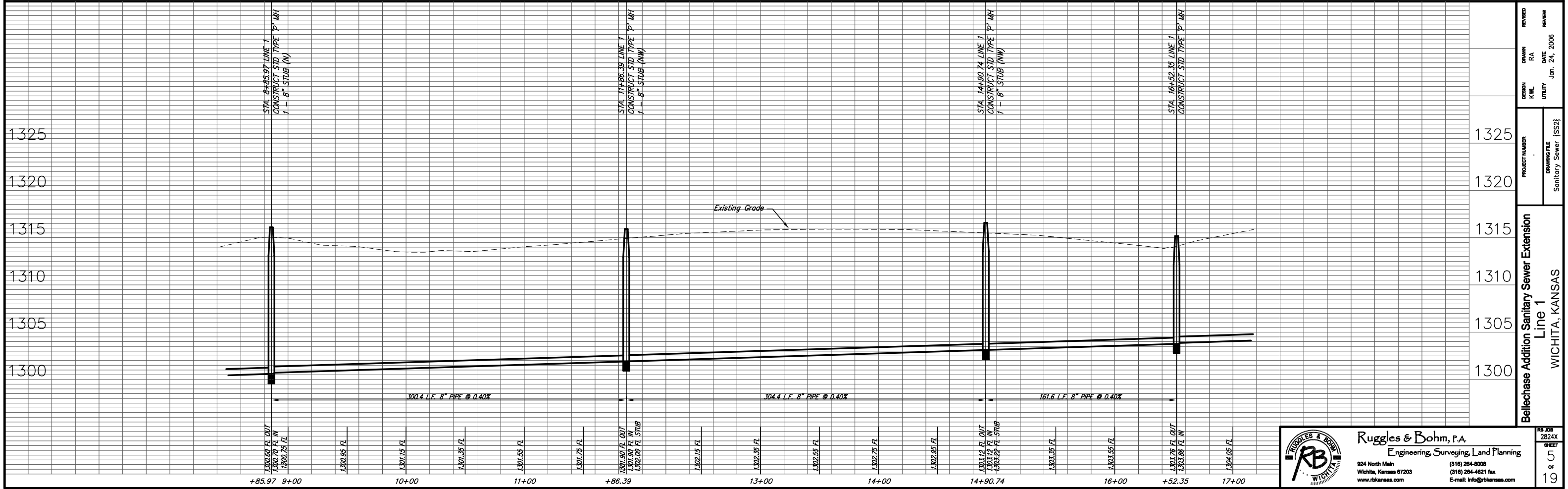


6346-156

6346-157

6346-158

6346-159

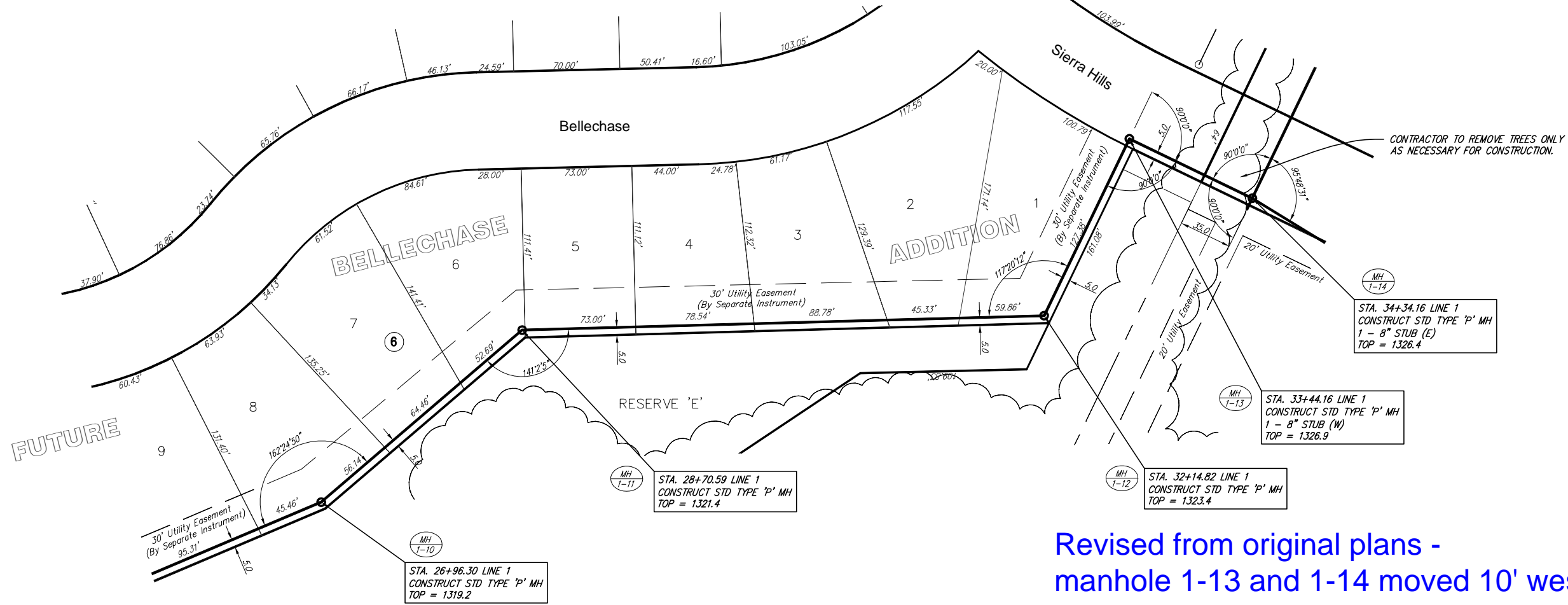


Ruggles & Bohm, P.A.
 Engineering, Surveying, Land Planning
 924 North Main
 Wichita, Kansas 67203
 www.rbkansas.com
 (316) 264-9008
 (316) 264-4621 fax
 E-mail: info@rbkansas.com

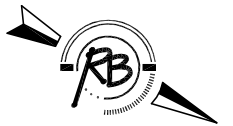
Bellechase Addition Sanitary Sewer Extension
 Line 1
 WICHITA, KANSAS

PROJECT NUMBER: Sanitary Sewer [SS2]
 DRAWING FILE: Sanitary Sewer [SS2]
 DESIGN: KWL
 DRAWN: R.A.
 REVIEW: J.M.
 DATE: Jan. 24, 2006

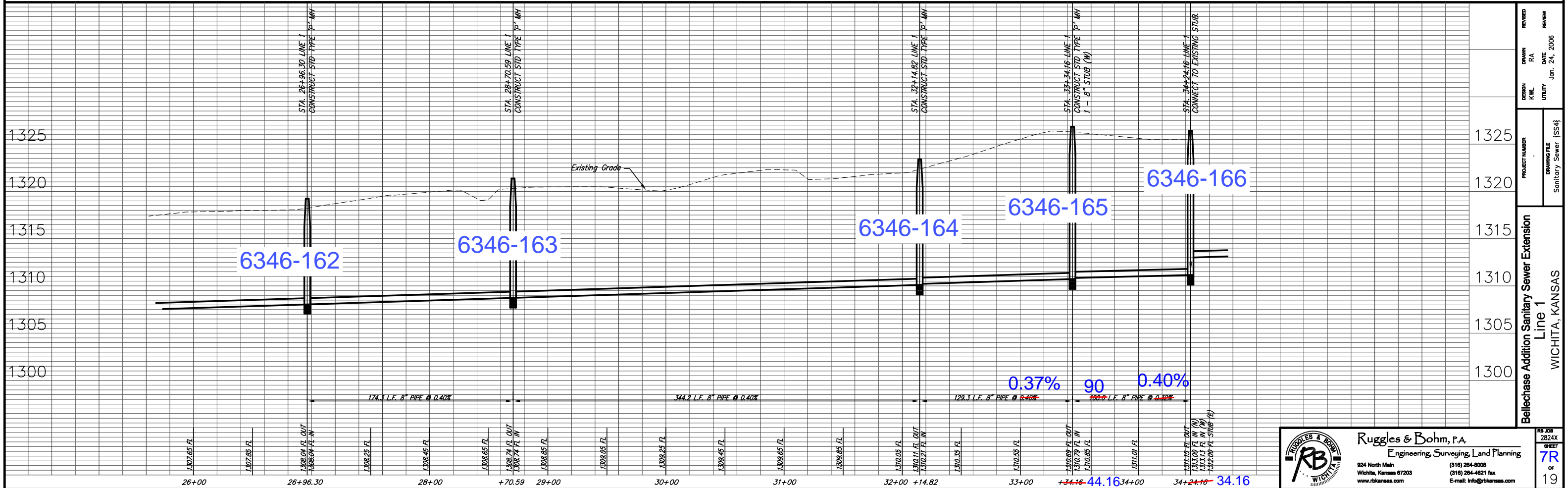
19



Revised from original plans -
manhole 1-13 and 1-14 moved 10' west
(from esmt to the street R/W)



SCALE 1" = 40'
IRON = •



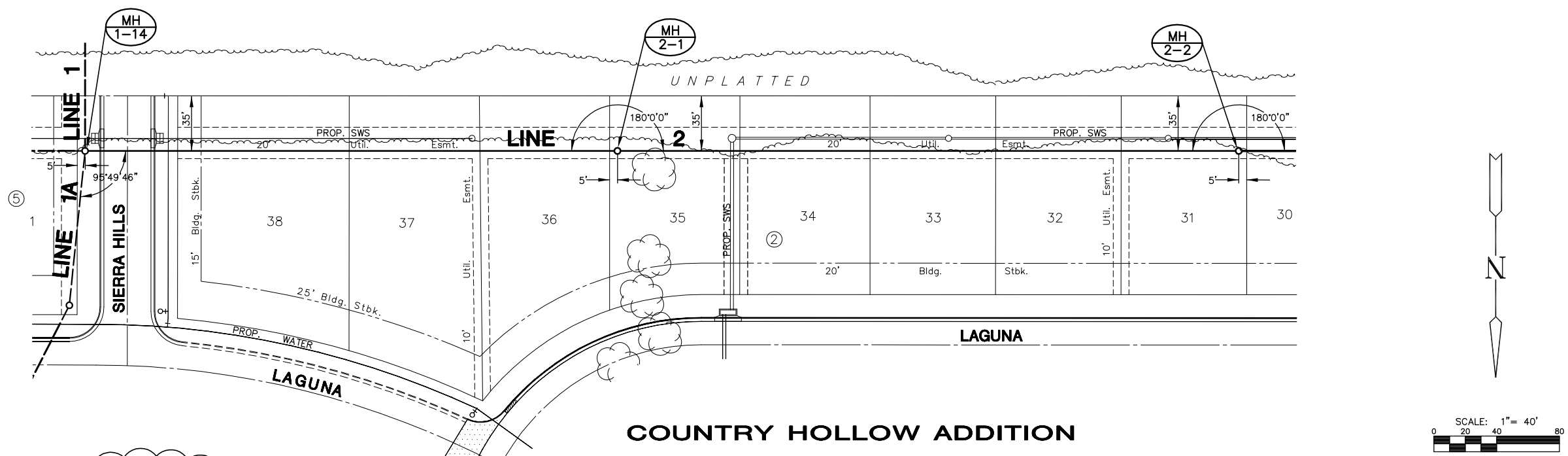
DESIGN	KWL	UTILITY	DATE	Jan. 24, 2006
DRAWN	RA	REVIEW		
PROJECT NUMBER	Sanitary Sewer {SS4}			
DRAWING FILE	Sanitary Sewer {SS4}			
Bellechase Addition Sanitary Sewer Extension Line 1 WICHITA, KANSAS				

Ruggles & Bohm, P.A.
Engineering, Surveying, Land Planning

924 North Main
Wichita, Kansas 67203
www.rbkansas.com

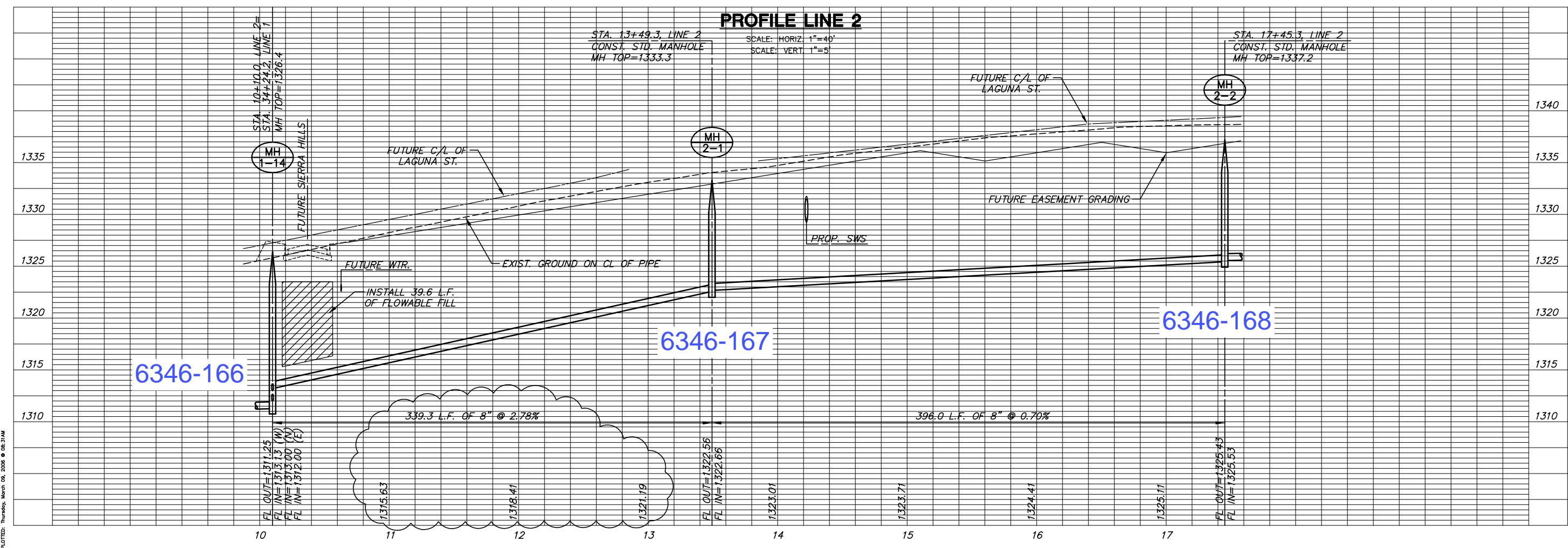
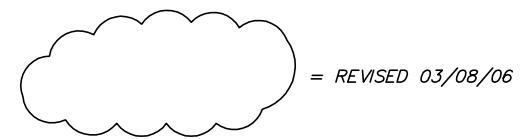
(316) 264-9008
(316) 264-4621 fax
E-mail: info@rbkansas.com

RB JOB
2824X
SHEET
7R
of
19



PLAN LINE 2
SCALE: HORIZ. 1"=40'

NOTE:
SEE PHASE 1A SANITARY SEWER PLANS
(PROJECT #468-84102) FOR DESIGN
INFORMATION ON LINE 1A THAT IS
REFERENCED IN THIS SET OF PLANS.



PROFILE LINE 2
SCALE: HORIZ. 1"=40'
SCALE: VERT. 1"=5'

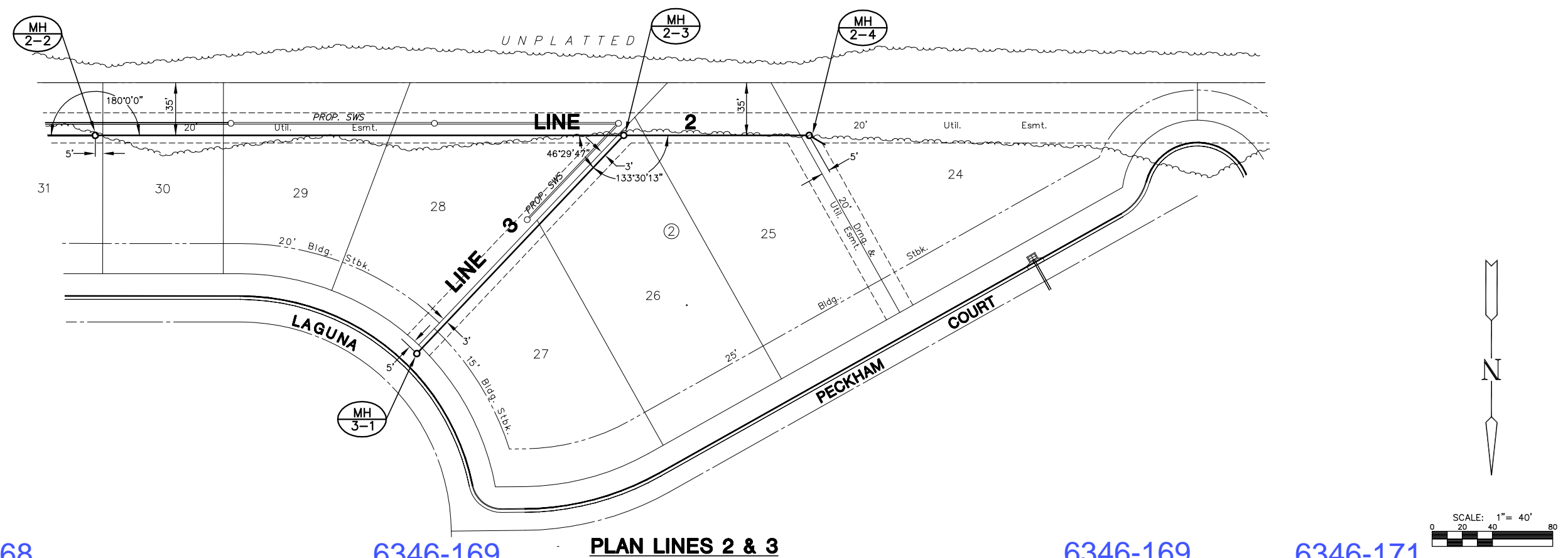
SANITARY SEWER PLANS
COUNTRY HOLLOW
PHASE 1

LINE 2
SHEET TITLE
PROJECT NUMBER
468-84104

DESIGN BY
DFL
DRAWN BY
KKL/DMU
CHECKED BY
GJA

ISSUED
JANUARY 2006
REVISED

SHEET NO.
8 of 19



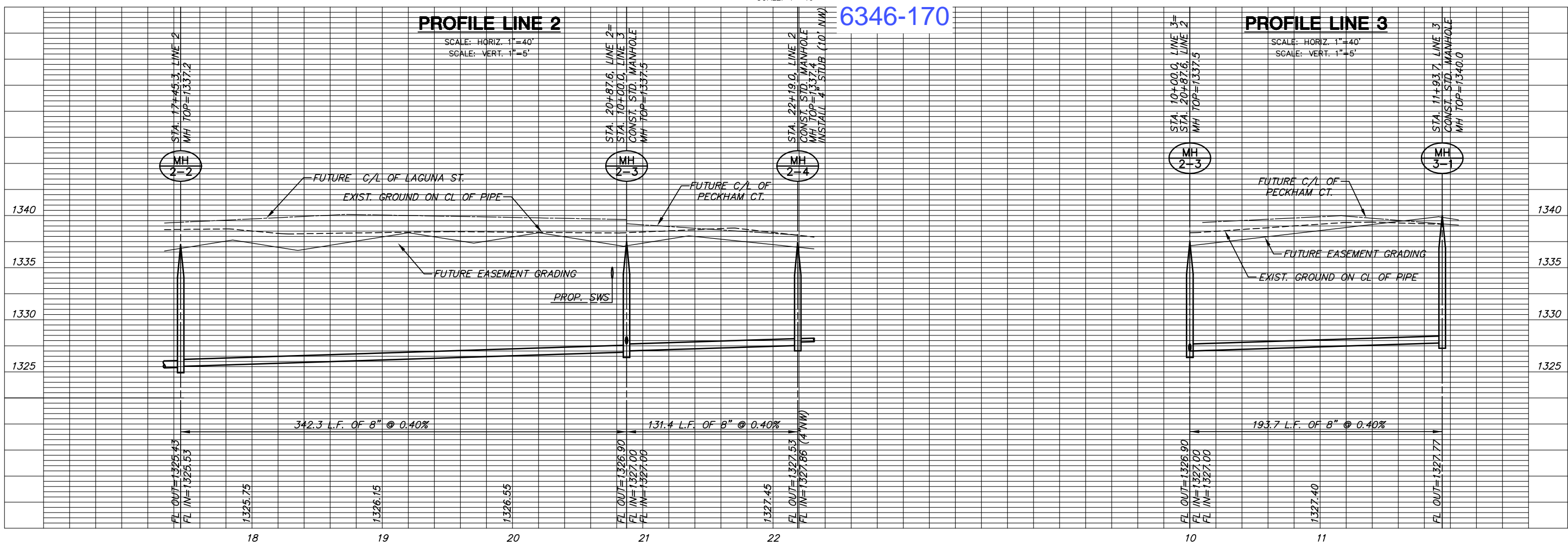
6346-168

6346-169

PLAN LINES 2 & 3
SCALE: 1"=40'

6346-169

6346-171



6346-170

SANITARY SEWER PLANS
COUNTRY HOLLOW
PHASE 1

LINES 2 & 3
SHEET TITLE
468-84104
PROJECT NUMBER

DFL
DESIGN BY
KKL/DMU
DRAWN BY
GJA
CHECKED BY

ISSUED
JANUARY 2006
REVISED

SHEET NO.
9 of 19

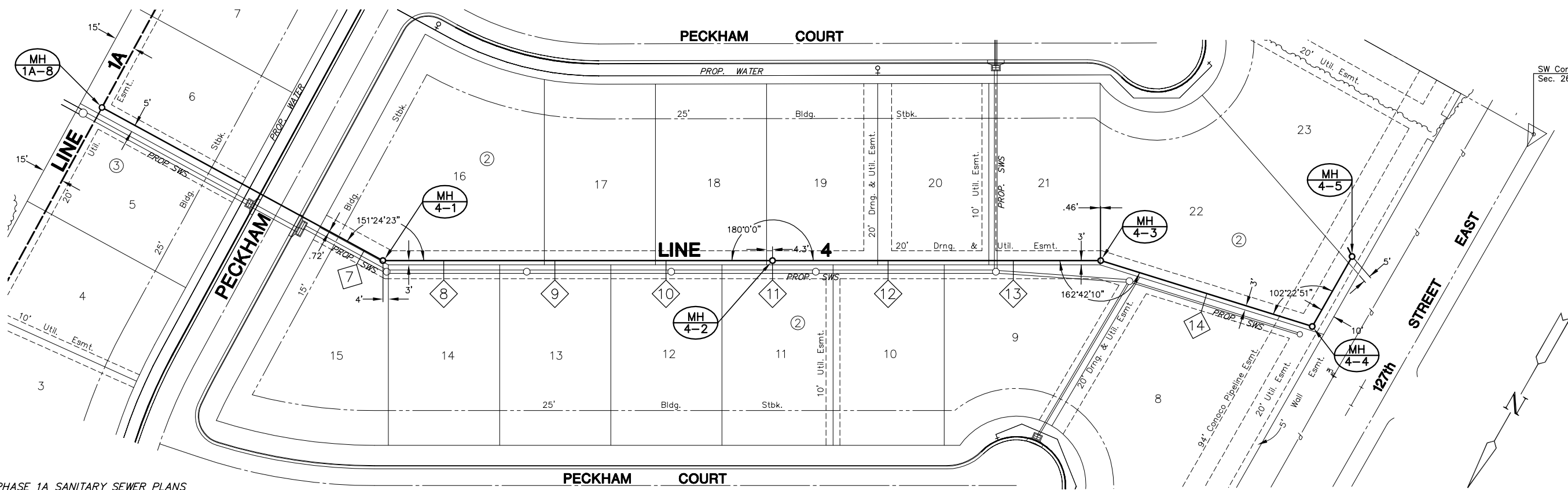
SANITARY SEWER PLANS
COUNTRY HOLLOW
PHASE 1

LINE 4
SHEET TITLE
468-84104
PROJECT NUMBER

DFL
DESIGN BY
KKL/DMU
DRAWN BY
GJA
CHECKED BY

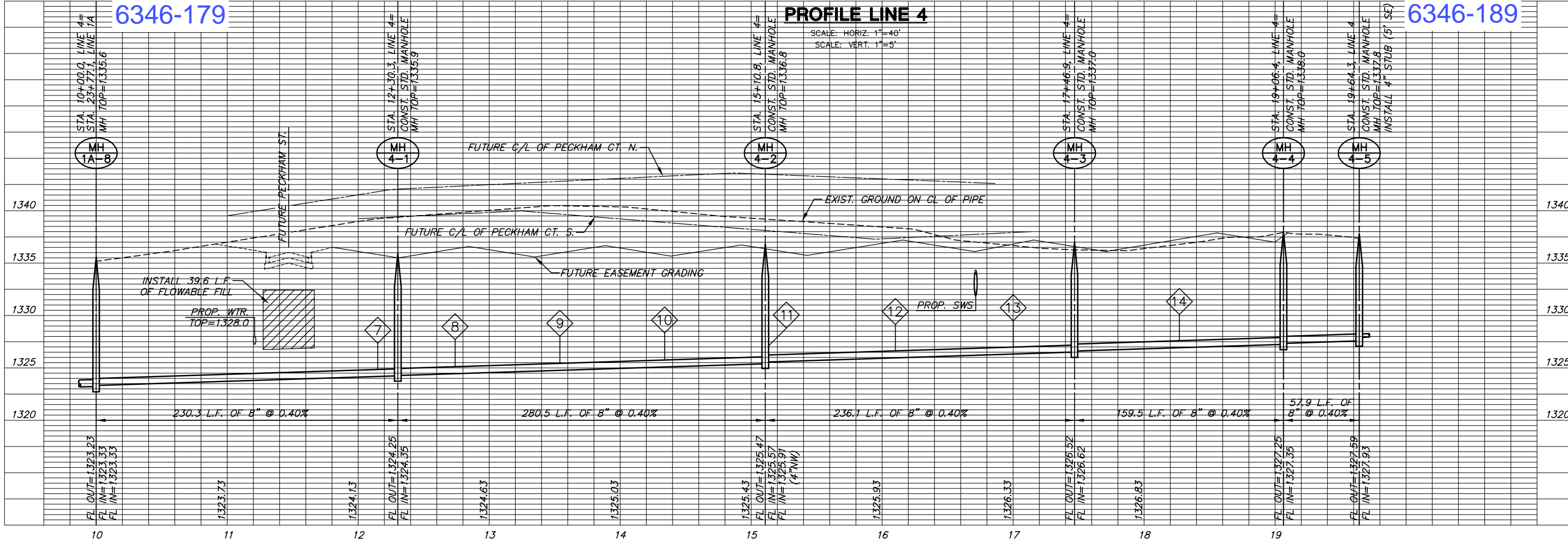
ISSUED
JANUARY 2006
REVISED

SHEET NO.
10 of 19



NOTE:
SEE PHASE 1A SANITARY SEWER PLANS
(PROJECT #468-84102) FOR DESIGN
INFORMATION ON LINE 1A THAT IS
REFERENCED IN THIS SET OF PLANS.

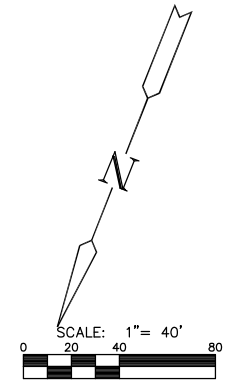
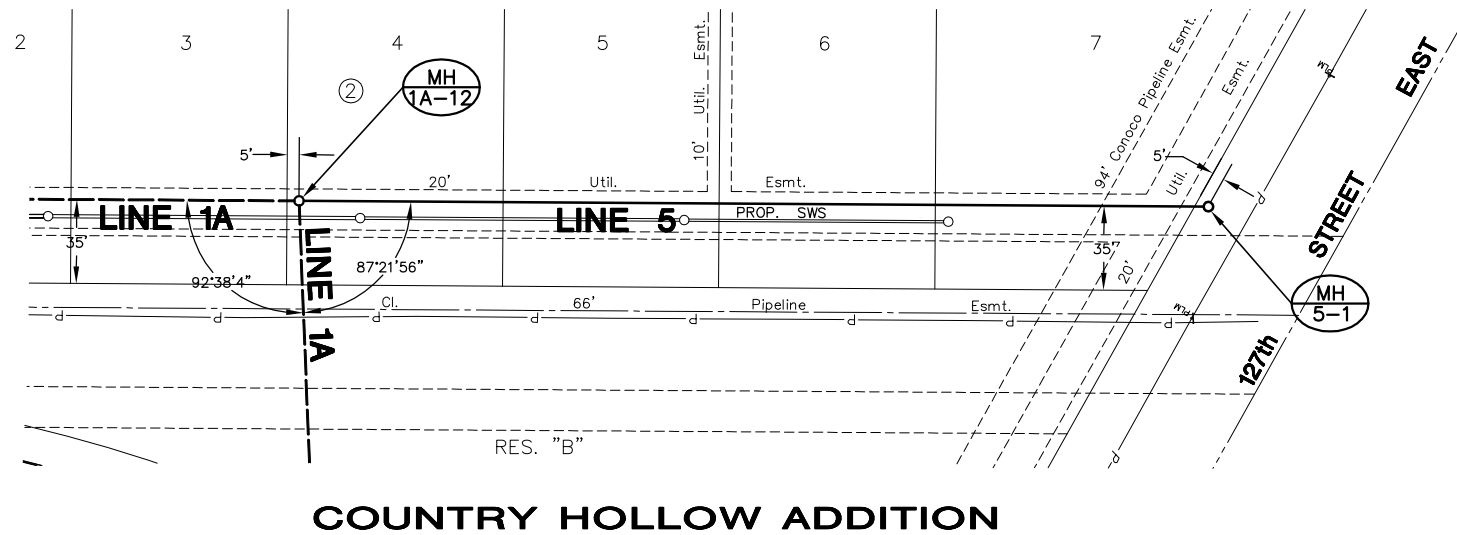
6346-185 6346-186 **PLAN LINE 4** 6346-187 6346-188



PLOTED: Wednesday, January 25, 2006 @ 06:27AM

J:\Civil\04429\DWG\Sew\PHASE 1\04429_B6

COUNTRY HOLLOW ADDITION



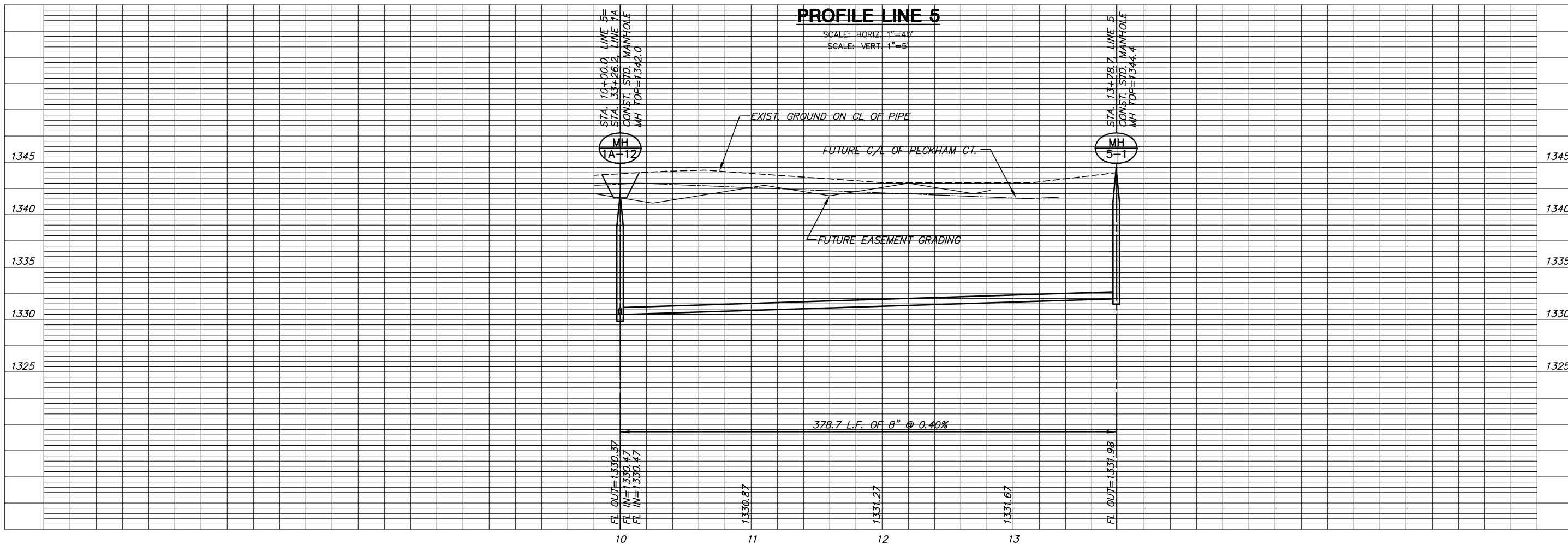
NOTE:
SEE PHASE 1A SANITARY SEWER PLANS
(PROJECT #468-84102) FOR DESIGN
INFORMATION ON LINE 1A THAT IS
REFERENCED IN THIS SET OF PLANS.

6346-183

PLAN LINE 5

SCALE: 1"=40'

6346-190



SANITARY SEWER PLANS
COUNTRY HOLLOW
PHASE 1

LINE 5
SHEET TITLE
PROJECT NUMBER
468-84104

DESIGN BY
DFL
DRAWN BY
KKL/DMU
CHECKED BY
GJA

ISSUED
JANUARY 2006
REVISED

SHEET NO.
11 of 19

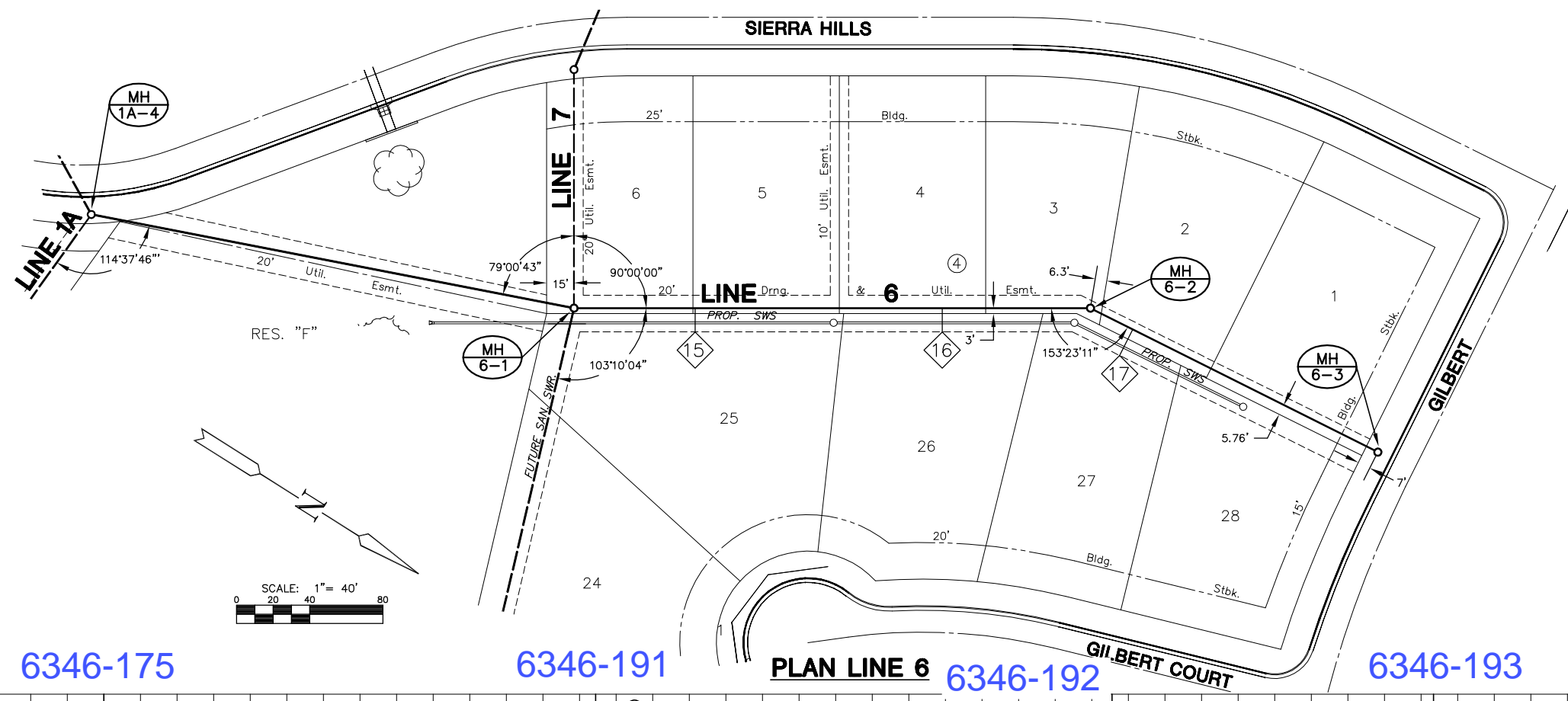
SANITARY SEWER PLANS
COUNTRY HOLLOW
PHASE 1

LINES 6
SHEET TITLE
PROJECT NUMBER
468-84104

DESIGN BY
DFL
DRAWN BY
KKL/DMU
CHECKED BY
GJA

ISSUED
JANUARY 2006
REVISED

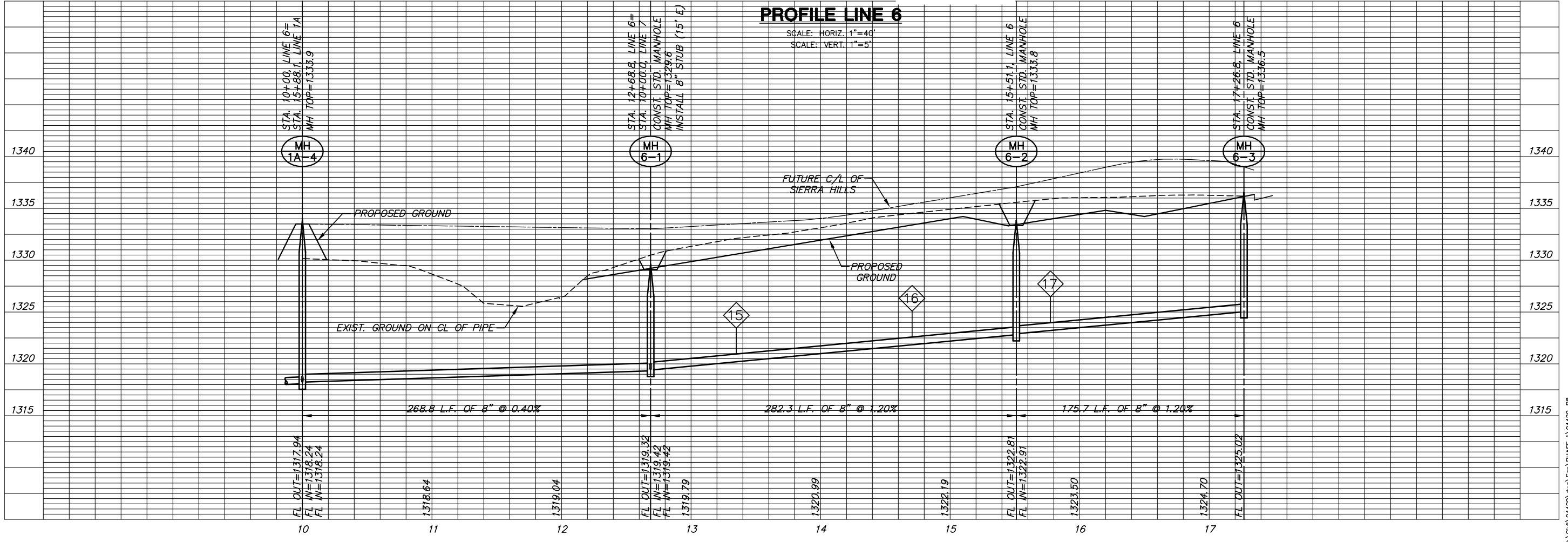
SHEET NO.
12 of 19

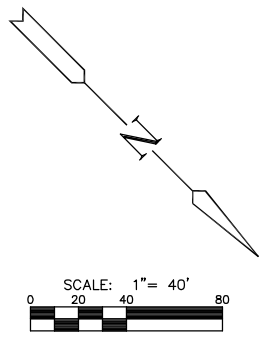
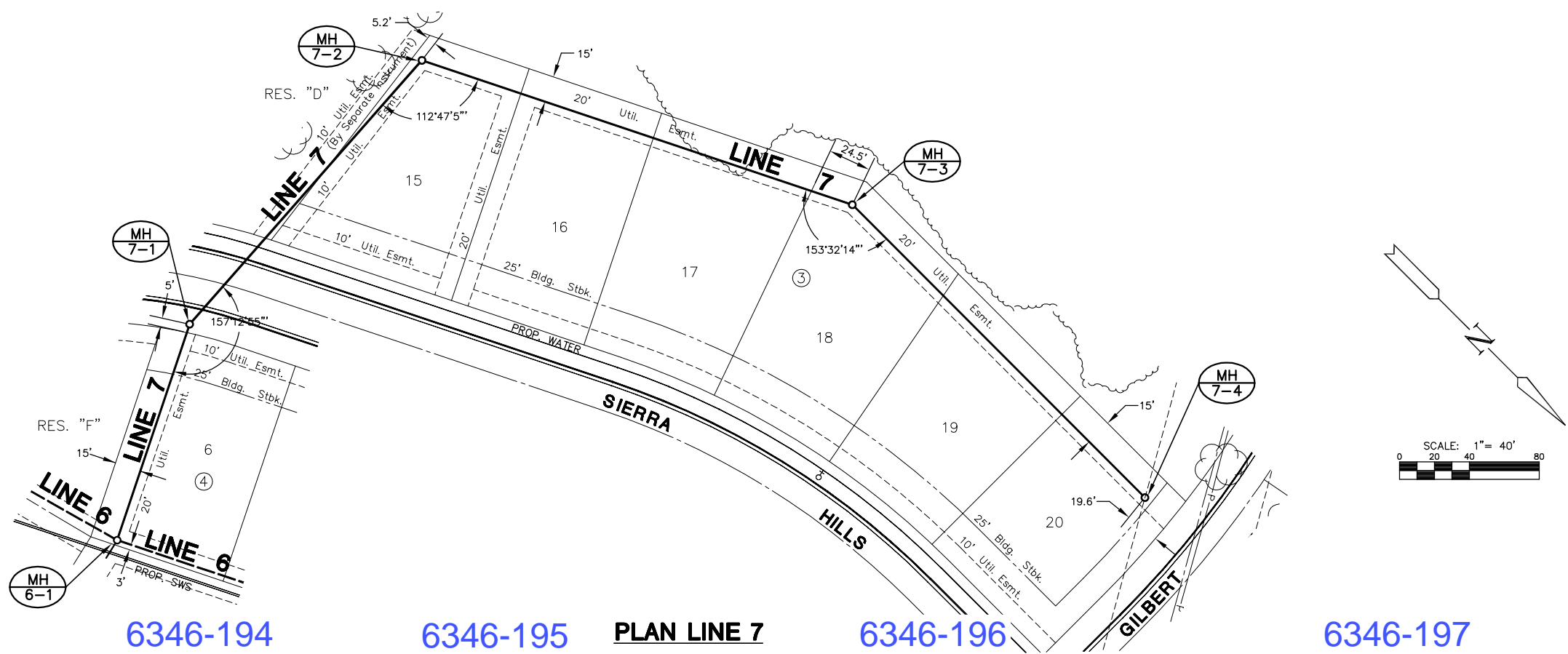


NOTE:
SEE PHASE 1A SANITARY SEWER PLANS
(PROJECT #468-84102) FOR DESIGN
INFORMATION ON LINE 1A THAT IS
REFERENCED IN THIS SET OF PLANS.

PROFILE LINE 6

SCALE: HORIZ. 1" = 40'
SCALE: VERT. 1" = 5'

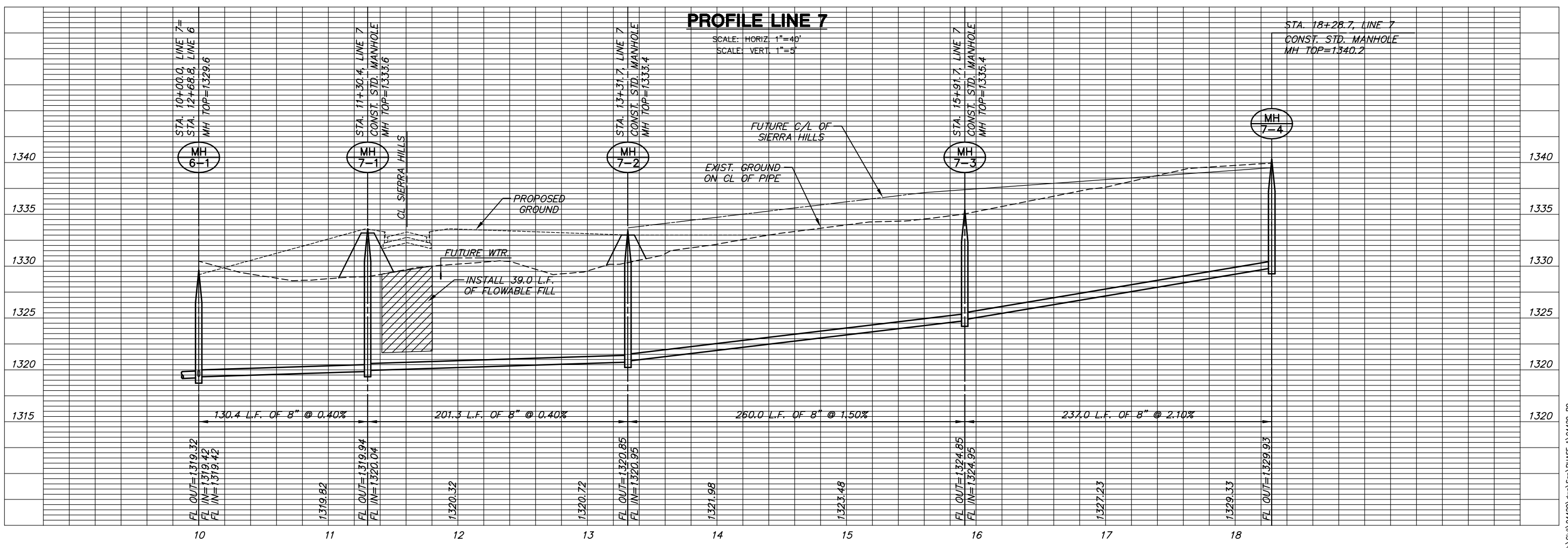




6346-191 6346-194 6346-195 **PLAN LINE 7** 6346-196 6346-197

PROFILE LINE 7

SCALE: HORIZ: 1"=40'
SCALE: VERT: 1"=5'



SANITARY SEWER PLANS
COUNTRY HOLLOW
PHASE 1

LINE 7
SHEET TITLE
PROJECT NUMBER
468-84104

DESIGN BY
DFL
DRAWN BY
KKL/DMU
CHECKED BY
GJA

ISSUED
JANUARY 2006
REVISED

SHEET NO.
13 of 19

PLOTTED: Wednesday, January 25, 2006 @ 06:37AM

J:\Civil\04429\dwg\San\PHASE 1\04429_B9

LOTS	BLOCK	ELEVATION	
		(CITY DATUM)	(NGVD)
1	3	148.6	1336.0
2	3	148.6	1336.0
3	3	148.6	1336.0
4	3	148.6	1336.0
5	3	148.6	1336.0
6	3	148.6	1336.0
7	3	148.6	1336.0
8	3	148.6	1336.0
9	3	148.6	1336.0
10	3	148.6	1336.0
11	3	148.6	1336.0
12	3	148.6	1336.0
13	3	148.6	1336.0
14	3	148.6	1336.0
15	3	148.6	1336.0
16	3	148.6	1336.0
17	3	148.6	1336.0
18	3	148.6	1336.0
19	3	148.6	1336.0
20	3	148.6	1336.0
6	4	138.8	1326.2
7	4	138.8	1326.2
8	4	138.8	1326.2
9	4	138.8	1326.2
10	4	138.8	1326.2
11	4	138.8	1326.2
12	4	138.8	1326.2
13	4	138.8	1326.2
14	4	138.8	1326.2
15	4	138.8	1326.2
16	4	138.8	1326.2
17	4	138.8	1326.2
18	4	138.8	1326.2
19	4	138.8	1326.2
20	4	138.8	1326.2
21	4	138.8	1326.2
22	4	138.8	1326.2
23	4	138.8	1326.2
24	4	138.8	1326.2
25	4	138.8	1326.2
1	5	137.6	1325.0
2	5	137.6	1325.0

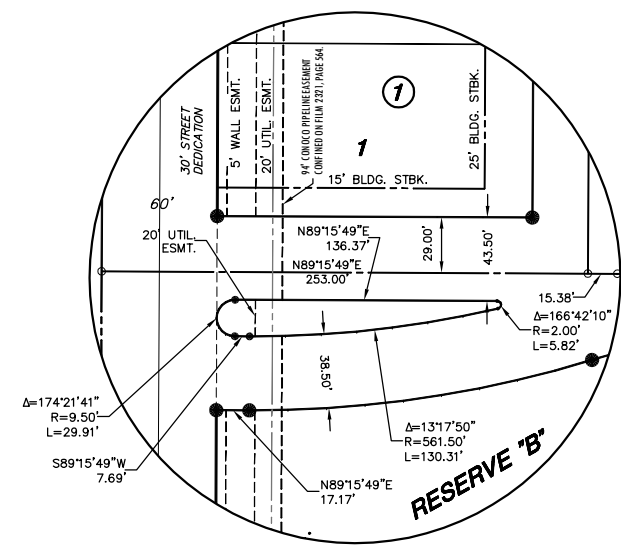
FINAL PLAT

COUNTRY HOLLOW ADDITION

AN ADDITION TO WICHITA, SEDGWICK COUNTY, KANSAS

NW. Cor., NW 1/4, Sec. 26
T27S, R2E, 6TH P.M.
Set 5/8" Rebar w/ MKEC CLS 39 id cap

NE. Cor., NW 1/4, Sec. 26
T27S, R2E, 6TH P.M.
Fnd. 5/8" Rebar w/ o id cap
in thimble



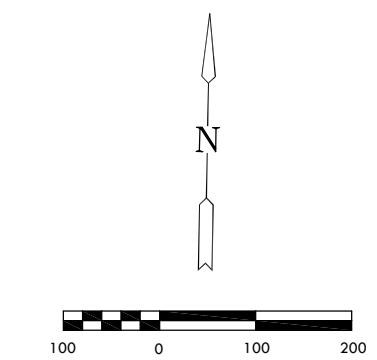
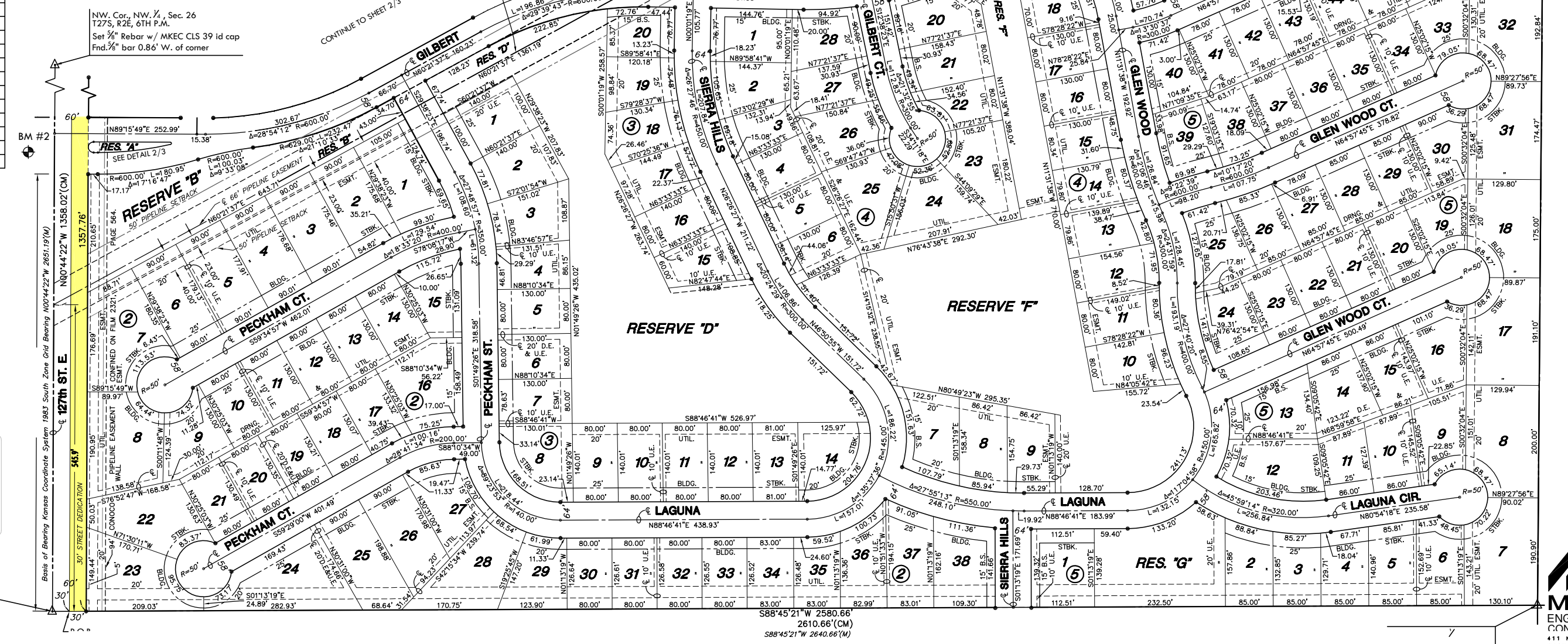
DETAIL RESERVE "A"
1"=50'

LEGEND

- △ = Section Corner Monument Found
- = Found Survey Monument (see annotated caption for type)
- = Set 5/8" Rebar w/ MKEC CLS 39 id. Cap
- (P) = Platted
- (M) = Measured
- (CM) = Calculated from measured
- U.E. & D.E. = Utility Easement and Drainage Easement (unless otherwise annotated)
- - - = 25' Building Setback (unless otherwise annotated)
- - - = 20' Utility Easement (unless otherwise annotated)
- = 30' Street Dedication

BENCH MARKS

- BM #1 Railroad spike in South face of power pole, 25' +/- East and 70' +/- South of West Quarter Corner of Sec. 26, T 27 S, R 2 E.
Elev. = 1337.50 (NGVD)
- BM #2 Chiseled square on top of curb at East end of median island on Lincoln on West side of 127th Street East.
Elev. = 1349.55 (NGVD)



DOCUMENT NO.

SW. Cor., NW 1/4, Sec. 26
T27S, R2E, 6TH P.M.
Fnd. 5/8" Rebar w/ o id cap



J:\Civil\04429.dwg Sam PHASE 1 04429

NW Cor., NW 1/4, Sec. 26
T27S, R2E, 6TH P.M.
Set 5/8" Rebar w/ MKEC CLS 39 id cap
Fnd. 3/8" bar 0.86' W. of corner

KELLOGG ST/US 54
N88°43'30"E 2649.14'(M)

NE Cor., NW 1/4, Sec. 26
T27S, R2E, 6TH P.M.
Fnd. 3/8" Rebar w/o id cap
in thimble

K-DOT R/W CONDEMNATION CASE NO. A-54089

K-DOT R/W CONDEMNATION CASE NO. 91-C-879
Dated: May 20th, 1991

MINIMUM PAD ELEVATIONS (LOWEST OPENINGS)			
LOTS	BLOCK	ELEVATION	
		(CITY DATUM)	(NGVD)
6	1	156.6	1344.0
7	1	156.6	1344.0
8	1	156.6	1344.0
9	1	156.6	1344.0
10	1	156.6	1344.0
11	1	156.6	1344.0
12	1	156.6	1344.0
13	1	151.6	1339.0
14	1	151.6	1339.0
15	1	151.6	1339.0
16	1	151.6	1339.0
17	1	151.6	1339.0
18	1	148.4	1335.8
19	1	148.4	1335.8
20	1	148.4	1335.8
21	1	148.4	1335.8
22	1	148.4	1335.8
23	1	148.4	1335.8
24	1	148.4	1335.8
25	1	148.4	1335.8
37	1	151.6	1339.0

BENCH MARKS

- BM #3 Railroad spike in Southwest face of power 4th pole South of Kellogg on East Side of 127th Street East, 973' South and 24' East of Northwest Corner Sec. 26, T 27 S, R 2 E.
Elev. = 1353.93 (NGVD)
- BM #4 Fence T-post at Northwest corner of property, 40' East of centerline 127th And 10' South of the South Kellogg right of way.
Elev. = 1360.81 (NGVD)
- BM #5 Fence T-post 10' South and 10' West of highway right of way corner, West side K-96 interchange and South side Kellogg, 969' East and 122' South of Northwest corner Sec. 26, T 27 S, R 2 E.
Elev. = 1346.25 (NGVD)
- BM #6 Fence T-post 10' South and 10' West of highway right of way corner, East Side of K-96 interchange and South side of Kellogg, 1696' East and 770' South of the Northwest corner Sec. 26, T 27 S, R 2 E.
Elev. = 1342.08 (NGVD)
- BM #7 Fence T-post 4' South of South Kellogg right of way fence, 145' West-Southwest of the Northeast property corner, 135' West and 176' South of the North Quarter corner of Sec. 26, T 27 S, R 2 E.
Elev. = 1326.40 (NGVD)

LEGEND

- △ = Section Corner Monument Found
- = Found Survey Monument (see annotated caption for type)
- = Set 5/8" Rebar W/ MKEC CLS 39 id. Cap
- (D) = Described
- (P) = Platted
- (M) = Measured
- (CM) = Calculated from measured
- U.E. & D.E. = Utility Easement and Drainage Easement
- = 25' Building Setback (unless otherwise annotated)
- = 20' Utility Easement (unless otherwise annotated)
- = 20' Street Dedication

FINAL PLAT
COUNTRY HOLLOW ADDITION
AN ADDITION TO WICHITA, SEDGWICK COUNTY, KANSAS

DOCUMENT NO.



411 N. WEBB ROAD
WICHITA, KS. 67208
316.684.9800
WWW.MKEC.COM

J:\Civil\04429.dwg San PHASE 1\04429