

Lat. 4, Main 20, SWI  
**SANITARY SEWER IMPROVEMENTS**  
 to serve

**SLATE CREEK ADDITION**

CITY OF WICHITA, KANSAS

James L. Armour, P.E. City Engineer

Project Number

**468-84207**

O.C.A. Number

**744192**

**BENCHMARKS**

BM #1: "□" on west end of median approx. 1020' west of intersection of Hillside and 45th St. N.  
 Elev. = 1348.19 MSL

BM #2: "□" on hub guard at the SE corner of bridge approx. 2130' west of intersection of Hillside and 45th St. N.  
 Elev. = 1346.24 MSL

**GENERAL NOTES:**

1. Contractor will be required to provide notice to utility companies a minimum of forty-eight (48) hours prior to any excavation, as follows:

Kansas One-Call 687-2470

The Contractor must notify the following in case of an emergency:

- Cox Communications 262-4270
- Kansas Gas Service 1-888-482-4950
- Westar Energy 383-8650
- Aquila Energy 1-800-303-0357
- SBC 268-2245
- City of Wichita Water Dept. 268-4563
- City of Wichita Sewer Maint. 268-4024
- City of Wichita Storm Sewer Maint. 268-4090
- City of Wichita Traffic Maint. 268-4034
- Conoco Phillips Pipeline 1-877-267-2290
- Southern Star Pipeline 529-6600
- Kinder Morgan Pipeline 1-888-844-5658

2. Utility service lines, poles, valve boxes, meters, and etcetera are to be adjusted as necessary by others prior to construction unless the plans specifically call for their adjustment by the Contractor or unless the plans specifically identify a utility to be adjusted by its owner during construction. Existing utilities and their location, as shown on the plans, represent the best information obtainable for design. The Contractor will be required to work around existing utilities within the right-of-way which do not conflict with proposed construction.

3. Rubble from the removal of miscellaneous structures and excess excavation which is to be wasted shall be disposed of on sites to be provided by the Contractor. These sites shall be approved by the Engineer as to suitability, appearance and site location. Locations, in the opinion of the Engineer, that will leave an unsightly appearance will not be approved. All disposal sites must be approved by the Kansas Department of Health and Environment. Material either stockpiled or disposed of in a flood plain would require a Kansas State Board of Agriculture permit. Any material dumped in waters of the United States or wetlands is subject to U.S. Corps. of Engineers permitting regulations. Any material buried or stockpiled beyond approved construction limits would require additional archaeological investigations unless buried in a previously approved borrow location.

4. Trees and shrubs in public right-of-way which are in direct conflict with proposed new construction shall be removed by the Contractor with the Engineer's approval. Trees and shrubs which are not in direct conflict with proposed new construction shall be saved and protected from damage.

5. The Contractor shall give all property owners and/or tenants of developed property abutting the construction of this project a minimum of ten (10) days notice prior to start of construction.

6. The Contractor shall be responsible for preserving property irons. The Contractor will be required to re-establish any property irons which are damaged or destroyed by his construction operations. Such irons shall be re-established by a licensed land surveyor in accordance with state laws

7. All excess excavation shall remain on-site and shall be stockpiled or spread at a location determined by the engineer.

8. All existing and proposed erosion control measures including silt fencing, erosion control mat, straw bales, inlet barriers, and const. entrance shall be maintained throughout construction by the contractor and until project is accepted by the City of Wichita. The on-site engineer shall complete weekly reports on the status of erosion control measures. The contractor shall be required to comply with maintenance and/or replacement of erosion control measures as determined by the on-site engineer until project is accepted by City of Wichita. Maintenance and/or replacement of erosion control measures to be paid by L.S. bid item "Site Clearing & Restoration."

9. The Contractor shall be responsible for maintaining continuous flow of sewage through construction. Contractor's proposed method for maintaining sewage flow shall be approved by the Engineer. Cost of maintaining flow of sewage through construction will not be paid for directly and this cost shall be considered as subsidiary to the other pay items of work.

10. Contractor shall grade around exposed manholes at a 1:1 slope. Manholes set lower than existing grade shall have a 9" berm constructed around manhole to prevent infiltration into sanitary sewer system. Cost of dirt, labor, equipment, etc. to be incidental to cost of manhole. Easements shall be graded with the street improvement project as part of the mass grading plan.

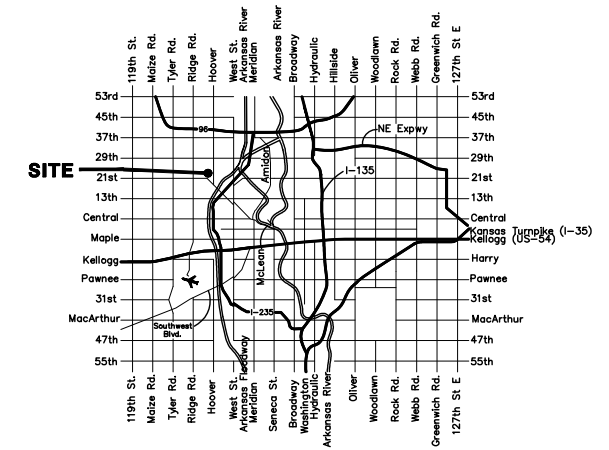
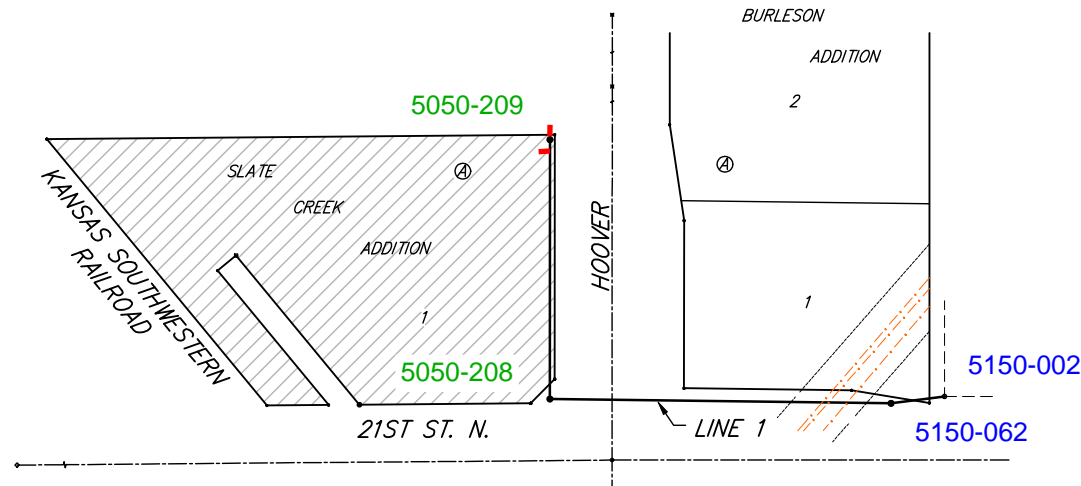
11. All Risers shall be constructed using Method "B."

12. All areas disturbed during construction shall be seeded at 300 lbs./acre with Rye Grass immediately following construction in that area. Contractor shall prepare ground per City Specifications.

13. Contractor shall coordinate construction with Storm Water Drain contractor. Mass Grading construction will begin before start of construction of this project.



Scale: 1" = 100'



**Vicinity Map**

**Dondlinger & Sons Construction Co., Inc. - Contractor**  
**Sholander, City - Inspector**  
 Released 2/7/07  
 Riser & Stub  
 .pdf by JDL 2/12/07

**Benefit District**



Baughman Company, P.A. 315 Ellis St. Wichita, KS 67211 P 316-262-7271 F 316-262-0149  
 ENGINEERING | SURVEYING | PLANNING | LANDSCAPE ARCHITECTURE

**BENCHMARKS:**

BM #1: "I" on west end of median approx. 1020' west of intersection of Hillside and 45th St. N.  
Elev. = 1348.19 MSL

BM #2: "I" on hub guard at the SE corner of bridge approx. 2130' west of intersection of Hillside and 45th St. N.  
Elev. = 1346.24 MSL

Sta. 2+85 to Sta. 3+10  
25 L.F. of concrete encasement.

**CAUTION! x 2**  
Ex. Conoco Phillips Gas Pipeline Crossings. Contact Andre Martinez at (316) 655-5058 at least 2 weeks prior to construction.

**CAUTION!**  
Ex. 8" Enbridge Gas Pipeline Crossing. Contact Scott Hearn at (316) 832-1814 at least 2 weeks prior to construction.

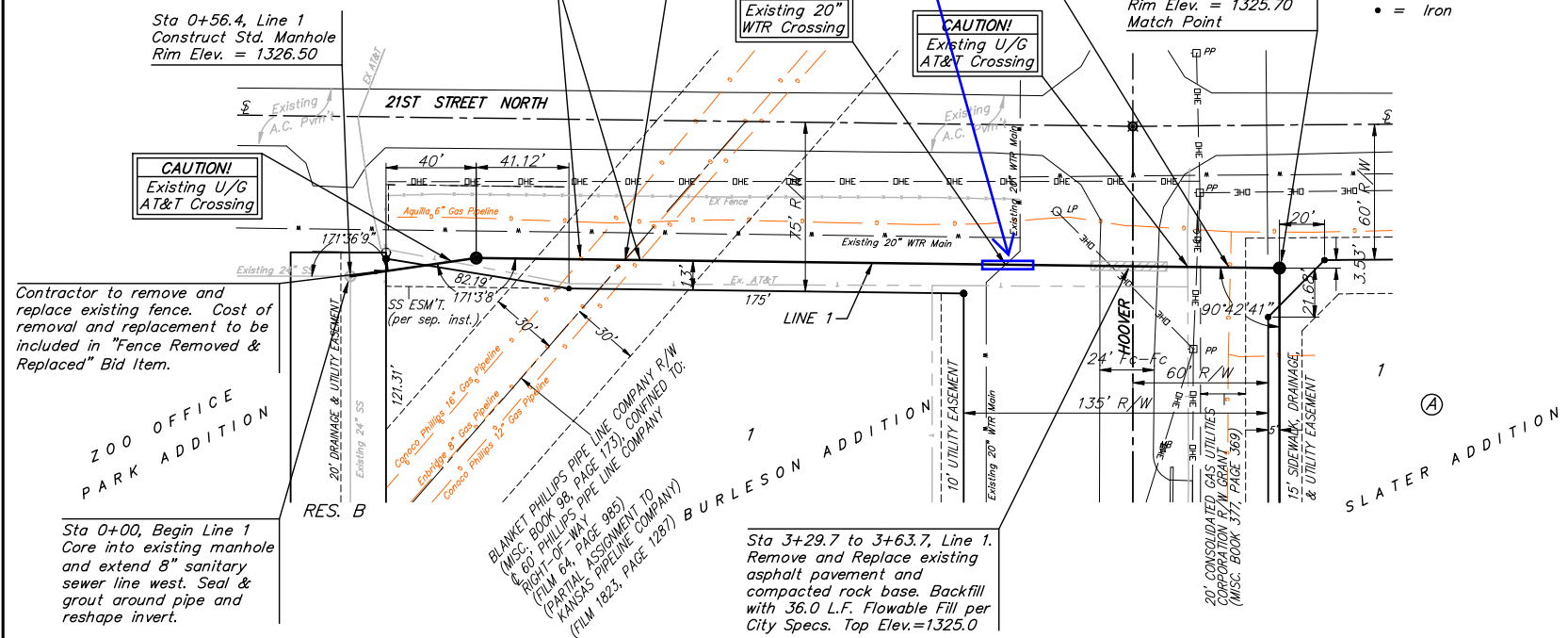
**CAUTION!**  
Ex. 6" Aquilla Gas Pipeline Crossing. Contact Calvin Briggs at (316) 941-1608 at least 2 weeks prior to construction.

**CAUTION!**  
Existing 20" WTR Crossing

**CAUTION!**  
Existing U/G AT&T Crossing

Sta 4+12.5, Line 1  
Construct Std. Manhole Rim Elev. = 1325.70  
Match Point

Scale:  
1" = 40' Horizontal  
1" = 5' Vertical  
• = Iron



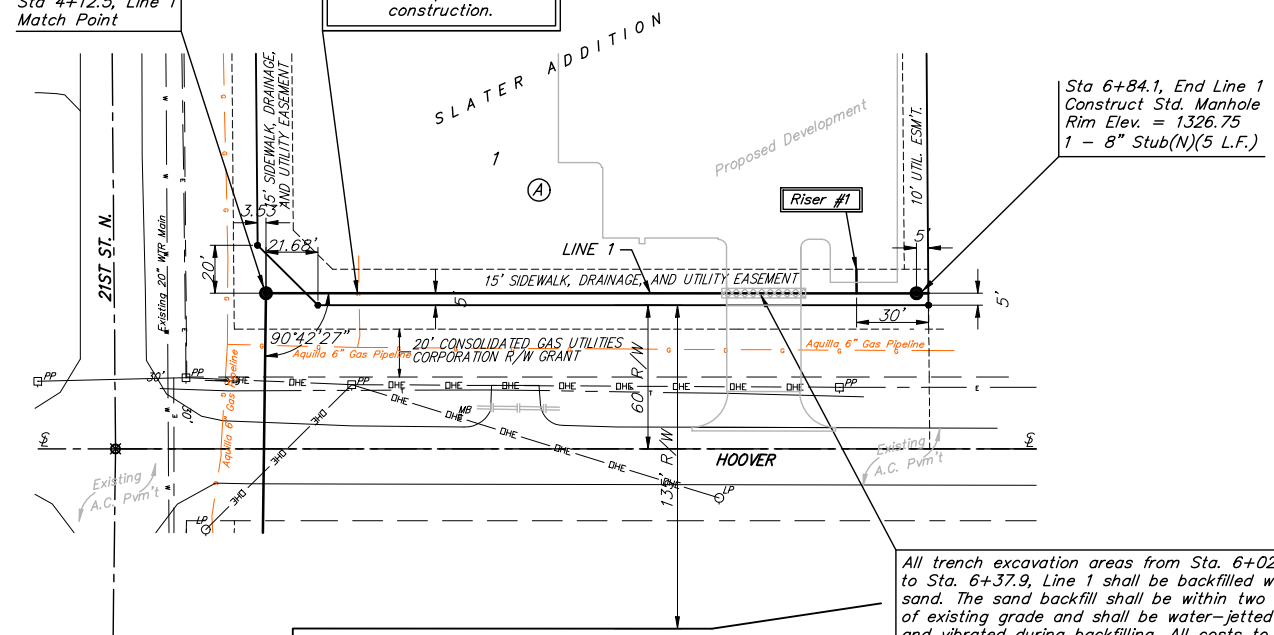
**SEWER SERVICE TABLE**

NUMBER	TYPE	LOCATION			FOR INFORMATION ONLY	
		LOT NO.	BLOCK NO.	LINE NO.	STATION DIRECTION	APPROXIMATE LENGTH 4" PIPE VERTICAL HORIZONTAL
1	8" x 4" Tee Saddle	1	A	1	6+50/Lt.	6.0' -10' 2'

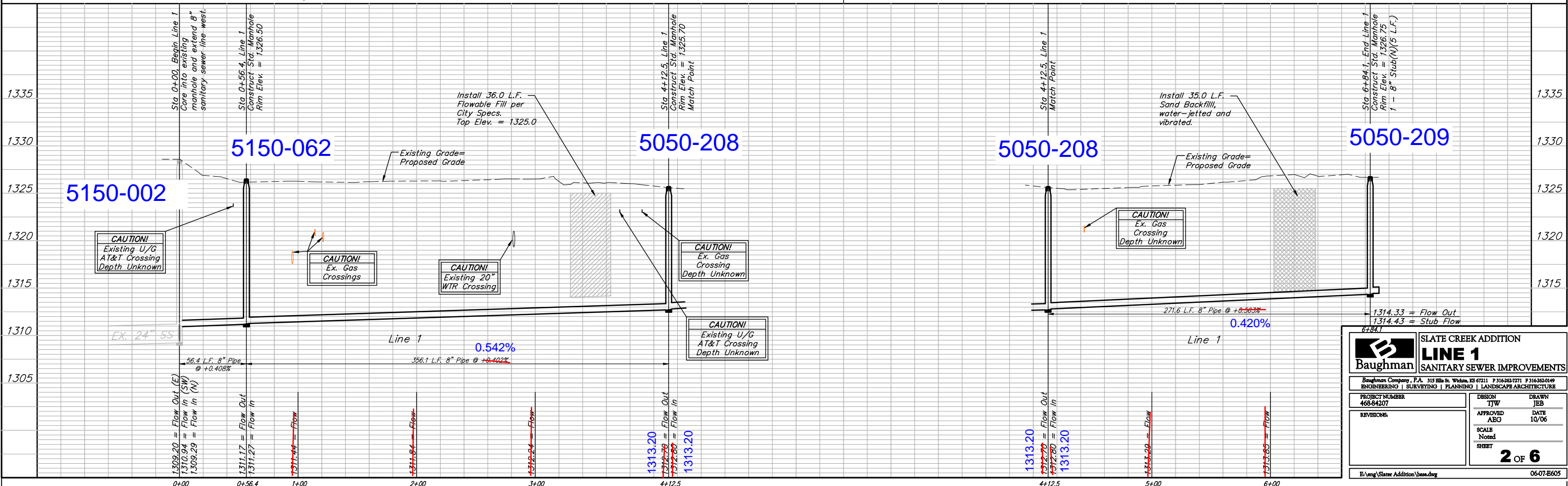
NOTE: Vertical Riser Pipe shall be extended to 6' below proposed ground elevation.

**CAUTION!**  
Ex. 6" Aquilla Gas Pipeline Crossing. Contact Calvin Briggs at (316) 941-1608 at least 2 weeks prior to construction.

Sta 4+12.5, Line 1  
Match Point



Scale:  
1" = 40' Horizontal  
1" = 5' Vertical  
• = Iron



**Baughman** SLATE CREEK ADDITION  
**LINE 1**  
SANITARY SEWER IMPROVEMENTS

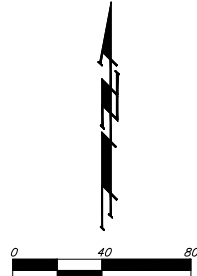
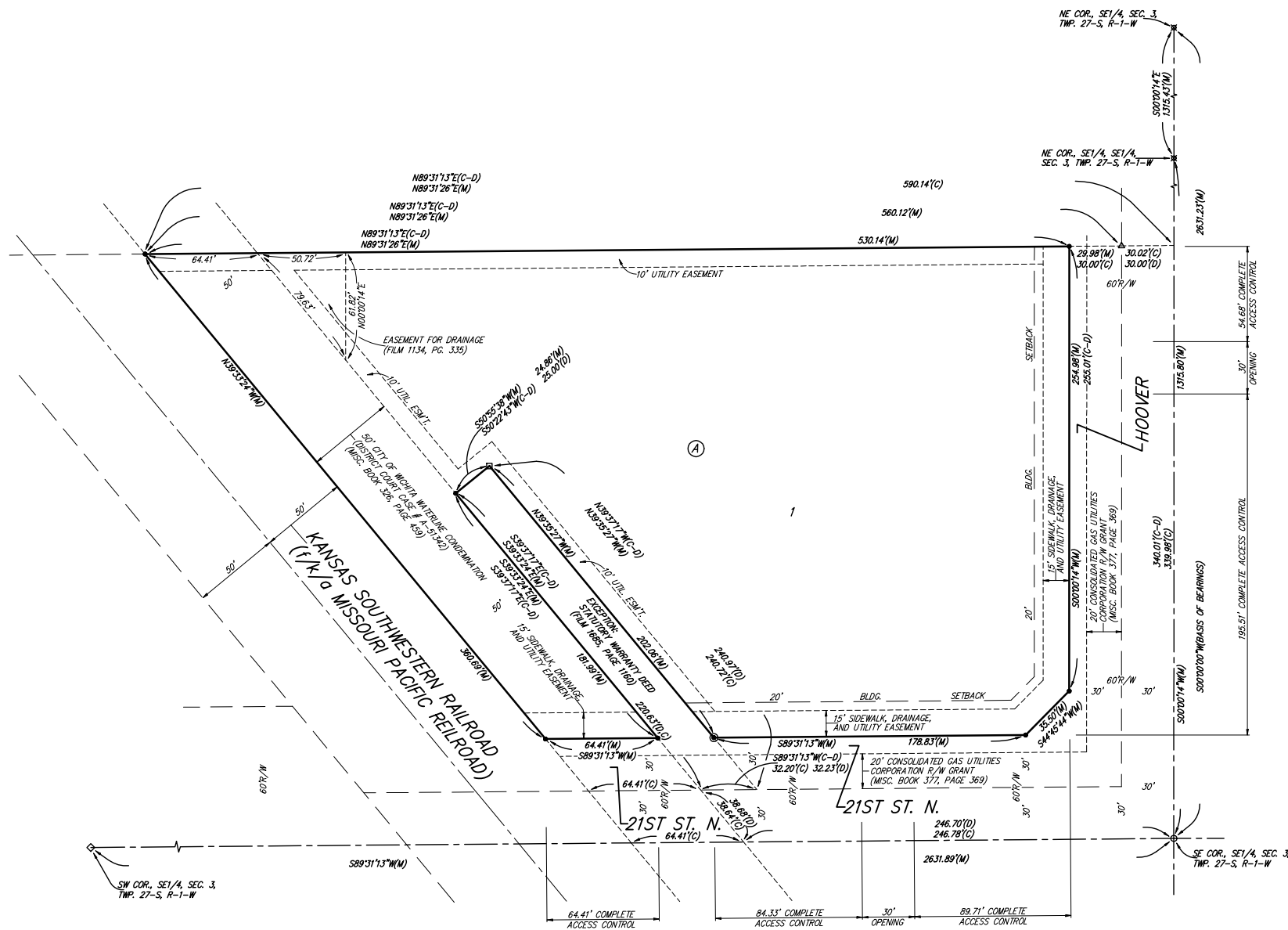
Baughman Company, P.A. 315 Ellis St. Wichita, KS 67211 P 316-262-7771 F 316-262-0149  
ENGINEERING | SURVEYING | PLANNING | LANDSCAPE ARCHITECTURE

PROJECT NUMBER: 468-84207  
DESIGN: TJW  
DRAWN: JEB  
APPROVED: ABG  
DATE: 10/06  
SCALE: Noted  
SHEET: 2 OF 6

El:\eng\Slater Addition\Bases.dwg 06-07-B605

# SLATE CREEK

## AN ADDITION TO WICHITA, SEDGWICK COUNTY, KANSAS



- (M) = MEASURED
- (D) = DESCRIBED
- (C) = CALCULATED PER MEASURED INFO
- (C-D) = CALCULATED PER DESCRIBED INFO
- = #4 REBAR W/ "BAUGHMAN" CAP (SET)
- = #6 REBAR IN THIMBLE (FOUND)
- ⊠ = #6 REBAR W/ ILLEGIBLE CAP (FOUND)
- = #4 REBAR (FOUND)
- △ = 3/4" IRON (FOUND)
- ◇ = #4 REBAR W/ ILLEGIBLE CAP (FOUND)
- ⊙ = SMALL RAILROAD SPIKE (SET)

**NOTE:**  
A DRAINAGE PLAN HAS BEEN DEVELOPED FOR THIS SUBDIVISION AND IS ON FILE WITH THE CITY OF WICHITA, KANSAS. DRAINAGE INTENT SHALL REMAIN AS DEPICTED OR AS MODIFIED WITH THE APPROVAL OF THE CITY ENGINEER OF THE CITY OF WICHITA, KANSAS. NO OBSTRUCTIONS WHICH WOULD PREVENT THE FLOW OF THIS DRAINAGE PLAN SHALL BE ALLOWED.

State of Kansas) SS We, *Baughman Company, P.A.*, Surveyors in Sedgwick County) do hereby certify that we have surveyed and platted "SLATE CREEK", an Addition to Wichita, Sedgwick County, Kansas and that the accompanying plat is a true and correct exhibit of the property surveyed, described as follows: The south 677 feet of the SE 1/4 of Sec. 3, Twp. 27-S, R-1-W of the 6th P.M., Sedgwick County, Kansas, lying east of the Missouri Pacific Railroad, (now Kansas Oklahoma Railroad), right-of-way, EXCEPT the north 337 feet thereof, and EXCEPT that part described as commencing at the SE corner of said SE 1/4; thence west along the south line of said SE 1/4 on an assumed bearing of N90°00'00"W, for a distance of 246.70 feet to the east line of a City of Wichita right-of-way as described per District Court Condemnation Case A-51342; thence N39°08'30"W along the east line of said C.O.W. right-of-way for a distance of 38.68 feet to the north right-of-way line of 21st Street North for a point of beginning; thence N39°08'30"W, along the east line of said C.O.W. right-of-way for a distance of 220.63 feet; thence N50°51'30"E, for a distance of 25.00 feet; thence S39°08'30"E, for a distance of 240.97 feet to the north right-of-way of said 21st Street North; thence S90°00'00"W along the north right-of-way line of said 21st Street North, for a distance of 32.23 feet to the point of beginning, all being subject to road rights-of-way of record.

Existing public easements and dedications being vacated by virtue of K.S.A. 12-512(b).

*Baughman Company, P.A.*

This plat of "SLATE CREEK", an Addition to Wichita, Sedgwick County, Kansas has been submitted to and approved by the Wichita-Sedgwick County Metropolitan Area Planning Commission, Wichita, Kansas.

Dated this \_\_\_\_\_ day of \_\_\_\_\_, 2006.

Wichita-Sedgwick County Metropolitan Area Planning Commission

\_\_\_\_\_, Chair  
*Harold L. Warner, Jr.*

\_\_\_\_\_, Secretary  
*John L. Schlegel*

This plat approved and all dedications shown hereon accepted by the City Council of the City of Wichita, Kansas, this \_\_\_\_\_ day of \_\_\_\_\_, 2006.

\_\_\_\_\_, Mayor  
*Carlos Mayans*

\_\_\_\_\_, City Clerk  
*Karen Sublett*

\_\_\_\_\_, Surveyor  
*Michael G. Conrey*

Know all men by these presents that we, the undersigned, have caused the land in the surveyors certificate to be platted into Lot, a Block, and Streets to be known as "SLATE CREEK", an Addition to Wichita, Sedgwick County, Kansas. The utility easements are hereby granted as indicated for the construction and maintenance of all public utilities. The sidewalk, drainage, and utility easements are hereby granted as indicated for the construction and maintenance of public sidewalks, for drainage purposes, and for the construction and maintenance of all public utilities. The streets are hereby dedicated to and for the use of the public. Access controls shall be as depicted on the face of the plat and are hereby granted to the City of Wichita, Kansas.

*Slater Holdings, LLC, a Kansas limited liability company*

\_\_\_\_\_, Manager  
*Katherine E. Slater*

State of Kansas) SS The foregoing instrument acknowledged before me, this \_\_\_\_\_ day of \_\_\_\_\_, 2006, by *Katherine E. Slater, Manager of Slater Holdings, LLC, a Kansas limited liability company, on behalf of the limited liability company.*

\_\_\_\_\_, Notary Public

My App't. Exp. \_\_\_\_\_

We, the undersigned holders of a mortgage on the above described property, do hereby consent to this plat of "SLATE CREEK", an Addition to Wichita, Sedgwick County, Kansas.

*Fidelity Bank*

State of Kansas) SS The foregoing instrument acknowledged before me, this \_\_\_\_\_ day of \_\_\_\_\_, 2006, by \_\_\_\_\_, of *Fidelity Bank, on behalf of the bank.*

\_\_\_\_\_, Notary Public

My App't. Exp. \_\_\_\_\_

Reviewed in accordance with K.S.A. 58-2005 on this \_\_\_\_\_ day of \_\_\_\_\_, 2006.

\_\_\_\_\_, County Clerk  
*Don Brace*

State of Kansas) SS This is to certify that this plat has been filed for record in the office of the Register of Deeds, this \_\_\_\_\_ day of \_\_\_\_\_, 2006 at \_\_\_\_\_ o'clock \_\_\_\_\_ M; and is duly recorded.

\_\_\_\_\_, Register of Deeds  
*Bill Meek*

\_\_\_\_\_, Deputy  
*Tonya Buckingham*

**Baughman Company, P.A.**  
315 Ellis St., Wichita, KS 67211 P 316-262-7371 F 316-262-0149  
ENGINEERING | SURVEYING | PLANNING | LANDSCAPE ARCHITECTURE  
F:\PLAT\SLATER ADD\DWG\SLATER.DWG