

SAVED 6/12/2024 8:43:50 AM BY SCOTT.CANFIELD  
 PLOTTED 6/12/2024 10:26:35 AM BY CATHY LINK  
 U:\WICHITA-CIVIL\2022\220496\00\PECC\DRAWINGS\31ST AND OLIVERUS\_ALLTRAFFICPDF\TE-KOOT  
 STANDARDS.DWG

Plotted by : pvmushock  
 File : te704.dgn  
 6-JUN-2022 21:54

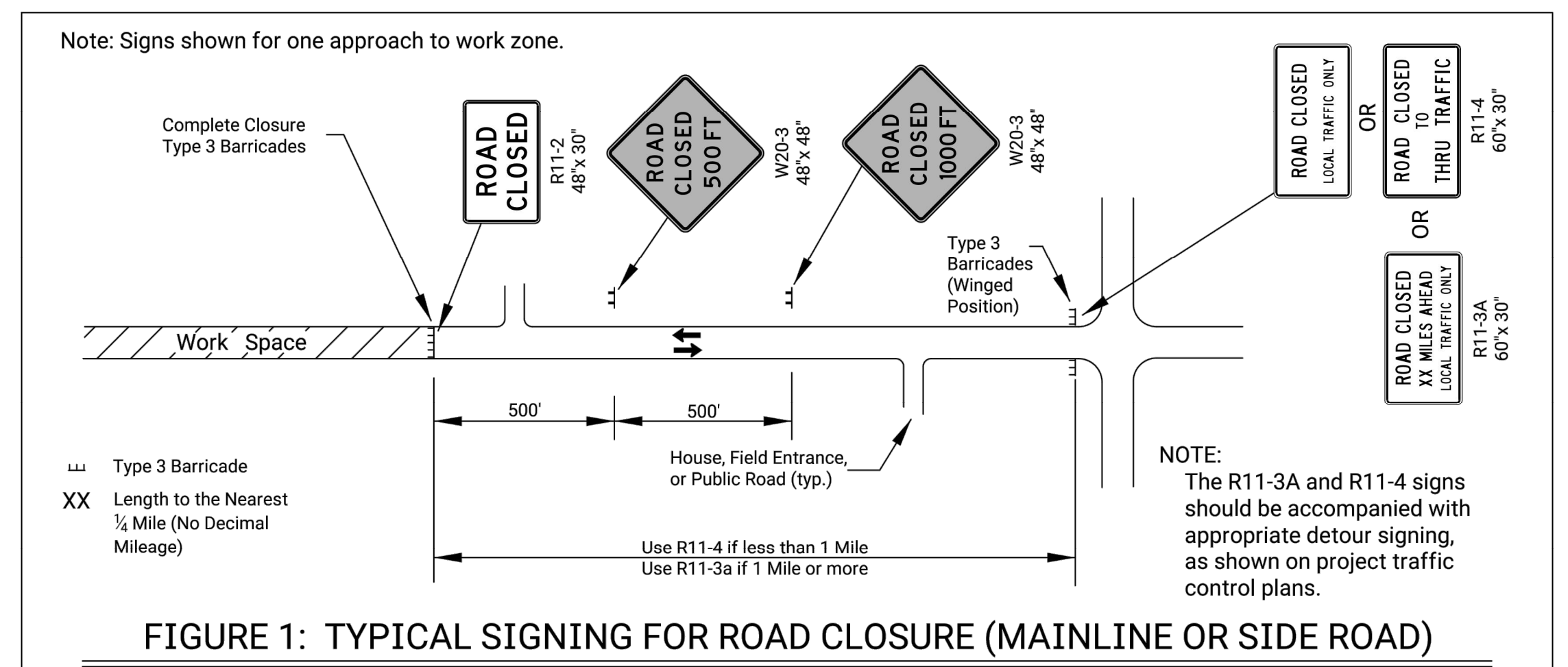


FIGURE 1: TYPICAL SIGNING FOR ROAD CLOSURE (MAINLINE OR SIDE ROAD)

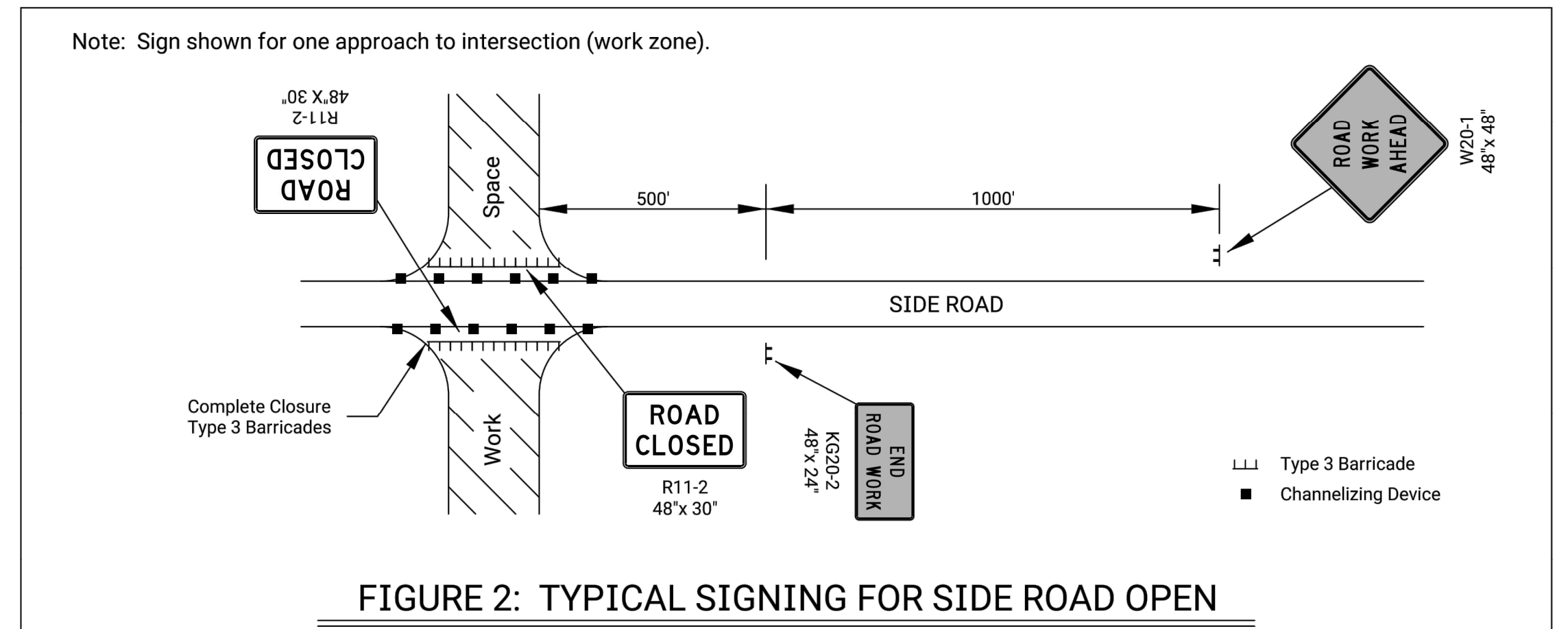


FIGURE 2: TYPICAL SIGNING FOR SIDE ROAD OPEN

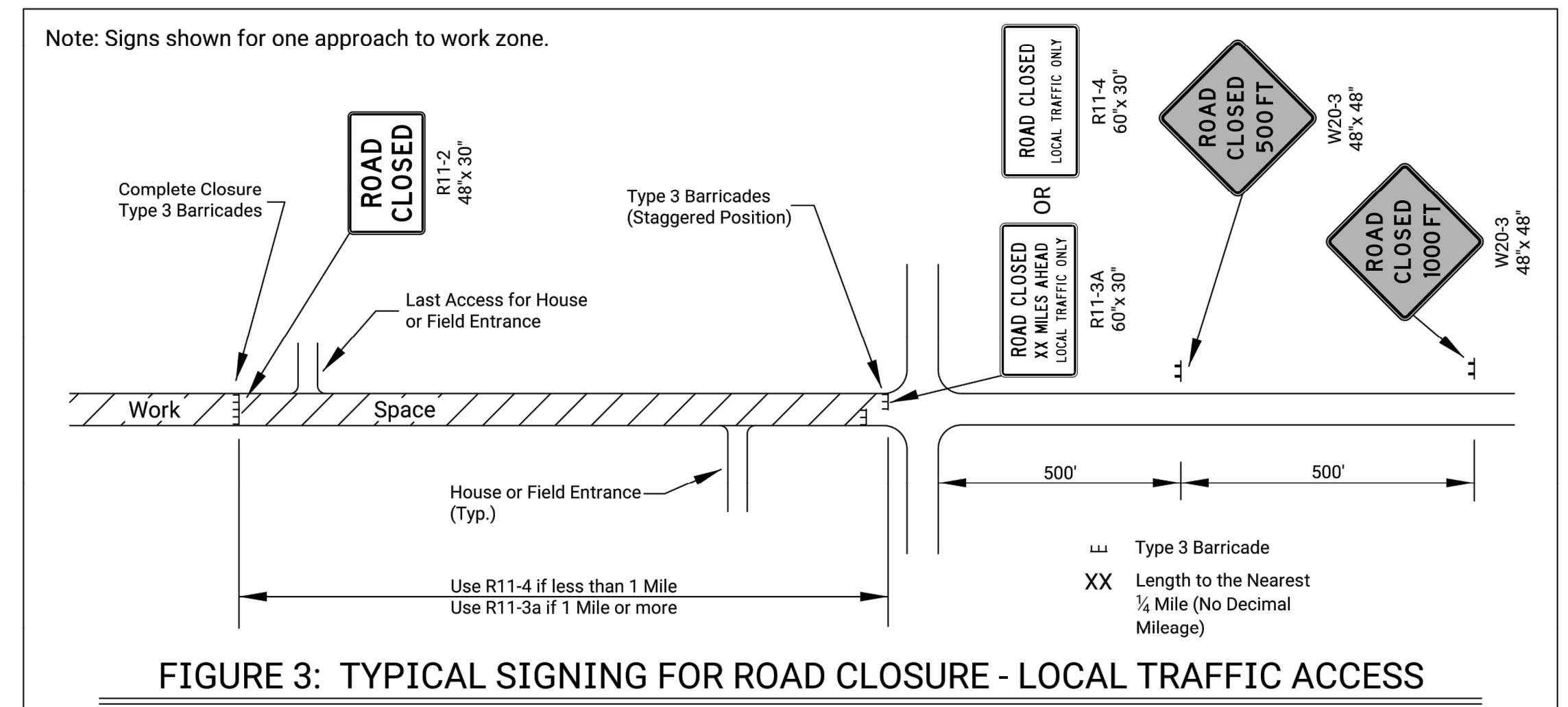


FIGURE 3: TYPICAL SIGNING FOR ROAD CLOSURE - LOCAL TRAFFIC ACCESS

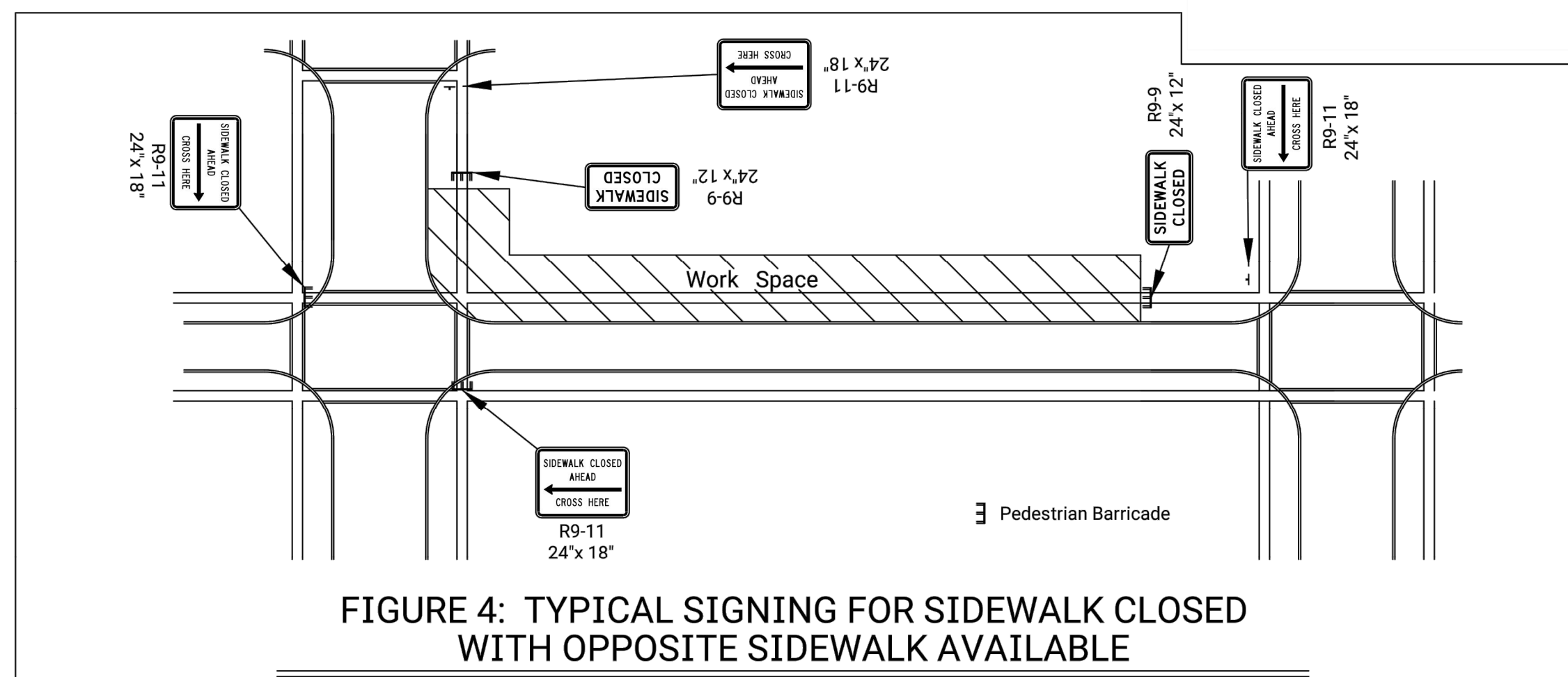
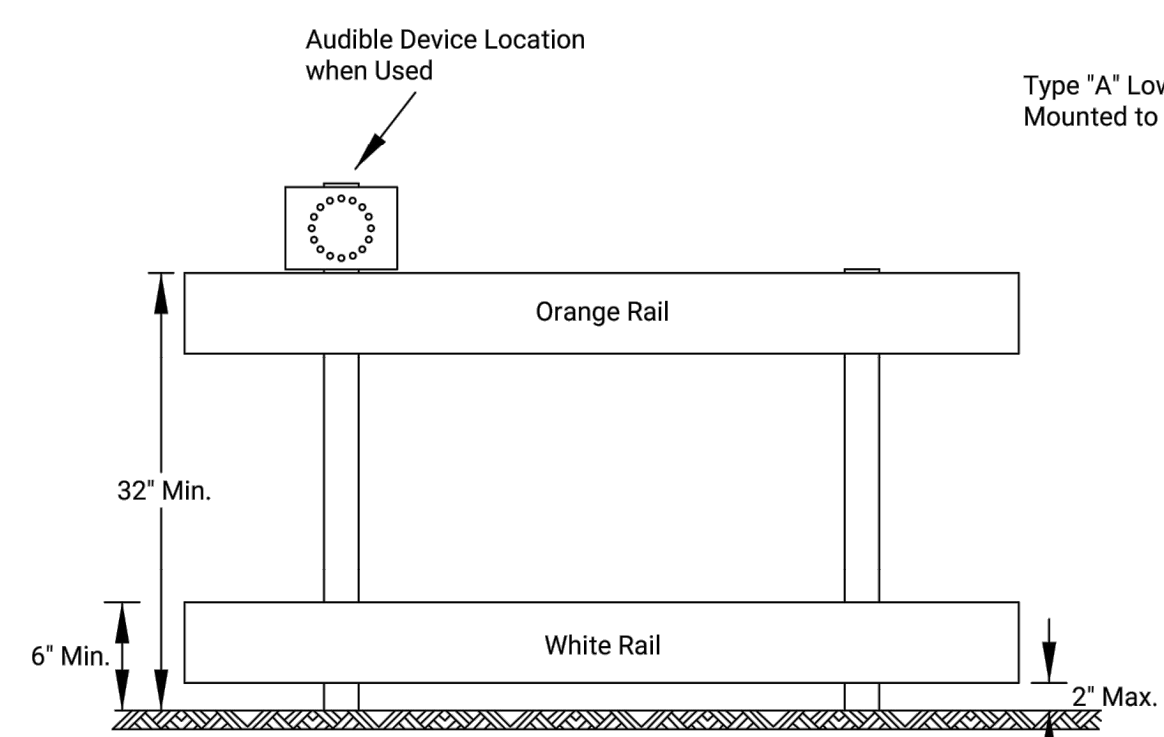
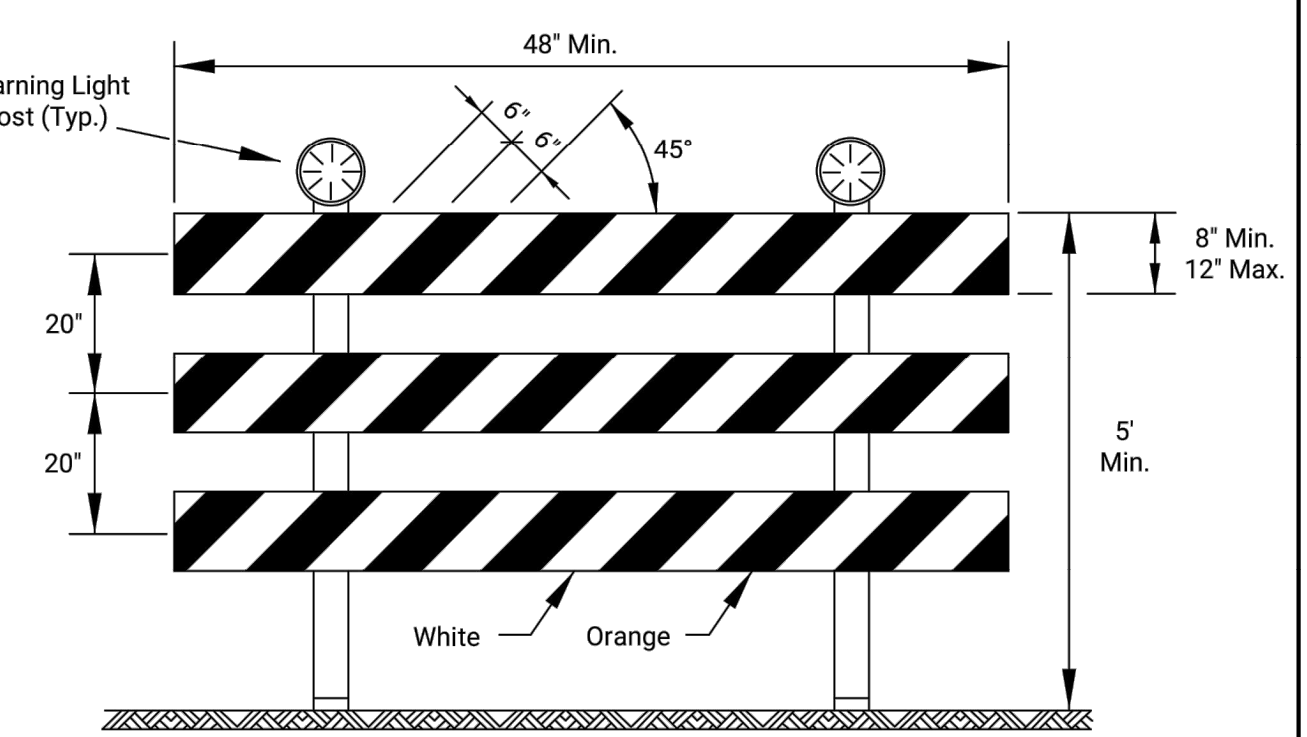


FIGURE 4: TYPICAL SIGNING FOR SIDEWALK CLOSED WITH OPPOSITE SIDEWALK AVAILABLE



DETECTABLE BARRICADE

1. Support device shall not project beyond the detection plate into the pathway.
2. Barricades shall be used to close the entire width of the pathway.
3. Do not use warning lights on pedestrian barricades.
4. Do not use warning lights on audible devices.



TYPE 3 BARRICADE WITH LIGHTS

Approved signs mounted on Type 3 barricades should not cover more than 50% of the top two rails or 33% of the total area of the three rails.

When barricades are placed end-to-end or staggered, a Type "A" low intensity warning light shall be mounted to the vertical post near each outside corner of the end barricades.

ROAD CLOSED GENERAL NOTES

As shown in Figure 1, at the point where thru traffic must detour and local traffic can proceed to the location where the roadway is completely closed, the R11-3a (ROAD CLOSED # MILES AHEAD LOCAL TRAFFIC ONLY) or R11-4 (ROAD CLOSED LOCAL TRAFFIC ONLY or ROAD CLOSED TO THRU TRAFFIC) sign shall be used with Type 3 barricades (winged position), placed on the shoulders of roadway.

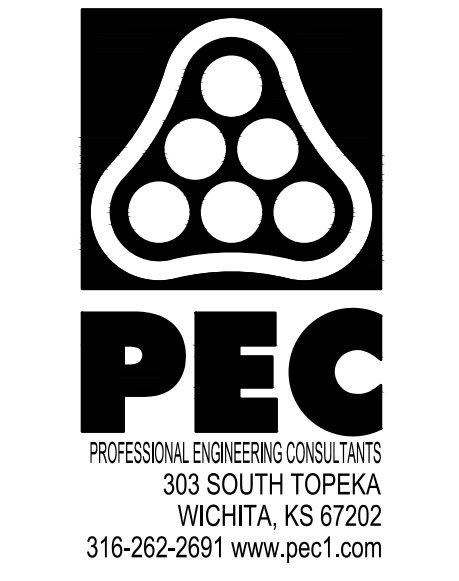
As shown in Figure 3, when local traffic must be allowed access into the work zone, Type 3 barricades shall be longitudinally staggered to maintain the appearance of a closed roadway. A second line of end-to-end Type 3 barricades shall be placed just beyond the last access point in the work zone, to completely close the roadway.

The R11-4 (ROAD CLOSED TO THRU TRAFFIC or ROAD CLOSED LOCAL TRAFFIC ONLY) sign shall be used when the distance to the point of complete closure of the roadway is less than 1 mile.

The R11-3a (ROAD CLOSED # MILES AHEAD LOCAL TRAFFIC ONLY) sign shall be used when the distance to the point of complete closure of the roadway is 1 mile or greater.

The words "BRIDGE OUT" (or BRIDGE CLOSED) may be substituted for the words "ROAD CLOSED" on the R11-3a or R11-4 sign where applicable.

NO.	DATE	REVISIONS	BY	APPD
KANSAS DEPARTMENT OF TRANSPORTATION				
<b>TRAFFIC CONTROL CLOSURES</b>				
TE704				
FHWA APPROVAL	06-01-15	APPD	Kristina Erickson	
DESIGNED	B.A.H.	DETAILED	R.W.B.	QUANTITIES
DESIGN CK	DETAIL CK	QUAN CK	TRACE	CK
KDOT Graphics Certified 05-24-2022 Sh. No. 0				



**WATERLINE IMPROVEMENTS**  
**CROSS CONNECTION AT**  
**31ST STREET S AND OLIVER STREET**

PAUL GUNZELMAN, P.E. - CITY ENGINEER  
 CITY OF WICHITA ENGINEERING PROJECT NO. 448-2023-038022

Issue:	
JOB NO.	035-220496-000-0042
DATE	OCTOBER 2022
PM	TBK
DESIGNED BY	AMD
DRAWN BY	CSL
CHECKED BY	XXX

TRAFFIC CONTROL CLOSURES TE704

CT503