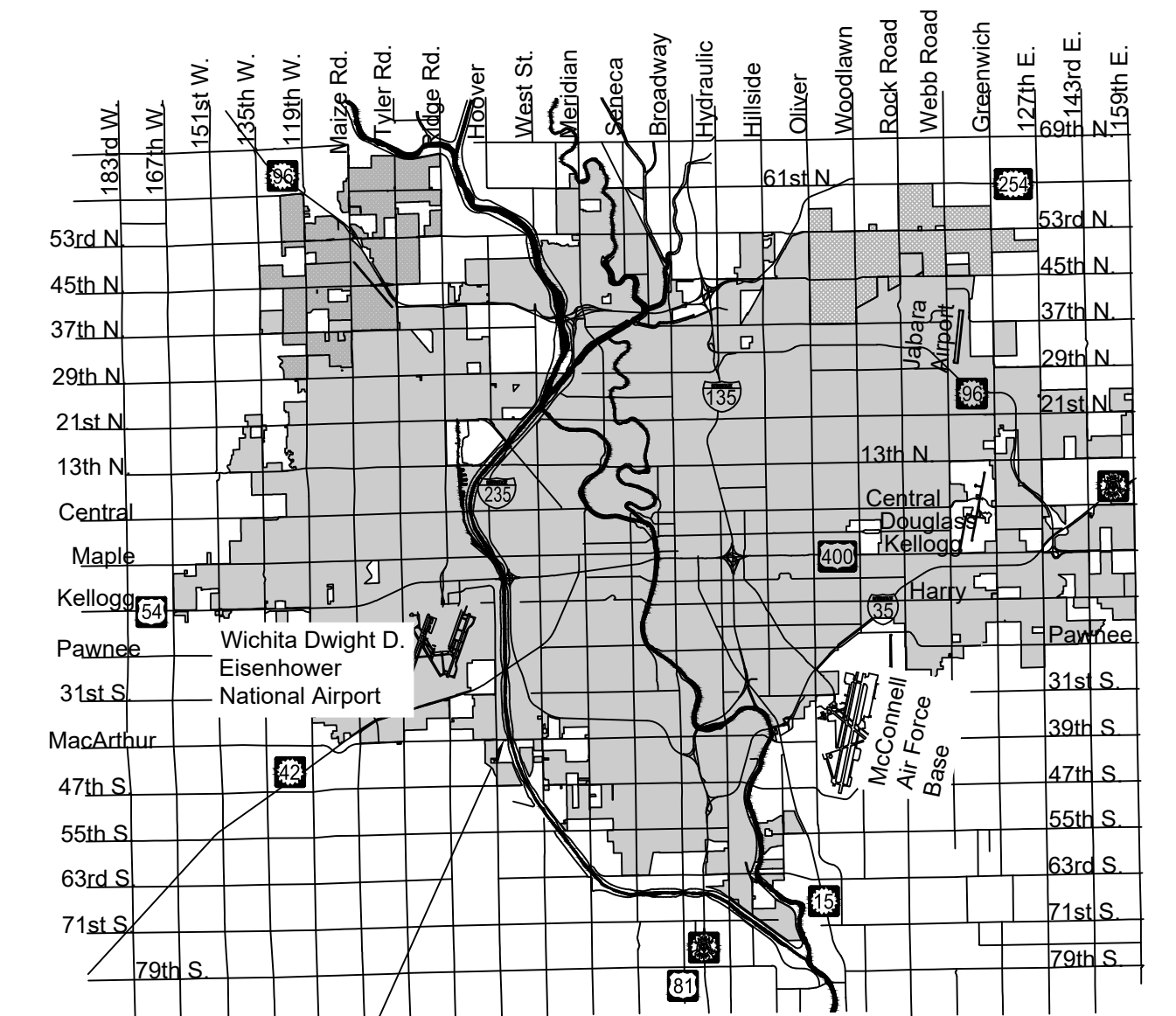
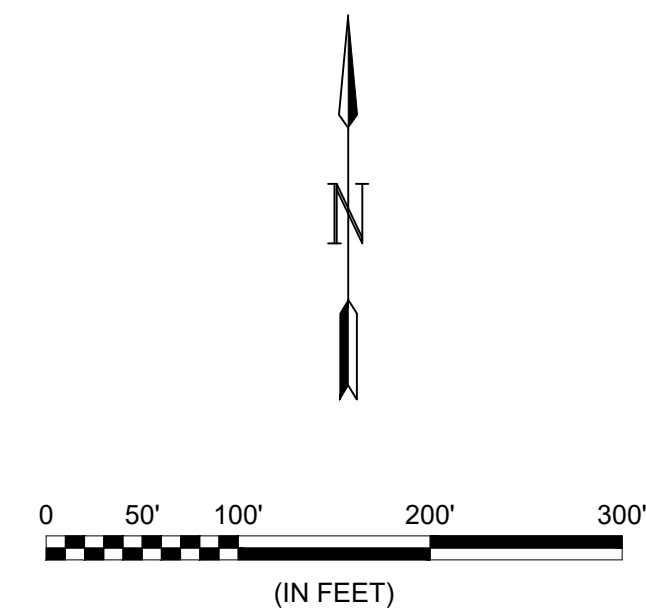


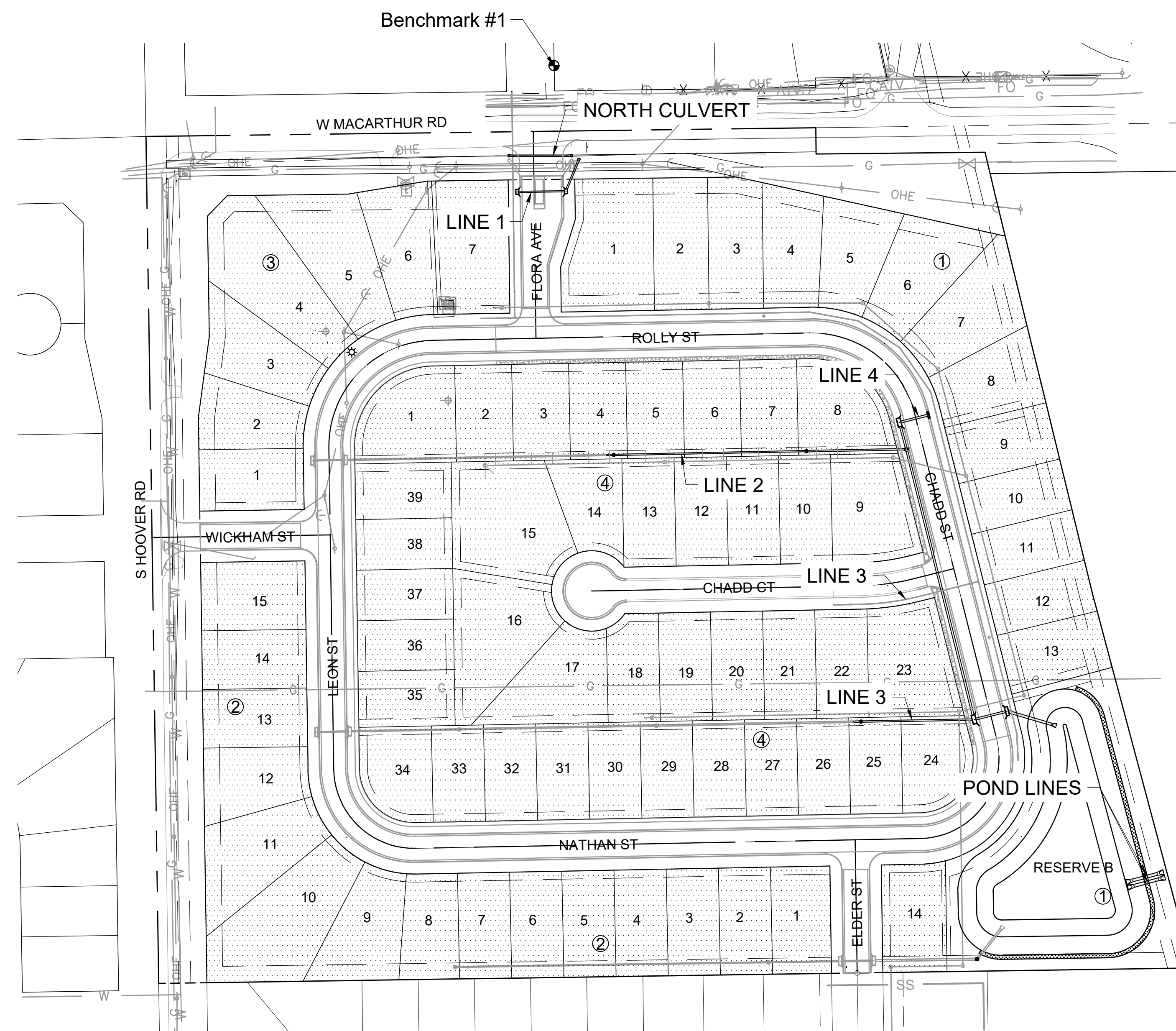
# STORM WATER DRAIN #521 to serve Cottonwood Creek Estates CITY OF WICHITA, KANSAS

Paul Gunzelman, P.E. City Engineer  
Project Number: 458-2023-085563  
Org Code Number: 47313424  
Munis Number: E4032



PROJECT LOCATION  
Vicinity Map

Sheet List Table	
Sheet Number	Sheet Title
1	TITLESHEET
2	GENERAL NOTES
3	SEEDING NOTES
4	SWS LINE 1A & DITCH GRADING
5	SWS LINE 2 (1 OF 2)
6	SWS LINE 2 (2 OF 2)
7	SWS LINE 3
8	SWS LINE 4
9	POND SWS LINES
10	PRE-CAST SWS MH
11	MH FRAME & COVER
12	STANDARD TYPE 1A CURB INLET 5-10
13	BACKYARD INLET
14	GRATED DRIVEWAY INLET (DOUBLE)
15	MASS GRADING PLAN
16	NORTH DITCH GRADING
17	SOUTH GRADING (1 OF 2)
18	SOUTH GRADING (2 OF 2)
19	NORTH GRADING (BLOCK 4) (1 OF 2)
20	NORTH GRADING (BLOCK 4) (2 OF 2)
21	SOUTH GRADING (BLOCK 4) (1 OF 2)
22	SOUTH GRADING (BLOCK 4) (2 OF 2)
23	NORTH TO SOUTH (BLOCK 4)
24	POND DETAILS
25	COORDINATE MAP
26	COMPACTION FILL TABLE
27	EROSION CONTROL
28	BACK OF CURB DETAILS
29	SILT FENCE DETAILS
30	STRAW BALE DETAILS
31	STREET IMPROVEMENT PROJECTS
32	SUBDIVISION DEVELOPMENT PROCESS
33	FINAL PLAT



Stormwater Certification:  
 New Development  Redevelopment (Circle One)  
 Stormwater Permit # \_\_\_\_\_  
 NOI Permit # S-AR94-1897

These construction plans were prepared in accordance with the current Stormwater Management Regulations as set forth in the City of Wichita's Stormwater Management Ordinance 16.32 and the policies/guidelines presented in the Wichita/Sedgwick County Stormwater Manual.

Site Area (Acres) = 27.88 Acres  
 Disturbed Area (Acres) = 27.88 Acres  
 Water Quality Treatment: Offsite BMP Program  
 Downstream Channel Protection: N/A  
 Detention: Proposed Pond  
 The BMP used for this development is Silt fence, Curb, Drop inlet protection and curb inlet protection.

EARTHWORK QUANTITIES	
Description	Cu. Yds.
Cut	36376
Fill	43987
Contractor Provided Borrow	7611

DEVELOPER'S CONTACT INFORMATION  
 Timothy M. Chadd  
 TCDC Adventures, LLC  
 teamchadd@att.net  
 316-243-6921



AUG 2024

PLANS PREPARED BY



NOTE: All coordinates listed are modified NAD83 Kansas State Plane Zone South unless otherwise noted. To convert listed coordinates to NAD83 Kansas State Plane Zone South coordinates multiply the northing and easting by the project scale factor of 0.99984395. Elevation datum is NAVD88 Geoid 12B unless otherwise noted.

IMPROVEMENT DISTRICT

**Benchmarks**  
 BENCHMARK #1: CHISELED SQUARE WITH DIVIOT ON THE TOP OF CURB AT NORTHEAST CORNER OF HAMMERHEAD OF FLORA ST, 82 FEET NORTH OF THE CENTERLINE OF MACARTHUR RD, ELEVATION = 1303.72 (NAVD88, G18)

BENCHMARK #2: CHISELED SQUARE WITH DIVIOT ON THE TOP OF THE SOUTH CURB OF GEORGIA ST, 55 FEET WEST OF THE CENTERLINE OF HOOVER RD, ELEVATION = 1316.89 (NAVD88, G18)