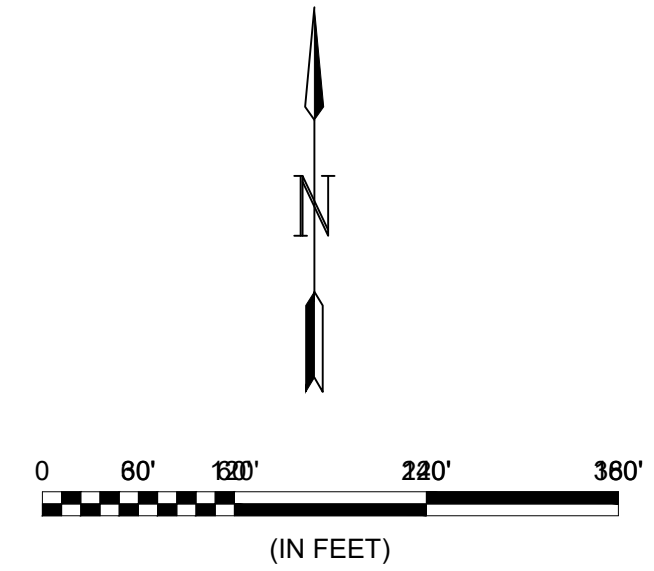




© 2024 GARVER, LLC
 THIS DOCUMENT, ALONG WITH THE IDEAS AND DESIGNS CONVEYED HEREIN, SHALL BE CONSIDERED INSTRUMENTS OF PROFESSIONAL SERVICE AND ARE PROPERTY OF GARVER, LLC. ANY USE, REPRODUCTION, OR DISTRIBUTION OF THIS DOCUMENT, ALONG WITH THE IDEAS AND DESIGN CONTAINED HEREIN, IS PROHIBITED UNLESS AUTHORIZED IN WRITING BY GARVER, LLC OR EXPLICITLY ALLOWED IN THE GOVERNING PROFESSIONAL SERVICES AGREEMENT FOR THIS WORK.

1995 Midfield Road
 Wichita, KS 67209
 (316) 264-8008

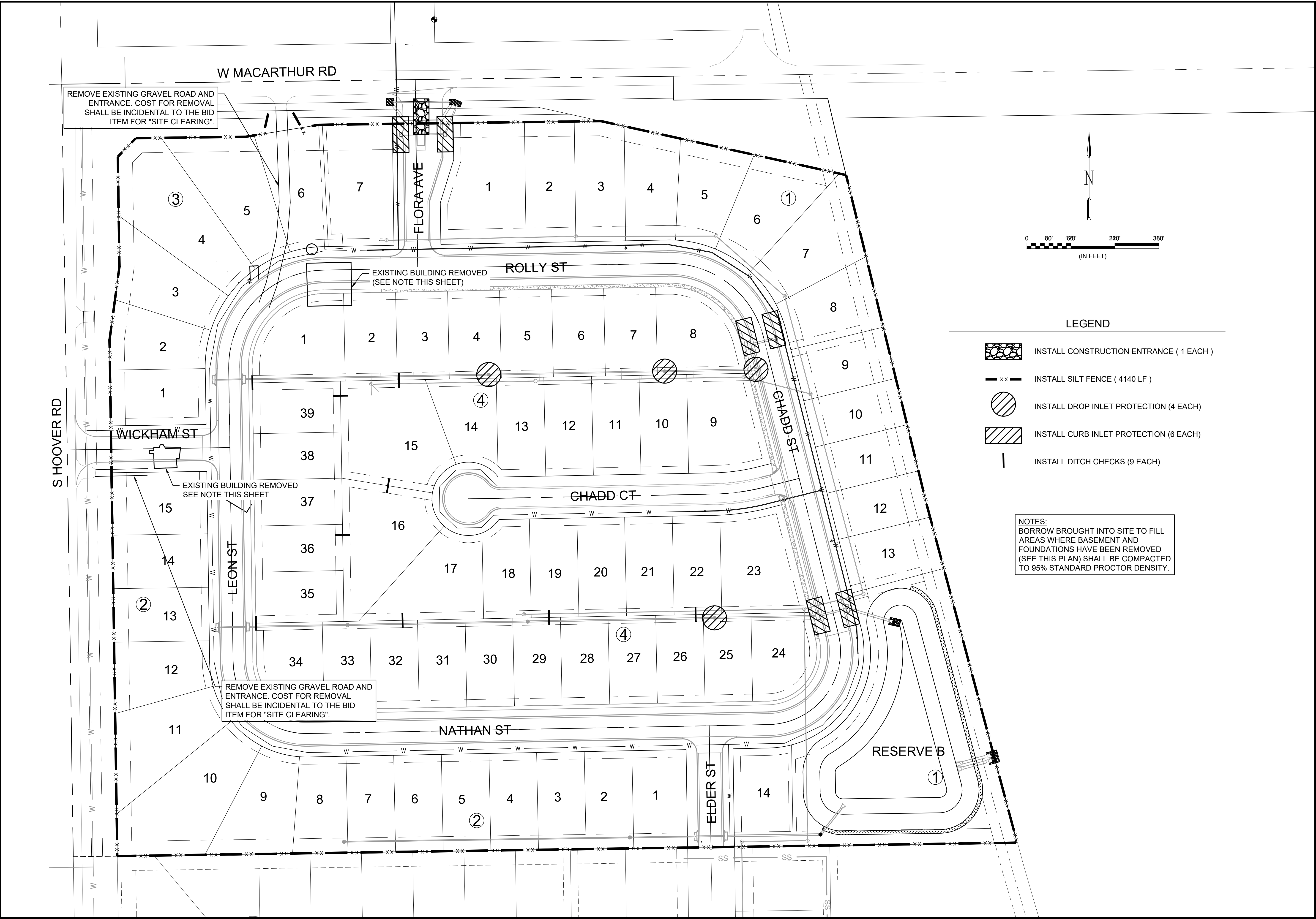


LEGEND

- INSTALL CONSTRUCTION ENTRANCE (1 EACH)
- INSTALL SILT FENCE (4140 LF)
- INSTALL DROP INLET PROTECTION (4 EACH)
- INSTALL CURB INLET PROTECTION (6 EACH)
- INSTALL DITCH CHECKS (9 EACH)

NOTES:
 BORROW BROUGHT INTO SITE TO FILL AREAS WHERE BASEMENT AND FOUNDATIONS HAVE BEEN REMOVED (SEE THIS PLAN) SHALL BE COMPACTED TO 95% STANDARD PROCTOR DENSITY.

File: L:\2023\141-2300792_1 - Cottonwood Creek Phase 1 Drawings\ SWD SHEETS\EROSION CONTROL PLAN.dwg, Last Save: 8/7/2024 10:57 AM, Last saved by: MCARRERAPIEDRA
 Last plotted by: Carrera-Piedra, Mairala Plot Style: 1-2, 5849 Plot Date: 8/7/2024 12:16 PM Plotter used: None



REV.	DATE	DESCRIPTION	BY

CITY OF WICHITA
 WICHITA, KANSAS
 COTTONWOOD CREEK
 ESTATES
 STORM WATER DRAIN

EROSION CONTROL

JOB NO.: 2300792
 DATE: AUG 2024
 DESIGNED BY: .
 DRAWN BY: .

BAR IS ONE INCH ON ORIGINAL DRAWING
 IF NOT ONE INCH ON THIS SHEET, ADJUST SCALES ACCORDINGLY.

DRAWING NUMBER

SHEET NUMBER **27** OF **33**