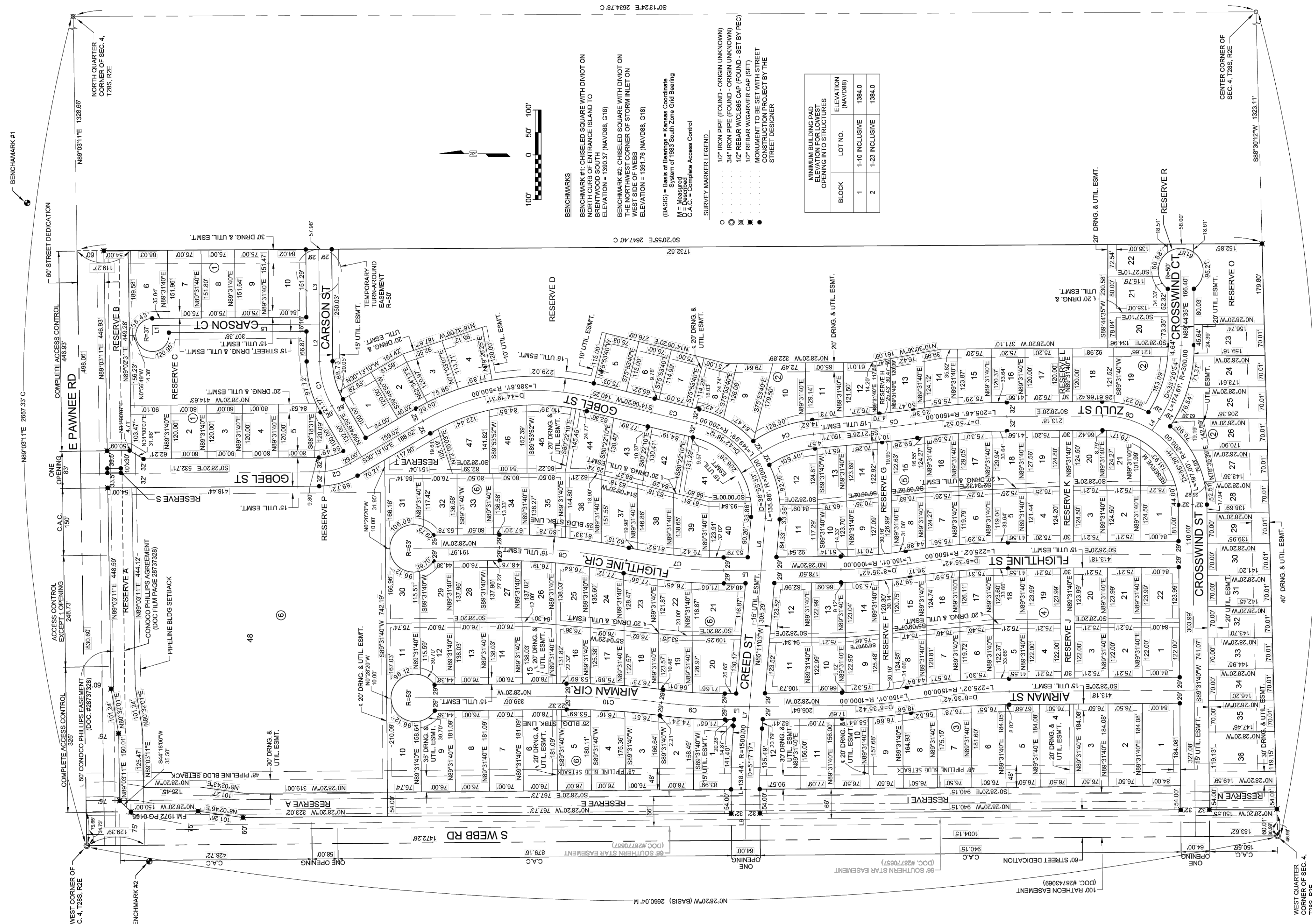


Final Plat

PEGASUS ADDITION

Wichita, Sedgwick County, Kansas



BENCHMARKS
 BENCHMARK #1: CHISELED SQUARE WITH DIVIOT ON NORTH CORNER OF CHURCH ISLAND TO BRENTWOOD SOUTH. ELEVATION = 1390.37 (NAVD88, G18)
 BENCHMARK #2: CHISELED SQUARE WITH DIVIOT ON THE NORTHWEST CORNER OF STORM INLET ON WEST SIDE OF WEBB. ELEVATION = 1391.76 (NAVD88, G18)

(BASIS) = Basis of Bearings = Kansas Coordinate System of 1983 South Zone Grid Bearing
 M = Measured
 C.A.C. = Complete Access Control
 SURVEY/MARKER LEGEND:
 ○ 1/2" IRON PIPE (FOUND - ORIGIN UNKNOWN)
 ⊗ 3/4" IRON PIPE (FOUND - ORIGIN UNKNOWN)
 ⊙ 1/2" REBAR W/CL565 CAP (FOUND - SET BY PEC)
 ⊙ 1/2" REBAR W/GARVER CAP (SET MONUMENT TO BE SET WITH STREET CONSTRUCTION PROJECT BY THE STREET DESIGNER)

BLOCK	LOT NO.	ELEVATION (NAVD88)
1	1-10 INCLUSIVE	1384.0
2	1-23 INCLUSIVE	1384.0



GARVER
 1995 MIDFIELD RD.
 WICHITA, KS 67209
 (316) 264-8008
 www.GarverUSA.com

DWG FILE: 21141376 SURVEY BASE
 PROJECT NO. 21141376
 JANUARY 29, 2024

FOR INFORMATION ONLY