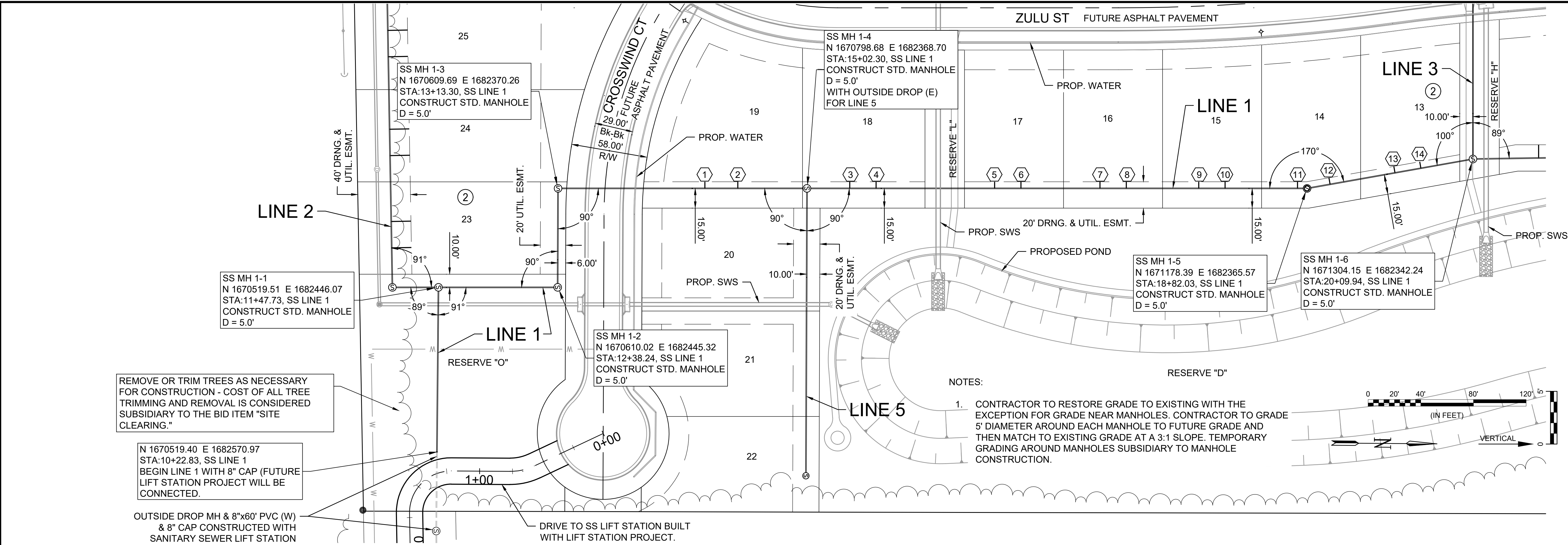
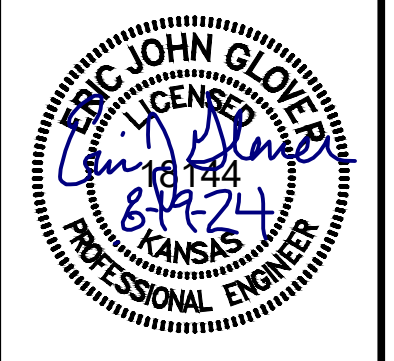




© 2024 GARVER, LLC
 THIS DOCUMENT, ALONG WITH THE IDEAS AND DESIGNS CONVEYED HEREIN, SHALL BE CONSIDERED INSTRUMENTS OF PROFESSIONAL SERVICE AND ARE PROPERTY OF GARVER, LLC. ANY USE, REPRODUCTION, OR DISTRIBUTION OF THIS DOCUMENT, ALONG WITH THE IDEAS AND DESIGN CONTAINED HEREIN, IS PROHIBITED UNLESS AUTHORIZED IN WRITING BY GARVER, LLC OR EXPLICITLY ALLOWED IN THE GOVERNING PROFESSIONAL SERVICES AGREEMENT FOR THIS WORK.

1995 Midfield Road
 Wichita, KS 67209
 (316) 264-8008



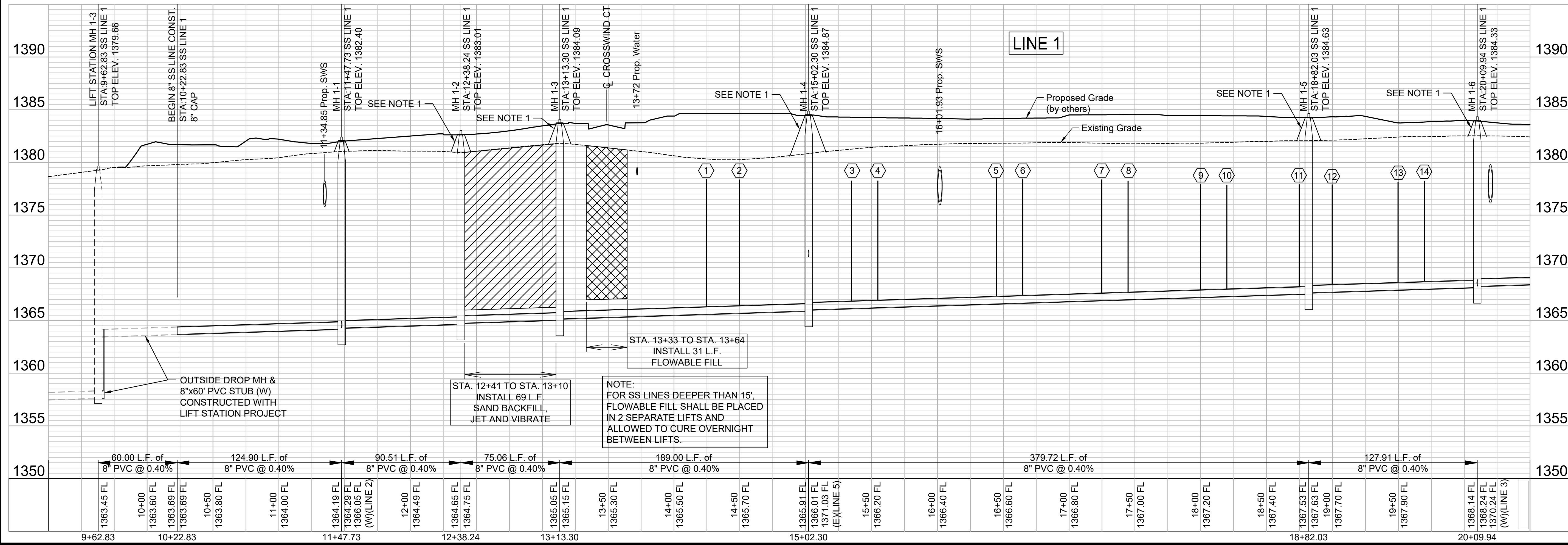
REMOVE OR TRIM TREES AS NECESSARY FOR CONSTRUCTION - COST OF ALL TREE TRIMMING AND REMOVAL IS CONSIDERED SUBSIDIARY TO THE BID ITEM "SITE CLEARING."

N 1670519.40 E 1682570.97
 STA:10+22.83, SS LINE 1
 BEGIN LINE 1 WITH 8" CAP (FUTURE LIFT STATION PROJECT WILL BE CONNECTED).

OUTSIDE DROP MH & 8"x60" PVC (W) & 8" CAP CONSTRUCTED WITH SANITARY SEWER LIFT STATION PROJECT

DRIVE TO SS LIFT STATION BUILT WITH LIFT STATION PROJECT.

NOTES:
 1. CONTRACTOR TO RESTORE GRADE TO EXISTING WITH THE EXCEPTION FOR GRADE NEAR MANHOLES. CONTRACTOR TO GRADE 5' DIAMETER AROUND EACH MANHOLE TO FUTURE GRADE AND THEN MATCH TO EXISTING GRADE AT A 3:1 SLOPE. TEMPORARY GRADING AROUND MANHOLES SUBSIDIARY TO MANHOLE CONSTRUCTION.



File: L:\2024\141-2400521 - Pegasus Addition Design\Drawings\SS INTERNAL SHEETS\SS LINE 1-1.dwg, Last Save: 8/12/2024 3:45 PM, Last saved by: DRS\standrich
 Last plotted by: Standrich, Darryl R., Plot Style: ---, Plot Scale: 1:2,5849, Plot Date: 8/19/2024 8:23 AM, Plotter used: None

REV.	DATE	DESCRIPTION



CITY OF WICHITA
 WICHITA, KANSAS
 PEGASUS ADDITION
 SANITARY SEWER

SS LINE 1
 (1 of 4)

JOB NO.: 2400521
 DATE: AUGUST 2024
 DESIGNED BY: EJG
 DRAWN BY: DRS

BAR IS ONE INCH ON ORIGINAL DRAWING
 IF NOT ONE INCH ON THIS SHEET, ADJUST SCALES ACCORDINGLY.

DRAWING NUMBER
 SHEET NUMBER **6** OF **36**