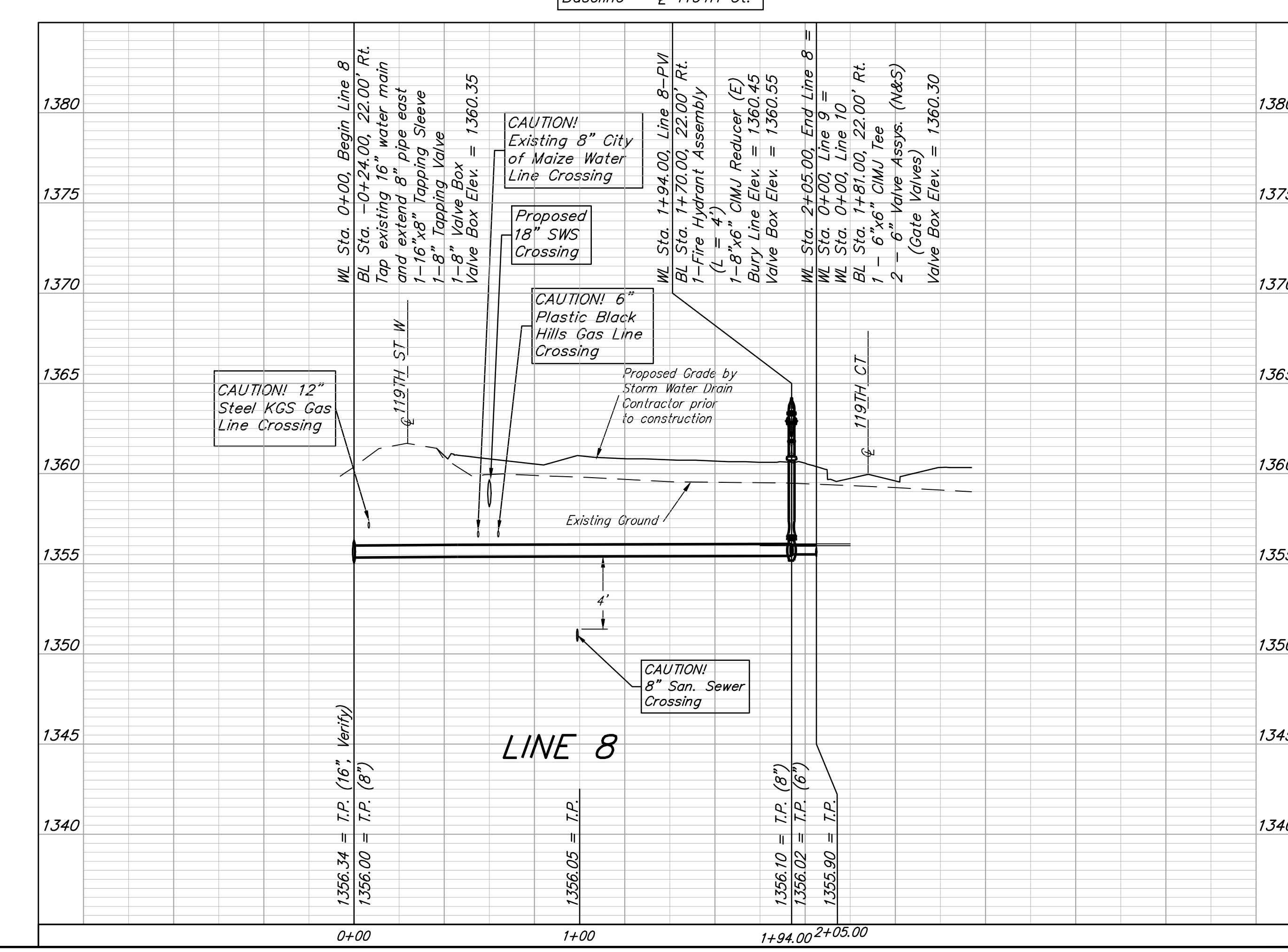
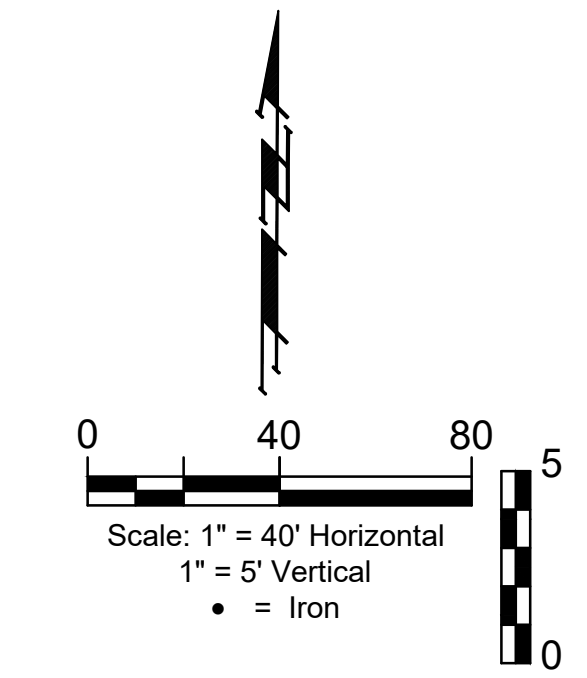
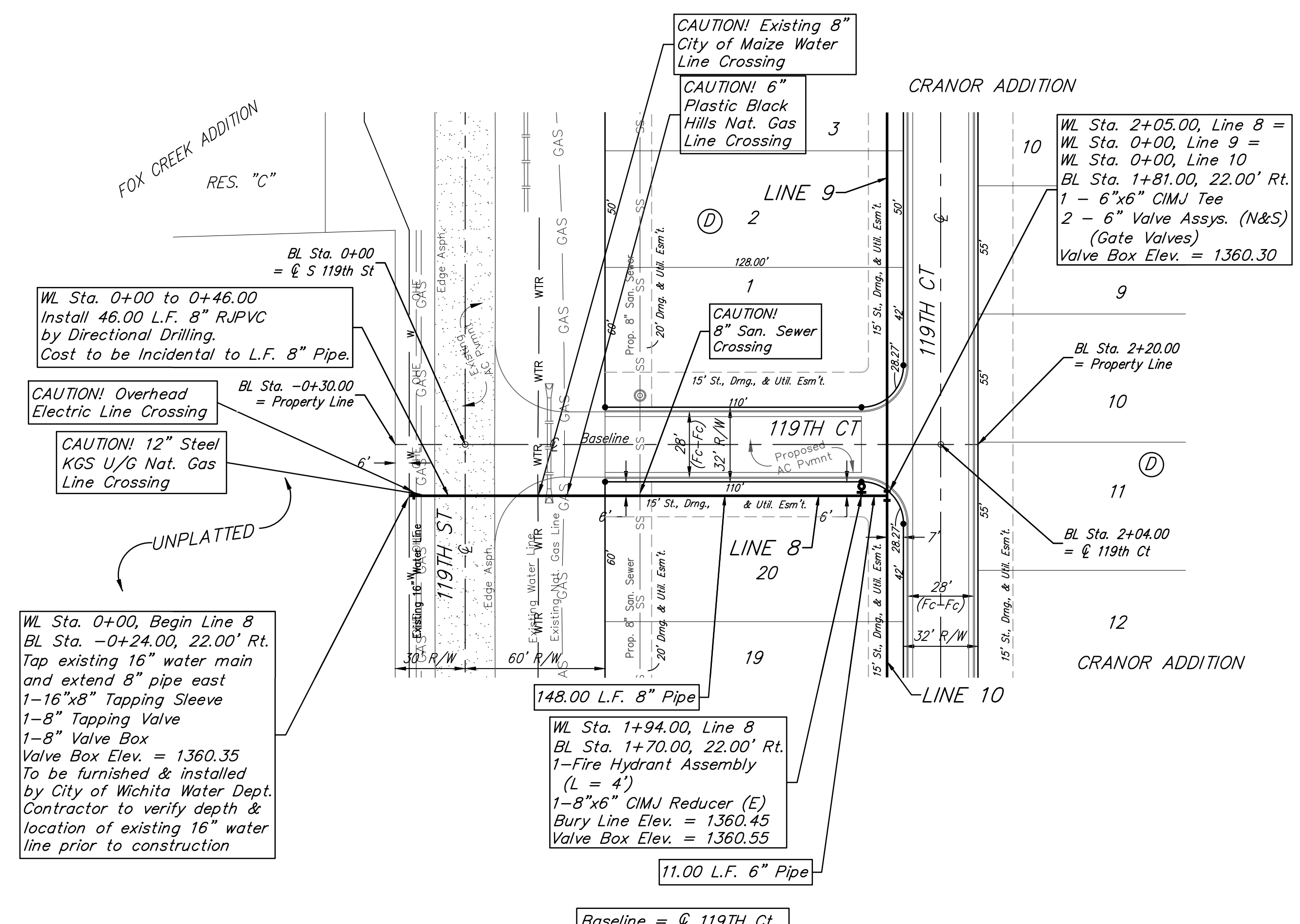


BENCHMARKS:
 Square cut top of the south end of the east RCP 114.5'± north and 34.7'± east of the SW Cor., NW1/4, Sec. 31, Twp. 26-S, R-1-W. Elev. = 1358.12 NAVD88

"+" cut top of the east end of RCBC, 589.6'± north and 24.6'± east of the SW Cor., NW1/4, Sec. 31, Twp. 26-S, R-1-W. Elev. = 1359.71 NAVD88

Contractor shall contact Adam Knolla with Kansas Gas Service (316-832-3123) before construction to arrange and coordinate with the KGS construction group.

Contractor shall contact Jesse Lunsford with Black Hills Energy (620-218-1524) before construction to arrange and coordinate with Black Hills Energy.



BAUGHMAN COMPANY

315 Ellis St.
 Wichita, KS 67211
 316-262-7271
 BaughmanCo.com

CRANOR ADDITION
 PHASE I

LINE 8

WATER DISTRIBUTION SYSTEM

PROJECT NUMBER:

DESIGN: DMV DRAWN: JAK
 DATE: Sep. 12, 2024

SHEET **14** OF **28**

File: E:\Projects\Cranor Addition\Kelsey 119th\22-04-P768\Engineering\Phase 1\WTR_23-03-E466.dwg