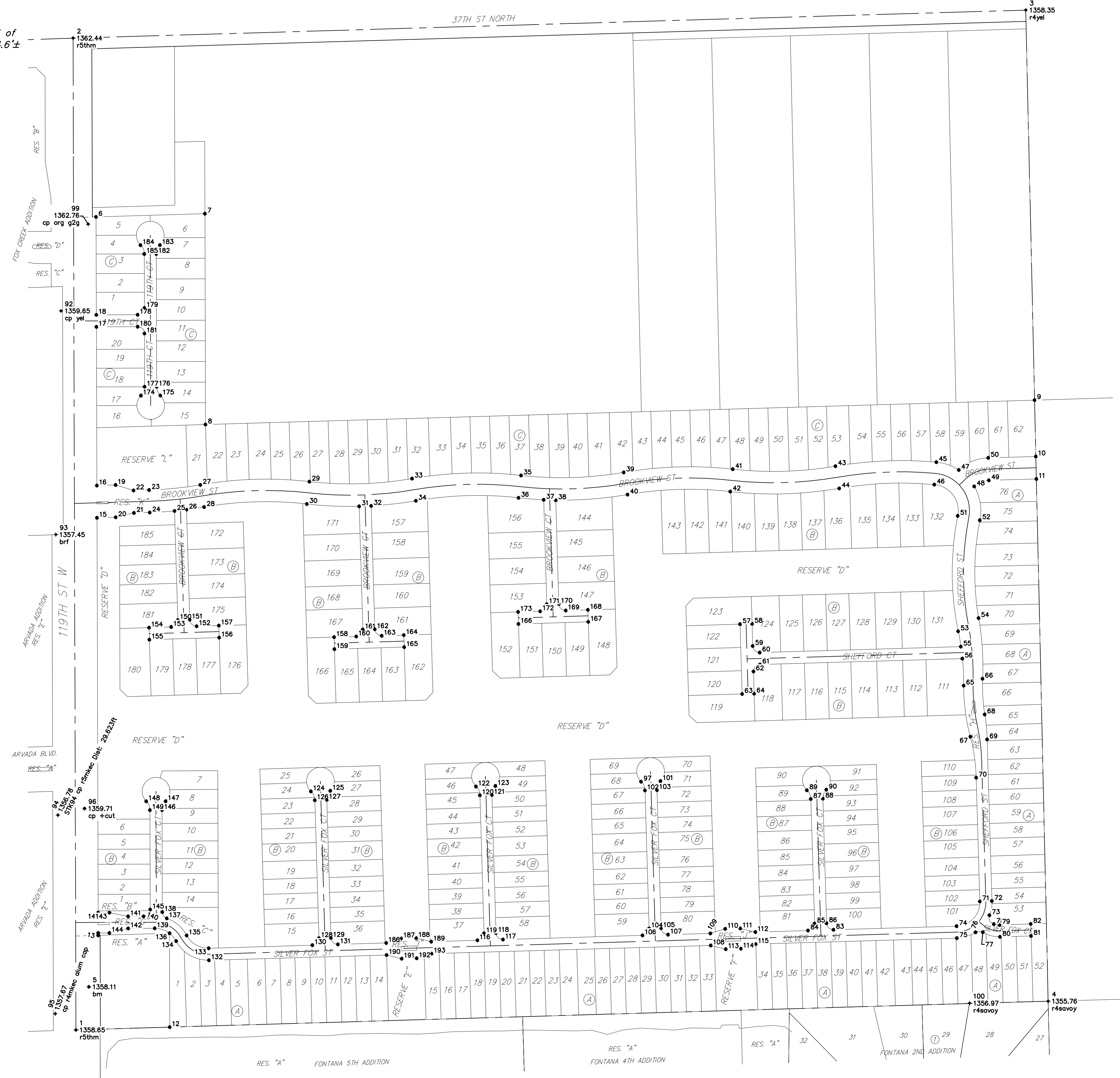
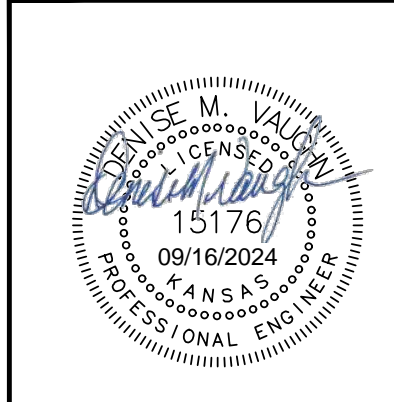
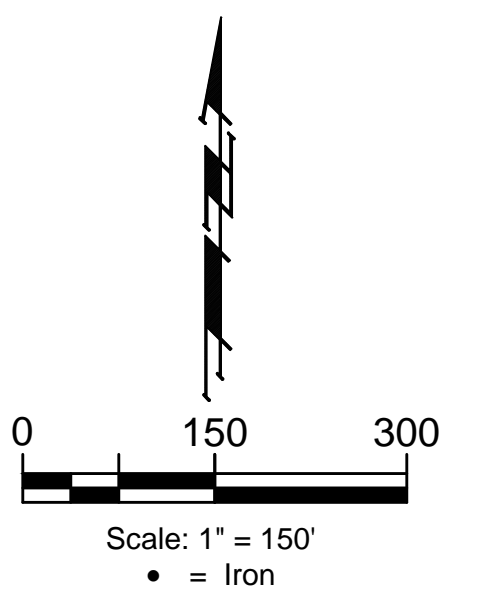


BENCHMARKS:
 Square cut top of the south end of the east RCP 114.5'± north and 34.7'± east of the SW Cor., NW1/4, Sec. 31, Twp. 26-S, R-1-W. Elev. = 1358.12 NAVD88

"4" cut top of the east end of RCBC, 589.6'± north and 24.6'± east of the SW Cor., NW1/4, Sec. 31, Twp. 26-S, R-1-W. Elev. = 1359.71 NAVD88



IRONS			IRONS			IRONS		
Point #	Northing	Easting	Point #	Northing	Easting	Point #	Northing	Easting
1	1,706,288.86	1,607,000.26	76	1,706,548.81	1,609,396.95	152	1,707,364.28	1,607,322.05
2	1,708,931.12	1,606,992.58	77	1,706,549.02	1,609,416.27	153	1,707,362.28	1,607,254.08
3	1,709,005.74	1,609,530.78	78	1,706,570.59	1,609,445.83	154	1,707,360.55	1,607,195.10
4	1,706,365.40	1,609,590.45	79	1,706,568.67	1,609,461.18	155	1,707,328.56	1,607,196.04
5	1,706,403.51	1,607,034.58	80	1,706,536.68	1,609,462.12	156	1,707,334.03	1,607,381.96
6	1,708,454.88	1,607,053.96	81	1,706,539.13	1,609,544.89	157	1,707,366.01	1,607,381.02
7	1,708,463.41	1,607,343.82	82	1,706,571.12	1,609,544.17	158	1,707,335.25	1,607,688.06
8	1,707,901.76	1,607,345.45	83	1,706,555.59	1,609,018.59	159	1,707,303.26	1,607,689.00
9	1,707,966.70	1,609,554.26	84	1,706,553.58	1,608,950.62	160	1,707,336.98	1,607,747.03
10	1,707,816.73	1,609,557.65	85	1,706,572.11	1,608,968.08	161	1,707,355.50	1,607,764.49
11	1,707,756.75	1,609,559.01	86	1,706,573.05	1,609,000.06	162	1,707,356.44	1,607,796.48
12	1,706,296.25	1,607,250.15	87	1,706,903.97	1,608,958.27	163	1,707,338.98	1,607,815.00
13	1,706,547.05	1,607,059.51	88	1,706,904.92	1,608,990.26	164	1,707,340.71	1,607,873.98
14	1,706,601.05	1,607,059.35	89	1,706,927.24	1,608,947.68	165	1,707,308.73	1,607,874.92
15	1,707,653.15	1,607,056.29	90	1,706,928.77	1,608,999.46	166	1,707,370.47	1,608,179.25
16	1,707,739.18	1,607,056.04	92	1,708,204.51	1,606,960.38	167	1,707,375.94	1,608,365.17
17	1,708,161.88	1,607,054.82	93	1,707,608.33	1,606,946.58	168	1,707,407.92	1,608,364.21
18	1,708,193.88	1,607,054.72	94	1,706,860.90	1,606,952.05	169	1,707,406.19	1,608,305.24
19	1,707,740.65	1,607,106.02	95	1,706,331.87	1,606,945.20	170	1,707,423.65	1,608,286.72
20	1,707,654.62	1,607,106.26	96	1,706,878.59	1,607,023.10	171	1,707,422.71	1,608,254.73
21	1,707,666.06	1,607,154.94	97	1,706,950.19	1,608,505.81	172	1,707,404.19	1,608,237.27
22	1,707,726.05	1,607,153.83	98	1,705,509.39	1,607,037.27	173	1,707,402.46	1,608,178.29
23	1,707,727.27	1,607,195.21	99	1,708,435.23	1,607,032.72	174	1,707,978.82	1,607,173.45
24	1,707,667.29	1,607,196.98	100	1,706,359.97	1,608,381.03	175	1,707,978.97	1,607,225.25
25	1,707,671.36	1,607,263.00	101	1,706,951.72	1,608,557.59	176	1,708,002.51	1,607,215.28
26	1,707,674.86	1,607,294.91	102	1,706,926.93	1,608,516.40	177	1,708,002.41	1,607,183.28
27	1,707,740.99	1,607,331.71	103	1,706,927.88	1,608,548.39	178	1,708,194.20	1,607,164.72
28	1,707,681.86	1,607,341.91	104	1,706,559.08	1,608,527.27	179	1,708,212.25	1,607,182.67
29	1,707,749.53	1,607,622.18	105	1,706,560.03	1,608,559.26	180	1,708,162.20	1,607,164.81
30	1,707,689.90	1,607,615.46	106	1,706,540.56	1,608,509.81	181	1,708,144.25	1,607,182.87
31	1,707,683.71	1,607,754.85	107	1,706,542.57	1,608,577.78	182	1,708,356.19	1,607,214.25
32	1,707,684.96	1,607,786.82	108	1,706,513.91	1,608,691.48	183	1,708,379.78	1,607,224.08
33	1,707,757.57	1,607,895.73	109	1,706,545.90	1,608,690.54	184	1,708,379.63	1,607,172.28
34	1,707,698.44	1,607,905.94	110	1,706,558.07	1,608,730.20	185	1,708,356.09	1,607,182.25
35	1,707,766.11	1,608,186.21	111	1,706,559.26	1,608,770.18	186	1,706,520.38	1,607,826.92
36	1,707,706.48	1,608,179.49	112	1,706,549.44	1,608,810.49	187	1,706,532.56	1,607,866.57
37	1,707,701.14	1,608,246.55	113	1,706,504.10	1,608,731.79	188	1,706,533.74	1,607,906.56
38	1,707,700.14	1,608,278.59	114	1,706,505.28	1,608,771.77	189	1,706,523.92	1,607,946.86
39	1,707,774.15	1,608,459.76	115	1,706,517.46	1,608,811.43	190	1,706,488.39	1,607,827.86
40	1,707,715.02	1,608,469.96	116	1,706,527.56	1,608,070.00	191	1,706,478.58	1,607,868.17
41	1,707,782.69	1,608,750.23	117	1,706,529.57	1,608,137.97	192	1,706,479.76	1,607,908.15
42	1,707,723.07	1,608,743.52	118	1,706,547.03	1,608,119.45	193	1,706,491.94	1,607,947.81
43	1,707,790.73	1,609,023.78	119	1,706,546.09	1,608,087.46			
44	1,707,731.61	1,609,033.99	120	1,706,913.94	1,608,076.59			
45	1,707,801.47	1,609,292.68	121	1,706,914.88	1,608,108.58			
46	1,707,741.72	1,609,287.22	122	1,706,937.20	1,608,066.00			
47	1,707,780.56	1,609,352.38	123	1,706,938.73	1,608,117.78			
48	1,707,736.88	1,609,383.51	124	1,706,924.21	1,607,626.19			
49	1,707,753.03	1,609,432.55	125	1,706,925.73	1,607,677.97			
50	1,707,813.00	1,609,430.79	126	1,706,900.94	1,607,636.78			
51	1,707,658.46	1,609,349.53	127	1,706,901.89	1,607,668.77			
52	1,707,646.85	1,609,408.39	128	1,706,533.09	1,607,647.65			
53	1,707,350.77	1,609,350.69	129	1,706,534.04	1,607,679.64			
54	1,707,385.98	1,609,405.11	130	1,706,514.57	1,607,630.19			
55	1,707,310.00	1,609,357.84	131	1,706,516.58	1,607,698.16			
56	1,707,278.10	1,609,361.77	132	1,706,474.41	1,607,354.68			
57	1,707,369.74	1,608,769.65	133	1,706,506.40	1,607,353.73			
58	1,707,370.68	1,608,801.63	134	1,706,525.44	1,607,267.00			
59	1,707,311.71	1,608,803.37	135	1,706,540.42	1,607,295.28			
60	1,707,294.24	1,608,821.89	136	1,706,546.25	1,607,249.42			
61	1,707,262.26	1,608,822.83	137	1,706,586.02	1,607,242.36			
62	1,707,243.74	1,608,805.37	138	1,706,602.95	1,607,230.35			
63	1,707,183.82	1,608,775.11	139	1,706,559.49	1,607,210.26			
64	1,707,184.76	1,608,807.10	140	1,706,591.40	1,607,180.38			
65	1,707,206.03	1,609,365.38	141	1,706,591.28	1,607,139.38			
66	1,707,224.49	1,609,415.73	142	1,706,559.28	1,607,139.47			
67	1,707,069.89	1,609,383.01	143	1,706,601.13	1,607,089.35			
68	1,707,129.30	1,609,421.49	144	1,706,547.13	1,607,089.51			
69	1,707,062.79	1,609,427.79	145	1,706,609.45	1,607,198.33			
70	1,706,960.84	1,609,398.78	146	1,706,874.49	1,607,229.56			
71	1,706,631.14	1,609,408.53	147	1,706,898.09	1,607,239.39			
72	1,706,632.08	1,609,440.51	148	1,706,897.94	1,607,187.59			
73	1,706,594.42	1,609,434.01	149	1,706,874.40	1,607,197.56			
74	1,706,565.28	1,609,346.44	150	1,707,380.80	1,607,271.54			
75	1,706,533.29	1,609,347.39	151	1,707,381.74	1,607,303.52			



BAUGHMAN COMPANY
 315 Ellis St.
 Wichita, KS 67211
 316-262-7271
 BaughmanCo.com

CRANOR ADDITION
 PHASE I

COORDINATES
WATER DISTRIBUTION SYSTEM
PROJECT NUMBER:
DESIGN: DMV DRAWN: JAK
DATE: Sep. 12, 2024
SHEET 23 OF 28

File: E:\Projects\Cranor Addition\Kelsey 119th_22-04-P768\Engineering\Phase 1\WTR_23-03-E466.dwg