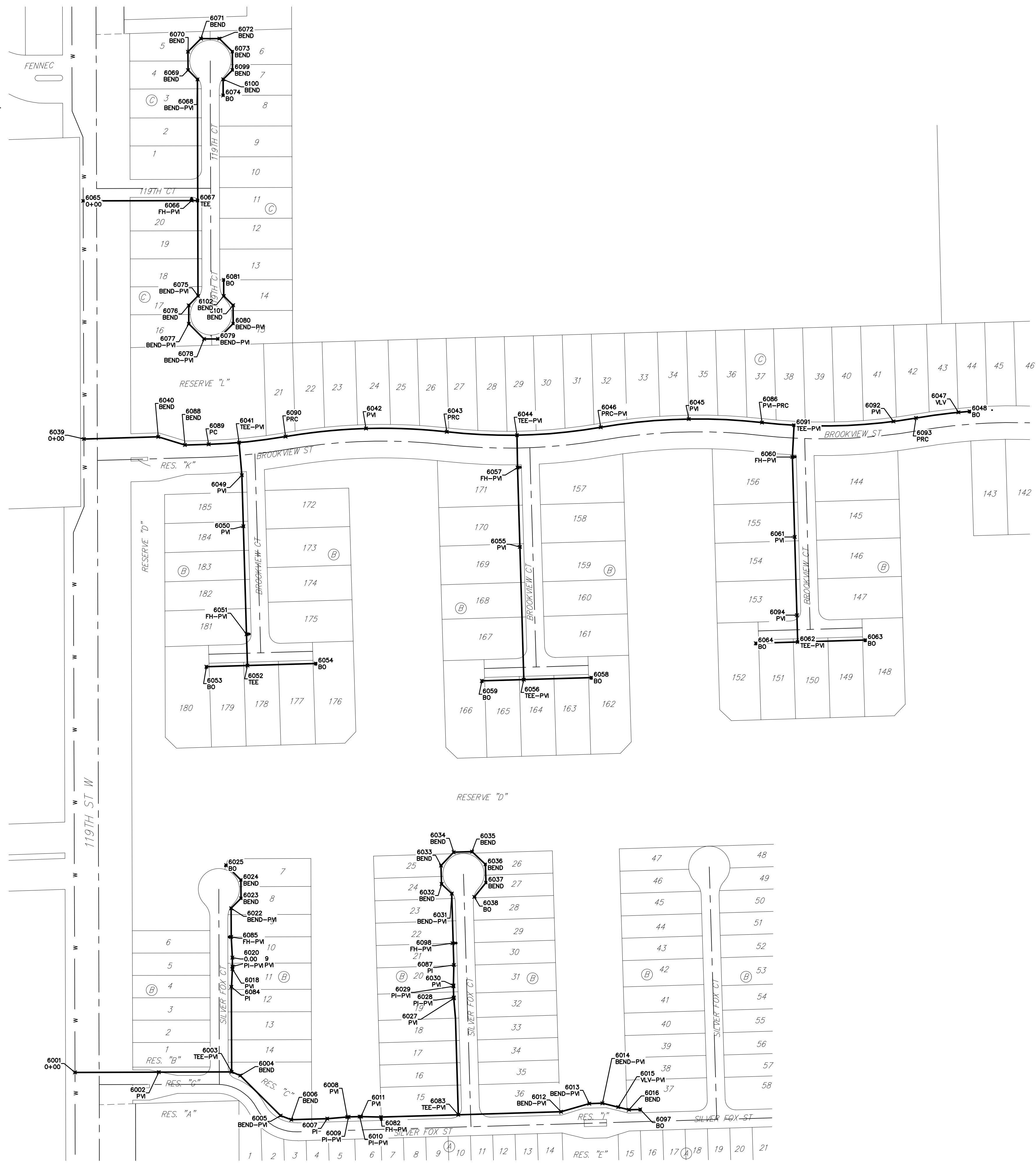
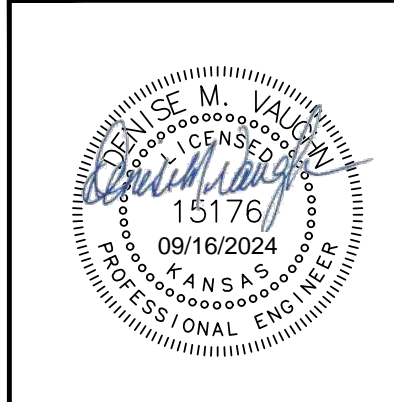
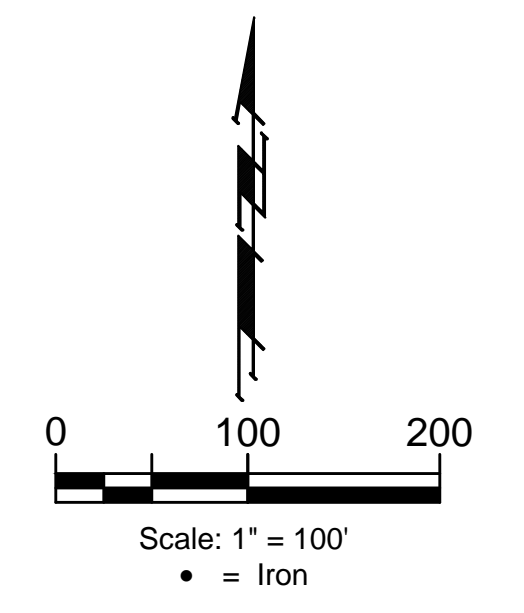


BENCHMARKS:
 Square cut top of the south end of the east RCP 114.5'± north and 34.7'± east of the SW Cor., NW1/4, Sec. 31, Twp. 26-S, R-1-W. Elev. = 1358.12 NAVD88

"+" cut top of the east end of RCBC, 589.6'± north and 24.6'± east of the SW Cor., NW1/4, Sec. 31, Twp. 26-S, R-1-W. Elev. = 1359.71 NAVD88



WATER LINE POINTS				WATER LINE POINTS			
Point #	Northing	Easting	Description	Point #	Northing	Easting	Description
6001	1,706,596.75	1,606,956.06	0+00	6053	1,707,322.42	1,607,191.22	BO
6002	1,706,597.18	1,607,106.06	PVI	6054	1,707,328.18	1,607,387.13	BO
6003	1,706,597.56	1,607,236.36	TEE-PVI	6055	1,707,536.64	1,607,752.17	PVI
6004	1,706,591.20	1,607,251.85	BEND	6056	1,707,299.32	1,607,759.14	TEE-PVI
6005	1,706,519.39	1,607,324.08	BEND-PVI	6057	1,707,678.65	1,607,747.99	FH-PVI
6006	1,706,512.09	1,607,343.28	BEND	6058	1,707,302.88	1,607,880.09	BO
6007	1,706,513.99	1,607,407.46	PI	6059	1,707,297.12	1,607,684.18	BO
6008	1,706,516.93	1,607,443.25	PVI	6060	1,707,697.45	1,608,239.65	FH-PVI
6009	1,706,517.12	1,607,445.54	PI-PVI	6061	1,707,554.55	1,608,243.85	PVI
6010	1,706,517.71	1,607,465.53	PI-PVI	6062	1,707,366.53	1,608,249.38	TEE-PVI
6011	1,706,517.65	1,607,467.93	PVI	6063	1,707,370.09	1,608,370.33	BO
6012	1,706,526.35	1,607,825.93	BEND-PVI	6064	1,707,364.33	1,608,174.41	BO
6013	1,706,540.85	1,607,876.33	BEND-PVI	6065	1,708,155.63	1,606,970.83	0+00
6014	1,706,541.54	1,607,899.86	BEND-PVI	6066	1,708,156.20	1,607,164.83	FH-PVI
6015	1,706,534.68	1,607,928.06	VLV-PVI	6067	1,708,156.23	1,607,175.83	TEE
6016	1,706,529.95	1,607,947.50	BEND	6068	1,708,372.88	1,607,175.20	BEND-PVI
6018	1,706,781.97	1,607,237.83	PVI	6069	1,708,389.56	1,607,158.43	BEND
6019	1,706,786.26	1,607,237.82	PI-PVI	6070	1,708,422.47	1,607,158.33	BEND
6020	1,706,801.97	1,607,237.77	PI-PVI	6071	1,708,445.81	1,607,181.54	BEND
6022	1,706,890.32	1,607,235.51	BEND-PVI	6072	1,708,445.90	1,607,214.45	BEND
6023	1,706,908.10	1,607,253.19	BEND	6073	1,708,422.70	1,607,237.78	BEND
6024	1,706,941.01	1,607,253.09	BEND	6074	1,708,344.36	1,607,221.29	BO
6025	1,706,967.40	1,607,226.54	BO	6075	1,707,985.58	1,607,176.33	BEND-PVI
6027	1,706,729.12	1,607,633.94	PVI	6076	1,707,968.81	1,607,159.65	BEND
6028	1,706,730.72	1,607,633.81	PI-PVI	6077	1,707,935.90	1,607,159.75	BEND-PVI
6029	1,706,750.71	1,607,633.22	PI-PVI	6078	1,707,908.71	1,607,187.10	BEND-PVI
6030	1,706,752.31	1,607,633.26	PVI	6079	1,707,908.78	1,607,212.01	BEND-PVI
6031	1,706,916.57	1,607,630.32	BEND-PVI	6080	1,707,936.13	1,607,239.20	BEND-PVI
6032	1,706,933.76	1,607,612.08	BEND	6081	1,708,014.36	1,607,222.24	BO
6033	1,706,966.66	1,607,611.11	BEND	6082	1,706,516.83	1,607,503.74	FH-PVI
6034	1,706,990.60	1,607,633.68	BEND	6083	1,706,520.92	1,607,642.01	TEE-PVI
6035	1,706,991.58	1,607,666.58	BEND	6084	1,706,749.80	1,607,235.92	PI
6036	1,706,969.00	1,607,690.52	BEND	6085	1,706,838.97	1,607,235.66	FH-PVI
6037	1,706,936.11	1,607,691.50	BEND	6086	1,707,759.15	1,608,185.42	PVI-PVI
6038	1,706,910.64	1,607,670.65	BO	6087	1,706,788.91	1,607,634.09	PI
6039	1,707,729.71	1,606,972.07	0+00	6088	1,707,719.02	1,607,152.89	BEND
6040	1,707,733.62	1,607,105.08	BEND	6089	1,707,720.27	1,607,195.42	PC
6041	1,707,723.38	1,607,249.71	TEE-PVI	6090	1,707,734.09	1,607,332.90	PRC
6042	1,707,748.55	1,607,476.85	PVI	6091	1,707,754.40	1,608,242.69	TEE-PVI
6043	1,707,742.57	1,607,621.40	PRC	6092	1,707,761.16	1,608,420.63	PVI
6044	1,707,736.57	1,607,747.02	TEE-PVI	6093	1,707,767.25	1,608,460.95	PRC
6045	1,707,765.45	1,608,054.44	PVI	6094	1,707,414.61	1,608,247.97	PVI
6046	1,707,750.67	1,607,896.92	PRC-PVI	6097	1,706,530.54	1,607,967.49	BO
6047	1,707,777.46	1,608,536.97	VLV	6098	1,706,827.79	1,607,631.81	FH-PVI
6048	1,707,779.18	1,608,556.89	BO	6099	1,708,389.79	1,607,237.88	BEND
6049	1,707,665.12	1,607,254.68	PVI	6100	1,708,373.01	1,607,221.20	BEND
6050	1,707,573.63	1,607,257.37	PVI	6101	1,707,969.04	1,607,239.10	BEND
6051	1,707,380.55	1,607,263.04	FH-PVI	6102	1,707,985.72	1,607,222.33	BEND
6052	1,707,324.58	1,607,264.69	TEE				



BAUGHMAN COMPANY
 315 Ellis St.
 Wichita, KS 67211
 316-262-7271
 BaughmanCo.com

CRANOR ADDITION
 PHASE I

COORDINATES

WATER DISTRIBUTION SYSTEM
 PROJECT NUMBER:

DESIGN: DMV DRAWN: JAK
 DATE: Sep. 12, 2024

SHEET 24 OF 28

File: E:\Projects\Cranor Addition\Kelsey 119th\22-04-P768\Engineering\Phase 1\WTR_23-03-E466.dwg