

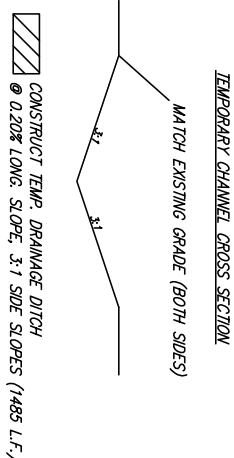
CAUTION! EXISTING AQUILA GAS SERVICE GAS PIPELINE.

GRADE OUT HATCHED AREA AS NECESSARY TO BALANCE EARTH WORK ON PROJECT. SEE NOTE.

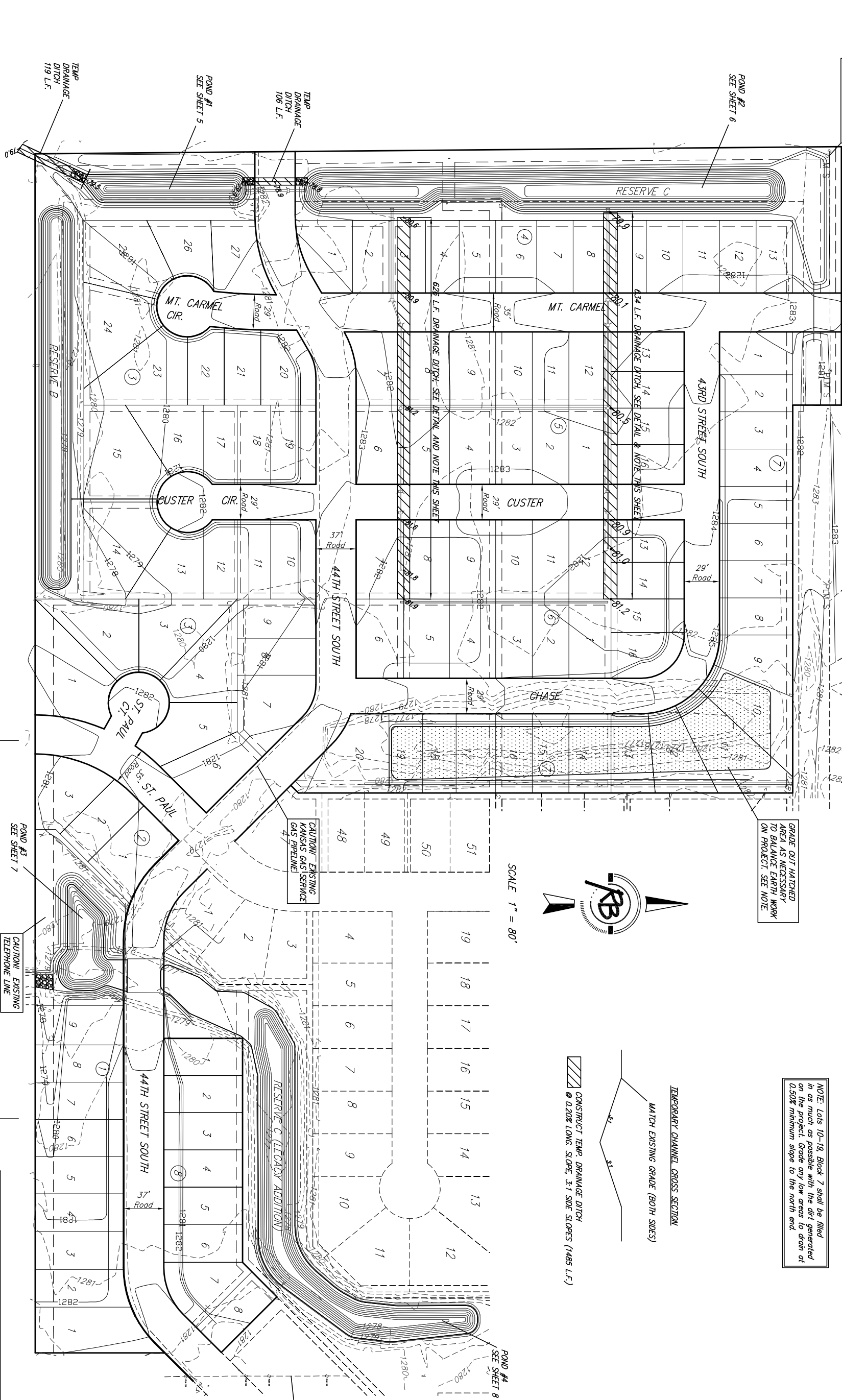
NOTE: Lots 10-19, Block 7 shall be filled in as much as possible with the dirt generated on the project. Grade any low areas to drain at 0.50% minimum slope to the north end.



SCALE 1" = 80'



CONSTRUCT TEMP. DRAINAGE DITCH @ 0.20% LONG. SLOPE, 3:1 SIDE SLOPES (1485 L.F.)

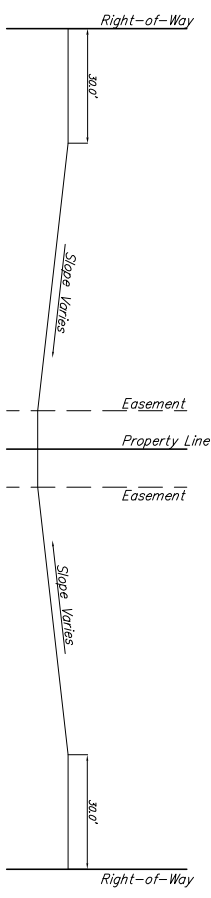


CAUTION! EXISTING KANSAS GAS SERVICE GAS PIPELINE.

CAUTION! EXISTING AQUILA GAS SERVICE GAS PIPELINE.

CAUTION! EXISTING TELEPHONE LINE.

RESERVE A, B, C TO BE REMOVED SUBSEQUENT TO THE BID ITEM FOR SITE CLEARING AND RESTORATION.



Typical Lot Grading Section

Right-of-Way Grading Section

ALL FILL PLACED IN RIGHT-OF-WAY SHALL BE COMPACTED TO A MINIMUM 95 PERCENT OF STANDARD PROCTOR DENSITY (ASTM D-699) FROM MINUS 3 TO PLUS 3 PERCENT OF OPTIMUM MOISTURE CONTENT.

44TH ST = 37 FT BC-BC
ST. PAUL = 35 FT BC-BC
CHASE, CUSTER, MT. CARMEL, AND ALL CUL-DE-SACS = 29 FT BC-BC

Legacy 3rd Addition
Contour Map
WICHITA, KANSAS

Ruggles & Bohm, P.A.
Engineering, Surveying, Land Planning

824 North Main
Wichita, Kansas 67203
(316) 264-8008
(316) 264-4821 fax
www.rkansas.com
E-mail: info@rkansas.com

DRAWING FILE: SMD - Pond Plans.j
PROJECT NUMBER: 468-84350

DESIGN	KWL	DATE	July 25, 2007
DRAWN	RLS		
REVIEW			
DATE			
SHEET	2	OF	17