

**BENCHMARKS:**  
 Square cut top of the south end of the east RCP 114.5'± north and 34.7'± east of the SW Cor., NW1/4, Sec. 31, Twp. 26-S, R-1-W. Elev. = 1358.12 NAVD88

"+" cut top of the east end of RCBC, 589.6'± north and 24.6'± east of the SW Cor., NW1/4, Sec. 31, Twp. 26-S, R-1-W. Elev. = 1359.71 NAVD88

WL Sta. 0+20.00 to WL Sta. 0+66.00  
 Install 46.00 L.F. 8" RJPVC by Directional Drilling.  
 Cost of Directional Drilling to be Incidental to L.F. 8" Pipe.

20.00 L.F. 8" Pipe  
 WL Sta. 0+00, Begin Line 1  
 BL Sta. -0+43.31, 22.00' Lt.  
 Tap existing 16" water main and extend 8" pipe east  
 1-16"x8" Tapping Sleeve  
 1-8" Tapping Valve  
 1-8" Valve Box  
 Valve Box Elev. = 1353.30  
 To be furnished & installed by City of Wichita Water Dept. Contractor to verify depth & location of existing 16" water line prior to construction

CAUTION! Overhead Electric Line Crossing  
 CAUTION! 12" Steel KGS U/G Nat. Gas Line Crossing

CAUTION! Existing 8" City of Maize Water Line Crossing

CAUTION! 6" Plastic Black Hills U/G Nat. Gas Line Crossing

WL Sta. 2+80.31, Line 1 = WL Sta. 0+00, Line 2  
 BL Sta. 2+30.91, 25.31' Lt.  
 1 - 8"x8" CIMJ Tee  
 1 - 8" Valve Assy. (N) (Gate Valve)  
 1 - 8" CIMJ 22.5' Bend (E)  
 Valve Box Elev. = 1359.35

16.74 L.F. 8" Pipe  
 WL Sta. 2+97.05, Line 1  
 BL Sta. 2+43.68, 24.29' Lt.  
 1 - 8" CIMJ 22.5' Bend

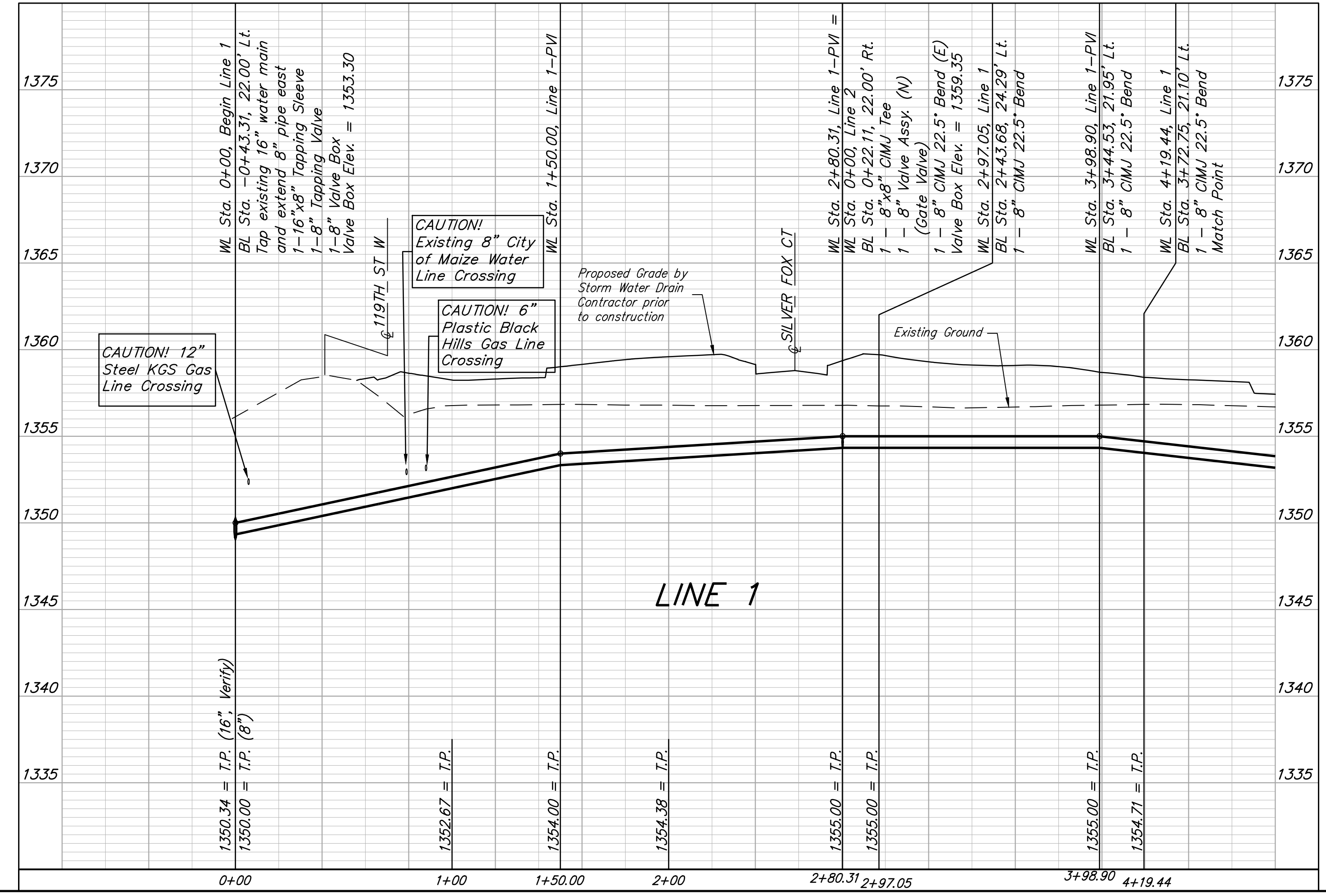
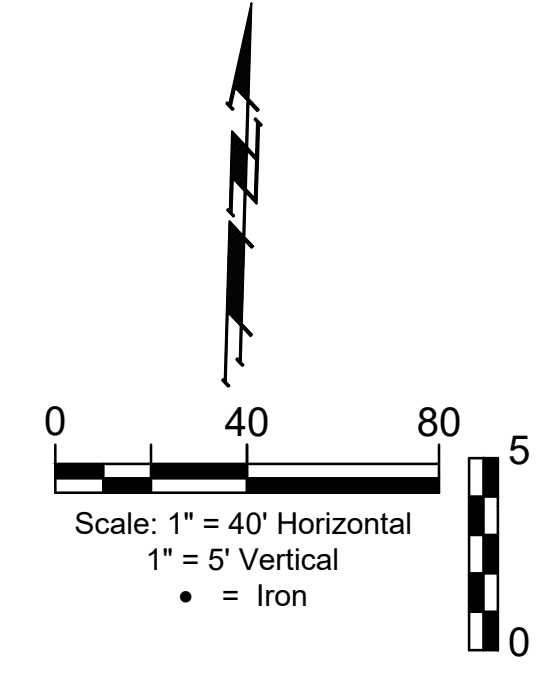
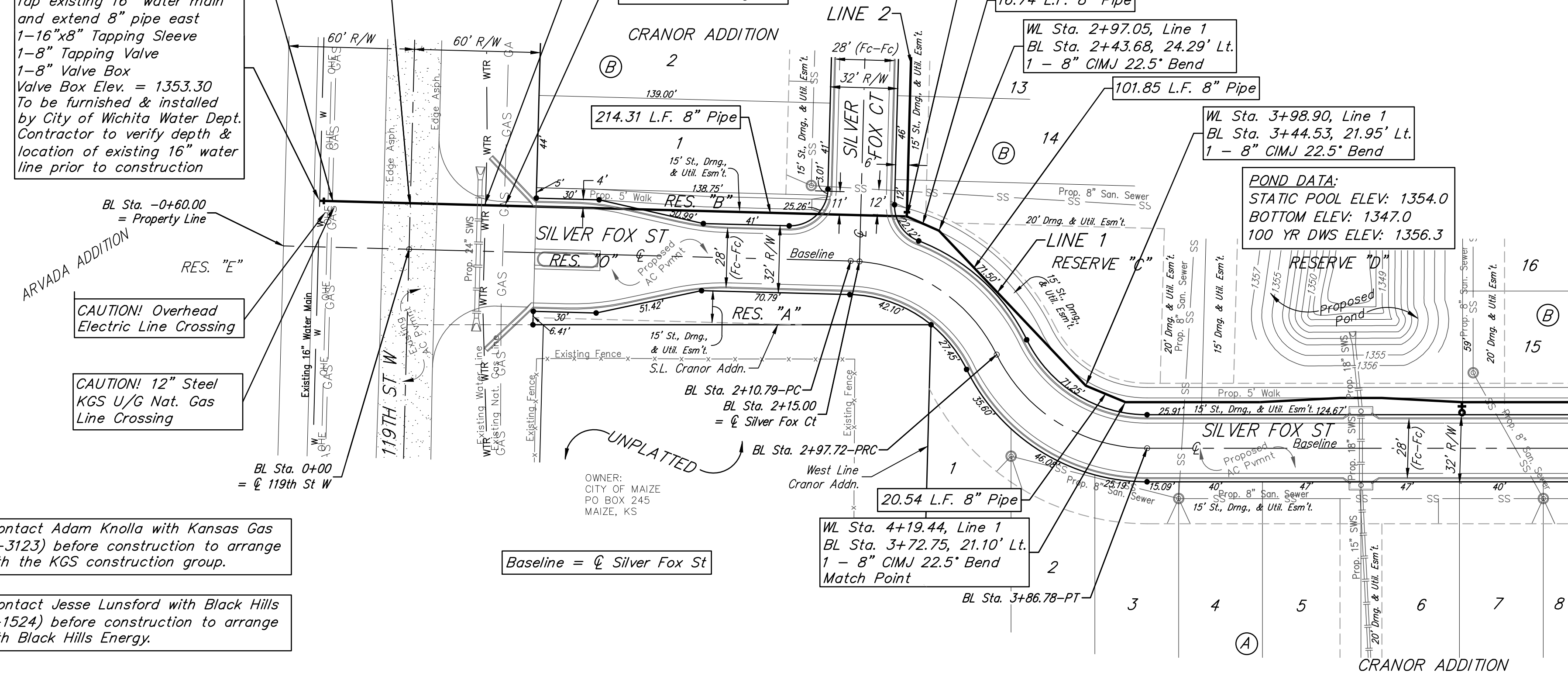
101.85 L.F. 8" Pipe  
 WL Sta. 3+98.90, Line 1  
 BL Sta. 3+44.53, 21.95' Lt.  
 1 - 8" CIMJ 22.5' Bend

POND DATA:  
 STATIC POOL ELEV: 1354.0  
 BOTTOM ELEV: 1347.0  
 100 YR DWS ELEV: 1356.3

20.54 L.F. 8" Pipe  
 WL Sta. 4+19.44, Line 1  
 BL Sta. 3+72.75, 21.10' Lt.  
 1 - 8" CIMJ 22.5' Bend  
 Match Point

Contractor shall contact Adam Knolla with Kansas Gas Service (316-832-3123) before construction to arrange and coordinate with the KGS construction group.

Contractor shall contact Jesse Lunsford with Black Hills Energy (620-218-1524) before construction to arrange and coordinate with Black Hills Energy.



**BAUGHMAN COMPANY**  
 315 Ellis St.  
 Wichita, KS 67211  
 316-262-7271  
 BaughmanCo.com

CRANOR ADDITION  
 PHASE I

**LINE 1**

WATER DISTRIBUTION SYSTEM  
 PROJECT NUMBER:  
 DESIGN: DMV DRAWN: JAK  
 DATE: Sep. 12, 2024  
 SHEET 4 OF 28

File: E:\Projects\Cranor Addition\Kelsey 119th\_22-04-P768\Engineering\Phase 1\WTR\_23-03-E466.dwg