

GENERAL NOTES:

1. Contractor will be required to provide notice to utility companies a minimum of seventy-two (72) hours prior to any excavation, as follows:

- Kansas One-Call 687-2470
- The Contractor must notify the following in case of an emergency:
- Cox Communications 262-4270
- Kansas Gas Service 1-888-482-4950
- Evergny 383-8650
- Black Hills Energy 1-800-303-0357
- AT&T 268-2245
- City of Wichita Water Dept. 268-4563
- City of Wichita Sewer Maint. 268-4024
- City of Wichita Storm Sewer Maint. 268-4090
- City of Wichita Traffic Maint. 268-4034

2. Utility service lines, poles, valve boxes, meters, and etcetera are to be adjusted as necessary by others prior to construction unless the plans specifically call for their adjustment by the Contractor or unless the plans specifically identify a utility to be adjusted by its owner during construction. Existing utilities and their location, as shown on the plans, represent the best information obtainable for design. The Contractor will be required to work around existing utilities within the right-of-way which do not conflict with proposed construction.

3. Rubble from the removal of miscellaneous structures and excess excavation which is to be wasted shall be disposed of on sites to be provided by the Contractor. These sites shall be approved by the Engineer as to suitability, appearance and site location. Locations, in the opinion of the Engineer, that will leave an unsightly appearance will not be approved. All disposal sites must be approved by the Kansas Department of Health and Environment. Material either stockpiled or disposed of in a flood plain would require a Kansas State Board of Agriculture permit. Any material dumped in waters of the United States or wetlands is subject to U.S. Corps of Engineers permitting regulations. Any material buried or stockpiled beyond approved construction limits would require additional archaeological investigations unless buried in a previously approved borrow location.

4. Trees and shrubs in public right-of-way which are in direct conflict with proposed new construction shall be removed by the Contractor with the Engineer's approval. Trees and shrubs which are not in direct conflict with proposed new construction shall be saved and protected from damage.

5. The Contractor shall give all property owners and/or tenants of developed property abutting the construction of this project a minimum of ten (10) days notice prior to start of construction.

6. The Contractor shall be responsible for preserving property irons. The Contractor will be required to re-establish any property irons which are damaged or destroyed by his construction operations. Such irons shall be re-established by a licensed land surveyor in accordance with state laws.

7. All existing and proposed erosion control measures including silt fencing, erosion control mat, straw bales, inlet barriers, and const. entrance shall be maintained throughout construction by the contractor and until project is accepted by the City of Wichita. The on-site engineer shall complete weekly reports on the status of erosion control measures. The contractor shall be required to comply with maintenance and/or replacement of erosion control measures as determined by the on-site engineer until project is accepted by City of Wichita. Maintenance and/or replacement of erosion control measures to be paid by L.S. bid item "Maintain Existing BMP's."

8. All excess excavation shall remain on-site and shall be stockpiled or spread at a location determined by the engineer.

9. The Contractor shall be responsible for maintaining continuous flow of sewage through construction. Contractor's proposed method for maintaining sewage flow shall be approved by the Engineer. Cost of maintaining flow of sewage through construction will not be paid for directly and this cost shall be considered as subsidiary to the other pay items of work.

10. All areas disturbed by construction are to be seeded as follows:
Seed -- Rye grass; 5 lbs./1000 Sq. Ft.

All costs associated with seeding including mobilization, preparation of ground, seeding, fertilizing, mulching, etc. shall be included in the L.S. bid item "Seeding".

11. Construction Phasing - Stormwater Drain project for this development has bid through the City of Maize. Construction of projects shall occur concurrently with Contractors coordinating line crossings as necessary for construction. If the same Contractor is awarded all projects, construction may be completed in the Contractor's desired order.

12. The developer for this project is Perfection Builders, LLC.
443 N. Maize Rd, Wichita, KS 67212
316-729-1900 Scott@perfectionbuilders.com

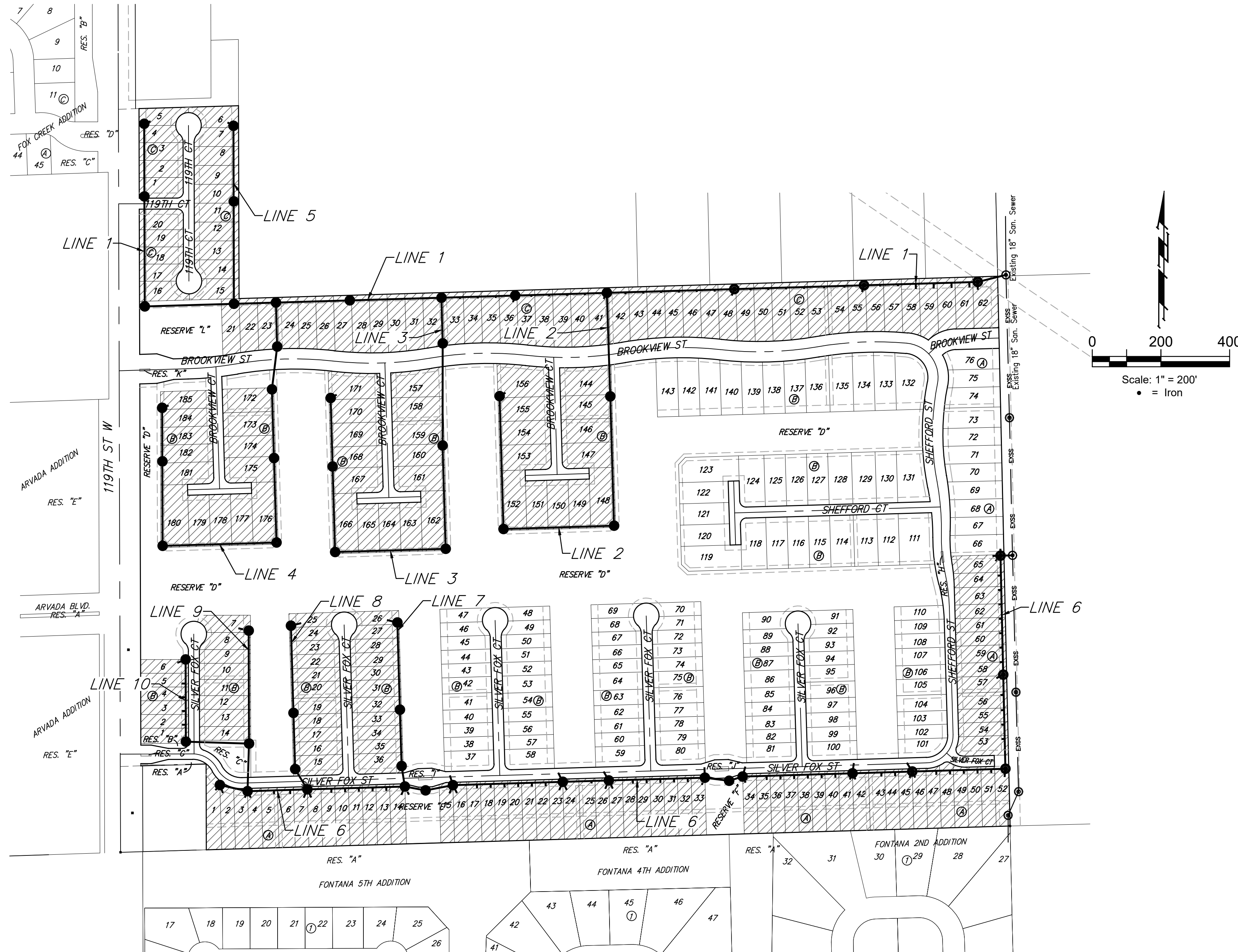
SANITARY SEWER IMPROVEMENTS

to serve

CRANOR ADDITION - PHASE I

CITY OF WICHITA, KANSAS

Paul Gunzelman, P.E., City Engineer
Project Number: 468-2023-026684
Org Code: 47270023 Munis #E3135



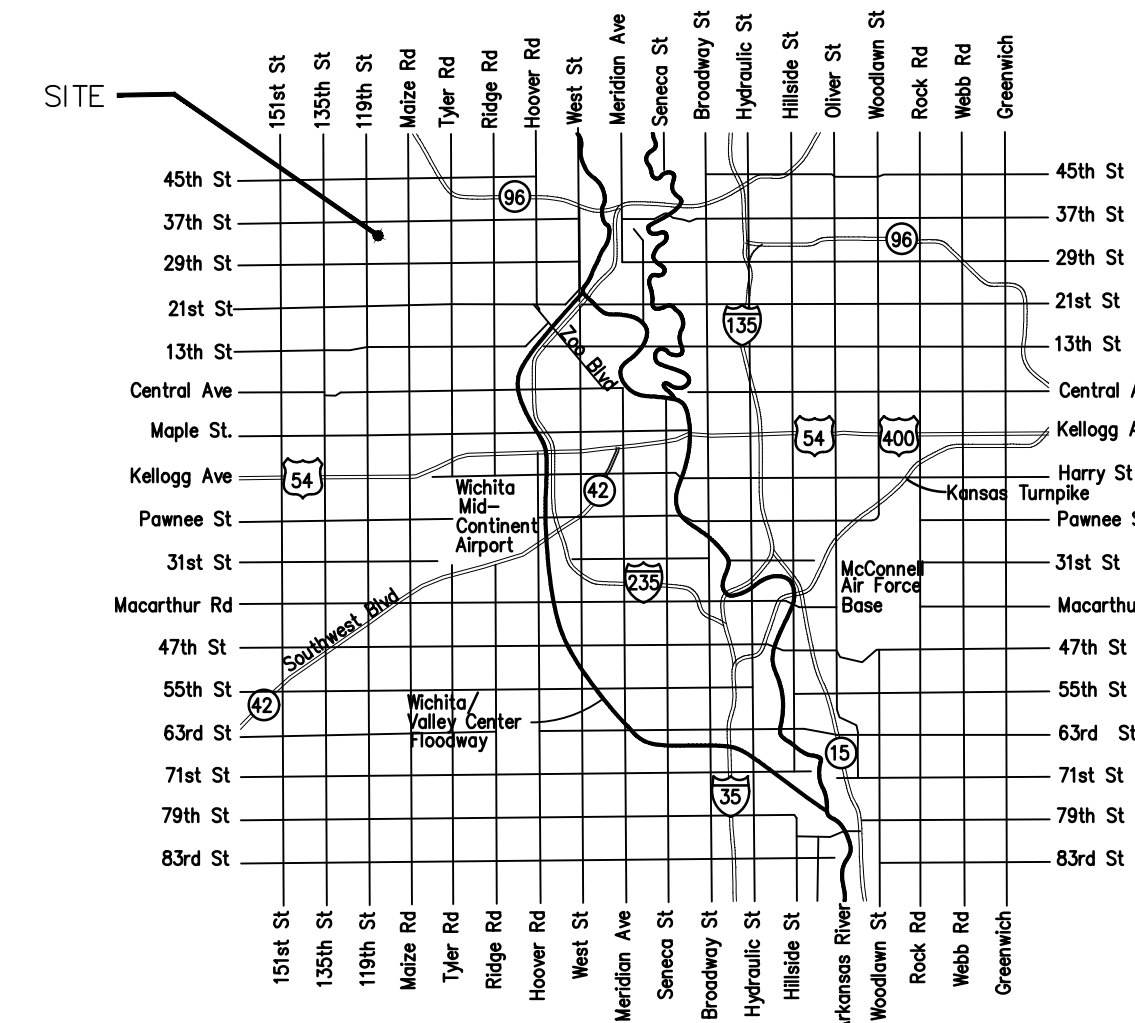
BENCHMARKS

Square cut top of the south end of the east RCP 114.5'± north and 34.7'± east of the SW Cor., NW1/4, Sec. 31, Twp. 26-S, R-1-W. Elev. = 1358.12 NAVD88

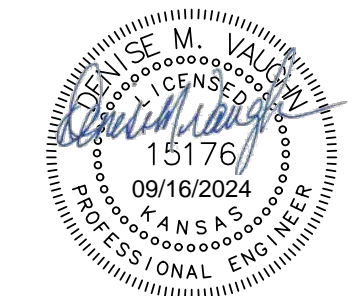
"+" cut top of the east end of RCB, 589.6'± north and 24.6'± east of the SW Cor., NW1/4, Sec. 31, Twp. 26-S, R-1-W. Elev. = 1359.71 NAVD88

SHEET INDEX

Title Sheet	1
Line 1	2-5
Line 2	6-7
Line 3	8-9
Line 4	10-11
Line 5	12
Line 6	13-16
Line 7	17
Line 8	18
Line 9	19
Line 10	20
Erosion Control Plan	21
Erosion Control BMP Details	22-26
Precast Manhole Detail	27
Frame & Cover Detail	28
Vertical Riser Detail	29
Coordinate Sheet	30
Copy of Plat	31-35



VICINITY MAP



BAUGHMAN COMPANY
315 Ellis St. Wichita, KS 67211 316-262-7271
BaughmanCo.com

BENEFIT DISTRICT

