

**BENCHMARKS:**  
 Square cut top of the south end of the east RCP 114.5'± north and 34.7'± east of the SW Cor., NW1/4, Sec. 31, Twp. 26-S, R-1-W. Elev. = 1358.12 NAVD88

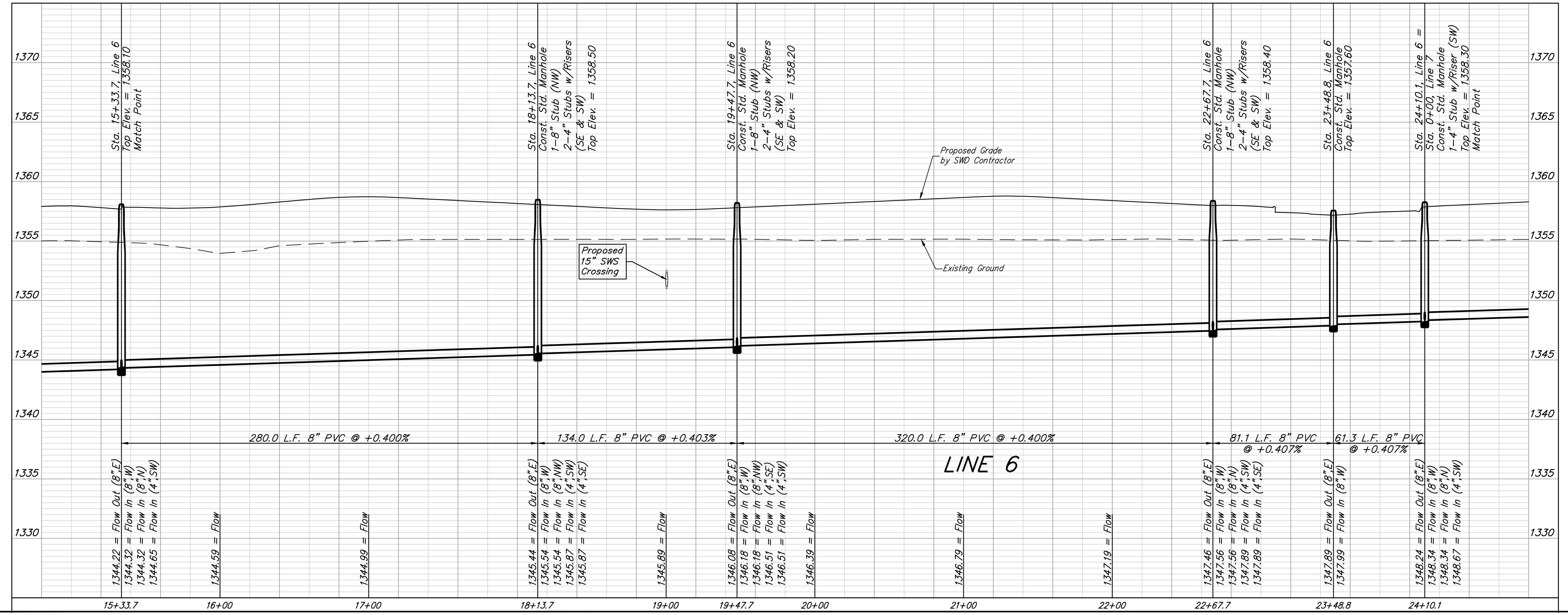
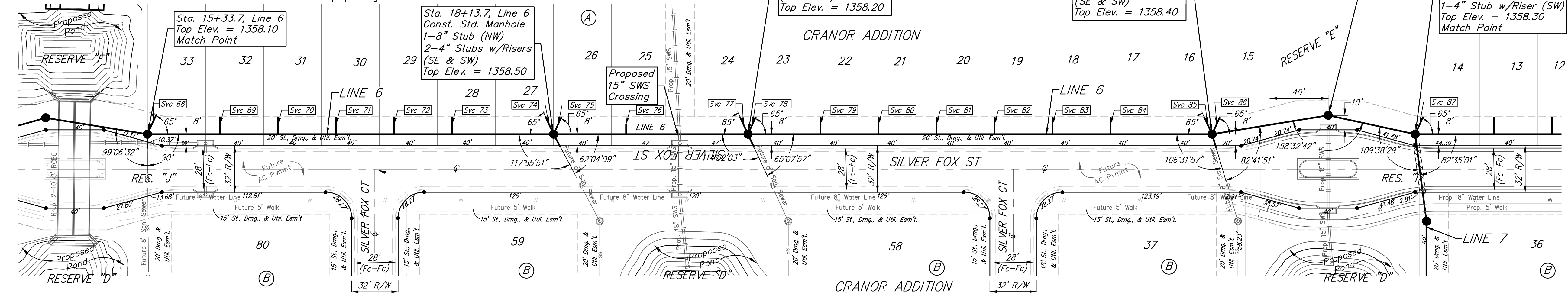
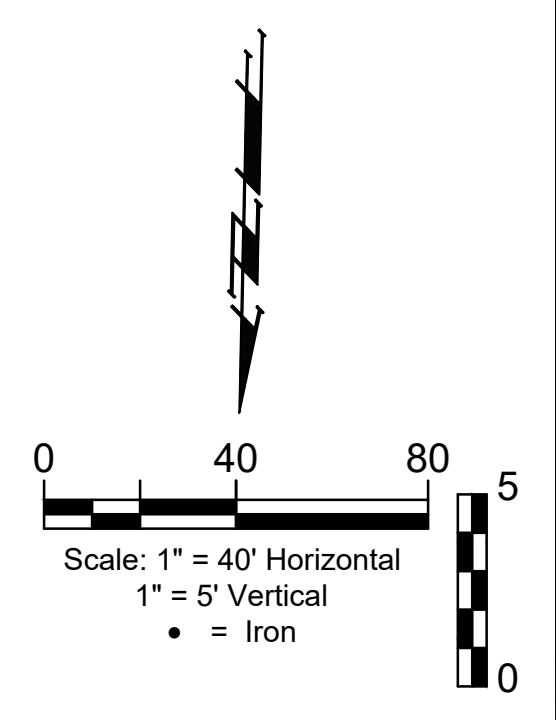
"+" cut top of the east end of RCBC, 589.6'± north and 24.6'± east of the SW Cor., NW1/4, Sec. 31, Twp. 26-S, R-1-W. Elev. = 1359.71 NAVD88


**SEWER SERVICE TABLE**

NUMBER	TYPE	LOCATION				FOR INFORMATION ONLY	
		LOT NO.	BLOCK NO.	LINE NO.	STATION/DIRECTION	APPROXIMATE LENGTH 4" PIPE	
						VERTICAL	HORIZONTAL
69	8" x 4" Tee	32	A	6	15+83.7/Lt.	9.4'	12'
70	8" x 4" Tee	31	A	6	16+23.7/Lt.	9.4'	12'
71	8" x 4" Tee	30	A	6	16+63.7/Lt.	9.5'	12'
72	8" x 4" Tee	29	A	6	17+03.7/Lt.	9.4'	12'
73	8" x 4" Tee	28	A	6	17+43.7/Lt.	8.9'	12'
74	4" Stub	27	A	6	18+13.7/Lt.	8'	13'
75	4" Stub	26	A	6	18+13.7/Lt.	8'	13'
76	8" x 4" Tee	25	A	6	18+63.7/Lt.	7.8'	12'
77	4" Stub	24	A	6	19+47.7/Lt.	5.6'	13'
78	4" Stub	23	A	6	19+47.7/Lt.	5.6'	13'
79	8" x 4" Tee	22	A	6	19+97.7/Lt.	7.4'	12'
80	8" x 4" Tee	21	A	6	20+37.7/Lt.	7.5'	12'
81	8" x 4" Tee	20	A	6	20+77.7/Lt.	7.5'	12'
82	8" x 4" Tee	19	A	6	21+17.7/Lt.	7.5'	12'
83	8" x 4" Tee	18	A	6	21+57.7/Lt.	7.3'	12'
84	8" x 4" Tee	17	A	6	21+97.7/Lt.	6.9'	12'
85	4" Stub	16	A	6	22+67.7/Lt.	6'	13'
86	4" Stub	15	A	6	22+67.7/Lt.	6'	13'
87	4" Stub	14	A	6	24+10.1/Lt.	4.7'	13'

NOTE: Vertical riser pipe shall be extended to 2' minimum above ground water elevation and 4' maximum below proposed ground elevation.

The Contractor shall be required to backfill trench with sand from Sta. 15+33.7 to Sta. 24+10.1, Line 6. To be bid as "L.F. Fill, Sand, Flushed & Vibrated"





**BAUGHMAN COMPANY**

315 Ellis St.  
 Wichita, KS 67211  
 316-262-7271  
 BaughmanCo.com

CRANOR ADDITION  
 PHASE I

**LINE 6**

SANITARY SEWER IMPROVEMENTS

PROJECT NUMBER:

DESIGN: DMV DRAWN: JAK  
 DATE: Sep. 13, 2024

SHEET **15** OF **35**

File: E:\Projects\Cranor Addition\Kelsey 119th\22-04-P768\Engineering\Phase 1\SS\_23-03-03-E467.dwg