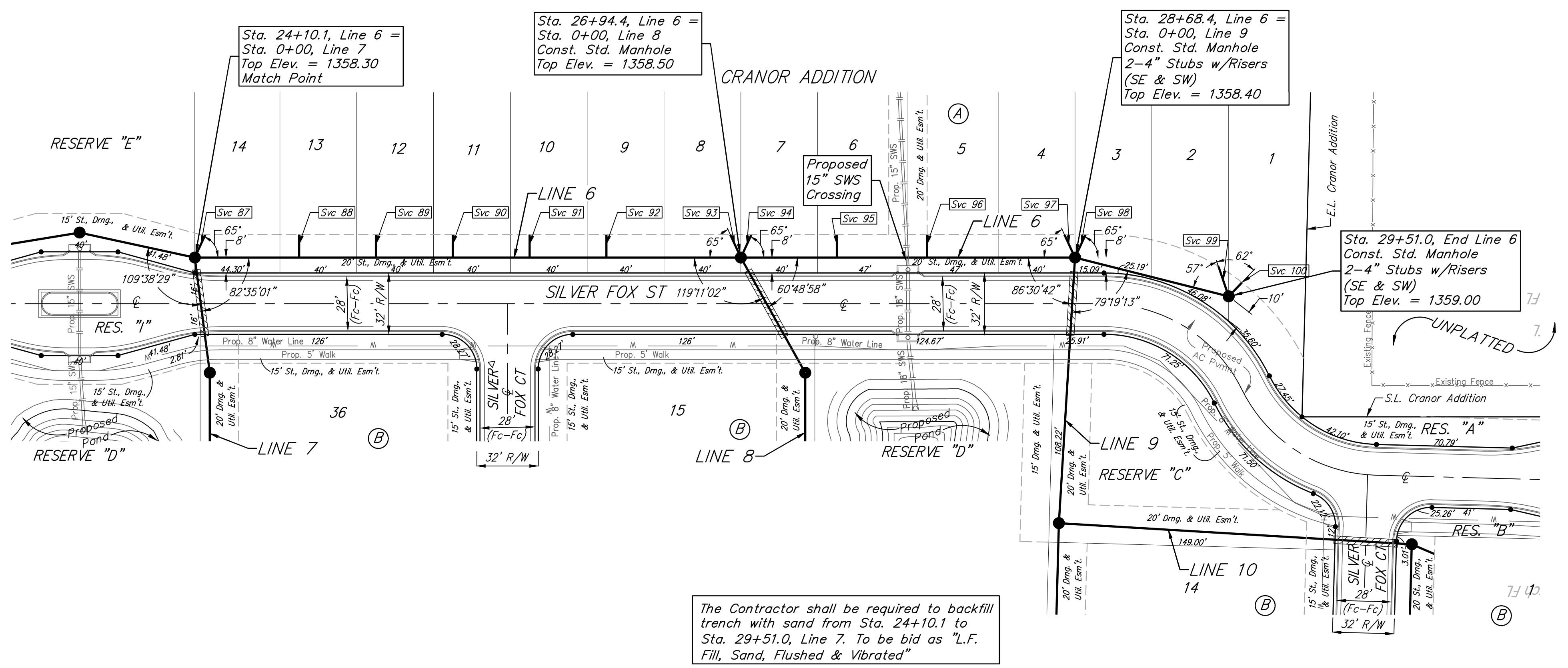
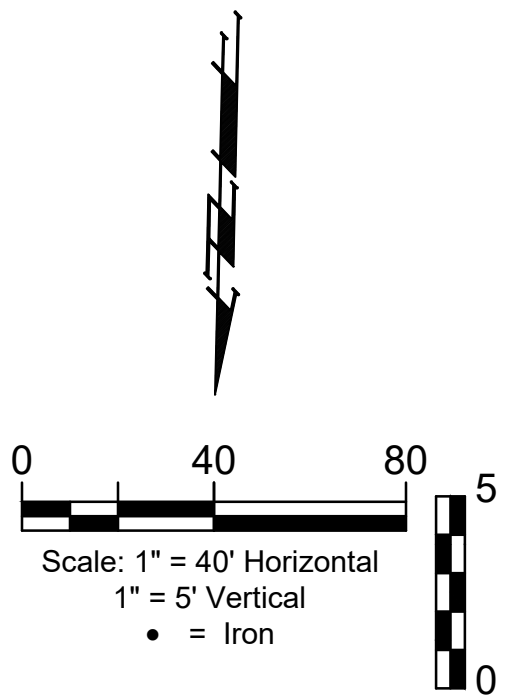


BENCHMARKS:
 Square cut top of the south end of the east RCP 114.5'± north and 34.7'± east of the SW Cor., NW1/4, Sec. 31, Twp. 26-S, R-1-W. Elev. = 1358.12 NAVD88

"+" cut top of the east end of RCBC, 589.6'± north and 24.6'± east of the SW Cor., NW1/4, Sec. 31, Twp. 26-S, R-1-W. Elev. = 1359.71 NAVD88

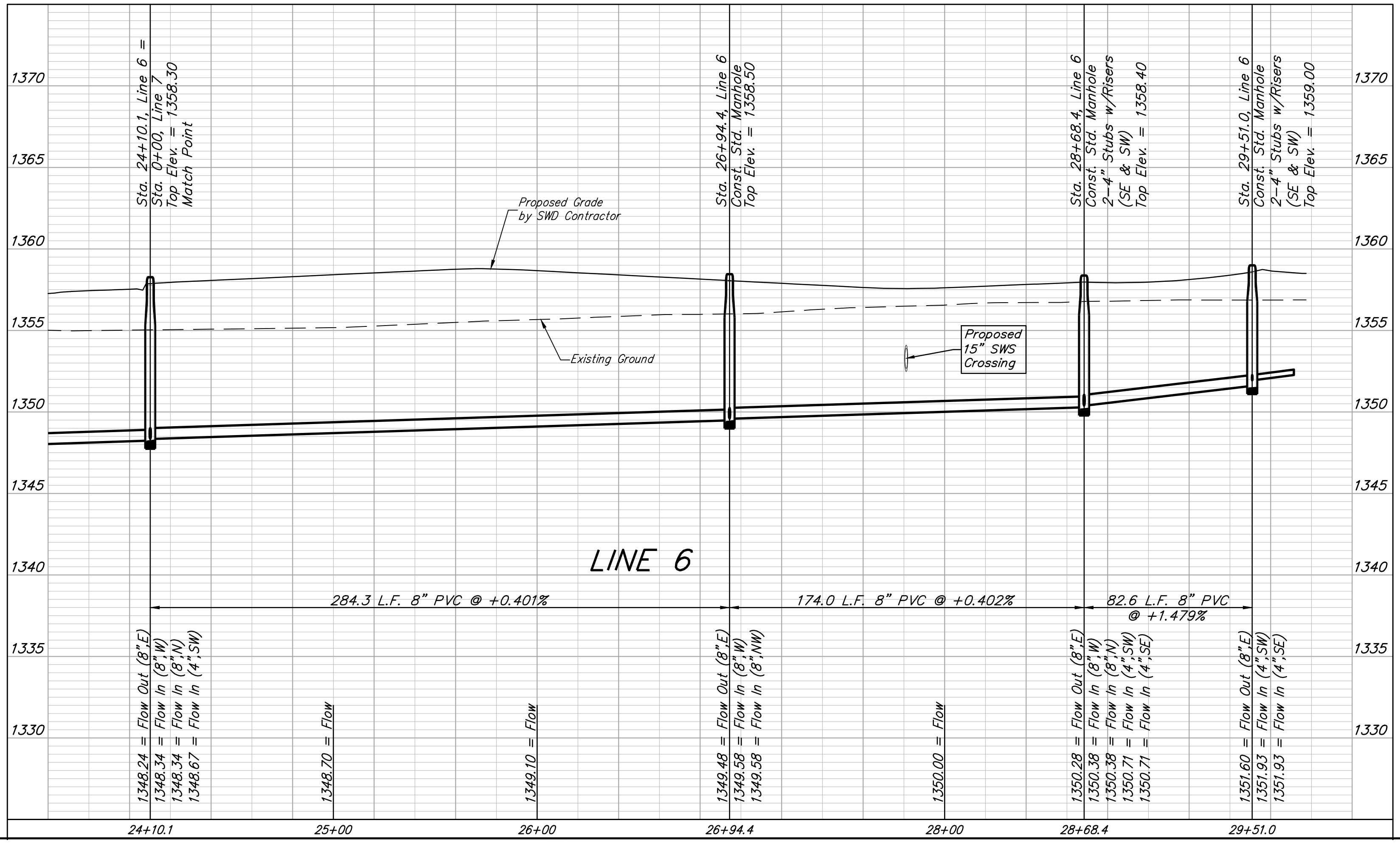


The Contractor shall be required to backfill trench with sand from Sta. 24+10.1 to Sta. 29+51.0, Line 7. To be bid as "L.F. Fill, Sand, Flushed & Vibrated"

SEWER SERVICE TABLE

| NUMBER | TYPE | LOCATION | | | | FOR INFORMATION ONLY | |
|--------|-------------|----------|-----------|----------|-------------------|----------------------------|------------|
| | | LOT NO. | BLOCK NO. | LINE NO. | STATION/DIRECTION | APPROXIMATE LENGTH 4" PIPE | |
| | | | | | | VERTICAL | HORIZONTAL |
| 88 | 8" x 4" Tee | 13 | A | 6 | 24+64.4/Lt. | 5.3' | 12' |
| 89 | 8" x 4" Tee | 12 | A | 6 | 25+04.4/Lt. | 5.4' | 12' |
| 90 | 8" x 4" Tee | 11 | A | 6 | 2+44.4/Lt. | 5.4' | 12' |
| 91 | 8" x 4" Tee | 10 | A | 6 | 25+84.4/Lt. | 5.4' | 12' |
| 92 | 8" x 4" Tee | 9 | A | 6 | 26+24.4/Lt. | 5' | 12' |
| 93 | 4" Stub | 8 | A | 6 | 26+94.4/Lt. | 4.1' | 13' |
| 94 | 4" Stub | 7 | A | 6 | 26+94.4/Lt. | 4.1' | 13' |
| 95 | 8" x 4" Tee | 6 | A | 6 | 27+44.4/Lt. | 3.7' | 12' |
| 96 | 8" x 4" Tee | 5 | A | 6 | 27+94.4/Lt. | 3.4' | 12' |
| 97 | 4" Stub | 4 | A | 6 | 28+68.4/Lt. | 3.5' | 13' |
| 98 | 4" Stub | 3 | A | 6 | 28+68.4/Lt. | 3.5' | 13' |
| 99 | 4" Stub | 2 | A | 6 | 29+51.0/Lt. | 3.1' | 16' |
| 100 | 4" Stub | 1 | A | 6 | 29+51.0/Lt. | 3.1' | 10' |

NOTE: Vertical riser pipe shall be extended to 2' minimum above ground water elevation and 4' maximum below proposed ground elevation.



BAUGHMAN COMPANY

315 Ellis St.
 Wichita, KS 67211
 316-262-7271
 BaughmanCo.com

CRANOR ADDITION
 PHASE I

LINE 6

SANITARY SEWER IMPROVEMENTS

PROJECT NUMBER:

DESIGN: DMV DRAWN: JAK
 DATE: Sep. 13, 2024

SHEET **16** OF **35**