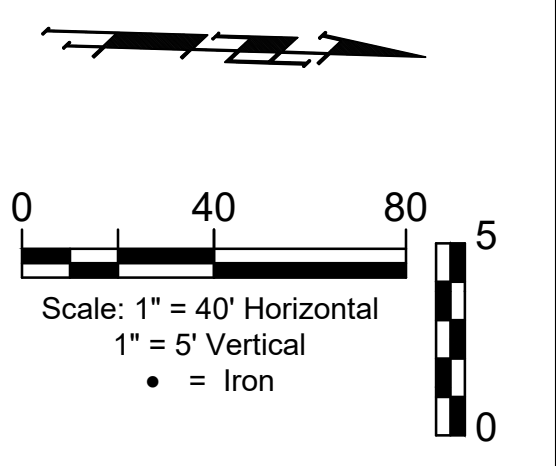


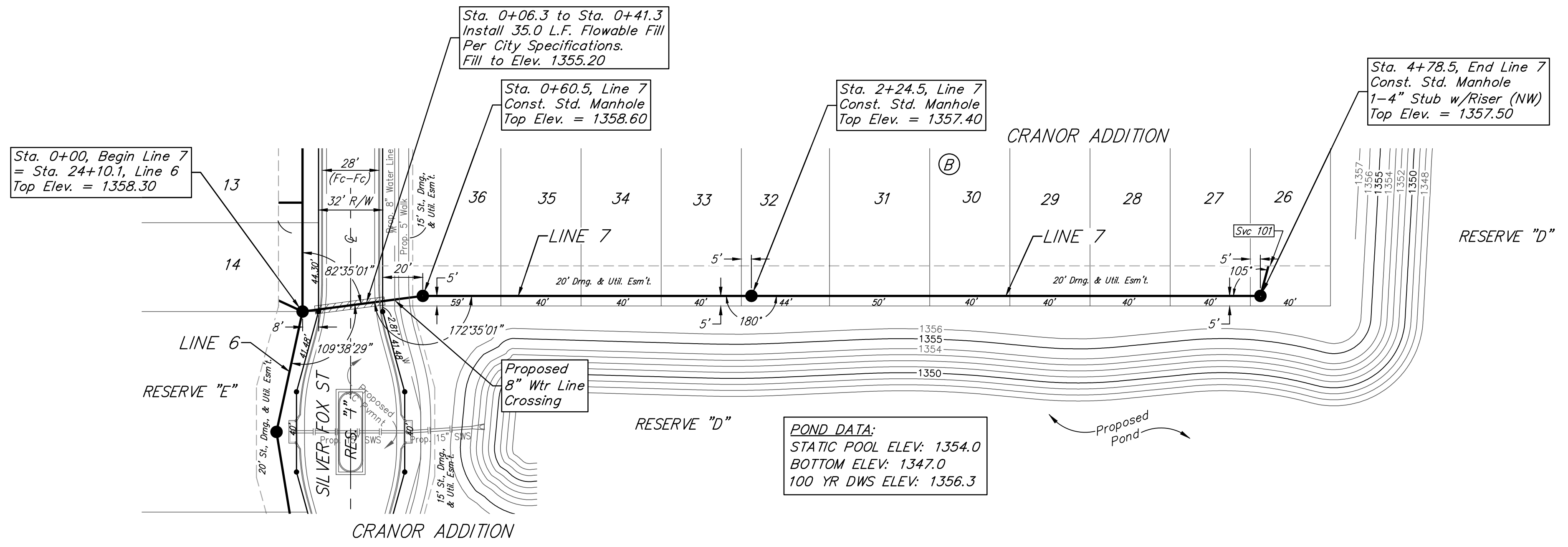
BENCHMARKS:
 Square cut top of the south end of the east RCP 114.5'± north and 34.7'± east of the SW Cor., NW1/4, Sec. 31, Twp. 26-S, R-1-W. Elev. = 1358.12 NAVD88
 "x" cut top of the east end of RCBC, 589.6'± north and 24.6'± east of the SW Cor., NW1/4, Sec. 31, Twp. 26-S, R-1-W. Elev. = 1359.71 NAVD88



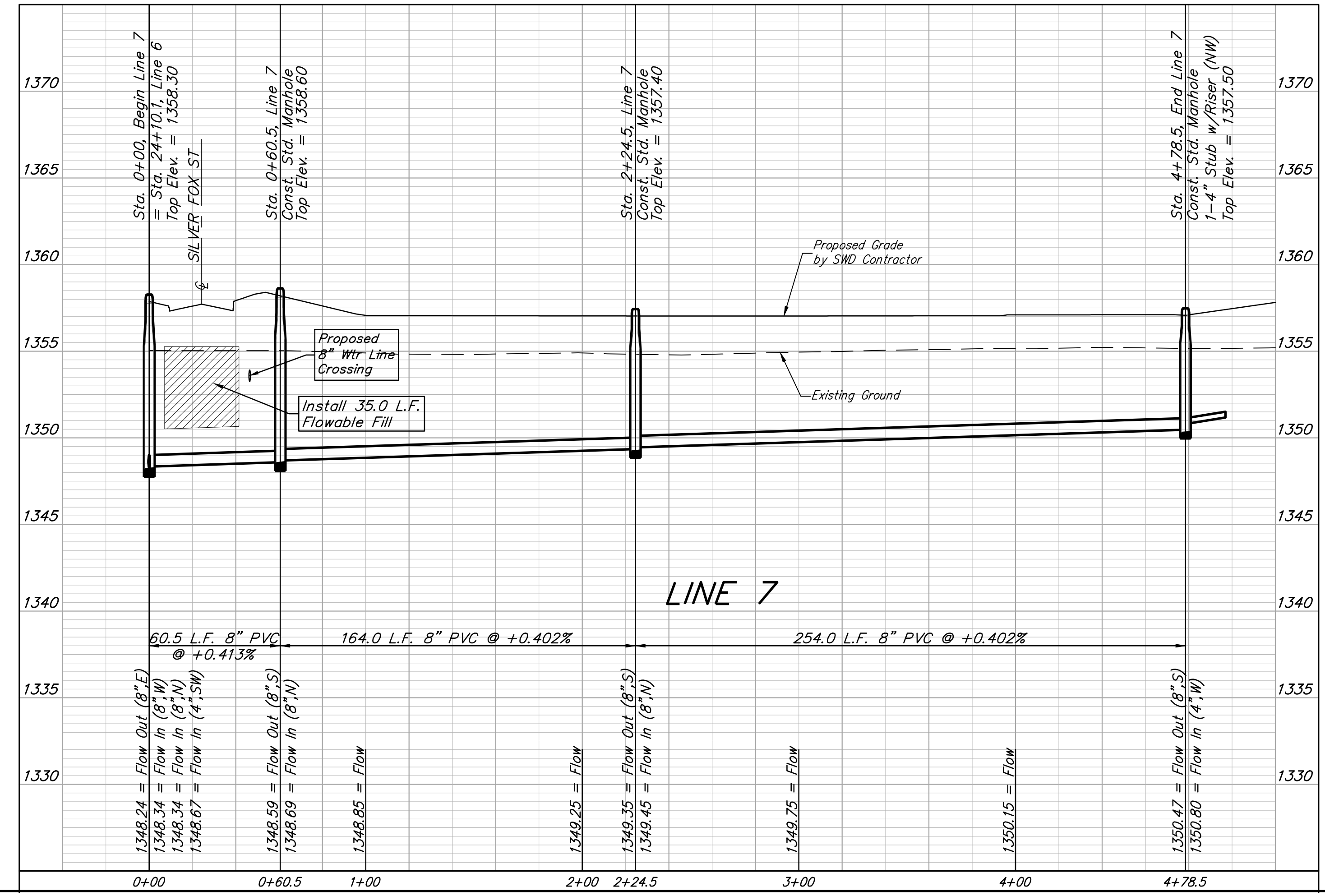
SEWER SERVICE TABLE

| NUMBER | TYPE | LOCATION | | | | FOR INFORMATION ONLY | |
|--------|---------|----------|-----------|----------|-------------------|----------------------------|----------|
| | | LOT NO. | BLOCK NO. | LINE NO. | STATION/DIRECTION | APPROXIMATE LENGTH 4" PIPE | VERTICAL |
| 101 | 4" Stub | 26 | B | 7 | 4+78.5/L. | 4' | 16' |

NOTE: Vertical riser pipe shall be extended to 2' minimum above ground water elevation and 4' maximum below proposed ground elevation.



POND DATA:
 STATIC POOL ELEV: 1354.0
 BOTTOM ELEV: 1347.0
 100 YR DWS ELEV: 1356.3



BAUGHMAN COMPANY
 315 Ellis St.
 Wichita, KS 67211
 316-262-7271
 BaughmanCo.com

CRANOR ADDITION
 PHASE I

LINE 7

SANITARY SEWER
 IMPROVEMENTS

PROJECT NUMBER:

DESIGN: DMV DRAWN: JAK
 DATE: Sep. 13, 2024

SHEET 17 OF 35

File: E:\Projects\Cranor Addition\Kelsey 119th_22-04-P768\Engineering\Phase 1\SS_23-03-03-E467.dwg