

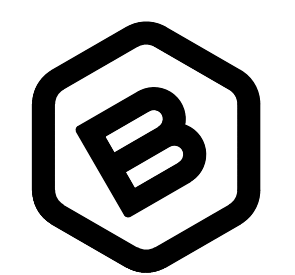
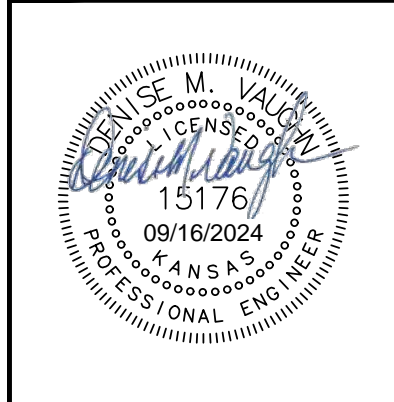
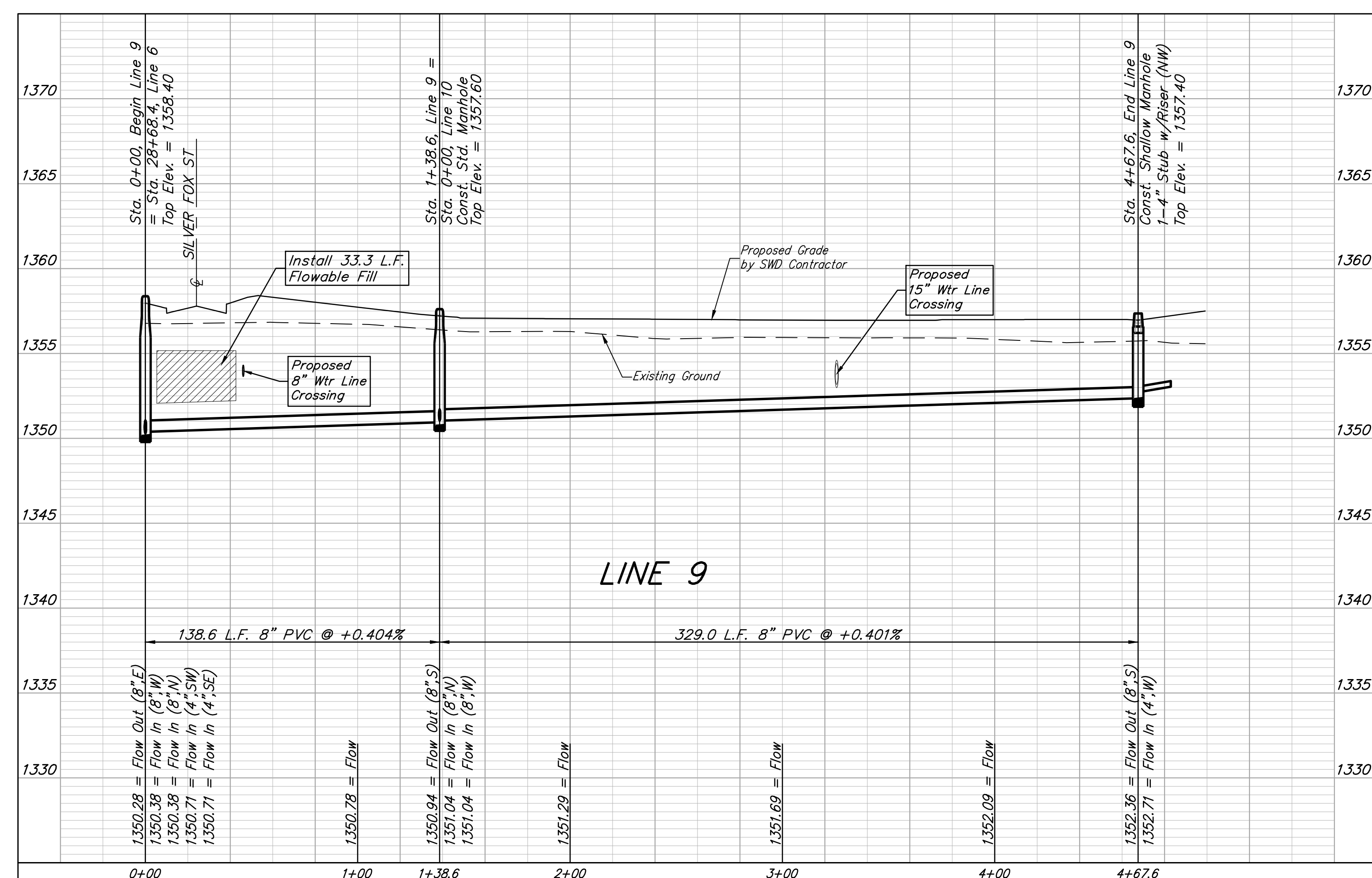
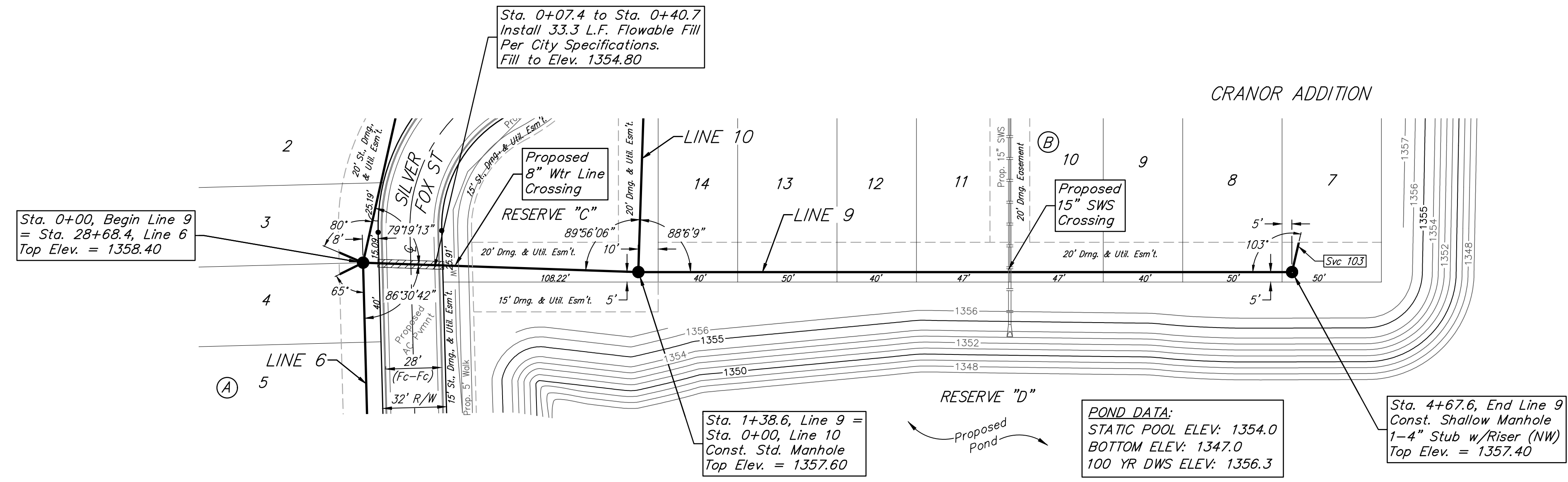
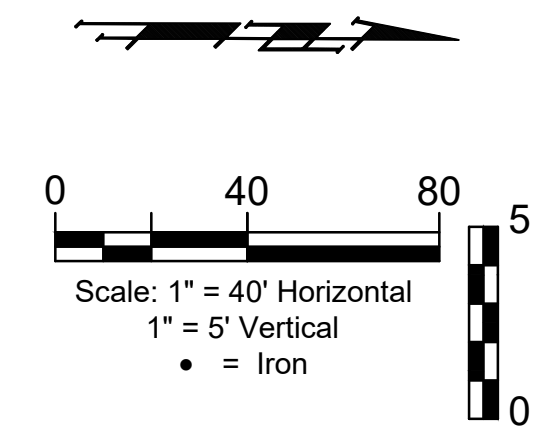
**BENCHMARKS:**  
 Square cut top of the south end of the east RCP 114.5'± north and 34.7'± east of the SW Cor., NW1/4, Sec. 31, Twp. 26-S, R-1-W. Elev. = 1358.12 NAVD88

"x" cut top of the east end of RCBC, 589.6'± north and 24.6'± east of the SW Cor., NW1/4, Sec. 31, Twp. 26-S, R-1-W. Elev. = 1359.71 NAVD88

SEWER SERVICE TABLE

| NUMBER | TYPE    | LOCATION |           |          |                   | FOR INFORMATION ONLY       |                     |
|--------|---------|----------|-----------|----------|-------------------|----------------------------|---------------------|
|        |         | LOT NO.  | BLOCK NO. | LINE NO. | STATION/DIRECTION | APPROXIMATE LENGTH 4" PIPE | VERTICAL HORIZONTAL |
| 103    | 4" Stub | 7        | B         | 9        | 4+67.6/Lt.        | 0.7'                       | 16'                 |

NOTE: Vertical riser pipe shall be extended to 2' minimum above ground water elevation and 4' maximum below proposed ground elevation.



**BAUGHMAN COMPANY**  
 315 Ellis St.  
 Wichita, KS 67211  
 316-262-7271  
 BaughmanCo.com

CRANOR ADDITION  
 PHASE I

**LINE 9**

SANITARY SEWER IMPROVEMENTS

PROJECT NUMBER:

DESIGN: DMV DRAWN: JAK

DATE: Sep. 13, 2024

SHEET OF  
**19 35**

File: E:\Projects\Cranor Addition\Kasey 119th\_22-04-P768\Engineering\Phase 1\SS\_23-03-03-E467.dwg