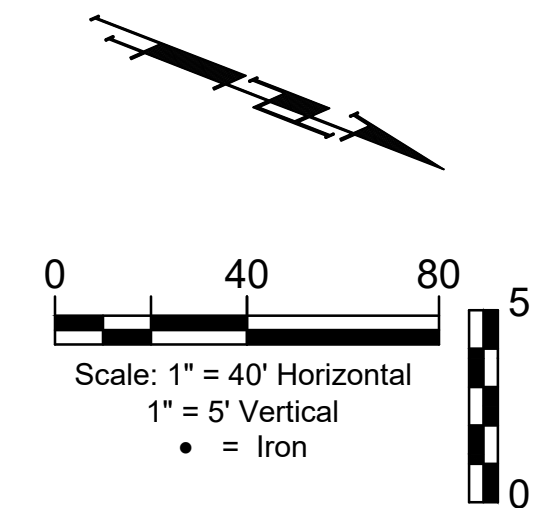
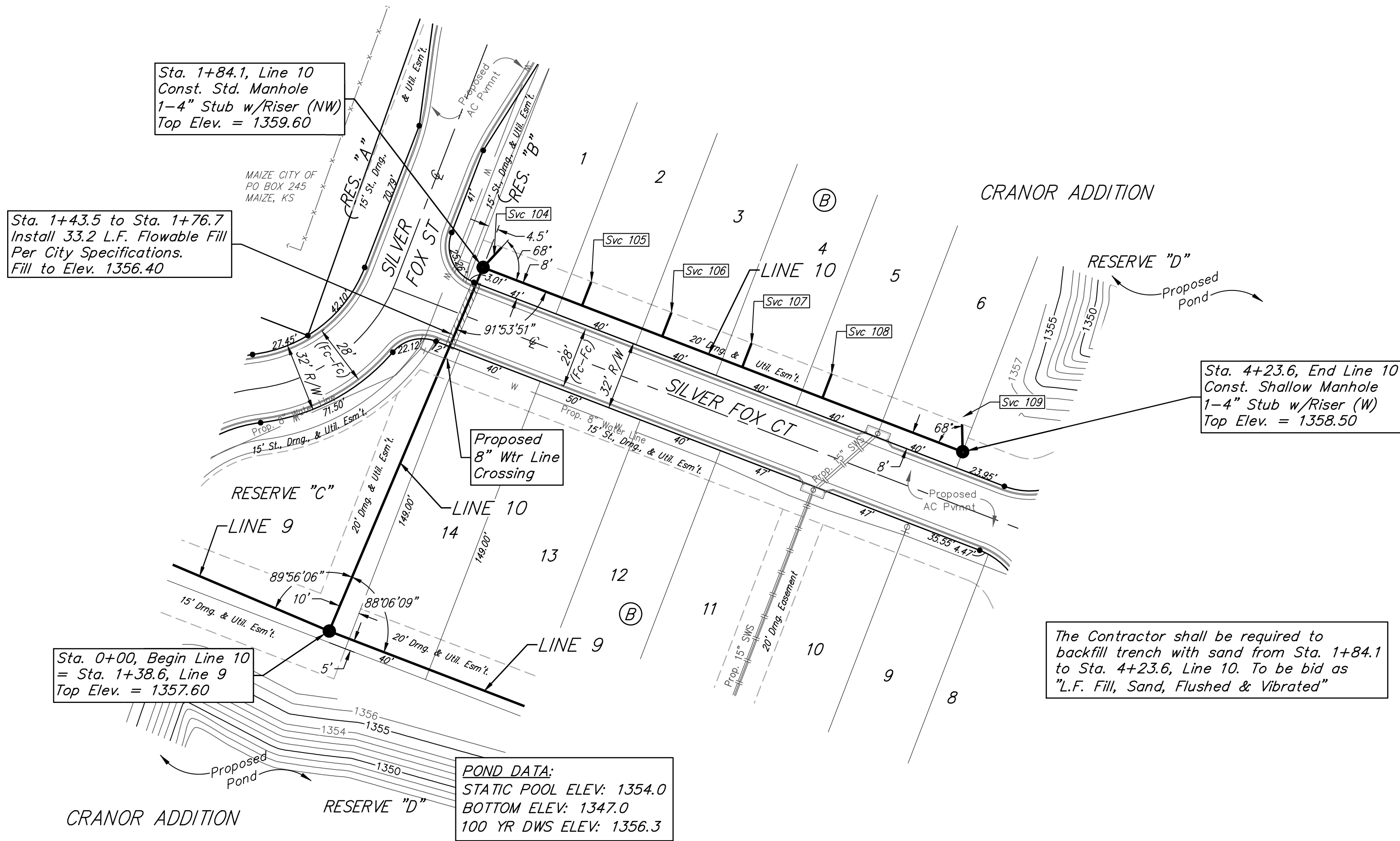


BENCHMARKS:
 Square cut top of the south end of the east RCP 114.5'± north and 34.7'± east of the SW Cor., NW1/4, Sec. 31, Twp. 26-S, R-1-W. Elev. = 1358.12 NAVD88
 "x" cut top of the east end of RCBC, 589.6'± north and 24.6'± east of the SW Cor., NW1/4, Sec. 31, Twp. 26-S, R-1-W. Elev. = 1359.71 NAVD88

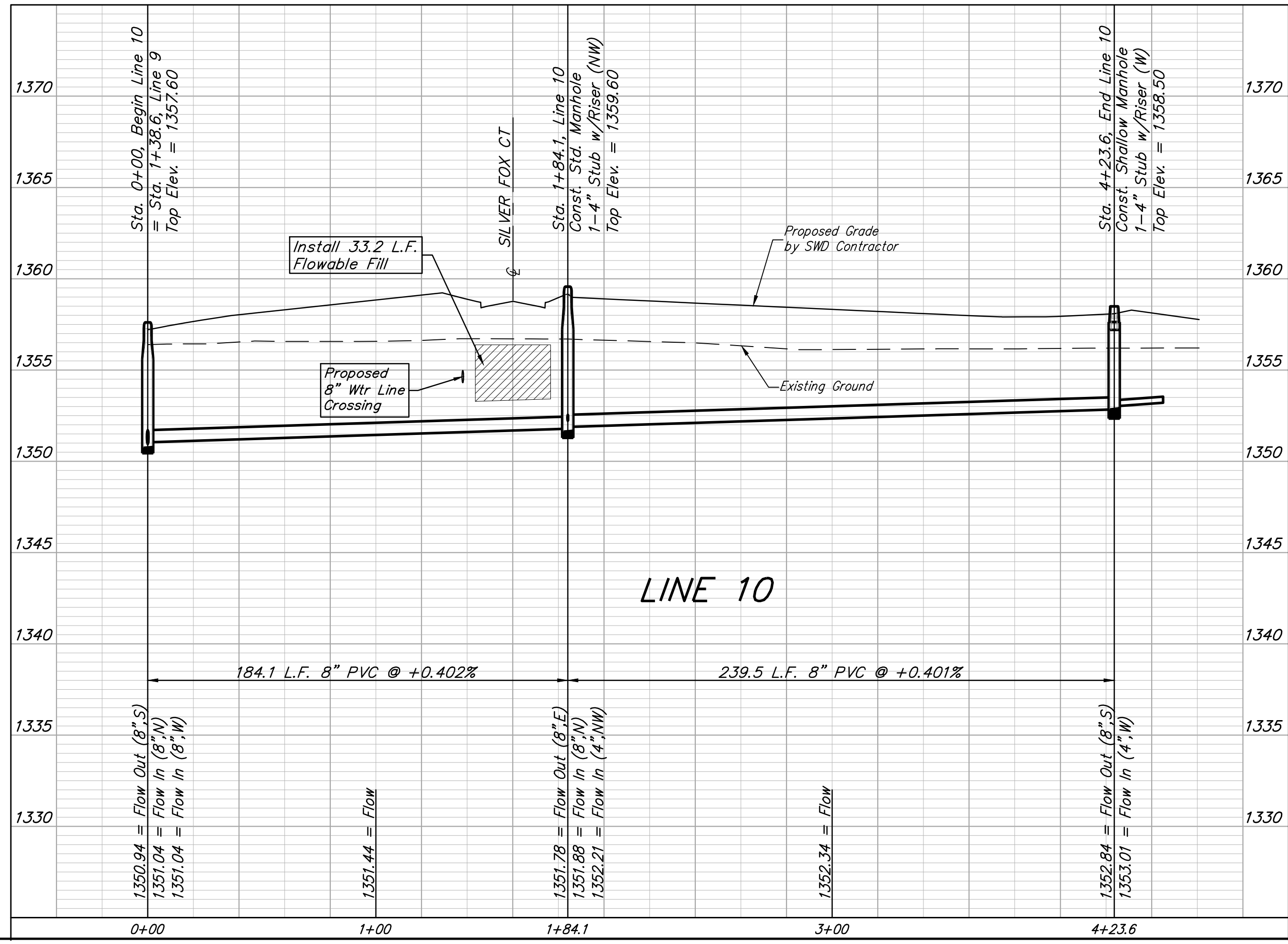


SEWER SERVICE TABLE

NUMBER	TYPE	LOCATION				FOR INFORMATION ONLY	
		LOT NO.	BLOCK NO.	LINE NO.	STATION/DIRECTION	APPROXIMATE LENGTH 4" PIPE	
						VERTICAL	HORIZONTAL
104	4" Stub	1	B	10	1+84.0/Lt.	3.2'	12'
105	8" x 4" Tee	2	B	10	2+33.6/Lt.	2.8'	12'
106	8" x 4" Tee	3	B	10	2+73.6/Lt.	2.4'	12'
107	8" x 4" Tee	4	B	10	3+13.6/Lt.	1.7'	12'
108	8" x 4" Tee	5	B	10	3+53.6/Lt.	1.6'	12'
109	4" Stub	6	B	10	4+23.6/Lt.	1.6'	13'

NOTE: Vertical riser pipe shall be extended to 2' minimum above ground water elevation and 4' maximum below proposed ground elevation.

The Contractor shall be required to backfill trench with sand from Sta. 1+84.1 to Sta. 4+23.6, Line 10. To be bid as "L.F. Fill, Sand, Flushed & Vibrated"



BAUGHMAN COMPANY
 315 Ellis St.
 Wichita, KS 67211
 316-262-7271
 BaughmanCo.com

CRANOR ADDITION
 PHASE I

LINE 10

SANITARY SEWER IMPROVEMENTS
 PROJECT NUMBER:

DESIGN: DMV DRAWN: JAK
 DATE: Sep. 13, 2024

SHEET **20** OF **35**

File: E:\Projects\Cranor Addition\Kelsey 119th_22-04-P768\Engineering\Phase 1\SS_23-03-03-E467.dwg