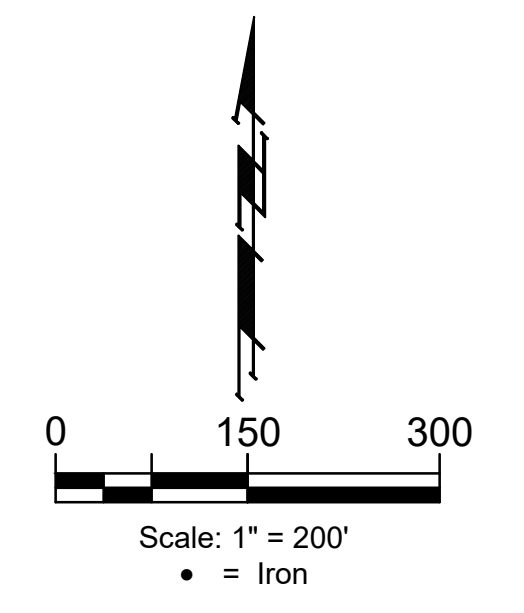


**BENCHMARKS:**  
 Square cut top of the south end of the east RCP 114.5'± north and 34.7'± east of the SW Cor., NW1/4, Sec. 31, Twp. 26-S, R-1-W. Elev. = 1358.12 NAVD88

"±" cut top of the east end of RCBC, 589.6'± north and 24.6'± east of the SW Cor., NW1/4, Sec. 31, Twp. 26-S, R-1-W. Elev. = 1359.71 NAVD88

EROSION CONTROL MEASURE	INSTALL	MAINTAIN
CONSTRUCTION ENTRANCE (EA)	0	2

\* ALL EXISTING BMPs INCLUDING CONSTRUCTION ENTRANCE, SEDIMENT BARRIERS, SILT FENCE, CUT-OFF TRENCH, AND EROSION CONTROL MAT SHALL BE MAINTAINED AND REPAIRED IF NECESSARY.

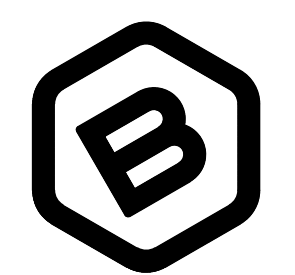
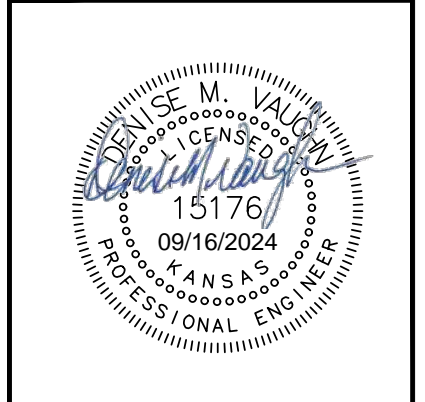
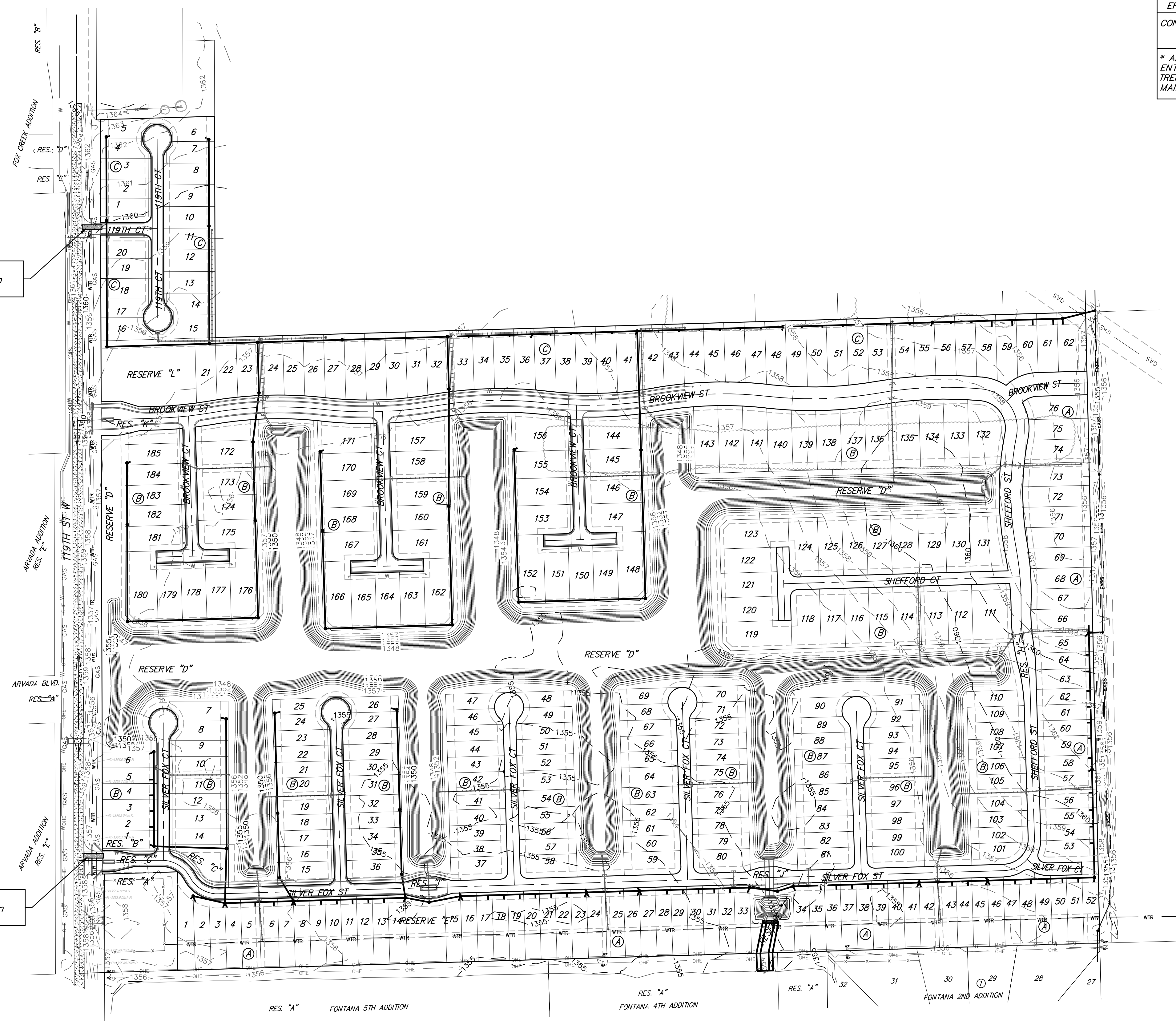


Existing Ground ——— 1364 ———

- NOTES:**
- Contractor shall make sure all erosion control is in place before project is accepted. This plan represents the minimum standard. Any additional erosion control measures shall be installed by the Contractor as needed.
  - All areas disturbed during construction shall be seeded per Cover Sheet General Notes.

Maintain 50'x12' Gravel Construction Entrance.

Maintain 50'x12' Gravel Construction Entrance.



**BAUGHMAN COMPANY**  
 315 Ellis St.  
 Wichita, KS 67211  
 316-262-7271  
 BaughmanCo.com

CRANOR ADDITION  
 PHASE I

**EROSION CONTROL**

SANITARY SEWER IMPROVEMENTS  
 PROJECT NUMBER:

DESIGN: DMV DRAWN: JAK

DATE: Sep. 13, 2024

SHEET OF  
**21 35**

File: E:\Projects\Cranor Addition\Kelsey 119th\22-04-P768\Engineering\Phase 1\SS\_23-03-E467.dwg