

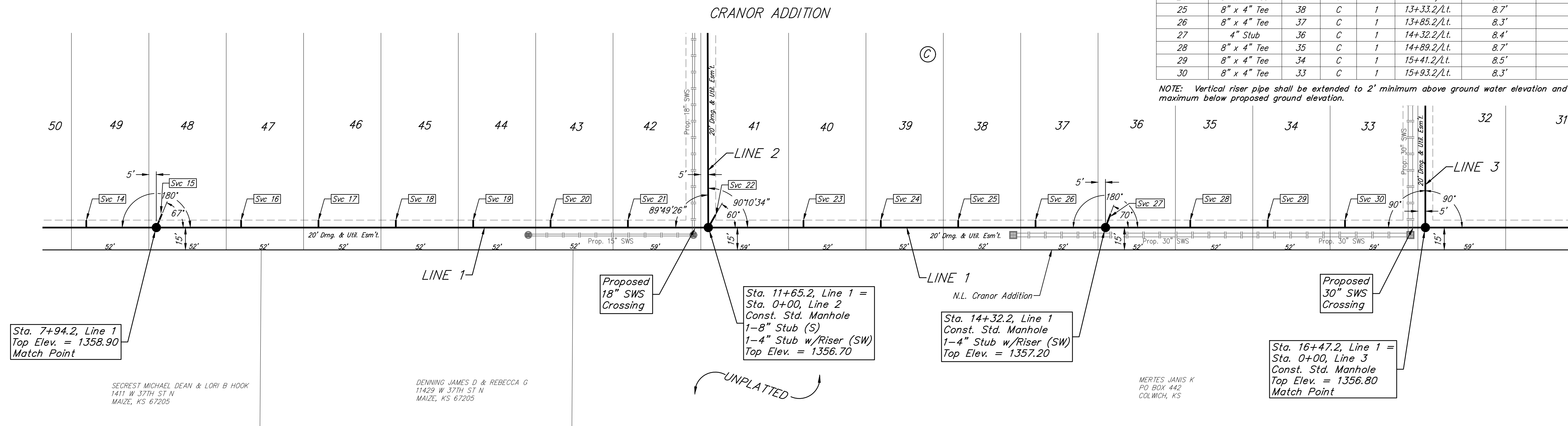
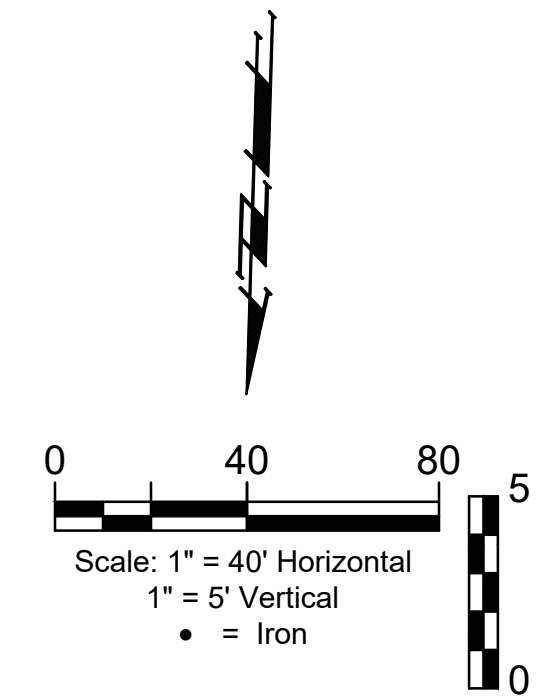
BENCHMARKS:
 Square cut top of the south end of the east RCP 114.5'± north and 34.7'± east of the SW Cor., NW1/4, Sec. 31, Twp. 26-S, R-1-W. Elev. = 1358.12 NAVD88

"+" cut top of the east end of RCBC, 589.6'± north and 24.6'± east of the SW Cor., NW1/4, Sec. 31, Twp. 26-S, R-1-W. Elev. = 1359.71 NAVD88

SEWER SERVICE TABLE

NUMBER	TYPE	LOCATION				FOR INFORMATION ONLY	
		LOT NO.	BLOCK NO.	LINE NO.	STATION/DIRECTION	APPROXIMATE LENGTH 4" PIPE VERTICAL	HORIZONTAL
16	8" x 4" Tee	47	C	1	8+51.2/Lt.	12.1'	5'
17	8" x 4" Tee	46	C	1	9+03.2/Lt.	11.4'	5'
18	8" x 4" Tee	45	C	1	9+55.2/Lt.	10.6'	5'
19	8" x 4" Tee	44	C	1	10+07.2/Lt.	9.8'	5'
20	8" x 4" Tee	43	C	1	10+59.2/Lt.	9.4'	5'
21	8" x 4" Tee	42	C	1	11+11.2/Lt.	9.5'	5'
22	4" Stub	41	C	1	11+65.2/Lt.	8.9'	10'
23	8" x 4" Tee	40	C	1	12+29.2/Lt.	9.3'	5'
24	8" x 4" Tee	39	C	1	12+81.2/Lt.	9.4'	5'
25	8" x 4" Tee	38	C	1	13+33.2/Lt.	8.7'	5'
26	8" x 4" Tee	37	C	1	13+85.2/Lt.	8.3'	5'
27	4" Stub	36	C	1	14+32.2/Lt.	8.4'	10'
28	8" x 4" Tee	35	C	1	14+89.2/Lt.	8.7'	5'
29	8" x 4" Tee	34	C	1	15+41.2/Lt.	8.5'	5'
30	8" x 4" Tee	33	C	1	15+93.2/Lt.	8.3'	5'

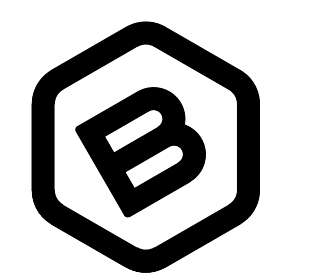
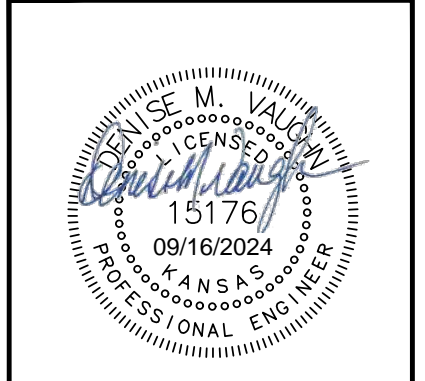
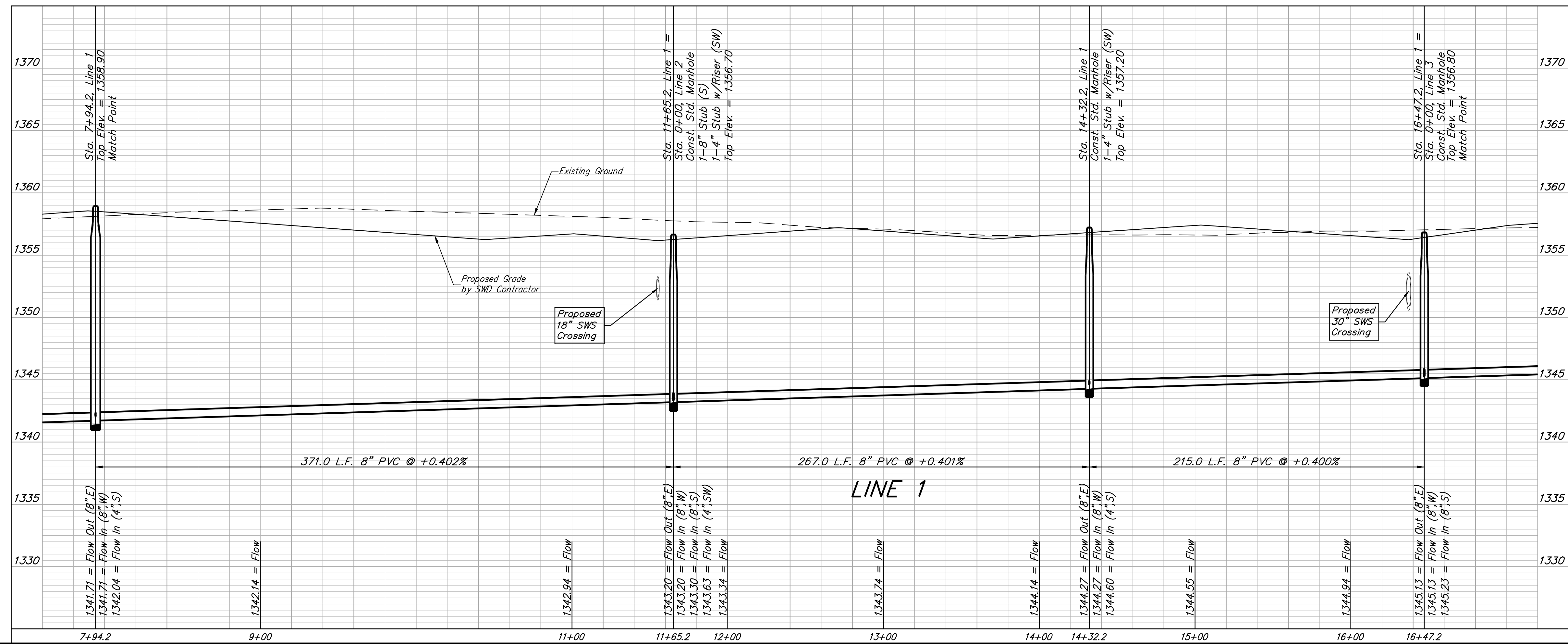
NOTE: Vertical riser pipe shall be extended to 2' minimum above ground water elevation and 4' maximum below proposed ground elevation.



SECRET MICHAEL DEAN & LORI B HOOK
 1411 W 37TH ST N
 MAIZE, KS 67205

DENNING JAMES D & REBECCA G
 11429 W 37TH ST N
 MAIZE, KS 67205

MERTES JANIS K
 PO BOX 442
 COLWICH, KS



BAUGHMAN COMPANY
 315 Ellis St.
 Wichita, KS 67211
 316-262-7271
 BaughmanCo.com

CRANOR ADDITION
 PHASE I

LINE 1

SANITARY SEWER IMPROVEMENTS

PROJECT NUMBER:

DESIGN: DMV DRAWN: JAK

DATE: Sep. 13, 2024

SHEET **3** OF **35**

File: E:\Projects\Cranor Addition\Kelsey 119th_22-04-P768\Engineering\Phase 1\SS_23-03-03-E467.dwg