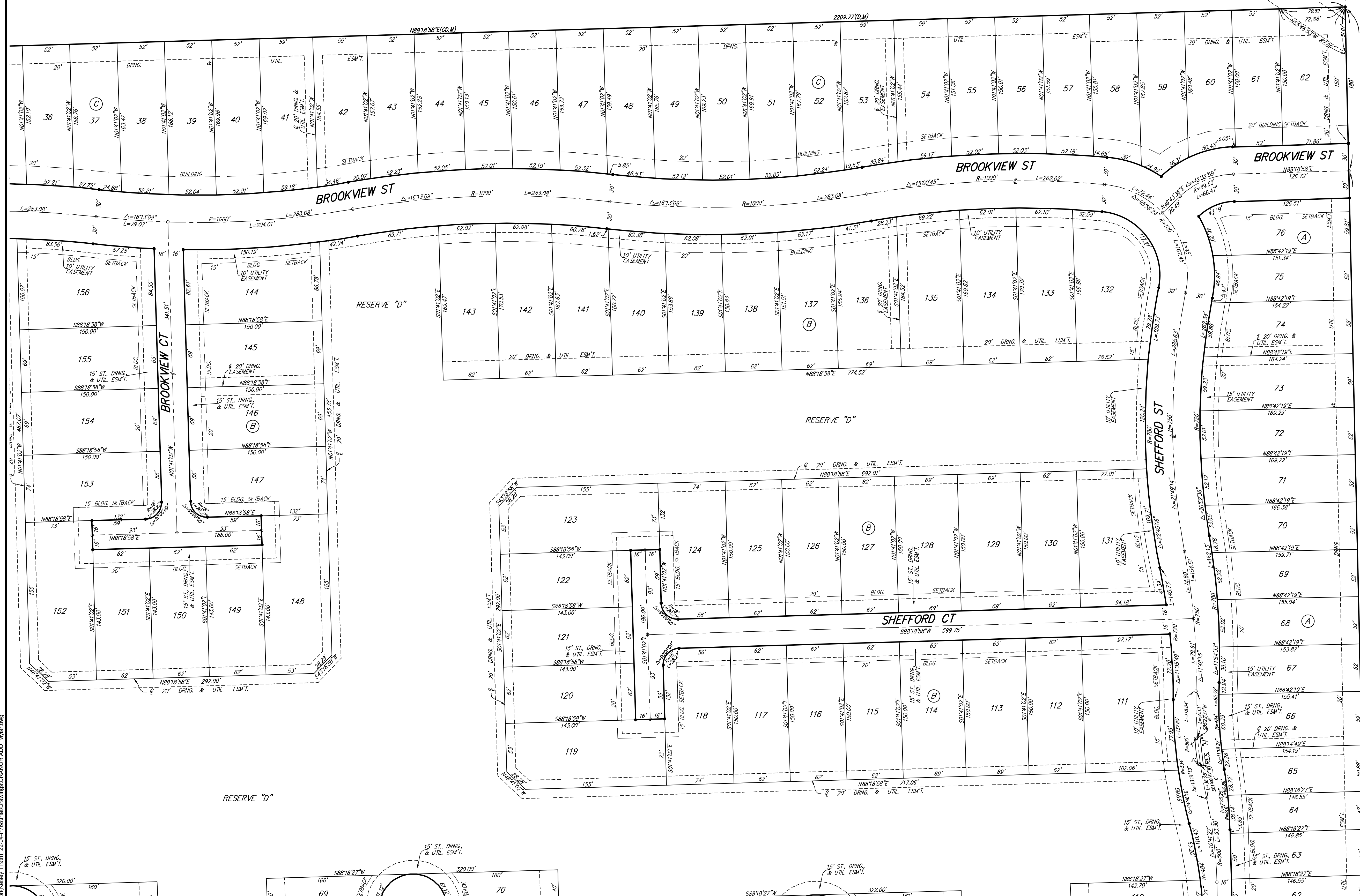


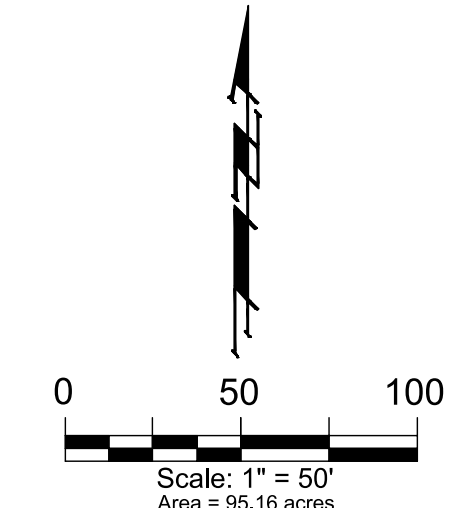
# CRANOR ADDITION MAIZE, SEDGWICK COUNTY, KANSAS

© 60' ARKANSAS LOUISIANA GAS COMPANY  
PARTIAL RELEASE OF PIPELINE RIGHT-OF-WAY  
(FILM 732, PAGE 953), NOW ASSIGNED TO BLACK  
HILLS/KANSAS GAS UTILITY COMPANY, LLC  
(DOC #FILM-732-291123749)  
RECORDED EASEMENT P.O.B IS 1035.52 SOUTH OF  
NE COR. OF NW1/4. THE P.O.B. IS MORE LIKELY  
TO BE 1053.52 FEET SOUTH OF NE COR. OF  
NW1/4, BASED ON FIELD OBSERVATION.

NE COR. NW1/4, SEC. 31,  
TWP. 26-S, R-1-W



FOR REFERENCE ONLY  
NOT TO SCALE



- = #4 REBAR W/ "BAUGHMAN" CAP (SET)
  - = #5 REBAR IN TRIMBLE (FOUND)
  - = #4 REBAR W/ "SAVOY" CAP (FOUND)
  - = #4 REBAR W/ ALLEGIBLE YELLOW CAP (FOUND)
  - ⊗ = BENCHMARK
- (M) = MEASURED  
(D) = DESCRIBED  
(CM) = CALCULATED FROM MEASURED INFO.  
(CD) = CALCULATED FROM DESCRIBED INFO.  
(CP) = CALCULATED FROM PLATTED INFO.

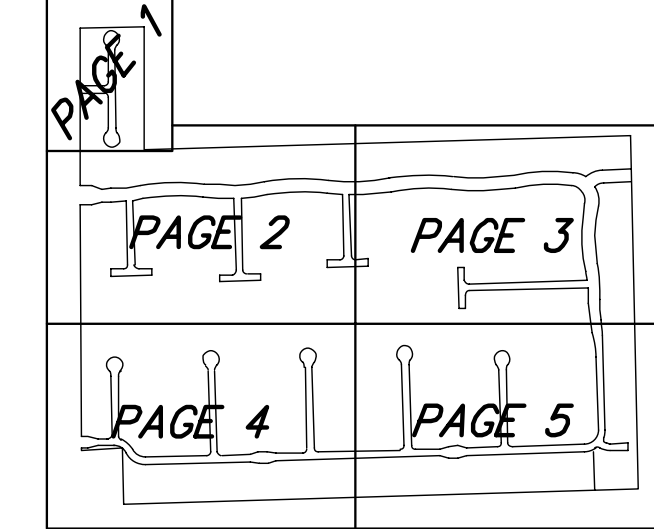
**BUILDING SETBACK NOTE:**  
ALL LOTS WITHIN CRANOR ADDITION SHALL HAVE A 5 FOOT SIDE YARD BUILDING SETBACK.

**BENCHMARKS:**  
SQUARE CUT TOP OF THE SOUTH END OF THE EAST RCP, 114.5' NORTH AND 34.7' EAST OF THE SW COR., NW1/4, SEC. 31, TWP. 26-S, R-1-W. ELEV. = 1358.12 NAVD88

PLUS CUT TOP OF THE EAST END OF RCP, 58.6' NORTH AND 24.6' EAST OF THE SW COR., NW1/4, SEC. 31, TWP. 26-S, R-1-W. ELEV. = 1359.71 NAVD88

LOT	BLOCK	ELEVATION NAVD88
1-36	A	1358.5
6-185	B	1358.0

**NOTE:**  
A DRAINAGE PLAN HAS BEEN DEVELOPED FOR THIS SUBDIVISION AND IS ON FILE WITH THE CITY OF MAIZE, KANSAS. DRAINAGE INTENT SHALL REMAIN AS DESCRIBED OR AS MODIFIED WITH THE APPROVAL OF THE CITY ENGINEER OF THE CITY OF MAIZE, KANSAS. NO OBSTRUCTIONS WHICH IMPEDE THE FLOW OF THIS DRAINAGE PLAN SHALL BE ALLOWED.



SHEET LOCATION

CRANOR ADDITION

PAGE 3 OF 5



**BAUGHMAN COMPANY**  
315 Ellis St. Wichita, KS 67211 316-262-7271  
BaughmanCo.com

E:\Projects\Cranor Addition\119th\_22-04-PT88\PlanDrawings\CRANOR\_ADD\_Mylar.dwg