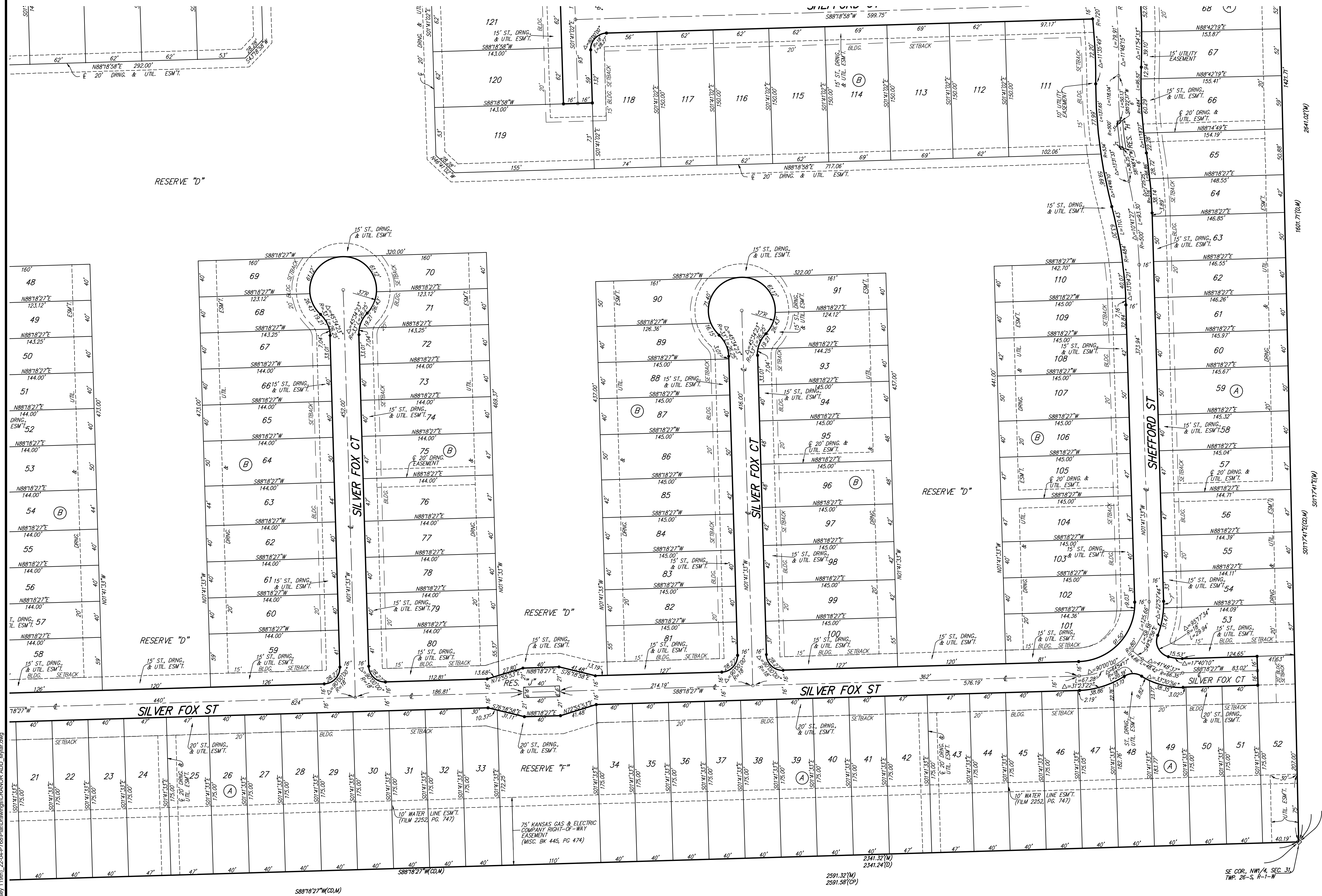
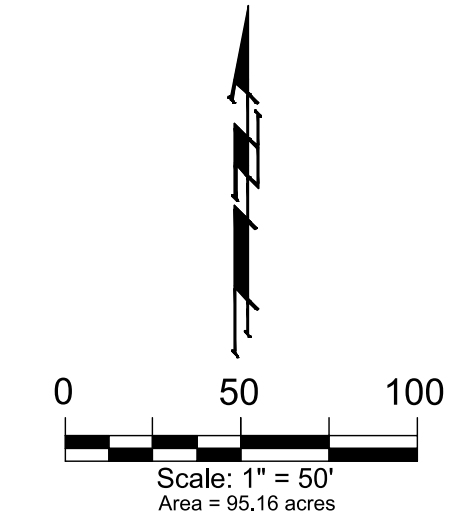


CRANOR ADDITION

MAIZE, SEDGWICK COUNTY, KANSAS



FOR REFERENCE ONLY
NOT TO SCALE



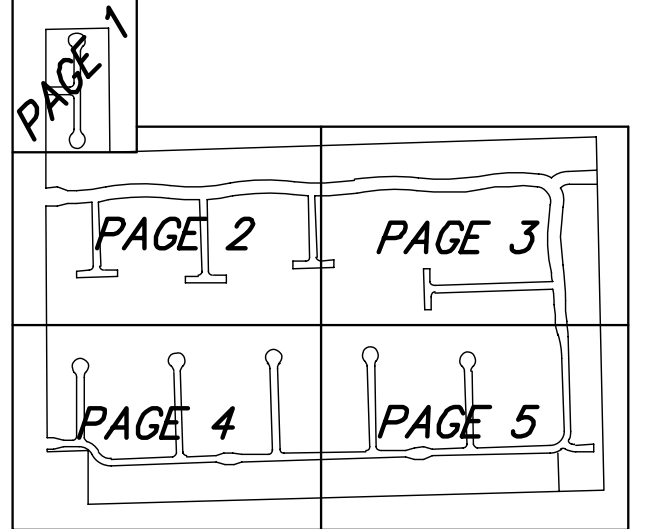
- = #4 REBAR W/ "BAUGHMAN" CAP (SET)
- = #3 REBAR IN THIMBLE (FOUND)
- = #4 REBAR W/ "SAVOY" CAP (FOUND)
- ◇ = #4 REBAR W/ ILLEGIBLE YELLOW CAP (FOUND)
- ⊗ = BENCHMARK
- (M) = MEASURED
- (D) = DESCRIBED
- (CM) = CALCULATED FROM MEASURED INFO.
- (CD) = CALCULATED FROM DESCRIBED INFO.
- (CP) = CALCULATED FROM PLATTED INFO.

BUILDING SETBACK NOTE:
ALL LOTS WITHIN CRANOR ADDITION SHALL HAVE A 5 FOOT SIDE YARD BUILDING SETBACK.

BENCHMARKS:
SQUARE CUT TOP OF THE SOUTH END OF THE EAST ROP, 114.5'± NORTH AND 34.7'± EAST OF THE SW COR., NW1/4, SEC. 31, TWP. 26-S, R-1-W. ELEV. = 1358.12 NAVD88
PLUS CUT TOP OF THE EAST END OF RCBC, 589.6'± NORTH AND 24.6'± EAST OF THE SW COR., NW1/4, SEC. 31, TWP. 26-S, R-1-W. ELEV. = 1359.71 NAVD88

MINIMUM BUILDING PAD ELEVATIONS FOR LOWEST OPENING TO THE STRUCTURES		
LOT	BLOCK	ELEVATION NAVD88
1-36	A	1358.5
6-185	B	1359.0

NOTE:
A DRAINAGE PLAN HAS BEEN DEVELOPED FOR THIS SUBDIVISION AND IS ON FILE WITH THE CITY OF MAIZE, KANSAS. DRAINAGE INTENT SHALL REMAIN AS DEPICTED OR AS MODIFIED WITH THE APPROVAL OF THE CITY ENGINEER OF THE CITY OF MAIZE, KANSAS. NO OBSTRUCTIONS WHICH IMPEDE THE FLOW OF THIS DRAINAGE PLAN SHALL BE ALLOWED.



SHEET LOCATION

CRANOR ADDITION

PAGE 5 OF 5



BAUGHMAN COMPANY
315 Ellis St. Wichita, KS 67211 316-262-7271
BaughmanCo.com

E:\Projects\Cranor Addition\Drawings\Cranor ADD_Mylar.dwg