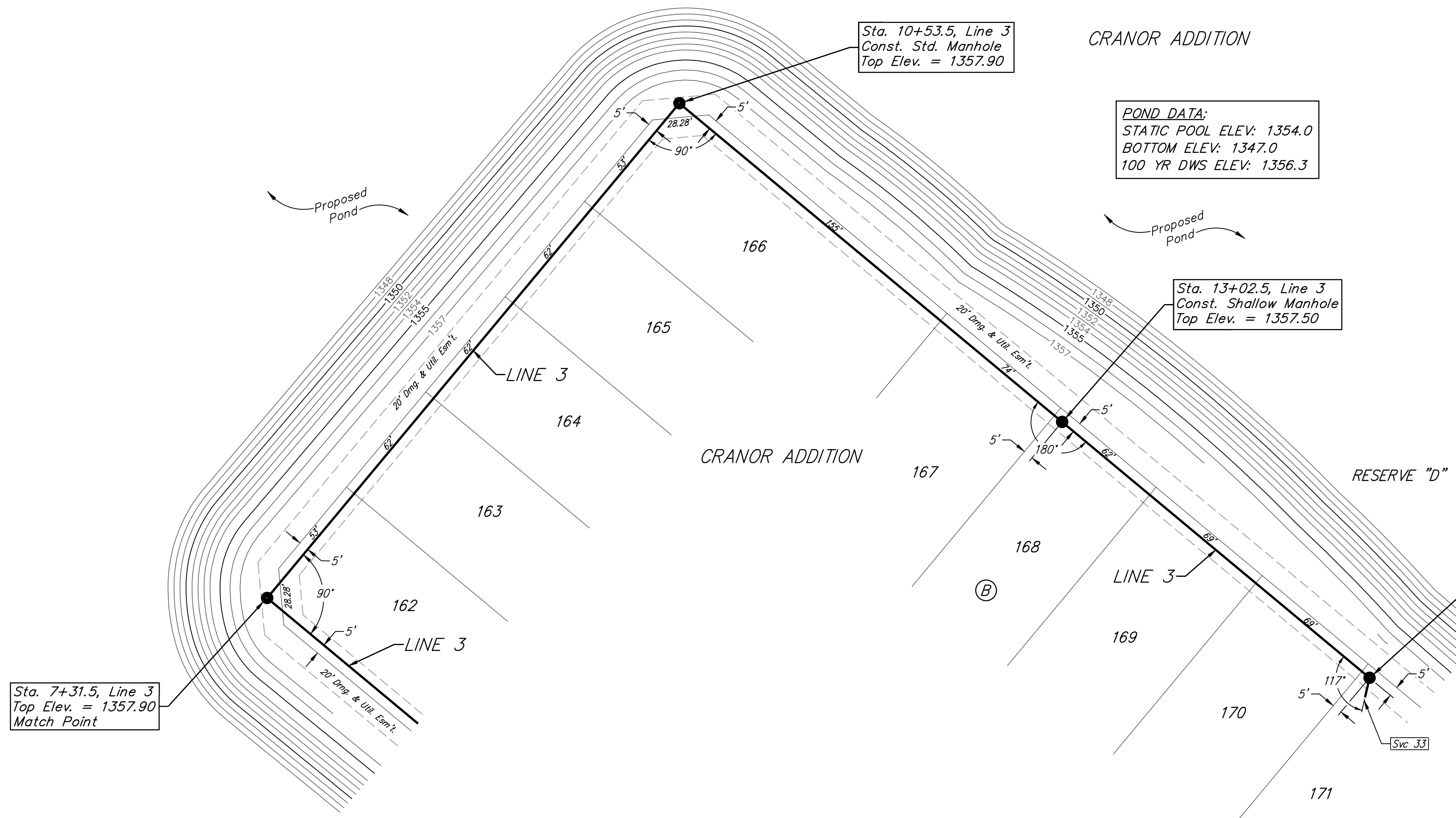
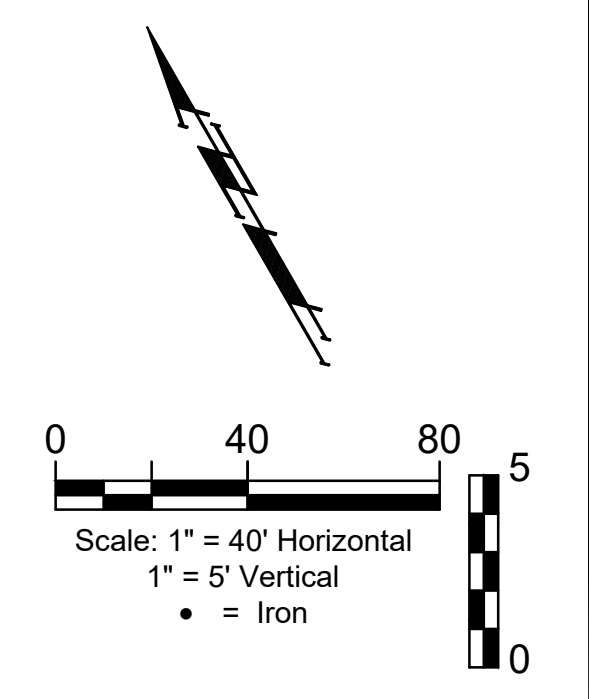


**BENCHMARKS:**  
 Square cut top of the south end of the east RCP 114.5'± north and 34.7'± east of the SW Cor., NW1/4, Sec. 31, Twp. 26-S, R-1-W. Elev. = 1358.12 NAVD88  
 "+ cut top of the east end of RCBC, 589.6'± north and 24.6'± east of the SW Cor., NW1/4, Sec. 31, Twp. 26-S, R-1-W. Elev. = 1359.71 NAVD88



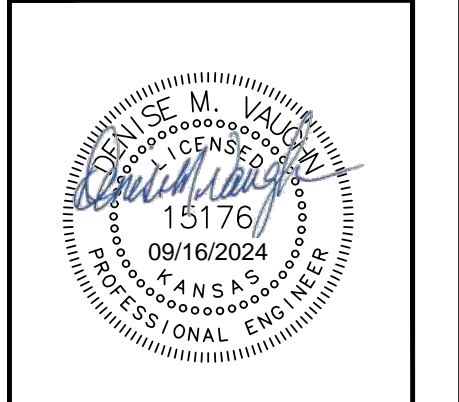
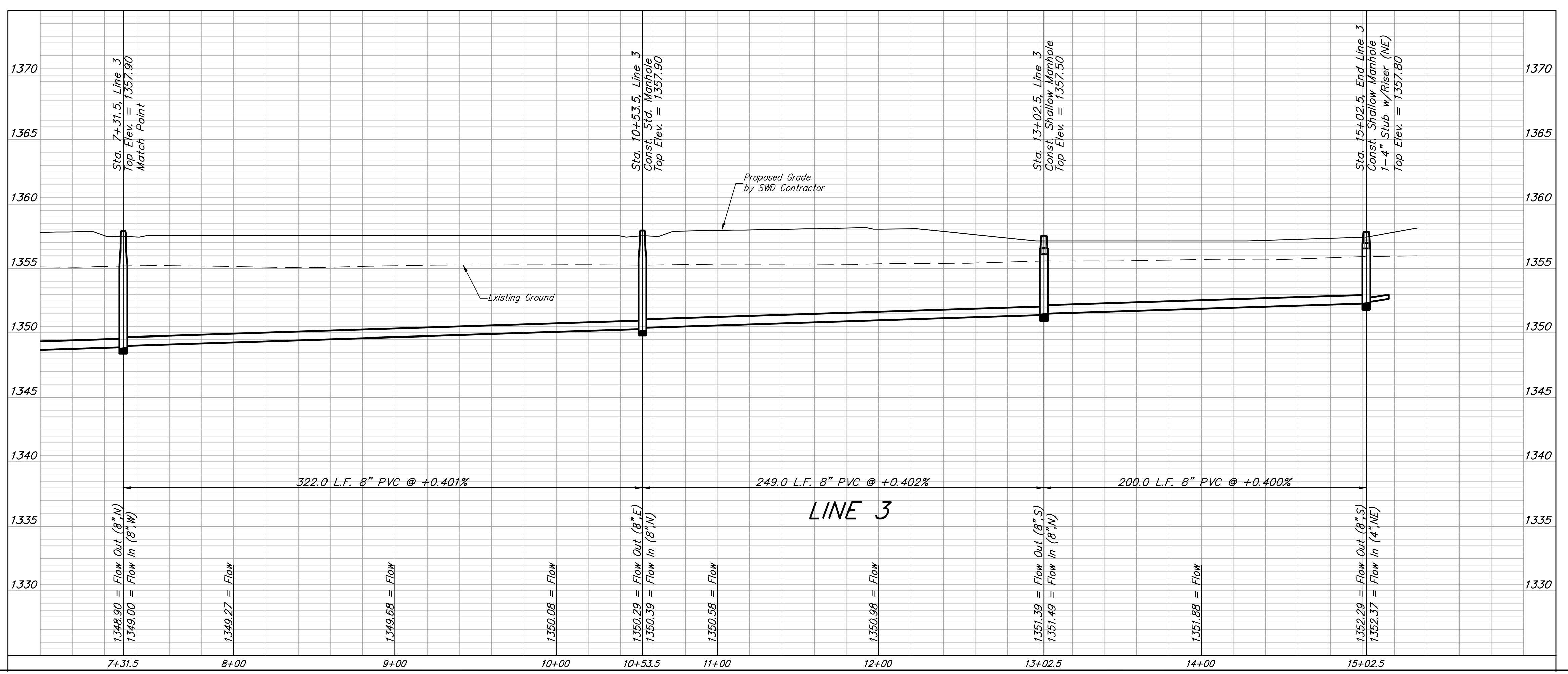
**POND DATA:**  
 STATIC POOL ELEV: 1354.0  
 BOTTOM ELEV: 1347.0  
 100 YR DWS ELEV: 1356.3



**SEWER SERVICE TABLE**

NUMBER	TYPE	LOCATION			FOR INFORMATION ONLY	
		LOT NO.	BLOCK NO.	LINE NO. STATION/DIRECTION	APPROXIMATE LENGTH 4" PIPE	
					VERTICAL	HORIZONTAL
33	4" Stub	171	B	3 15+02.5/Rt.	1.5'	10'

NOTE: Vertical riser pipe shall be extended to 2' minimum above ground water elevation and 4' maximum below proposed ground elevation.



**BAUGHMAN COMPANY**  
 315 Ellis St.  
 Wichita, KS 67211  
 316-262-7271  
 BaughmanCo.com

CRANOR ADDITION  
 PHASE I  
**LINE 3**  
 SANITARY SEWER IMPROVEMENTS  
 PROJECT NUMBER:  
 DESIGN: DMV DRAWN: JAK  
 DATE: Sep. 13, 2024  
 SHEET **9** OF **35**

File: E:\Projects\Cranor Addition\Kelsey 119th\22-04-P768\Engineering\Phase 1\SS\_23-03-03-E467.dwg