

# GENERAL NOTES

- The Contractor shall comply with all applicable safety regulations. All construction shall be completed following current City Standard Specifications and Special Provisions.
- Contractor will be required to provide notice to utility companies a minimum of seventy-two (72) hours prior to any excavation, as follows:  
 Kansas One-Call 687-2470  
 The Contractor must notify the following in case of an emergency:  
 AT&T 1-800-246-8464  
 Black Hills Energy 1-800-694-8989  
 City of Wichita Water & Sewer 1-316-219-8921  
 City of Wichita Stormwater 1-316-268-4090  
 City of Wichita Traffic 1-316-268-4034  
 Cox Communications 1-888-249-3530  
 Kansas Gas Service 1-888-482-4950  
 Evergy 1-800-544-4857
- Utility service lines, poles, etc. are to be adjusted as necessary by others prior to construction unless the plans specifically call for their adjustment by the Contractor or unless the plans specifically identify a utility to be adjusted by its owner during construction. Existing utilities and their location, as shown on the plans, represent the best information obtainable for design. The Contractor will be required to work around existing utilities within the right-of-way which do not conflict with proposed construction.
- Rubble from the removal of miscellaneous structures and excess excavation which is to be wasted shall be disposed of on sites to be provided by the Contractor. These sites shall be approved by the Engineer as to suitability, appearance and site location. Locations, in the opinion of the Engineer, that will leave an unsightly appearance will not be approved. All disposal sites must be approved by the Kansas Department of Health and Environment. Material either stockpiled or disposed of in a flood plain will require a Kansas State Board of Agriculture permit. Any material dumped in waters of the United States or wetlands is subject to U.S. Corps. of Engineers permitting regulations. Any material buried or stockpiled beyond approved construction limits will require additional archaeological investigations unless buried in a previously approved borrow location.
- Trees and shrubs in public right-of-way which are in direct conflict with proposed new construction shall be removed by the Contractor with the City Engineer's approval. Trees and shrubs which are not in direct conflict with proposed new construction shall be saved and protected from damage.
- The Contractor shall give all property owners and/or tenants of developed property abutting the construction of this project a minimum of ten (10) days notice prior to start of construction.
- The Contractor shall be responsible for preserving property irons. The Contractor will be required to re-establish any property irons which are damaged or destroyed by his construction operations. Such irons shall be re-established by a licensed land surveyor in accordance with state laws.
- The Engineering Division shall field locate water valves one time during construction when requested by the Contractor. It shall be the Contractor's responsibility to preserve such field locations during the construction process. Water valves, valve boxes or fire hydrants damaged during construction shall be repaired by Contractor at his own expense. Valve boxes and water meters within the project limits shall be adjusted to match final grades by the contractor.
- The Contractor shall notify the inspecting engineer and Dawnita Reinhardt at 316-268-4574 with the City of Wichita with the anticipated construction start date and notify them of project completion. Staking and inspection for this project will be the responsibility of the Contractor.
- If traffic will be impacted by construction, a traffic control plan must be submitted and approved by the City Traffic Engineer, Mike Armour at [traffic@wichita.gov](mailto:traffic@wichita.gov) before construction can begin. The Contractor shall be responsible for all traffic control measures to facilitate construction. All construction zone markings and signage shall conform to the latest version of the Manual on Uniform Traffic Control Devices (MUTCD) as published by the US Dept. of Transportation, Federal Highway Administration. All costs associated with construction markings and signage shall be the Contractors responsibility.
- All elevations shown are NAVD 88.
- All areas disturbed during construction that will not be under proposed pavement shall be restored to match existing conditions.
- Any sidewalk, drive approach, or street pavement removed to construct project must have a pavement cut permit and be replaced by the City contractor. Permits can be obtained by calling 316-268-4501 or 316-268-4480.
- All applicable fees (tap, equity, in lieu of & main benefit) must be paid before any connections can be made on this project. Quotes can be obtained on fees by calling 316-268-4641.
- City Maintenance of sanitary sewer mains ends at last structure within the easement or right-of-way.
- All stubs and capped pipes shall be located with green plastic tape in the same manner as risers.
- Connecting to Existing Manholes:  
 Prior to laying sewer lines using existing stubs in existing manholes, the Contractor shall expose and verify the elevation, grade and alignment of existing stubs and notify the Engineer of any deviation from the plans. Where the stub is unusable due to elevation grade or alignment, the Contractor shall remove the stub and plug the hole, and reshape the existing manhole invert to provide smooth flow. Where connecting to an existing manhole that does not have an existing stub, the Contractor shall core cut into existing manhole wall to make connection using approved water stop gasket, and reshape the existing manhole invert to provide smooth flow. The cost to connecting to existing manholes is incidental to the project.
- Contractor shall limit the extent of trench openings overnight and weekends to less than 50 feet.
- Contractor shall provide positive drainage away from all manhole covers.
- The Contractor shall prevent any construction debris from entering the existing sanitary sewer during construction.
- The Contractor shall be responsible for maintaining continuous flow of sewage through construction. Contractors proposed method for maintaining sewage flow shall be submitted and approved by the Sewer Maintenance Division (316-268-4073) prior to starting and by-passing of sewage flows.
- Any over excavation from manhole and pipe removal shall be backfilled with AB-3 compacted to 90-95% ASTM D698.
- The Contractor shall protect from damage and support existing utilities through construction as approved by the utility owner and the Engineer at the contractors expense.

Utility Contractor: Nowak Construction.  
 Construction Staking: Baughman Co.  
 Inspection By: Baughman Company, P.A.  
 Inspectors: James Ralston, Beau Gibler,  
 Larry Powell.  
 As-Built Plans By: Larry Powell & J. Ralston  
 8-15-2024

# SANITARY SEWER to serve

# AS-BUILT PLANS

# LOWE'S ADDITION

333 SOUTH RIDGE ROAD

CITY OF WICHITA, KANSAS

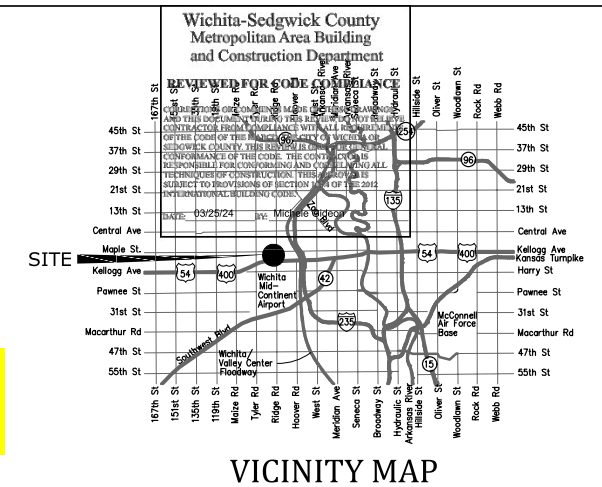
Paul Gunzelman P.E. City Engineer

Project Number

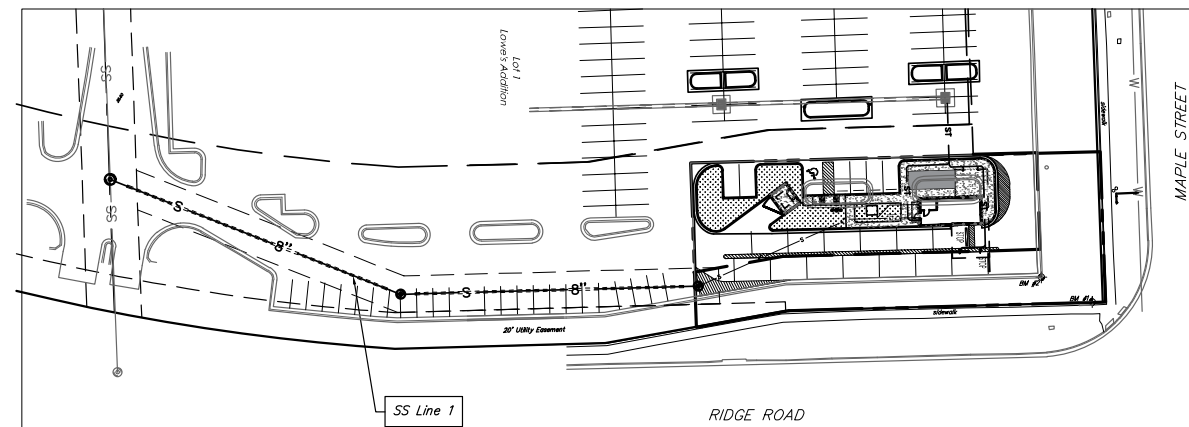
2023-031912 PPS (53030982)

Baughman Co. Job #: 24-07-E839

D. Reinhardt - City of Wichita, Inspector  
 Release Date: 9/25/2024  
 apr 10/17/2024



BEGIN: 7-29-2024  
 END: 8-8-2024



## CONTROL

BM #1 - Datum BM:  
 Chiseled "I" at the Southwest Corner of the intersection of Ridge Rd. and Maple, on the NE corner of a concrete box for a junction box.  
 Elev. = 1329.57 NAVD 88

BM #2 - Site BM:  
 Chiseled Square on the Back of Curb at the Northeast Corner of the Lowe's Parking Lot where the Curb 90'.  
 Elev. = 1329.35 NAVD 88

Horizontal Control:  
 Kansas State Plane Coordinate System-South Zone Coordinates.

Structures = Wichita Concrete Pipe.  
 Frames & Lids = Deeter  
 8" PVC Pipe = Diamond

## LEGAL DESCRIPTION

A portion of Lot 1, LOWE'S ADDITION, Wichita, Sedgwick County, Kansas, according to the plat thereof recorded in Plat Drawer PC80-1, described as beginning at the Northeast corner of said Lot 1; thence South 00 Degrees 31 Minutes 00 Seconds West along the East line of said Lot 1, a distance of 175.00 Feet; thence continuing along the East line of said Lot 1 South 08 Degrees 01 Minutes 30 Seconds East, a distance of 51.50 Feet; thence North 90 Degrees 00 Minutes 00 Seconds West, a distance of 90.65 Feet; thence North 00 Degrees 31 Minutes 00 Seconds East; a distance of 226.00 Feet to a point on the North line of said Lot 1; thence North 90 Degrees 00 Minutes 00 Seconds East along the North line of said Lot 1, a distance of 83.00 Feet to the Point of Beginning. Said parcel contains 18,952.30 square feet.

OCTOBER 2023

PREPARED BY



CIVIL ENGINEERS | LAND SURVEYORS | LANDSCAPE ARCHITECTS

800 EAST 1st ST., STE 240 | WICHITA, KANSAS | P. 316.722.4472

SE Project No: 22.W027

## SHEET INDEX

- 1 | TITLE SHEET
- 2 | SITE/GRADING PLAN
- 3 | PLAN & PROFILE
- 4 | EROSION CONTROL PLAN
- 5 | COPY OF PLAT / LOT SPLIT
- 6 | DETAILS/SPEC/EROSION CONTROL

(available on the City's Website)  
<https://www.wichita.gov/618/Construction-Details>

APPROVED AS NOTED  
 BY WICHITA PUBLIC WORKS  
 ENGINEERING DIVISION

Engineering Shawn Mellies 3/20/2024

Utilities Scott Macey 3/20/2024

NOTE TO CONTRACTORS

Inspection and testing for this project is to be provided by a Licensed Consulting Engineering Firm under contract with the Owner/Developer. Said inspection to be in accordance with the City of Wichita standard construction engineering practices and certified by a Licensed Professional Engineer in the state of Kansas. No work shall be performed by the Contractor without such inspection nor shall any work be commenced without written authorization by City Engineering. All Construction and Materials shall comply with the current City of Wichita Specifications and Standards and Special Provisions. (on file and available at Wichita.gov).

An approved copy of these plans signed by City staff are required on-site.

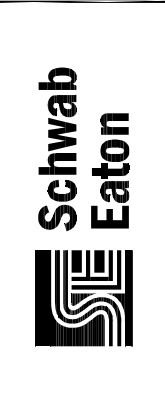


Wichita-Sedgwick County  
Metropolitan Area Building  
and Construction Department

REVIEWED FOR CODE COMPLIANCE

CONTRACTOR OR COMMENTS MADE ON THESE DRAWINGS AND THIS DOCUMENT DURING THIS REVIEW DO NOT RELIEVE THE CONTRACTOR FROM COMPLIANCE WITH ALL REQUIREMENTS OF THE CODE OF THE MATRICK, THE CITY OF WICHITA OR SEDGWICK COUNTY. THIS REVIEW IS ONLY FOR GENERAL CONFORMANCE OF THE CODE. THE CONTRACTOR IS RESPONSIBLE FOR CONFORMING AND CORRECTING ALL TECHNICALS OF CONSTRUCTION. THIS APPROVAL IS SUBJECT TO PROVISIONS OF SECTION 10.4 OF THE 2022 INTERNATIONAL BUILDING CODE.

DATE: 03/25/24 BY: Michele Gideon



SANITARY SEWER IMPROVEMENT  
to serve  
LOWE'S ADDITION  
2023- PPS (184011)

Revisions:

Date:  
October 2023

SE Project No:  
22.W027

Drawn By:  
MWS

Checked By:  
MWS

Sheet Name:  
SS Plan / Profiles

Sheet No:  
**03**



**COW ID #: 4946-264**

SS Line 1 Sta. 0+00, Begin Line 1  
Construct Dog House Manhole (5' Dia.)  
over exist. 12" PVC Pipe with Outside  
Drop.

CLAY

N: 1682439.57, E: 1623006.56  
Top = 1325.88 (Match)  
E in (NE) = 1319.55 (8" PVC)  
E in (NE) = 1309.77 (8" PVC)  
E out (E) = 1309.43± (Ex. 12" PVC)  
E in (W) = 1309.43± (Ex. 12" PVC)

Sta. 0+00 Doghouse Manhole  
Rim Elev = 1325.88  
N: 1,682,439.47 E: 1,623,002.46  
Flow-In (NE) = 1309.76  
Flow-In (NE) = 1319.54

**Site Work Development**

Refer to Sheet 02 in PPS Plan Set  
for reference to all site work.

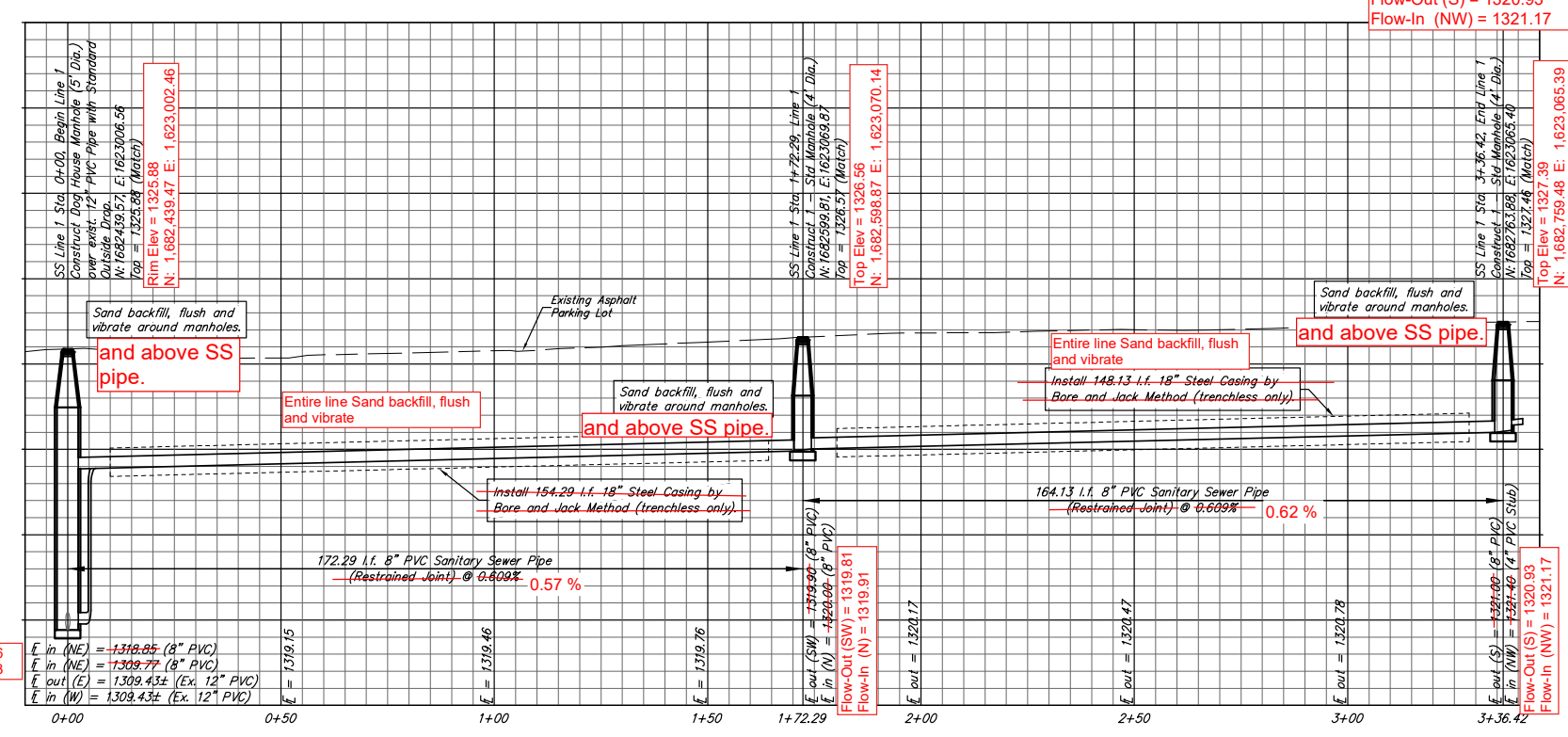
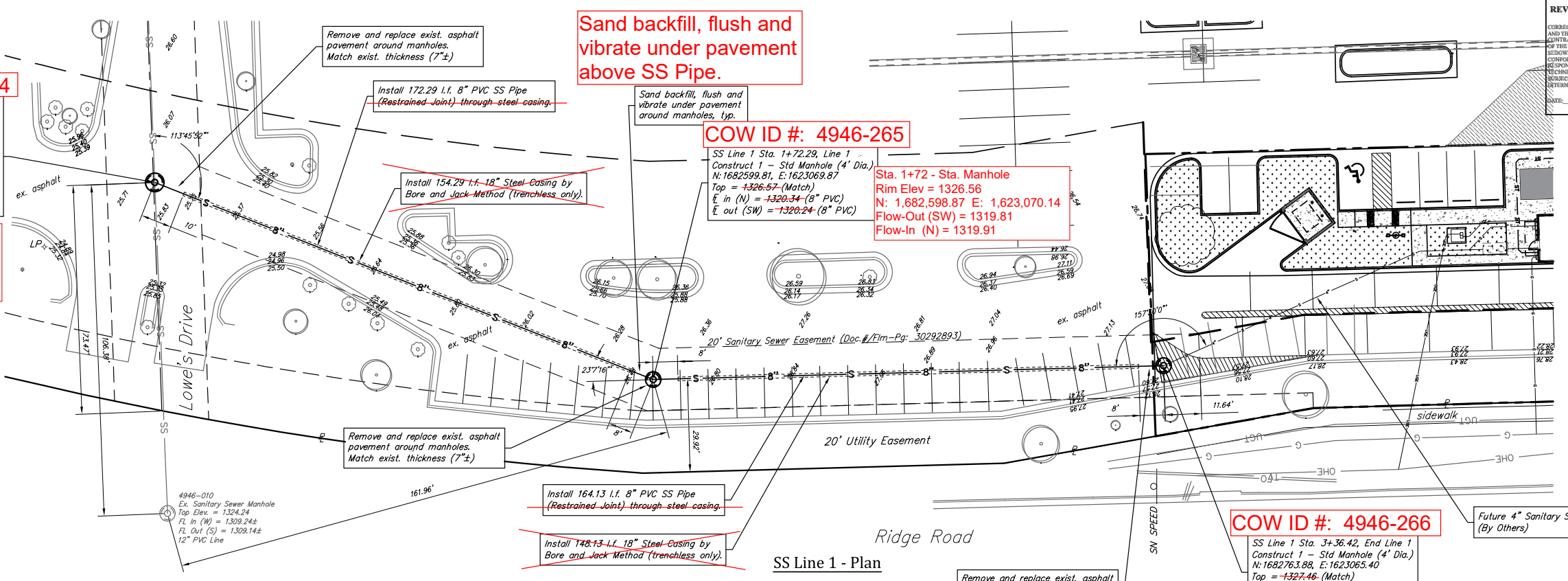
**CONTROL**

BM #1 - Datum BM.  
Chiseled "□" at the Southwest Corner of the intersection  
of Ridge Rd. and Maple, on the NE corner of a concrete  
box for a junction box.  
Elev. = 1329.57 NAVD 88

BM #2 - Site BM.  
Chiseled Square on the Back of Curb at the Northeast  
Corner of the Lowe's Parking Lot where the Curb 90'.  
Elev. = 1329.35 NAVD 88

Horizontal Control:  
Kansas State Plane Coordinate System-South Zone  
Coordinates.

**NORTHINGS (N) AND EASTINGS (E):  
STATE PLANE COORDINATES - KANSAS GRID SOUTH - NAD83.  
ELEVATIONS: NAVD88  
SURVEY SHOTS BY: JAMES RALSTON - BAUGHMAN COMPANY, P.A.**



Flow-In (NE) = 1309.76  
Flow-In (NE) = 1318.83

Flow-Out (SW) = 1319.81  
Flow-In (N) = 1319.91

Flow-Out (S) = 1320.93  
Flow-In (NW) = 1321.17