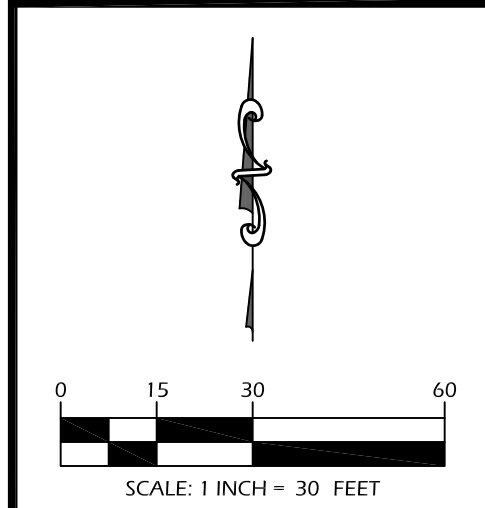


**JACKSON HEIGHTS TOWNHOMES**  
**2ND ADDITION**  
 WICHITA, KANSAS

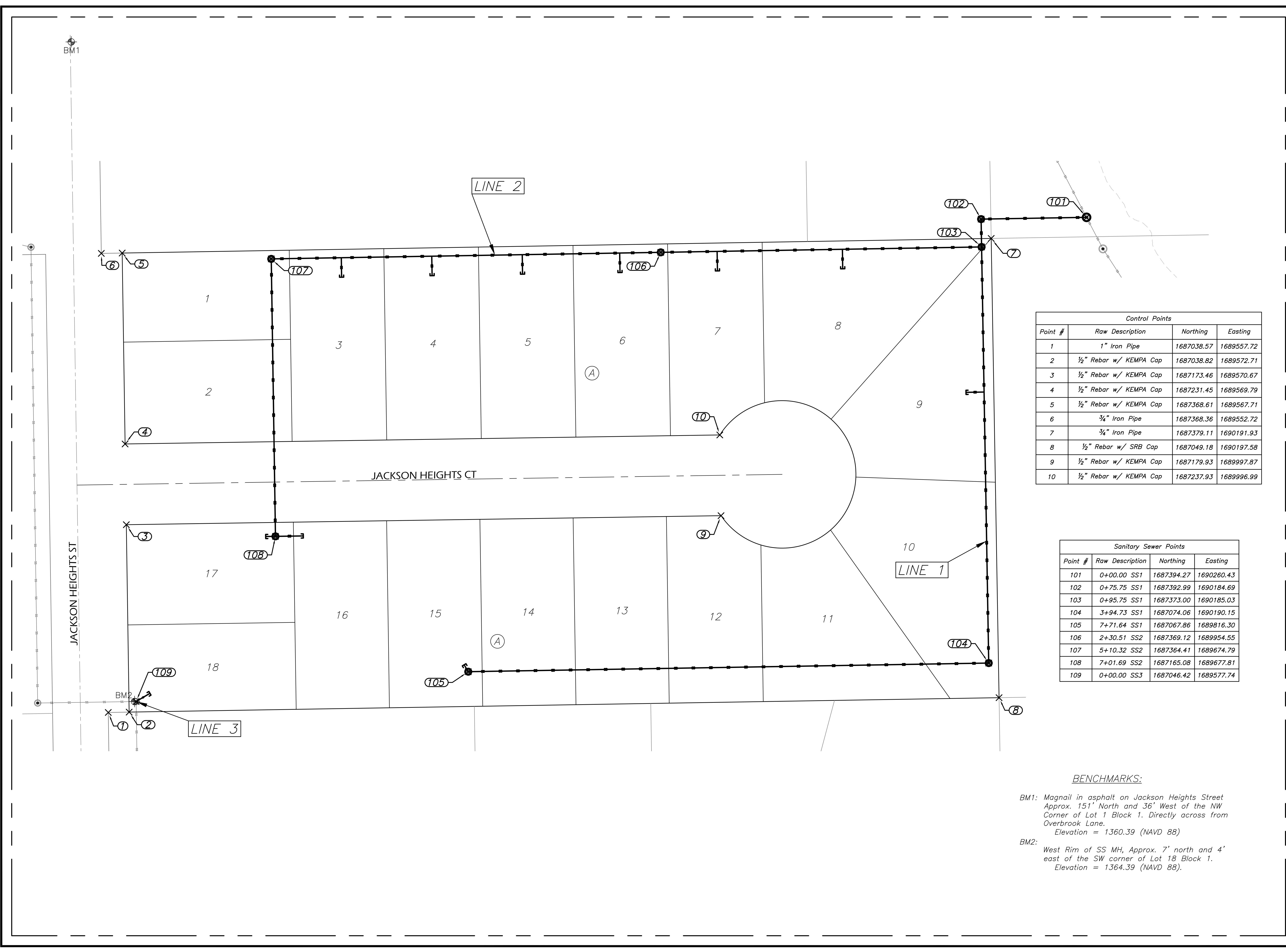
PAVING IMPROVEMENTS



REVISIONS	

KEM PROJ. 23044	DATE 01.2024
DESIGNED KEM	DRAWN ZJS

**Control Map**  
SHEET **2.0**



Control Points			
Point #	Raw Description	Northing	Easting
1	1" Iron Pipe	1687038.57	1689557.72
2	1/2" Rebar w/ KEMPA Cap	1687038.82	1689572.71
3	1/2" Rebar w/ KEMPA Cap	1687173.46	1689570.67
4	1/2" Rebar w/ KEMPA Cap	1687231.45	1689569.79
5	1/2" Rebar w/ KEMPA Cap	1687368.61	1689567.71
6	3/4" Iron Pipe	1687368.36	1689552.72
7	3/4" Iron Pipe	1687379.11	1690191.93
8	1/2" Rebar w/ SRB Cap	1687049.18	1690197.58
9	1/2" Rebar w/ KEMPA Cap	1687179.93	1689997.87
10	1/2" Rebar w/ KEMPA Cap	1687237.93	1689996.99

Sanitary Sewer Points			
Point #	Raw Description	Northing	Easting
101	0+00.00 SS1	1687394.27	1690260.43
102	0+75.75 SS1	1687392.99	1690184.69
103	0+95.75 SS1	1687373.00	1690185.03
104	3+94.73 SS1	1687074.06	1690190.15
105	7+71.64 SS1	1687067.86	1689816.30
106	2+30.51 SS2	1687369.12	1689954.55
107	5+10.32 SS2	1687364.41	1689674.79
108	7+01.69 SS2	1687165.08	1689677.81
109	0+00.00 SS3	1687046.42	1689577.74

**BENCHMARKS:**

BM1: Magnail in asphalt on Jackson Heights Street  
Approx. 151' North and 36' West of the NW  
Corner of Lot 1 Block 1. Directly across from  
Overbrook Lane.  
Elevation = 1360.39 (NAVD 88)

BM2:  
West Rim of SS MH, Approx. 7' north and 4'  
east of the SW corner of Lot 18 Block 1.  
Elevation = 1364.39 (NAVD 88).