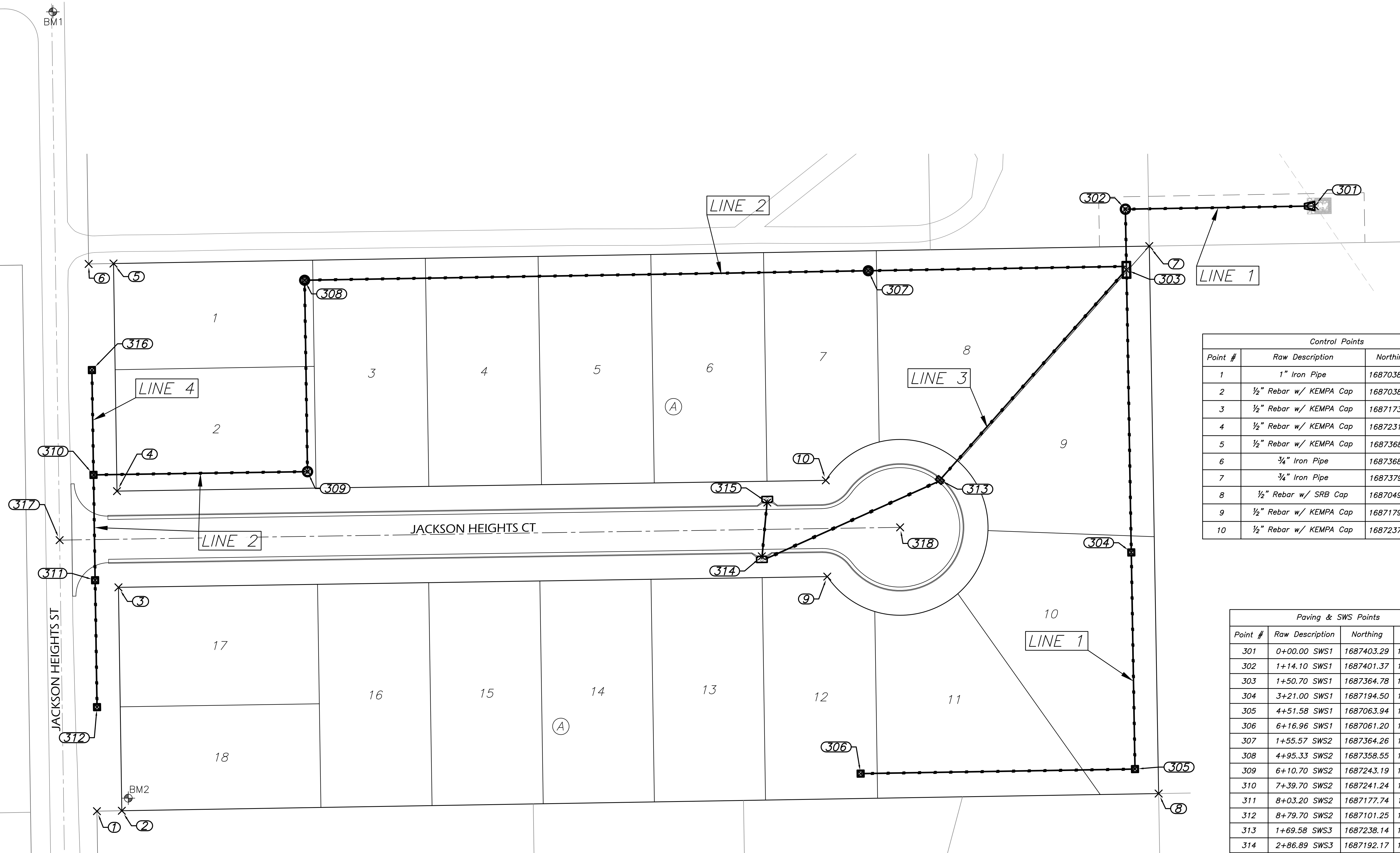


PAVING IMPROVEMENTS
**JACKSON HEIGHTS TOWNHOMES
2ND ADDITION**
WICHITA, KANSAS



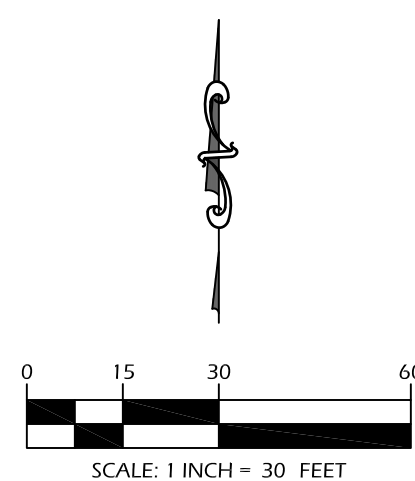
Control Points			
Point #	Raw Description	Northing	Easting
1	1" Iron Pipe	1687038.57	1689557.72
2	1/2" Rebar w/ KEMPA Cap	1687038.82	1689572.71
3	1/2" Rebar w/ KEMPA Cap	1687173.46	1689570.67
4	1/2" Rebar w/ KEMPA Cap	1687231.45	1689569.79
5	1/2" Rebar w/ KEMPA Cap	1687368.61	1689567.71
6	3/4" Iron Pipe	1687368.36	1689552.72
7	3/4" Iron Pipe	1687379.11	1690191.93
8	1/2" Rebar w/ SRB Cap	1687049.18	1690197.58
9	1/2" Rebar w/ KEMPA Cap	1687179.93	1689997.87
10	1/2" Rebar w/ KEMPA Cap	1687237.93	1689996.99

Paving & SWS Points			
Point #	Raw Description	Northing	Easting
301	0+00.00 SWS1	1687403.29	1690291.63
302	1+14.10 SWS1	1687401.37	1690177.54
303	1+50.70 SWS1	1687364.78	1690178.17
304	3+21.00 SWS1	1687194.50	1690181.09
305	4+51.58 SWS1	1687063.94	1690183.32
306	6+16.96 SWS1	1687061.20	1690017.98
307	1+55.57 SWS2	1687364.26	1690022.59
308	4+95.33 SWS2	1687358.55	1689682.88
309	6+10.70 SWS2	1687243.19	1689684.63
310	7+39.70 SWS2	1687241.24	1689555.64
311	8+03.20 SWS2	1687177.74	1689556.61
312	8+79.70 SWS2	1687101.25	1689557.76
313	1+69.58 SWS3	1687238.14	1690065.73
314	2+86.89 SWS3	1687192.17	1689958.43
315	3+22.43 SWS3	1687224.56	1689961.74
316	0+63.18 SWS4	1687304.41	1689554.68
317	BL Sta 0+00.00	1687201.92	1689535.24
318	BL Sta 5+06.61	1687209.60	1690041.79

BENCHMARKS:

BM1: Magnail in asphalt on Jackson Heights Street
Approx. 151' North and 36' West of the NW
Corner of Lot 1 Block 1. Directly across from
Overbrook Lane.
Elevation = 1360.39 (NAVD 88)

BM2: West Rim of SS MH, Approx. 7' north and 4'
east of the SW corner of Lot 18 Block 1.
Elevation = 1364.39 (NAVD 88).



REVISIONS

KEM PROJ. 23044	DATE 01.2024
DESIGNED KEM	DRAWN ZJS

Control Map