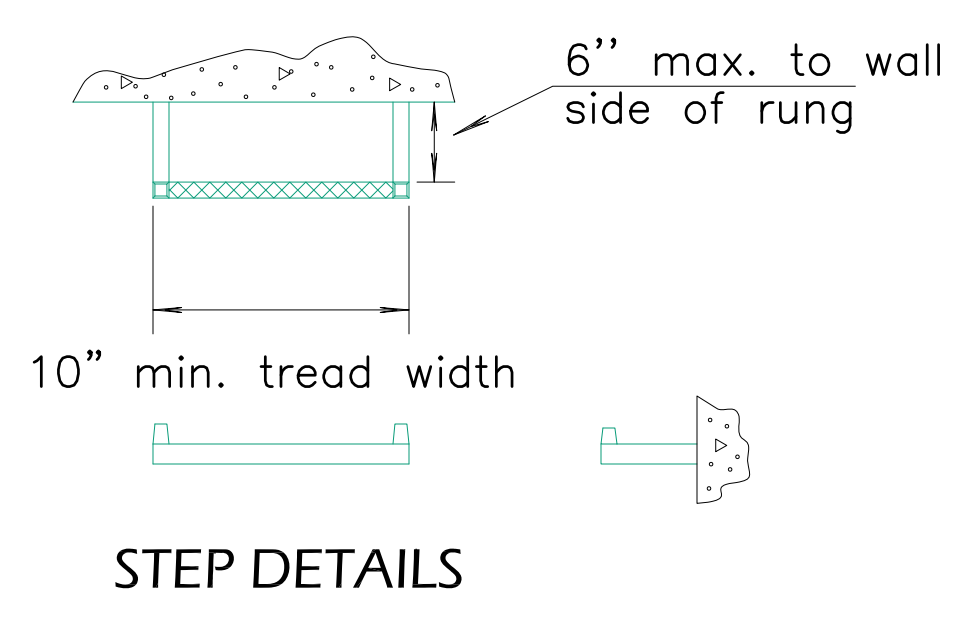
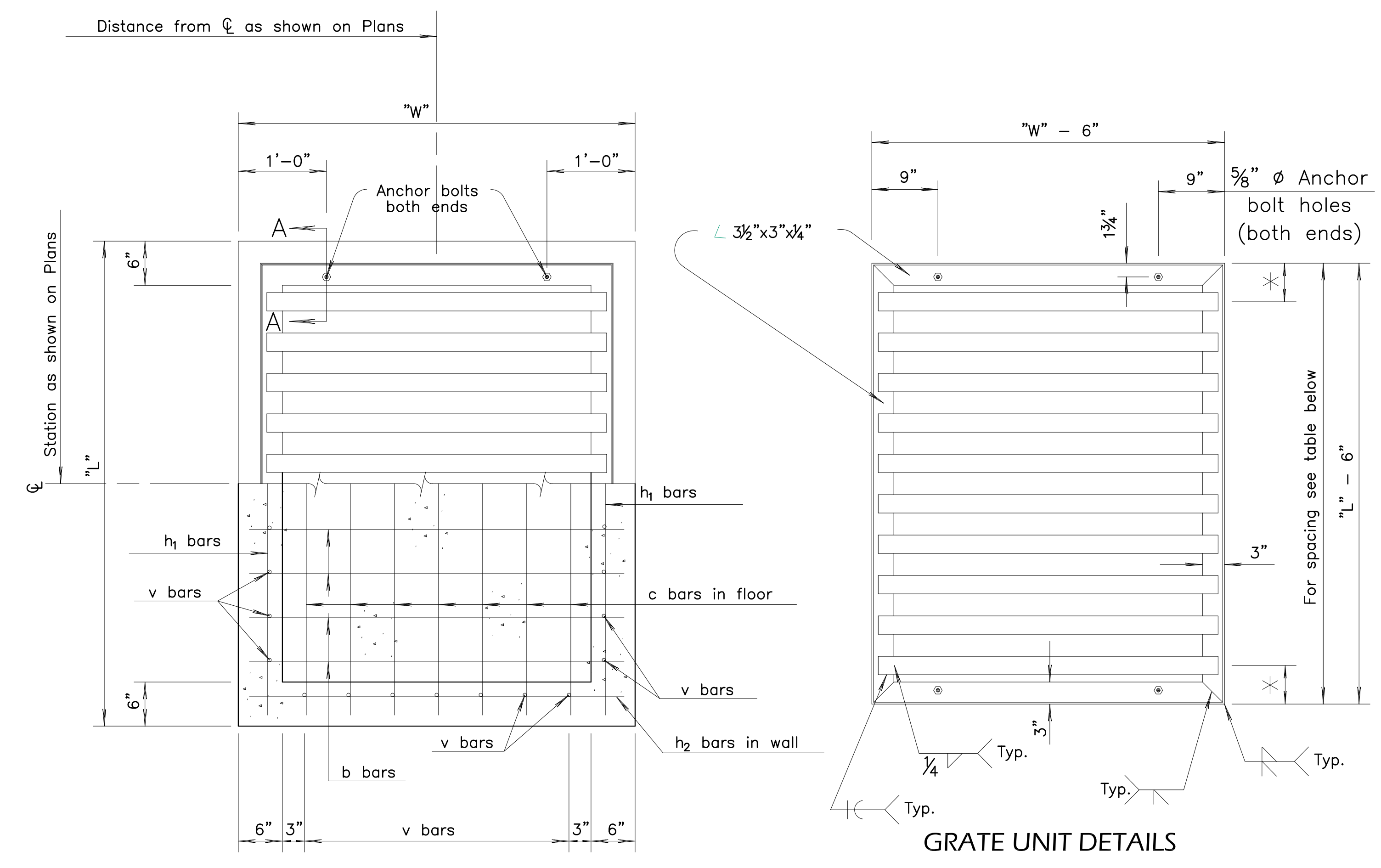
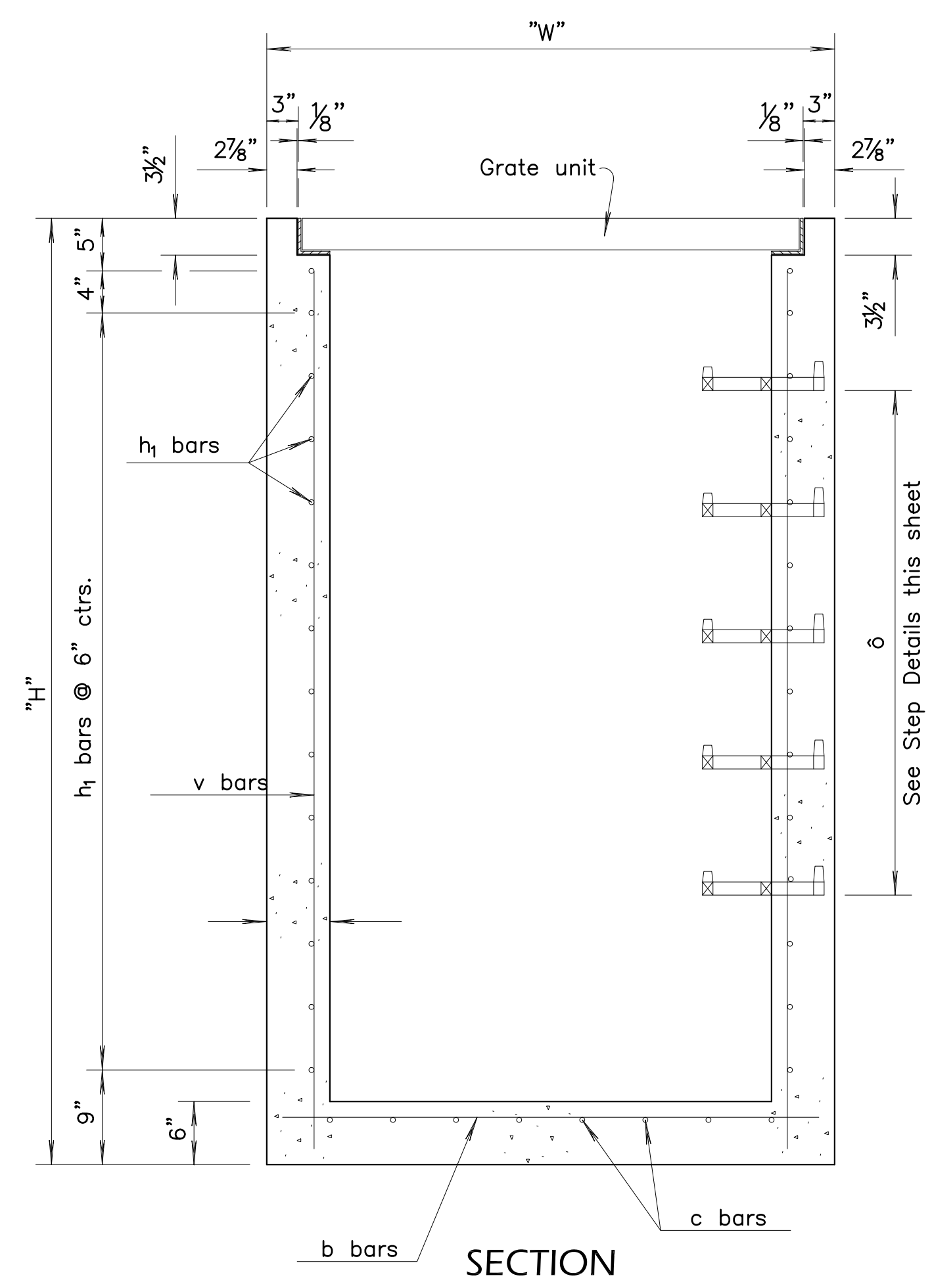
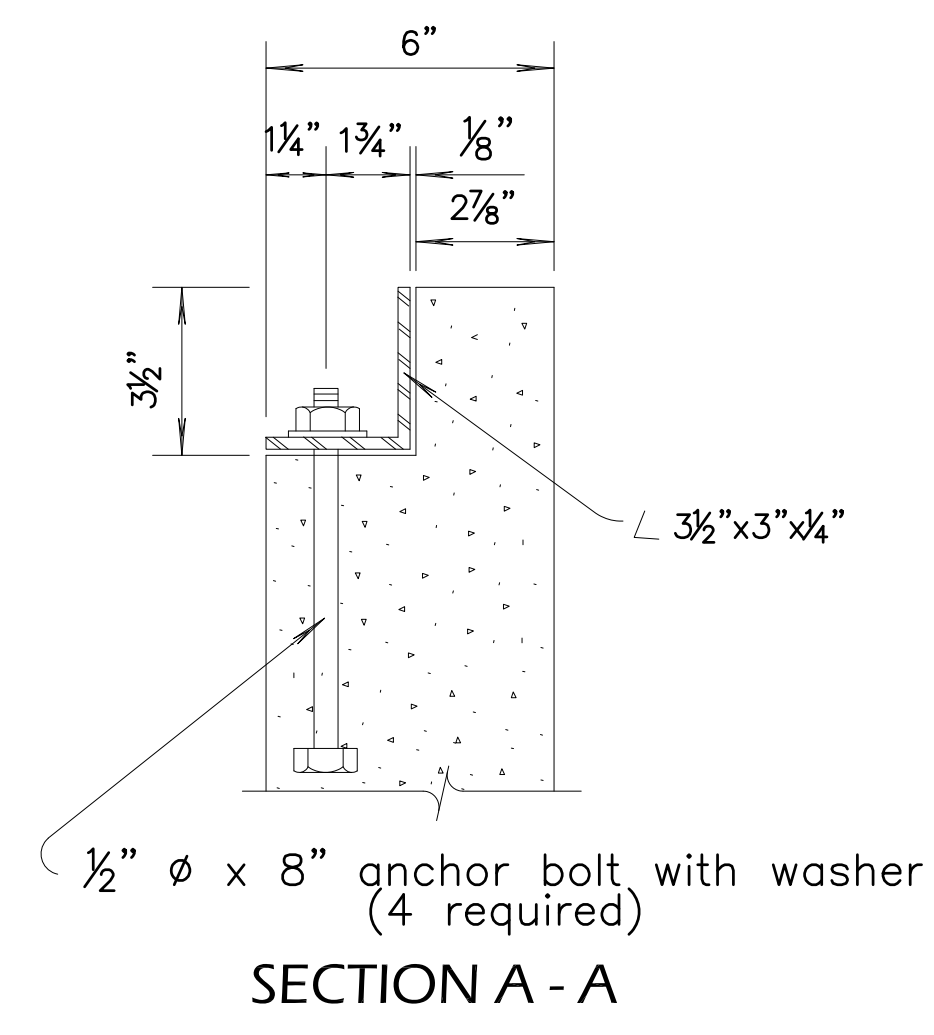


PAVING IMPROVEMENTS
JACKSON HEIGHTS TOWNHOMES
2ND ADDITION
WICHITA, KANSAS



PIPE DIMENSIONS AND SPACING				
L x W	No. of Bars	Dia. x Length x Spacing		*
7' 6" x 4' 6"	13	2 1/2" x 3'	10 1/4" pipes @ 6" ctrs.	6"
5' 6" x 4' 6"	10	2 1/2" x 3'	10 1/4" pipes @ 5 1/2" ctrs.	5 1/4"
4' 6" x 4' 6"	8	2 1/2" x 3'	10 1/4" pipes @ 5 1/2" ctrs.	4 1/4"
4'-0" x 4'-0"	7	2 1/2" x 3'	4 1/4" pipes @ 5 1/2" ctrs.	4 1/2"
10'-0" x 5'-0"	18	2 1/2" x 4'	4 1/4" pipes @ 6" ctrs.	6"



δ Steps shall be uniformly spaced. Spacing shall be 12" minimum and 16 1/2" maximum.

GENERAL NOTE
Use Concrete Grade 3.0 throughout. All exposed edges shall be finished with an edging tool.

At the contractors option, Concrete Grade 3.0 (AE) or mix used in concrete pavement may be used throughout.

In general, pipes will enter and leave the manhole at various positions. Where possible bend bars around pipes.

Floor of inlet shall be shaped as shown in various "Examples" on Reinforced Concrete Manhole Standard Drawing RD633. Concrete used for shaping shall be unreinforced Concrete Grade 3.0 or concrete pavement mix. No addition in concrete quantities shall be made for shaping floor of inlets.

Manhole steps, where used, shall be placed to afford easy access to top of shaped invert.

No deductions in concrete quantities shall be made for pipe openings.

All bars are #4 @ 6" spacing and shall have a minimum clearance of 1 1/2" unless otherwise noted on the plans.

The top of the manhole shall be sloped slightly to approximately fit the ground line or other conditions as directed by the Engineer.

The grate shall be fabricated from standard or commercial grade structural steel and black steel pipe. The unit shall be hot dipped, galvanized after fabrication, in accordance with ASTM A123 except the weight of coating shall average not less than 2.0 ounces per square foot of actual surface and no individual test shall show less than 1.8 ounces of coating per square foot of actual surface area.

Note: Anchor bolts are subsidiary to the bid item "Inlet-Manhole, Special".

REVISIONS	

KEM PROJ. 23044	DATE 01.2024
DESIGNED KEM	DRAWN ZJS

Special Inlet-Manhole Detail