

GENERAL NOTES:

- The Contractor shall comply with all applicable safety regulations. All construction shall be completed following current City Standard Specifications and Special Provisions.
- Contractor will be required to provide notice to utility companies a minimum of seventy-two (72) hours prior to any excavation, as follows:

Kansas One-Call 687-2470

The Contractor must notify the following in case of an emergency:

AT&T 1-800-246-8464
 Black Hills Energy 1-800-694-8989
 City of Wichita Water & Sewer 1-316-219-8921
 City of Wichita Stormwater 1-316-268-4090
 City of Wichita Traffic 1-316-268-4034
 Cox Communications 1-888-249-3530
 Kansas Gas Service 1-888-482-4950
 Evergy 1-800-544-4857

- Utility service lines, poles, etc. are to be adjusted as necessary by others prior to construction unless the plans specifically call for their adjustment by the Contractor or unless the plans specifically identify a utility to be adjusted by its owner during construction. Existing utilities and their location, as shown on the plans, represent the best information obtainable for design. The Contractor will be required to work around existing utilities within the right-of-way which do not conflict with proposed construction.

- Rubble from the removal of miscellaneous structures and excess excavation which is to be wasted shall be disposed of on sites to be provided by the Contractor. These sites shall be approved by the Engineer as to suitability, appearance and site location. Locations, in the opinion of the Engineer, that will leave an unsightly appearance will not be approved. All disposal sites must be approved by the Kansas Department of Health and Environment. Material either stockpiled or disposed of in a flood plain will require a Kansas State Board of Agriculture permit. Any material dumped in waters of the United States or wetlands is subject to U.S. Corps of Engineers permitting regulations. Any material buried or stockpiled beyond approved construction limits will require additional archaeological investigations unless buried in a previously approved borrow location.

- Trees and shrubs in public right-of-way which are in direct conflict with proposed new construction shall be removed by the Contractor with the City Engineer's approval. Trees and shrubs which are not in direct conflict with proposed new construction shall be saved and protected from damage.

- The Contractor shall give all property owners and/or tenants of developed property abutting the construction of this project a minimum of ten (10) days notice prior to start of construction.

- The Contractor shall be responsible for preserving property irons. The Contractor will be required to re-establish any property irons which are damaged or destroyed by his construction operations. Such irons shall be re-established by a licensed land surveyor in accordance with state laws.

- All elevations shown are City Datum. City Datum + 1187.4 = NAVD88.

- All stubs and capped pipes shall be located with green plastic tape in the same manner as risers.

- Contractor shall limit the extent of trench open overnight and weekends to less than 50 feet.

- Contractor shall provide positive drainage away from all manhole covers.

- The Contractor shall prevent any construction debris from entering the existing sanitary sewer during construction.

- The Contractor shall protect from damage and support existing utilities through construction as approved by the utility owner and the Engineer at the contractor's expense.

- All areas disturbed during construction are to be seeded as follows:

Seed -- Rye grass; 5 lbs./1000 Sq. Ft.

All costs associated with seeding including mobilization, preparation of ground, seeding, fertilizing, mulching, etc. shall be included in the L.S. bid item "Seeding".

- All existing and proposed erosion control measures including silt fencing, erosion control mat, straw bales, inlet barriers, and const. entrance shall be maintained throughout construction by the contractor and until project is accepted by the City of Wichita. The on-site engineer shall complete weekly reports on the status of erosion control measures. The contractor shall be required to comply with maintenance and/or replacement of erosion control measures as determined by the on-site engineer until project is accepted by City of Wichita. Maintenance and/or replacement of erosion control measures to be paid by L.S. bid item "Maintain Existing BMPs".

- Any excess excavation shall remain on-site and shall be stockpiled or spread at a location determined by the engineer.

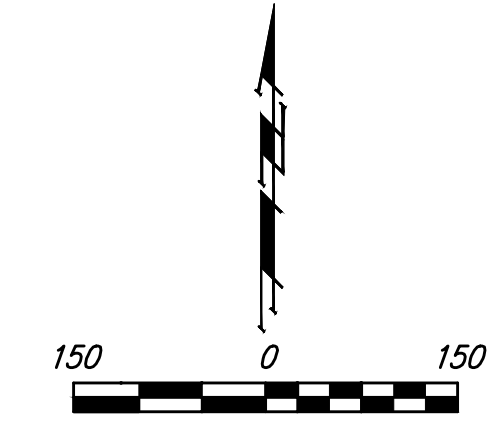
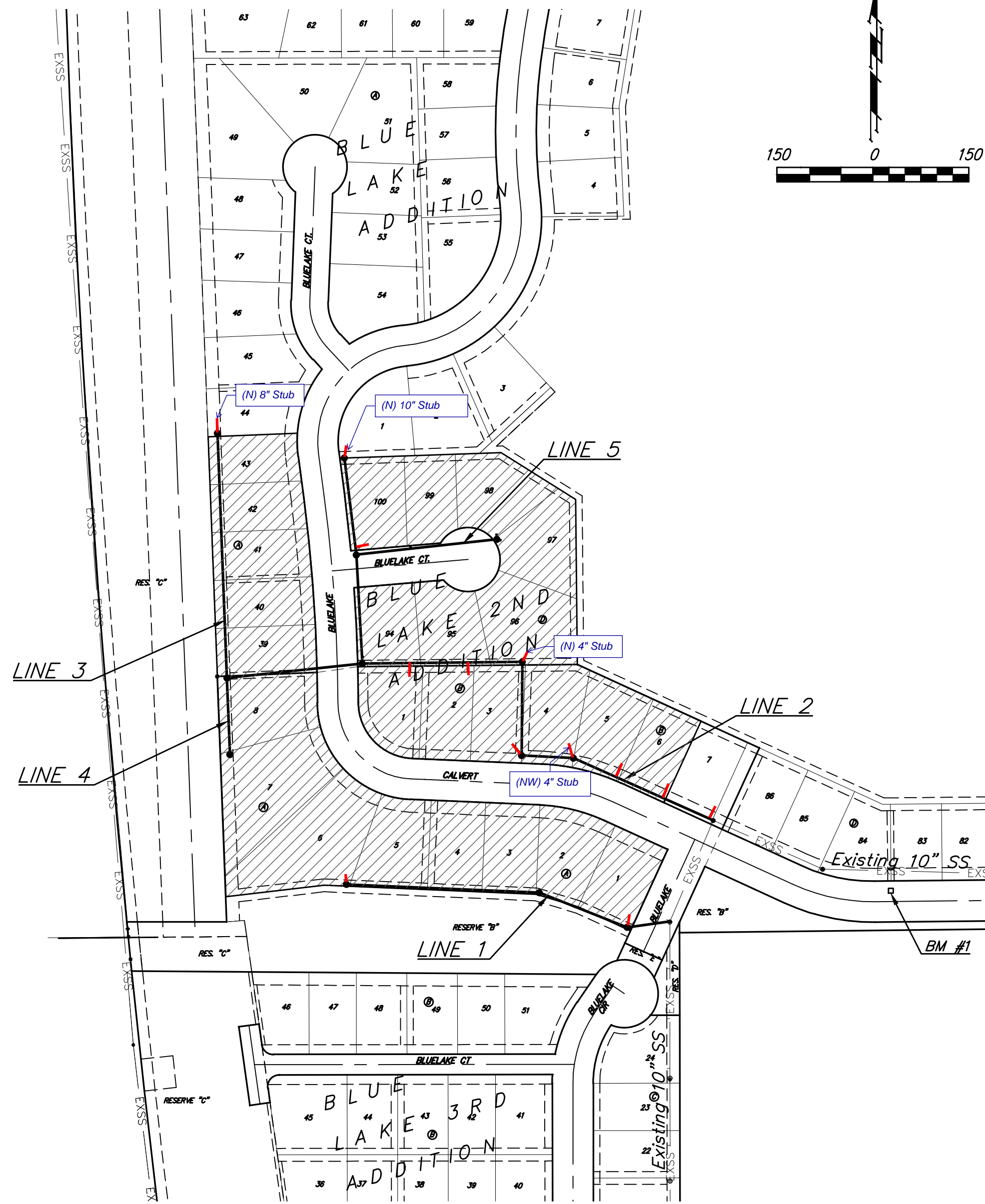
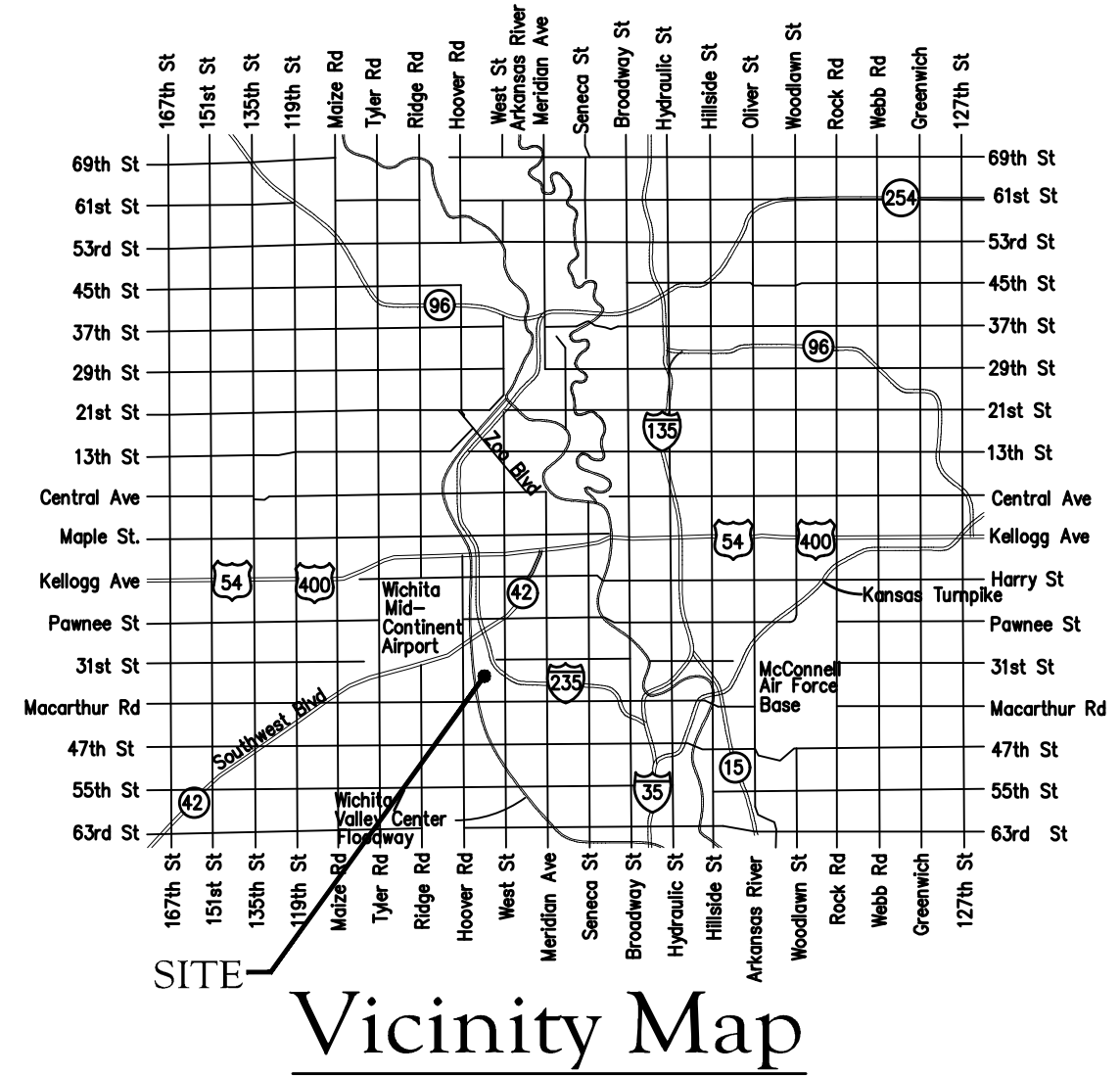
- Existing trees shall be trimmed/removed only as necessary for construction. Trimming of overhanging limbs will be permitted only with chainsaws. Trees not in direct conflict with new construction shall remain and be protected from damage. All trimming and/or removal shall be included in bid item "Site Clearing".

- The developer for this project is New Era IV, LLC, Christopher N. Stevens, Managing Member (316)648-2395

Nowak Construction - Contractor
 S. Lowe - City of Wichita, Field Project Engineer
 D. Swinger - City of Wichita, Inspector
 As-built
 Stubs & Risers
 Release Date (for connection purposes only): 10/31/2024
 Completion Date:
 pdf: apr 10/31/2024

SANITARY SEWER IMPROVEMENTS to serve **BLUE LAKE ADDITION BLUE LAKE 2ND ADDITION** **Phase I** CITY OF WICHITA, KANSAS

Paul Gunzelman, P.E. Interim City Engineer
 Project Number 468-2023-003057
 Org Code 47268623
 Munis Number E3084



Sheet Index

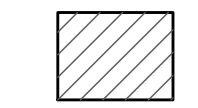
Title Sheet	1
Line 1	2
Line 2	3
Line 3	4
Lines 4 & 5	5
Erosion Control Plan	6
Precast SS Manhole Detail	7
Manhole Frame & Cover Detail	8
Vertical Riser Detail	9
Erosion Control BMP Details	10-14
Coordinate Sheet	15
Copy of Plat	16-17

Benchmarks

BM #1: " " on top of curb, north side of Calvert, 14.7' South of the most southerly corner common to Lots 83 and 84, Block D, Blue Lake Addition. Elev. = 103.95 City Datum

BM #2: " " With + Cut on northwest face of drop inlet on north side of MacArthur Road, 79.4' north of centerline of MacArthur Road and 152.3' east-southeast of southwest corner of Reserve "C", Blue Lake 3rd Addition. Elev. = 95.55 City Datum

Benefit District



September 25, 2023

BAUGHMAN COMPANY
 315 Ellis St. Wichita, KS 67211 316-262-7271
 BaughmanCo.com



E:\Projects\Blue Lake 2nd Addition\Engineering\Phase 1\SS 23-09-E3084\SS\SS Sewer.dwg



Construction Engineering Division
 1801 S. McLean Blvd., Suite B
 Wichita KS, 67213
 (316) 268-4027

Sanitary Sewer Riser Table

Project Name: WDS_SS to serve Blue Lake 1st & 2nd Addition
Project Location: north of MacArthur Rd, east of Hoover Rd
Project No: 468-2023-003057
MUNIS No: E3084/47268623
Contractor: Nowak Construction Co. Inc.
Inspector: Daniel Swinger

Riser No.	Line No.	Station	Distance from Main to Riser (Lt./Rt.)	Distance from		Comment
				Upstream MH	Downstream MH	
1	11	00+67.30	9.5' Rt	208.6	5.5	
2	2	05+16.70	7.5' Rt	at MH	301	MH Stub
3	2	00+14.00	11.7' Rt	14.8	226.8	
4	2	00+87.00	10.4' Rt	85	156.6	
5	2	01+66.70	13.4' Rt	166.2	75.4	
6	2	02+39.40	6.9' Rt	77	3.3	MH Stub
7	2	03+20.40	9.2' Lt	131.7	13.3	MH Stub
8	2	04+66.80	7.6' Rt	249	1	MH Stub
9	2	05+52.20	16.5' Lt	165.2	84.8	
10	2	06+42.90	12.8' Lt	71.4	178.6	
11	2	08+99.40	10.9' Lt	140	12.5	
12	4	01+19.60	6.9' Lt	at MH	120.3	MH Stub
13	5	00+85.50	10.9' Lt	137.4	82.6	
14	5	02+20.90	18.3' Lt	at MH	221	MH Stub
15	5	02+20.90	10.4' Rt	at MH	221	MH Stub

BENCHMARKS:
 BM #1 - " " on top of curb, north side of Calvert, 14.7' south of the most southerly corner common to Lots 83 and 84, Block D, Blue Lake Addition.
 Elev. = 103.95 City Datum

BM #2 - " " with + cut on northwest face of drop inlet on north side of MacArthur Road, 79.4' North of centerline of MacArthur Road and 152.3' E/SE of southwest corner of Reserve "C", Blue Lake 3rd Addition.
 Elev. = 95.55 City Datum

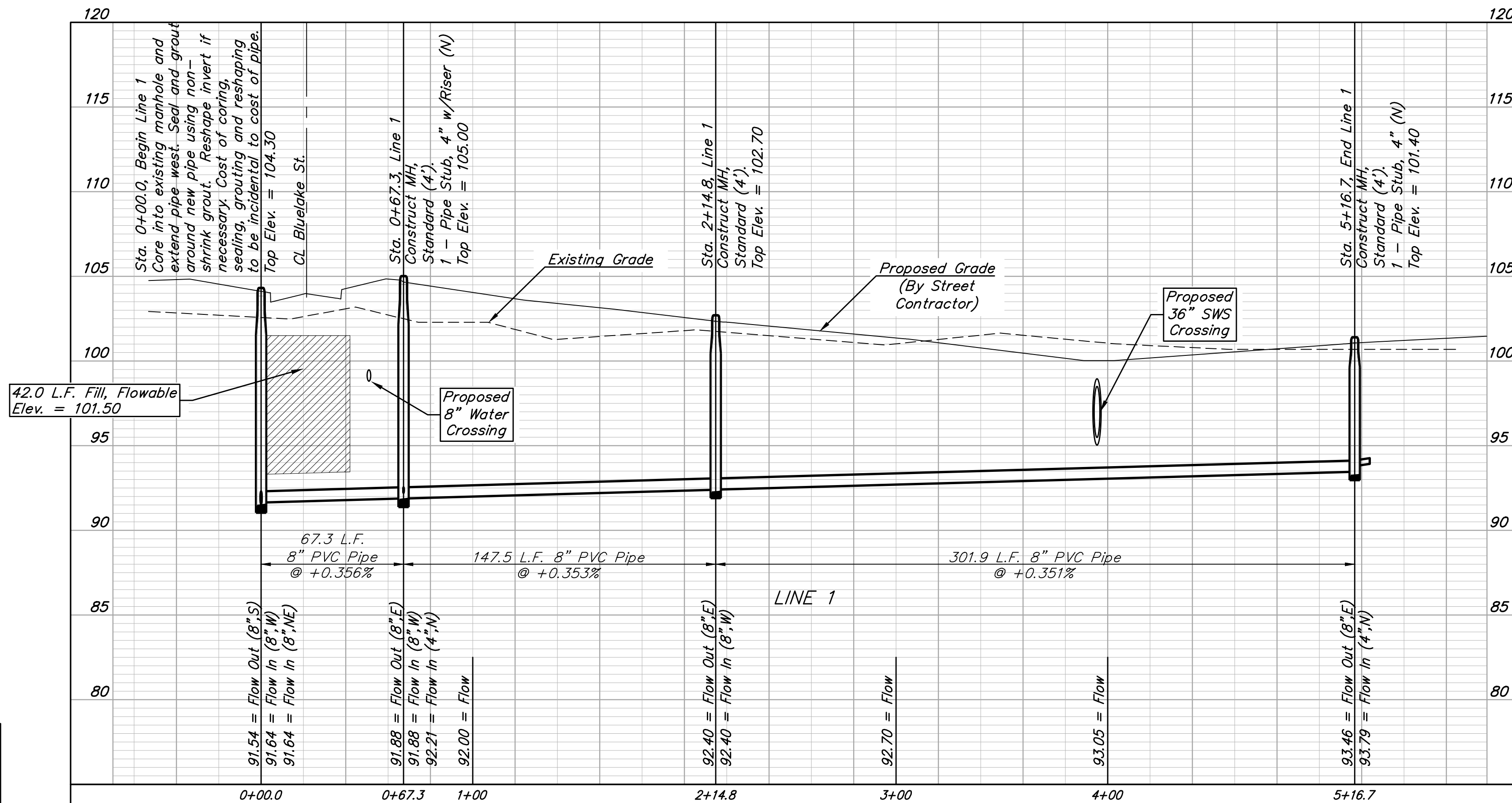
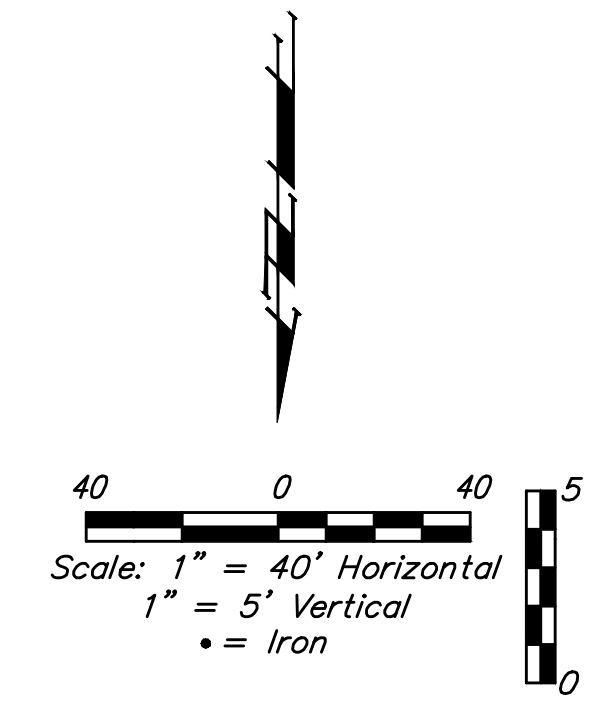
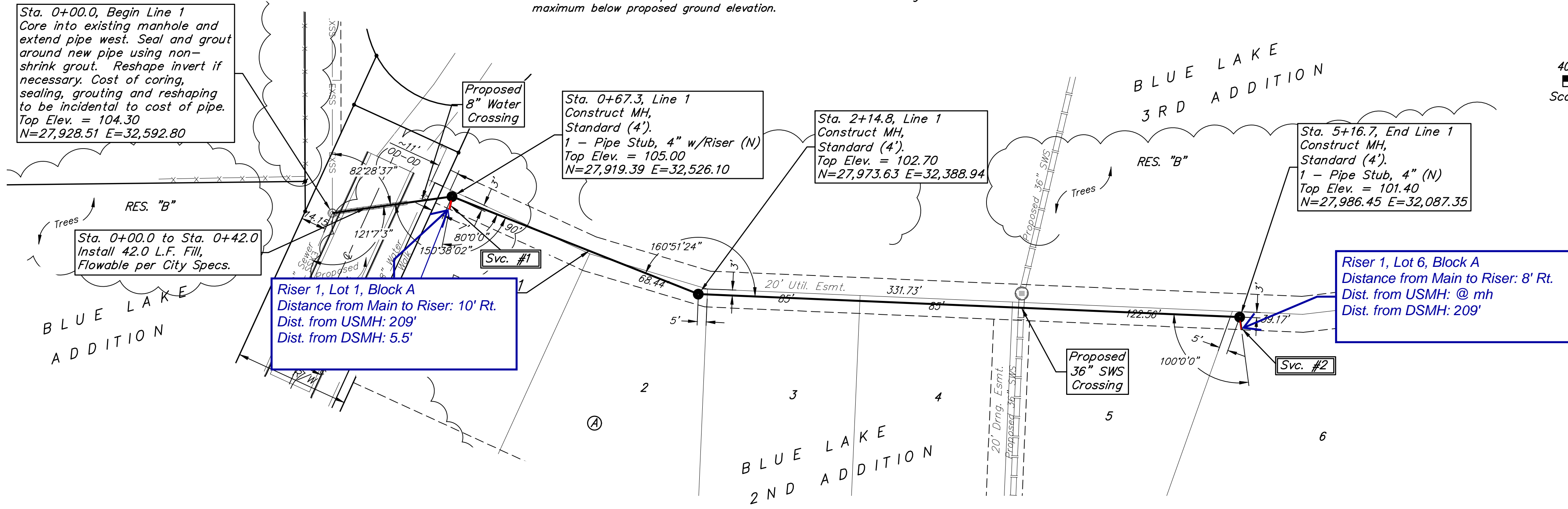
Trees in conflict with sanitary sewer construction to be removed by contractor. To be paid for as lump sum bid item "Site Clearing"

All other trees shall remain and be protected from damage during construction. Overhanging limbs shall be trimmed by the Contractor using a chain saw only as necessary for construction and with approval of the Engineer. Cost of tree trimming to be included in bid item "Site Clearing"

SEWER SERVICE TABLE

NUMBER	TYPE	LOCATION			FOR INFORMATION ONLY	
		LOT NO.	BLOCK NO.	LINE NO.	STATION\ DIRECTION	APPROXIMATE LENGTH 4" PIPE
1	4" Stub w/Riser	1	A	1	0+67.3/Rt.	9'
2	4" Stub	6	A	1	5+16.7/Rt.	7'-2" 10'

NOTE: Vertical Riser Pipe shall be extended to 2' minimum above ground water elevation and 4' maximum below proposed ground elevation.



Contractor shall verify elevation and alignment of existing 10" pipe prior to construction and notify Engineer of any discrepancy.



BAUGHMAN COMPANY
 315 Ellis St.
 Wichita, KS 67211
 316-262-7271
 BaughmanCo.com

BLUE LAKE ADD./2ND ADD.
 PHASE 1

LINE 1

SANITARY SEWER IMPROVEMENTS

PROJECT NUMBER:
 468-2023-003057

DESIGN: DMV DRAWING: TMS
 DATE: 9/25/2023

SHEET 2 OF 17

File: E:\Projects\Blue Lake 2nd Addition\Engineering\Phase 1\SS 23-03-E460\Sewer.dwg

SEWER SERVICE TABLE

NUMBER	TYPE	LOCATION				FOR INFORMATION ONLY		Distance from		
		LOT NO.	BLOCK NO.	LINE NO.	STATION DIRECTION	APPROXIMATE LENGTH 4" PIPE		Main to Riser (Lt./Rt.)	USMH	DSMH
					VERTICAL	HORIZONTAL				
3	10" X 4" Tee W/Riser	7	B	2	0+07.0/Rt.	-	13.0'	12' Rt.	15'	227'
4	10" X 4" Tee W/Riser	6	B	2	0+87.0/Rt.	-	13.8'	10' Rt.	85'	157'
5	10" X 4" Tee W/Riser	5	B	2	1+66.7/Rt.	-	14.4'	13' Rt.	166'	75'
6	4" Stub	4	B	2	2+39.4/Rt.	-	6.8'	7' Rt.	77'	3'
7	4" Stub	3	B	2	3+20.6/Rt.	-	15.0'	9' Lt.	132'	13'
8	4" Stub	96	D	2	4+66.8/Rt.	-	5.0'	8' Rt.	249'	1'
9	10" X 4" Tee W/Riser	95	D	2	5+52.2/Lt.	-	15.0'	17' Lt.	165'	85'
10	10" X 4" Tee W/Riser	94	D	2	6+42.9/Lt.	-	15.0'	13' Lt.	71'	179'
11	10" X 4" Tee W/Riser	100	D	2	8+99.4/Lt.	-	7.5'	11' Lt.	140'	13'

NOTE: Vertical Riser Pipe shall be extended to 2' minimum above ground water elevation and 4' maximum below proposed ground elevation.

BENCHMARKS:
 BM #1 - "□" on top of curb, north side of Calvert, 14.7' south of the most southerly corner common to Lots 83 and 84, Block D, Blue Lake Addition.
 Elev. = 103.95 City Datum

BM #2 - "□" with + cut on northwest face of drop inlet on north side of MacArthur Road, 79.4' North of centerline of MacArthur Road and 152.3' E/SE of southwest corner of Reserve "C", Blue Lake 3rd Addition.
 Elev. = 95.55 City Datum

Contractor shall verify elevation and alignment of existing 10" pipe prior to construction and notify Engineer of any discrepancy.

Sta. 0+00.0, Begin Line 2
 Remove existing 10" stub if necessary and extend 10" pipe NW. Pipe may be extended from existing stub if the alignment and slope of the existing stub works with the proposed pipe extension. Removal of stub, grouting & sealing of pipe extension to be incidental to pipe cost. Adjust manhole top From Elev. = 102.90 To Elev. = 103.60
 N=28,086.42 E=32,660.90

Sta. 2+39.4, Line 2
 Construct MH, Standard (4'),
 1 - Pipe Stub, 4" (NW)
 Top Elev. = 102.00
 N=28,184.03 E=32,442.25

Sta. 0+00.0 to Sta. 3+20.6
 Install 320.6 L.F. Sand Backfill (Flushed and vibrated) per City Specifications.

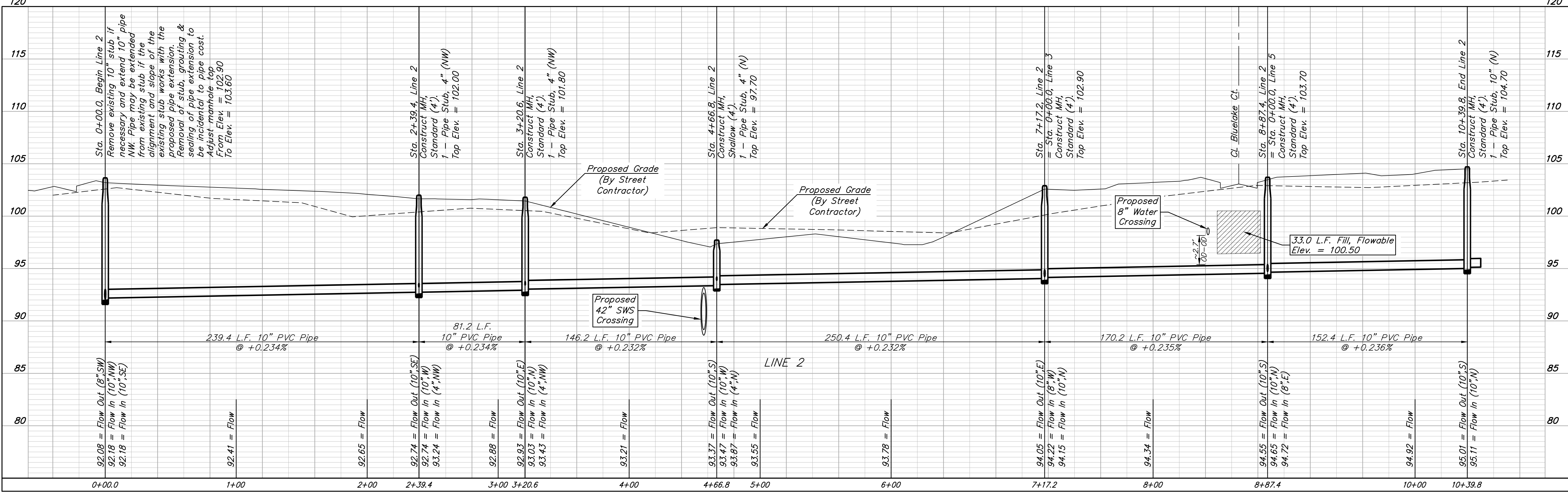
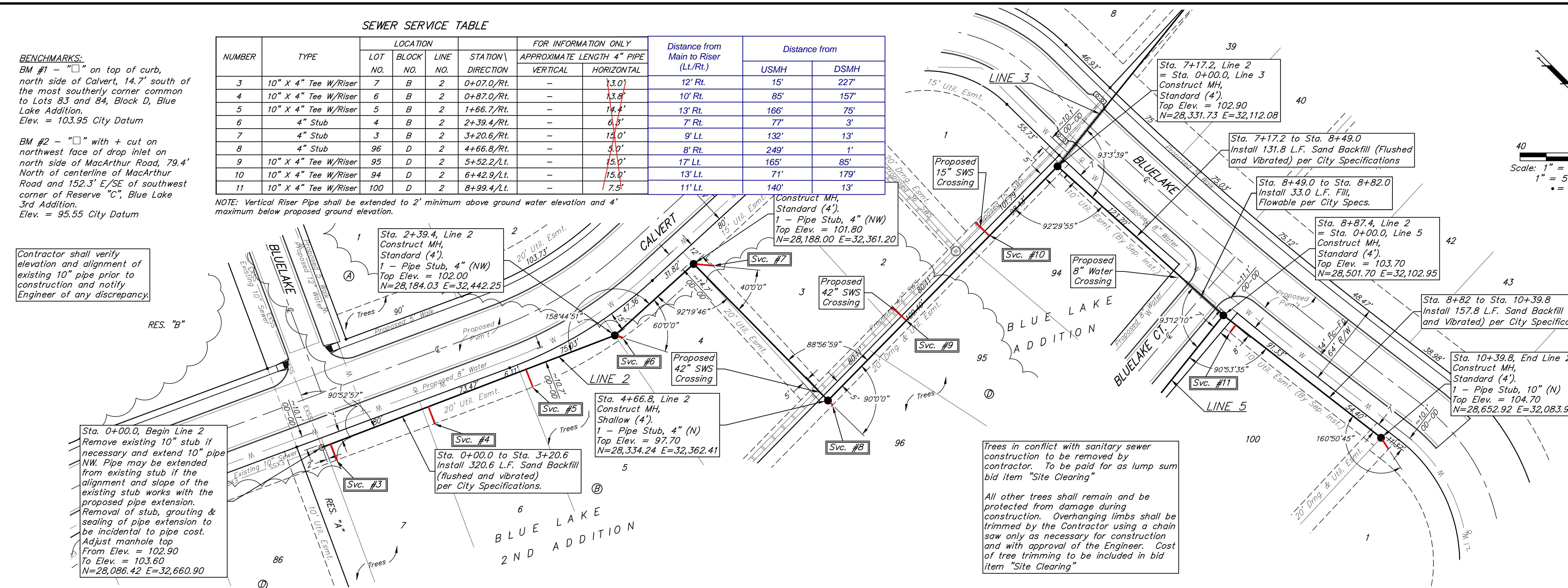
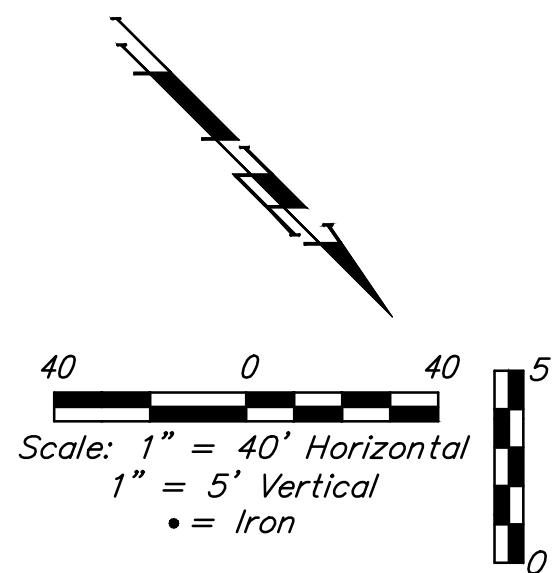
Sta. 4+66.8, Line 2
 Construct MH, Shallow (4'),
 1 - Pipe Stub, 4" (N)
 Top Elev. = 97.70
 N=28,334.24 E=32,362.41

Construct MH, Standard (4'),
 1 - Pipe Stub, 4" (NW)
 Top Elev. = 101.80
 N=28,188.00 E=32,361.20

Sta. 10+39.8, End Line 2
 Construct MH, Standard (4'),
 1 - Pipe Stub, 10" (N)
 Top Elev. = 104.70
 N=28,652.92 E=32,083.92

Trees in conflict with sanitary sewer construction to be removed by contractor. To be paid for as lump sum bid item "Site Clearing"

All other trees shall remain and be protected from damage during construction. Overhanging limbs shall be trimmed by the Contractor using a chain saw only as necessary for construction and with approval of the Engineer. Cost of tree trimming to be included in bid item "Site Clearing"



BAUGHMAN COMPANY

315 Ellis St.
 Wichita, KS 67211
 316-262-7271
 BaughmanCo.com

BLUE LAKE ADD./2ND ADD.
 PHASE 1

LINE 2

SANITARY SEWER IMPROVEMENTS

PROJECT NUMBER:
 468-2023-003057

DESIGN: DMV DRAWN: TMS

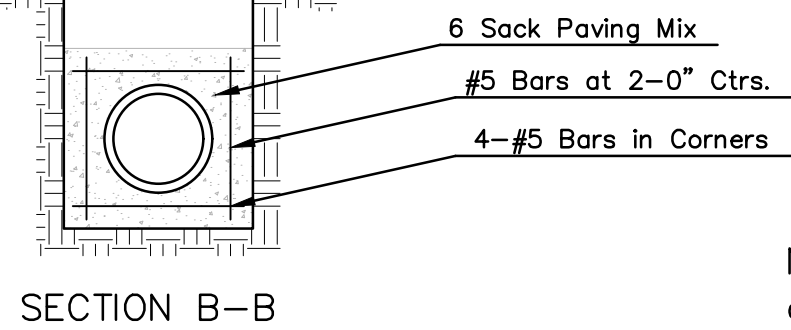
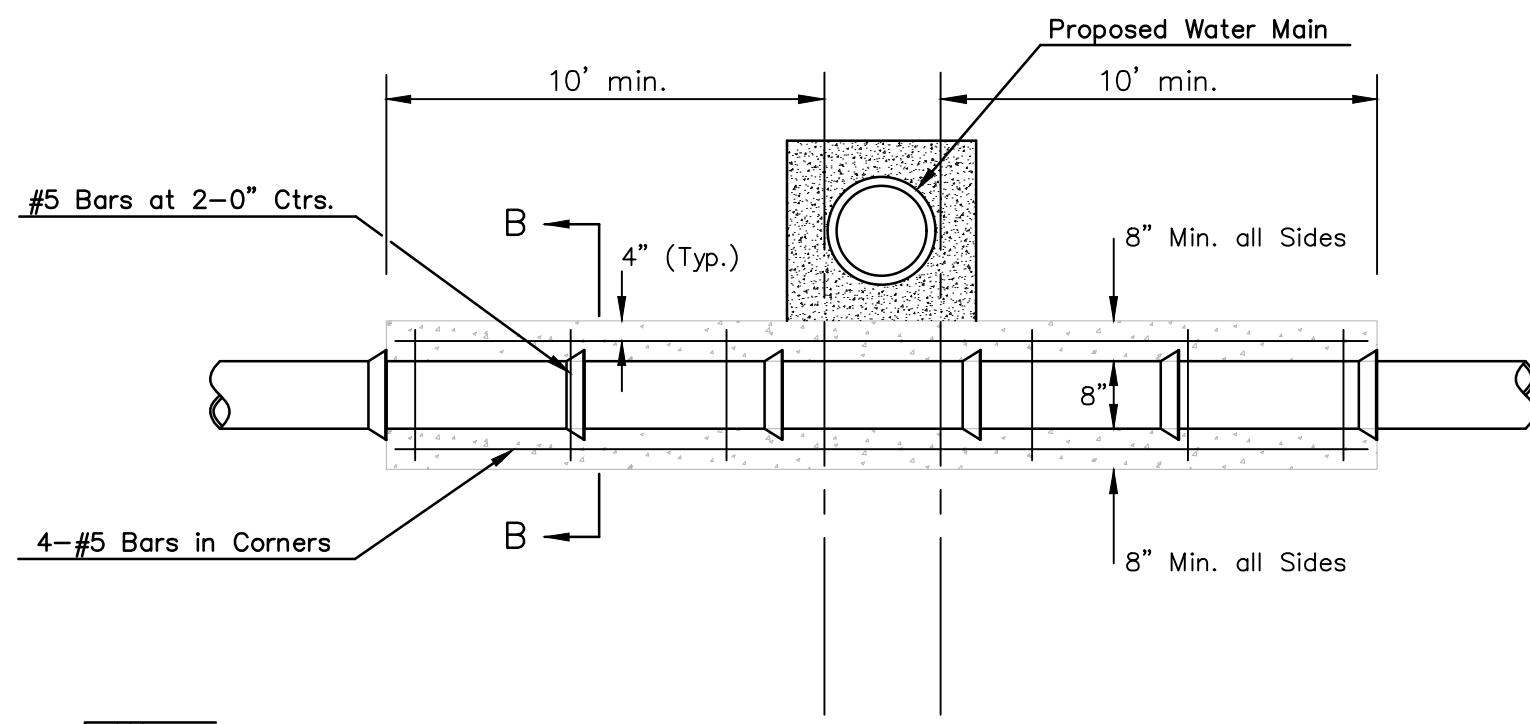
DATE: 9/25/2023

SHEET **3** OF **17**

File: E:\Projects\Blue Lake 2nd Addition\Engineering\Phase 1\SS 23-03-E460\Sewer.dwg

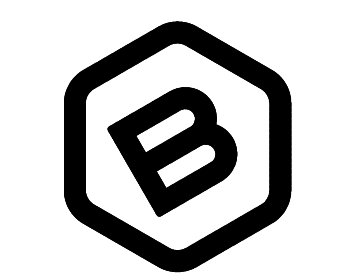
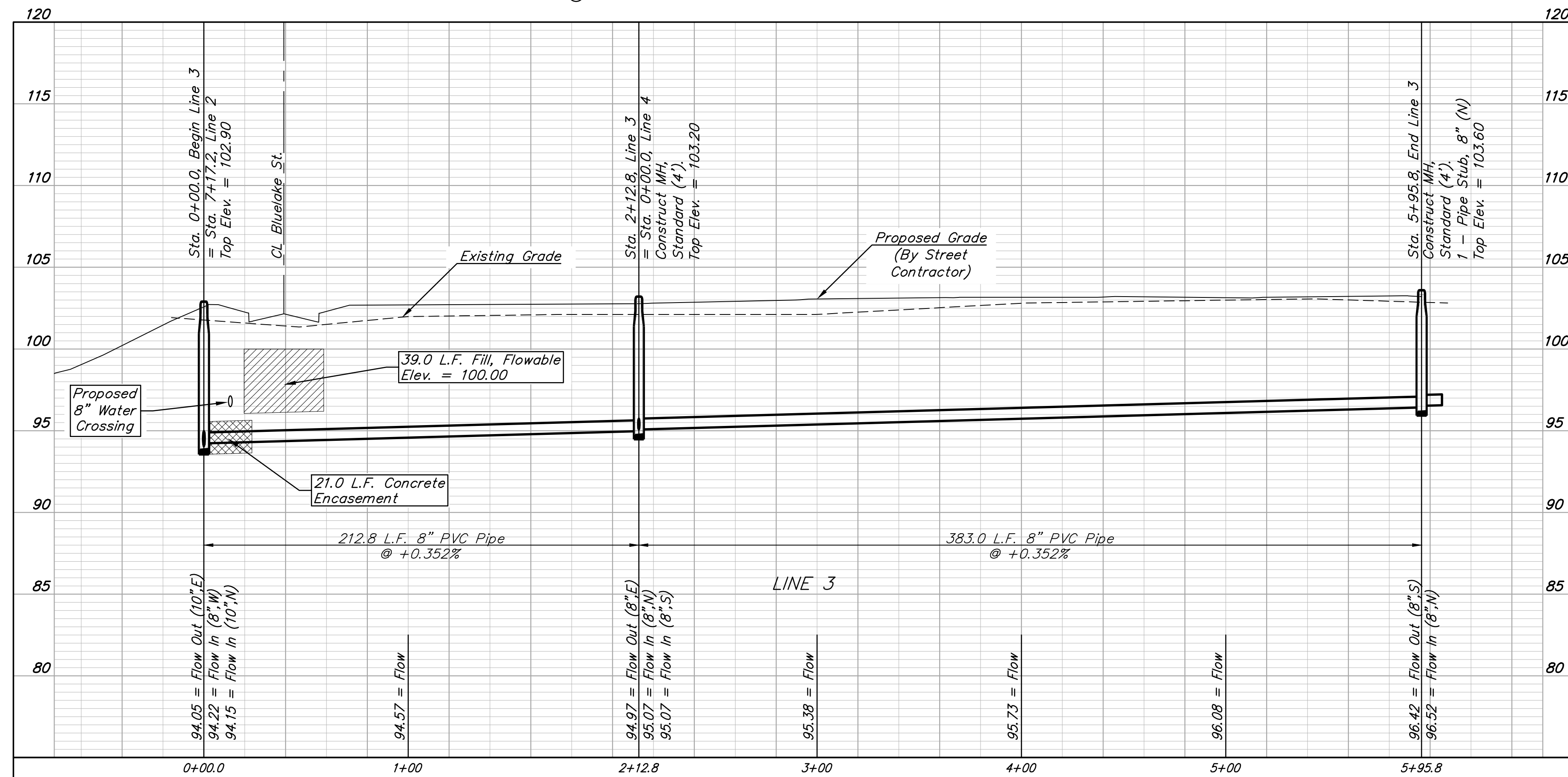
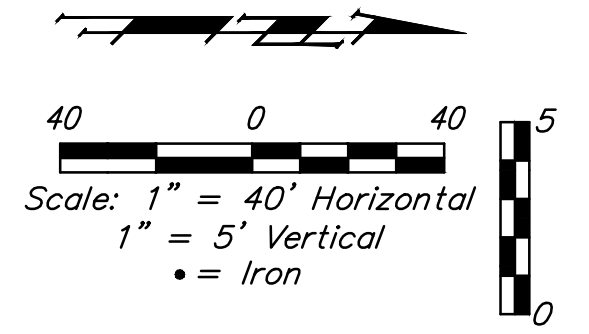
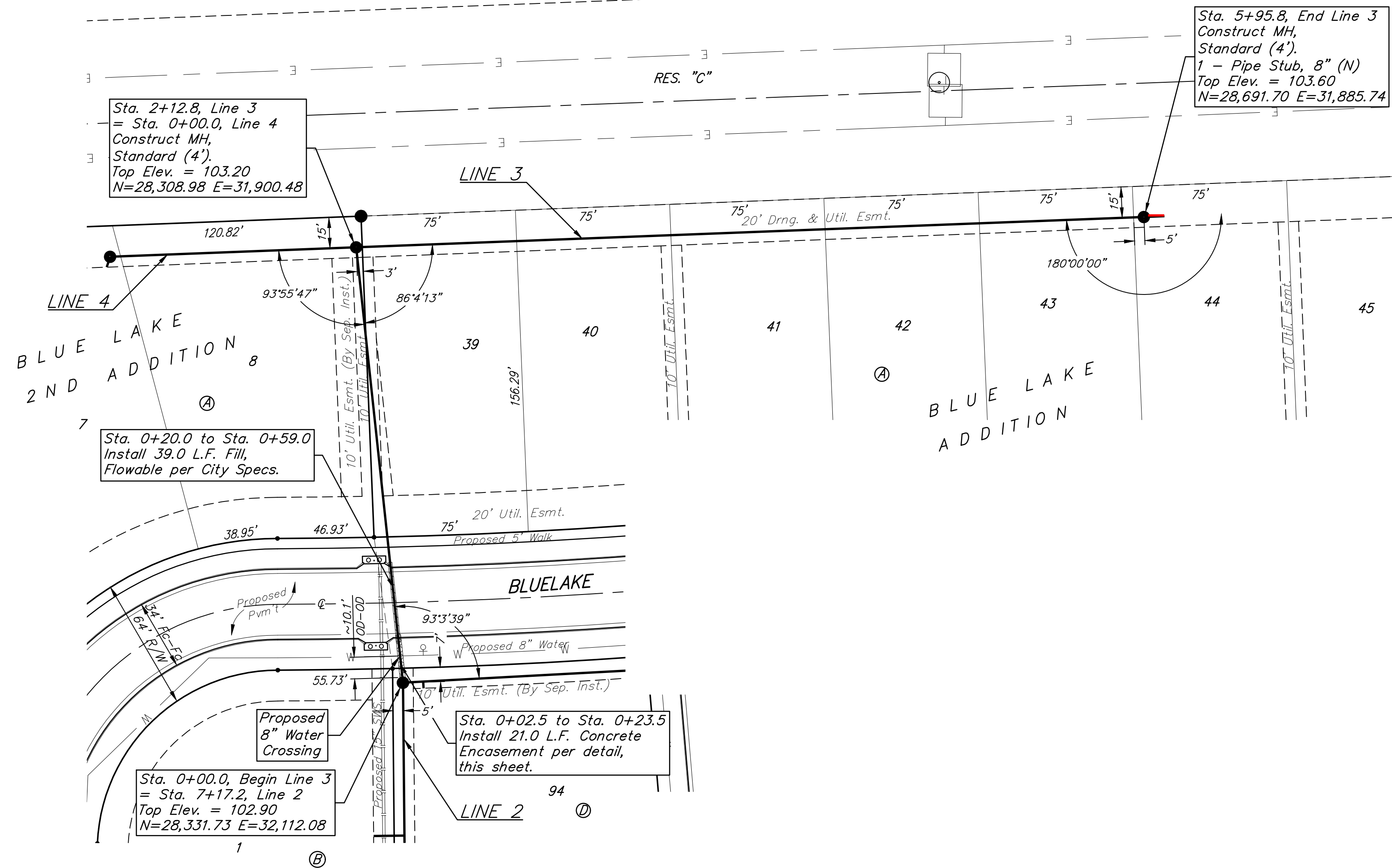
BENCHMARKS:
 BM #1 - "□" on top of curb, north side of Calvert, 14.7' south of the most southerly corner common to Lots 83 and 84, Block D, Blue Lake Addition.
 Elev. = 103.95 City Datum

BM #2 - "□" with + cut on northwest face of drop inlet on north side of MacArthur Road, 79.4' North of centerline of MacArthur Road and 152.3' E/SE of southwest corner of Reserve "C", Blue Lake 3rd Addition.
 Elev. = 95.55 City Datum



Note: Encasement to begin and end at a Bell on Sanitary Sewer Pipe.

REINFORCED CONCRETE ENCASEMENT OF SANITARY SEWER



BAUGHMAN COMPANY
 315 Ellis St.
 Wichita, KS 67211
 316-262-7271
 BaughmanCo.com

BLUE LAKE ADD./2ND ADD.
 PHASE 1

LINE 3

SANITARY SEWER IMPROVEMENTS

PROJECT NUMBER:
 468-2023-003057

DESIGN: DMV DRAWN: TMS

DATE: 9/25/2023

SHEET **4** OF **17**

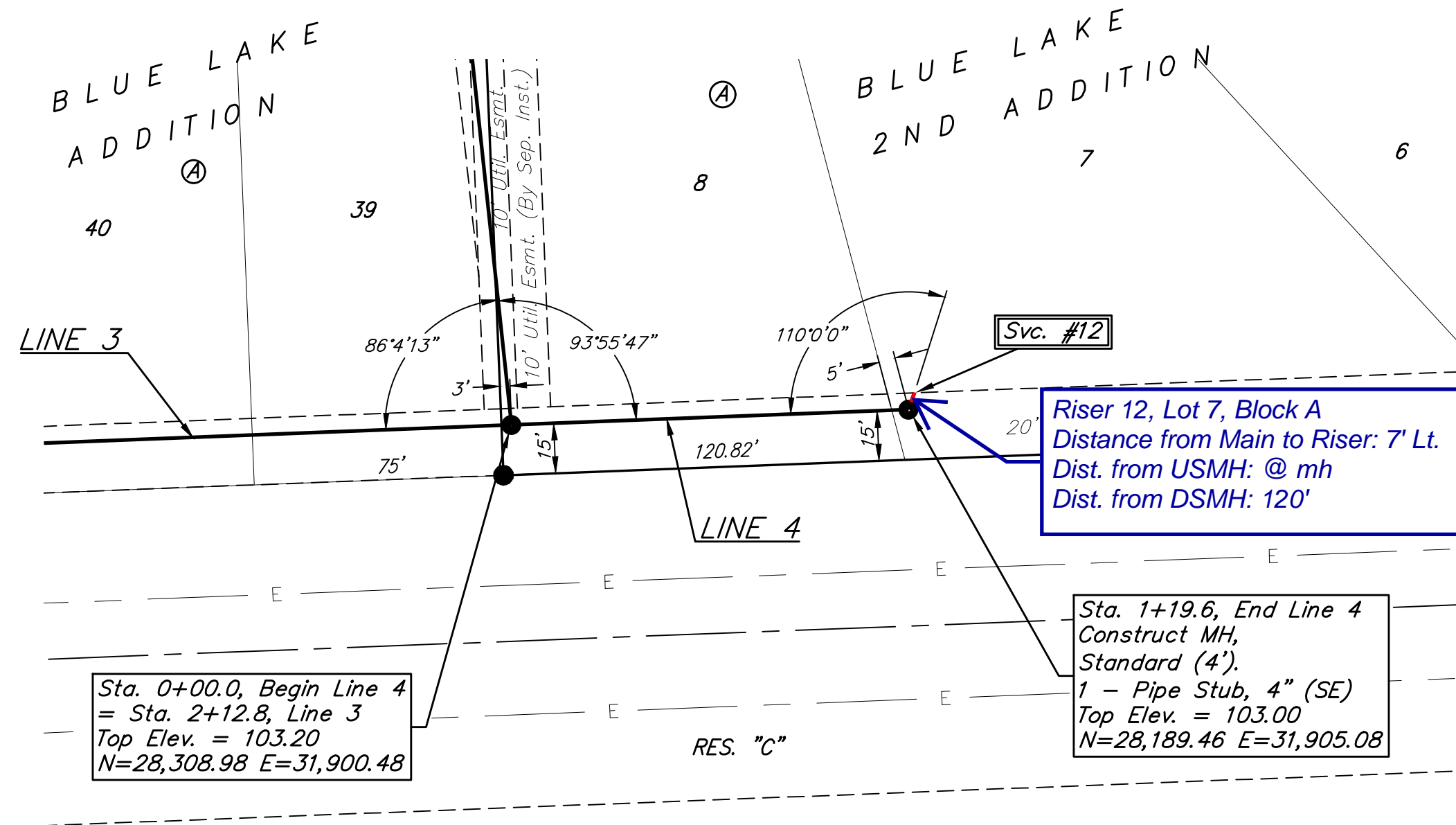
File: E:\Projects\Blue Lake 2nd Addition\Engineering\Phase 1\SS 23-03-E460\Sewer.dwg

BENCHMARKS:
 BM #1 - " " on top of curb,
 north side of Calvert, 14.7' south of
 the most southerly corner common
 to Lots 83 and 84, Block D, Blue
 Lake Addition.
 Elev. = 103.95 City Datum

BM #2 - " " with + cut on
 northwest face of drop inlet on
 north side of MacArthur Road, 79.4'
 North of centerline of MacArthur
 Road and 152.3' E/SE of southwest
 corner of Reserve "C", Blue Lake
 3rd Addition.
 Elev. = 95.55 City Datum

Trees in conflict with sanitary sewer
 construction to be removed by
 contractor. To be paid for as lump sum
 bid item "Site Clearing"

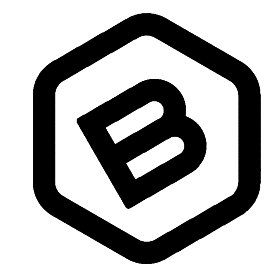
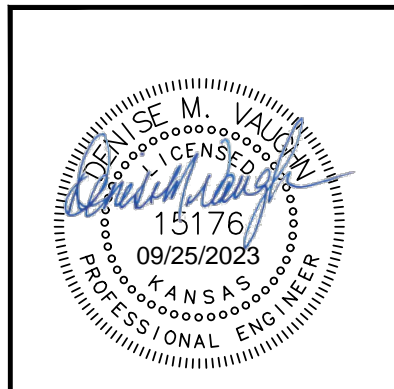
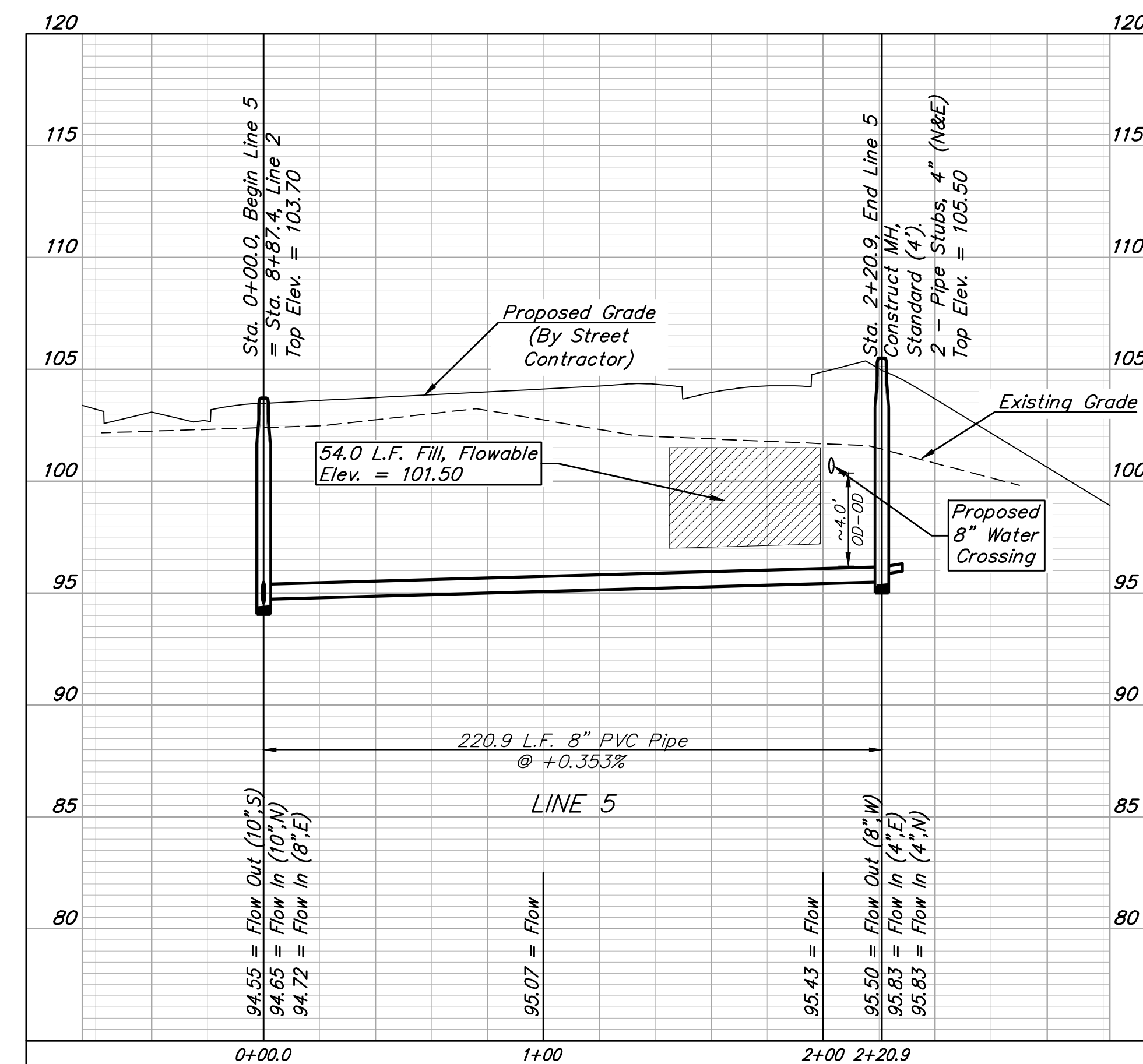
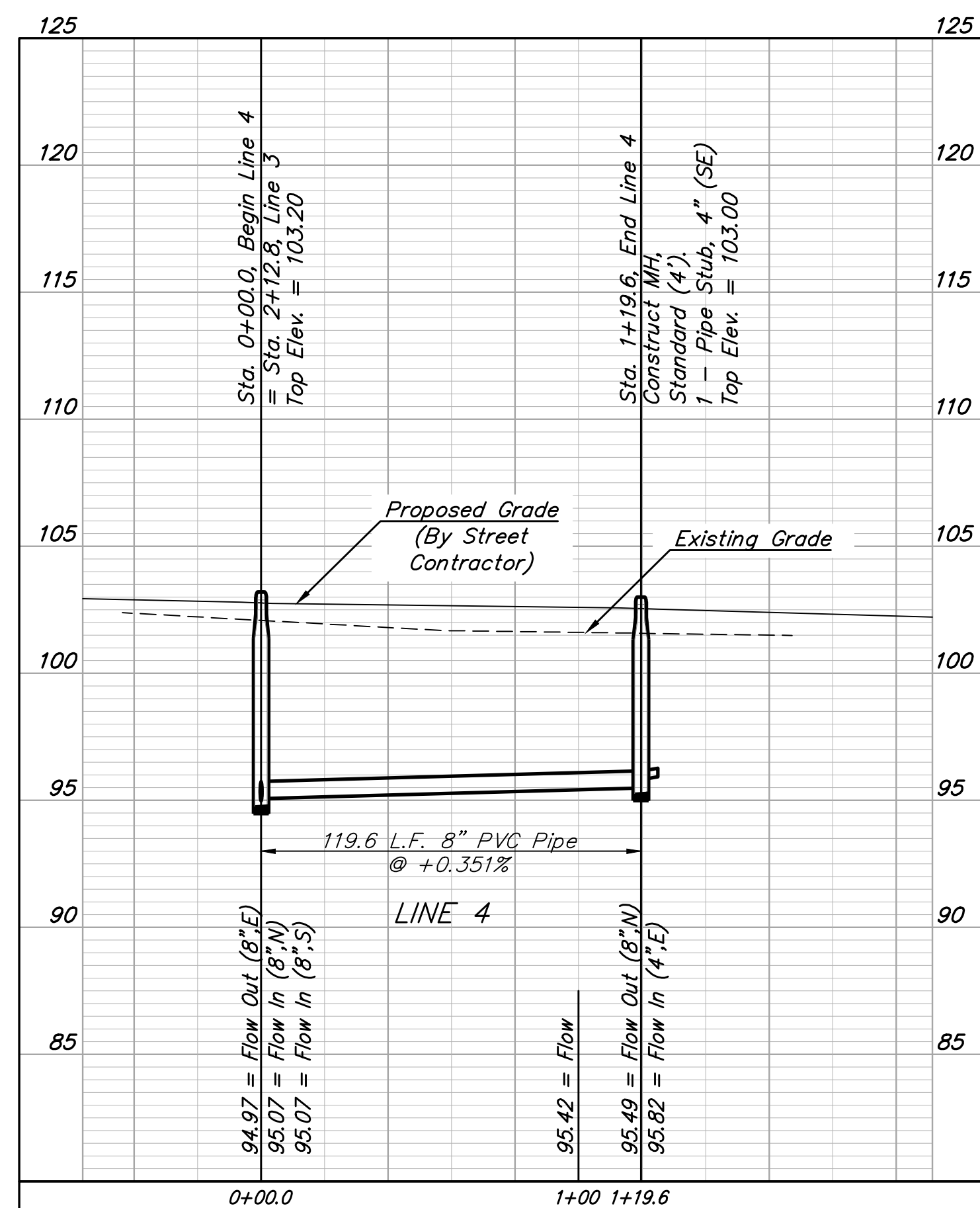
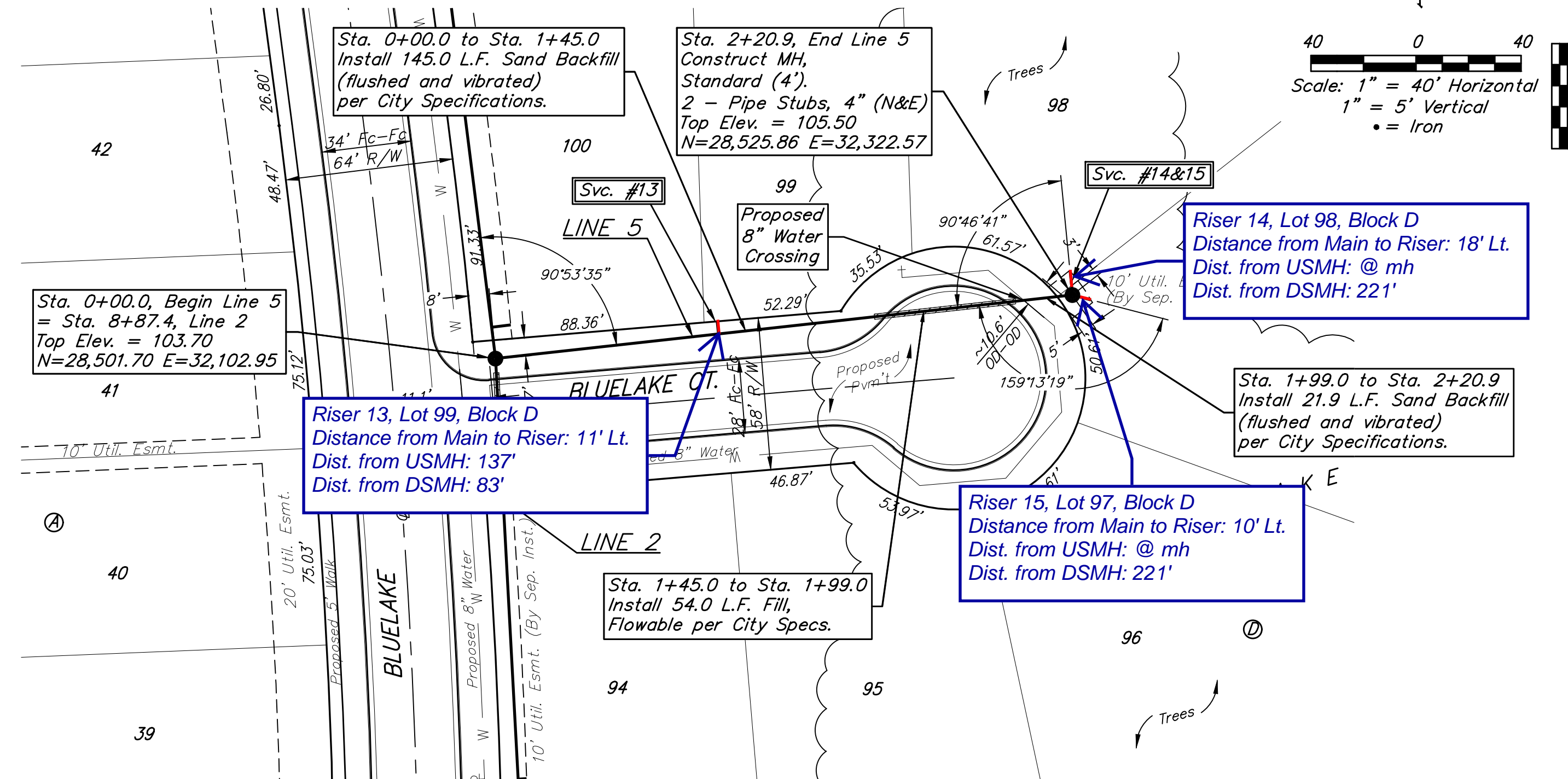
All other trees shall remain and be
 protected from damage during
 construction. Overhanging limbs shall be
 trimmed by the Contractor using a chain
 saw only as necessary for construction
 and with approval of the Engineer. Cost
 of tree trimming to be included in bid
 item "Site Clearing"



SEWER SERVICE TABLE

NUMBER	TYPE	LOCATION			FOR INFORMATION ONLY		
		LOT NO.	BLOCK NO.	LINE NO.	STATION\ DIRECTION	APPROXIMATE LENGTH 4" PIPE	VERTICAL
12	4" Stub	7	A	4	1+19.6/Lt.	-	5.0' 7'
13	8" X 4" Tee W/Riser	99	D	5	0+85.5/Lt.	-	5.3' 11'
14	4" Stub	98	D	5	2+20.9/Lt.	-	9.1' 18'
15	4" Stub	97	D	5	2+20.9/Rt.	-	7.3' 10'

NOTE: Vertical Riser Pipe shall be extended to 2' minimum above ground water elevation and 4' maximum below proposed ground elevation.



**BAUGHMAN
 COMPANY**

315 Ellis St.
 Wichita, KS 67211
 316-262-7271
 BaughmanCo.com

BLUE LAKE ADD./2ND ADD.
 PHASE 1

**LINES
 4 & 5**

SANITARY SEWER
 IMPROVEMENTS

PROJECT NUMBER:
 468-2023-003057

DESIGN: DMV DRAWN: TMS
 DATE: 9/25/2023

SHEET 5 OF 17

File: E:\Projects\Blue Lake 2nd Addition\Engineering\Phase 1\SS 23-03-E460\Sewer.dwg

