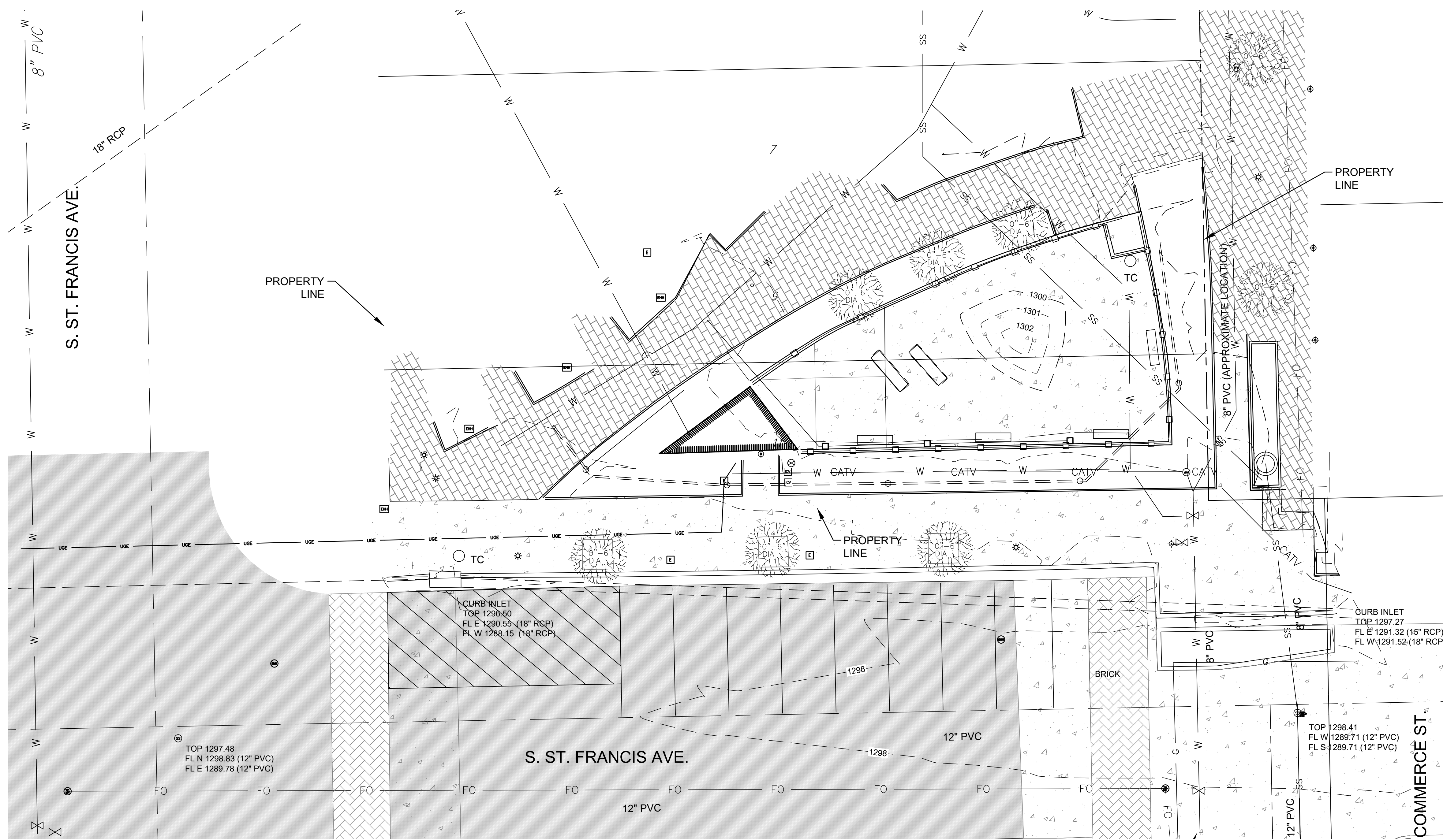


File: L:\2023\F02-2301675 - Wichita Downtown Park Restrooms\Drawings\CAD_BIM_Sheets\Nafziger Park Restrooms\Drawings\CAD_BIM_Sheets\Nafziger Park Restrooms.dwg Last Saved: 5/20/2024 2:39 PM Last saved by: CjWyant
 Last plotted by: Wyant, Charles J. (CJ) Plot Style: --- Plot Scale: 1:1 Plot Date: 5/20/2024 2:41 PM Plotter used: AutoCAD PDF (General Documentation).pc3



LEGEND	
	FIRE HYDRANT
	WATER VALVE BOX
	WATER METER
	IRRIGATION CONTROL VALVE
	FIBER OPTIC MANHOLE
	GROUND LIGHT
	ELECTRIC BOX
	LIGHT POLE
	ELECTRIC MANHOLE
	STORMWATER SEWER CATCH BASIN
	DECIDUOUS TREE 18" AND ABOVE
	DECIDUOUS TREE 6-18" DIA
	DECIDUOUS TREE 0-6" DIA
	BENCHMARK

LEGEND	
	EXISTING ASPHALT PAVEMENT
	EXISTING BRICK PAVEMENT
	EXISTING STAMPED CONCRETE PAVEMENT
	EXISTING CONCRETE PAVEMENT
	EXISTING BUILDING FOOTPRINT

1 EXISTING CONDITIONS
SCALE: 1" = 10'

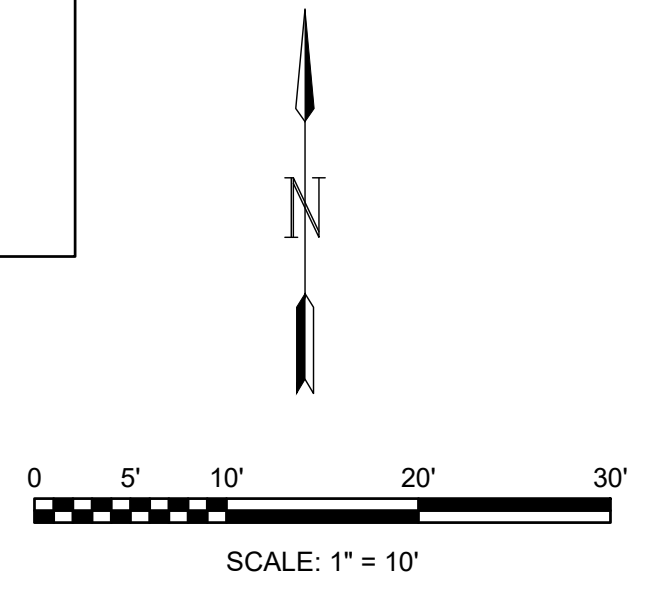
UTILITY CONTACTS	
THE CONTRACTOR MUST NOTIFY THE FOLLOWING IN CASE OF AN EMERGENCY:	
KANSAS GAS SERVICE (GAS).....	1-888-482-4950
BLACK HILLS ENERGY (GAS).....	1-800-303-0357
EVERGY (ELECTRIC).....	383-8650
COX COMMUNICATIONS (TELECOMMUNICATIONS).....	262-4270
AT&T (TELECOMMUNICATIONS).....	268-2759
CITY OF WICHITA WATER DEPT. (WATER).....	268-4563
	OR 268-4908
CITY OF WICHITA SEWER MAINT. (SAN. SEWER).....	268-4024
	OR 262-6000
CITY OF WICHITA STORM SEWER MAINT. (STORM SEWER).....	268-4090
CITY OF WICHITA TRAFFIC MAINT. (TRAF. CONTROL).....	268-4034
	OR 268-4203
CONOCO PIPELINE CO. (PETROLEUM).....	1-800-231-2551
WILLIAMS PIPELINE CO. (PETROLEUM).....	529-6600
	OR 1-800-324-9696
PHILLIPS PIPELINE CO. (PETROLEUM).....	1-800-766-8230

KANSAS ONE CALL
 CONTRACTOR SHALL BE REQUIRED TO PROVIDE NOTICE TO KANSAS ONE CALL AT 287-2470 A MINIMUM OF THREE (3) WORKING DAYS PRIOR TO ANY EXCAVATION OR WORK ADJACENT TO UTILITIES.
 KANSAS ONE CALL 1-800-DIG-SAFE

BENCHMARKS
 CHISELED SQUARE ON TOP OF CURB ON THE SOUTH CURB RETURN AT THE SOUTHEAST CORNER OF ST. FRANCIS AND WILLIAMS ST.
 ELEV. = 1297.49 (NAVD88)

LEGAL DESCRIPTION
 LOTS 7-9, VACANT ALLEY & ADJACENT LOTS ON THE EAST EXCEPT THE POINT DESCRIBED AS BEGINNING AT SOUTHWEST CORNER OF 12 THEN WEST 1.65 FEET NORTH, 75 FEET M/L, 1.78 FEET TO THE NORTHWEST CORNER OF LOT 8, THEN SOUTH 75 FEET TO THE BEGINNING 4TH, NOW ST FRANCIS AVE ENGLISH'S ADDITION. EXEMPT NO. 1998-6592-TX

LEGEND	
	PROPERTY LINE
	SANITARY SEWER (CITY OF WICHITA)
	STORMWATER DRAIN (CITY OF WICHITA)
	UNDERGROUND ELECTRIC (EVERGY)
	UNDERGROUND CABLE TELEVISION (COX COMMUNICATIONS)
	UNDERGROUND FIBER OPTIC
	WATER LINE (CITY OF WICHITA)



© 2023 GARVER, LLC
 THIS DOCUMENT, ALONG WITH THE IDEAS AND DESIGNS CONVEYED HEREIN, SHALL BE CONSIDERED INSTRUMENTS OF PROFESSIONAL SERVICE AND ARE PROPERTY OF GARVER, LLC. ANY USE, REPRODUCTION, OR DISTRIBUTION OF THIS DOCUMENT, ALONG WITH THE IDEAS AND DESIGN CONTAINED HEREIN, IS PROHIBITED UNLESS AUTHORIZED IN WRITING BY GARVER, LLC OR EXPLICITLY ALLOWED IN THE GOVERNING PROFESSIONAL SERVICES AGREEMENT FOR THIS WORK.
 1995 Midfield Road
 Wichita, KS 67209
 (316) 264-8008

REV.	DATE	DESCRIPTION	BY

CITY OF WICHITA
 WICHITA, KS 67202
 2024 PARK FACILITY ENHANCEMENTS-NAFTZGER PARK RESTROOMS PROJECT

EXISTING CONDITIONS

JOB NO.: F02-2301675
 DATE: MAR. 2024
 DESIGNED BY: SRS
 DRAWN BY: JSB

BAR IS ONE INCH ON ORIGINAL DRAWING
 IF NOT ONE INCH ON THIS SHEET, ADJUST SCALES ACCORDINGLY.

DRAWING NUMBER
VF101

SHEET NUMBER
3