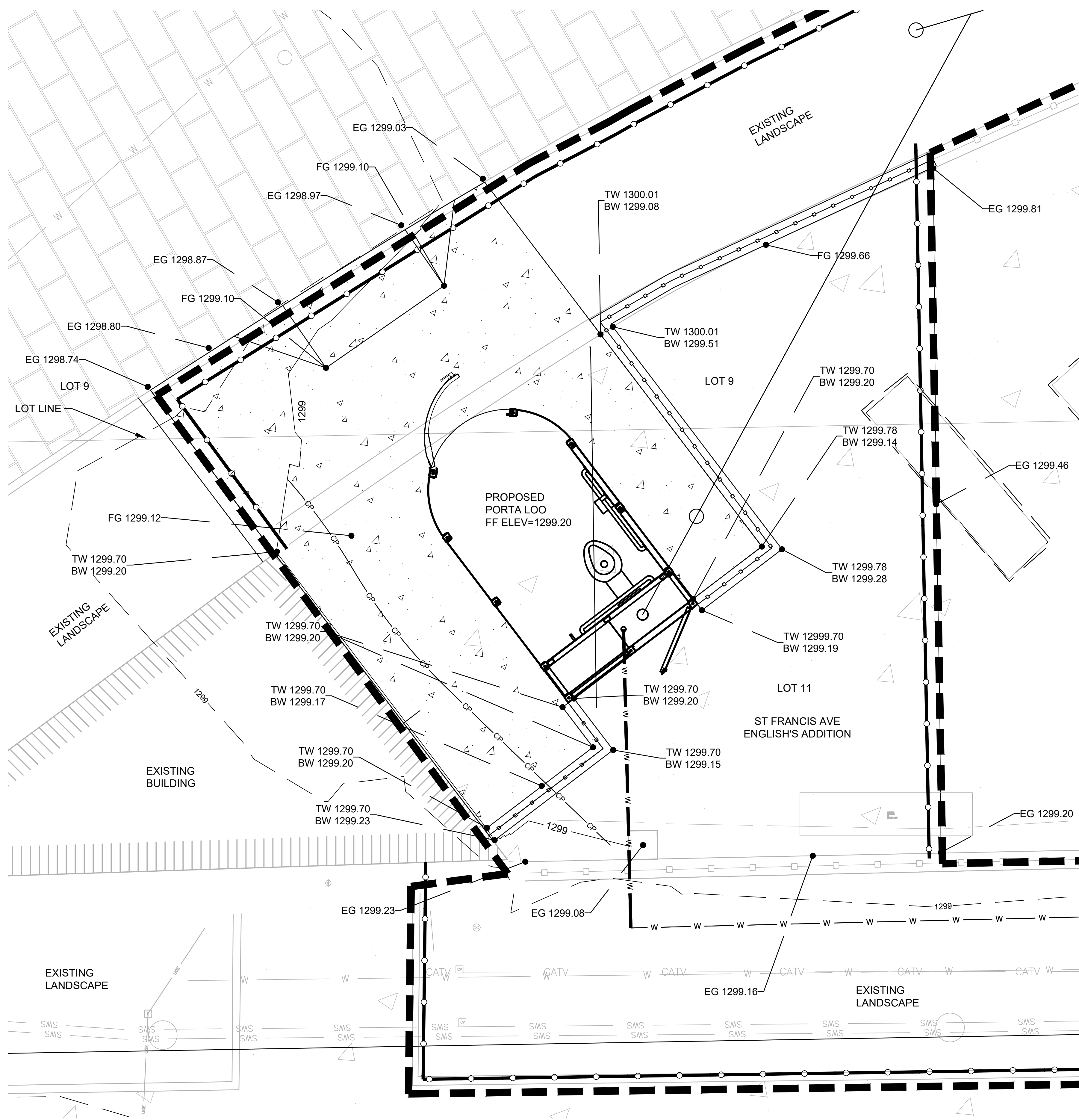


File: L:\2023\F02-2301675 - Wichita Downtown Park Restrooms\Drawings\CAD BIM\ Sheets\Naitzger Park\WDRN_CG101 GRADING PLAN.dwg Last Save: 3/20/2024 1:46 PM Last saved by: CjWyant
 Last plotted by: Wyant, Charles J. (Cj) Plot Date: 5/20/2024 2:41 PM Plotter used: AutoCAD PDF (General Documentation).pc3



BENCHMARKS

CHISELED SQUARE ON TOP OF CURB ON THE SOUTH CURB RETURN AT THE SOUTHEAST CORNER OF ST. FRANCIS AND WILLIAMS ST.

ELEV. = 1297.49 (NAVD88)

GENERAL GRADING NOTES

1. THE CONTRACTOR IS RESPONSIBLE FOR ADEQUATE EROSION CONTROL MEASURES. THESE MEASURES WILL SATISFY THE REQUIREMENTS OF THE MISSOURI STATE GENERAL PERMIT. EROSION CONTROL DEVICES WILL BE MAINTAINED UNTIL PERMANENT GROUND COVER IS ESTABLISHED.
2. RESTORE LANDSCAPES DISTURBED BY CONSTRUCTION PER THE LANDSCAPE PLAN ON SHEET LS-101
3. CONTRACTOR SHALL EMPLOY A QUALIFIED MATERIALS TESTING LABORATORY, ACCEPTABLE TO THE ENGINEER, TO PROVIDE TESTING SERVICES DURING CONSTRUCTION. TEST RESULTS SHALL BE PROMPTLY SENT TO THE OWNER/ENGINEER.
4. CONTRACTOR SHALL MAINTAIN BENCHMARKS ON SITE UNTIL THE END OF CONSTRUCTION.
5. IT IS INCUMBENT UPON THE CONTRACTOR TO FIELD VERIFY THE EXISTING CONDITIONS PRIOR TO BEGINNING CONSTRUCTION. EXISTING UTILITIES SHALL BE MARKED THROUGH THE KANSAS ONE-CALL SYSTEM. SHOULD SIGNIFICANT DISCREPANCIES BE FOUND, IMMEDIATELY NOTIFY THE OWNER AND ENGINEER OF RECORD.
6. THE CONTRACTOR IS RESPONSIBLE FOR OBTAINING ALL GRADING RELATED PERMITS PRIOR TO BEGINNING EARTHWORK.

LEGEND

	1299	MINOR CONTOUR
	1300	MAJOR CONTOUR
	1299	EXISTING MINOR CONTOUR
	1300	EXISTING MAJOR CONTOUR
		LIMITS OF CONSTRUCTION
	EG 99.00	EXISTING PAVEMENT ELEVATION 40.22
	FG 99.20	PROPOSED PAVEMENT ELEVATION
	TW 39.02 BW 37.02	TOP OF WALL ELEVATION BOTTOM OF WALL ELEVATION



© 2023 GARVER, LLC
 THIS DOCUMENT, ALONG WITH THE IDEAS AND DESIGNS CONVEYED HEREIN, SHALL BE CONSIDERED INSTRUMENTS OF PROFESSIONAL SERVICE AND ARE PROPERTY OF GARVER, LLC. ANY USE, REPRODUCTION, OR DISTRIBUTION OF THIS DOCUMENT, ALONG WITH THE IDEAS AND DESIGN CONTAINED HEREIN, IS PROHIBITED UNLESS AUTHORIZED IN WRITING BY GARVER, LLC OR EXPLICITLY ALLOWED IN THE GOVERNING PROFESSIONAL SERVICES AGREEMENT FOR THIS WORK.

1995 Midfield Road
 Wichita, KS 67209
 (316) 264-8008



REV.	DATE	DESCRIPTION	BY

REV.	DATE	DESCRIPTION	BY

CITY OF WICHITA
 WICHITA, KS 67202

2024 PARK FACILITY ENHANCEMENTS- NAITZGER PARK RESTROOMS PROJECT

GRADING PLAN

JOB NO.: F02-2301675
 DATE: MAR. 2024
 DESIGNED BY: SRS
 DRAWN BY: JSB

BAR IS ONE INCH ON ORIGINAL DRAWING
 IF NOT ONE INCH ON THIS SHEET, ADJUST SCALES ACCORDINGLY.

DRAWING NUMBER
CG101

SHEET NUMBER
6

1 GRADING PLAN
 SCALE: 1/2" = 1'-0"

