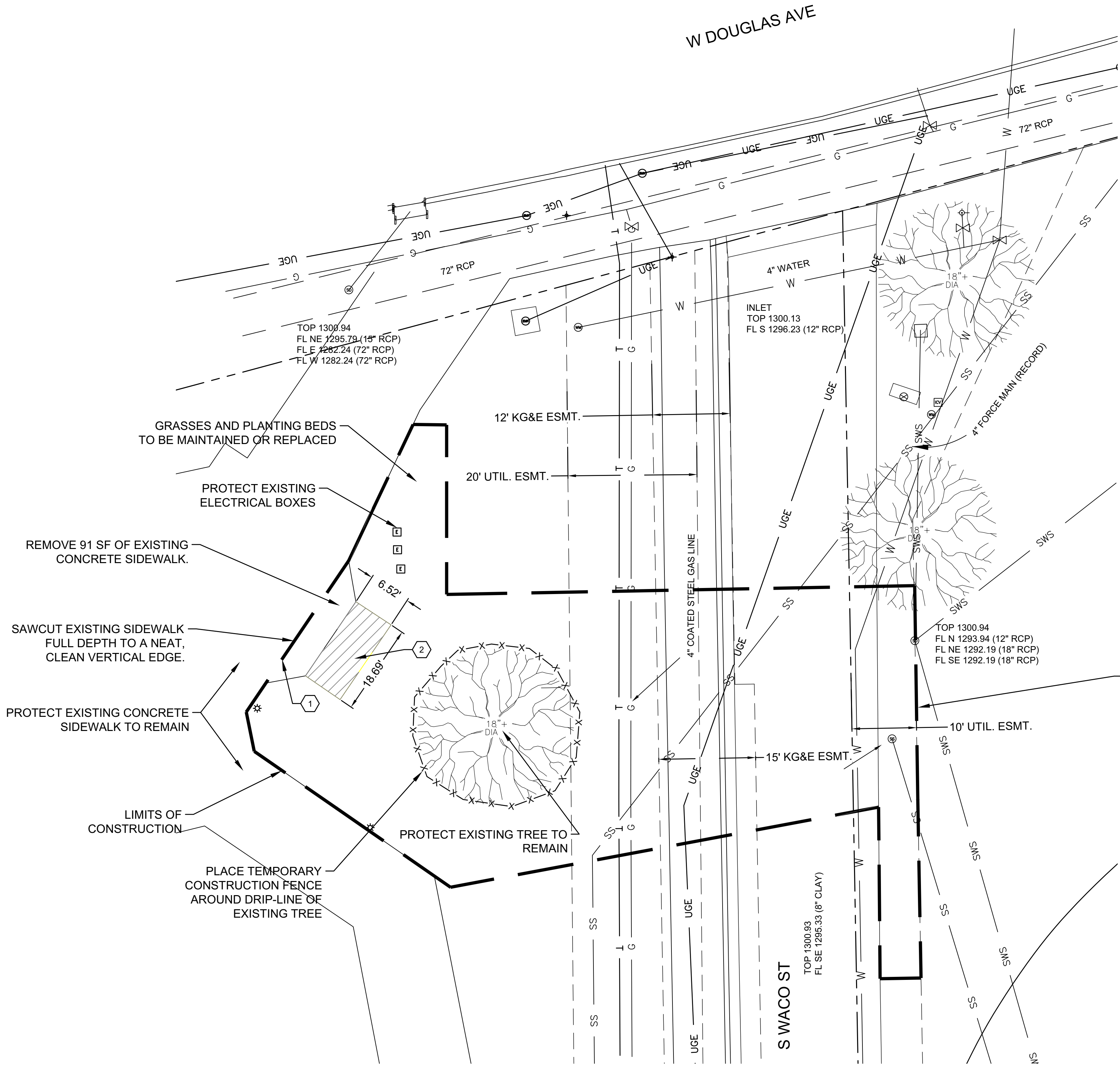


File: I:\2023\102-2301675 - wchita downtown park restrooms\Drawings\CAD_BIM\ Sheets\A. Price Woodard\WDRA_CD101-DEMO PLAN.dwg Last Save: 5/20/2024 3:00 PM Last saved by: CJW\want
Last plotted by: Wyant, Charles J. (CJ) Plot Style: --- Plot Scale: 1:1 Plot Date: 5/20/2024 3:04 PM Plotter used: AutoCAD PDF (General Documentation).pc3



1 DEMOLITION PLAN
SCALE: 1" = 10'

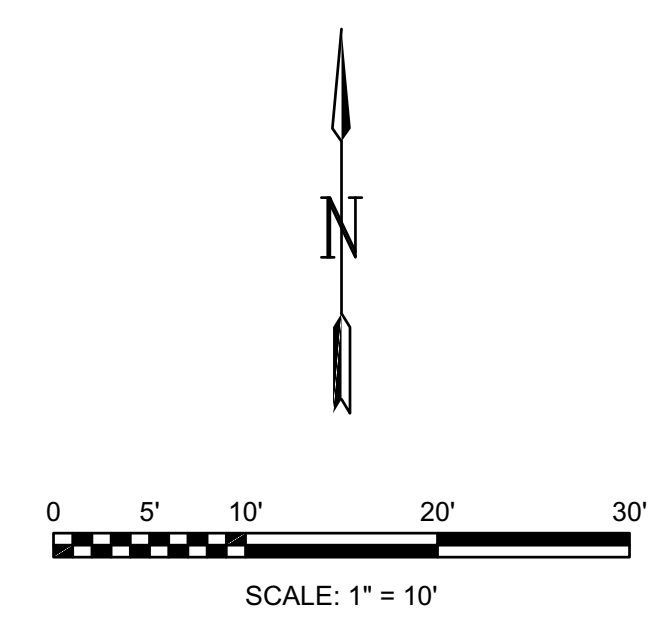
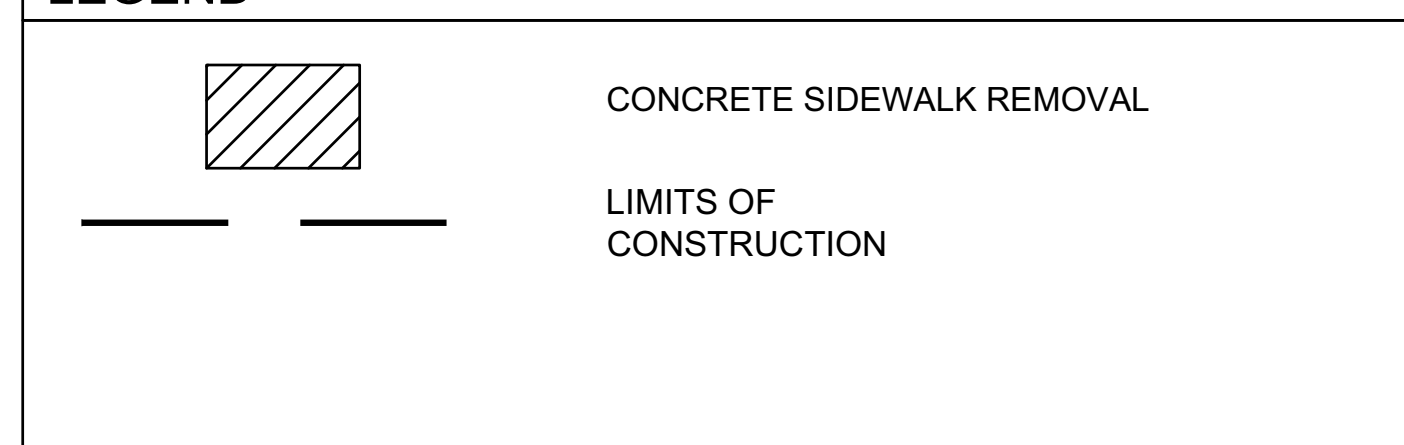
DEMOLITION NOTES

- CAUTION: UNDERGROUND UTILITIES LIE WITHIN AND ADJACENT TO THE LIMITS OF CONSTRUCTION. AN ATTEMPT HAS BEEN MADE TO LOCATE THESE UTILITIES ON THE PLANS, HOWEVER ALL EXISTING UTILITIES MAY NOT BE SHOWN AND THE ACTUAL LOCATIONS OF THE UTILITIES MAY VARY FROM THE LOCATIONS SHOWN. PRIOR TO BEGINNING ANY TYPE OF EXCAVATION THE CONTRACTOR SHALL MARK THE VISIBLE UTILITIES & THE UTILITIES SHOWN ON THE PLANS IN THE FIELD. THE CONTRACTOR SHALL MAINTAIN THE UTILITY LOCATION MARKING UNTIL THEY ARE NO LONGER NECESSARY. USE EXTREME CAUTION WHEN EXCAVATING. COORDINATE UTILITY LOCATIONS WITH KANSAS ONE CALL.
- THE CONTRACTOR IS RESPONSIBLE FOR THE APPROPRIATE BARRICADES AND SAFETY PRECAUTIONS IN ALL EXCAVATED AREAS. EXCAVATED AREAS SHALL BE ADEQUATELY FILLED OR COVERED BY THE CONTRACTOR BEFORE LEAVING THE JOBSITE EACH DAY.
- CONTRACTOR IS RESPONSIBLE FOR ANY DAMAGE CAUSED TO EXISTING STRUCTURES, PAVEMENTS, AND UTILITIES.
- CONTRACTOR SHALL PROVIDE TEMPORARY ACCESS TO THE SITE DURING CONSTRUCTION.
- THE CONTRACTOR SHALL MAINTAIN THE SITE IN AN ORDERLY AND CLEAN FASHION.
- PROTECT EXISTING TREES DURING DEMOLITION AND EXCAVATION ACTIVITIES. DO NOT STORE MATERIALS, DRIVE WITHIN, OR EXCAVATE WITHIN DRIP-LINE. HAND DIG ONLY WHEN NECESSARY.
- PROTECT EXISTING PARK IMPROVEMENTS DURING ALL DEMOLITION AND CONSTRUCTION ACTIVITIES. LAY PLYWOOD OVER EXISTING PAVEMENTS WHERE VEHICLES WILL DRIVE OVER THEM TO PREVENT SURFACE MARRING.
- ALL WASTE MATERIALS GENERATED FROM CONSTRUCTION BECOME THE PROPERTY OF THE CONTRACTOR. THE CONTRACTOR SHALL REMOVE THE WASTE MATERIALS FROM THE SITE AND DISPOSE OF IN A LEGAL MANNER.
- CONTRACTOR SHALL COORDINATE WORK ON ALL UTILITIES PRIOR TO DEMOLITION/RENOVATION. THESE UTILITIES SHALL INCLUDE (BUT ARE NOT LIMITED TO) WATER, NATURAL GAS, ELECTRIC, SANITARY SEWER, AND COMMUNICATIONS LINES. PROVIDE NOTICE TO THE OWNER PRIOR TO ANY DISRUPTION IN SERVICE.
- ALL PAVEMENTS TO BE REMOVED SHALL BE SAW CUT IN A NEAT AND ORDERLY MANNER TO FACILITATE DEMOLITION. SAW CUT SIDEWALKS TO NEAREST JOINT.

KEYNOTES

- ① SAW CUT EXISTING SIDEWALK TO A NEAT, CLEAN VERTICAL EDGE.
- ② REMOVE EXISTING SIDEWALK.

LEGEND



Wichita-Sedgwick County
Metropolitan Area Building
and Construction Department
SUBMITTED TO: COMPLETION OF THESE



© 2023 GARVER, LLC
THIS DOCUMENT, ALONG WITH THE IDEAS AND DESIGNS CONVEYED HEREIN, SHALL BE CONSIDERED INSTRUMENTS OF PROFESSIONAL SERVICE AND ARE PROPERTY OF GARVER, LLC. ANY USE, REPRODUCTION, OR DISTRIBUTION OF THIS DOCUMENT, ALONG WITH THE IDEAS AND DESIGN CONTAINED HEREIN, IS PROHIBITED UNLESS AUTHORIZED IN WRITING BY GARVER, LLC OR EXPLICITLY ALLOWED IN THE GOVERNING PROFESSIONAL SERVICES AGREEMENT FOR THIS WORK.

1995 Midfield Road
Wichita, KS 67209
(316) 264-8008



| REV. | DATE | DESCRIPTION | BY |
|------|------|-------------|----|
| | | | |
| | | | |
| | | | |

CITY OF WICHITA
DEPT. OF PARKS AND RECREATION
WICHITA, KS 67202

2024 PARK FACILITY
ENHANCEMENTS-
A. PRICE WOODARD
RESTROOMS PROJECT

DEMOLITION PLAN

JOB NO.: F02-2301675
DATE: FEB. 2024
DESIGNED BY: SRS
DRAWN BY: CJW

BAR IS ONE INCH ON ORIGINAL DRAWING
IF NOT ONE INCH ON THIS SHEET, ADJUST SCALES ACCORDINGLY.

DRAWING NUMBER
CD101

SHEET NUMBER
4