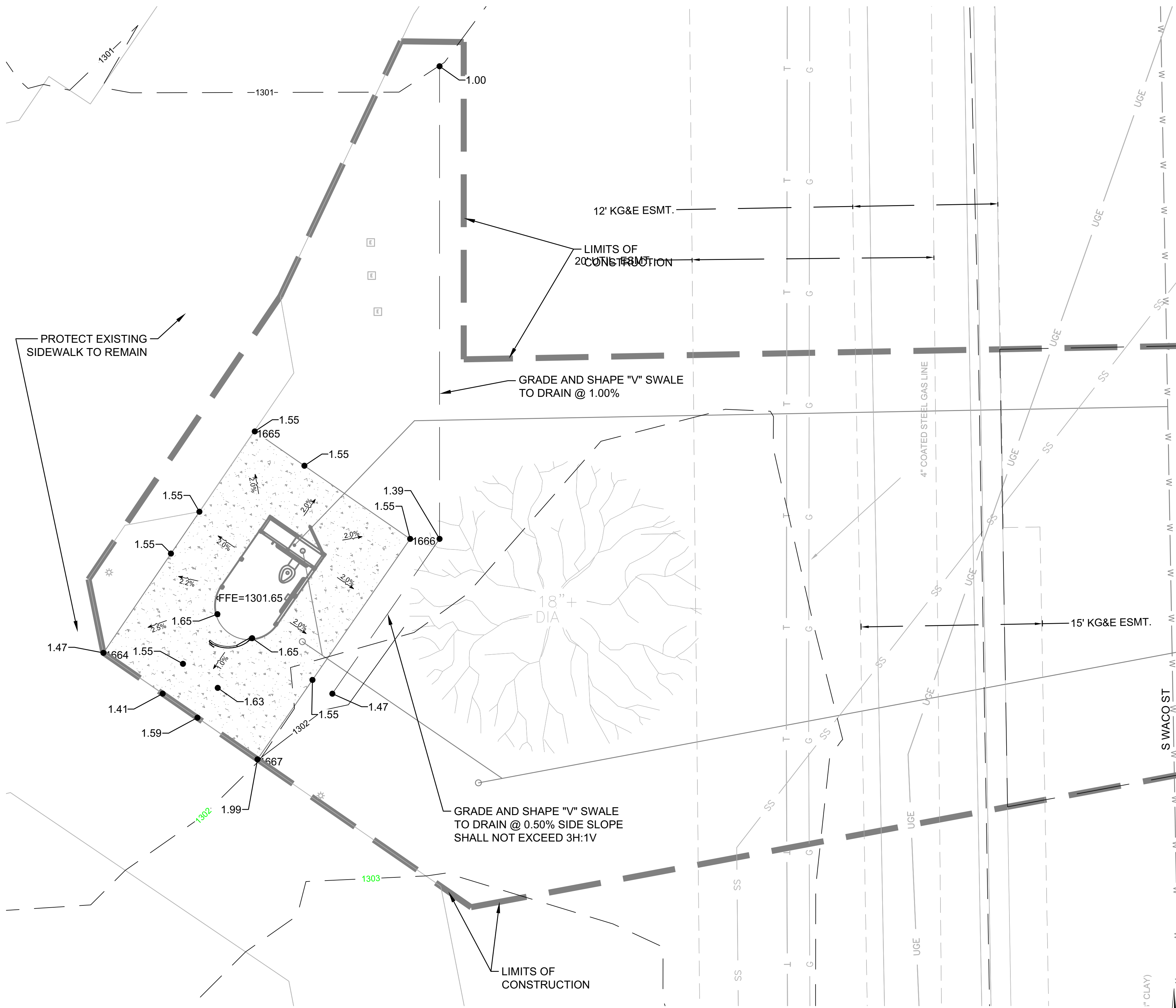


File: I:\2023\102-2301675 - wchita downtown park restrooms\Drawings\CAD_BIM\ Sheets\A. Price Woodard\WDRA_CG101-GRADING PLAN.dwg Last Save: 5/20/2024 3:01 PM Last saved by: C:\Wyant
 Last plotted by: Wyant, Charles J. (CJ) Plot Style: --- Plot Scale: 1:1 Plot Date: 5/20/2024 3:05 PM Plotter used: AutoCAD PDF (General Documentation).pc3



LEGEND

	730	MINOR CONTOUR
	740	MAJOR CONTOUR
	739	EXISTING MINOR CONTOUR
	740	EXISTING MAJOR CONTOUR
		LIMITS OF CONSTRUCTION
	35.99	TOP OF PAVEMENT ELEVATION

Wichita Sedgewick County
 Metropolitan Area Building
 and Construction Department
REVIEWED FOR CODE COMPLIANCE
 CORRECTIONS OR COMMENTS MADE ON THESE DRAWINGS
 AND THIS DOCUMENT DURING THIS REVIEW DO NOT RELIEVE
 CONTRACTOR FROM COMPLIANCE WITH ALL REQUIREMENTS
 OF THE CODE OF THE MARCD, THE CITY OF WICHITA OR
 SEDGWICK COUNTY. THIS REVIEW IS ONLY FOR GENERAL
 COMPLIANCE OF THE CODE. THE CONTRACTOR IS
 RESPONSIBLE FOR CONFORMING AND CORRELATING ALL
 TECHNIQUES OF CONSTRUCTION. THIS APPROVAL IS
 SUBJECT TO PROVISIONS OF SECTION 197.4 OF THE 2012
 INTERNATIONAL BUILDING CODE.
 DATE: 07/29/24 BY: William Jerauld Jr



© 2023 GARVER, LLC
 THIS DOCUMENT, ALONG WITH THE
 IDEAS AND DESIGNS CONVEYED
 HEREIN, SHALL BE CONSIDERED
 INSTRUMENTS OF PROFESSIONAL
 SERVICE AND ARE PROPERTY OF
 GARVER, LLC. ANY USE,
 REPRODUCTION, OR DISTRIBUTION
 OF THIS DOCUMENT, ALONG WITH
 THE IDEAS AND DESIGN CONTAINED
 HEREIN, IS PROHIBITED UNLESS
 AUTHORIZED IN WRITING BY
 GARVER, LLC OR EXPLICITLY
 ALLOWED IN THE GOVERNING
 PROFESSIONAL SERVICES
 AGREEMENT FOR THIS WORK.

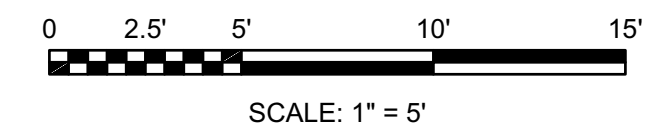
1995 Midfield Road
 Wichita, KS 67209
 (316) 264-8008



GRADING NOTES

1. THE CONTRACTOR IS RESPONSIBLE FOR ADEQUATE EROSION CONTROL MEASURES. THESE MEASURES WILL SATISFY THE REQUIREMENTS OF THE CITY OF WICHITA AND KDHE. EROSION CONTROL DEVICES WILL BE MAINTAINED UNTIL PERMANENT GROUND COVER IS ESTABLISHED.
2. HYDROSEED OR SOD, FERTILIZE AND MULCH AREAS DISTURBED BY CONSTRUCTION (EXCEPT AREAS TO BE PAVED). COMPLY WITH THE STANDARDS SET FORTH IN THE THE STANDARD SPECIFICATIONS. SEE LANDSCAPE PLANS/SPECS FOR GROUND COVER REQUIREMENTS.
3. CONTRACTOR SHALL EMPLOY A QUALIFIED MATERIALS TESTING LABORATORY, ACCEPTABLE TO THE ENGINEER, TO PROVIDE TESTING SERVICES DURING CONSTRUCTION. TEST RESULTS SHALL BE PROMPTLY SENT TO THE OWNER/ENGINEER.
4. CONTRACTOR SHALL MAINTAIN BENCHMARKS ON SITE UNTIL THE END OF CONSTRUCTION.
5. IT IS INCUMBENT UPON THE CONTRACTOR TO FIELD VERIFY THE EXISTING CONDITIONS PRIOR TO BEGINNING CONSTRUCTION. A TOPOGRAPHIC SURVEY INCLUDING UTILITY ROUTES AND TIE-INS, PAVEMENTS, STRUCTURES, AND GRADES SHALL BE CONDUCTED BY THE CONTRACTOR. SHOULD SIGNIFICANT DISCREPANCIES BE FOUND, IMMEDIATELY NOTIFY THE CONTRACTING OFFICER AND ENGINEER OF RECORD.
6. THE CONTRACTOR IS RESPONSIBLE FOR OBTAINING ALL GRADING RELATED PERMITS PRIOR TO BEGINNING EARTHWORK.

1 GRADING PLAN
 SCALE: 1" = 5'



REV.	DATE	DESCRIPTION	BY

CITY OF WICHITA
 DEPT. OF PARKS AND RECREATION
 WICHITA, KS 67202
 2024 PARK FACILITY
 ENHANCEMENTS-
 A. PRICE WOODARD
 RESTROOMS PROJECT

GRADING PLAN

JOB NO.: F02-2301675
 DATE: FEB. 2024
 DESIGNED BY: SRS
 DRAWN BY: CJW

BAR IS ONE INCH ON ORIGINAL DRAWING
 IF NOT ONE INCH ON THIS SHEET, ADJUST SCALES ACCORDINGLY.

DRAWING NUMBER
CG101

SHEET NUMBER
6