


BENCHMARKS:
 BM #1: Square cut on back of sidewalk, approximately 550.4 feet east of the southwest corner of Lot 1, Bryant-Hadley Addition, Wichita, Sedgwick County, Kansas. Elevation = 1313.14 (NAVD 88)

BM #2: Square cut on back of sidewalk, approximately on the southwest corner of Lot 1, Bryant-Hadley Addition, Wichita, Sedgwick County, Kansas. Elevation = 1312.39 (NAVD 88)

AS BUILTS



KEMILLER
ENGINEERING PA

117 E. Lewis,
Wichita, KS 67202 (316)264-0242

Reference Point:
Centerline of Baehr Street and Centerline of 9th Street

City maintenance of water mains ends at right-of-way.

72.00 L.F. 8" Pipe by directional drilling

Saw cut, remove and replace existing sidewalk with temporary replacement as necessary for water line construction in accordance with General Note #30, cover sheet.

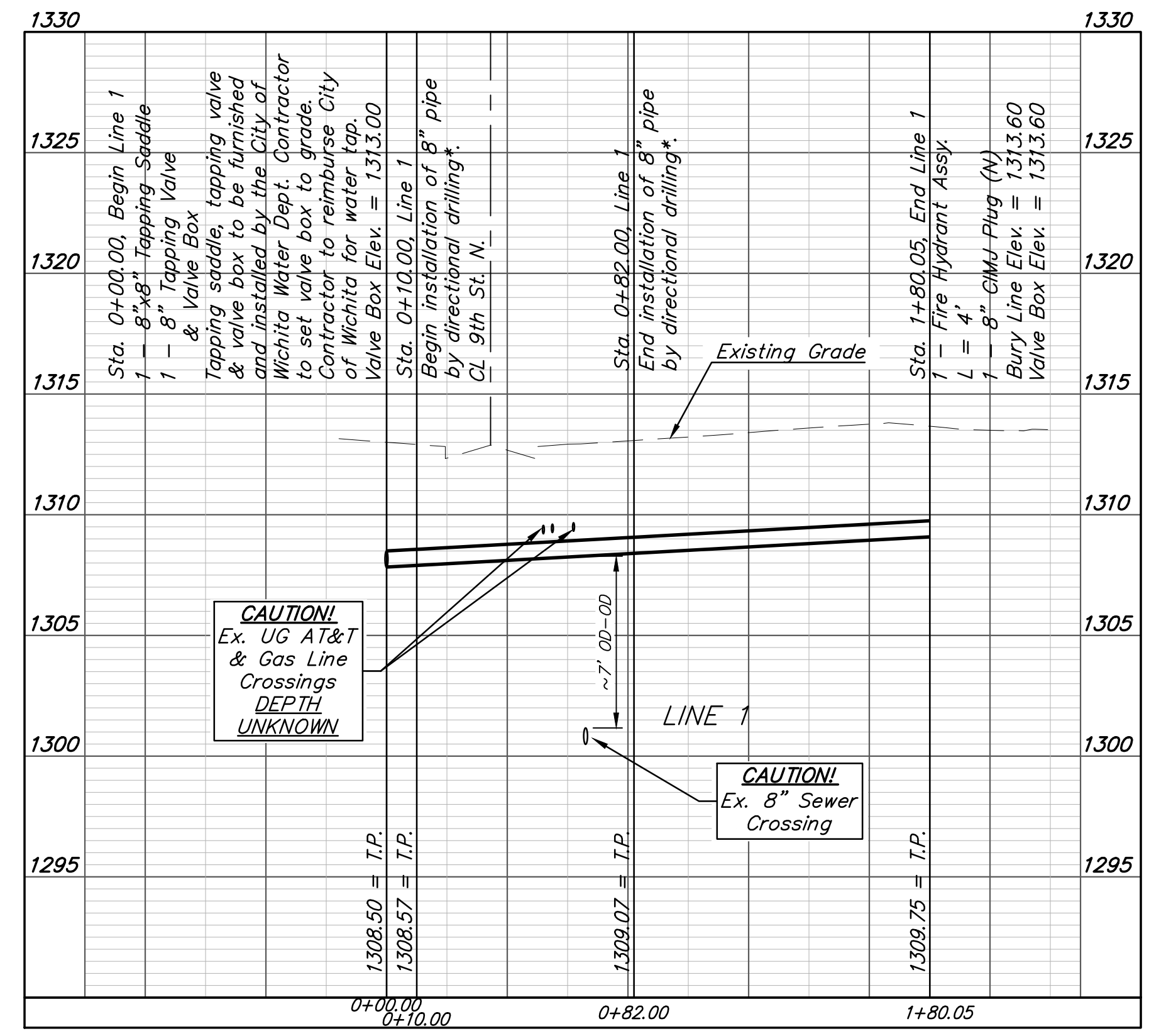
10.00 L.F. 8" DICL Pipe

Sta. 0+00.00, Begin Line 1
1 - 8"x8" Tapping Saddle
1 - 8" Tapping Valve & Valve Box
Tapping saddle, tapping valve & valve box to be furnished and installed by the City of Wichita Water Dept. Contractor to set valve box to grade. Contractor to reimburse City of Wichita for water tap. Valve Box Elev. = 1313.00
N=1,691,039.93 E=1,631,271.31

Sta. 0+10.00, Line 1
Begin installation of 8" pipe by directional drilling*
N=1,691,049.93 E=1,631,271.32

*All connections to directional drill pipe must be restrained joint

9TH ST. N.



DEPTH UNKNOWN
Contractor to Verify Depth & Location of Existing Water Line Prior to Construction.

CAUTION!
Ex. UG AT&T & Gas Line Crossings

71' West 143' North to Hydrant valve

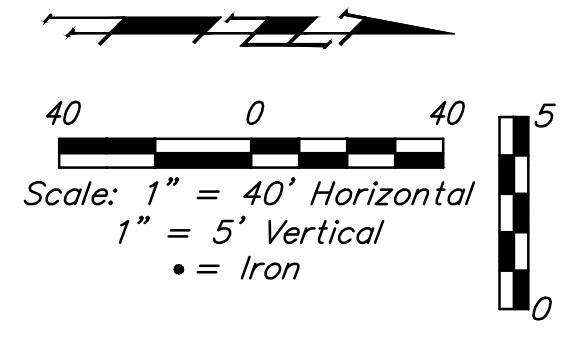
73' West 145' North to hydrant

69' West 143' North to Tee (Plugged)

Sta. 0+82.00, Line 1
End installation of 8" pipe by directional drilling*
N=1,691,121.93 E=1,631,271.37

Saw cut, remove and replace existing asphalt pavement with permanent replacement as necessary for water line construction.

Remove and replace existing fence as necessary for water line construction.



Contractor to verify depth and location of existing utilities. Contractor to relocate any existing utilities as necessary for construction.

Contractor to maintain a minimum of 2' of vertical separation (O.D.-O.D.) between sanitary sewer and water line.

1
BRYANT
HADLEY
ADDITION



BAUGHMAN COMPANY

315 Ellis St.
Wichita, KS 67211
316-262-7271
BaughmanCo.com

BRYANT OPPORTUNITY ACADEMY

LINE 1

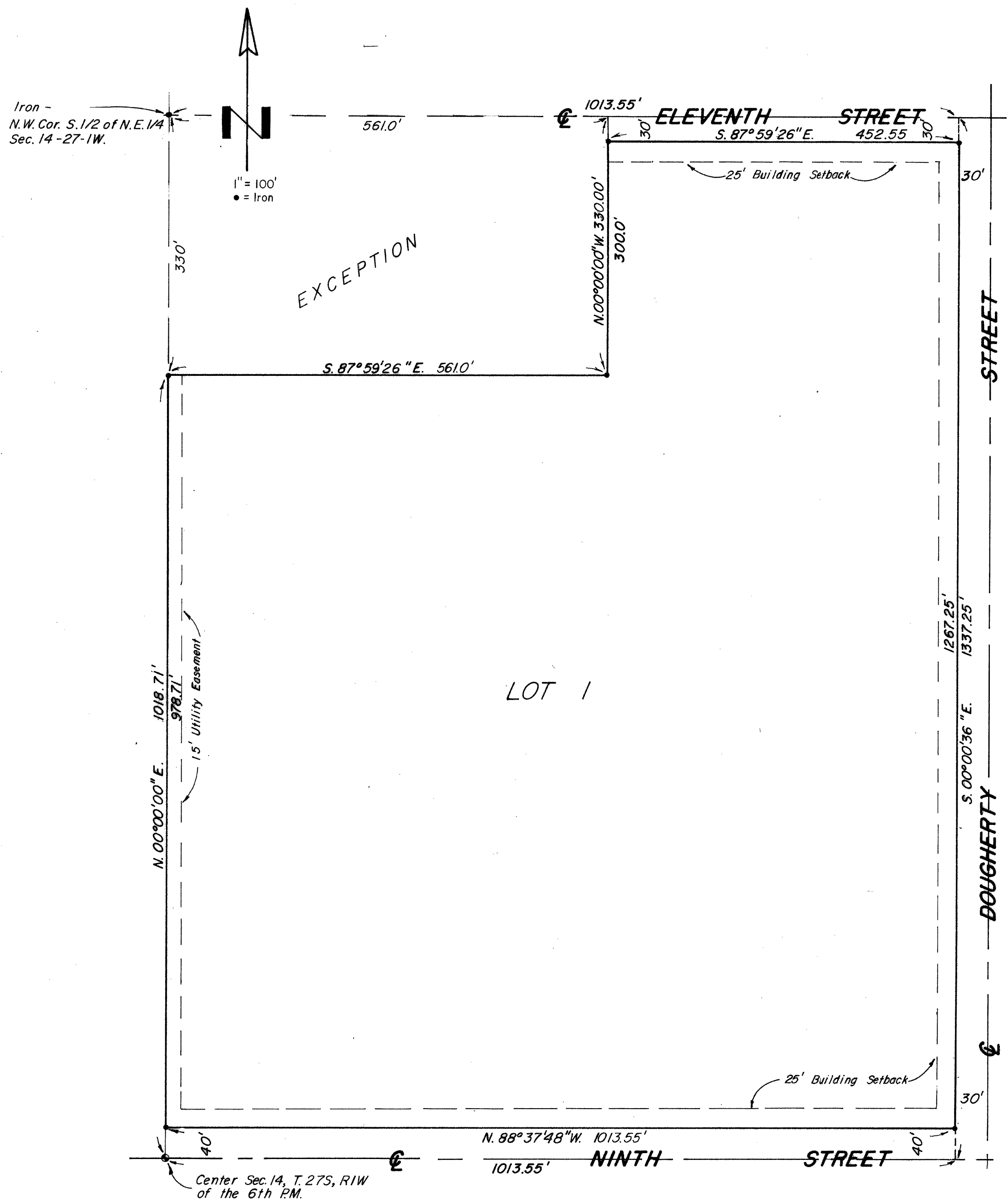
WATER DISTRIBUTION SYSTEM

PROJECT NUMBER:
22-01-E106

DESIGN: TJW DRAWN: TMS
DATE: October 27, 2022

SHEET OF
2 11

File: E:\Projects\USD 259 Bryant Elementary\Engineering\Phase 1\PPWP\PPW.dwg



BRYANT - HADLEY ADDITION

TO WICHITA, SEDGWICK COUNTY, KANSAS

STATE OF KANSAS, COUNTY OF SEDGWICK, SS:

I, Don C. Moehring II, a Civil Engineer in said State and County, do hereby certify that I have surveyed and platted "BRYANT-HADLEY ADDITION" to Wichita, Sedgwick County, Kansas, into a Lot, the same being accurately set forth on the accompanying plat and described as follows: The West 1013.55' of the South half of the Northeast 1/4 of Sec. 14, T. 27S., R. 1W. of the 6th P.M., Sedgwick County, Kansas, except the North 330.0' of the West 561.0' thereof.



Don C. Moehring II
18 August 1976
Consulting Engineer

Know all men by these presents that we the undersigned, property owners of the land as above set forth in the Civil Engineer's certificate, have caused the same to be surveyed and platted into a Lot, the same to be known as "BRYANT-HADLEY ADDITION" to Wichita, Sedgwick County, Kansas. Easements for the construction and maintenance of public utilities, as indicated on the accompanying plat, are hereby granted.



UNIFIED SCHOOL DISTRICT NO. 259 (WICHITA), SEDGWICK COUNTY, KANSAS.
Gary N. Pottorff, President
Keith L. Kauffman, Clerk

STATE OF KANSAS, COUNTY OF SEDGWICK, SS:

Be it remembered that on this 1st day of September, 1976, before me, a Notary Public in and for said State and County, came Unified School District No. 259 (Wichita), Sedgwick County, Kansas, by Gary N. Pottorff, President, and Keith L. Kauffman, Clerk, to me personally known to be the same persons who executed the foregoing instrument of writing and duly acknowledged the execution of the same. In testimony whereof I have hereunto set my hand and affixed my notarial seal the day and year above written.

Eleanor Lundgren, Notary Public
My Commission expires September 24, 1980

Entered on transfer record this 9 day of March, 1978.

Dorothy K. White, County Clerk

374433

**FOR REFERENCE ONLY
NOT TO SCALE**

This plat of "BRYANT-HADLEY ADDITION" has been submitted to and approved by the Wichita-Sedgwick County Metropolitan Area Planning Commission.

Dated this 19th day of August, 1976.

WICHITA - SEDGWICK COUNTY METROPOLITAN AREA PLANNING COMMISSION
David Bayouth, Chairman
Robert A. Lakin, Secretary

This plat has been approved and all dedications shown, hereon, if any, accepted by the City Commission of the City of Wichita, Kansas, this 14th day of February, 1978.

Tony Cosado, Mayor
Donald C. Gisick, City Clerk

This plat has been approved and all dedications shown hereon, if any, accepted by the Board of County Commissioners of Sedgwick County, Kansas, this 8th day of March, 1978.

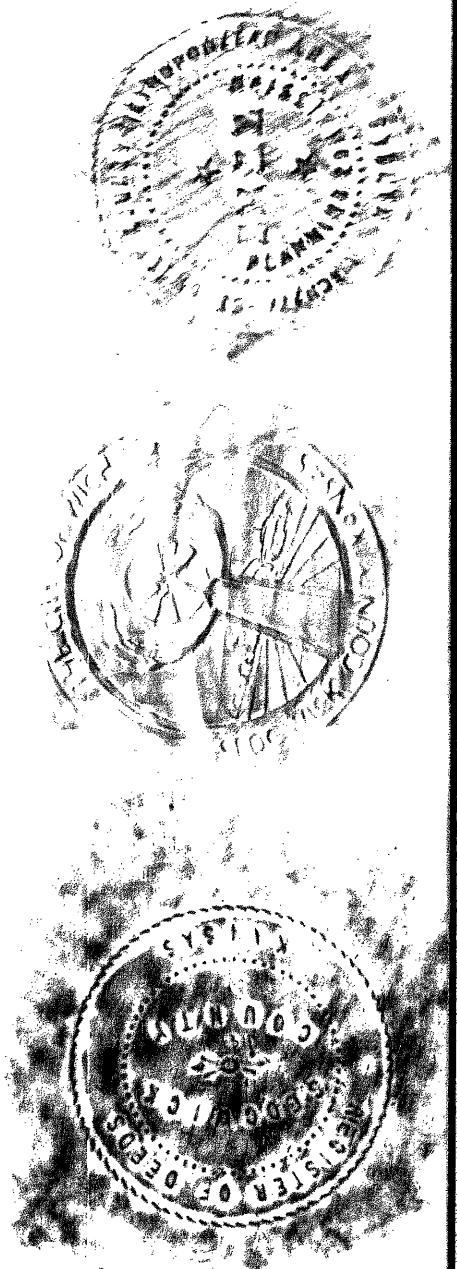
Everett Patrick, Chairman
Tom Scott, Commissioner
John Held, Commissioner

Attest: Dorothy K. White, County Clerk

STATE OF KANSAS, COUNTY OF SEDGWICK, SS:

This is to certify that this instrument was filed for record in the Register of Deeds Office at 2:30 PM on the 9th day of MARCH, 1978.

Bette F. McGar, Register of Deeds
Pat Kettler, Deputy



BAUGHMAN COMPANY
315 Ellis St.
Wichita, KS 67211
316-262-7271
BaughmanCo.com

BRYANT OPPORTUNITY ACADEMY

COPY OF PLAT

WATER DISTRIBUTION SYSTEM

PROJECT NUMBER: 22-01-E106

DESIGN: DRAWN:
DATE: August 25, 2022

SHEET 11 OF 11