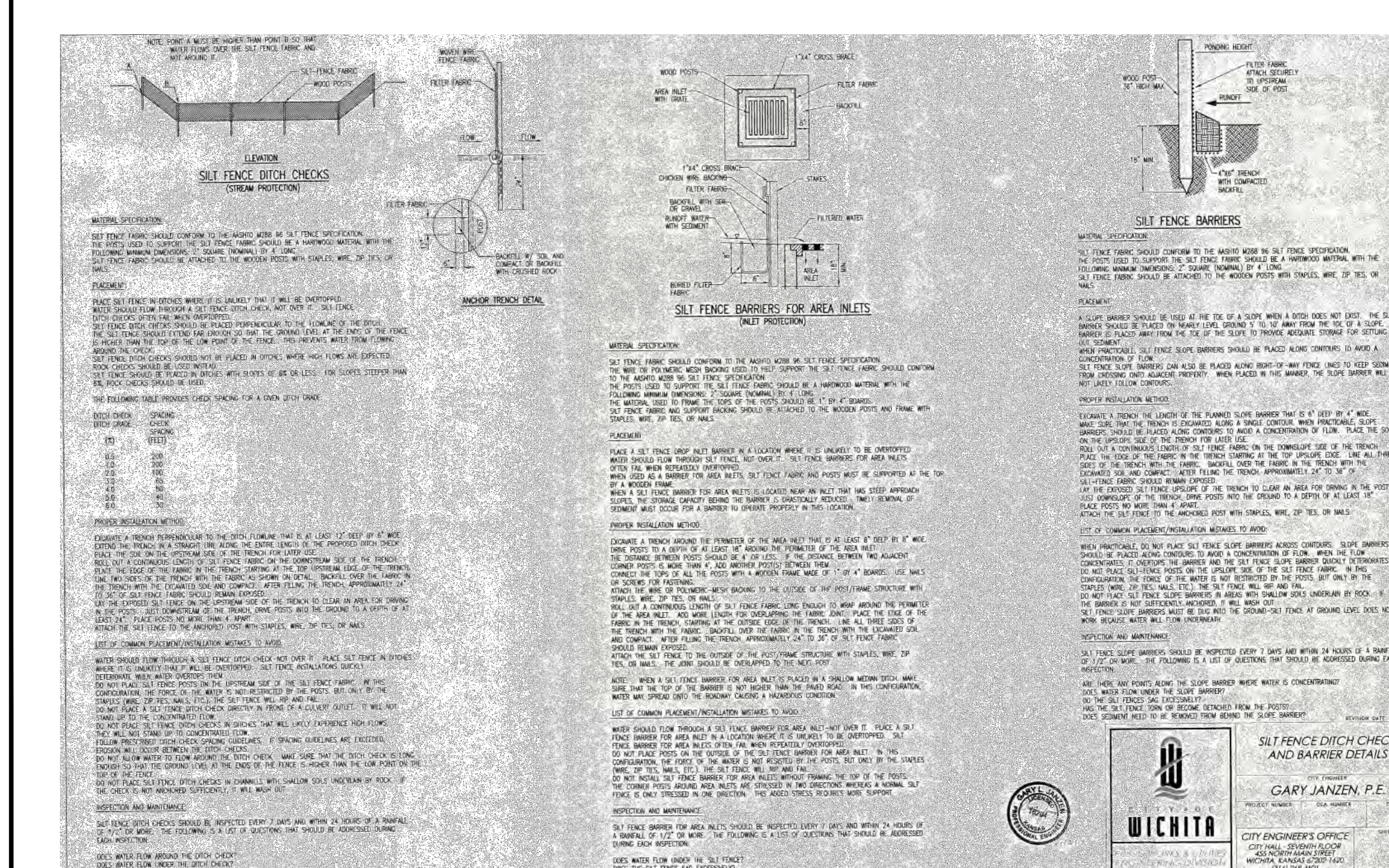
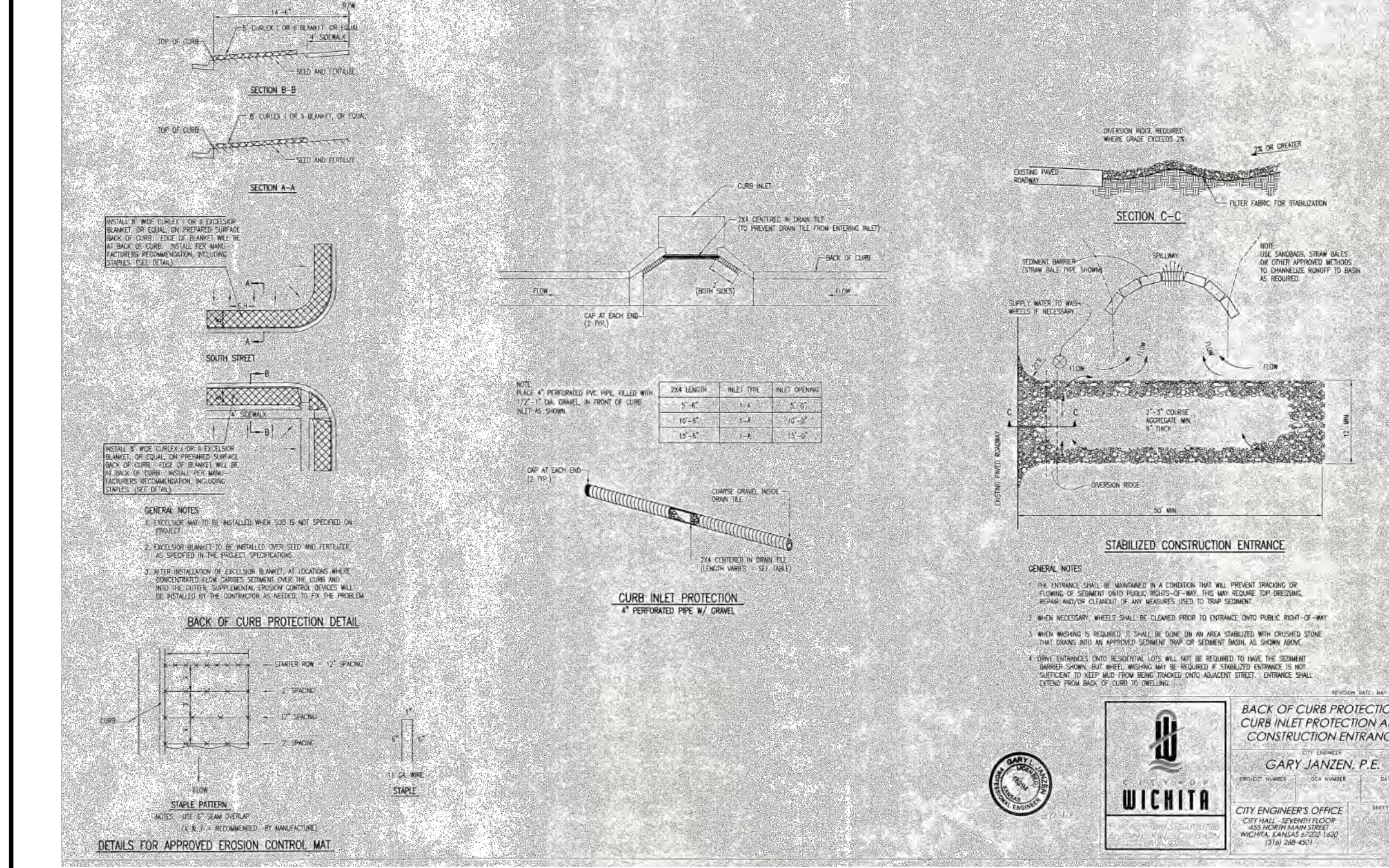
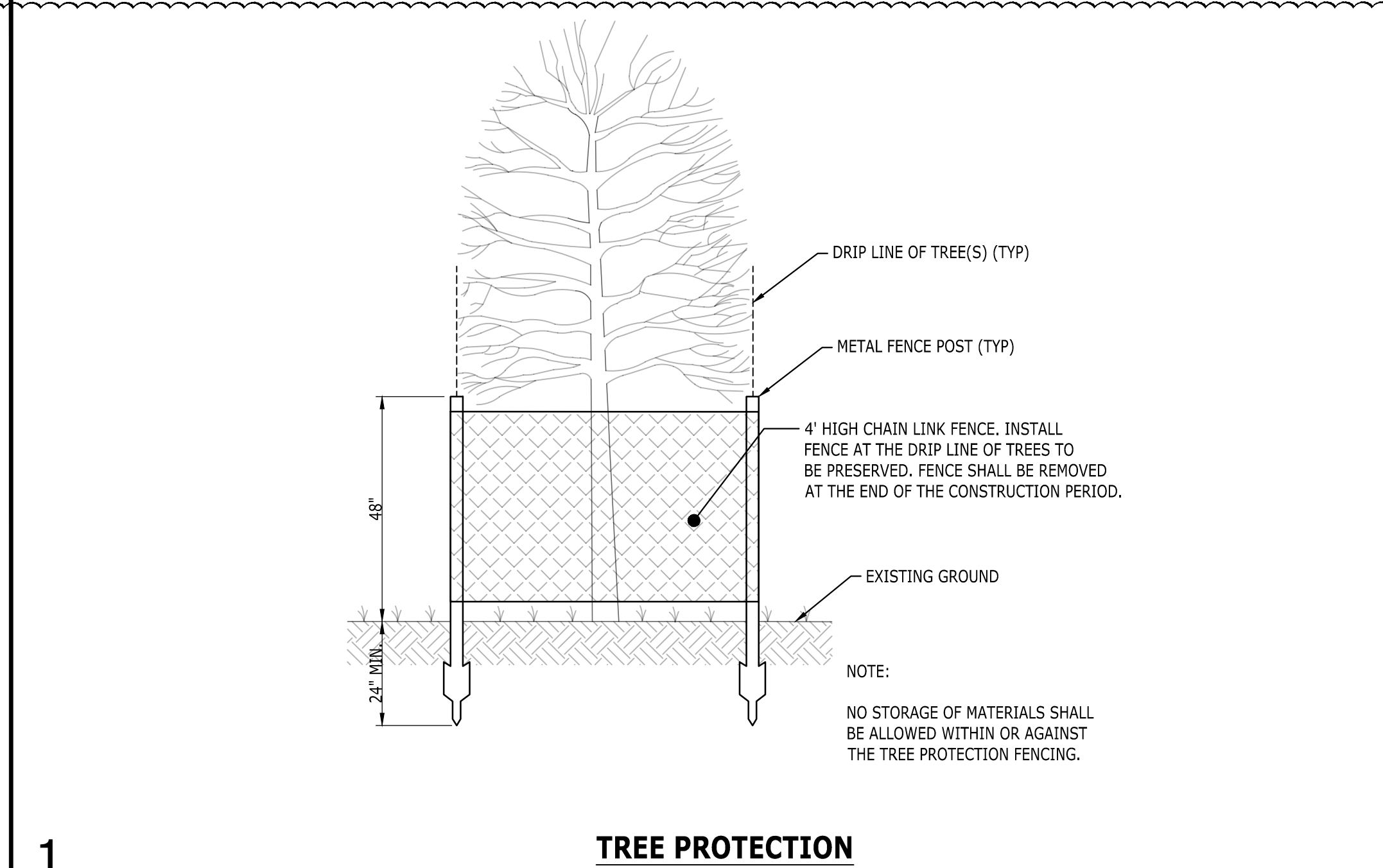
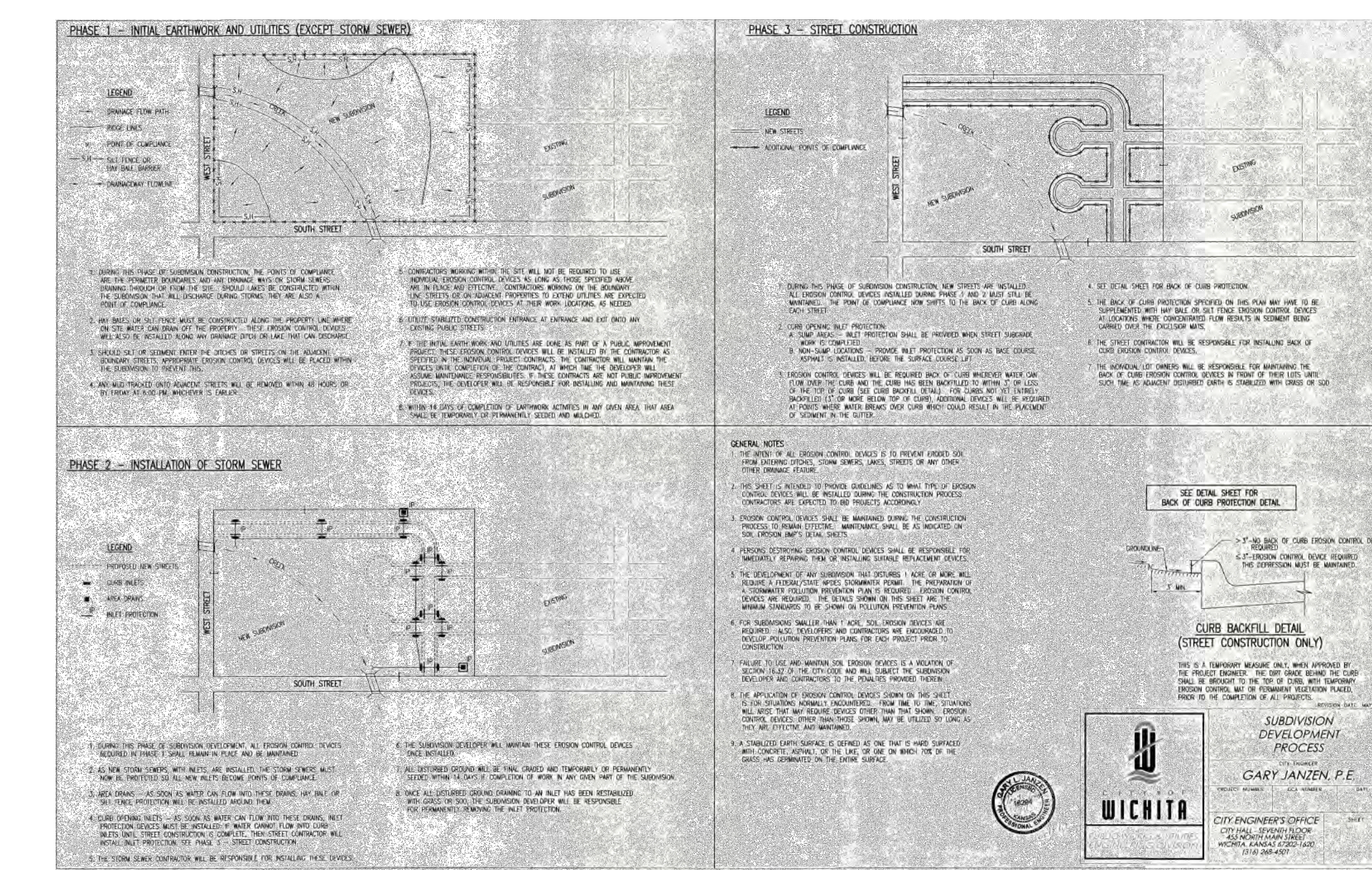
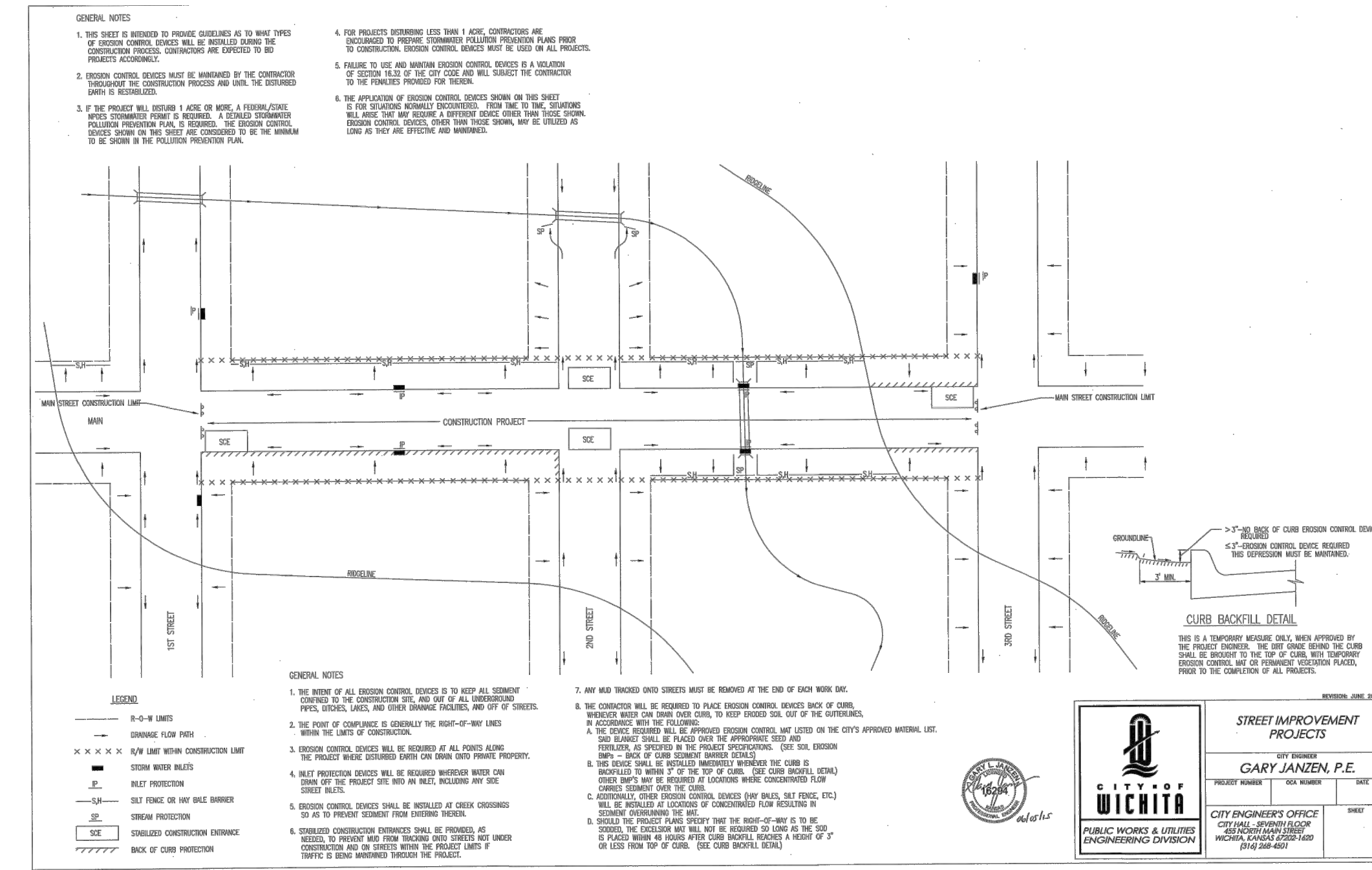
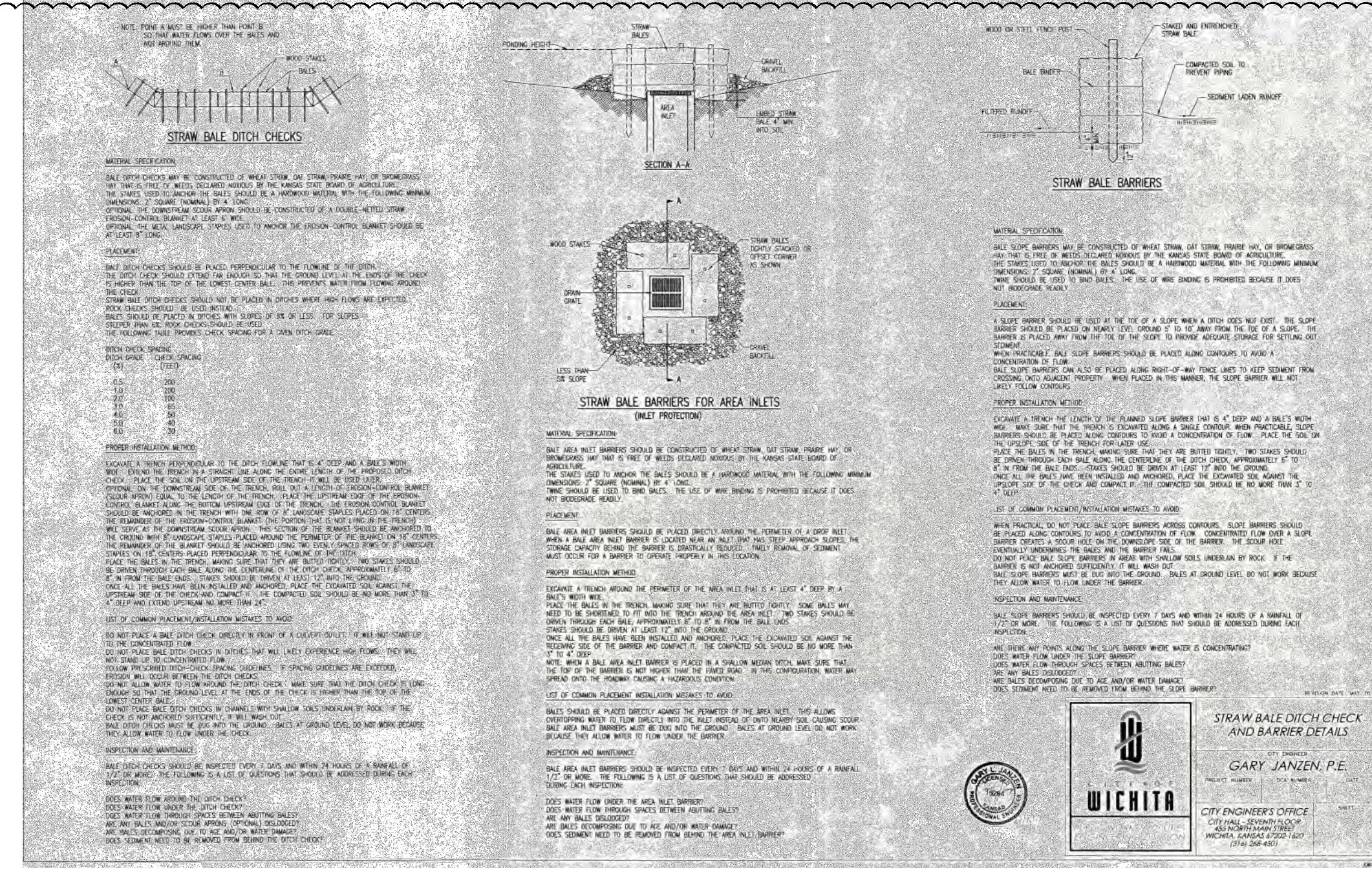


P:\2022\20220138_Wesley Rehab Hospital\Construction\20220138_C3.1_ERO-C3.1 Erosion Control Details.dwg Apr 27, 2022 czsazman

EROSION CONTROL NOTES:

1. THE STORMWATER POLLUTION PREVENTION PLAN IS COMPRISED OF THE EROSION CONTROL PLAN, STANDARD DETAILS, SWPPP, PERMIT AND ALL SUBSEQUENT REPORTS AND RELATED DOCUMENTS.
2. ALL CONTRACTORS AND SUBCONTRACTORS INVOLVED WITH STORM WATER POLLUTION PREVENTION SHALL OBTAIN A COPY OF THE STORMWATER PREVENTION PLAN AND THE STATE OF KANSAS NATIONAL POLLUTANT DISCHARGE ELIMINATION SYSTEM (NPDES PERMIT) AND BECOME FAMILIAR WITH THEIR CONTENTS.
3. CONTRACTOR SHALL IMPLEMENT BEST MANAGEMENT PRACTICES AS REQUIRED BY THE SWPPP. ADDITIONAL BEST MANAGEMENT PRACTICES SHALL BE IMPLEMENTED AS DICTATED BY CONDITIONS AT ADDITIONAL COST OF THE OWNER THROUGH ALL PHASES OF CONSTRUCTION.
4. BEST MANAGEMENT PRACTICES (BMP'S) AND CONTROLS SHALL CONFORM TO FEDERAL, STATE, OR LOCAL REQUIREMENTS OR MANUAL OF PRACTICE. AS APPLICABLE, CONTRACTOR SHALL IMPLEMENT ADDITIONAL CONTROLS AS DIRECTED BY PERMITTING AGENCY OR OWNER.
5. SITE MAP MUST CLEARLY DELINEATE ALL STATE WATERS. PERMITS FOR ANY CONSTRUCTION ACTIVITY IMPACTING STATE WATERS OR REGULATED WETLANDS MUST BE MAINTAINED ON SITE AT ALL TIMES.
6. CONTRACTOR SHALL MINIMIZE CLEARING TO THE MAXIMUM EXTENT PRACTICAL OR AS REQUIRED BY THE GENERAL PERMIT.
7. GENERAL CONTRACTOR SHALL DENOTE ON PLAN THE TEMPORARY PARKING AND STORAGE AREA WHICH SHALL ALSO BE USED AS THE EQUIPMENT MAINTENANCE AND CLEANING AREA, EMPLOYEE PARKING AREA, AND AREA FOR LOCATING PORTABLE FACILITIES, OFFICE TRAILERS, AND TOILET FACILITIES.
8. ALL WASH WATER (CONCRETE TRUCKS, VEHICLE CLEANING, EQUIPMENT CLEANING, ETC.) MUST BE FREE OF DETERGENTS SOAPS OR SOLVENTS AND TREATED IN A SEDIMENT BASIN OR ALTERNATIVE CONTROL PRIOR TO DISCHARGE.
9. SUFFICIENT OIL AND GREASE ABSORBING MATERIALS AND FLOTATION BOOMS SHALL BE MAINTAINED ON SITE OR READILY AVAILABLE TO CONTAIN AND CLEAN-UP FUEL OR CHEMICAL SPILLS AND LEAKS.
10. DUST ON THE SITE SHALL BE CONTROLLED. THE USE OF MOTOR OILS AND OTHER PETROLEUM BASED OR TOXIC LIQUIDS FOR DUST SUPPRESSION OPERATIONS IS PROHIBITED.
11. RUBBISH, TRASH, GARBAGE, LITTER, OR OTHER SUCH MATERIALS SHALL BE DEPOSITED INTO SEALED CONTAINERS. MATERIALS SHALL BE PREVENTED FROM LEAVING THE PREMISES THROUGH THE ACTION OF WIND OR STORMWATER DISCHARGE INTO DRAINAGE DITCHES OR WATERS OF THE STATE.
12. ALL STORMWATER POLLUTION PREVENTION MEASURES PRESENTED ON THE EROSION CONTROL PLAN AND IN THE SWPPP SHALL BE INITIATED AS SOON AS PRACTICABLE.
13. STABILIZATION MUST BE INITIATED IMMEDIATELY WHEN SOIL DISTURBING ACTIVITIES CEASE AND WILL NOT RESUME FOR A PERIOD EXCEEDING 14 DAYS. STABILIZE DISTURBED AREAS WITH MULCH OR OTHER SIMILARLY EFFECTIVE SOIL STABILIZING BMP'S. INITIAL STABILIZATION ACTIVITIES MUST BE COMPLETED WITHIN 14 DAYS AFTER SOIL DISTURBING ACTIVITIES CEASE.
14. DISTURBED PORTIONS OF THE SITE WHERE CONSTRUCTION ACTIVITY HAS PERMANENTLY STOPPED SHALL BE MULCHED OR OTHER SIMILARLY EFFECTIVE SOIL STABILIZING MEASURES PER PART 7.2.5 OF THE GENERAL PERMIT. IN ADDITION TO PERMANENT SEEDING, THESE AREAS SHALL BE SEEDDED NO LATER THAN 14 DAYS AFTER THE LAST CONSTRUCTION ACTIVITY OCCURRING IN THESE AREAS. REFER TO THE GRADING PLAN AND/OR LANDSCAPE PLAN.
15. IF THE ACTION OF VEHICLES TRAVELING OVER THE GRAVEL CONSTRUCTION ENTRANCES IS NOT SUFFICIENT TO REMOVE THE MAJORITY OF DIRT OR MUD, THEN THE TIRES MUST BE WASHED BEFORE THE VEHICLES ENTER A PUBLIC ROAD. IF WASH WATER AND TRAP THE SEDIMENT BEFORE IT IS CARRIED OFF THE SITE.
16. ALL MATERIALS SPILLED, DROPPED, WASHED, OR TRACKED FROM VEHICLES ONTO ROADWAYS OR INTO STORM DRAINS MUST BE REMOVED IMMEDIATELY.
17. CONTRACTORS OR SUBCONTRACTORS WILL BE RESPONSIVE FOR REMOVING SEDIMENT IN THE DETENTION POND AND ANY SEDIMENT THAT MAY HAVE COLLECTED IN THE STORM SEWER DRAINAGE SYSTEMS IN CONJUNCTION WITH THE STABILIZATION OF THE SITE.
18. ON-SITE & OFFSITE SOIL STOCKPILES AND BORROW AREAS SHALL BE PROTECTED FROM EROSION AND SEDIMENTATION THROUGH IMPLEMENTATION OF BEST MANAGEMENT PRACTICES. STOCKPILE AND BORROW AREA LOCATIONS SHALL BE NOTED ON THE SITE MAP AND PERMITTED IN ACCORDANCE WITH GENERAL PERMIT REQUIREMENTS.
19. SLOPES SHALL BE LEFT IN A ROUGHENED CONDITION DURING THE GRADING PHASE TO REDUCE RUNOFF VELOCITIES AND EROSION.
20. DUE TO THE GRADE CHANGES DURING THE DEVELOPMENT OF THE PROJECT, THE CONTRACTOR IS RESPONSIBLE FOR ADJUSTING THE EROSION CONTROL MEASURES (SILT FENCES, STRAW BALES, ETC.) TO PREVENT EROSION.
21. ALL CONSTRUCTION SHALL BE STABILIZED AT THE END OF EACH WORKING DAY. THIS INCLUDES BACKFILLING OF TRENCHES FOR UTILITY CONSTRUCTION AND PLACEMENT OF GRAVEL OR BITUMINOUS PAVING FOR ROAD CONSTRUCTION.
22. BETWEEN THE TIME THIS SWPPP IS IMPLEMENTED AND FINAL NOTICE OF TERMINATION HAS BEEN SUBMITTED, ALL DISTURBED AREAS AND POLLUTANT CONTROLS MUST BE INSPECTED WEEKLY AND WITHIN 24 HOURS OF A HALF OF AN INCH OF RAINFALL.



Catalyst DESIGN GROUP

941 N. WINDSIDE BLVD., SUITE 100, WICHITA, KANSAS, 67218
(620) 842-1100
WWW.CATALYSTDESIGNGROUP.COM

WESLEY MEDICAL CENTER, INC.

550 N. HILLSIDE ST.
WICHITA, KS 67214

WESLEY MEDICAL CENTER REHABILITATION HOSPITAL

WICHITA, KANSAS

NO.	DATE	CONSTRUCTION DOCUMENTS DESCRIPTION
1	11/18/2022	CONSTRUCTION DOCUMENTS

EROSION CONTROL DETAILS

PROJECT NUMBER: 20220138
DRAWING NUMBER: C3.1

HCA Healthcare

5100 TENNESSEE AVENUE
NASHVILLE, TENNESSEE 37207
MANAGER: AN ANDERSON

CIVIL & LANDSCAPE CONSULTANT

STANLEY D. LINDSEY & ASSOC.
2850 KRAFT DRIVE
NASHVILLE, TENNESSEE 37204
MANAGER: MARK HILNER

M.P.E. & T. CONSULTANT

I.C. THOMASSON ASSOC., INC.
2850 KRAFT DRIVE
NASHVILLE, TENNESSEE 37204
MANAGER: PUL BARBERE

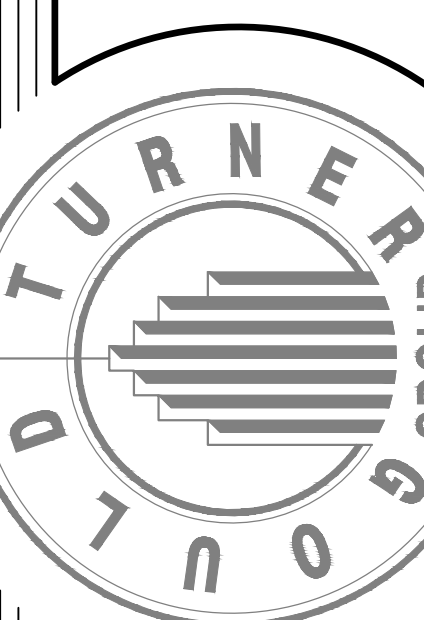
Wesley Medical Center Rehabilitation Hospital

833 N. VASSAR AVE., WICHITA, KANSAS 67214
HCA# 316800002
CT# 3706909

GOULD TURNER GROUP, P.C.

ARCHITECTURE
615 3RD AVE SOUTH, SUITE 700
NASHVILLE, TENNESSEE 37210

© Copyright by Gould Turner Group - 2022

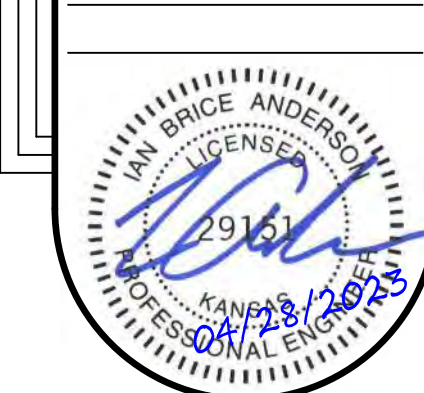


Wesley Medical Center Rehabilitation Hospital

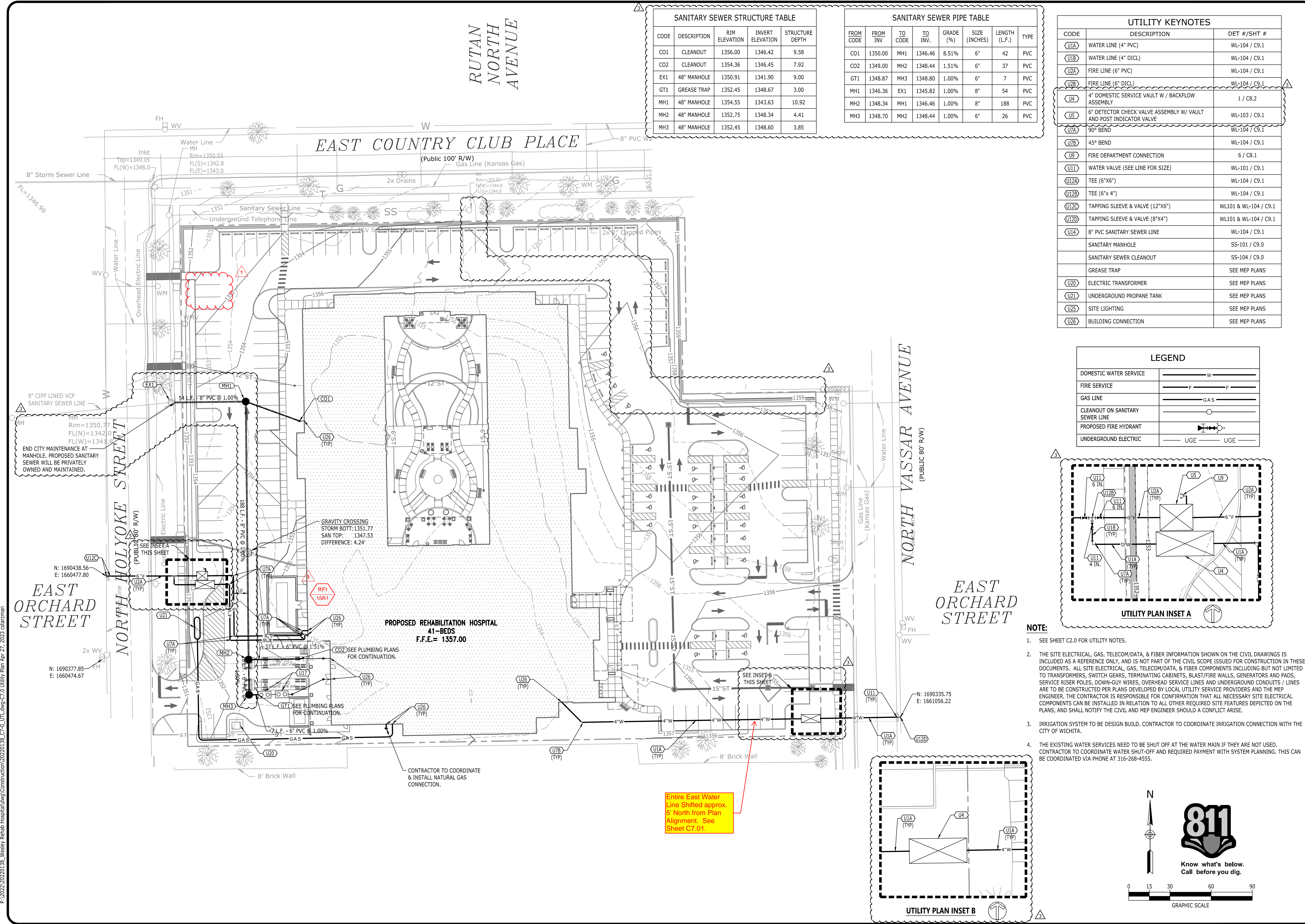
833 N. VASSAR AVE., WICHITA, KANSAS 67214
HCA# 316800002
CT# 3706909

VENDOR INFORMATION

ARCHITECT: GOULD TURNER GROUP, P.C.
ENGINEER: STANLEY D. LINDSEY & ASSOCIATES, INC.
LANDSCAPE ARCHITECT: I.C. THOMASSON ASSOCIATES, INC.
CONSTRUCTION MANAGER: MARK HILNER
GENERAL CONTRACTOR: WESLEY MEDICAL CENTER
MECHANICAL CONTRACTOR: WESLEY MEDICAL CENTER
ELECTRICAL CONTRACTOR: WESLEY MEDICAL CENTER
PLUMBING CONTRACTOR: WESLEY MEDICAL CENTER
ROOFING CONTRACTOR: WESLEY MEDICAL CENTER
PAINT CONTRACTOR: WESLEY MEDICAL CENTER
GLAZING CONTRACTOR: WESLEY MEDICAL CENTER
FLOORING CONTRACTOR: WESLEY MEDICAL CENTER
MASONRY CONTRACTOR: WESLEY MEDICAL CENTER
CONCRETE CONTRACTOR: WESLEY MEDICAL CENTER
METAL FABRICATOR: WESLEY MEDICAL CENTER
IRON WORK CONTRACTOR: WESLEY MEDICAL CENTER
STEEL ERECTOR: WESLEY MEDICAL CENTER
TRUCK INSTALLER: WESLEY MEDICAL CENTER



- RFI 013 Undisclosed Fire Line Vault
- RFI 015 Generator Triple Switch Relocation
- RFI 15R1 Generator Triple Switch Relocation

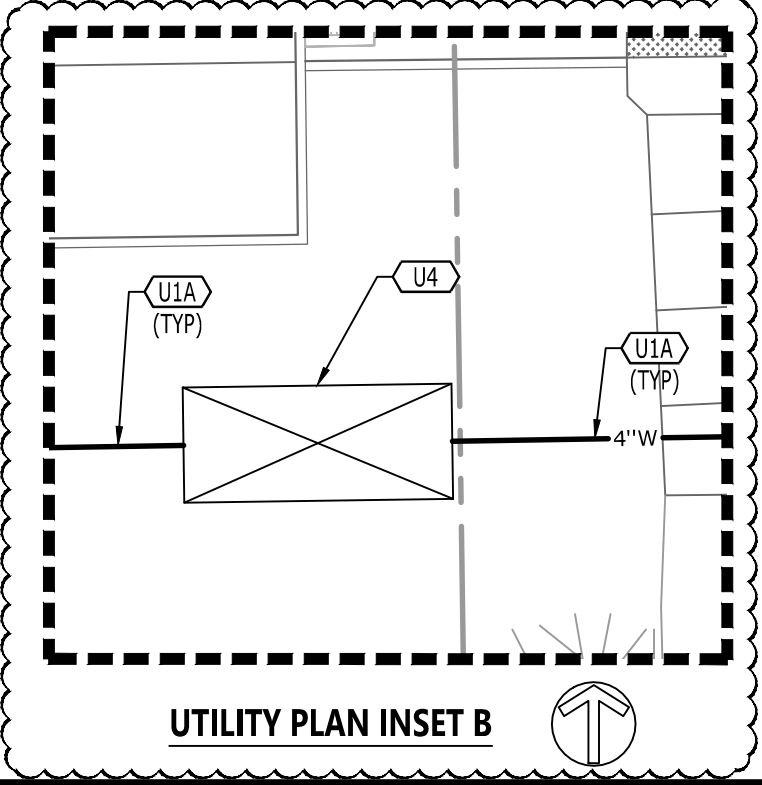
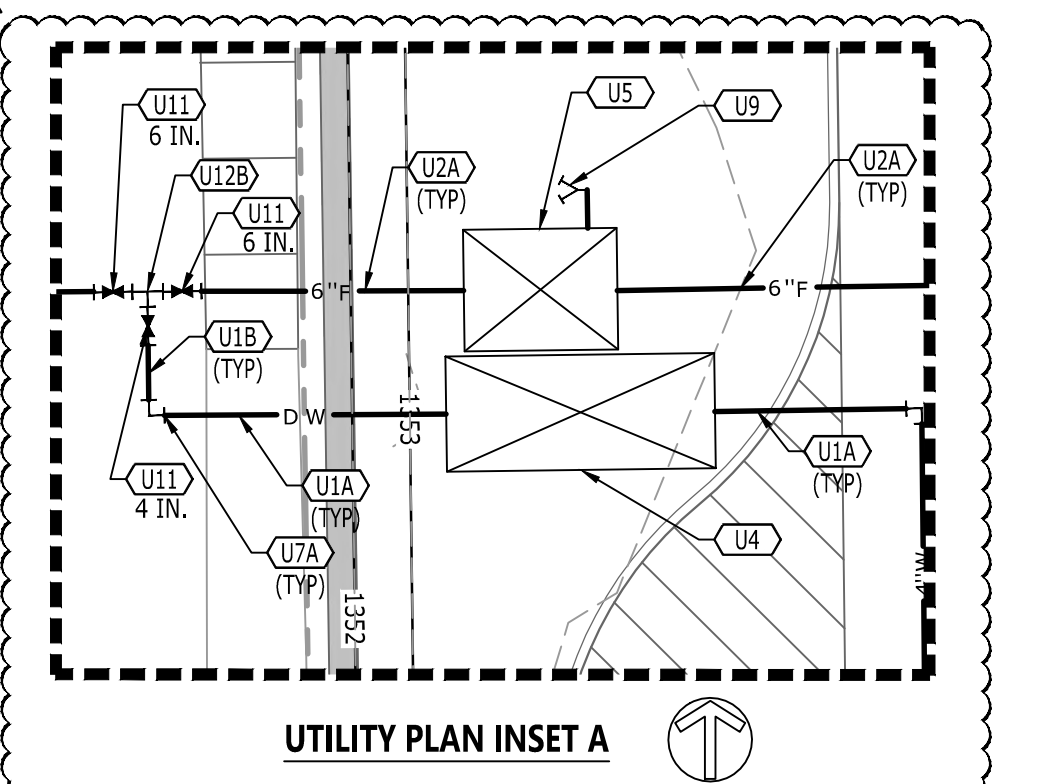


SANITARY SEWER STRUCTURE TABLE				
CODE	DESCRIPTION	RIM ELEVATION	INVERT ELEVATION	STRUCTURE DEPTH
CD1	CLEANOUT	1356.00	1346.42	9.58
CD2	CLEANOUT	1354.36	1346.45	7.92
EX1	48" MANHOLE	1350.91	1341.90	9.00
GT1	GREASE TRAP	1352.45	1348.67	3.00
MH1	48" MANHOLE	1354.55	1343.63	10.92
MH2	48" MANHOLE	1352.75	1348.34	4.41
MH3	48" MANHOLE	1352.45	1348.60	3.85

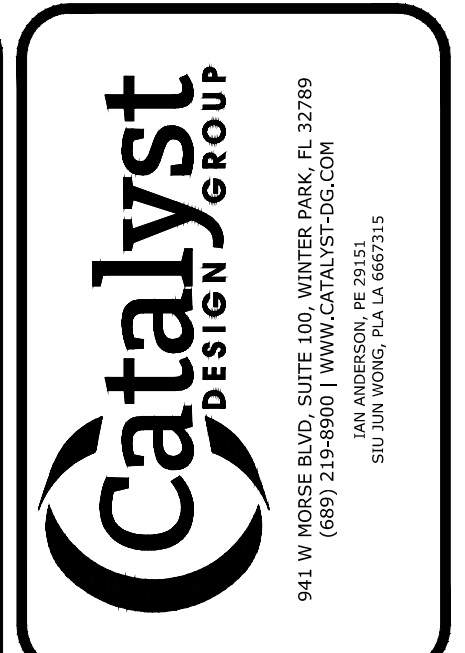
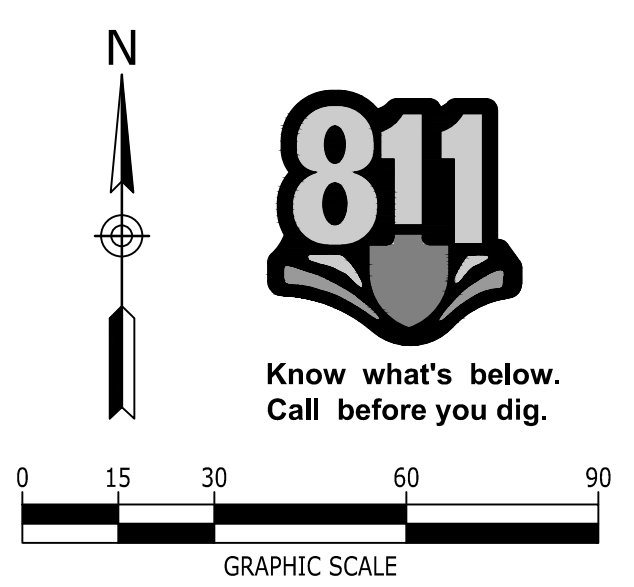
SANITARY SEWER PIPE TABLE							
FROM CODE	FROM INV.	TO CODE	TO INV.	GRADE (%)	SIZE (INCHES)	LENGTH (L.F.)	TYPE
CO1	1350.00	MH1	1346.46	8.51%	6"	42	PVC
CO2	1349.00	MH2	1348.44	1.51%	6"	37	PVC
GT1	1348.87	MH3	1348.80	1.00%	6"	7	PVC
MH1	1346.36	EX1	1345.82	1.00%	8"	54	PVC
MH2	1348.34	MH1	1346.46	1.00%	8"	188	PVC
MH3	1348.70	MH2	1348.44	1.00%	6"	26	PVC

UTILITY KEYNOTES		
CODE	DESCRIPTION	DET #/SHT #
U1A	WATER LINE (4" PVC)	WL-104 / C9.1
U1B	WATER LINE (4" D/C/L)	WL-104 / C9.1
U1C	FIRE LINE (6" PVC)	WL-104 / C9.1
U1D	FIRE LINE (6" D/C/L)	WL-104 / C9.1
U4	4" DOMESTIC SERVICE VAULT W / BACKFLOW ASSEMBLY	1 / C8.2
U5	6" DETECTOR CHECK VALVE ASSEMBLY W/ VAULT AND POST INDICATOR VALVE	WL-103 / C9.1
U7A	90° BEND	WL-104 / C9.1
U7B	45° BEND	WL-104 / C9.1
U9	FIRE DEPARTMENT CONNECTION	6 / C8.1
U11	WATER VALVE (SEE LINE FOR SIZE)	WL-101 / C9.1
U12A	TEE (6"x6")	WL-104 / C9.1
U12B	TEE (6"x4")	WL-104 / C9.1
U12C	TAPPING SLEEVE & VALVE (12"x6")	WL101 & WL-104 / C9.1
U12D	TAPPING SLEEVE & VALVE (8"x4")	WL101 & WL-104 / C9.1
U14	8" PVC SANITARY SEWER LINE	WL-104 / C9.1
U15	SANITARY MANHOLE	SS-101 / C9.0
U16	SANITARY SEWER CLEANOUT	SS-104 / C9.0
U17	GREASE TRAP	SEE MEP PLANS
U18	ELECTRIC TRANSFORMER	SEE MEP PLANS
U19	UNDERGROUND PROPANE TANK	SEE MEP PLANS
U20	SITE LIGHTING	SEE MEP PLANS
U21	BUILDING CONNECTION	SEE MEP PLANS

LEGEND	
DOMESTIC WATER SERVICE	— W —
FIRE SERVICE	— F —
GAS LINE	— GAS —
CLEANOUT ON SANITARY SEWER LINE	— C —
PROPOSED FIRE HYDRANT	— FH —
UNDERGROUND ELECTRIC	— UGE —



- NOTE:**
- SEE SHEET C2.0 FOR UTILITY NOTES.
 - THE SITE ELECTRICAL, GAS, TELECOM/DATA, & FIBER INFORMATION SHOWN ON THE CIVIL DRAWINGS IS INCLUDED AS A REFERENCE ONLY, AND IS NOT PART OF THE CIVIL SCOPE ISSUED FOR CONSTRUCTION IN THESE DOCUMENTS. ALL SITE ELECTRICAL, GAS, TELECOM/DATA, & FIBER COMPONENTS INCLUDING BUT NOT LIMITED TO TRANSFORMERS, SWITCH GEARS, TERMINATING CABINETS, BLAST/FIRE WALLS, GENERATORS AND PADS, SERVICE RISER POLES, DOWN-GUY WIRES, OVERHEAD SERVICE LINES AND UNDERGROUND CONDUITS / LINES ARE TO BE CONSTRUCTED PER PLANS DEVELOPED BY LOCAL UTILITY SERVICE PROVIDERS AND THE MEP ENGINEER. THE CONTRACTOR IS RESPONSIBLE FOR CONFIRMATION THAT ALL NECESSARY SITE ELECTRICAL COMPONENTS CAN BE INSTALLED IN RELATION TO ALL OTHER REQUIRED SITE FEATURES DEPICTED ON THE PLANS, AND SHALL NOTIFY THE CIVIL AND MEP ENGINEER SHOULD A CONFLICT ARISE.
 - IRRIGATION SYSTEM TO BE DESIGN BUILD. CONTRACTOR TO COORDINATE IRRIGATION CONNECTION WITH THE CITY OF WICHITA.
 - THE EXISTING WATER SERVICES NEED TO BE SHUT OFF AT THE WATER MAIN IF THEY ARE NOT USED. CONTRACTOR TO COORDINATE WATER SHUT-OFF AND REQUIRED PAYMENT WITH SYSTEM PLANNING. THIS CAN BE COORDINATED VIA PHONE AT 316-268-4555.



WESLEY MEDICAL CENTER, INC.
550 N. HILLSIDE ST.
WICHITA, KS 67214

WESLEY MEDICAL CENTER REHABILITATION HOSPITAL
WICHITA, KANSAS

NO.	DATE	CONSTRUCTION DOCUMENTS DESCRIPTION
1	11/18/2022	CONSTRUCTION DOCUMENTS

UTILITY PLAN
PROJECT NUMBER: 20220138
DRAWING NUMBER: **C7.0**

CIVIL & LANDSCAPE CONSULTANT:
CATALYST DESIGN GROUP
5100 TENNESSEE AVENUE
NASHVILLE, TN 37209
MANAGER: JAY PATTERSON

STRUCTURAL CONSULTANT:
I.C. THOMASSON ASSOC., INC.
2950 KRAFT DRIVE
NASHVILLE, TENNESSEE 37204
MANAGER: PAUL DABBE

M.P.E. & T. CONSULTANT:
MARC BRIBERIDIS



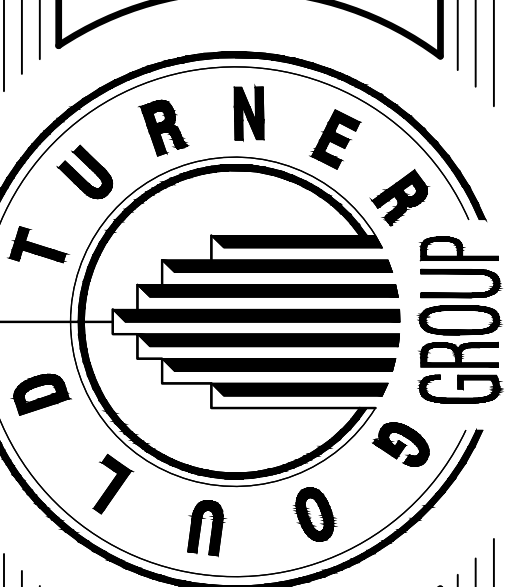
REVISIONS:

- 1. 1/12/2023
- 2. 2/17/2023
- 3. 3/31/2023
- 4. 4/28/2023

DATE: 11/18/2022

CONSTRUCTION DOCUMENTS

GOULD TURNER GROUP, P.C.
ARCHITECTURE
615 3RD AVE SOUTH, SUITE 700
NASHVILLE, TENNESSEE 37210
© Copyright by Gould Turner Group, 2022



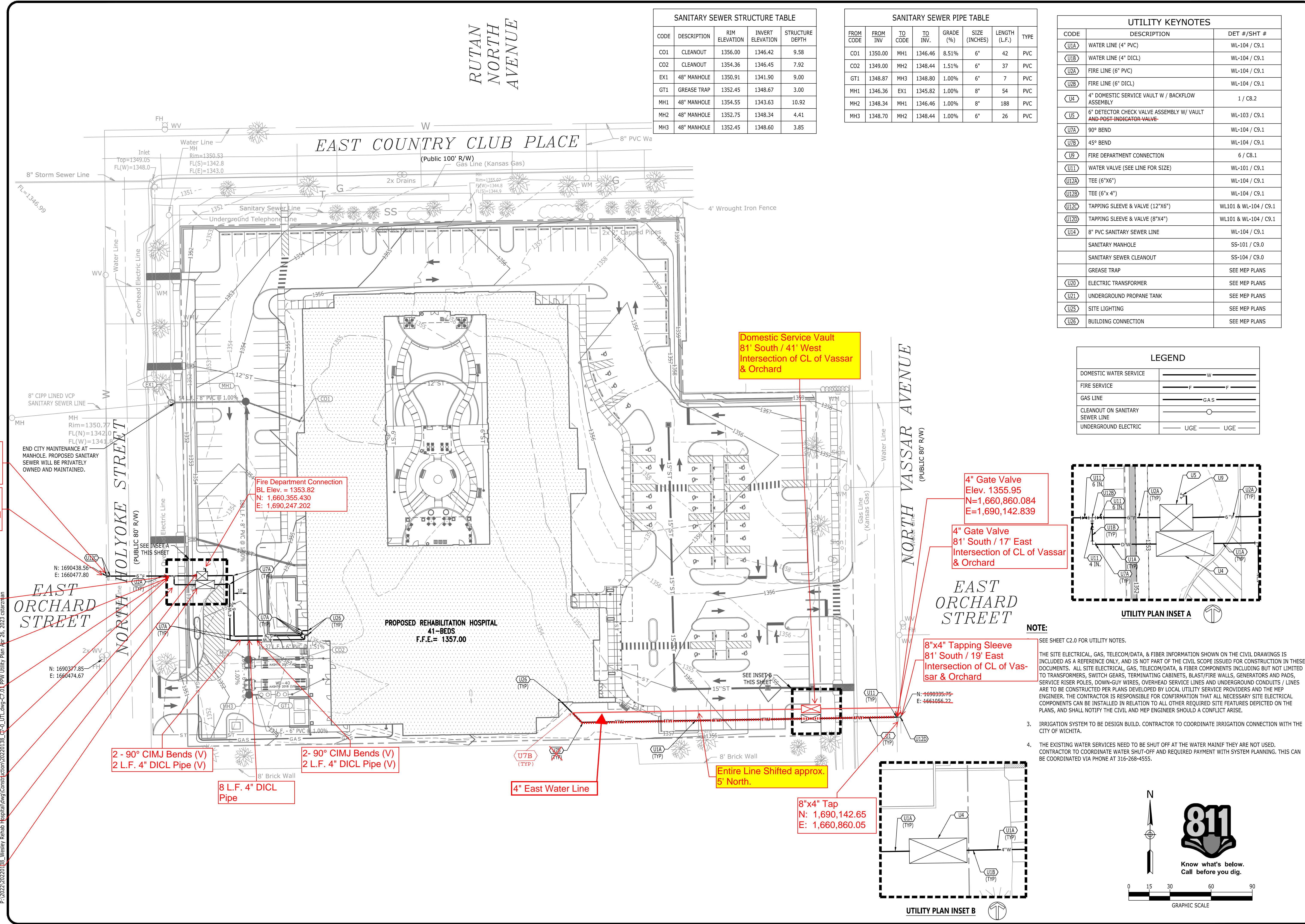
WESLEY MEDICAL CENTER REHABILITATION HOSPITAL
833 N. VASSAR AVE., WICHITA, KANSAS 67214
HCA# 316900002
GT# 3796309

VENDOR INFORMATION

HCA# 316900002
HCA CONSTRUCTION MANAGER: MARC BRIBERIDIS



UTILITY PLAN
C7.0

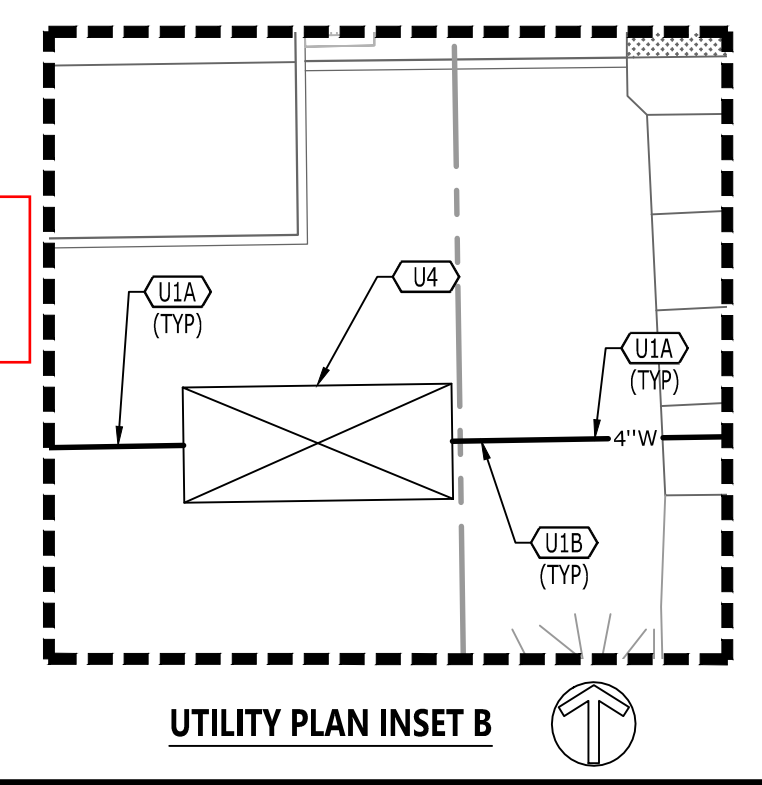
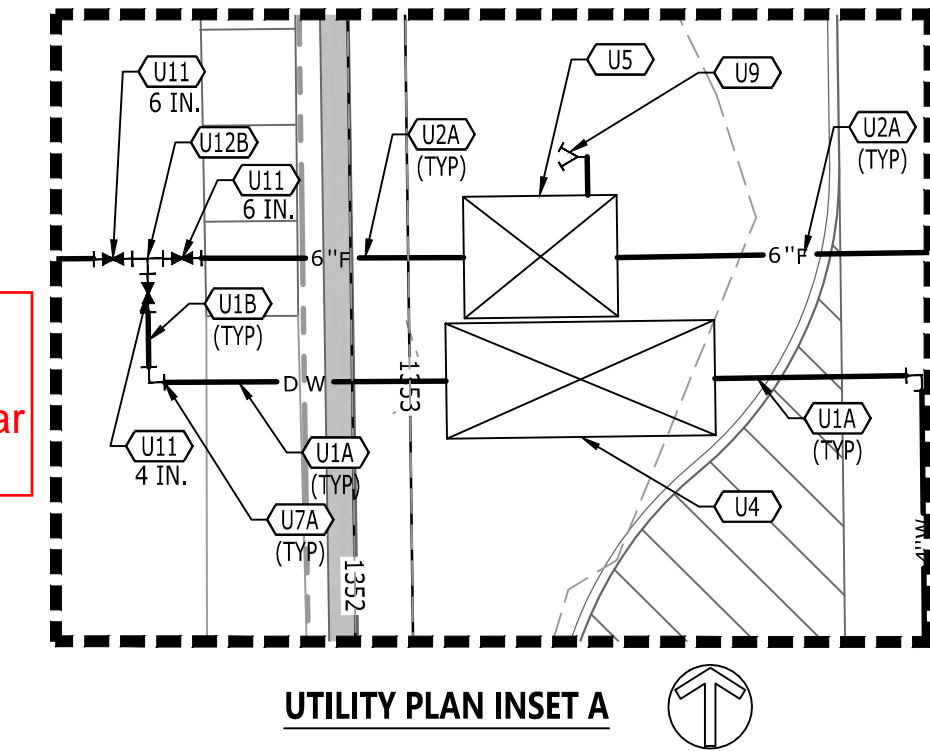


SANITARY SEWER STRUCTURE TABLE				
CODE	DESCRIPTION	RIM ELEVATION	INVERT ELEVATION	STRUCTURE DEPTH
CO1	CLEANOUT	1356.00	1346.42	9.58
CO2	CLEANOUT	1354.36	1346.45	7.92
EX1	48" MANHOLE	1350.91	1341.90	9.00
GT1	GREASE TRAP	1352.45	1348.67	3.00
MH1	48" MANHOLE	1354.55	1343.63	10.92
MH2	48" MANHOLE	1352.75	1348.34	4.41
MH3	48" MANHOLE	1352.45	1348.60	3.85

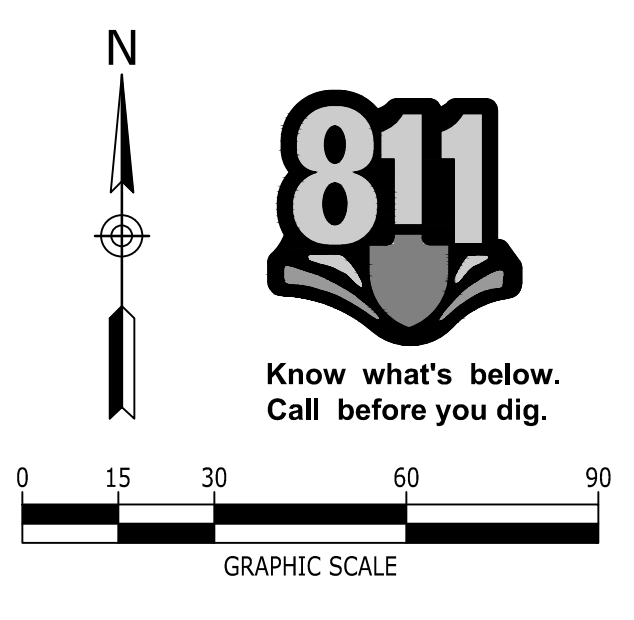
SANITARY SEWER PIPE TABLE							
FROM CODE	FROM INV.	TO CODE	TO INV.	GRADE (%)	SIZE (INCHES)	LENGTH (L.F.)	TYPE
CO1	1350.00	MH1	1346.46	8.51%	6"	42	PVC
CO2	1349.00	MH2	1348.44	1.51%	6"	37	PVC
GT1	1348.87	MH3	1348.80	1.00%	6"	7	PVC
MH1	1346.36	EX1	1345.82	1.00%	8"	54	PVC
MH2	1348.34	MH1	1346.46	1.00%	8"	188	PVC
MH3	1348.70	MH2	1348.44	1.00%	6"	26	PVC

UTILITY KEYNOTES		
CODE	DESCRIPTION	DET #/SHT #
U1A	WATER LINE (4" PVC)	WL-104 / C9.1
U1B	WATER LINE (4" DICL)	WL-104 / C9.1
U2A	FIRE LINE (6" PVC)	WL-104 / C9.1
U2B	FIRE LINE (6" DICL)	WL-104 / C9.1
U4	4" DOMESTIC SERVICE VAULT W / BACKFLOW ASSEMBLY	1 / C8.2
U5	6" DETECTOR CHECK VALVE ASSEMBLY W/ VAULT AND POST-INDICATOR VALVE	WL-103 / C9.1
U7A	90° BEND	WL-104 / C9.1
U7B	45° BEND	WL-104 / C9.1
U9	FIRE DEPARTMENT CONNECTION	6 / C8.1
U11	WATER VALVE (SEE LINE FOR SIZE)	WL-101 / C9.1
U12A	TEE (6"x6")	WL-104 / C9.1
U12B	TEE (6"x4")	WL-104 / C9.1
U12C	TAPPING SLEEVE & VALVE (12"x6")	WL101 & WL-104 / C9.1
U12D	TAPPING SLEEVE & VALVE (8"x4")	WL101 & WL-104 / C9.1
U14	8" PVC SANITARY SEWER LINE	WL-104 / C9.1
U15	SANITARY MANHOLE	SS-101 / C9.0
U16	SANITARY SEWER CLEANOUT	SS-104 / C9.0
U17	GREASE TRAP	SEE MEP PLANS
U18	ELECTRIC TRANSFORMER	SEE MEP PLANS
U19	UNDERGROUND PROPANE TANK	SEE MEP PLANS
U20	SITE LIGHTING	SEE MEP PLANS
U25	BUILDING CONNECTION	SEE MEP PLANS

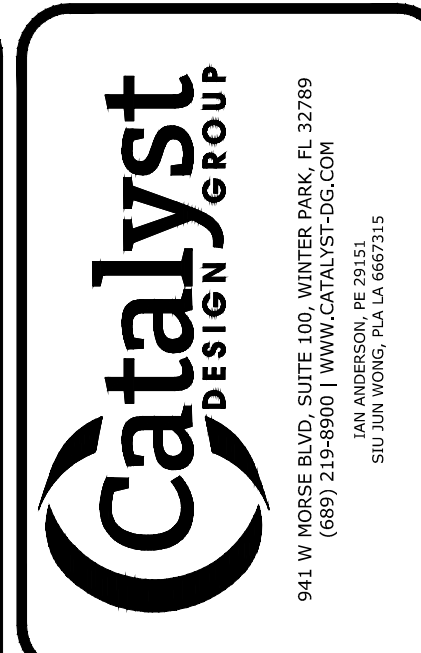
LEGEND	
DOMESTIC WATER SERVICE	— W —
FIRE SERVICE	— F —
GAS LINE	— GAS —
CLEANOUT ON SANITARY SEWER LINE	— C —
UNDERGROUND ELECTRIC	— UGE —



NOTE:
 SEE SHEET C2.0 FOR UTILITY NOTES.
 THE SITE ELECTRICAL, GAS, TELECOM/DATA, & FIBER INFORMATION SHOWN ON THE CIVIL DRAWINGS IS INCLUDED AS A REFERENCE ONLY, AND IS NOT PART OF THE CIVIL SCOPE ISSUED FOR CONSTRUCTION IN THESE DOCUMENTS. ALL SITE ELECTRICAL, GAS, TELECOM/DATA, & FIBER COMPONENTS INCLUDING BUT NOT LIMITED TO TRANSFORMERS, SWITCH GEARS, TERMINATING CABINETS, BLAST/FIRE WALLS, GENERATORS AND PADS, SERVICE RISER POLES, DOWN-GUY WIRES, OVERHEAD SERVICE LINES AND UNDERGROUND CONDUITS / LINES ARE TO BE CONSTRUCTED PER PLANS DEVELOPED BY LOCAL UTILITY SERVICE PROVIDERS AND THE MEP ENGINEER. THE CONTRACTOR IS RESPONSIBLE FOR CONFIRMATION THAT ALL NECESSARY SITE ELECTRICAL COMPONENTS CAN BE INSTALLED IN RELATION TO ALL OTHER REQUIRED SITE FEATURES DEPICTED ON THE PLANS, AND SHALL NOTIFY THE CIVIL AND MEP ENGINEER SHOULD A CONFLICT ARISE.
 3. IRRIGATION SYSTEM TO BE DESIGN BUILD. CONTRACTOR TO COORDINATE IRRIGATION CONNECTION WITH THE CITY OF WICHITA.
 4. THE EXISTING WATER SERVICES NEED TO BE SHUT OFF AT THE WATER MAIN IF THEY ARE NOT USED. CONTRACTOR TO COORDINATE WATER SHUT-OFF AND REQUIRED PAYMENT WITH SYSTEM PLANNING. THIS CAN BE COORDINATED VIA PHONE AT 316-268-4555.



- 8"x6" Tapping Sleeve
27' North / 15' West
Intersection of CL of Orchard and Holyoke
- 6" Gate Valve
27' North / 14' West
Intersection of CL of Orchard and Holyoke
- 6" Gate Valve
27' North / 33' East
Intersection of CL of Orchard and Holyoke
- 6"x4" Tee
27' North / 34' East
Intersection of CL of Orchard and Holyoke
- 6" Gate Valve
27' North / 35' East
Intersection of CL of Orchard and Holyoke
- 4" Gate Valve
26' North / 34' East
Intersection of CL of Orchard and Holyoke
- 90° CIMJ Bend
21' North / 34' East
Intersection of CL of Orchard and Holyoke
- Fire Service Vault
27' North / 56' East
Intersection of CL of Orchard and Holyoke
- Domestic Service Vault
21' North / 56' East
Intersection of CL of Orchard and Holyoke



WESLEY MEDICAL CENTER, INC.
 550 N. HILLSIDE ST.
 WICHITA, KS 67214

WESLEY MEDICAL CENTER REHABILITATION HOSPITAL
 WICHITA, KANSAS

NO.	DATE	CONSTRUCTION DOCUMENTS DESCRIPTION
1	11/18/2022	CONSTRUCTION DOCUMENTS

PPW UTILITY PLAN
 PROJECT NUMBER: 20220138
 DRAWING NUMBER: C7.01

CIVIL & LANDSCAPE CONSULTANT:
 CATALYST DESIGN GROUP
 5100 TENNESSEE AVENUE
 NASHVILLE, TN 37209
 MANAGER: TAYLOR PETERSON
 HCA CONSTRUCTION MANAGER: MARC BRIBERDIS

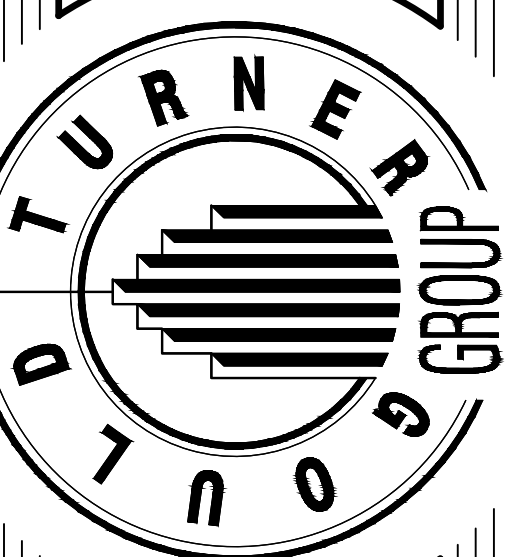
STRUCTURAL CONSULTANT:
 STANLEY D. LINSLEY & ASSOC.
 750 OLD HICKORY BLVD., BUILDING 1,
 NASHVILLE, TENNESSEE 37204
 MANAGER: PAUL DARGIE

M.P.E. & T. CONSULTANT:
 I.C. THOMASSON ASSOC., INC.
 2850 REARF DRIVE
 NASHVILLE, TENNESSEE 37204
 MANAGER: PAUL DARGIE

REVISIONS:
 AMENDMENT 2
 DATE: 11/18/2022

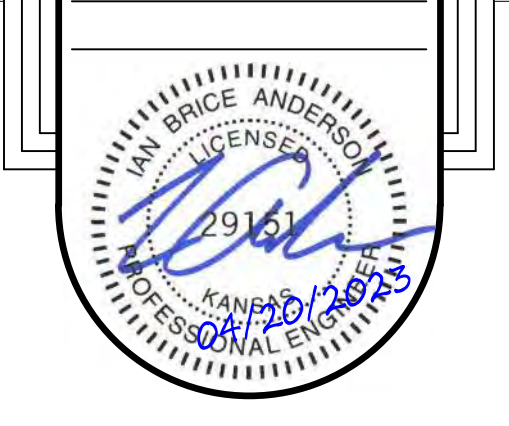
CONSTRUCTION DOCUMENTS

GOULD TURNER GROUP, P.C.
 ARCHITECTURE
 615 3RD AVE SOUTH, SUITE 700
 NASHVILLE, TENNESSEE 37210
 © Copyright by Gould Turner Group, 2022



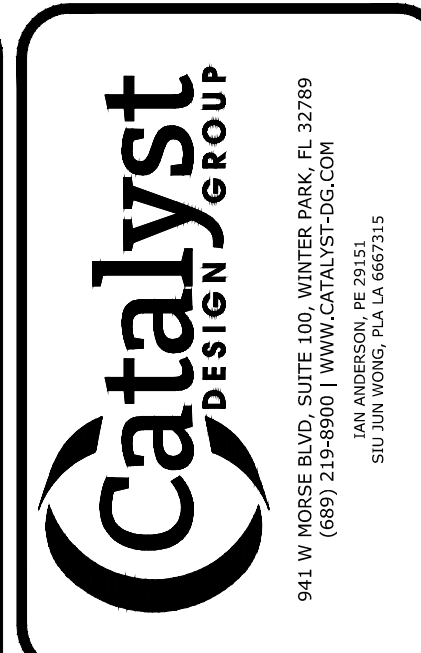
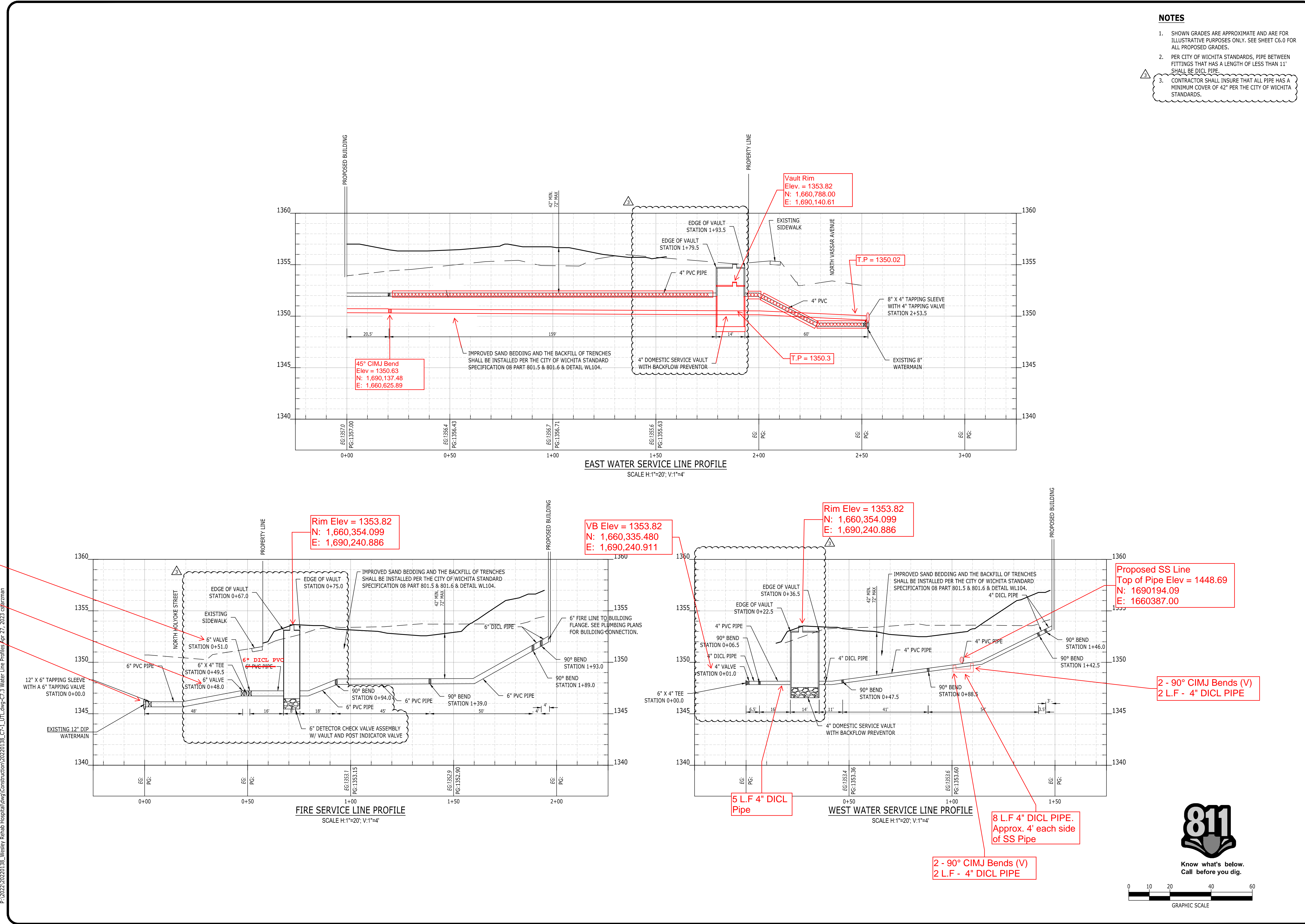
WESLEY MEDICAL CENTER REHABILITATION HOSPITAL
 833 N. VASSAR AVE., WICHITA, KANSAS 67214
 HCA# 316980002
 GTF# 3796309

VENDOR INFORMATION
 ARCHITECT: GOULD TURNER GROUP
 ENGINEER: STANLEY D. LINSLEY & ASSOC.
 M.P.E. & T. CONSULTANT: I.C. THOMASSON ASSOC., INC.
 STRUCTURAL CONSULTANT: STANLEY D. LINSLEY & ASSOC.
 CIVIL & LANDSCAPE CONSULTANT: CATALYST DESIGN GROUP
 HCA CONSTRUCTION MANAGER: MARC BRIBERDIS



PPW UTILITY PLAN

C7.01



WESLEY MEDICAL CENTER, INC.
550 N. HILLSIDE ST.
WICHITA, KS 67214

WESLEY MEDICAL CENTER REHABILITATION HOSPITAL
WICHITA, KANSAS

NO.	DATE	CONSTRUCTION DOCUMENTS DESCRIPTION
1	11/18/2022	CONSTRUCTION DOCUMENTS

WATER LINE PROFILES
PROJECT NUMBER: 20220138
DRAWING NUMBER: **C7.3**

CIVIL & LANDSCAPE CONSULTANT:
STANLEY D. LINDSEY & ASSOC.
750 OLD HICKORY BLVD., BUILDING 1,
NASHVILLE, TN 37205
MANAGER: TAYLOR PATERSON

M.P.E. & T. CONSULTANT:
I.C. THOMASSON ASSOC., INC.
2850 HERAFIT DRIVE
NASHVILLE, TENNESSEE 37204
MANAGER: PHIL DAVIS

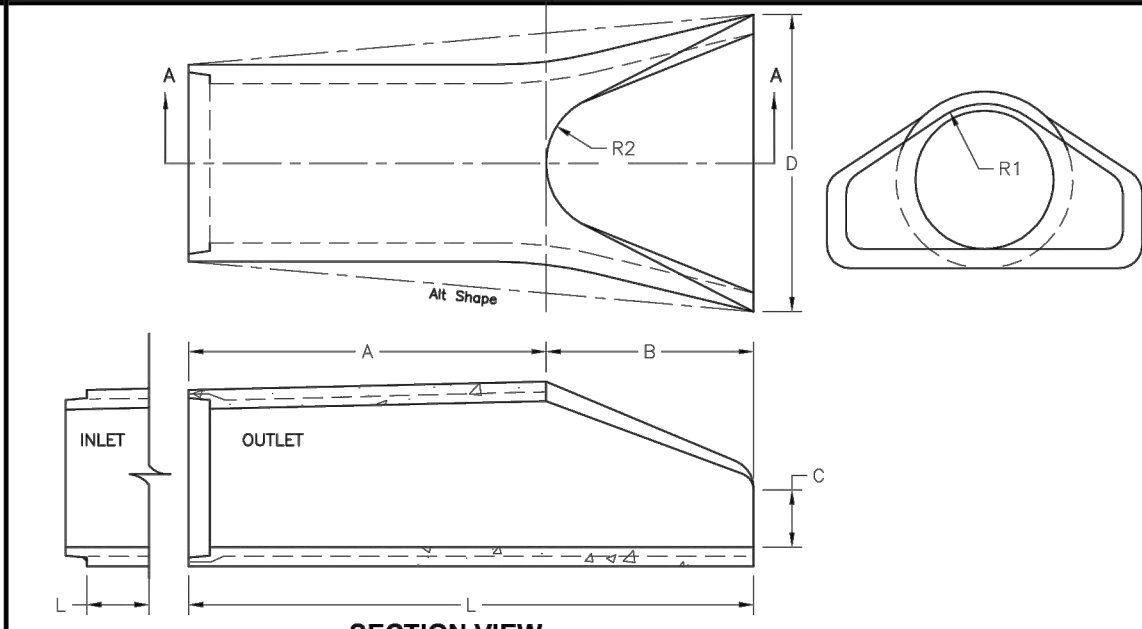
HCA DESIGN MANAGER:
ZACH WIERMAN

HCA CONSTRUCTION MANAGER:
MARC BRIBERDIS

WESLEY MEDICAL CENTER REHABILITATION HOSPITAL
833 N. VASSAR AVE., WICHITA, KANSAS 67214
HCA# 316900002
GT# 3796309

VENDOR INFORMATION
MARC BRIBERDIS
1111 S. W. 10TH AVE., SUITE 100
MIAMI, FL 33135
PH: 305.444.1111
WWW.MARC-BRIBERDIS.COM





ROUND PIPE FLARED END SECTIONS

DIAMETER	WATER AREA	OVERALL LAYING LENGTH	BARRELS	FLARE LENGTH	FLARE RADIUS	R1	R2	WALL THICKNESS	WEIGHT
12	0.79	6'-11"	4'-11"	2'-0"	4	24	10 1/8	9	2
15	1.23	6'-11"	3'-10"	2'-3"	6	30	12 1/2	11	2 1/4
18	1.77	6'-11"	3'-10"	2'-3"	9	36	15 1/2	12	2 1/2
24	3.14	6'-11"	2'-6"	3'-7"	8 1/2	48	18 1/2	14	3
30	4.91	6'-11"	1'-7"	4'-6"	12	60	18 1/2	15	3 1/2
36	7.07	6'-11"	2'-11"	5'-3"	15	72	24 5/16	20	4
42	9.62	6'-11"	2'-11"	5'-3"	21	78	27 1/2	22	4 1/2
48	12.57	6'-11"	2'-2"	6'-0"	24	84	28 1/2	22	5
54	15.90	6'-11"	2'-2"	6'-0"	27	90	33 1/8	24	5 1/2
60	19.63	6'-11"	2'-3"	7'-0"	30	96	36 1/4	24	6
66	23.74	6'-11"	2'-3"	6'-0"	24	102	36 1/8	24	6 1/2

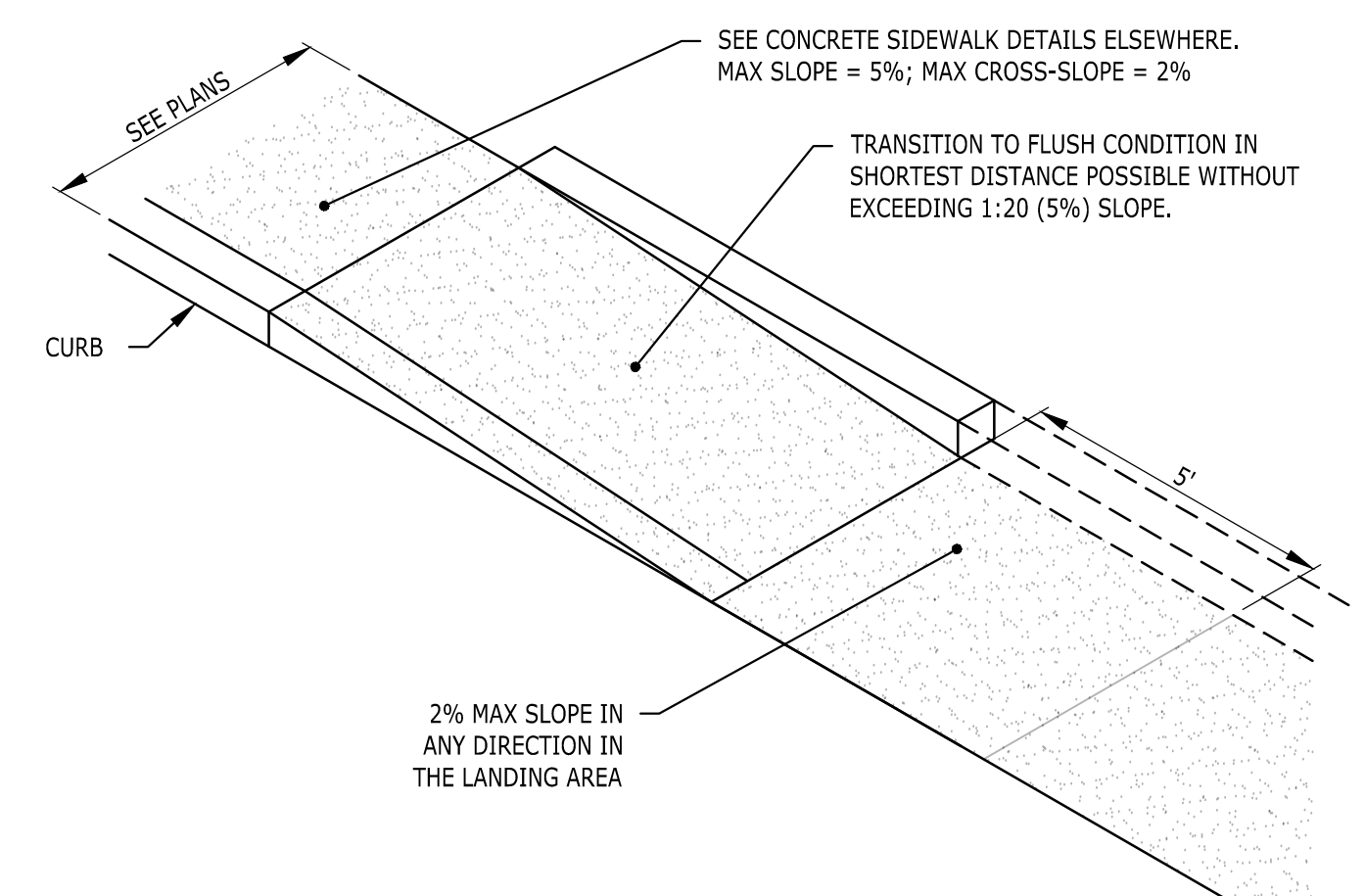
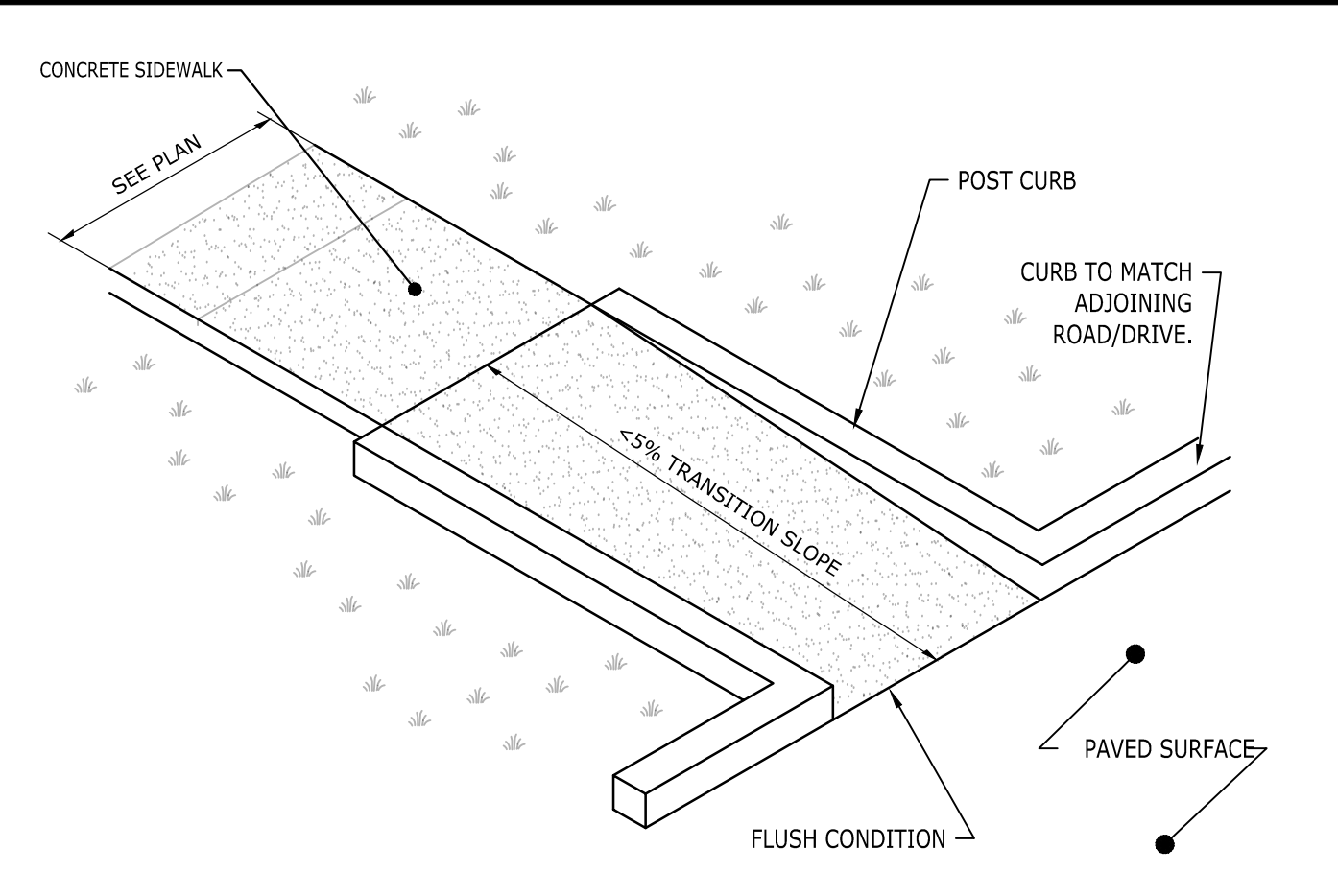
MEETS ASTM C-76

Oldcastle Precast Vanguard

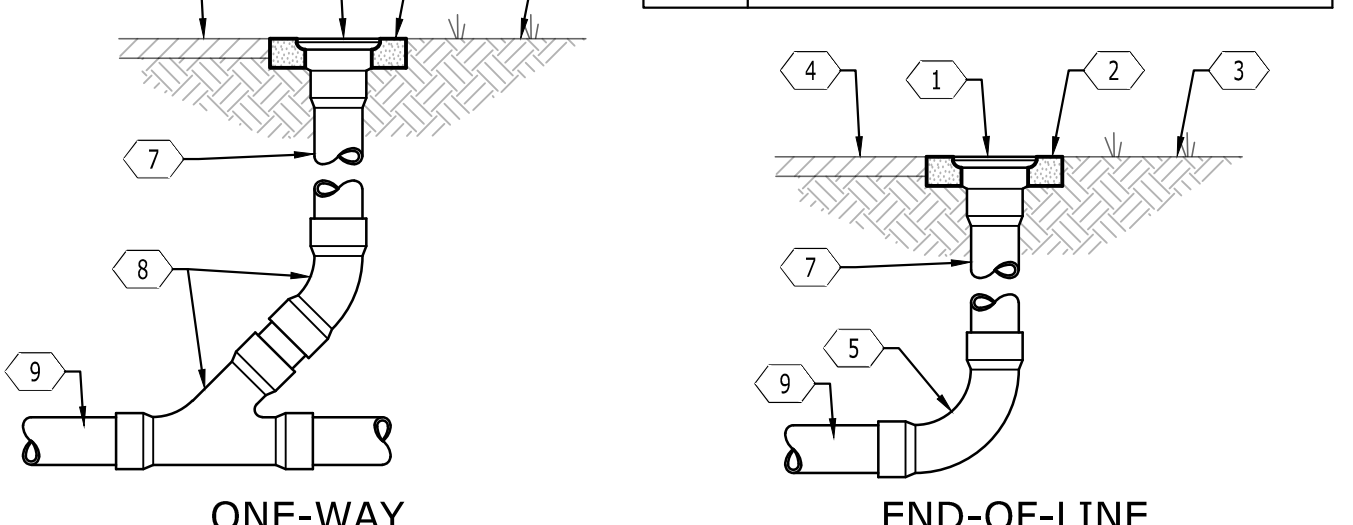
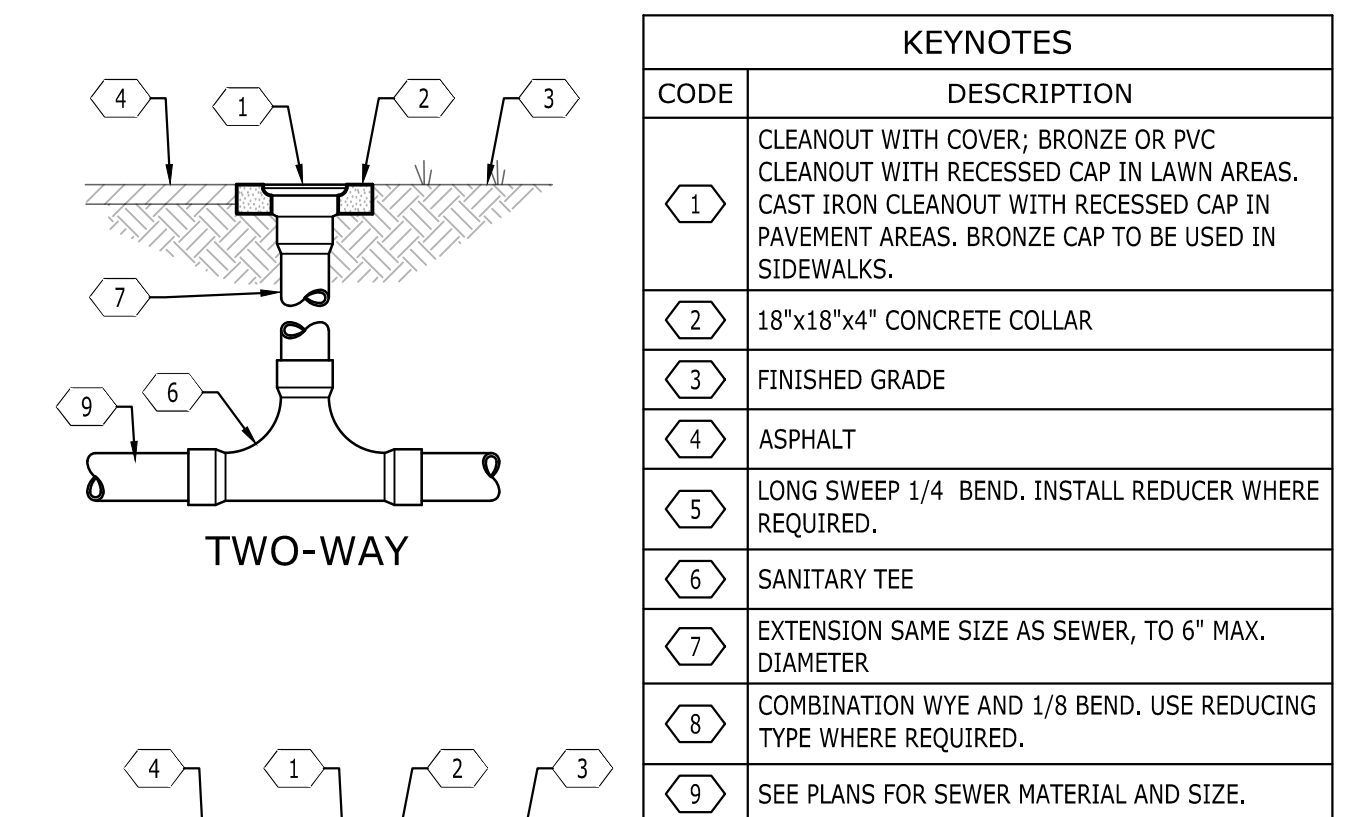
1230 N.W. 176 Street, Fort Lauderdale, FL 33315
Phone: 754-233-2953 Fax: 754-233-2942

PIPEDATA Round Flared End Section Data Sheet
REV. 04/15/2007
www.vanguardprecast.com

8 12" OUTLET HEADWALL
NOT TO SCALE



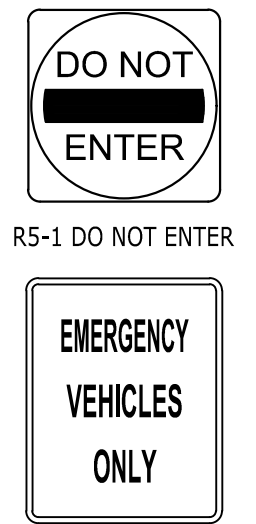
7 SIDEWALK TRANSITION
NOT TO SCALE



4 CLEANOUTS
NOT TO SCALE

KEYNOTES

CODE	DESCRIPTION
1	CLEANOUT WITH COVER, BRONZE OR PVC. CLEANOUT WITH RECESSED CAP IN LAWN AREAS. CAST IRON CLEANOUT WITH RECESSED CAP IN PAVEMENT AREAS. BRONZE CAP TO BE USED IN SIDEWALKS.
2	18"x18"x4" CONCRETE COLLAR
3	FINISHED GRADE
4	ASPHALT
5	LONG SWEEP 1/4 BEND. INSTALL REDUCER WHERE REQUIRED.
6	SANITARY TEE
7	EXTENSION SAME SIZE AS SEWER, TO 6" MAX. DIAMETER
8	COMBINATION WYE AND 1/8 BEND. USE REDUCING TEE WHERE REQUIRED.
9	SEE PLANS FOR SEWER MATERIAL AND SIZE.



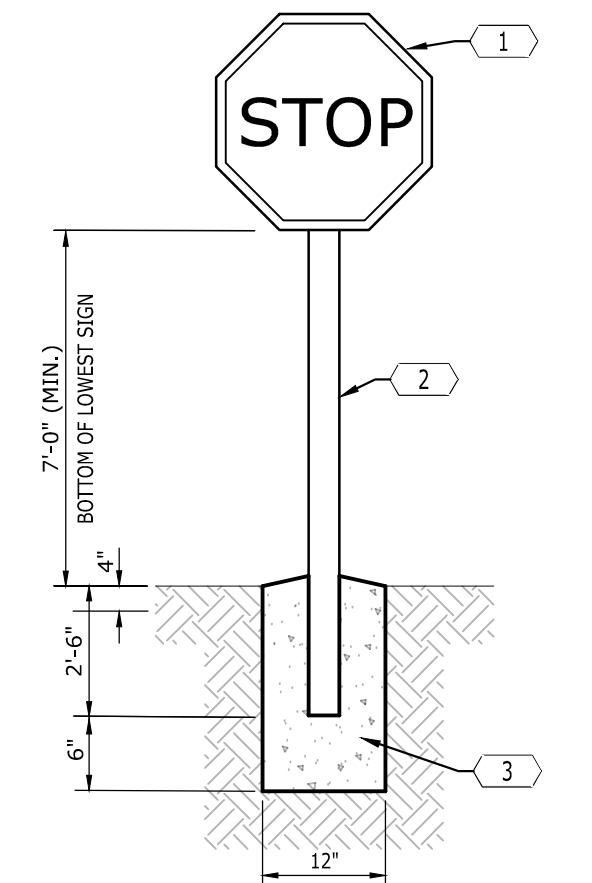
RS-1 DO NOT ENTER

EMERGENCY VEHICLES ONLY

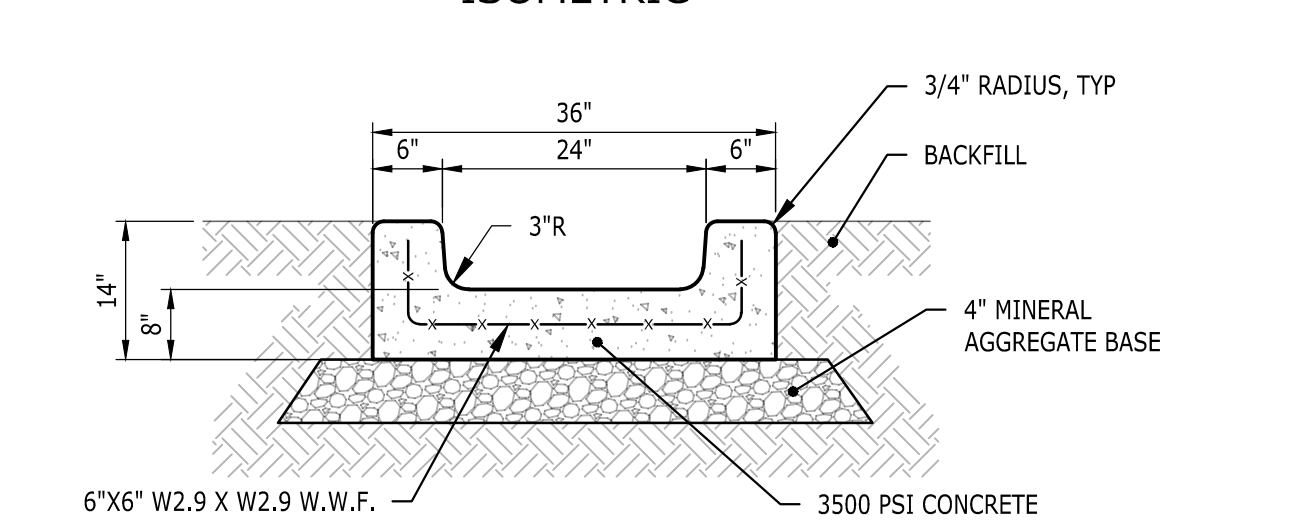
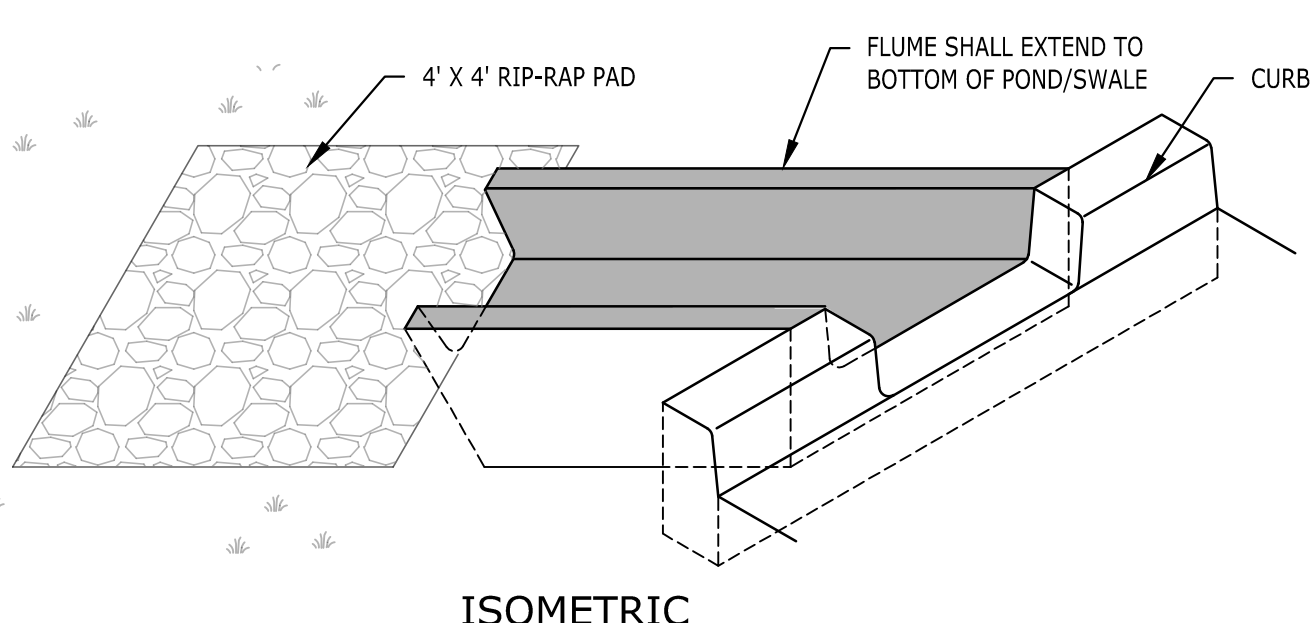
KEYNOTES

CODE	DESCRIPTION
1	R1-1 STOP SIGN (30" X 30") STANDARD
2	2" SQUARE GALVANIZED STEEL TUBE. PROVIDE WELDED CAP AT TOP AND GRIND WELDS SMOOTH.
3	CONCRETE FOOTING

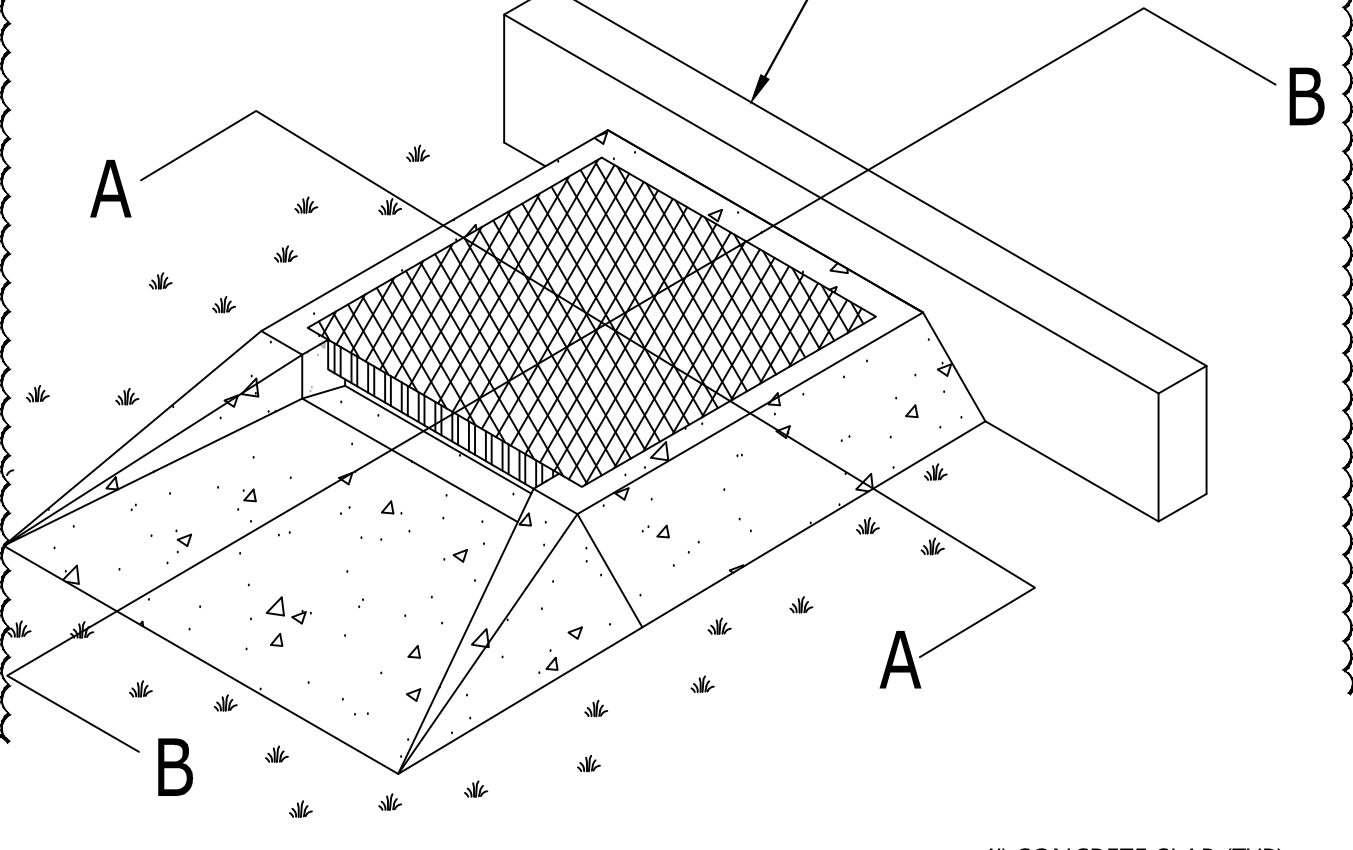
NOTE: SIGN SHALL BE LOCATED 3' FROM THE EDGE OF THE PAVEMENT UNLESS SUCH PLACEMENT WOULD OBSTRUCT THE SIDEWALK.



1 STOP SIGN
NOT TO SCALE



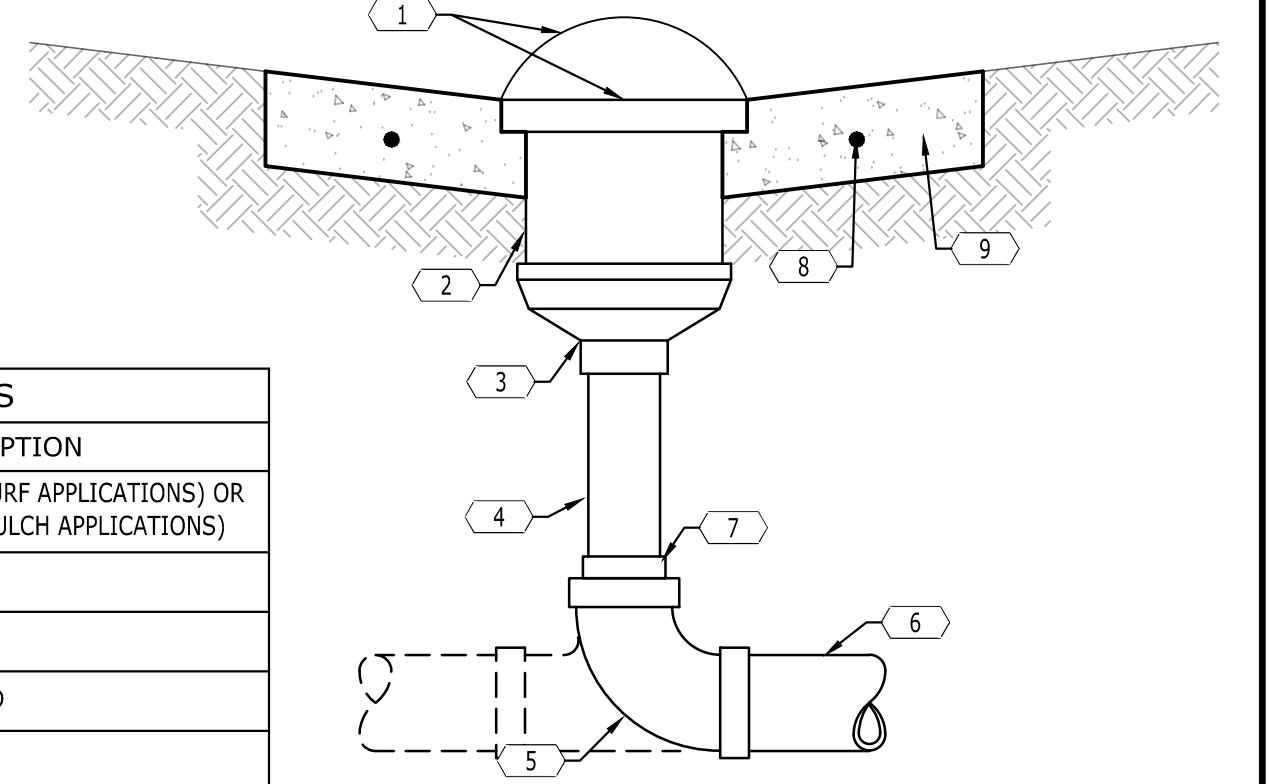
9 CONCRETE FLUME
NOT TO SCALE



KEYNOTES

CODE	DESCRIPTION
1	NDS 1211 GRATE (FOR TUBE APPLICATIONS) OR NDS 1881 GRATE (FOR MULCH APPLICATIONS)
2	NDS 1216 RISER BOX
3	NDS 1230 HUB ADAPTOR
4	6" PVC, LENGTH AS REQ'D
5	8" PVC ELL OR TEE
6	8" PVC STORM PIPE
7	8" X 6" PVC REDUCER. MAY BE OMITTED IF REDUCING TEE IS USED.
8	No. 4 BAR, CONT.
9	4" THICK CONCRETE COLLAR

5 12" NDS DRAIN INLET
NOT TO SCALE



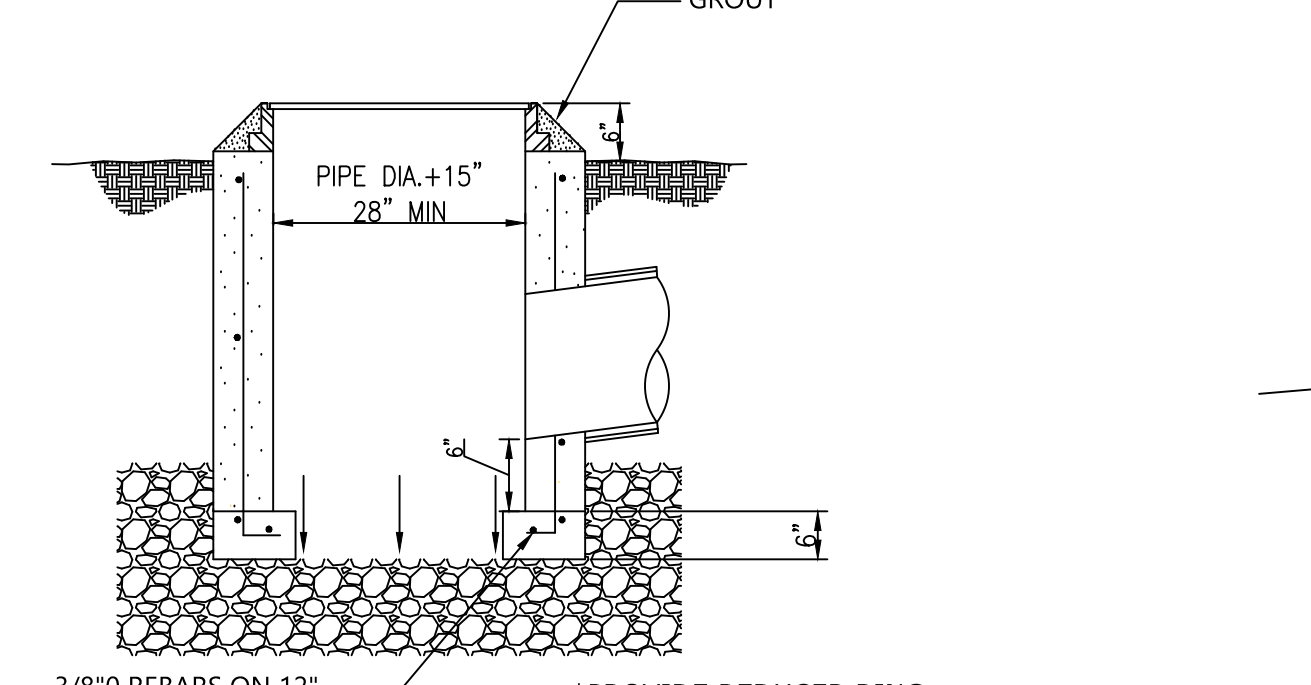
KEYNOTES

CODE	DESCRIPTION
1	12"x18" REFLECTIVE ALUMINUM SIGN; USE ITEM NO. G-668AS BY GR500 A DIVISION OF U.S. SIGNCRAFTERS (1-800-659-6319), (www.usigncrafters.com)
2	COLUMN
3	MOUNT SIGN TO COLUMN WITH CENTER OF SIGN 60" ABOVE FINISH GRADE; FASTEN SIGN AT EACH CORNER TO ASSURE FLUSH INSTALLATION
4	MOUNT SIGN TO BUILDING WITH CENTER OF SIGN 60" ABOVE FINISH GRADE; FASTEN SIGN AT EACH CORNER TO ASSURE FLUSH INSTALLATION.

NOTE: WHERE NECESSARY, THE ACCESSIBLE LOADING SIGN MAY BE MOUNTED IN A MANNER SIMILAR TO THE ACCESSIBLE PARKING SIGN DETAIL.



2 PASSENGER LOADING SIGN
NOT TO SCALE

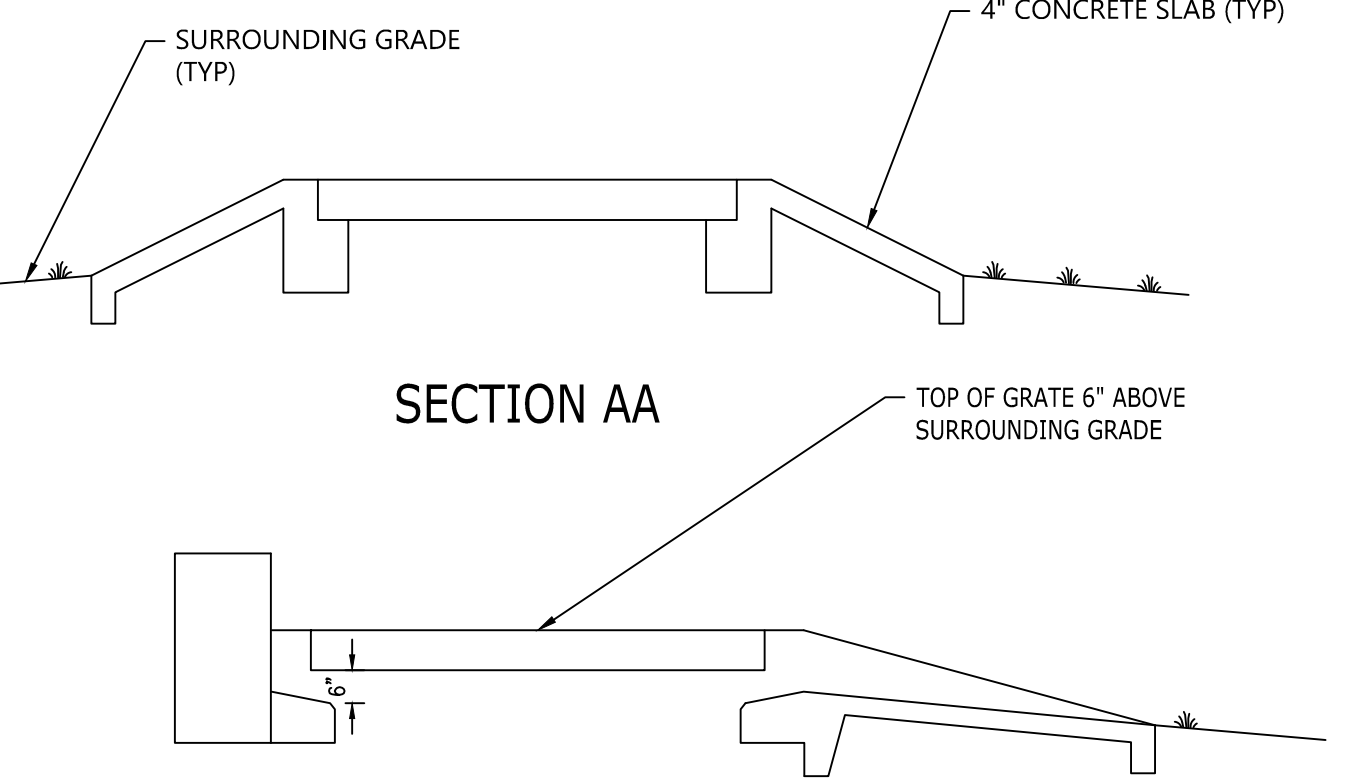


3/8" REBARS ON 12" CENTERS BOTH WAYS (GRADE 60)

*PROVIDE REDUCER RING AS NECESSARY TO ACCOMMODATE PROPOSED CASTING. ADJUST STRUCTURE DIMENSIONS AS NECESSARY TO RECEIVE STORM PIPE ON SKEWS.

**GRATE AND STRUCTURE IS A MODIFIED CITY OF WICHITA DROP-INLET. SEE CITY OF WICHITA STANDARD DETAIL SW-201 FOR MORE INFORMATION AS APPLICABLE.

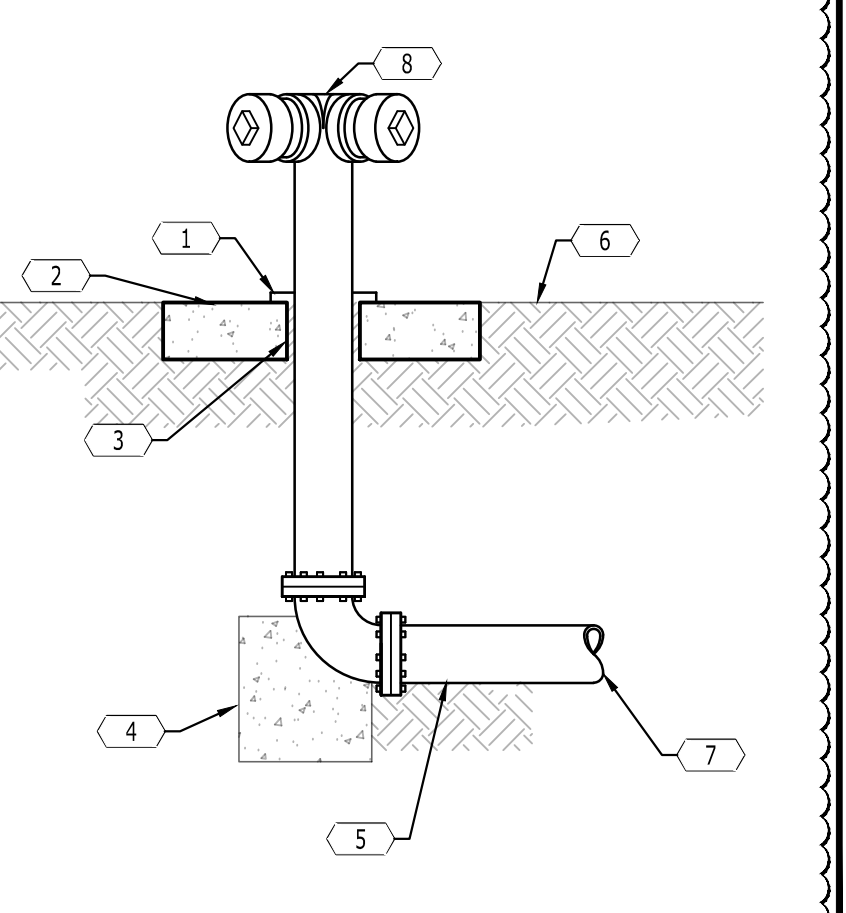
10 BUBBLE-UP OUTFALL STRUCTURE
NOT TO SCALE



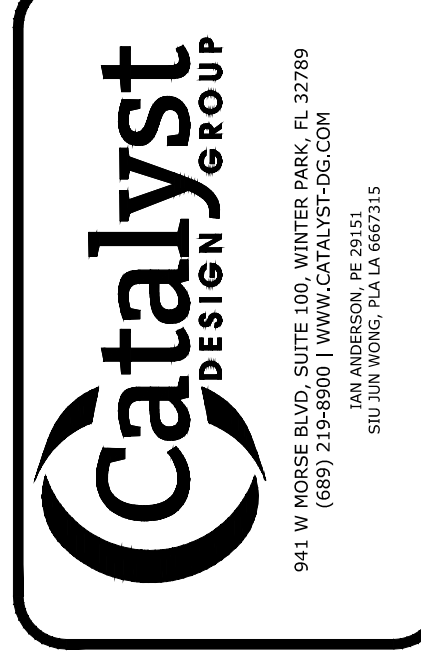
KEYNOTES

CODE	DESCRIPTION
1	TRIM COLLAR
2	24" SQUARE X 4" CONCRETE COLLAR WHERE CONNECTION IS PLACED IN TURF
3	ELASTOMERIC JOINT SEALER
4	THRUST BLOCK
5	4" CLASS 350 D.I.P.
6	FINISHED GRADE
7	SEE DETAIL W-103 FOR CONTINUATION TO VAULT
8	POTTER-ROEMER FIG. 5761-D 4" X 2.5" 2-WAY FIRE DEPARTMENT SIAMSE CONNECTION. THREAD SHALL MATCH LOCAL FIRE DEPARTMENT. PAINT FEATURE WITH TWO COATS OF RED ENAMEL UNLESS OTHERWISE SPECIFIED.

6 REMOTE FIRE DEPT. CONNECTION
NOT TO SCALE



3 RESERVED
NOT TO SCALE



Wesley Medical Center, Inc.
550 N. HILLSIDE ST.
WICHITA, KS 67214

Wesley Medical Center Rehabilitation Hospital
WICHITA, KANSAS

NO.	DATE	DESCRIPTION
1	11/18/2022	CONSTRUCTION DOCUMENTS

DETAILS

PROJECT NUMBER: 20220138
DRAWING NUMBER: C8.1

CIVIL & LANDSCAPE CONSULTANT:
CATALYST DESIGN GROUP
5100 TENNESSEE AVENUE
NASHVILLE, TENNESSEE 37027
MANAGER: PAUL ANDERSON

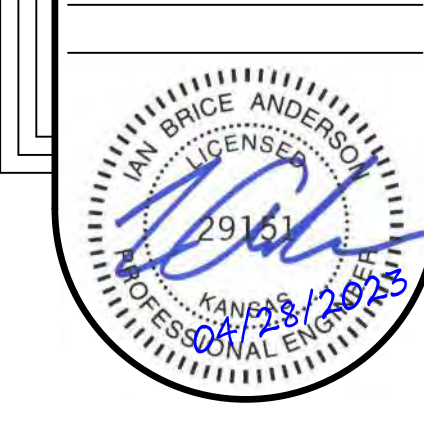
STRUCTURAL CONSULTANT:
STANLEY D. LINDSEY & ASSOC.
750 OLD HICKORY BLVD., BUILDING 1,
NASHVILLE, TENNESSEE 37027
MANAGER: MARK HILNER

M.P.E. & T. CONSULTANT:
I.C. THOMASSON ASSOC., INC.
2850 KRAFT DRIVE
NASHVILLE, TENNESSEE 37204
MANAGER: PAUL BARBER

HCA CONSTRUCTION MANAGER:
MARC BRISBEN

VENDOR INFORMATION

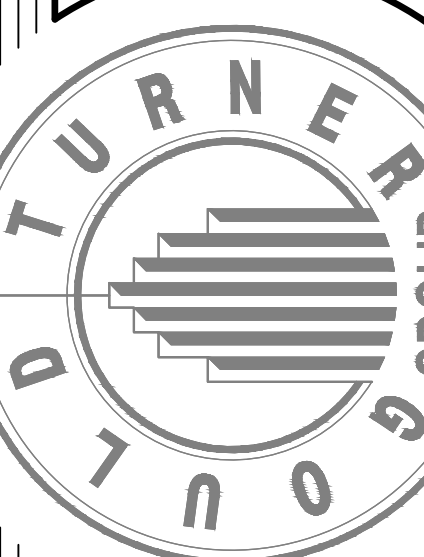
REVISIONS:
1. REVISION 11/12/2021
2. AMENDMENT 11/17/2021
3. AMENDMENT 11/31/2021
4. AMENDMENT 11/4/2021
DATE: 11/18/2022



DETAILS

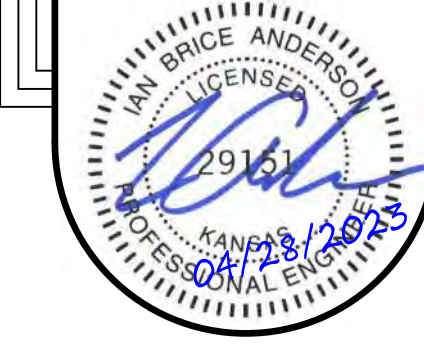
C8.1

GOULD TURNER GROUP, P.C.
ARCHITECTURE
615 3RD AVE SOUTH, SUITE 700
NASHVILLE, TENNESSEE 37210
© Copyright by Gould Turner Group - 2022



Wesley Medical Center Rehabilitation Hospital
833 N. VASSAR AVE., WICHITA, KANSAS 67214
HCA# 3163000022
CFC# 3706309

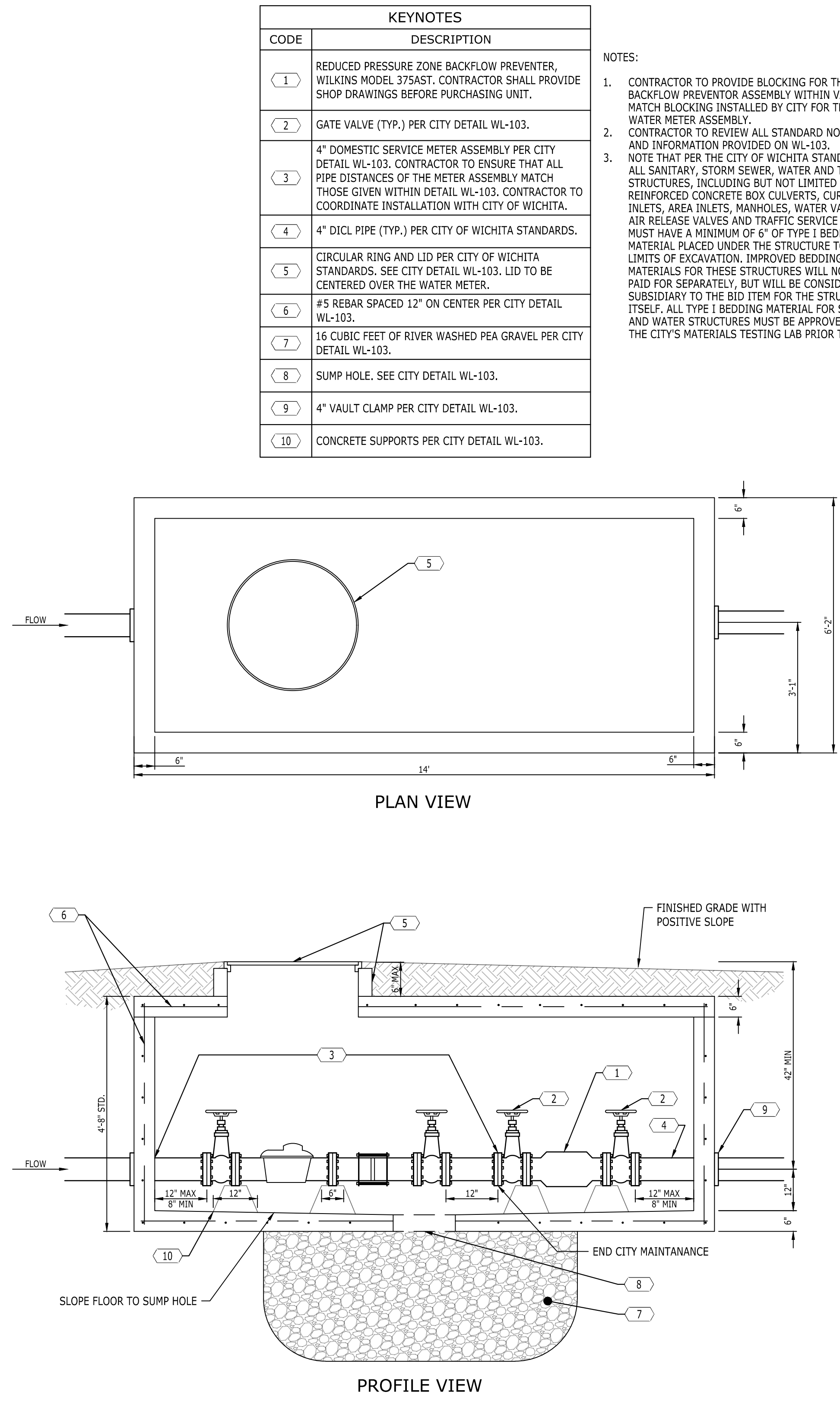
Wesley Medical Center Rehabilitation Hospital
833 N. VASSAR AVE., WICHITA, KANSAS 67214
HCA# 3163000022
CFC# 3706309



DETAILS

C8.1

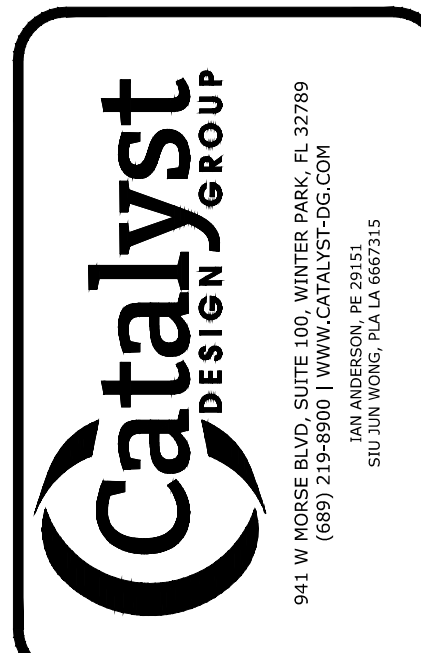
P:\2022\20220138 - Wesley Rehab Hospital\dwg\construction\20220138_C8.2_DET_Aug-22.dwg, Apr 27, 2022, cstrman



4" REDUCED PRESSURE BACKFLOW PREVENTER AND CITY OF WICHITA METER ASSEMBLY IN BOX
NOT TO SCALE

KEYNOTES	
CODE	DESCRIPTION
1	REDUCED PRESSURE ZONE BACKFLOW PREVENTER, WILKINS MODEL 375AST. CONTRACTOR SHALL PROVIDE SHOP DRAWINGS BEFORE PURCHASING UNIT.
2	GATE VALVE (TYP.) PER CITY DETAIL WL-103.
3	4" DOMESTIC SERVICE METER ASSEMBLY PER CITY DETAIL WL-103. CONTRACTOR TO ENSURE THAT ALL PIPE DISTANCES OF THE METER ASSEMBLY MATCH THOSE GIVEN WITHIN DETAIL WL-103. CONTRACTOR TO COORDINATE INSTALLATION WITH CITY OF WICHITA.
4	4" DI CL PIPE (TYP.) PER CITY OF WICHITA STANDARDS.
5	CIRCULAR RING AND LID PER CITY OF WICHITA STANDARDS. SEE CITY DETAIL WL-103. LID TO BE CENTERED OVER THE WATER METER.
6	#5 REBAR SPACED 12" ON CENTER PER CITY DETAIL WL-103.
7	15 CUBIC FEET OF RIVER WASHED PEA GRAVEL PER CITY DETAIL WL-103.
8	SUMP HOLE. SEE CITY DETAIL WL-103.
9	4" VAULT CLAMP PER CITY DETAIL WL-103.
10	CONCRETE SUPPORTS PER CITY DETAIL WL-103.

- NOTES:
- CONTRACTOR TO PROVIDE BLOCKING FOR THE BACKFLOW PREVENTOR ASSEMBLY WITHIN VAULT TO MATCH BLOCKING INSTALLED BY CITY FOR THE WATER METER ASSEMBLY.
 - CONTRACTOR TO REVIEW ALL STANDARD NOTES AND INFORMATION PROVIDED ON WL-103.
 - NOTE THAT PER THE CITY OF WICHITA STANDARDS, ALL SANITARY, STORM SEWER, WATER AND TRAFFIC STRUCTURES, INCLUDING BUT NOT LIMITED TO REINFORCED CONCRETE BOX CULVERTS, CURB INLETS, AREA INLETS, MANHOLES, WATER VAULTS, AIR RELEASE VALVES AND TRAFFIC SERVICE BOXES MUST HAVE A MINIMUM OF 6" OF TYPE I BEDDING MATERIAL PLACED UNDER THE STRUCTURE TO THE LIMITS OF EXCAVATION. IMPROVED BEDDING MATERIALS FOR THESE STRUCTURES WILL NOT BE PAID FOR SEPARATELY, BUT WILL BE CONSIDERED SUBSIDIARY TO THE BID ITEM FOR THE STRUCTURE ITSELF. ALL TYPE I BEDDING MATERIAL FOR SEWER AND WATER STRUCTURES MUST BE APPROVED BY THE CITY'S MATERIALS TESTING LAB PRIOR TO USE.



WESLEY MEDICAL CENTER, INC.
550 N. HILLSIDE ST.
WICHITA, KS 67214

WESLEY MEDICAL CENTER REHABILITATION HOSPITAL
WICHITA, KANSAS

NO.	DATE	DESCRIPTION
1	11/18/2022	CONSTRUCTION DOCUMENTS

DETAILS
PROJECT NUMBER: 20220138
DRAWING NUMBER: C8.2

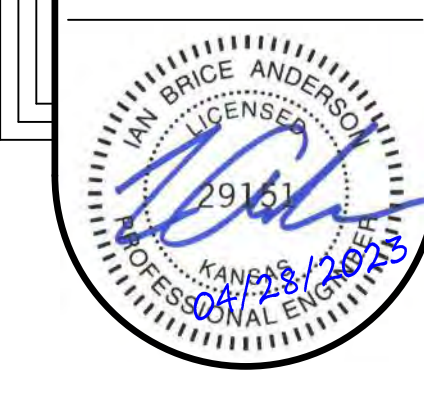
AMENDMENT 3 NOTE
1. THIS IS A NEW SHEET THAT HAS BEEN ADDED TO BE ABLE TO INCLUDE A NEW DETAIL TO FULFILL CITY SUBMITTAL REQUIREMENTS.

CIVIL & LANDSCAPE CONSULTANT
CATALYST DESIGN GROUP
5100 TENNESSEE AVENUE
NASHVILLE, TENNESSEE 37027
MANAGER: JON ANDERSON

STRUCTURAL CONSULTANT
STANLEY D. LINDSEY & ASSOC.
750 OLD HICKORY BLVD., BUILDING 1,
NASHVILLE, TENNESSEE 37027
MANAGER: MARK HILNER

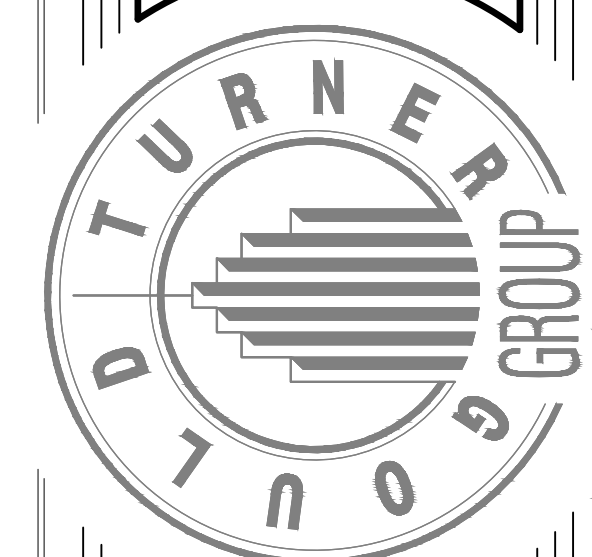
M.P.E. & T. CONSULTANT
I.C. THOMASSON ASSOC., INC.
2850 KRAFT DRIVE
NASHVILLE, TENNESSEE 37204
MANAGER: PUL BASSIE

HCA HealthCare
HCA DESIGN MANAGER:
ZACH WIDEMAN
HCA CONSTRUCTION MANAGER:
MARC BRIBEBOS



DETAILS
C8.2

WESLEY MEDICAL CENTER REHABILITATION HOSPITAL
833 N. VASSAR AVE., WICHITA, KANSAS 67214
HCA# 3165800052
C/F# 3706309



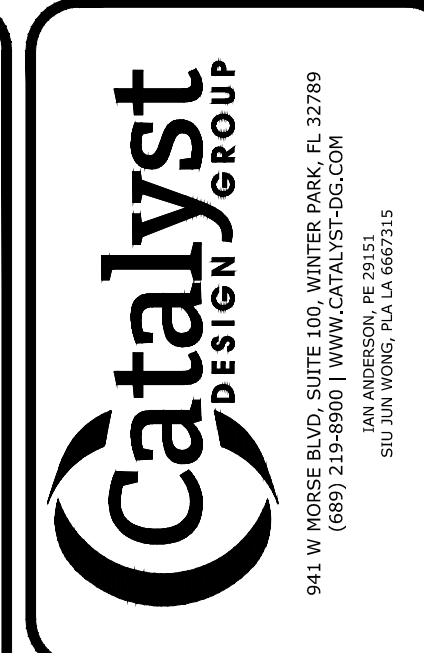
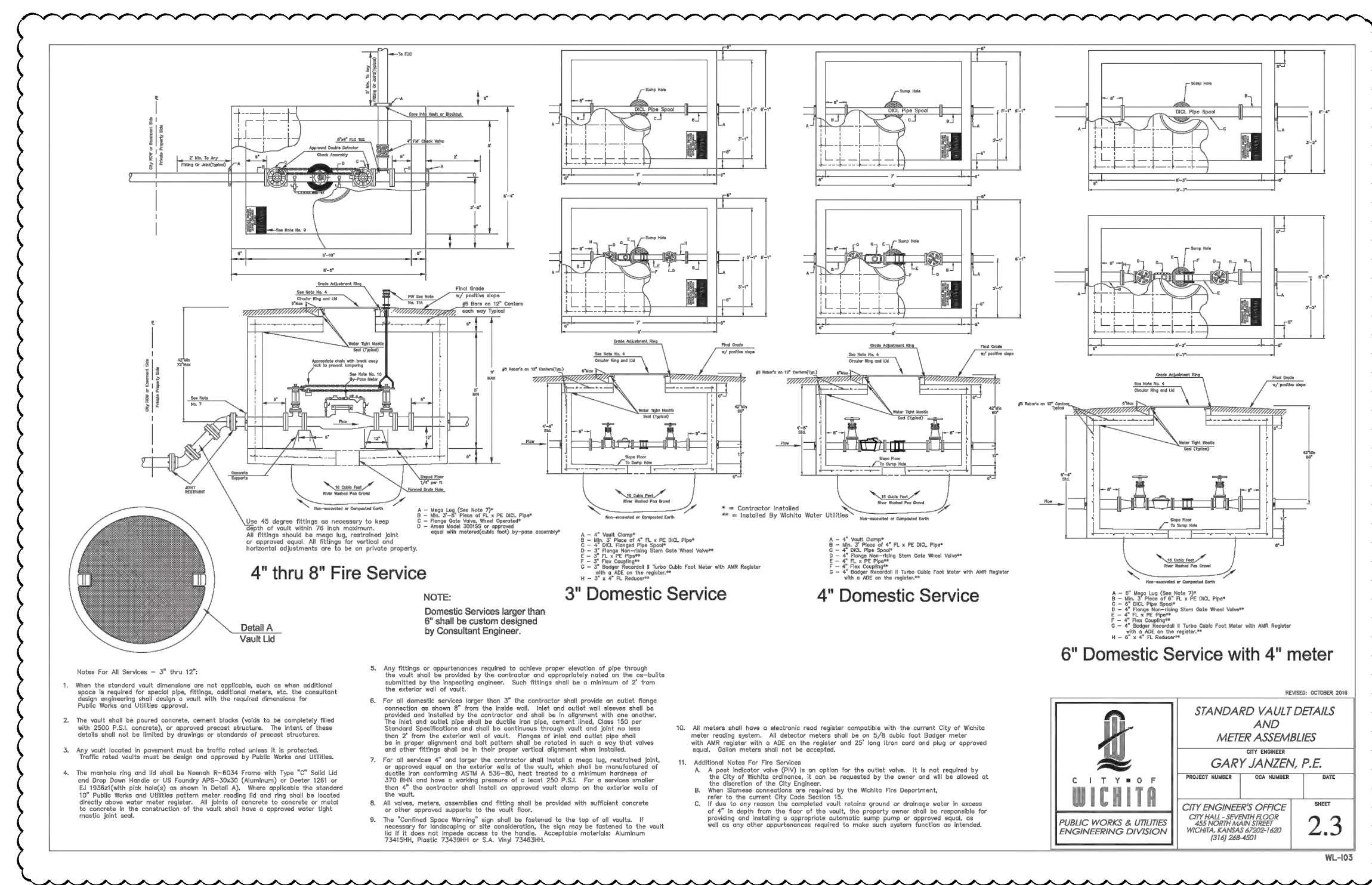
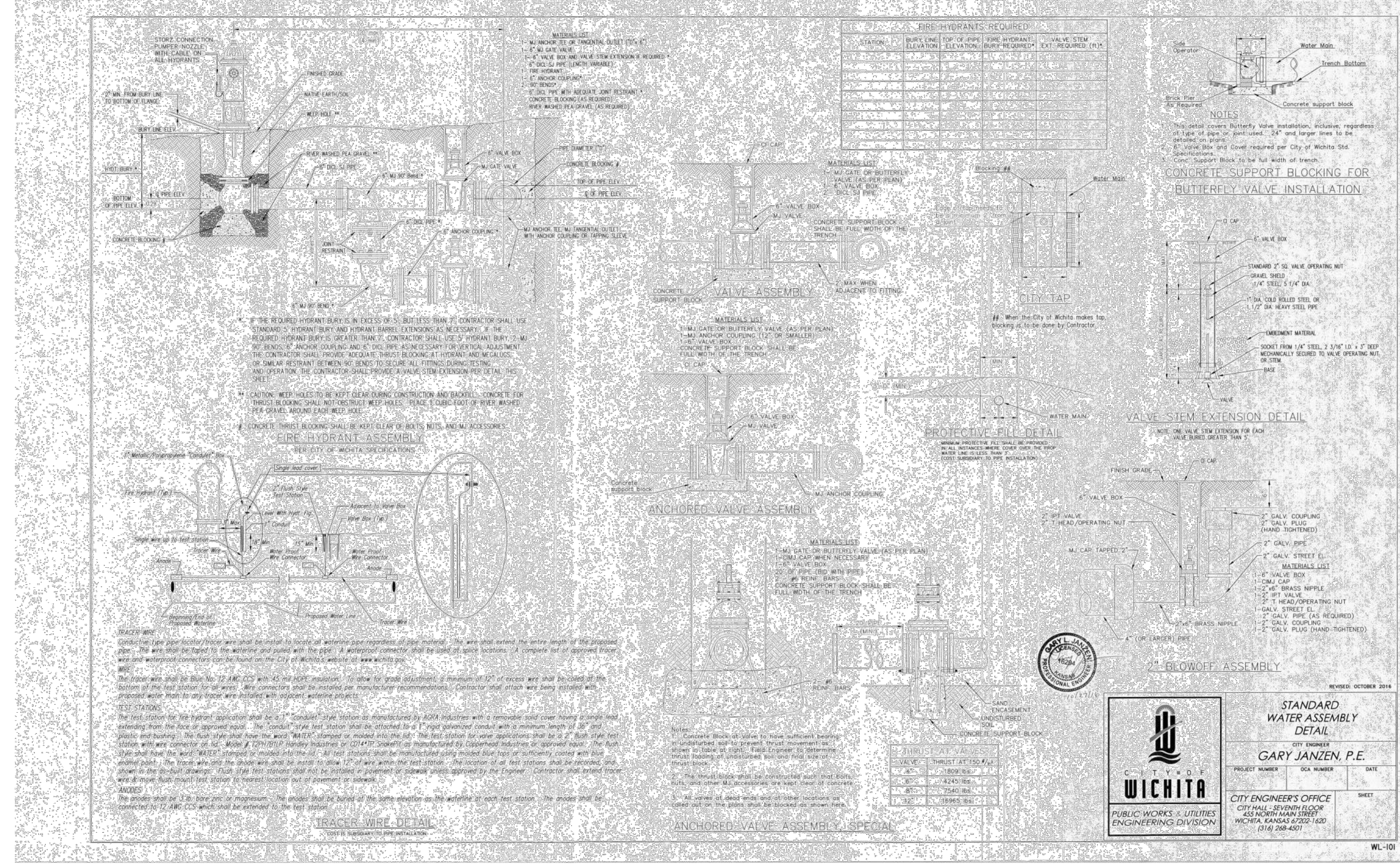
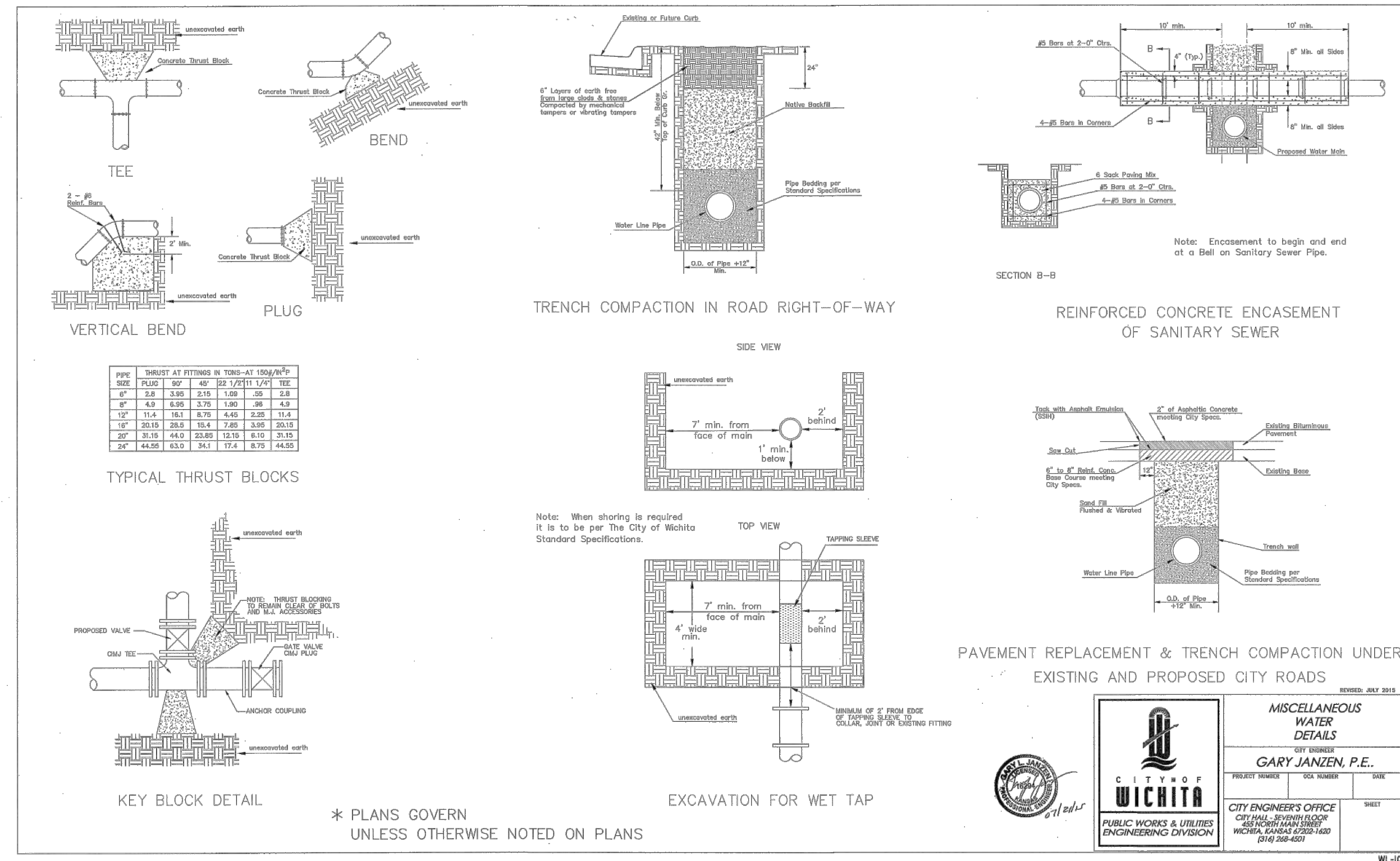
GOULD TURNER GROUP, P.C.
ARCHITECTURE
615 3RD AVE SOUTH, SUITE 700
NASHVILLE, TENNESSEE 37210
© Copyright by Gould Turner Group, 2022

REVISIONS:
① AMENDMENT #1 1/12/2023
② AMENDMENT #2 2/17/2023
③ AMENDMENT #3 3/31/2023
④ AMENDMENT #4 4/29/2023
DATE:
11/18/2022

CONSTRUCTION DOCUMENTS

MARCO CLEAR SPACE

PL 2022020118, Wesley Rehab Hospital.dwg | Construction | 20220118, C9.1, CAT, Aug 23, 1:01 PM, Apr 27, 2022, cslaman



WESLEY MEDICAL CENTER, INC.
550 N. HILLSIDE ST.
WICHITA, KS 67214

WESLEY MEDICAL CENTER
REHABILITATION HOSPITAL
WICHITA, KANSAS

NO.	DATE	DESCRIPTION
1	11/7/2022	CONSTRUCTION DOCUMENTS

CITY DETAILS
PROJECT NUMBER: 20220138
DRAWING NUMBER: C9.1



HCA HEALTHPARTNERS
HCA DESIGN MANAGER:
ZACH WIERMAN
HCA CONSTRUCTION MANAGER:
MARC BRIBERIOS

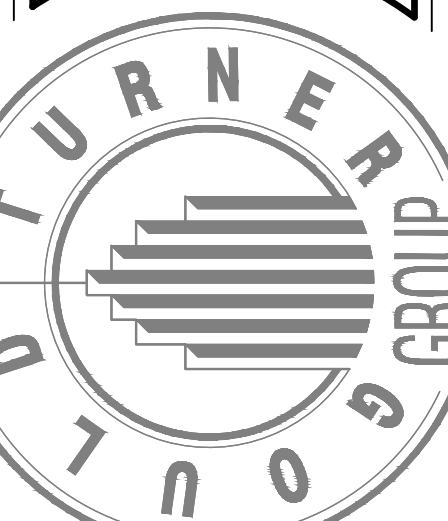
CIVIL & LANDSCAPE CONSULTANT:
CATALYST DESIGN GROUP
5100 TENNESSEE AVENUE
NASHVILLE, TN 37209
MANAGER: TIM ANDERSON

STRUCTURAL CONSULTANT:
STANLEY D. LINDSEY & ASSOC.
750 OLD HICKORY BLVD., BUILDING 1,
SUITE 170
NASHVILLE, TENNESSEE 37204
MANAGER: MARK HINER

M.P.E. & T. CONSULTANT:
I.C. THOMASSON ASSOC., INC.
2550 RERAFT DRIVE
NASHVILLE, TENNESSEE 37204
MANAGER: PAUL DAVIS

VENDOR INFORMATION
WICHITA CITY ENGINEERING OFFICE
GARY JANZEN, P.E.
PUBLIC WORKS & UTILITIES ENGINEERING DIVISION
1000 S. WASHINGTON ST., SUITE 100
WICHITA, KS 67202

WESLEY MEDICAL CENTER
REHABILITATION HOSPITAL
833 N. VASSAR AVE., WICHITA, KANSAS 67214
HCA# 316900002
GT# 3796309



GOULD TURNER GROUP, P.C.
ARCHITECTURE
615 3RD AVE SOUTH, SUITE 700
NASHVILLE, TENNESSEE 37210
© Copyright by Gould Turner Group, 2022

CONSTRUCTION DOCUMENTS

REVISIONS:
① ADDENDUM #1 1/12/2023
② AMENDMENT #1 2/17/2023
③ AMENDMENT #2 3/31/2023
④ AMENDMENT #3 4/28/2023
DATE: 11/18/2022

CITY DETAILS

C9.1