

GENERAL NOTES:

- The Contractor shall comply with all applicable safety regulations. All construction shall be completed following current City Standard Specifications and Special Provisions.
- Contractor will be required to provide notice to utility companies a minimum of seventy-two (72) hours prior to any excavation, as follows:
Kansas One-Call 687-2470
The Contractor must notify the following in case of an emergency:
AT&T 1-800-246-8464
Black Hills Energy 1-800-694-8989
City of Wichita Water & Sewer 1-316-219-8921
City of Wichita Stormwater 1-316-268-4090
City of Wichita Traffic 1-316-268-4034
Cox Communications 1-888-249-3530
Kansas Gas Service 1-888-482-4950
Westar Energy 1-800-544-4857
- Utility service lines, poles, etc. are to be adjusted as necessary by others prior to construction unless the plans specifically call for their adjustment by the Contractor or unless the plans specifically identify a utility to be adjusted by its owner during construction. Existing utilities and their location, as shown on the plans, represent the best information obtainable for design. The Contractor will be required to work around existing utilities within the right-of-way which do not conflict with proposed construction.
- Rubble from the removal of miscellaneous structures and excess excavation which is to be wasted shall be disposed of on sites to be provided by the Contractor. These sites shall be approved by the Engineer as to suitability, appearance and site location. Locations, in the opinion of the Engineer, that will leave an unsightly appearance will not be approved. All disposal sites must be approved by the Kansas Department of Health and Environment. Material either stockpiled or disposed of in a flood plain will require a Kansas State Board of Agriculture permit. Any material dumped in waters of the United States or wetlands is subject to U.S. Corps of Engineers permitting regulations. Any material buried or stockpiled beyond approved construction limits will require additional archaeological investigations unless buried in a previously approved borrow location.
- Trees and shrubs in public right-of-way which are in direct conflict with proposed new construction shall be removed by the Contractor with the City Engineer's approval. Trees and shrubs which are not in direct conflict with proposed new construction shall be saved and protected from damage.
- The Contractor shall give all property owners and/or tenants of developed property abutting the construction of this project a minimum of ten (10) days notice prior to start of construction.
- The Contractor shall be responsible for preserving property irons. The Contractor will be required to re-establish any property irons which are damaged or destroyed by his construction operations. Such irons shall be re-established by a licensed land surveyor in accordance with state laws.
- The Engineering Division shall field locate water valves one time during construction when requested by the Contractor. It shall be the Contractor's responsibility to preserve such field locations during the construction process. Water valves, valve boxes or fire hydrants damaged during construction shall be repaired by Contractor at his own expense. Valve boxes and water meters within the project limits shall be adjusted to match final grades by the contractor.
- The Contractor shall notify the consultant engineer and Dawnita Reinhardt at 316-650-0740 with the City of Wichita with the anticipated construction start date and notify them of project completion. Staking and inspection for this project will be the responsibility of the Contractor.
- If traffic will be impacted by construction, a traffic control plan must be submitted and approved by the City Traffic Engineer, Mike Armour at traffic@wichita.gov before construction can begin. The Contractor shall be responsible for all traffic control measures to facilitate construction. All construction zone markings and signage shall conform to the latest version of the Manual on Uniform Traffic Control Devices (MUTCD) as published by the US Dept. of Transportation, Federal Highway Administration. All costs associated with construction markings and signage shall be the Contractors responsibility.
- All elevations shown are NAVD 88.
- All areas disturbed during construction that will not be under proposed pavement shall be restored to match existing conditions.
- Any sidewalk, drive approach, curb, or street pavement removed to construct project must have a pavement cut permit and be replaced by the City contractor. Permits can be obtained by calling 316-268-4501 or 316-268-4480.
- All applicable fees (tap, equity, in lieu of & main benefit) must be paid before any work on this project can commence.
- City maintenance of water mains ends at right-of-way or easement line or within two feet of vault.
- Opening and closing of water valves shall be done slowly to prevent damage to the water distribution system from water hammer. All valves closed by the contractor must be reopened as new construction permits. The project inspector must ascertain that any valve closed by the Contractor is reopened. The contractor will be permitted to operate water valves only when the project inspector assigned to the project is present.
- The Contractor shall lay a Tracer Wire and Set Test Stations along all water pipe installed in accordance with City Specifications and Tracer Wire Detail on detail sheet WL-101, cost is subsidiary to pipe installation.
- The contractor shall provide materials for temporary blowoff of waterlines. Connections to the existing waterline(s) shall be made with clean, swabbed pipe and flushed upon completion of tie-ins.
- Requests for short term water interruptions shall be made to the City Water Distribution Division and will be subject to their approval. The Contractor shall give written notice to any property owner, business, and/or tenants that will have water service interrupted at least 5 days in advance. Such notifications should indicate the time and date that the water will be turned off and when the service will be restored. No business, property owner, and/or tenants shall be without water service for more than 8 hours. Proposed tie in locations which will affect water service to property owners shall be performed during non-peak hours.
- The Contractor must schedule the connections to the existing main with the City such that there is a minimum disruption of service. Connections shall be made during periods of low water usage. The Contractor shall submit his proposed schedule for completing work for City approval at least 10 days prior to beginning construction.
- Deflections at pipe joint or couplings shall not exceed the pipe manufactures recommended maximum. Where deflections are greater than the maximum allowed, the contractor shall utilize fittings.
- Any existing joint exposed during excavation shall be replaced if within four feet of proposed joint.
- Valves 12 inch and larger are to be operated by the City Water Distribution Division, 48 hours of advance notice is required with the water Dispatch at 316-291-8921.
- All wet taps shall be installed by the City of Wichita. The Contractor will reimburse the City for tapping fees prior to tap being made. Unless noted on plans.
- The Contractor shall protect from damage and support existing utilities through construction as approved by the utility owner and the Engineer at the contractors expense.
- Contractor shall limit the extent of trench openings overnight and weekends to less than 50 feet.
- Wichita Fire Department inspections may be scheduled by calling 316-650-0740.
- Maintain a minimum of 10-foot horizontal separation between all water lines (mains, services, and fire hydrants) and all sanitary sewer lines (mains, services, and manholes). All separation distances are to be measured from edge-to-edge at the closest point.
- Maintain a minimum of 2-foot vertical separation between all water lines (mains and services) and all gravity sanitary lines (mains, services, and manholes) at crossings. All separation distances are to be measured from edge-to-edge, at the closest point.
- Maintain a minimum of 2-foot vertical separation between all water lines (mains and services) and all pressurized sanitary sewer lines (force mains and services) at crossings. Waterlines must always be placed above pressurized sanitary sewer lines where they cross. All separation distances are to be measured edge-to-edge, at the closest point.

WATER DISTRIBUTION SYSTEM to serve Lot 2 Block 1 Cayetana Add.

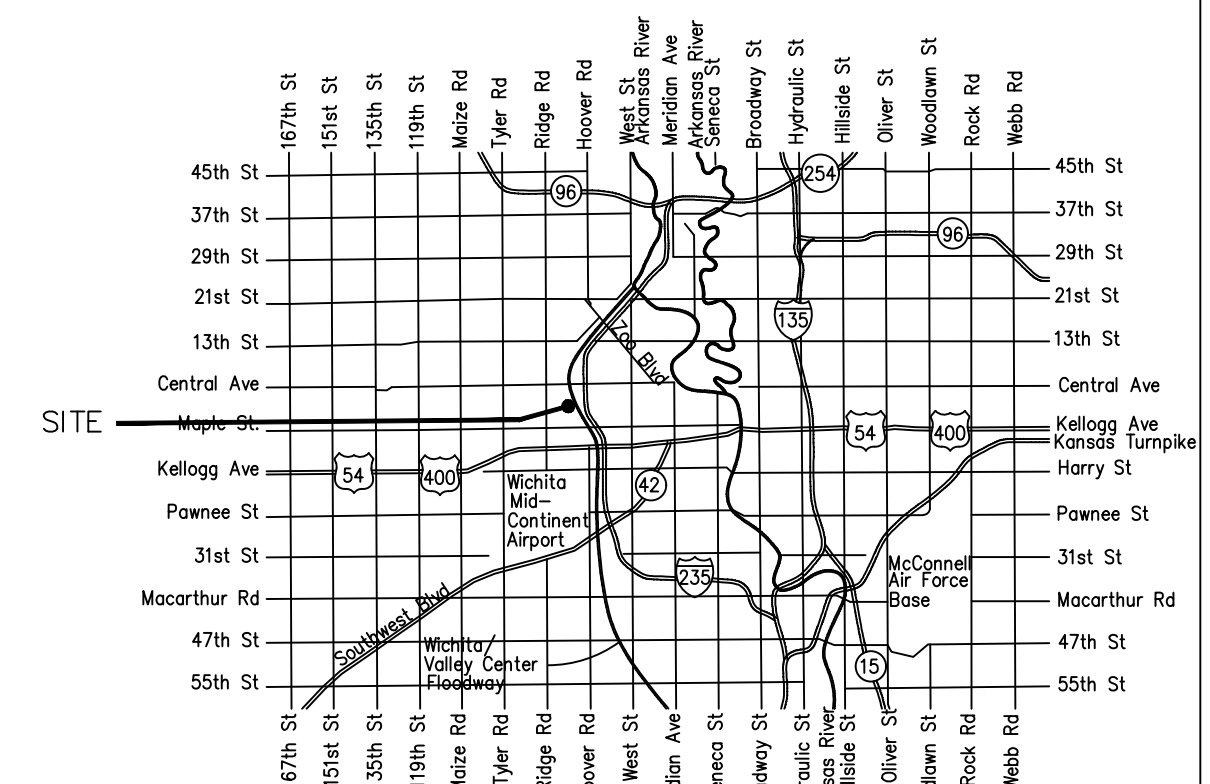
5800 W 3rd St.

CITY OF WICHITA, KANSAS

Gary Janzen, P.E. City Engineer

Project Number

2023-007407 PPW (54030980)



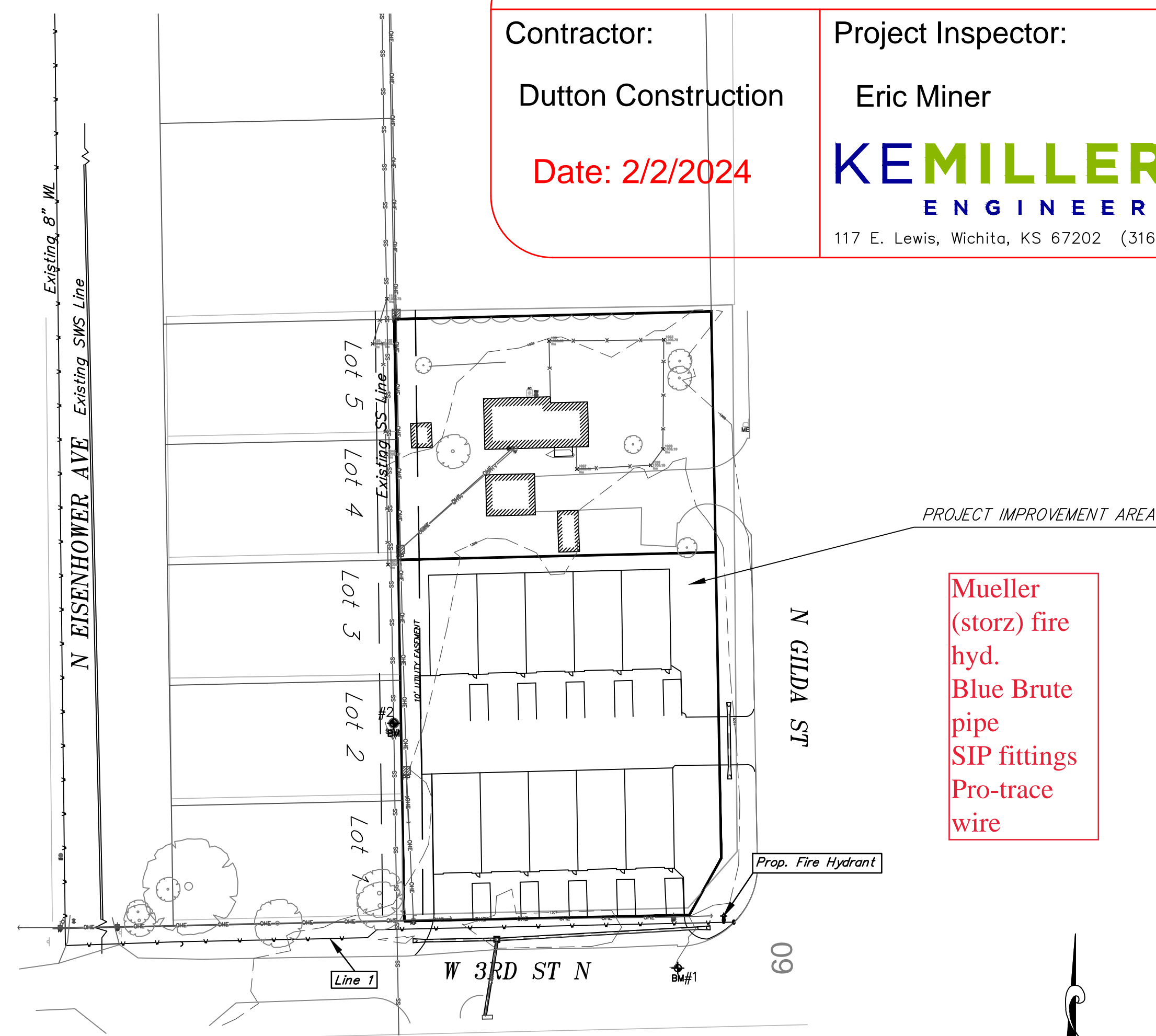
Vicinity Map

Sheet Index

- 1.0 Title Sheet
- 2.0 Control Plan
- 2.1 Standard Water Assembly Detail
- 2.2 Miscellaneous Water Details
- 3.0 Plan and Profile - Line 1
- 4.0 Erosion Control Plan
- 4.1-4.5 Erosion Control BMP Details
- 5.0 Plat (For Reference Only)

AS BUILTS

Contractor: Dutton Construction Date: 2/2/2024	Project Inspector: Eric Miner 117 E. Lewis, Wichita, KS 67202 (316)264-0242
--	--



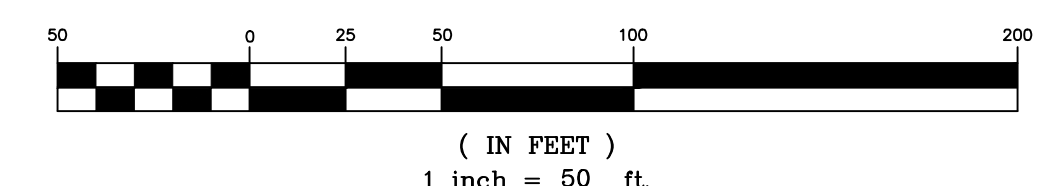
Benchmarks

BM#1:
Magnall 26.5' S and 6' W of SE Property Corner
Elev. = 1308.04 NAVD88

BM#2:
Center of SSMH Lid approx. 98.5' North and 3.5' west of SW Property Corner
Elev. = 1308.35 NAVD88



THIS SHEET HAS BEEN SIGNED, SEALED AND DATED DIGITALLY



APPROVED AS NOTED
BY WICHITA PUBLIC WORKS
ENGINEERING DIVISION
& BY WICHITA FIRE DEPARTMENT

Engineering approved by Shawn Mellies on this day the 18th of April, 2023

Utilities approved by Greg Lolley on this day the 18th of April, 2023

Fire Dept. approved by Jose Oeadiz on this day the 18th of April, 2023

NOTE TO CONTRACTORS

Public Property:
Inspection and testing for the waterline is to be provided by a Licensed Consulting Engineering Firm under contract with the Owner/Developer. Said inspection is to be in accordance with the City of Wichita standard construction engineering practices and certified by a Professional Engineer Licensed in the state of Kansas. No work shall be performed in dedicated easements or public right-of-way by the Contractor without such inspection nor shall any work be commenced without written authorization by City Engineering. All Construction and Materials shall comply with the City or Wichita Specifications and Standards and Special Provision (on file and available in the City Engineer's Office) or on the City's Website.

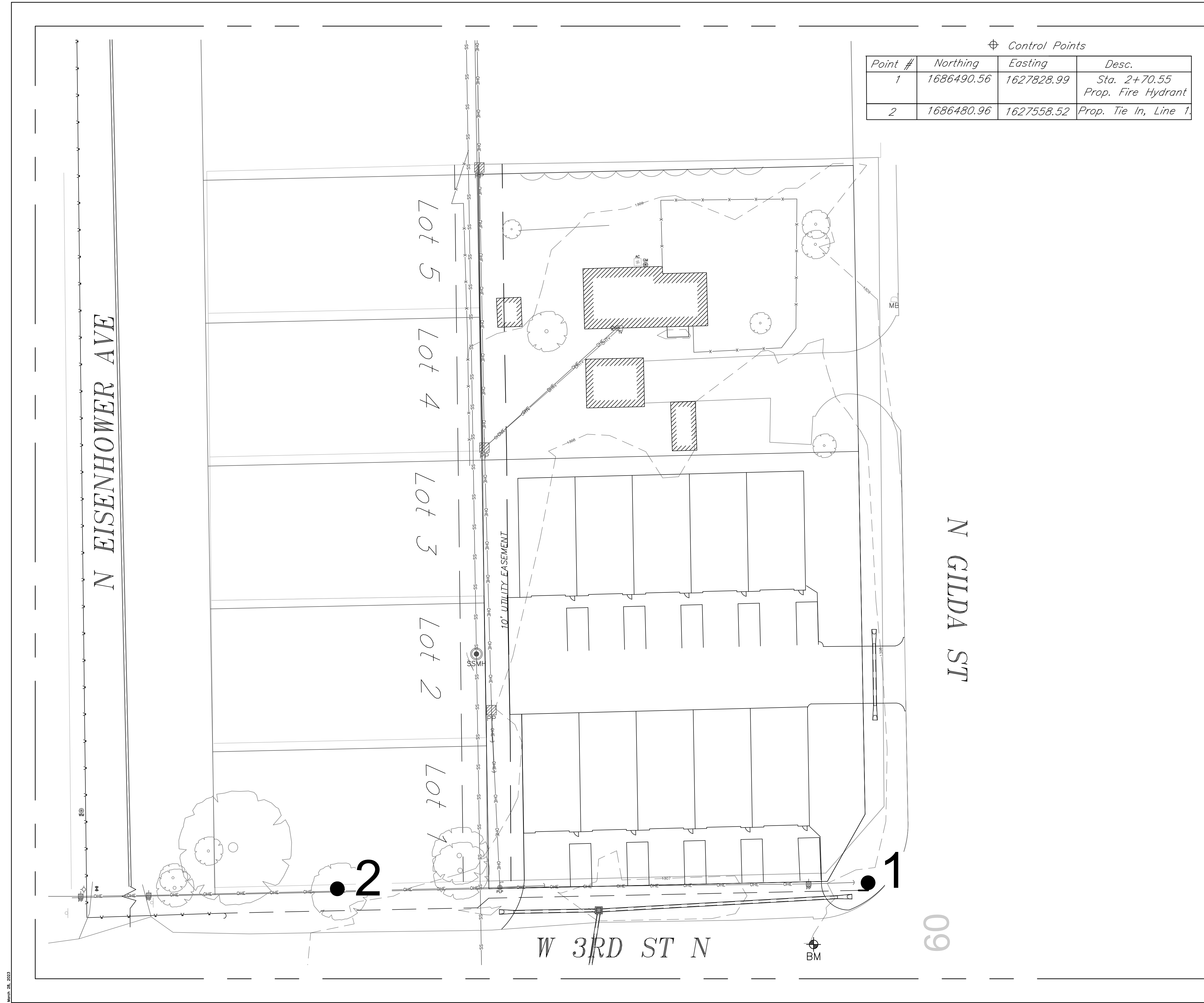
Private Property:
Installation and testing for the fire protection line is to be performed by a City of Wichita licensed fire protection contractor in accordance with the fire codes as adopted by the City of Wichita. All material and construction practices for the fire protection line shall comply with the fire codes as adopted by the City of Wichita (available from the City of Wichita Fire Department). The Contractor shall not commence work without notification and approval of the Wichita Fire Department. Inspection of the fire protection line is to be provided by a licensed Engineering Firm under contract with the Owner/Developer and the Fire Department. The contractor shall not start work until the project inspector is assigned to the project and present on the site. Any work done without inspection will be required to be uncovered for inspection.

An approved copy of these plans signed by City staff are required on-site.

KEMILLER

ENGINEERING PA

117 E. Lewis, Wichita, KS 67202 (316)264-0242



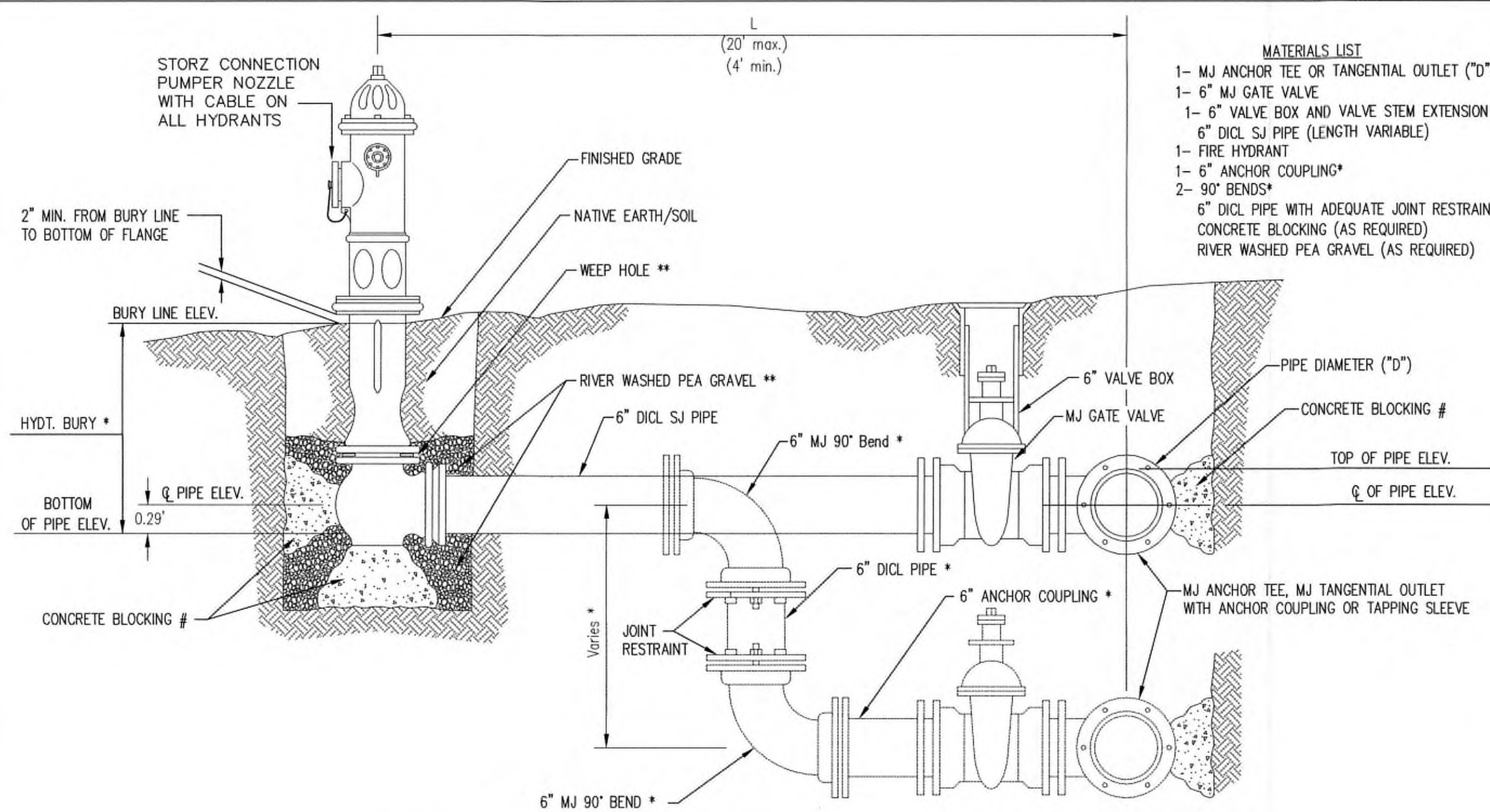
THIS SHEET HAS BEEN
SIGNED, SEALED AND
DATED DIGITALLY



HORIZONTAL SCALE
(IN FEET)
1 inch = 40 ft.

5800 W 3rd St.
Control Map/Plan Sheet
Wichita, Kansas

 117 E. Lewis, Wichita, KS 67202 (316)264-0242	PROJECT NUMBER			SHEET 2.0
	KEM NO. 21092	FILE	DATE 1/2023	
DESIGN KM	DRAWN KJ	REVISED		



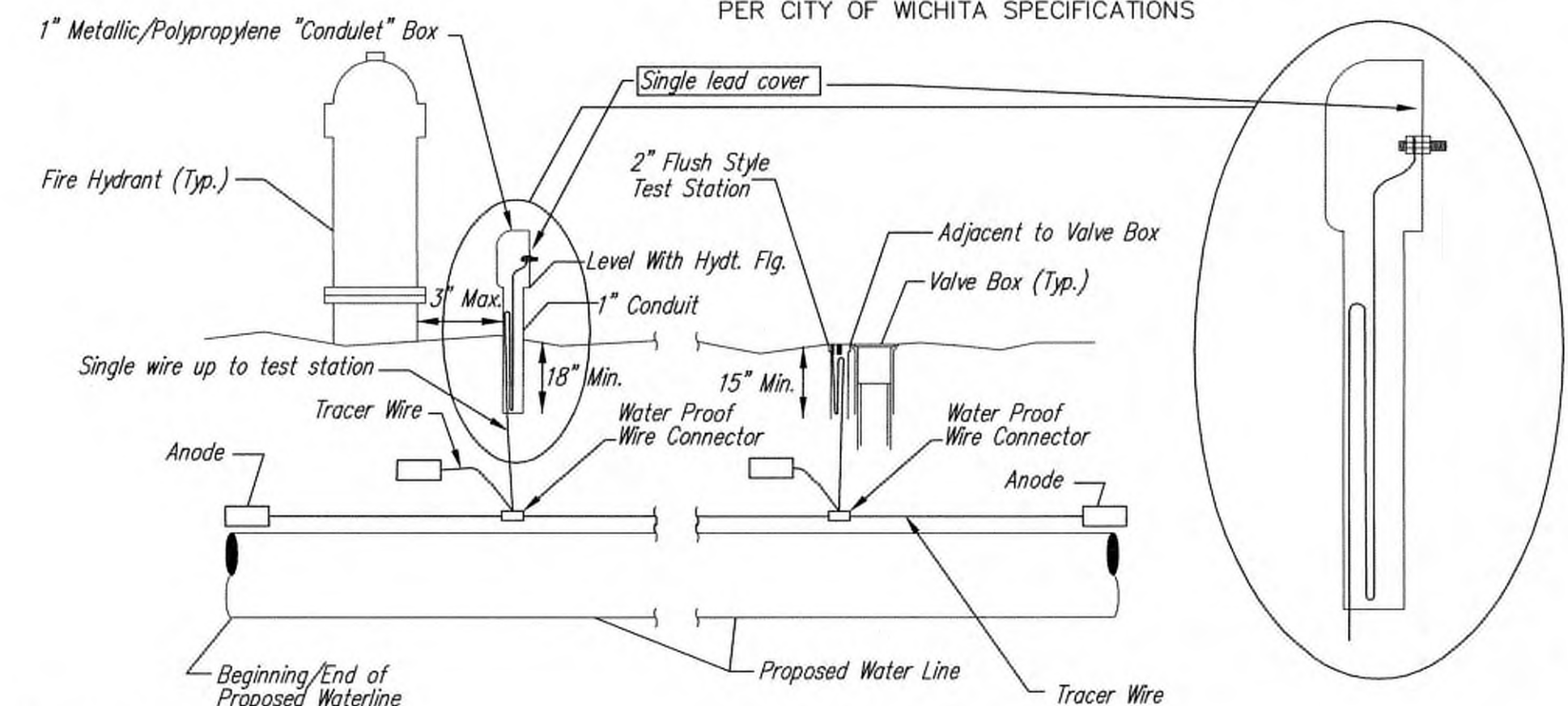
- MATERIALS LIST**
- 1- MJ ANCHOR TEE OR TANGENTIAL OUTLET ("D"x 6")
 - 1- 6" MJ GATE VALVE
 - 1- 6" VALVE BOX AND VALVE STEM EXTENSION IF REQUIRED *
 - 6" DICL SJ PIPE (LENGTH VARIABLE)
 - 1- FIRE HYDRANT
 - 1- 6" ANCHOR COUPLING*
 - 2- 90° BENDS*
 - 6" DICL PIPE WITH ADEQUATE JOINT RESTRAINT *
 - CONCRETE BLOCKING (AS REQUIRED)
 - RIVER WASHED PEA GRAVEL (AS REQUIRED)

* IF THE REQUIRED HYDRANT BURY IS IN EXCESS OF 5', BUT LESS THAN 7', CONTRACTOR SHALL USE STANDARD 5' HYDRANT BURY AND HYDRANT BARREL EXTENSIONS AS NECESSARY. IF THE REQUIRED HYDRANT BURY IS GREATER THAN 7', CONTRACTOR SHALL USE 5' HYDRANT BURY, 2-MJ 90° BENDS, 6" ANCHOR COUPLING AND 6" DICL PIPE AS NECESSARY FOR VERTICAL ADJUSTMENT. THE CONTRACTOR SHALL PROVIDE ADEQUATE THRUST BLOCKING AT HYDRANT AND MEGALUGS, OR SIMILAR RESTRAINT BETWEEN 90° BENDS TO SECURE ALL FITTINGS DURING TESTING AND OPERATION. THE CONTRACTOR SHALL PROVIDE A VALVE STEM EXTENSION PER DETAIL THIS SHEET.

** CAUTION: WEEP HOLES TO BE KEPT CLEAR DURING CONSTRUCTION AND BACKFILL. CONCRETE FOR THRUST BLOCKING SHALL NOT OBSTRUCT WEEP HOLES. PLACE 1 CUBIC FOOT OF RIVER WASHED PEA GRAVEL AROUND EACH WEEP HOLE.

CONCRETE THRUST BLOCKING SHALL BE KEPT CLEAR OF BOLTS, NUTS, AND MJ ACCESSORIES.

FIRE HYDRANT ASSEMBLY
PER CITY OF WICHITA SPECIFICATIONS



TRACER WIRE
Conductive type pipe locator/tracer wire shall be installed to locate all waterline pipe regardless of pipe material. The wire shall extend the entire length of the proposed pipe. The wire shall be taped to the waterline and pulled with the pipe. A waterproof connector shall be used at splice locations. A complete list of approved tracer wire and waterproof connectors can be found on the City of Wichita's website at www.wichita.gov.

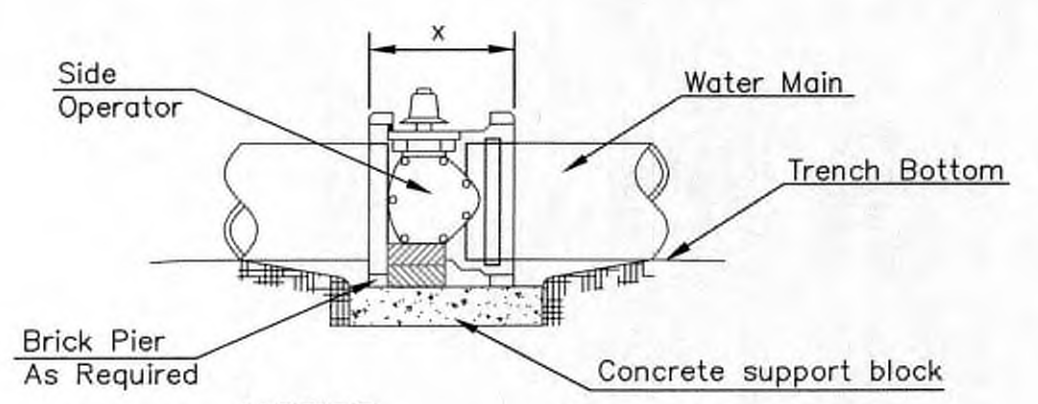
WIRE
The tracer wire shall be Blue No. 12 AWG CCS with 45 mil HDPE insulation. To allow for grade adjustment, a minimum of 12" of excess wire shall be coiled at the bottom of the test station for all wires. Wire connectors shall be installed per manufacturer recommendations. Contractor shall attach wire being installed with proposed water main to any tracer wire installed with adjacent waterline projects.

TEST STATIONS
The test station for fire hydrant application shall be a 1" "condulet" style station as manufactured by AGRA Industries with a removable solid cover having a single lead extending from the face or approved equal. The "conduit" style test station shall be attached to a 1" rigid galvanized conduit with a minimum length of 36" and plastic end bushing. The flush style shall have the word "WATER" stamped or molded into the lid. The test station for valve applications shall be a 2" flush style test station with wire connector on lid. Model # T2PH/B1LP Handley Industries or CD14*TP SnakePit as manufactured by Copperhead Industries or approved equal. The flush style shall have the word "WATER" stamped or molded into the lid. All test stations shall be manufactured using molded blue tops or sufficiently coated with blue enamel paint. The tracer wire and the anode wire shall be installed to allow 12" of wire within the test station. The location of all test stations shall be recorded, and shown in the as-built drawings. Flush style test stations shall not be installed in pavement or sidewalk unless approved by the Engineer. Contractor shall extend tracer wire & move flush mount test station to nearest location out of pavement or sidewalk.

ANODES
The anodes shall be 3 lb. bare zinc or magnesium. The anodes shall be buried at the same elevation as the waterline at each test station. The anodes shall be connected to 12 AWG CCS which shall be extended to the test station.

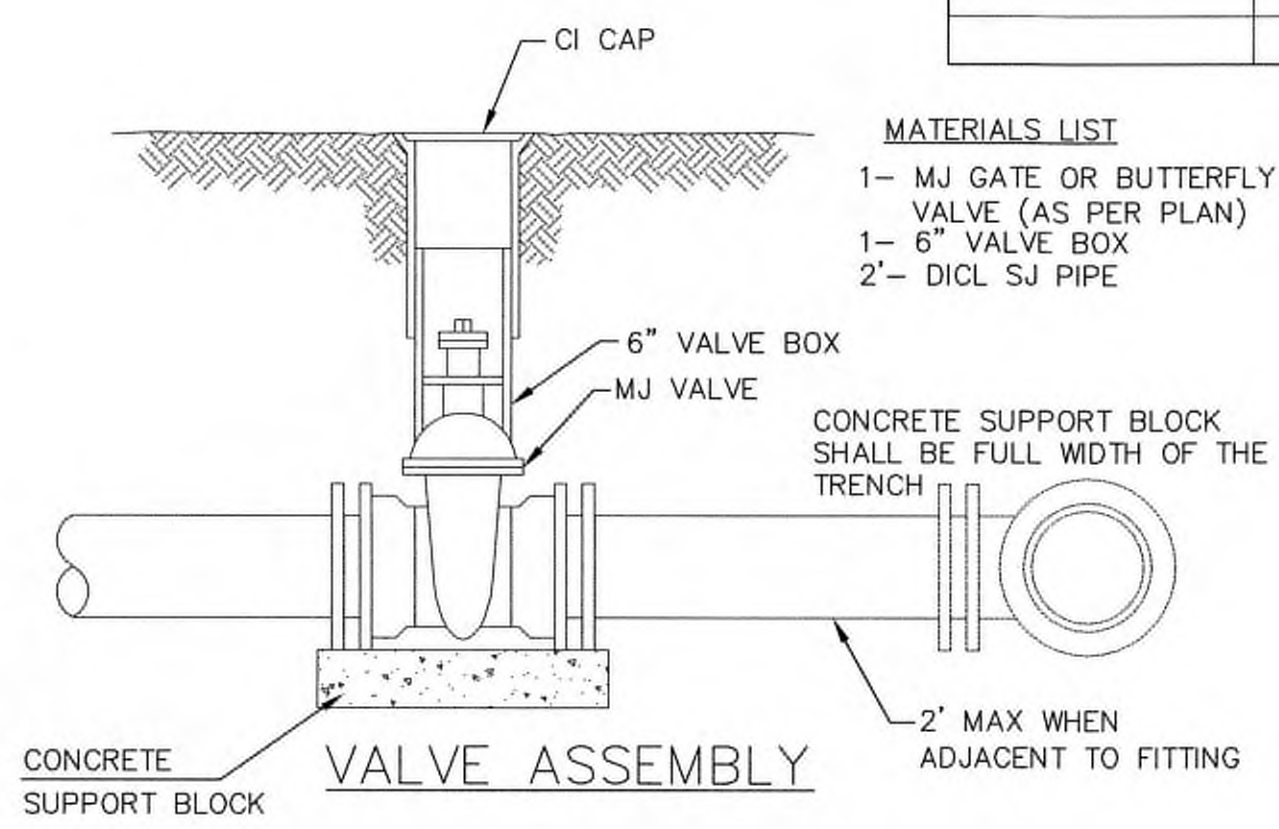
TRACER WIRE DETAIL
COST IS SUBSIDIARY TO PIPE INSTALLATION

FIRE HYDRANTS REQUIRED				
STATION	BURY LINE ELEVATION	TOP OF PIPE ELEVATION	FIRE HYDRANT BURY REQUIRED*	VALVE STEM EXT. REQUIRED (ft)*
Sta. 2+77.10 Line 1	1308.43	1304.01	5.0	N/A

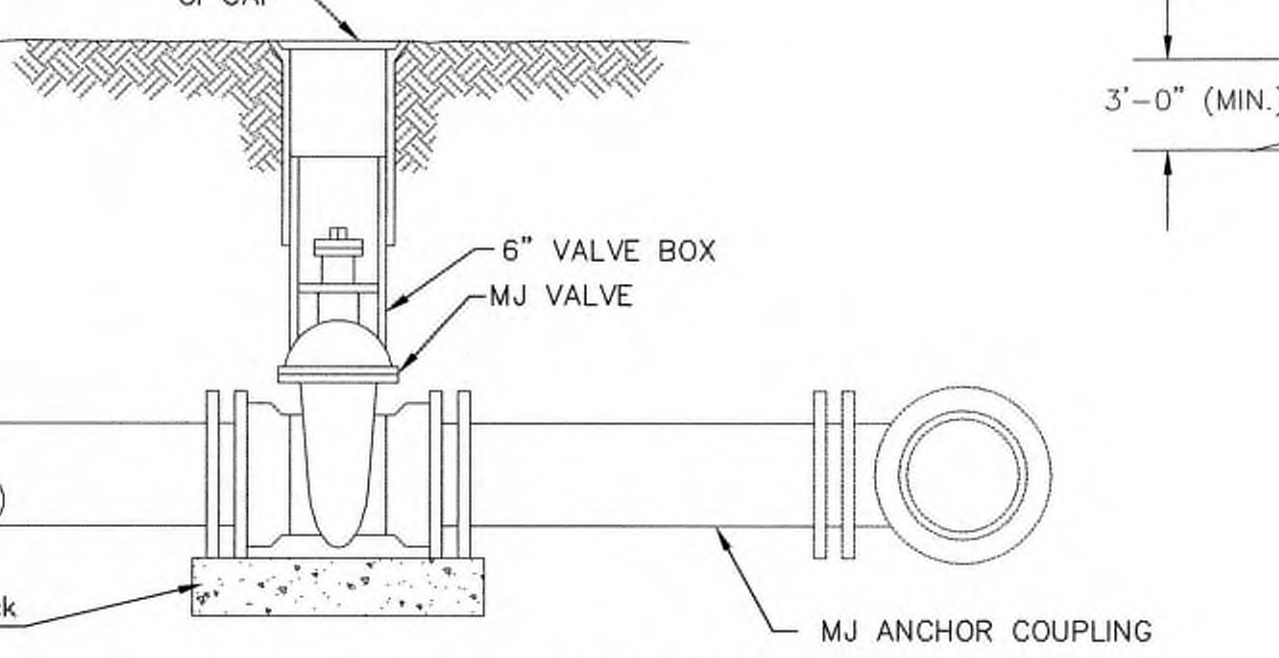


- NOTES**
- This detail covers Butterfly Valve installation, inclusive, regardless of type of pipe or joint used. 24" and larger lines to be detailed on plans.
 - 6" Valve Box and Cover required per City of Wichita Std. Specifications.
 - Conc. Support Block to be full width of trench.

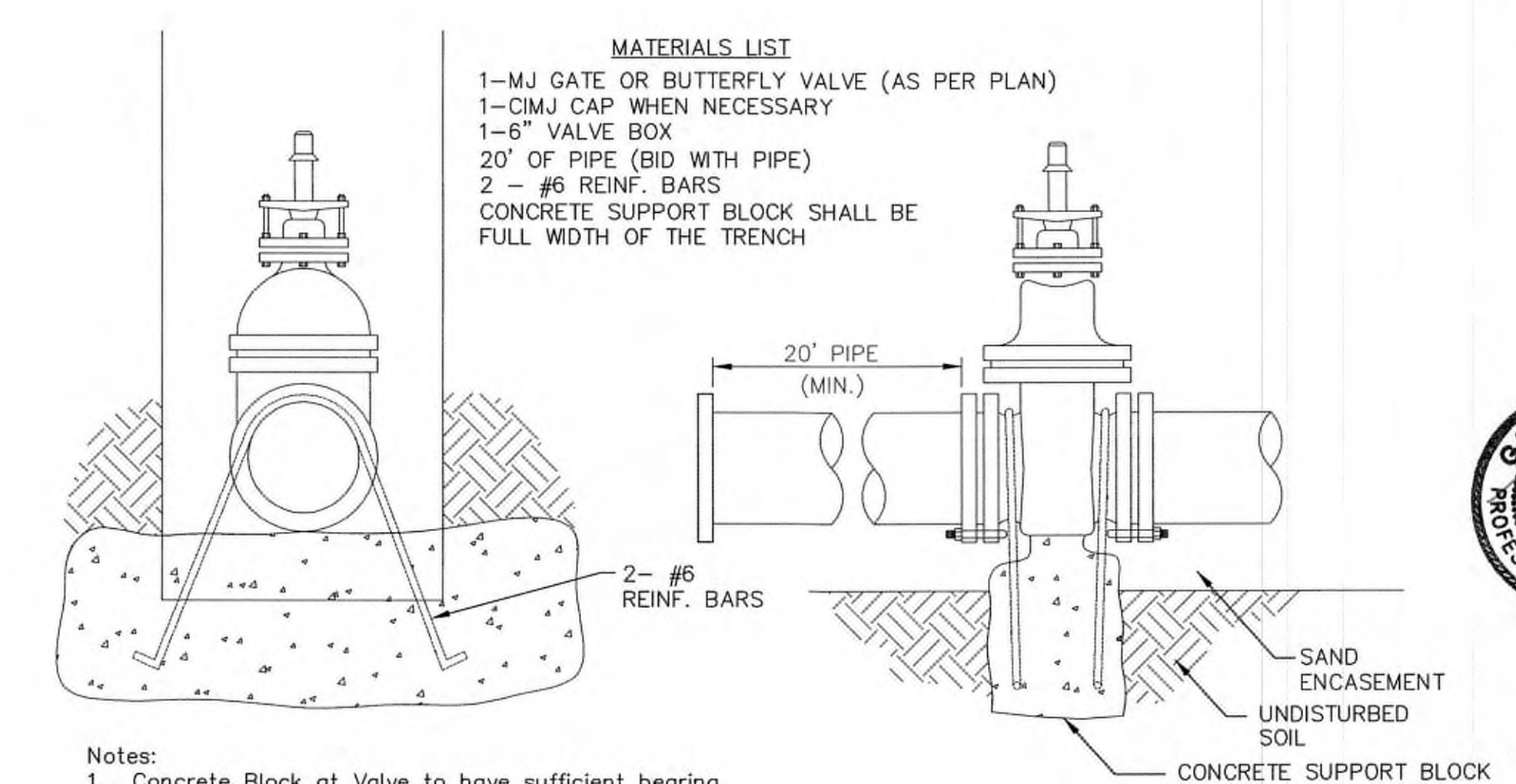
CONCRETE SUPPORT BLOCKING FOR BUTTERFLY VALVE INSTALLATION



- MATERIALS LIST**
- 1- MJ GATE OR BUTTERFLY VALVE (AS PER PLAN)
 - 1- MJ ANCHOR COUPLING (12" OR SMALLER)
 - 1- 6" VALVE BOX
 - CONCRETE SUPPORT BLOCK SHALL BE FULL WIDTH OF THE TRENCH



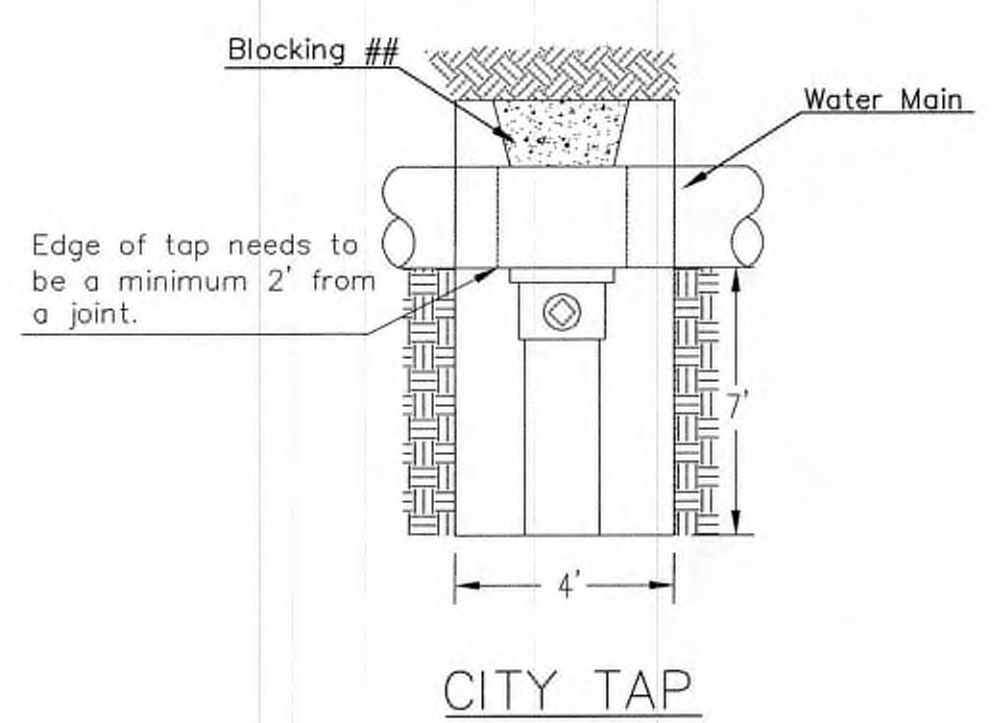
ANCHORED VALVE ASSEMBLY



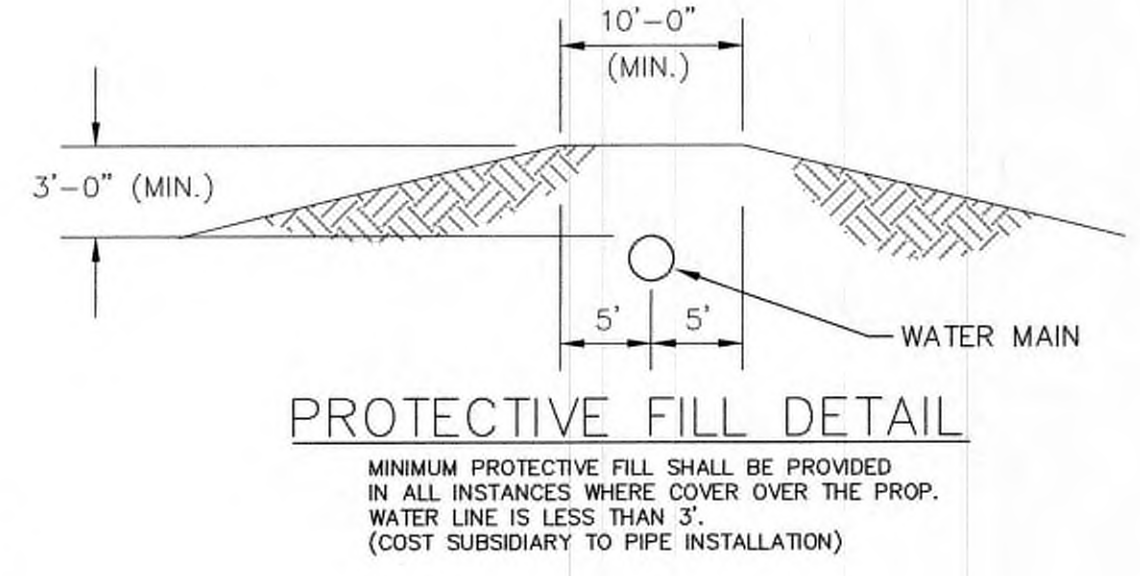
- Notes:**
- Concrete Block at Valve to have sufficient bearing in undisturbed soil to prevent thrust movement as shown in table at right. Field Engineer to determine thrust loading of undisturbed soil and final size of thrust block.
 - The thrust block shall be constructed such that bolts, nuts, and other MJ accessories are kept clear of concrete.
 - All valves at dead ends and at other locations as called out on the plans shall be blocked as shown here.

VALVE	THRUST AT 150 #/sq2
4"	1809 lbs.
6"	4245 lbs.
8"	7540 lbs.
12"	16965 lbs.

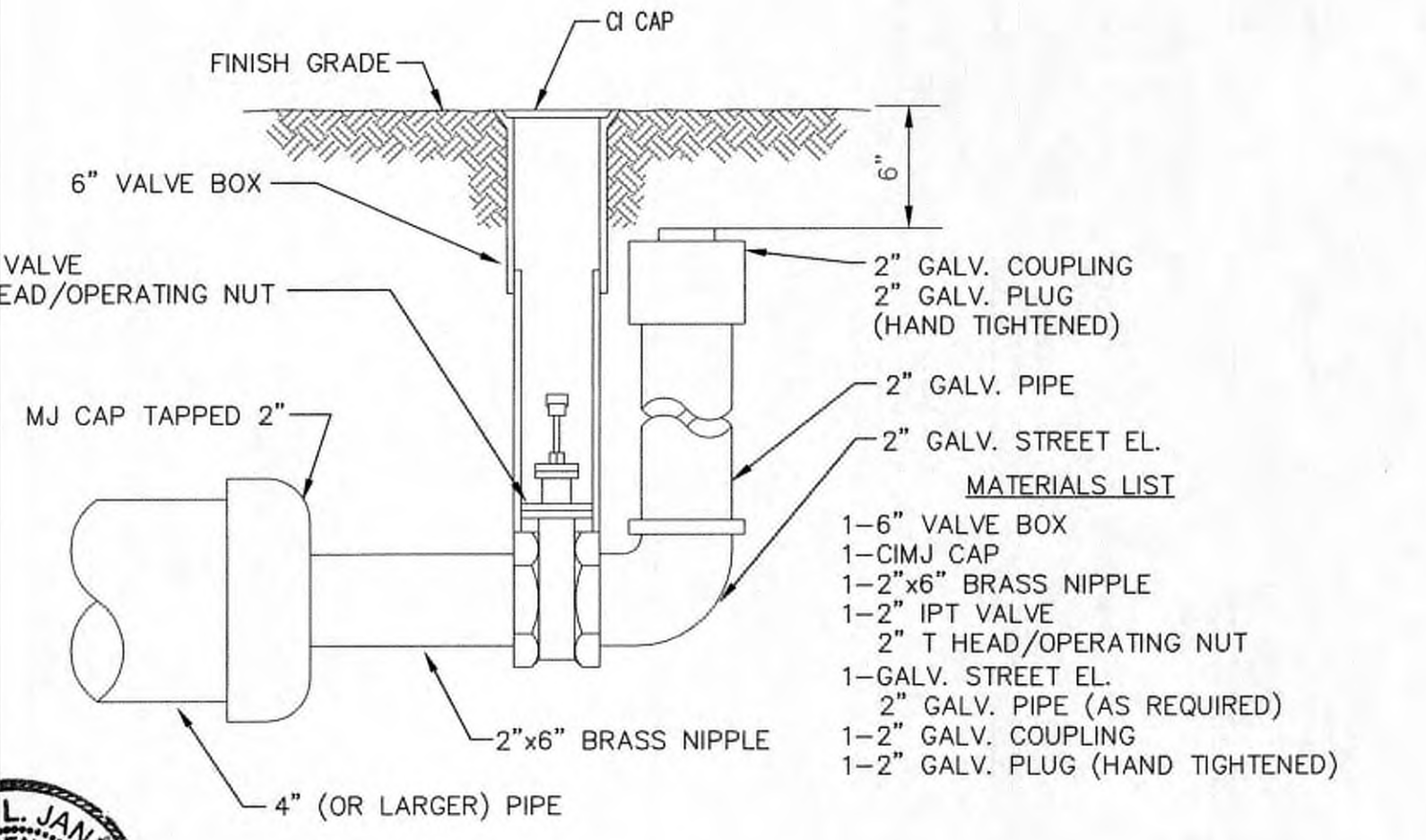
ANCHORED VALVE ASSEMBLY, SPECIAL



When the City of Wichita makes tap, blocking is to be done by Contractor



MINIMUM PROTECTIVE FILL SHALL BE PROVIDED IN ALL INSTANCES WHERE COVER OVER THE PROP. WATER LINE IS LESS THAN 3". (COST SUBSIDIARY TO PIPE INSTALLATION)



- MATERIALS LIST**
- 1- 6" VALVE BOX
 - 1- CIMJ CAP
 - 1- 2"x6" BRASS NIPPLE
 - 1- 2" IPT VALVE
 - 2" T HEAD/OPERATING NUT
 - 1- GALV. STREET EL.
 - 2" GALV. PIPE (AS REQUIRED)
 - 1- 2" GALV. COUPLING
 - 1- 2" GALV. PLUG (HAND TIGHTENED)

2" BLOWOFF ASSEMBLY



CITY OF WICHITA
PUBLIC WORKS & UTILITIES ENGINEERING DIVISION

REVISED: OCTOBER 2016

STANDARD WATER ASSEMBLY DETAIL

CITY ENGINEER
GARY JANZEN, P.E.

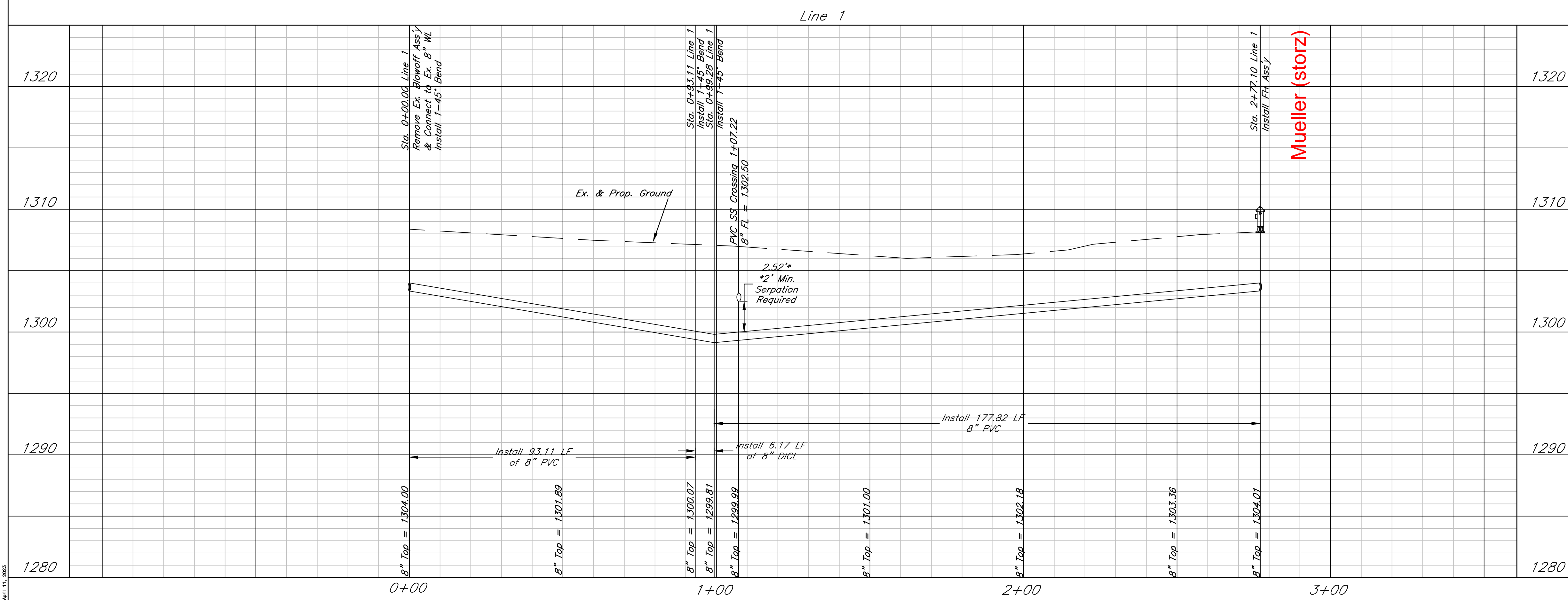
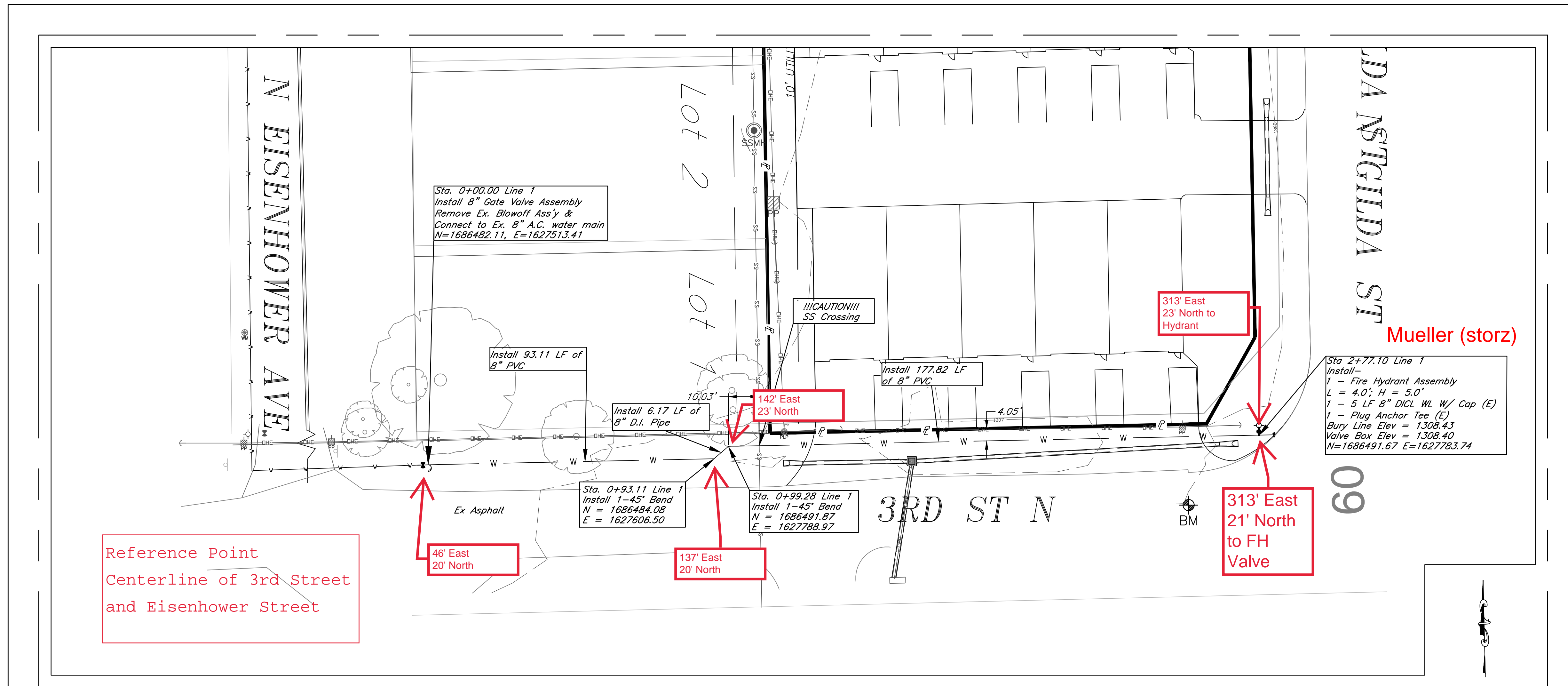
PROJECT NUMBER	OCA NUMBER	DATE

CITY ENGINEER'S OFFICE
CITY HALL - SEVENTH FLOOR
455 NORTH MAIN STREET
WICHITA, KANSAS 67202-1620
(316) 268-4501

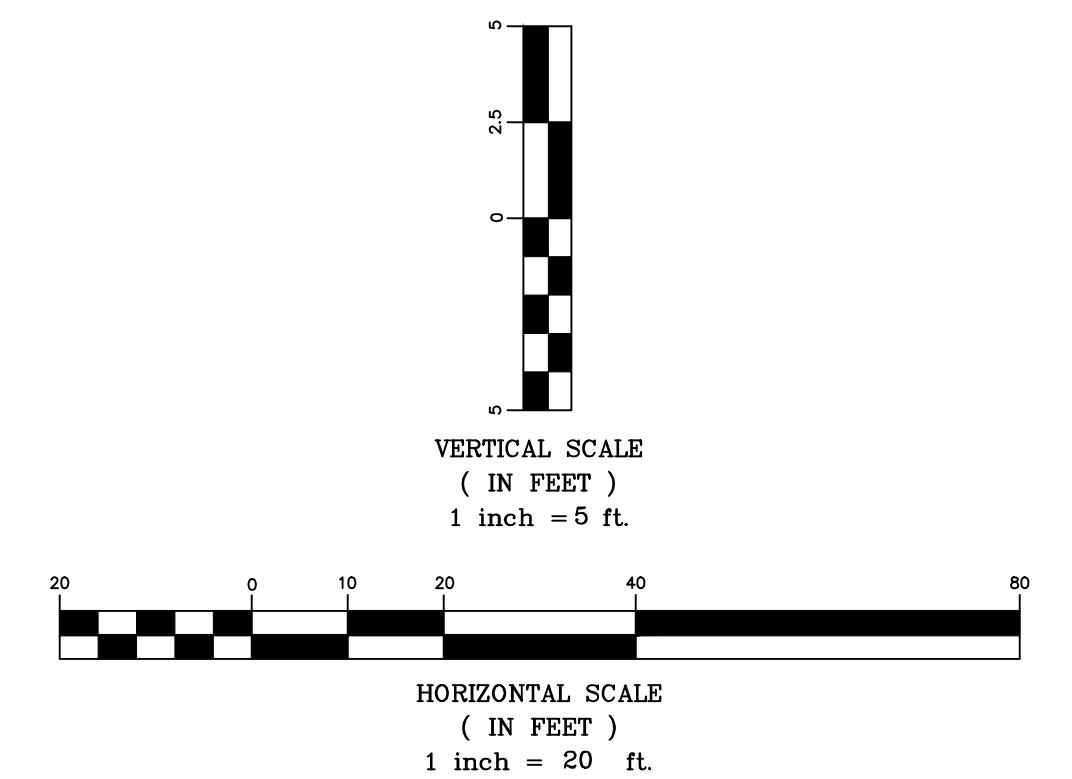
SHEET
2.1

AS BUILTS

KEMILLER ENGINEERING PA
 117 E. Lewis,
 Wichita, KS 67202 (316)264-0242



THIS SHEET HAS BEEN SIGNED, SEALED AND DATED DIGITALLY



Cayetana Add.
Plan & Profile Line 1
 Wichita, Kansas

	PROJECT NUMBER PPW - 2023 - 007407			SHEET 3.0
	KEM NO. 21092	FILE	DATE 1/2023	
DESIGN KM	DRAWN PG	REVISED 04/2023		



THIS SHEET HAS BEEN
SIGNED, SEALED AND
DATED DIGITALLY

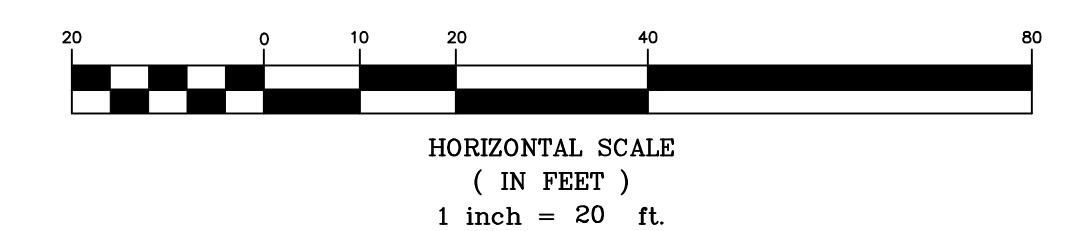
General Notes:

1. The BMP's shown on this sheet are considered minimum standards. Whenever sediment enters the streets, storm sewers, ditches, or ponds, contractor will install additional BMP's, as needed, to correct the problem.
2. The soil erosion BMP's shown hereon must be in place at all times during construction until such time as the site is re-established with paving or grass.
3. Back of curb protection can include hay bale, silt fence, Curlex barrier, or approved alternate as shown on BMP standard details. This BMP must remain in place until the area between the curb and right-of-way line has been permanently stabilized.
4. The General Contractor is responsible for the installation and maintenance per the prevention maintenance plan.
5. Concrete trucks will be permitted to wash out only at approved locations, then maintain and clean up as conditions require, by contractor. No hazardous materials are expected to be encountered. Any spills (diesel, fuel, oil, etc.) will be cleaned up and removed immediately. Portable toilets will be supplied and maintained at various sites along the project. Disposal of sewage will be handled by a contracting firm specializing in this activity.
6. The above mentioned storm water prevention methods will be monitored daily and maintained as required. A weekly erosion control log will be posted in the job trailer onsite, and updated weekly. Site inspections are required within 24 hours after a precipitation event of 0.5" or greater.
7. Stabilize disturbed areas within 14 days after soil disruption activities cease. Stabilize with mulch or similarly effective BMP's, in addition to seeding.

LEGEND:

- Flow Direction
- Inlet Protection - to be provided at all inlets subject to silt laden runoff.
- Ditch Check
- Temporary Seeding and Matting.
- Silt Fence or Hay Bale Barrier - to be installed along property lines where runoff from construction site can run onto other properties.
- Stabilized Construction Entrance - to be used at all locations where vehicles or equipment enter or exit property.
- Back of Curb Protection - to be installed whenever curb is backfilled to less than 3 inches from top and disturbed earth exists adjacent thereto. (See City Standard Details.)

Legal Description:
Lot 2 Block 1 Cayetana Addition



Cayetana Add.
Erosion Control Plan
Wichita, Kansas

 117 E. Lewis, Wichita, KS 67202 (316)284-0242	PROJECT NUMBER			SHEET 4.0
	KEM NO. 21092	FILE	DATE 1/2023	
DESIGN KM	DRAWN KJ	REVISED		



March 28, 2023

Cayetana Addition Wichita, Sedgwick County, Kansas

Part of the NE ¼, Section 22, Township 27 South, Range 1 West

MORTGAGE HOLDERS CERTIFICATE

We the undersigned, holders of a mortgage on the above described property, do hereby consent to this plat of "Cayetana Addition", Wichita, Sedgwick County, Kansas.

By: _____ Date _____
Signer for The Stock Exchange Bank

State of Kansas)
County of Sedgwick) SS

This instrument was acknowledged before me on this _____ day of _____, 2021, by _____

Notary Public

My Commission Expires: _____

State of Kansas)
County of Sedgwick) SS

I, Keith A. Severns, a licensed land surveyor of the State of Kansas, do hereby certify that the following described tract of land was surveyed on this 5th day of January, 2022 and the accompanying one-step final plat prepared and that all the monuments shown herein actually exist and their positions are correctly shown to the best of my knowledge and belief:

LEGAL DESCRIPTION

A tract of land in the Northeast Quarter of Section 22, Township 27 South, Range 1 West of the 6th P.M., Sedgwick County, Kansas, described as beginning 630 feet South and 621 feet West of the Northeast corner of the South half of said Northeast Quarter; thence North 300 feet; thence West 145 feet; thence South 300 feet; thence East 145 feet to the place of beginning. Together with the West half acre of a tract beginning 40 feet West and 330 feet South of the Northeast corner of the South half of the Northeast Quarter of said Section 22; thence South 300 feet; thence West 581 feet; thence North 300 feet; thence East to beginning; Except that part condemned in Case No. 77195; Except that part deeded to The Secretary of Transportation of the State of Kansas for Highway filed as Doc#/Fm-Pg: 29463571.


All easements and rights-of-way within said tract are hereby vacated by virtue of KSA 12-512b as amended.

Keith A. Severns, PS #1355

LEGEND

Boundary Symbols

- (M) = Measured
- = Set KEMPA R4 (1/2") Rebar
- = Found Iron Pipe (3/4")
- ⦿ = Found R5 (5/8") KDOT Disc
- ⊗ = Found R4 (1/2") Rebar - Baughman
- ⊗ = Found R4 (1/2") cap Rebar - Unknown
- ⊘ = Found Iron Pipe (1/2")

Benchmark  BM

Found Magnail in pavement approximately South 26.57 feet and East 2.88 feet from Southeast property corner.

Elevation = 1308.04' NAVD 88

State of Kansas)
County of Sedgwick) SS

Know all men by these presents, that we, the undersigned, have caused the land described in the surveyor's certificate to be platted into two Lots and a Block to be known as Cayetana Addition, Wichita, Sedgwick County, Kansas. Any street dedications shown are dedicated to and for the use of the public. The drainage and utility easements are hereby granted to the public as indicated by the drainage purposes and for the construction and maintenance of all public utilities. A drainage plan has been developed for the plat and that all drainage easements, rights-of-way, and reserves shall remain at established grades or as modified with the approval of the applicable City or County Engineer, and unobstructed to allow for the conveyance of stormwater in accordance with the Stormwater Manual. No sign, light poles, private drainage systems, berms, walls, masonry trash enclosures or other structures shall be located within public utility easements unless permitted by the City of Wichita Department of Engineering and that they do not inhibit the conveyance of surface drainage. The property is within a zone identified by the City Engineer's office as likely to have groundwater at some or all times within ten feet of the ground surface elevation. Building with specially engineered foundations or with the lowest floor opening above groundwater is recommended and owners seeking building permits on this property will be similarly advised. More detailed information on recorded groundwater elevations in the vicinity of this property is available in the City Engineer's Office. And further that the land contained herein is held and shall be conveyed subject to any applicable restrictions, reservations and covenants now on file or hereafter filed in the Office of the Register of Deeds of Sedgwick County, Kansas.

By: _____ Date _____
Jerrone D. Castillo, Manager Titan Realty Inc.

State of Kansas)
County of Sedgwick) SS

This instrument was acknowledged before me on this _____ day of _____, 2022, by Jerrone D. Castillo, Manager, Titan Realty Inc.

Notary Public

My Commission Expires: _____

State of Kansas)
City of Wichita) SS

This plat of the Cayetana Addition, Wichita, Sedgwick County, Kansas, has been submitted to and approved by the Wichita-Sedgwick County Metropolitan Area Planning Commission, Wichita, Kansas. Dated this _____ day of _____, 2022. Wichita-Sedgwick County Metropolitan Area Planning Commission.

William M. Johnson, Chair

Scott A. Wadle, Secretary

State of Kansas)
County of Sedgwick) SS

This plat approved and all dedications shown hereon accepted by the City Council of the City of Wichita, Kansas, this _____ day of _____, 2022.

At the Direction of the City Council.

Brandon Whipple, Mayor

Karen Sublett, City Clerk

Entered on transfer record this _____ day of _____, 2022.

Kelly B. Arnold, County Clerk

State of Kansas)
County of Sedgwick) SS

This is to certify that this plat has been filed for record in the Office of the Register of Deeds this _____ day of _____, 2022, at _____ M; and is duly recorded.

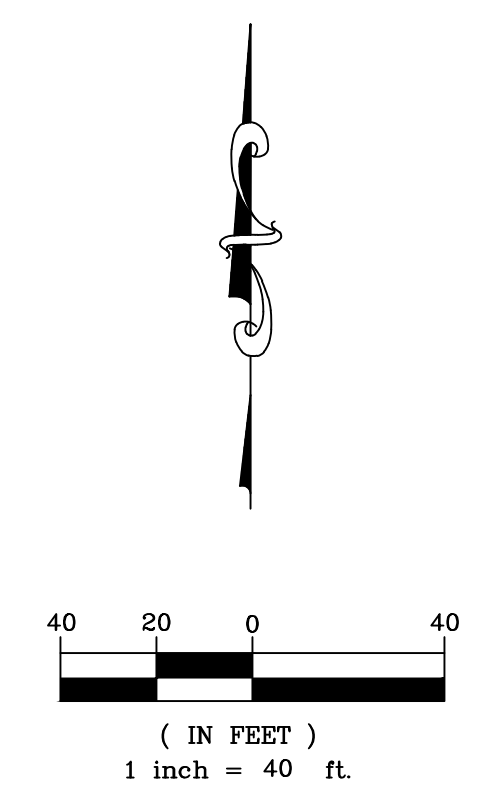
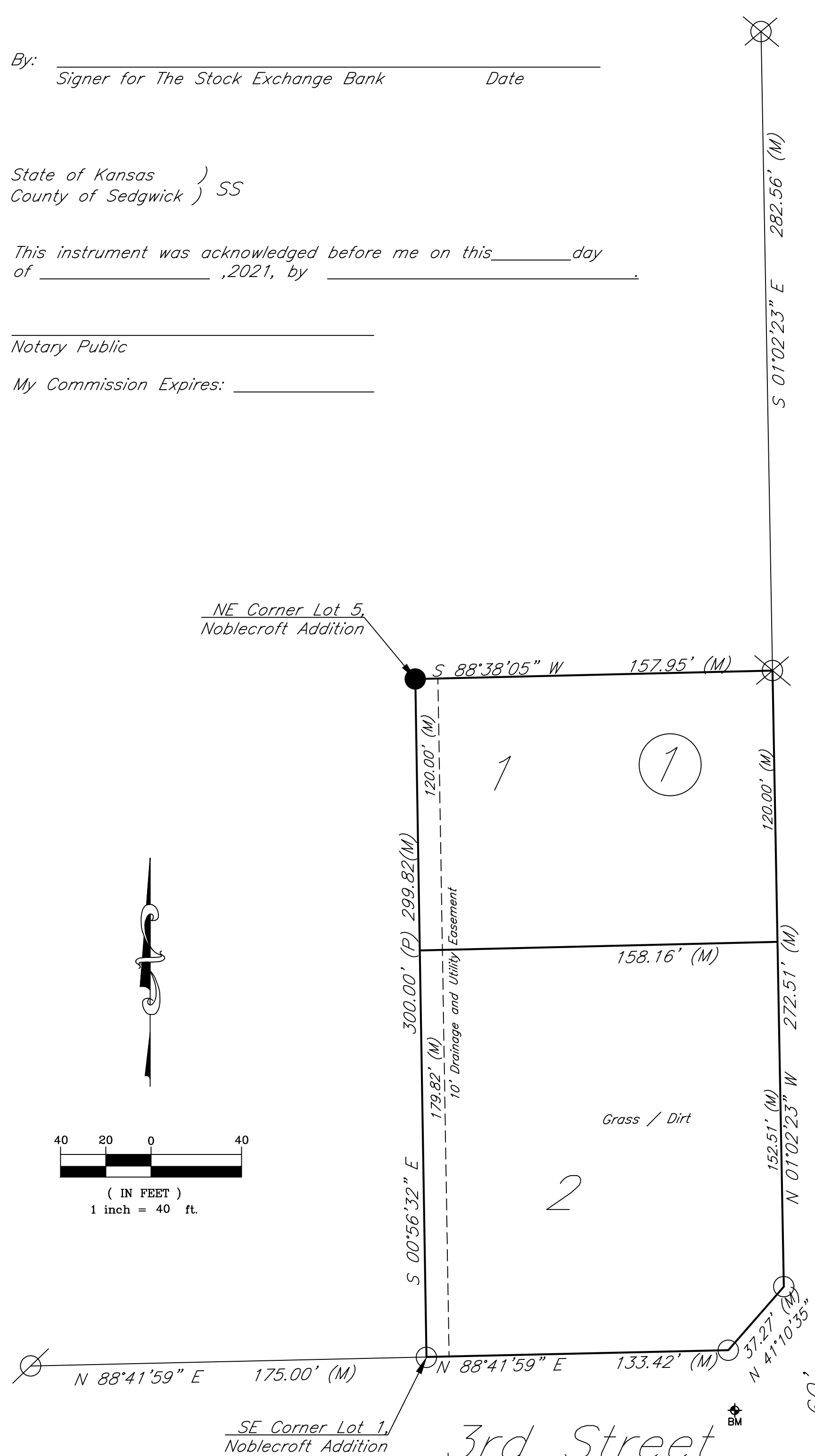
Tonya Buckingham, Register of Deeds

Kenly Zehring, Chief Deputy

COUNTY SURVEYOR'S CERTIFICATE

Reviewed in accordance with K.S.A. 58-2005 on this _____ day of _____, 2022.

Tricia L. Robello, P.S. #1246
Deputy County Surveyor
Sedgwick County, Kansas




Gilda Street

3rd Street

This Addition is subject to a Protective Overlay (#376).

21092 | 5800 W. 3rd Plat Prepared: 10/22/2021



KEMILLER
ENGINEERING PA

117 E. Lewis, Wichita, KS 67202 (316)264-0242