

GENERAL NOTES:

- The Contractor shall comply with all applicable safety regulations. All construction shall be completed following current City Standard Specifications and Special Provisions.
- Maintain a minimum of 10-foot horizontal separation between all water lines (mains, services and fire hydrants) and all sanitary sewer lines (mains services and manholes). All separation distances are to be measured from edge-to-edge at the closest point.
- Maintain a minimum of 2-foot vertical separation between all water lines (mains and services) and all gravity sanitary sewer lines (mains, services, and manholes) at crossings. All separation distances are to be measured from edge-to-edge, at the closest point.
- Maintain a minimum of 2-foot vertical separation between all water lines (mains and services) and all pressurized sanitary sewer lines (force mains and services) at crossings. Waterlines must always be placed above pressurized sanitary sewer lines where they cross. All separation distances are to be measured from edge-to-edge at the closest point.
- Contractor will be required to provide notice to utility companies a minimum of seventy-two (72) hours prior to any excavation, as follows:

Kansas One-Call	687-2470
The Contractor must notify the following in case of an emergency:	
AT&T	1-800-246-8464
Black Hills Energy	1-800-694-9898
City of Wichita Water & Sewer	1-316-219-8921
City of Wichita Stormwater	1-316-268-4090
City of Wichita Traffic	1-316-268-4034
Cox Communications	1-888-249-3530
Kansas Gas Service	1-888-482-4950
Every	1-800-544-4857
- Utility service lines, poles, etc. are to be adjusted as necessary by others prior to construction unless the plans specifically call for their adjustment by the Contractor or unless the plans specifically identify a utility to be adjusted by its owner during construction. Existing utilities and their location, as shown on the plans, represent the best information obtainable for design. The Contractor will be required to work around existing utilities within the right-of-way which do not conflict with proposed construction.
- Rubble from the removal of miscellaneous structures and excess excavation which is to be wasted shall be disposed of on sites to be provided by the Contractor. These sites shall be approved by the Engineer as to suitability, appearance and site location. Locations, in the opinion of the Engineer, that will leave an unsightly appearance will not be approved. All disposal sites must be approved by the Kansas Department of Health and Environment. Material either stockpiled or disposed of in a flood plain will require a Kansas State Board of Agriculture permit. Any material dumped in waters of the United States or wetlands is subject to U.S. Corps. of Engineers permitting regulations. Any material buried or stockpiled beyond approved construction limits will require additional archaeological investigations unless buried in a previously approved borrow location.
- Trees and shrubs in public right-of-way which are in direct conflict with proposed new construction shall be removed by the Contractor with the City Engineer's approval. Trees and shrubs which are not in direct conflict with proposed new construction shall be saved and protected from damage.
- The Contractor shall give all property owners and/or tenants of developed property abutting the construction of this project a minimum of ten (10) days notice prior to start of construction.
- The Contractor shall be responsible for preserving property irons. The Contractor will be required to re-establish any property irons which are damaged or destroyed by his construction operations. Such irons shall be re-established by a licensed land surveyor in accordance with state laws.
- The Engineering Division shall field locate water valves one time during construction when requested by the Contractor. It shall be the Contractor's responsibility to preserve such field locations during the construction process. Water valves, valve boxes or fire hydrants damaged during construction shall be repaired by Contractor at his own expense. Valve boxes and water meters within the project limits shall be adjusted to match final grades by the contractor.
- The Contractor shall notify the inspecting engineer and Dawnita Reinhardt at 316-268-4574 with the City of Wichita with the anticipated construction start date and notify them of project completion. Staking and inspection for this project will be the responsibility of the Contractor.

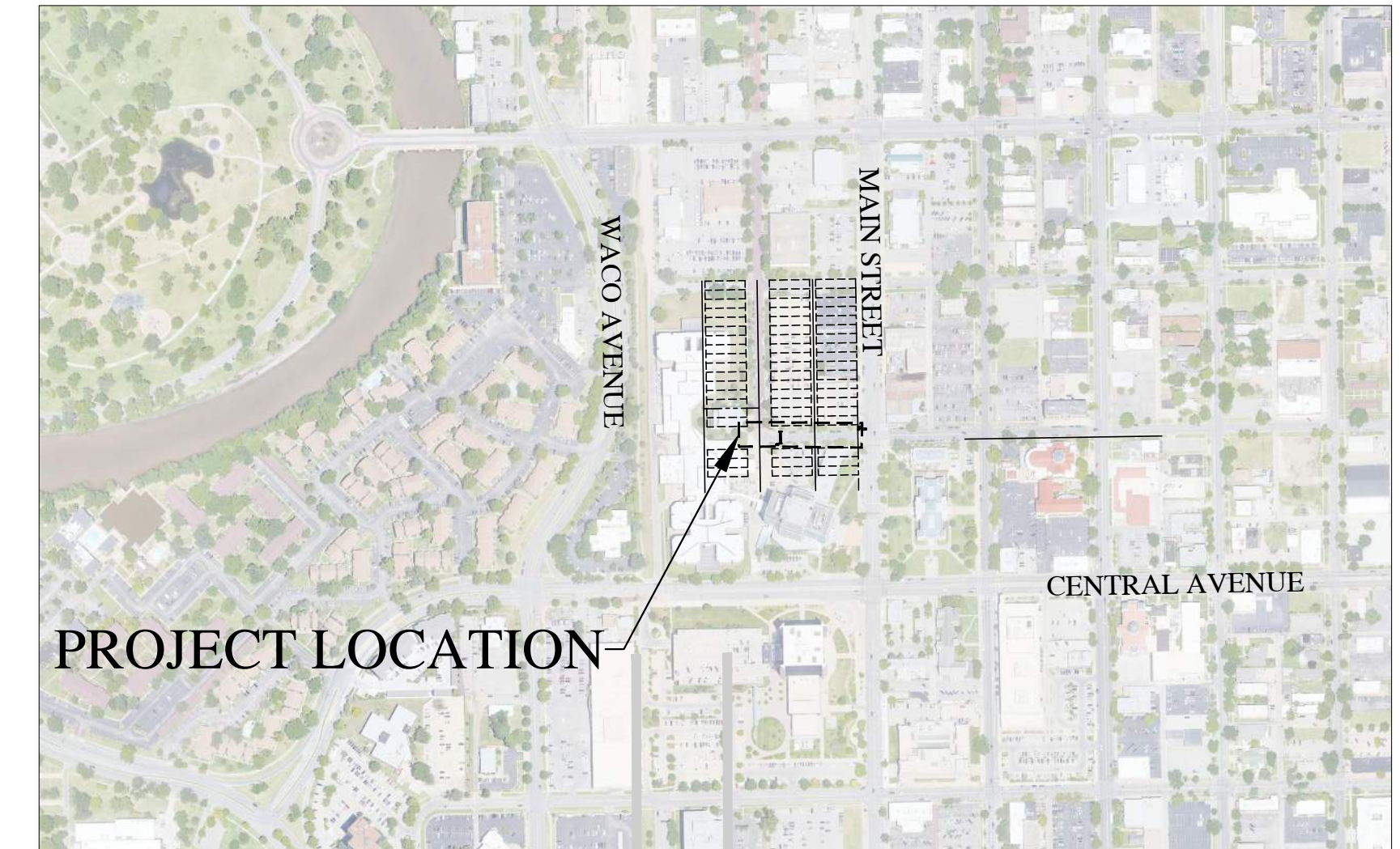
- If traffic will be impacted by construction, a traffic control plan must be submitted and approved by the City Traffic Engineer, Mike Armour at traffic@wichita.gov before construction can begin. The Contractor shall be responsible for all traffic control measures to facilitate construction. All construction zone markings and signage shall conform to the latest version of the Manual on Uniform Traffic Control Devices (MUTCD) as published by the US Dept. of Transportation, Federal Highway Administration. All costs associated with construction markings and signage shall be the Contractors responsibility.
- All elevations shown are NAD 83.
- All areas disturbed during construction that will not be under proposed pavement shall be restored to match existing conditions.
- Any sidewalk, drive approach, curb, or street pavement removed to construct project must have a pavement cut permit and be replaced by the City contractor. Permits can be obtained by calling 316-268-4501 or 316-268-4480.
- All applicable fees (tap, equity, in lieu of & main benefit) must be paid before any connections can be made on this project. Quotes can be obtained on fees by calling 316-268-4555.
- City maintenance of water mains ends at right-of-way or easement line or within two feet of vault.
- Opening and closing of water valves shall be done slowly to prevent damage to the water distribution system from water hammer. All valves closed by the contractor must be reopened as new construction permits. The project inspector must ascertain that any valve closed by the Contractor is reopened. The contractor will be permitted to operate water valves only when the project inspector assigned to the project is present.
- The Contractor shall lay a Tracer Wire and Set Test Stations along all water pipe installed in accordance with City Specifications and Tracer Wire Detail on detail sheet WL-101, cost is subsidiary to pipe installation.
- The contractor shall provide materials for temporary blowoff of waterlines. Connections to the existing waterline(s) shall be made with clean, swabbed pipe and flushed upon completion of tie-ins.
- Requests for short term water interruptions shall be made to the City Water Distribution Division and will be subject to their approval. The Contractor shall give written notice to any property owner, business, and/or tenants that will have water service interrupted at least 5 days in advance. Such notifications should indicate the time and date that the water will be turned off and when the service will be restored. No business, property owner, and/or tenants shall be without water service for more than 8 hours. Proposed tie in locations which will affect water service to property owners shall be preformed during non-peak hours.
- The Contractor must schedule the connections to the existing main with the City such that there is a minimum disruption of service. Connections shall be made during periods of low water usage. The Contractor shall submit his proposed schedule for completing work for City approval at least 10 days prior to beginning construction.
- Deflections at pipe joint or couplings shall not exceed the pipe manufactures recommended maximum. Where deflections are greater than the maximum allowed, the contractor shall utilize fittings.
- Any existing joint exposed during excavation shall be replaced if within four feet of proposed joint.
- Valves 12 inch and larger are to be operated by the City Water Distribution Division, 48 hours of advance notice is required with the water Dispatch at 316-291-8921.
- All wet taps shall be installed by the City of Wichita. The Contractor will reimburse the City for tapping fees prior to tap being made. Unless noted on plans.
- The Contractor shall protect from damage and support existing utilities through construction as approved by the utility owner and the Engineer at the contractors expense.
- Contractor shall limit the extent of trench openings overnight and weekends to less than 50 feet.
- Wichita Fire Department inspections may be scheduled by calling 316-268-4574.

WATER DISTRIBUTION SYSTEM to serve **Sedgwick County Detention Facility**

141 W. Elm Street
CITY OF WICHITA, KANSAS

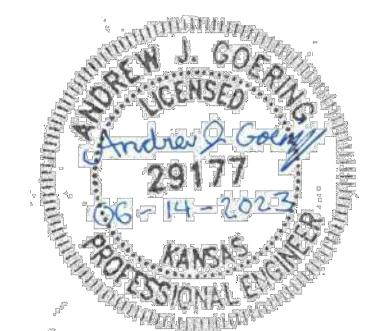
Paul Gunzelman P.E. Interim City Engineer
Project Number
2023-013493 PPW (54030980)

LK Architecture Project No. 22175.03
Sedgwick County Project No. 23-0030



Vicinity Map

AS BUILT PLANS
CONTRACTOR: MIES CONSTRUCTION
SUPERINTENDENT: DALLAS MIES
FOREMAN: MIKE DANDURAND
CLIENT: CITY OF WICHITA
INSPECTOR: ROSS POWERS
INSPECTION FIRM: SCHWAB-EATON, PA.
PDF BY: RJP 04/19/2024



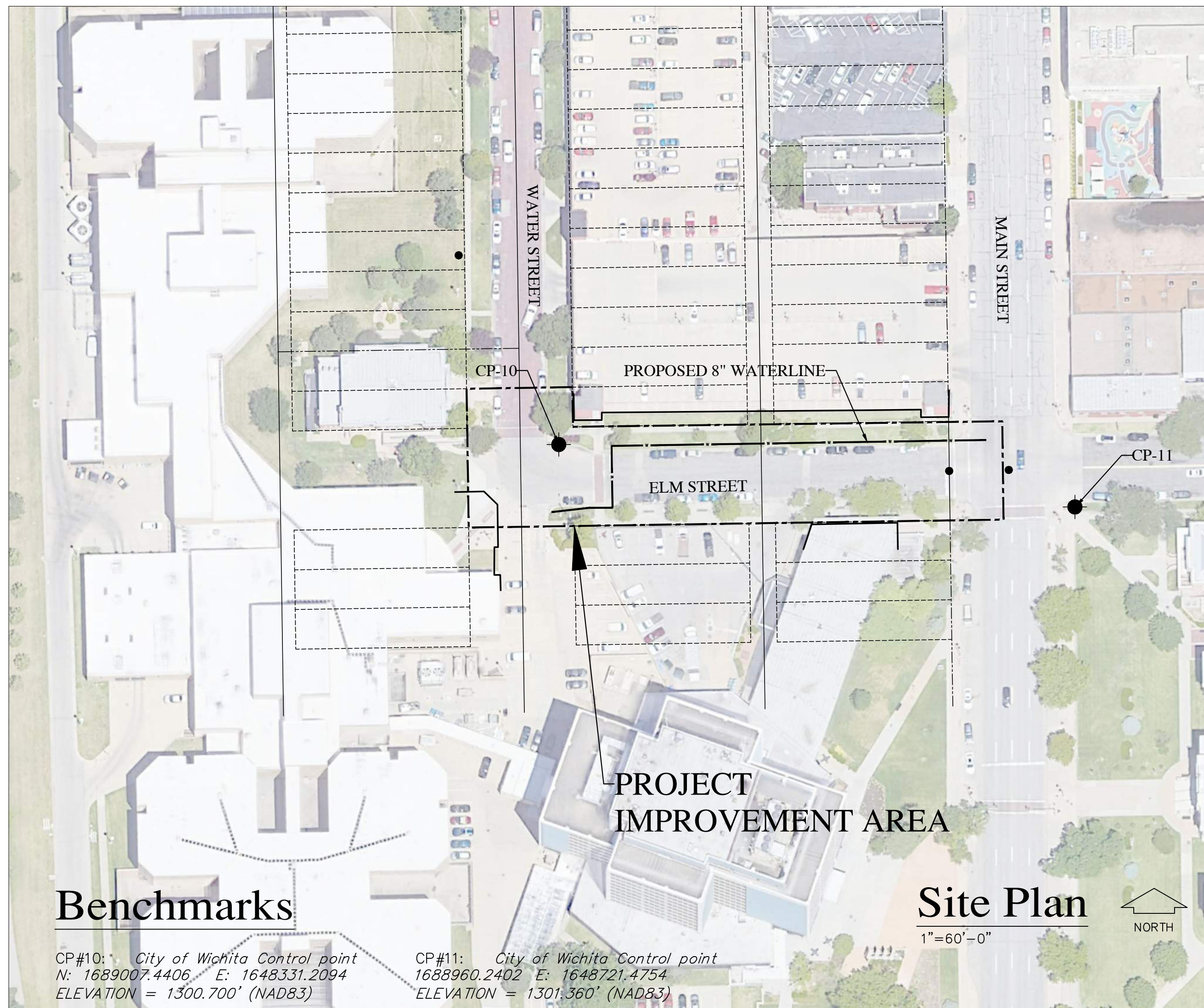
APPROVED AS NOTED
BY WICHITA PUBLIC WORKS
ENGINEERING DIVISION
& BY WICHITA FIRE DEPARTMENT

Engineering approved by Shawn Mellies on June 9, 2023
PW & U approved by Greg Lolley on June 9, 2023
Fire Dept. approved by Jose Ocadiz on June 9, 2023

NOTE TO CONTRACTORS

Inspection and testing for this project is to be provided by a Licensed Consulting Engineering Firm under contract with the Owner/Developer. Said inspection to be in accordance with the City of Wichita standard construction engineering practices and certified by a Professional Engineer Licensed in the state of Kansas. No work shall be performed in dedicated easements or public right-of-way by the Contractor without such inspection nor shall any work be commenced without written authorization by City Engineering. All Construction and Materials shall comply with the current City of Wichita Specifications and Standards and Special Provision (on file and available at Wichita.gov).

An approved copy of these plans signed by City staff are required on-site.



Benchmarks

CP#10: City of Wichita Control point
N: 1689007.4406 E: 1648331.2094
ELEVATION = 1300.700' (NAD83)

CP#11: City of Wichita Control point
N: 1688960.2402 E: 1648721.4754
ELEVATION = 1301.360' (NAD83)

Site Plan

1"=60'-0"



Sheet Index

- Title Sheet and Site Plan
- Specific Notes and Summary of Quantities
- Plan and Profile
- Traffic Control Plan
- Erosion Control Plan
- 6-10. Erosion Control Details
11. Standard Water Assembly Detail (City of Wichita sheet WL101)
12. Miscellaneous Water Details (City of Wichita sheet WL104)

June, 2023

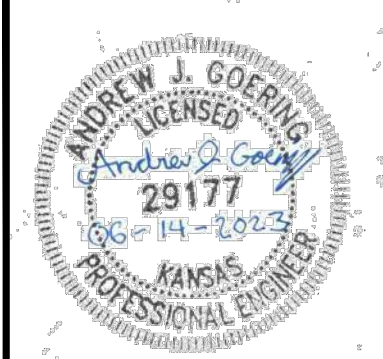


PROJECT SPECIFIC NOTES

- A. ALL EXISTING WATER SYSTEM APPURTENANCE AND OTHER SALVAGEABLE ITEMS SHALL REMAIN THE PROPERTY OF THE OWNER.
- B. ALL PROPERTY LINES SHOWN ARE FOR INFORMATION ONLY.
- C. THE CONTRACTOR SHALL INSTALL THE PROPOSED WATERLINE WITHOUT DISRUPTION OF WATER SERVICE TO CUSTOMERS UNTIL CONNECTIONS ARE READY TO BE MADE.
- D. CONTRACTOR SHALL NOT PLACE EXCAVATION SPOILS ON ANY DRIVING SURFACE WITHOUT PRIOR APPROVAL OF THE ENGINEER AND OWNER. MATERIALS STOCKPILED OR SPOILS PLACED ON A DRIVING SURFACE SHALL BE REMOVED AT THE END OF THE DAY'S CONSTRUCTION AT THE DIRECTION OF THE ENGINEER AND SHALL BE AT THE CONTRACTOR'S SOLE EXPENSE.
- E. THE CONTRACTOR SHALL FINISH GRADE AND RESTORE DISTURBED AREAS IN EACH SECTION OF THE CONSTRUCTION PRIOR TO OR CONCURRENT WITH CONSTRUCTION OF OTHER IMPROVEMENTS. ALL DISTURBED AREAS SHALL BE SEEDED, FERTILIZED AND MULCHED ACCORDING TO SPECIFICATIONS, PRIOR TO THE END OF THE DESIGNATED SEEDING SEASON.
- F. ALL NEWLY CONSTRUCTED WATERMAIN AND SERVICE LINE SHALL BE TESTED AND DISINFECTED AS SPECIFIED AND TRACER WIRE SHALL BE INSTALLED ON ALL UNDERGROUND PIPING, INCLUDING SERVICE LINES.
- G. ALL HYDRANTS AND VALVES LOCATED ON LINES TO BE ABANDONED SHALL BE ABANDONED OR REMOVED PER THE DETAILS. ABANDONMENT OF EXISTING WATERLINES, HYDRANTS, VALVES, ETC. SHALL BE SUBSIDIARY TO CLEARING AND GRUBBING
- H. TRENCH DEPTHS OF GREATER THAN 5' SHALL REQUIRE AN APPROVED PROTECTIVE SYSTEM THAT MEETS OSHA REQUIREMENTS.
- I. NECESSARY FITTINGS TO ESTABLISH WATERMAIN SHALL NOT BE PAID SEPARATELY BUT SHALL BE CONSIDERED SUBSIDIARY TO THE WATERLINE INSTALLED.
- J. THE CONTRACTOR SHALL BE RESPONSIBLE FOR PROVIDING COMPLETE FUNCTION SYSTEMS. SPECIALIZED EQUIPMENT PROVIDED BY THE CONTRACTOR MAY REQUIRE APPURTENANCES THAT ARE NOT SHOWN. ALL EQUIPMENT SHALL BE INSTALLED PER MANUFACTURES RECOMMENDATIONS.
- K. CONCRETE THRUST BLOCKS SHALL BE USED ON ALL BURIED FITTINGS RESTRAINED JOINTS (MEGA-LUGS) USED AT 90 DEG BENDS IN LEIU OF THRUST BLOCKS
- L. IT SHALL BE THE CONTRACTOR'S OPTION TO EMPLOY THE MOST EFFICIENT METHODS OF INSTALLATION. THE CONTRACTOR SHALL HAVE THE OPTION OF BORING UTILITIES UNDER ANY HARD SURFACE SUCH AS DRIVEWAYS WHICH MAY BE NOTED FOR REMOVAL AND REPLACEMENT AT NO ADDITIONAL COST TO THE OWNER.
- M. QUANTITIES FOR THE REMOVE AND REPLACE SURFACING BID ITEMS ARE BASED ON A 5' WIDE REPLACEMENT WIDTH AND PAID FOR BY THE SQUARE YARD. ADDITIONAL PAYMENT WILL NOT BE MADE OUTSIDE THE LIMITS SHOWN ON THE PLANS, UNLESS DIRECTED BY THE ENGINEER. CONTRACTOR SHALL PROVIDE TEMPORARY GRAVEL SURFACING FOR DRIVEWAYS, STREETS AND SIDEWALKS WHEN NOT REPLACED WITHIN 7 DAYS.
- N. ALL WATER MAINS ARE TO BE INSTALLED 42" STANDARD DEPTH OR AS SHOWN ON DRAWINGS EXCEPT TO AVOID EXISTING UTILITIES.
- O. CONNECTIONS TO EXISTING WATERLINES ARE TO BE RESTRAINED. RESTRAINT OF EXISTING AND PROPOSED WATERLINE WILL BE CONSIDERED SUBSIDIARY TO THE PAY ITEM CONNECT TO EXISTING.

SUMMARY OF QUANTITIES

No	Description	Quantity	Units
1	Mobilization		Lump Sum
2	Construction Staking		Lump Sum
3	Clearing and Grubbing		Lump Sum
4	Seeding		Lump Sum
5	Erosion Control		Lump Sum
6	Traffic Control		Lump Sum
7	Connection to Exisiting Waterline	1	Each
8	8" Waterline (In Place)	376	Lin. Ft.
9	8" Gate Valve w/ Box	1	Each
10	Concrete Curb and Gutter	38 20	Lin. Ft.
11	Remove and Replace Surfacing (Asphalt)	31	Sq. Yds.
12	Remove and Replace ADA Concrete Ramp	2 1	Each
13	Flowable Fill	25	Cu. Yds.
14	Tapping Tee Connect to Exisiting (City)	1	Each



ENGINEERING

EC

P.A.
CONSULTANTS

1227 NORTH MAIN STREET
HUTCHINSON, KANSAS 67501
620-665-6394
www.engineering-consultants.com

THIS DRAWING IS THE PROPERTY OF ENGINEERING CONSULTANTS, P.A. AND SHALL NOT BE COPIED OR REPRODUCED WITHOUT WRITTEN AUTHORIZATION FROM ENGINEERING CONSULTANTS, P.A.

ADULT DETENTION FACILITY

WATER SUPPLY

SEDGWICK COUNTY JAIL, 141 W ELM ST, WICHITA, KS 67203

Revision Schedule	No	Description	Date

DATE: 6.14.2023

JOB No: 22-246

DESIGN BY: AJG

DRAWN BY: AJG

CHECK BY: BLE

WATER SUPPLY

SUMMARY OF QUANTITIES

PPW2

OF 12



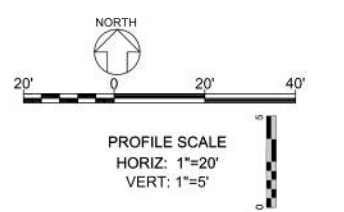
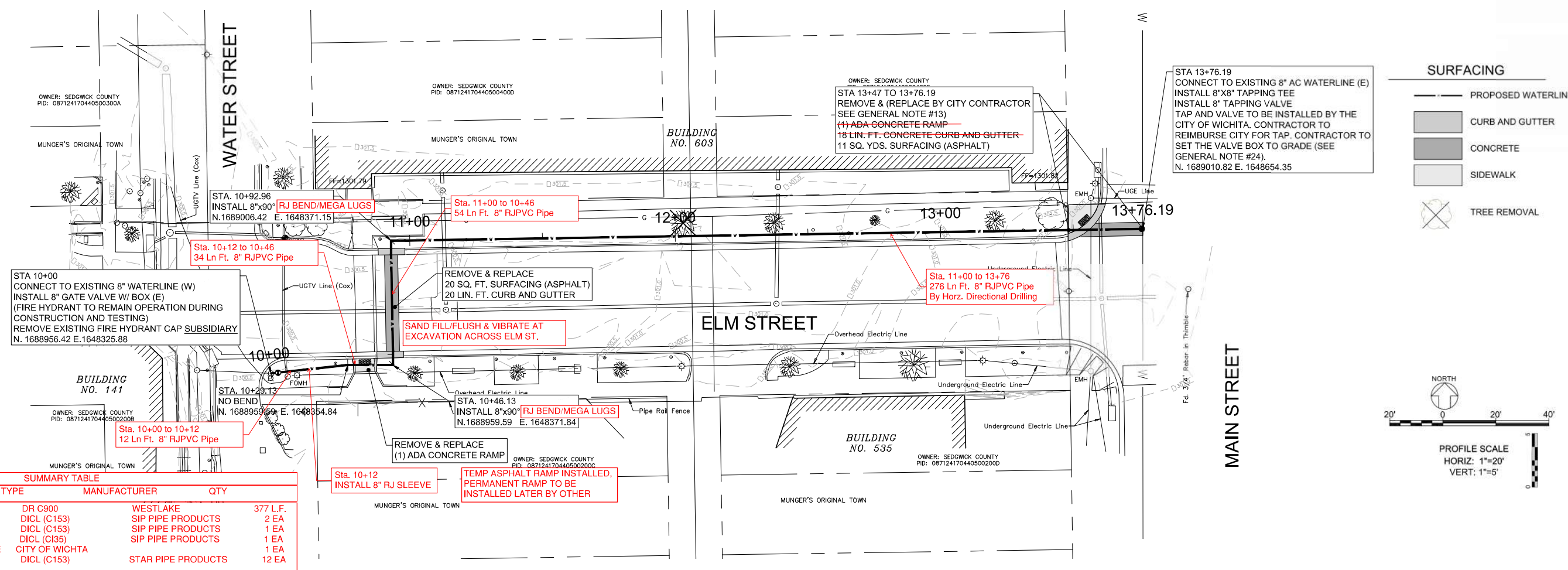
ENGINEERING



CONSULTANTS
1227 NORTH MAIN STREET
HUTCHINSON, KANSAS 67501
620-665-6394
www.engineering-consultants.com

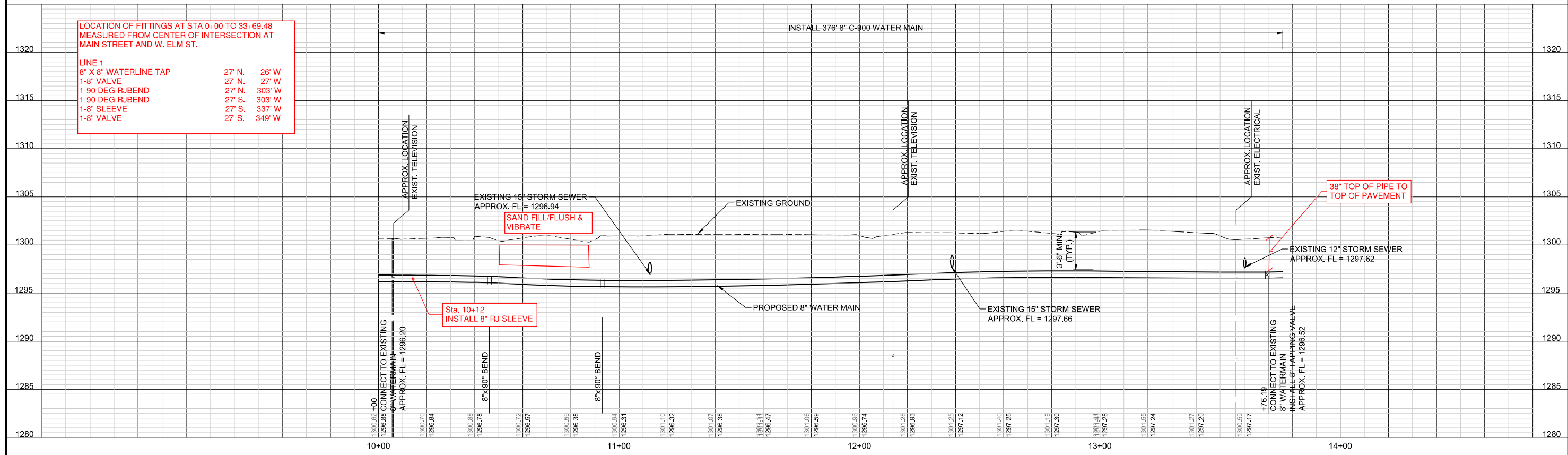
THIS DRAWING IS THE PROPERTY OF
ENGINEERING CONSULTANTS, P.A. AND
SHALL NOT BE COPIED OR REPRODUCED
WITHOUT WRITTEN AUTHORIZATION
FROM ENGINEERING CONSULTANTS, P.A.

ADULT DETENTION FACILITY
WATER SUPPLY
SEDGWICK COUNTY JAIL, 141 W ELM ST., WICHITA, KS 67203



SUMMARY TABLE

ITEM	TYPE	MANUFACTURER	QTY
8" RJPVC PIPE	DR C900	WESTLAKE	377 L.F.
8" DIMJ 90 BEND	DICL (C153)	SIP PIPE PRODUCTS	2 EA
8" GATE VALVE	DICL (C153)	SIP PIPE PRODUCTS	1 EA
8" SLEEVE	DICL (C135)	SIP PIPE PRODUCTS	1 EA
8" X 8" TAPPING SLEEVE	CITY OF WICHITA		1 EA
8" PIPE RESTRAINTS	DICL (C153)	STAR PIPE PRODUCTS	12 EA



LOCATION OF FITTINGS AT STA 0+00 TO 33+69.48
MEASURED FROM CENTER OF INTERSECTION AT
MAIN STREET AND W. ELM ST.

LINE	TYPE	27' N.	26' W.
1	8" X 8" WATERLINE TAP	27' N.	26' W.
	1-8" VALVE	27' N.	27' W.
	1-90 DEG RJ BEND	27' N.	303' W.
	1-90 DEG RJ BEND	27' S.	303' W.
	1-8" SLEEVE	27' S.	337' W.
	1-8" VALVE	27' S.	349' W.

Revision Schedule

No	Description	Date

DATE: 6.14.2023
JOB No: 22-246
DESIGN BY: AJG
DRAWN BY: AJG
CHECK BY: BLE

WATER SUPPLY
PLAN AND PROFILE
1
PPW3
OF
12

