

BENCHMARKS:
 BM #1: "□" Chiseled on top of Curb approximately 0.8' south and 53.2' east of the southwest property corner of Lot 10, Block A, Hoover Industrial Park 2nd Addition, Wichita, Sedgwick County, Kansas.
 Elevation=1333.34 (NAVD 88)

BM #1: "□" Chiseled on top of Curb approximately 32.3 south and 272.2' west of the southwest property corner of Lot 10, Block A, Hoover Industrial Park 2nd Addition, Wichita, Sedgwick County, Kansas.
 Elevation=1333.38 (NAVD 88)

LEGEND:

CL = Centerline

(TS) = Test Station.

CT = Court

SWS = Stormwater Sewer

TAP Saddle =
 32' South and 866' East of Centerline Hoover Road & Hoover Ct.

TAP Valve =
 30' South and 866' East of Centerline Hoover Road & Hoover Ct.

TAP Saddle = 32' S of CL of Hoover Ct. AND
 86' W. along Hoover Ct. from SWS Curb Inlet Manhole Lid (South Side Inlet).

TAP Valve = 30' S of CL of Hoover Ct. AND
 86' W. along Hoover Ct. from SWS Curb Inlet Manhole Lid (South Side Inlet).

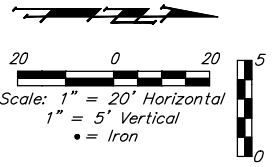
NOTE:
 Existing 12" Water Main was located about 4' South of Plan Location. Fire Hydrant installed about 0.5' North of Plan Location.

NORTHINGS (N) AND EASTINGS (E):
 STATE PLANE COORDINATES - KANSAS GRID SOUTH - NAD83.
 ELEVATIONS: NAVD88

SURVEY SHOTS BY: JAMES RALSTON - BAUGHMAN COMPANY, P.A.

Contractor to verify depth and location of existing utilities. Contractor to relocate any existing utilities as necessary for construction.

TEE (8"x6") = 28' N. of CL of Hoover Ct. AND
 83' W. along Hoover Ct. from SWS Curb Inlet Manhole Lid (North Side Inlet). AND 4' West of Fire Hydrant.



CAP at TEE = 29' N. of CL of Hoover Ct. AND
 83' W. along Hoover Ct. from SWS Curb Inlet Manhole Lid (North Side Inlet).

FH Valve (6") = 28' N. of CL of Hoover Ct. AND
 82' W. along Hoover Ct. from SWS Curb Inlet Manhole Lid (North Side Inlet). AND 3' West of Fire Hydrant.

Fire Hydrant = 28' N. of CL of Hoover Ct. AND
 79' W. along Hoover Ct. from SWS Curb Inlet Manhole Lid (North Side Inlet).

Fire Hydrant:
 N= 6,818.10 E= 5,858.57
 N=1,711,321.13 E=1,628,807.60

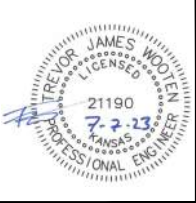
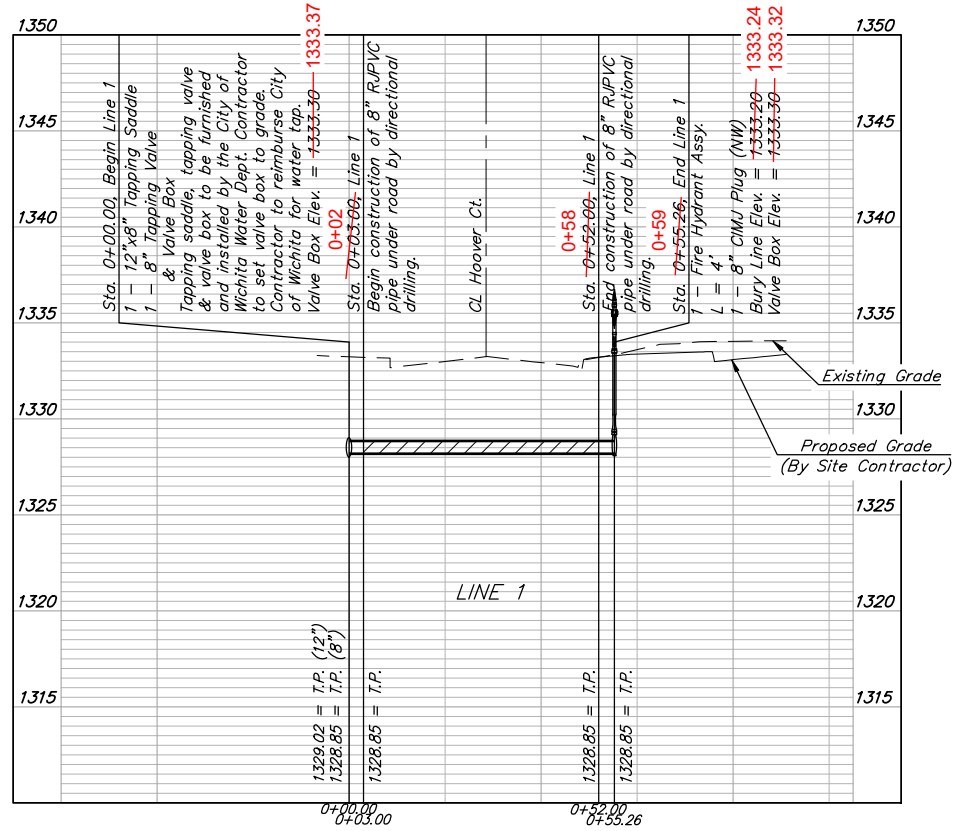
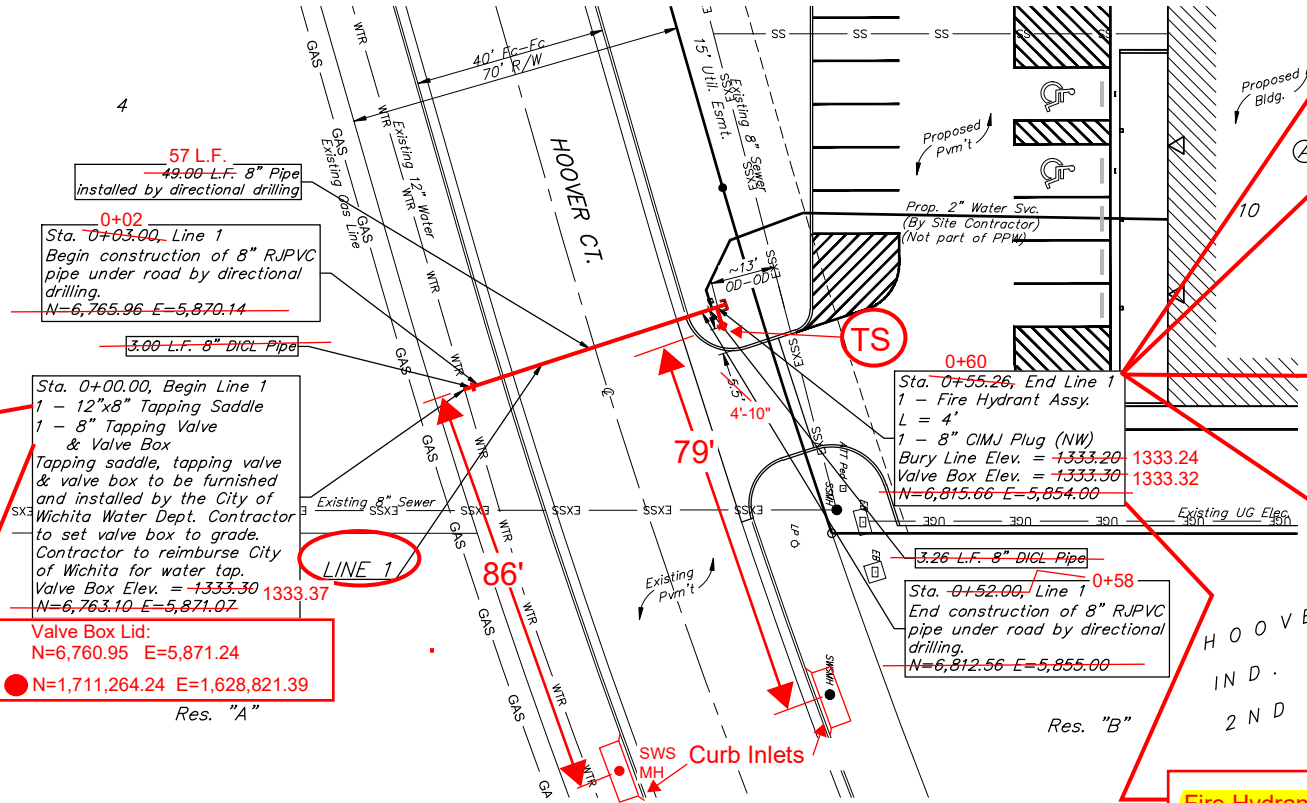
FH Valve Box Lid:
 N= 6,817.11 E= 5,855.90
 N=1,711,320.10 E=1,628,804.95

TEE (8" x 6") =
 28' North and 867' East of Centerline Hoover Road & Hoover Ct.

8" CAP (North End Tee) =
 29' North and 867' East of Centerline Hoover Road & Hoover Ct.

FIRE HYDRANT VALVE BOX =
 28' North and 868' East of Centerline Hoover Road & Hoover Ct.

FIRE HYDRANT =
 28' North and 871' East of Centerline Hoover Road & Hoover Ct.



BAUGHMAN COMPANY
 315 Ellis St.
 Wichita, KS 67211
 316-262-7271
 BaughmanCo.com

HOOPER INDUSTRIES

LINE 1

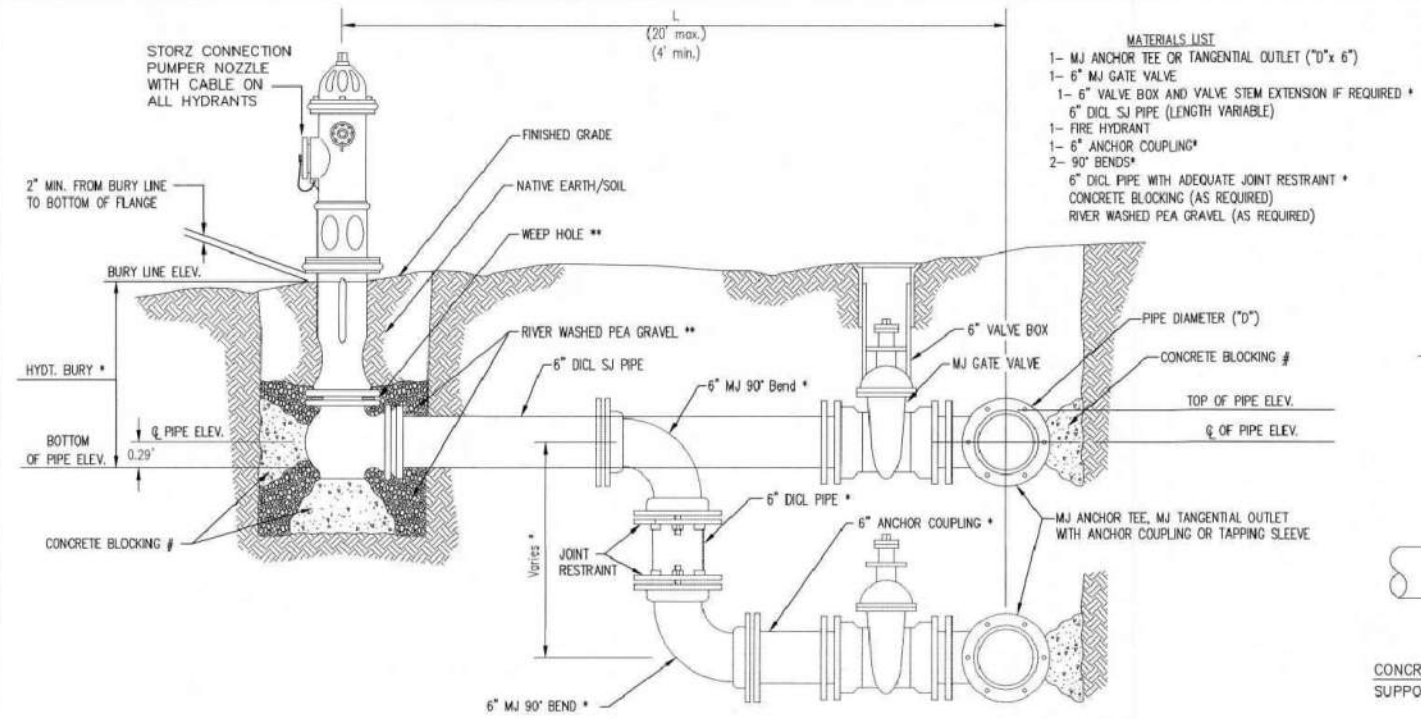
WATER DISTRIBUTION SYSTEM

PROJECT NUMBER:
 23-01-E424

DESIGN: KH DRAWN: TMS

DATE: July 10, 2023

SHEET OF
2 11



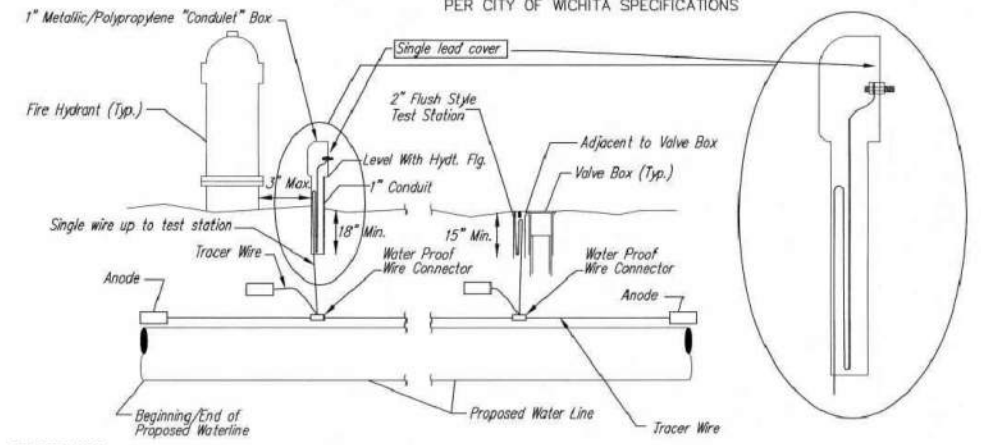
- MATERIALS LIST**
- 1- MJ ANCHOR TEE OR TANGENTIAL OUTLET (10" x 6")
 - 1- 6" MJ GATE VALVE
 - 1- 6" VALVE BOX AND VALVE STEM EXTENSION IF REQUIRED *
 - 6" DI CL SJ PIPE (LENGTH VARIABLE)
 - 1- FIRE HYDRANT
 - 1- 6" ANCHOR COUPLING*
 - 2- 90° BENDS*
 - 6" DI CL PIPE WITH ADEQUATE JOINT RESTRAINT *
 - CONCRETE BLOCKING (AS REQUIRED)
 - RIVER WASHED PEA GRAVEL (AS REQUIRED)

* IF THE REQUIRED HYDRANT BURY IS IN EXCESS OF 5', BUT LESS THAN 7', CONTRACTOR SHALL USE STANDARD 5' HYDRANT BURY AND HYDRANT BARREL EXTENSIONS AS NECESSARY. IF THE REQUIRED HYDRANT BURY IS GREATER THAN 7', CONTRACTOR SHALL USE 5' HYDRANT BURY, 2-MJ 90° BENDS, 6" ANCHOR COUPLING AND 6" DI CL PIPE AS NECESSARY FOR VERTICAL ADJUSTMENT. THE CONTRACTOR SHALL PROVIDE ADEQUATE THRUST BLOCKING AT HYDRANT AND MEGALUGS, OR SIMILAR RESTRAINT BETWEEN 90° BENDS TO SECURE ALL FITTINGS DURING TESTING AND OPERATION. THE CONTRACTOR SHALL PROVIDE A VALVE STEM EXTENSION PER DETAIL THIS SHEET.

** CAUTION: WEEP HOLES TO BE KEPT CLEAR DURING CONSTRUCTION AND BACKFILL. CONCRETE FOR THRUST BLOCKING SHALL NOT OBSTRUCT WEEP HOLES. PLACE 1 CUBIC FOOT OF RIVER WASHED PEA GRAVEL AROUND EACH WEEP HOLE.

CONCRETE THRUST BLOCKING SHALL BE KEPT CLEAR OF BOLTS, NUTS, AND MJ ACCESSORIES.

FIRE HYDRANT ASSEMBLY
PER CITY OF WICHITA SPECIFICATIONS



TRACER WIRE
Conductive type pipe locator/tracer wire shall be installed to locate all waterline pipe regardless of pipe material. The wire shall extend the entire length of the proposed pipe. The wire shall be taped to the waterline and pulled with the pipe. A waterproof connector shall be used at splice locations. A complete list of approved tracer wire and waterproof connectors can be found on the City of Wichita's website at www.wichita.gov.

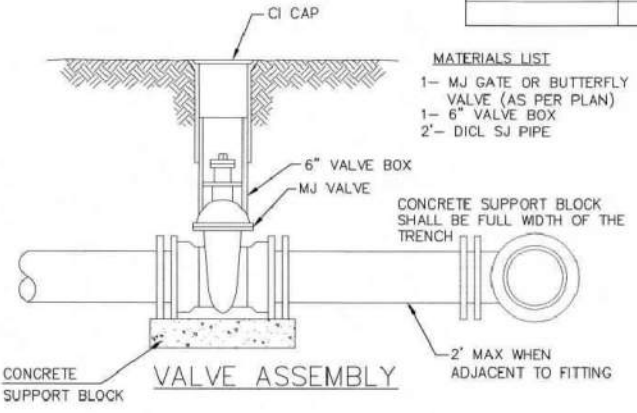
WIRE
The tracer wire shall be Blue No. 12 AWG CCS with 45 mil HDPE insulation. To allow for grade adjustment, a minimum of 12" of excess wire shall be coiled at the bottom of the test station for all wires. Wire connectors shall be installed per manufacturer recommendations. Contractor shall attach wire being installed with proposed water main to any tracer wire installed with adjacent waterline projects.

TEST STATIONS
The test station for fire hydrant application shall be a 1" "conduit" style station as manufactured by AGRA Industries with a removable solid cover having a single lead extending from the face or approved equal. The "conduit" style test station shall be attached to a 1" rigid galvanized conduit with a minimum length of 36" and plastic end bushing. The flush style shall have the word "WATER" stamped or molded into the lid. The test station for valve applications shall be a 2" flush style test station with wire connector on lid. Model # T2PH7B1LP Handley Industries or CD14*TP SnakePit as manufactured by Copperhead Industries or approved equal. The flush style shall have the word "WATER" stamped or molded into the lid. All test stations shall be manufactured using molded blue tops or sufficiently coated with blue enamel paint. The tracer wire and the anode wire shall be installed to allow 12" of wire within the test station. The location of all test stations shall be recorded, and shown in the as-built drawings. Flush style test stations shall not be installed in pavement or sidewalk unless approved by the Engineer. Contractor shall extend tracer wire & move flush mount test station to nearest location out of pavement or sidewalk.

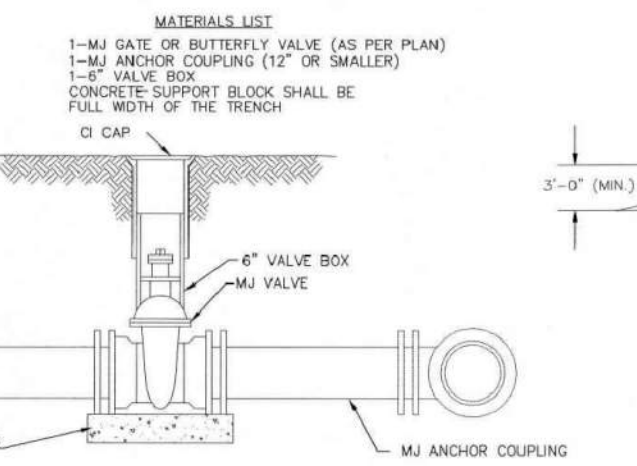
ANODES
The anodes shall be 3 lb. bare zinc or magnesium. The anodes shall be buried at the same elevation as the waterline at each test station. The anodes shall be connected to 12 AWG CCS which shall be extended to the test station.

TRACER WIRE DETAIL
COST IS SUBSIDIARY TO PIPE INSTALLATION

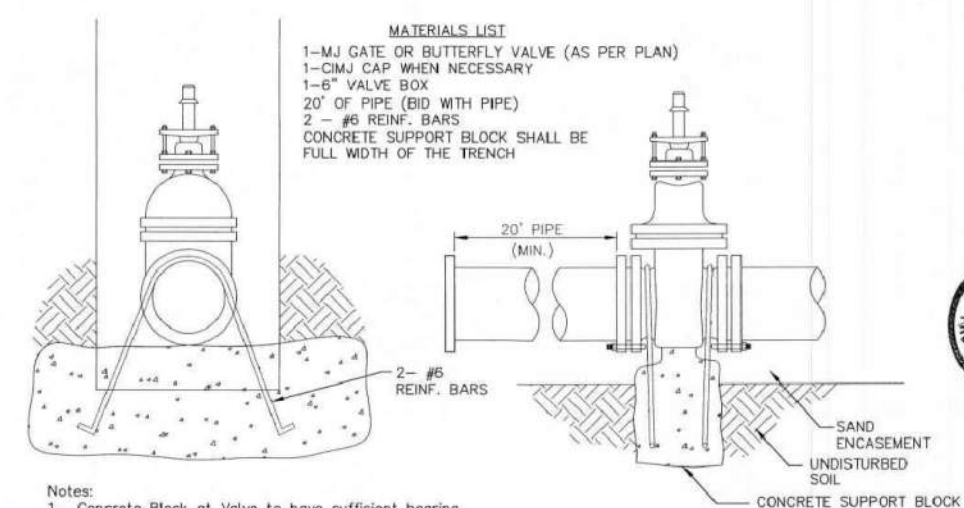
FIRE HYDRANTS REQUIRED					
STATION	BURY LINE ELEVATION	TOP OF PIPE ELEVATION	FIRE HYDRANT BURY REQUIRED*	VALVE STEM EXT. REQUIRED (ft)*	
0+59	0+55.26	1333.20	1328.85	5.0'	No.
		1333.24			



- MATERIALS LIST**
- 1- MJ GATE OR BUTTERFLY VALVE (AS PER PLAN)
 - 1- 6" VALVE BOX
 - 2"- DI CL SJ PIPE



ANCHORED VALVE ASSEMBLY

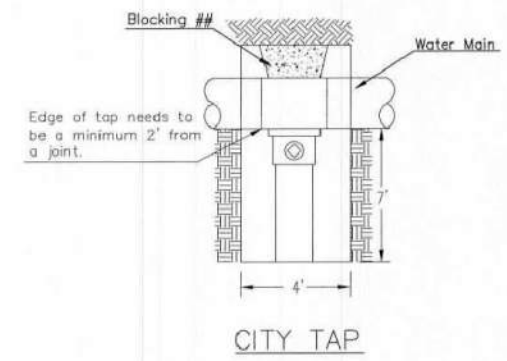


- MATERIALS LIST**
- 1- MJ GATE OR BUTTERFLY VALVE (AS PER PLAN)
 - 1- CIMJ CAP WHEN NECESSARY
 - 1- 6" VALVE BOX
 - 20' OF PIPE (BID WITH PIPE)
 - 2 - #6 REINF. BARS
 - CONCRETE SUPPORT BLOCK SHALL BE FULL WIDTH OF THE TRENCH

- Notes:
- Concrete Block at Valve to have sufficient bearing in undisturbed soil to prevent thrust movement as shown in table at right. Field Engineer to determine thrust loading of undisturbed soil and final size of thrust block.
 - The thrust block shall be constructed such that bolts, nuts, and other MJ accessories are kept clear of concrete.
 - All valves at dead ends and at other locations as called out on the plans shall be blocked as shown here.

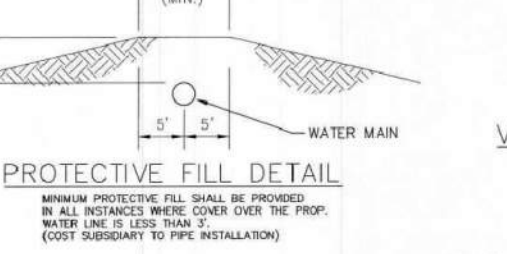
THRUST AT VALVES	
VALVE	THRUST AT 150 #/sq ft
4"	1809 lbs.
6"	4245 lbs.
8"	7540 lbs.
12"	16965 lbs.

ANCHORED VALVE ASSEMBLY, SPECIAL



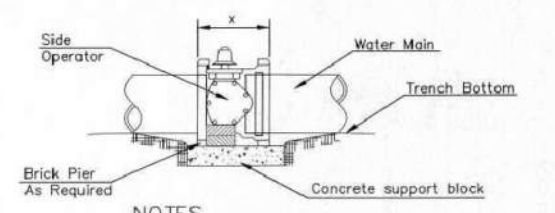
CITY TAP

When the City of Wichita makes tap, blocking is to be done by Contractor



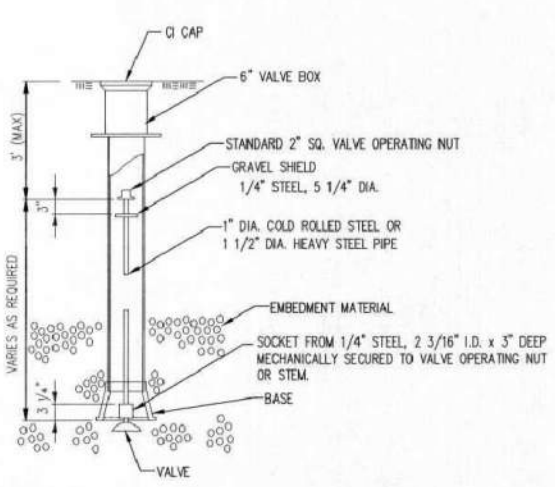
PROTECTIVE FILL DETAIL

MINIMUM PROTECTIVE FILL SHALL BE PROVIDED IN ALL INSTANCES WHERE COVER OVER THE PROP. WATER LINE IS LESS THAN 3'. (COST SUBSIDIARY TO PIPE INSTALLATION)



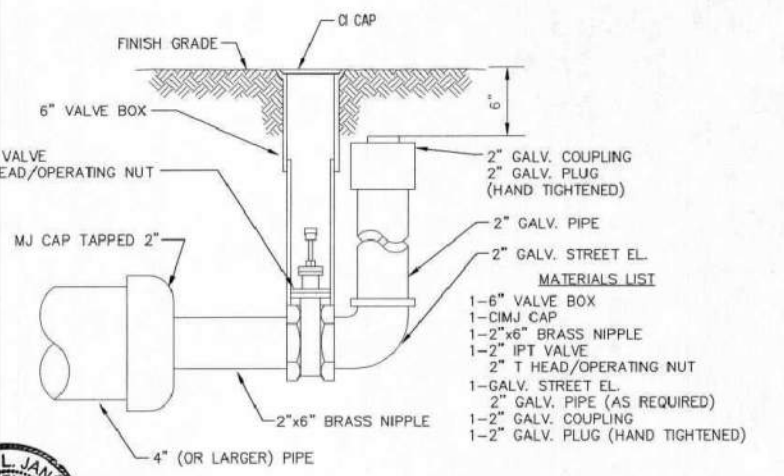
- NOTES**
- This detail covers Butterfly Valve installation, inclusive, regardless of type of pipe or joint used. 24" and larger lines to be detailed on plans.
 - 6" Valve Box and Cover required per City of Wichita Std. Specifications.
 - Conc. Support Block to be full width of trench.

CONCRETE SUPPORT BLOCKING FOR BUTTERFLY VALVE INSTALLATION



VALVE STEM EXTENSION DETAIL

NOTE: ONE VALVE STEM EXTENSION FOR EACH VALVE BURIED GREATER THAN 5'.



2" BLOWOFF ASSEMBLY



CITY OF WICHITA
PUBLIC WORKS & UTILITIES ENGINEERING DIVISION

STANDARD WATER ASSEMBLY DETAIL
CITY ENGINEER
GARY JANZEN, P.E.

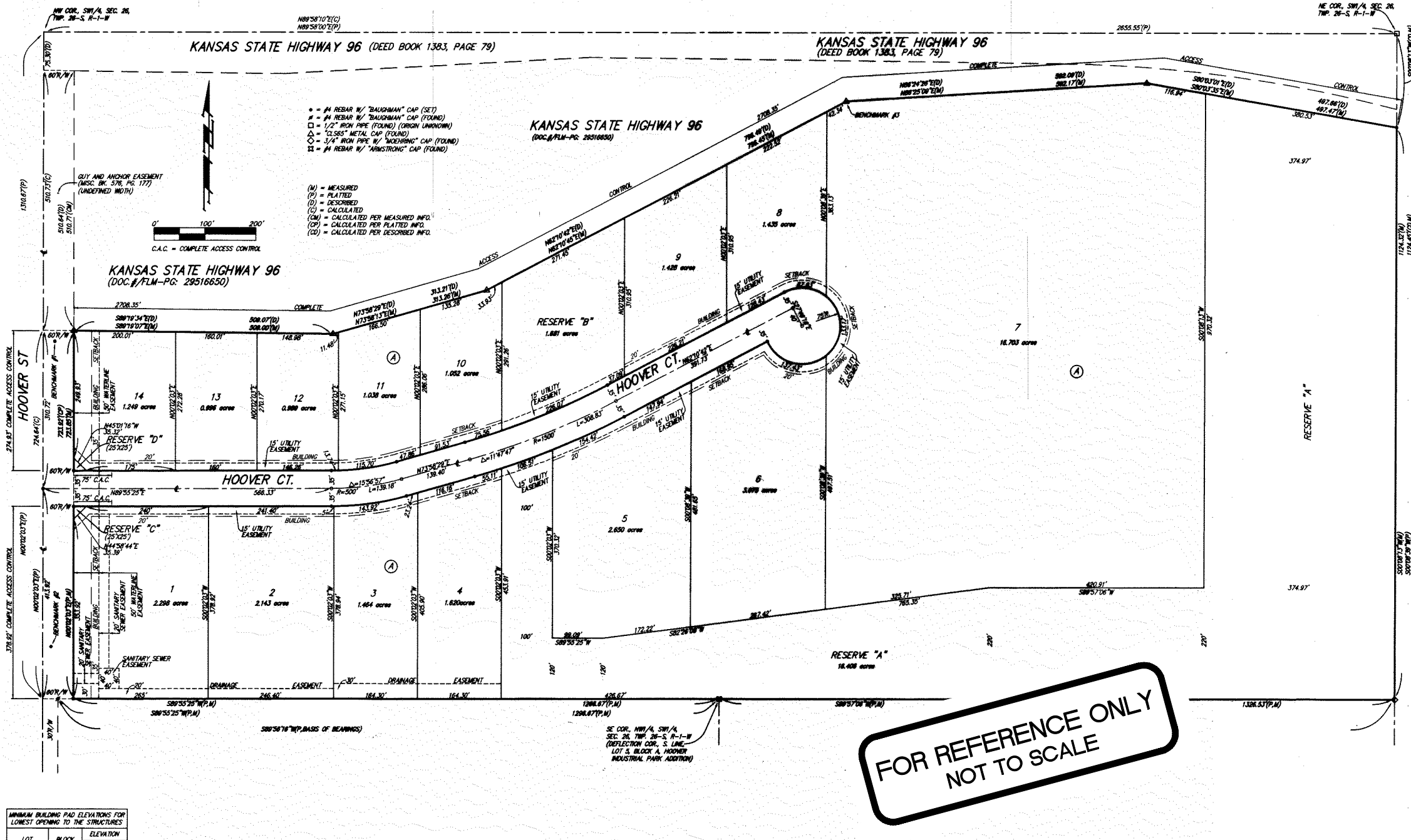
PROJECT NUMBER: OCA NUMBER: DATE:

CITY ENGINEER'S OFFICE
CITY HALL - SEVENTH FLOOR
455 NORTH MAIN STREET
WICHITA, KANSAS 67202-1620
(316) 268-4501

SHEET
4 of 11

REVISED: OCTOBER 2016

HOOVER INDUSTRIAL PARK 2ND ADDITION WICHITA, SEDGWICK COUNTY, KANSAS



**FOR REFERENCE ONLY
NOT TO SCALE**

State of Kansas) SS We, Baughman Company, P.A., Surveyors in
Sedgwick County) and state do hereby certify that we have surveyed and
platted "HOOVER INDUSTRIAL PARK 2ND ADDITION", Wichita, Sedgwick
County, Kansas and that the accompanying plat is a true and correct
exhibit of the property surveyed, described as and being a portion of all of
Lots 1, 2, 3, 4, 5, 6, 7, and 8, Block A, TOGETHER with all of Lots 1, 2,
3, 4, 5, 6, 7, 8, 9, 10, 11, 12, 13, 14, and 15, Block B, and TOGETHER
with all of 40th Street North, all as platted and dedicated in Hoover
Industrial Park Addition, Sedgwick County, Kansas, TOGETHER with Lots 8,
10, 11, 12, 13, 14, 15, and 16, in said Block A, TOGETHER with Lots 16,
17, 18, 19, and 20, in said Block B, TOGETHER with Reserve "A", as
platted in said Hoover Industrial Park Addition, and TOGETHER with 41st
Street North as dedicated in said Hoover Industrial Park Addition, EXCEPT
that part of said Lots 8, 10, 11, 12, 13, 14, 15, and 16, in said Block A,
and EXCEPT that part of said Lots 16, 17, 18, 19, and 20, in said Block
B, and except that part of said Reserve "A", and EXCEPT that part of
said 41st Street North lying within and being coincident with the following
described tract of land as dedicated in the Right of Way Dedication
recorded in DOC #/FLM-PG: 29516650 and described as follows:
Beginning of the northwest corner of Lot 16, Block A, in said Hoover
Industrial Park Addition; thence S00°02'01"W along the west line of Lot 16
in said Block A, along the west line of 41st St. N, as dedicated in said
Hoover Industrial Park Addition, and along the west line of Lot 20, Block
B, in said Hoover Industrial Park Addition, 510.64 feet; thence S89°19'34"E,
508.07 feet; thence N73°58'29"E, 313.21 feet; thence N62°10'42"E, 796.49
feet; thence N86°24'26"E, 582.08 feet; thence S80°03'01"E, 497.66 feet to
a point on the east line of Reserve "A" in said Hoover Industrial Park
Addition; thence N00°08'39"E along the east line of said Reserve "A",
33.87 feet to the northeast corner of said Reserve "A"; thence westerly
along the north line of said Reserve "A", and along the north line of Lot 9
in said Block A, to a point on the north line of Lot 13, having a central angle of
135°32' and a radius of 2745.37 feet, an arc distance of 867.26 feet,
(having a chord length of 665.62 feet bearing N82°24'06"W, to the end
of said curve in the north line of said Lot 8; thence N89°18'00"W along
the north line of said Lot 9 and Lots 10, 11, 12, and 13 in said Block A,
920.70 feet to a deflection corner in the north line of said Lot 13; thence
S86°53'00"W along the north line of said Lot 13, and Lots 14 and 15 in
said Block A, 601.30 feet to a deflection corner in the north line of said
Lot 15; thence N80°18'00"W along the north line of said Lots 15 and 16,
414.00 feet to the point of beginning.

Existing public easements, building setbacks,
access controls, and dedications, if any, being
voted by virtue of K.S.A. 12-512b, as amended.
All being situated in the Southwest Quarter of
Section 26, Township 26 South, Range 1 West of the
Sixth Principal Meridian, Sedgwick County, Kansas.
Baughman Company, P.A.



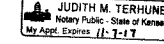
Know all men by these presents that we,
the undersigned, have caused the land in the surveyors certificate to be
platted into Lots, a Block, Reserves, and a Street to be known as
"HOOVER INDUSTRIAL PARK 2ND ADDITION", Wichita, Sedgwick County,
Kansas. The utility easements are hereby granted as indicated for the
construction and maintenance of all public utilities. The drainage
easements are hereby granted as indicated for drainage purposes. The
sanitary sewer easements are hereby granted as indicated for the
construction and maintenance of a sanitary sewer system and related
appurtenances. The waterline easement is hereby granted as indicated for
the construction and maintenance of water lines and related
appurtenances. No signs, light poles, private drainage systems, masonry
trash enclosures or other structures shall be located within public utility
easements unless permitted by the Public Works Department of the
appropriate governing body. The street is hereby dedicated to and for the
use of the public. Reserve "A" is reserved for open space, lakes,
landscaping, off-site signs, billboards and related appurtenances, drainage
purposes, and utilities as confined to easement. Reserve "B" is reserved
for open space, landscaping, lakes, drainage purposes, and utilities as
confined to easement. Reserves "C" and "D" are reserved for open space,
landscaping, entry monuments, signs, and waterlines and related
appurtenances as confined to easement. Reserves "A", "B", "C" and "D"
shall be owned and maintained by the lot owners association for the
addition. Access controls shall be as depicted on the face of the plat
and are hereby granted to the City of Wichita, Kansas. The Minimum
Building Pad Elevations for the lowest opening to the structures shall be
as indicated on the face of the plat.
Big Bang Real Estate LLC, a Kansas limited liability
company, I/A/O Big Bang Money, L.L.C., a Kansas
limited liability company.

Joseph J. Hammelgarn Sole Member/Manager

State of Kansas) SS The foregoing instrument acknowledged before
Sedgwick County) me, this 26th day of December, 2017, by Joseph J. Hammelgarn, Sole
Member/Manager of Big Bang Real Estate LLC, a Kansas limited liability
company, I/A/O Big Bang Money, L.L.C., a Kansas limited liability company
on behalf of the limited liability company.

Judith M. Terhune Notary Public
JUDITH M. TERHUNE

My App'l. Exp. 11-7-17



Baughman Company, P.A.
315 Ellis St. Wichita, KS 67211 P 316-267-7271 F 316-262-0419

This plat of "HOOVER INDUSTRIAL PARK 2ND ADDITION", Wichita, Sedgwick County, Kansas has been submitted to and approved by the Wichita-Sedgwick County Metropolitan Area Planning Commission, Wichita, Kansas. Dated this 27th day of September, 2017. Wichita-Sedgwick County Metropolitan Area Planning Commission

Joseph A. Johnson Chairman
Dale Miller Secretary

SEAL
WICHITA SEDGWICK COUNTY METROPOLITAN AREA PLANNING COMMISSION
KANSAS

NOTE: A drainage plan has been developed for the plat and that all drainage easements, rights-of-way, or reserves shall remain of established grade or as modified with the approval of the applicable City or County Engineer and unobstructed to allow for the conveyance of stormwater.

NOTE: Existing perpetual joint access easement, (undefined width and location), affecting Lots 1 and 2, Block A, Hoover Industrial Park Addition recorded in DOC#/FLM-PG: 2970008.

This plat approved and all dedications shown hereon, accepted by the City of Wichita, Kansas, this 27th day of November, 2017.

Jeff Ragsdale Mayor, City of Wichita
Karen Sublett Karen Sublett, City Clerk

Recorded in accordance with K.S.A. 58-2005 on this 26th day of December, 2017.

PROF. L. ROSELEO
98-1248
Thomas L. Roseleo, P.S. #1248
Deputy County Surveyor
Sedgwick County, Kansas

State of Kansas) SS This is to certify that this plat has been
Sedgwick County) filed for record in the office of the Register of Deeds, this 26th day of December, 2017 at 10:10 a.m. in Block A, and is duly recorded.
\$5

Tonya Buckingham Register of Deeds
Judy J. Page Deputy

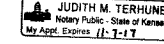
Entered on transfer record this 25th day of December, 2017.

SEAL
WICHITA SEDGWICK COUNTY METROPOLITAN AREA PLANNING COMMISSION
KANSAS

Register of Deeds - Tonya Buckingham
Doc #/Flm-Pg: 29740354
Page Recorded: 1
Recording Fee: \$28.00

Declarant: KYENATOR Authorized: *Joseph J. Hammelgarn*
Date Recorded: 12/26/2017 10:13:53 AM

My App'l. Exp. 11-7-17



Baughman Company, P.A.
315 Ellis St. Wichita, KS 67211 P 316-267-7271 F 316-262-0419



BAUGHMAN COMPANY
315 Ellis St.
Wichita, KS 67211
316-262-7271
BaughmanCo.com

HOOVER INDUSTRIES
COPY OF PLAT

WATER DISTRIBUTION SYSTEM
PROJECT NUMBER:
23-01-E424
DESIGN: DRAWN:
DATE: July 10, 2023
SHEET 11 OF 11