

BENCHMARKS:
 BM #1: "X" Chiseled on Top of Curb, 9.3' west and 35.9' south of the NE corner of Lot 1, Star Lumber Company 5th Addition. Elevation=1305.59 (NAVD88)

BM #2: "X" Chiseled on top of concrete storm sewer curb inlet, approximately 20.6' west and 81.5' south of the southeast corner of Lot 1, Star Lumber Company Addition, Wichita, Sedgwick County, Kansas. Elevation=1303.92 (NAVD88)

Contractor to verify depth and location of existing utilities. Contractor to relocate any existing utilities as necessary for construction.

Contact utility companies 3 weeks prior to construction to coordinate temporary removal/replacement.
 Heide Bryan, Evergy, (316) 261-6354
 Shannon Brinkmeyer, AT&T (316) 268-2931
 Travis Taylor, Cox Comm., Travis.taylor@cox.com

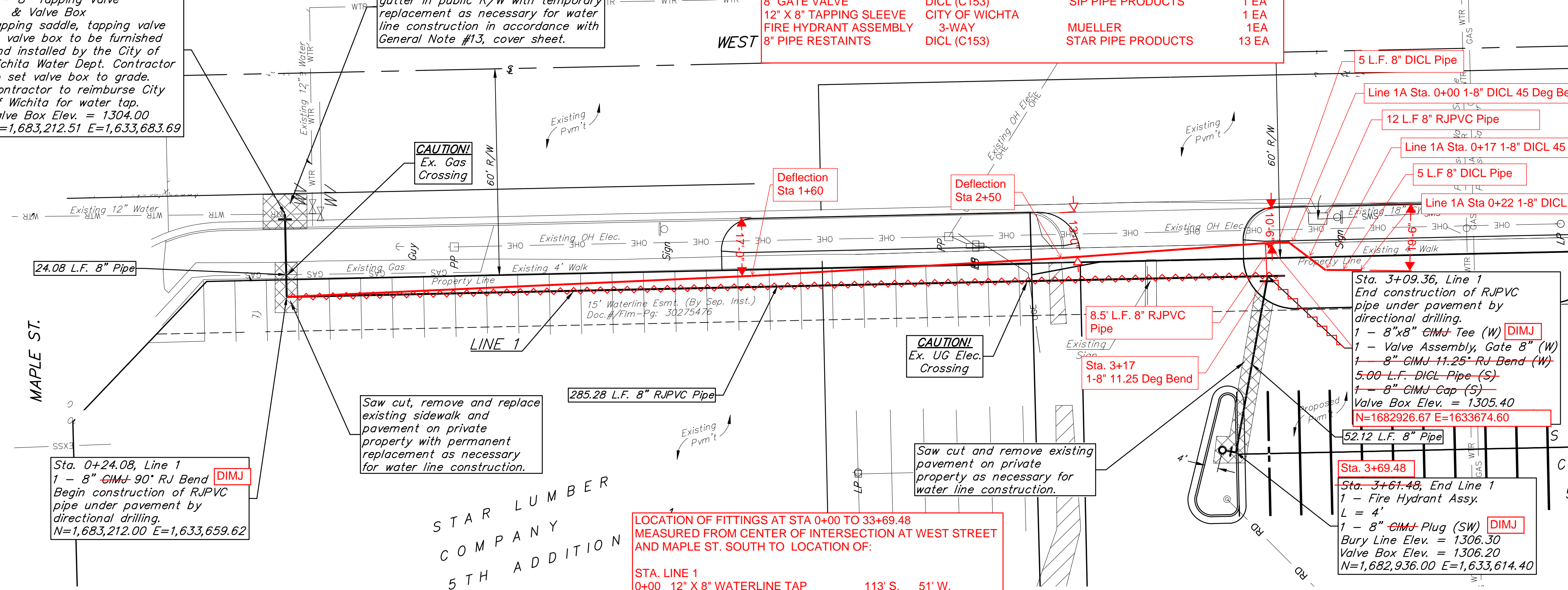
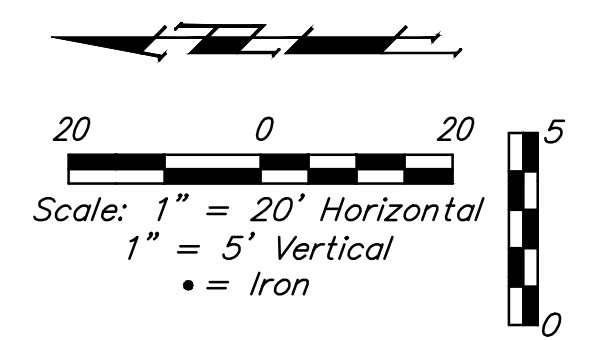
Sta. 0+00.00, Begin Line 1
 1 - 12"x8" Tapping Saddle
 1 - 8" Tapping Valve & Valve Box
 Tapping saddle, tapping valve & valve box to be furnished and installed by the City of Wichita Water Dept. Contractor to set valve box to grade. Contractor to reimburse City of Wichita for water tap. Valve Box Elev. = 1304.00
 N=1,683,212.51 E=1,633,683.69

Sta. 0+24.08, Line 1
 1 - 8" CIMJ 90° RJ Bend
 Begin construction of RJPVC pipe under pavement by directional drilling.
 N=1,683,212.00 E=1,633,659.62

Saw cut, remove and replace existing pavement and curb & gutter in public R/W with temporary replacement as necessary for water line construction in accordance with General Note #13, cover sheet.

Saw cut, remove and replace existing sidewalk and pavement on private property with permanent replacement as necessary for water line construction.

SUMMARY TABLE			
ITEM	TYPE	MANUFACTURER	QTY
8" DICL PIPE	ANSI A21.4 CLASS 350	AMERICAN CAST IRON	26 L.F.
8" RJPVC PIPE			369 L.F.
8" DIMJ TEE	DICL (C153)	SIP PIPE PRODUCTS	1 EA
8" DIMJ 45 BEND	DICL (C153)	SIP PIPE PRODUCTS	2 EA
8" DIML 22.5 BEND	DICL (C153)	SIP PIPE PRODUCTS	1 EA
8" GATE VALVE	DICL (C153)	SIP PIPE PRODUCTS	1 EA
12" X 8" TAPPING SLEEVE		CITY OF WICHITA	1 EA
FIRE HYDRANT ASSEMBLY	3-WAY	MUELLER	1EA
8" PIPE RESTRAINTS	DICL (C153)	STAR PIPE PRODUCTS	13 EA

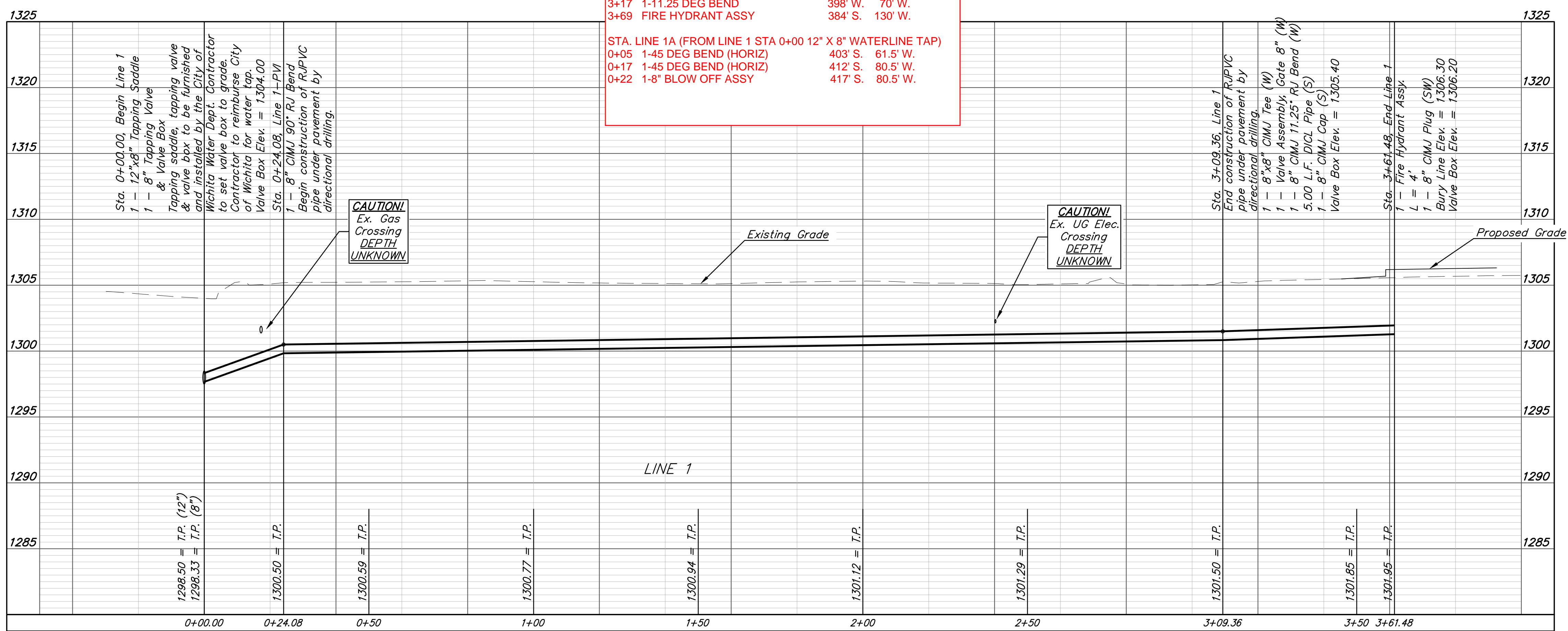


Pipe layout is shown with horizontal and vertical deflections. Contractor to use short pipe lengths, high deflection couplers, and manufacturer recommended pipe deflections to meet planned alignment.

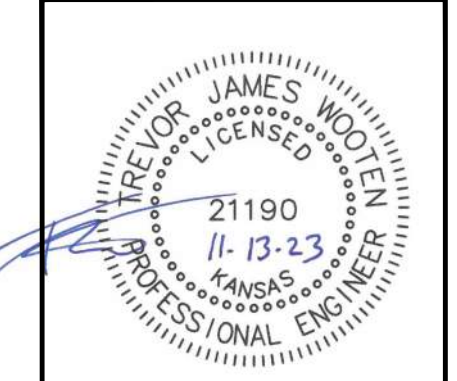
LOCATION OF FITTINGS AT STA 0+00 TO 33+69.48 MEASURED FROM CENTER OF INTERSECTION AT WEST STREET AND MAPLE ST. SOUTH TO LOCATION OF:

STA. LINE 1			
0+00	12" X 8" WATERLINE TAP	113' S.	51' W.
0+01	1-8" VALVE	113' S.	52' W.
0+24	1-90 DEG BEND	113' S.	76' W.
3+09	1-8" X 8" TEE	398' S.	61.5' W.
3+17	1-11.25 DEG BEND	398' W.	70' W.
3+69	FIRE HYDRANT ASSY	384' S.	130' W.

STA. LINE 1A (FROM LINE 1 STA 0+00 12" X 8" WATERLINE TAP)			
0+05	1-45 DEG BEND (HORIZ)	403' S.	61.5' W.
0+17	1-45 DEG BEND (HORIZ)	412' S.	80.5' W.
0+22	1-8" BLOW OFF ASSY	417' S.	80.5' W.



DEPTH UNKNOWN
 Contractor to Verify Depth & Location of Existing Water Line Prior to Construction.



BAUGHMAN COMPANY
 315 Ellis St.
 Wichita, KS 67211
 316-262-7271
 BaughmanCo.com

STAR LUMBER HEADQUARTERS

LINE 1

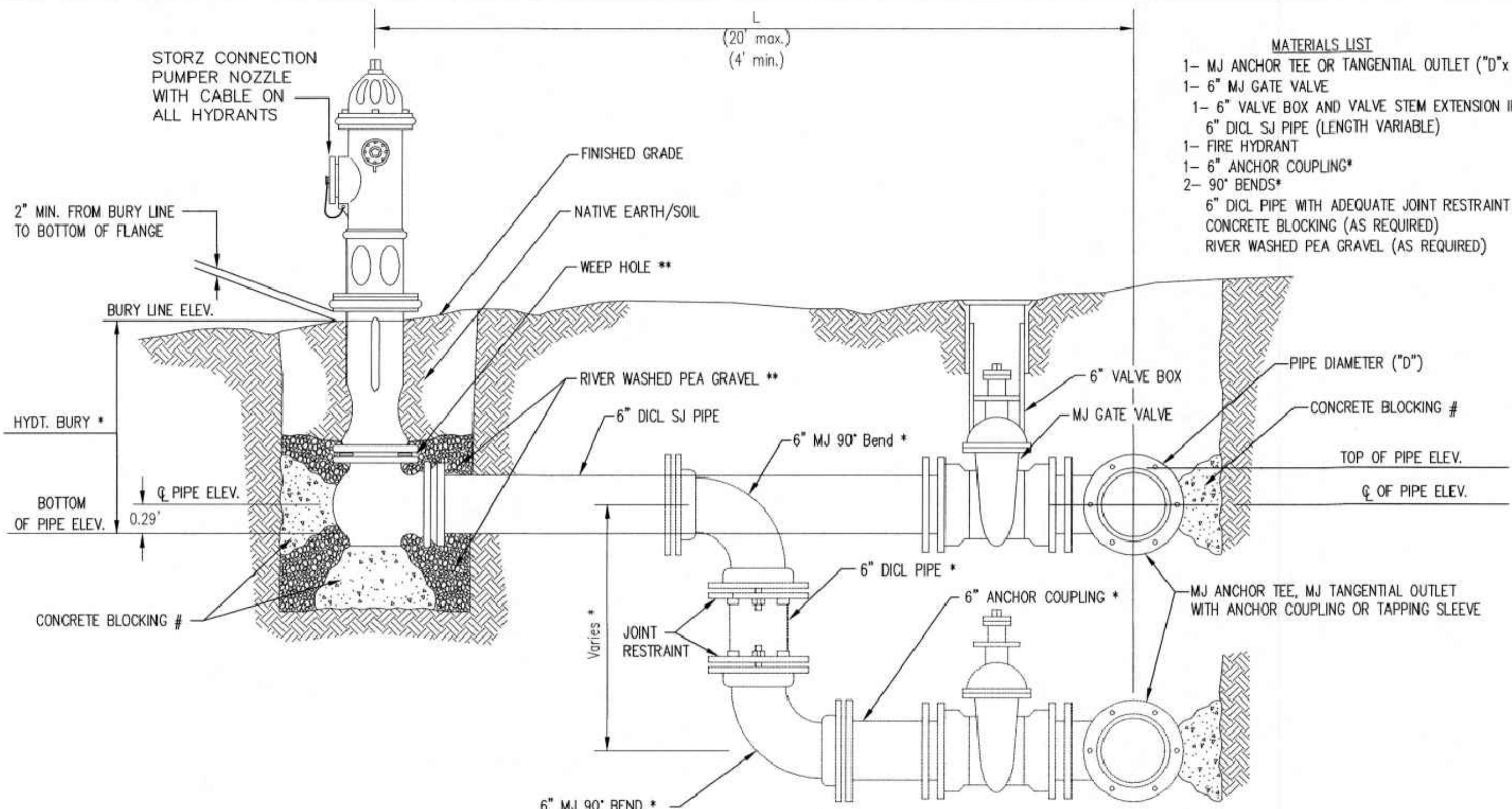
WATER DISTRIBUTION SYSTEM

PROJECT NUMBER:
 23-01-E419

DESIGN: TJW DRAWN: TMS
 DATE: November 14, 2023

SHEET **2** OF **11**

File: E:\Projects\Star Lumber HQ Site (23-01-E419)\Engineering\Phase 1\PPW\PPW.dwg



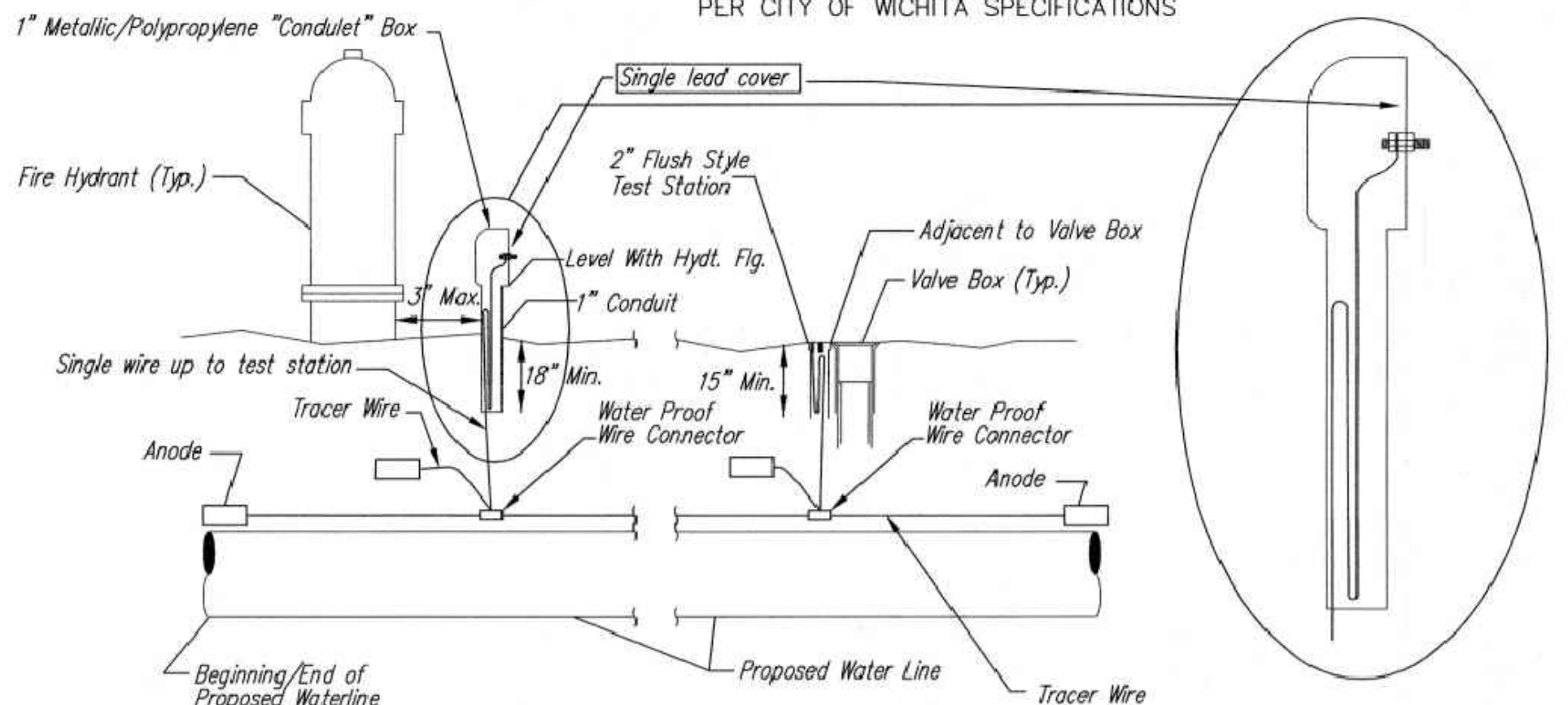
- MATERIALS LIST**
- 1- MJ ANCHOR TEE OR TANGENTIAL OUTLET ("0"x 6")
 - 1- 6" MJ GATE VALVE
 - 1- 6" VALVE BOX AND VALVE STEM EXTENSION IF REQUIRED *
 - 6" DI CL SJ PIPE (LENGTH VARIABLE)
 - 1- FIRE HYDRANT
 - 1- 6" ANCHOR COUPLING*
 - 2- 90° BENDS*
 - 6" DI CL PIPE WITH ADEQUATE JOINT RESTRAINT *
 - CONCRETE BLOCKING (AS REQUIRED)
 - RIVER WASHED PEA GRAVEL (AS REQUIRED)

* IF THE REQUIRED HYDRANT BURY IS IN EXCESS OF 5', BUT LESS THAN 7', CONTRACTOR SHALL USE STANDARD 5' HYDRANT BURY AND HYDRANT BARREL EXTENSIONS AS NECESSARY. IF THE REQUIRED HYDRANT BURY IS GREATER THAN 7', CONTRACTOR SHALL USE 5' HYDRANT BURY, 2-MJ 90° BENDS, 6" ANCHOR COUPLING AND 6" DI CL PIPE AS NECESSARY FOR VERTICAL ADJUSTMENT. THE CONTRACTOR SHALL PROVIDE ADEQUATE THRUST BLOCKING AT HYDRANT AND MEGALUGS, OR SIMILAR RESTRAINT BETWEEN 90° BENDS TO SECURE ALL FITTINGS DURING TESTING AND OPERATION. THE CONTRACTOR SHALL PROVIDE A VALVE STEM EXTENSION PER DETAIL THIS SHEET.

** CAUTION: WEEP HOLES TO BE KEPT CLEAR DURING CONSTRUCTION AND BACKFILL. CONCRETE FOR THRUST BLOCKING SHALL NOT OBSTRUCT WEEP HOLES. PLACE 1 CUBIC FOOT OF RIVER WASHED PEA GRAVEL AROUND EACH WEEP HOLE.

CONCRETE THRUST BLOCKING SHALL BE KEPT CLEAR OF BOLTS, NUTS, AND MJ ACCESSORIES.

FIRE HYDRANT ASSEMBLY
PER CITY OF WICHITA SPECIFICATIONS



TRACER WIRE
Conductive type pipe locator/tracer wire shall be install to locate all waterline pipe regardless of pipe material. The wire shall extend the entire length of the proposed pipe. The wire shall be taped to the waterline and pulled with the pipe. A waterproof connector shall be used at splice locations. A complete list of approved tracer wire and waterproof connectors can be found on the City of Wichita's website at www.wichita.gov.

WIRE
The tracer wire shall be Blue No. 12 AWG CCS with 45 mil HDPE insulation. To allow for grade adjustment, a minimum of 12" of excess wire shall be coiled at the bottom of the test station for all wires. Wire connectors shall be installed per manufacturer recommendations. Contractor shall attach wire being installed with proposed water main to any tracer wire installed with adjacent waterline projects.

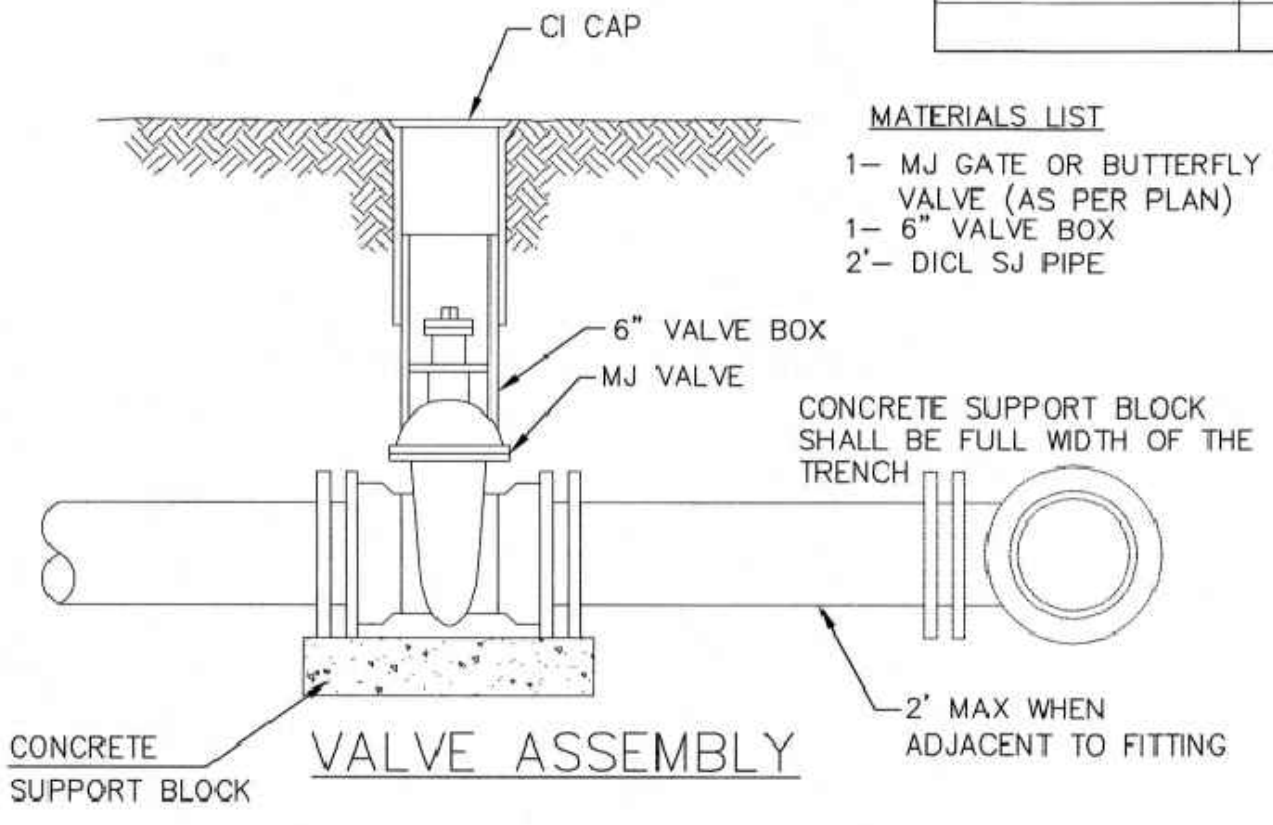
TEST STATIONS
The test station for fire hydrant application shall be a 1" "condulet" style station as manufactured by AGRA Industries with a removable solid cover having a single lead extending from the face or approved equal. The "conduit" style test station shall be attached to a 1" rigid galvanized conduit with a minimum length of 36" and plastic end bushing. The flush style shall have the word "WATER" stamped or molded into the lid. The test station for valve applications shall be a 2" flush style test station with wire connector on lid. Model # T2PH7B1LP Handley Industries or CD14*TP SnakePit as manufactured by Copperhead Industries or approved equal. The flush style shall have the word "WATER" stamped or molded into the lid. All test stations shall be manufactured using molded blue tops or sufficiently coated with blue enamel paint. The tracer wire and the anode wire shall be install to allow 12" of wire within the test station. The location of all test stations shall be recorded, and shown in the as-built drawings. Flush style test stations shall not be installed in pavement or sidewalk unless approved by the Engineer. Contractor shall extend tracer wire & move flush mount test station to nearest location out of pavement or sidewalk.

ANODES
The anodes shall be 3 lb. bare zinc or magnesium. The anodes shall be buried at the same elevation as the waterline at each test station. The anodes shall be connected to 12 AWG CCS which shall be extended to the test station.

TRACER WIRE DETAIL

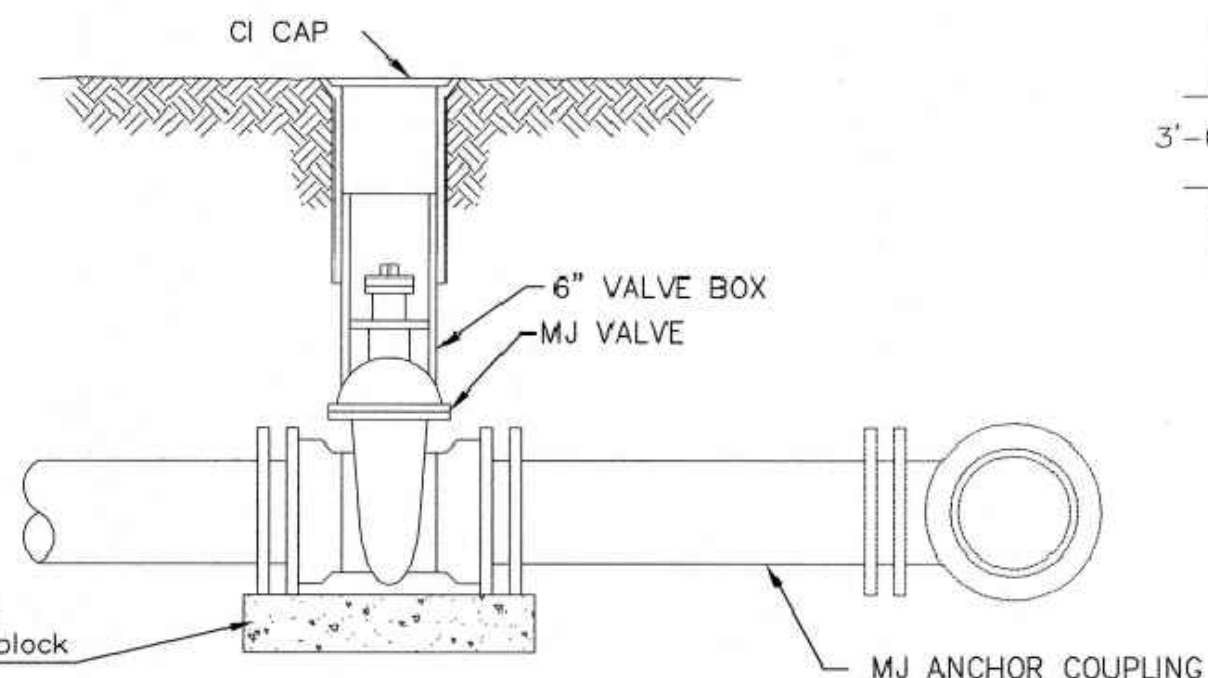
COST IS SUBSIDIARY TO PIPE INSTALLATION

FIRE HYDRANTS REQUIRED				
STATION	BURY LINE ELEVATION	TOP OF PIPE ELEVATION	FIRE HYDRANT BURY REQUIRED*	VALVE STEM EXT. REQUIRED (ft)*
3+03.54	1306.10	1302.25	4.5'	-
	1306.3	1301.8		

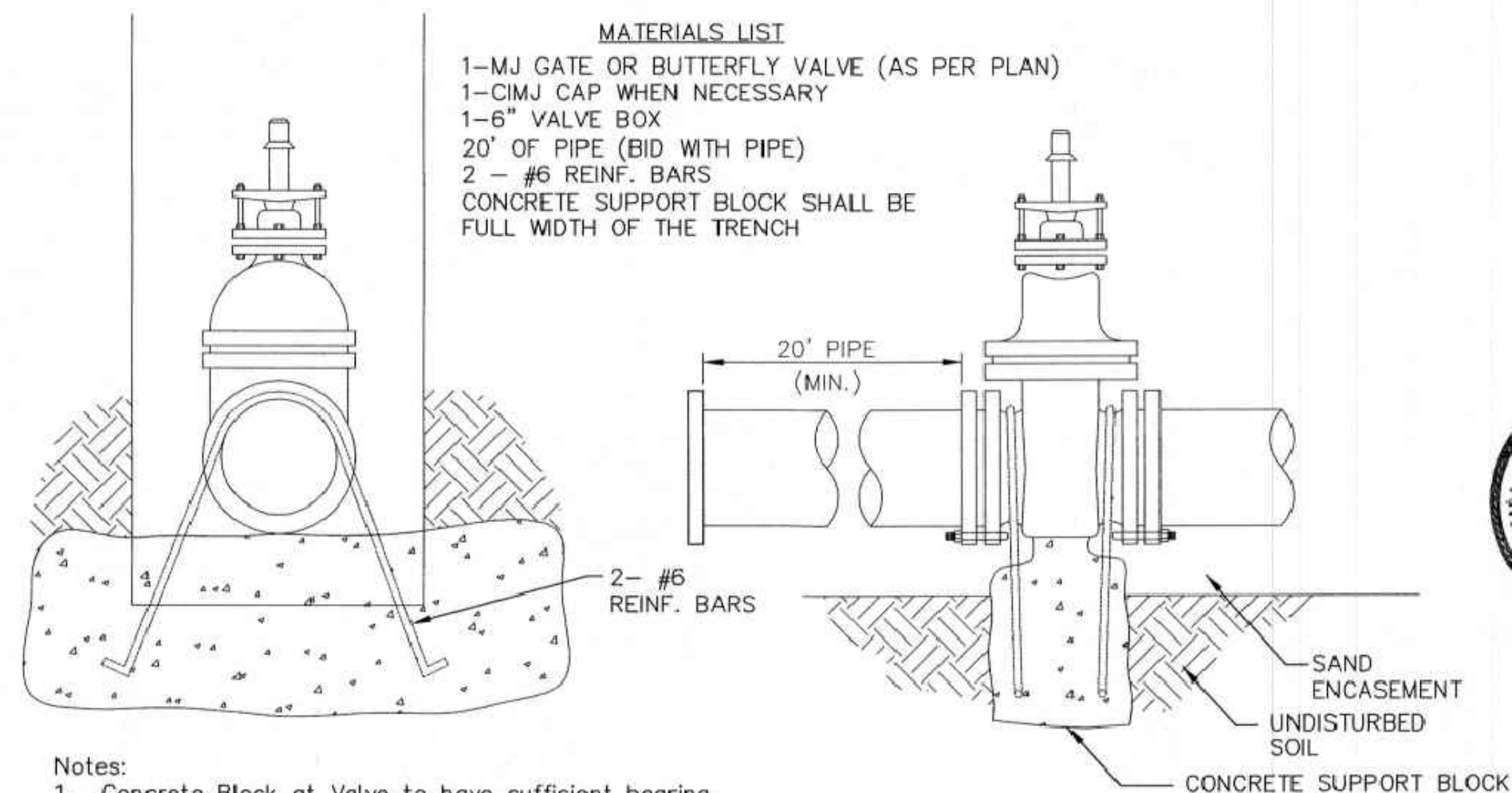


- MATERIALS LIST**
- 1- MJ GATE OR BUTTERFLY VALVE (AS PER PLAN)
 - 1- 6" VALVE BOX
 - 2'- DI CL SJ PIPE

- MATERIALS LIST**
- 1-MJ GATE OR BUTTERFLY VALVE (AS PER PLAN)
 - 1-MJ ANCHOR COUPLING (12" OR SMALLER)
 - 1-6" VALVE BOX
 - CONCRETE SUPPORT BLOCK SHALL BE FULL WIDTH OF THE TRENCH



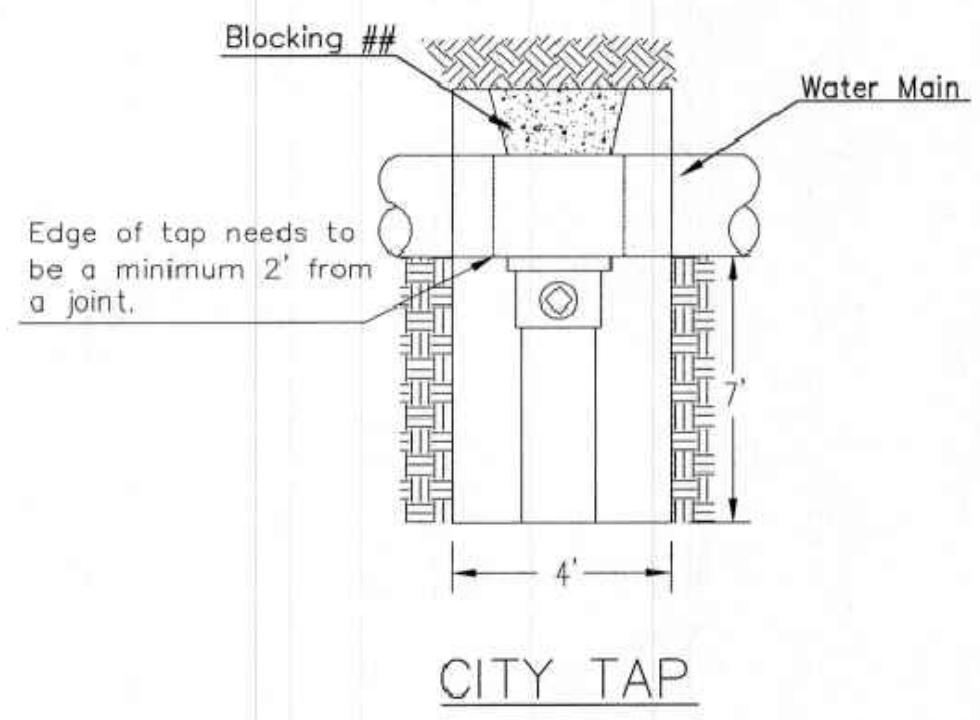
ANCHORED VALVE ASSEMBLY



- Notes:
- Concrete Block at Valve to have sufficient bearing in undisturbed soil to prevent thrust movement as shown in table at right. Field Engineer to determine thrust loading of undisturbed soil and final size of thrust block.
 - The thrust block shall be constructed such that bolts, nuts, and other MJ accessories are kept clear of concrete.
 - All valves at dead ends and at other locations as called out on the plans shall be blocked as shown here.

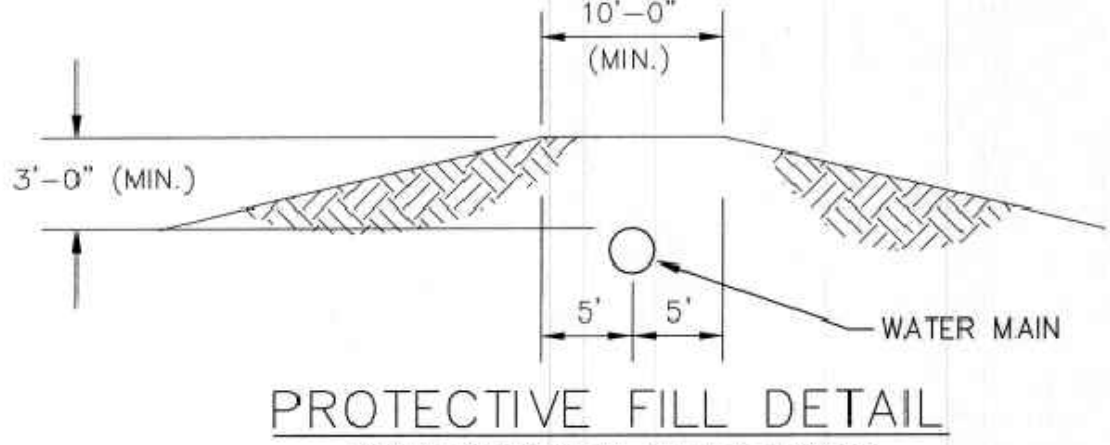
THRUST AT VALVES	
VALVE	THRUST AT 150 #/sq2
4"	1809 lbs.
6"	4245 lbs.
8"	7540 lbs.
12"	16965 lbs.

ANCHORED VALVE ASSEMBLY, SPECIAL



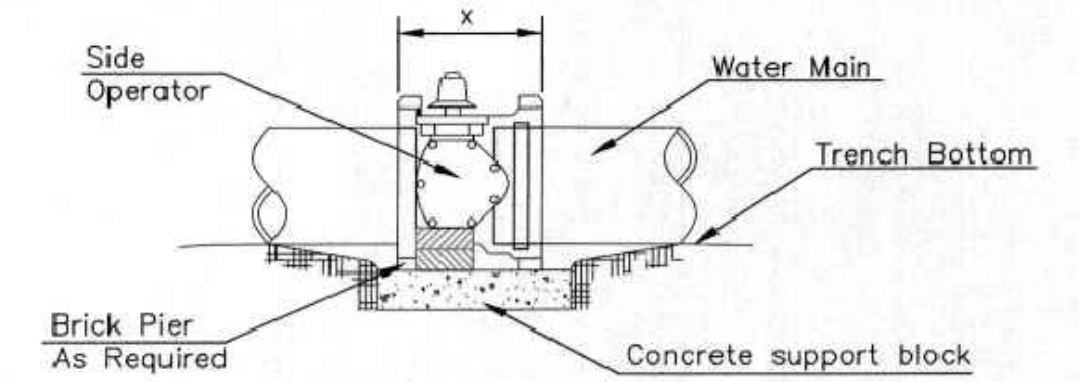
When the City of Wichita makes tap, blocking is to be done by Contractor

CITY TAP



PROTECTIVE FILL DETAIL

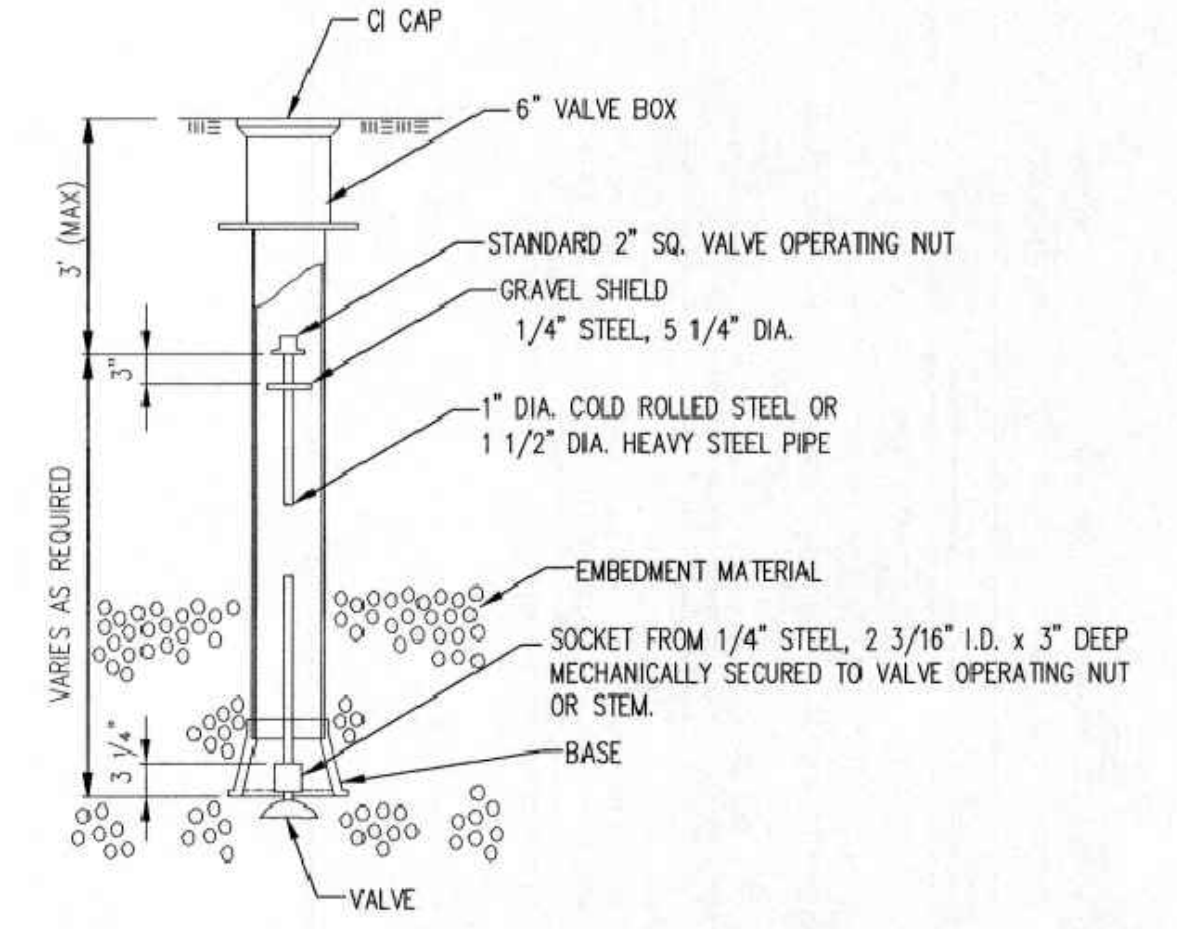
MINIMUM PROTECTIVE FILL SHALL BE PROVIDED IN ALL INSTANCES WHERE COVER OVER THE PROP. WATER LINE IS LESS THAN 3'. (COST SUBSIDIARY TO PIPE INSTALLATION)



NOTES

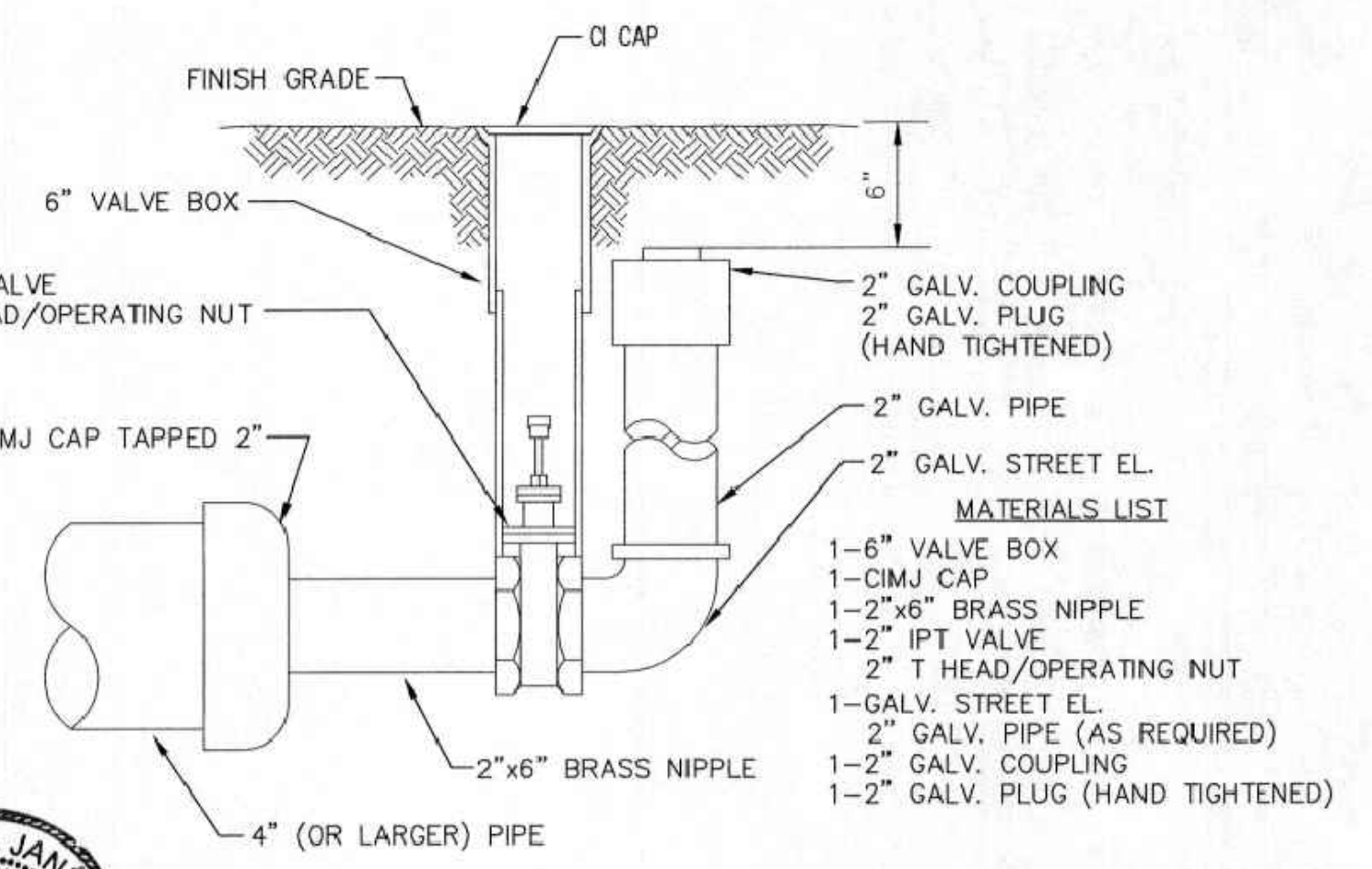
- This detail covers Butterfly Valve installation, inclusive, regardless of type of pipe or joint used. 24" and larger lines to be detailed on plans.
- 6" Valve Box and Cover required per City of Wichita Std. Specifications.
- Conc. Support Block to be full width of trench.

CONCRETE SUPPORT BLOCKING FOR BUTTERFLY VALVE INSTALLATION



VALVE STEM EXTENSION DETAIL

NOTE: ONE VALVE STEM EXTENSION FOR EACH VALVE BURIED GREATER THAN 5'.



2" BLOWOFF ASSEMBLY

STANDARD WATER ASSEMBLY DETAIL

CITY ENGINEER
GARY JANZEN, P.E.

PROJECT NUMBER	OCA NUMBER	DATE
----------------	------------	------

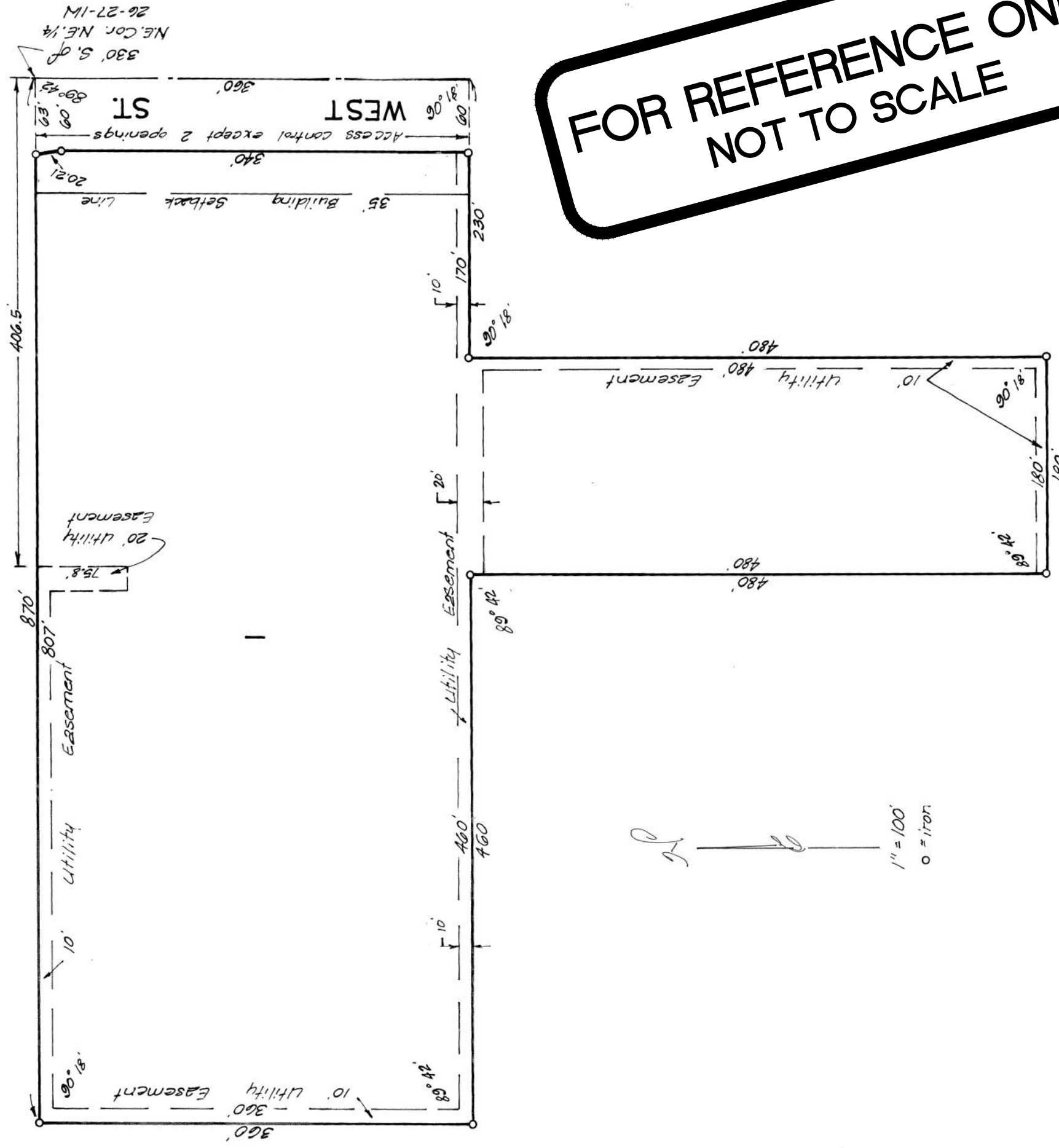
CITY ENGINEER'S OFFICE
CITY HALL - SEVENTH FLOOR
455 NORTH MAIN STREET
WICHITA, KANSAS 67202-1620
(316) 268-4501

SHEET
4 of 11

REVISED: OCTOBER 2016

STAR LUMBER COMPANY 5TH ADDITION

WICHITA KANSAS



**FOR REFERENCE ONLY
NOT TO SCALE**

State of Kansas } ss. We, Baughman Company, Surveyors in aforesaid county and Sedgwick County, } ss. do hereby certify, that we have surveyed and platted "STAR LUMBER COMPANY 5TH ADDITION," Wichita, Kansas, and that the accompanying plat is a true and correct exhibit of the property surveyed described as and being a replat of Lots 1-2-3 and 4, Star Lumber Company 3rd Addition, Wichita, Kansas, together with all of West Street as dedicated on said Star Lumber Company 3rd Addition, and the N½ of Lots 1-2-3 and 4, N.E. Rich Addition, Wichita, Kansas. The street is being vacated by virtue of K.S.A. 10-20 Supp. 12-312(b).

11/19/77
Date
William L. Korber
Registered Professional Land Surveyor
LS-35
KANSAS
Baughman Company
Surveyor

Know all men by these presents that we, the undersigned, have lot and a street to be known as "STAR LUMBER COMPANY 5TH ADDITION," Wichita, Kansas. The easements are hereby granted as indicated for the construction and maintenance of all public utilities. The street is hereby dedicated to and for the use of the public. All abutters rights of access to or from West St. over and across the east line of Lot 1 is hereby granted the City of Wichita, provided however that Lot 1 shall have access to West St. at 2 points to be determined by the city engineer of the City of Wichita, Kansas.

Star Lumber and Supply Company, Inc.
William J. Goebel
President
Mary Ann Cravens
Secretary

State of Kansas } ss. Be it remembered that on this 11th day of January Sedgwick County, } ss. before me a notary public in aforesaid county and state came William J. Goebel, President and Mary Ann Cravens, Secretary of Star Lumber and Supply Company, Inc., to me known to be the same persons who executed the foregoing instrument of writing and duly acknowledge the execution of the same. In testimony whereof, I have hereunto set my hand and affixed my notarial seal the day and year above written.

My Comm. Exp. June 24, 1978
Ronald M. Brummel
Notary Public

This plat of "STAR LUMBER COMPANY 5TH ADDITION," Wichita, Kansas, has been submitted to and approved by the Wichita-Sedgwick County Metropolitan Area Planning Commission, Wichita, Kansas.

Dated this 23rd day of December, 1977.

Wichita-Sedgwick County Metropolitan Area Planning Commission

Donald E. Dragg
Donald E. Dragg
Vice-Chairman
Robert A. Galvin
Robert A. Galvin
Secretary

This plat approved and all dedications shown hereon, accepted by the Board of Commissioners of the City of Wichita, Kansas, this 15th day of February, 1977.

James M. Connel
James M. Connel
Mayor
Charles P. Guind
Charles P. Guind
City Clerk

This plat approved and all dedications shown hereon accepted by the Board of Commissioners, Sedgwick County, Kansas, this 15th day of March, 1977.

Don Scott
Don Scott
Chairman
John Hale
John Hale
Commissioner
Everett F. Patrick
Everett F. Patrick
Commissioner
A Dorothy K. White
A Dorothy K. White
County Clerk

Entered on transfer record this 16 day of March, 1977.

A Dorothy K. White
A Dorothy K. White
County Clerk

State of Kansas } ss. This is to certify that this plat Sedgwick County, } ss. was filed for record in the office of the Register of Deeds this 6 day of March, 1977, at 12:00 o'clock P.M. and is duly recorded

#319312
Bette F. McPart
Bette F. McPart
Register of Deeds
Pat Kattler
Pat Kattler
Deputy

We, the undersigned holders hereby consent to this plat of "STAR LUMBER COMPANY 5TH ADDITION," Wichita, Kansas.

Union National Bank
Attest:
Richard J. Custine
Richard J. Custine
Vice President
Margaret B. Henning
Margaret B. Henning
Asst. Cashier

State of Kansas } ss. Be it remembered that on this Sedgwick County, } ss. day of January, 1977, before me a notary public in aforesaid county and state came Richard J. Custine, Vice President and Margaret B. Henning, Asst. Cashier of Union National Bank to me known to be the same persons who executed the foregoing instrument of writing and duly acknowledged the execution of the same. In testimony whereof, I have hereunto set my hand and affixed my notarial seal the day and year above written.

My Comm. Exp. 11-19-77
Dorothy K. White
Dorothy K. White
Notary Public

BAUGHMAN COMPANY
315 Ellis St.
Wichita, KS 67211
316-262-7271
BaughmanCo.com

STAR LUMBER HEADQUARTERS

COPY OF PLAT

WATER DISTRIBUTION SYSTEM

PROJECT NUMBER: 23-01-E419

DESIGN: DRAWN:
DATE: June 29, 2023

SHEET 11 OF 11