

SHEET 001 OF 018
 PLOT DATE: 8/1/2024 11:47:54 AM
 FILE PATH: J:\PROJECTS\2023\2301010057_GLMV_WSU_NIAR_TB100_230057_CAD\SHS\DWG\CIVIL\WTR\2301010057_WATER_TITLEDWG

PROJECT: 2301010057_GLMV_WSU_NIAR_TB100_230057_CAD\SHS\DWG\CIVIL\WTR\2301010057_WATER_TITLEDWG

GENERAL NOTES

- THE CONTRACTOR SHALL COMPLY WITH ALL APPLICABLE SAFETY REGULATIONS. ALL CONSTRUCTION SHALL BE COMPLETED FOLLOWING CURRENT CITY STANDARD SPECIFICATIONS AND SPECIAL PROVISIONS.
- CONTRACTOR WILL BE REQUIRED TO PROVIDE NOTICE TO UTILITY COMPANIES A MINIMUM OF SEVENTY-TWO (72) HOURS PRIOR TO ANY EXCAVATION. AS FOLLOWS:
 KANSAS ONE-CALL 687-2470
 THE CONTRACTOR MUST NOTIFY THE FOLLOWING IN CASE OF AN EMERGENCY:
 AT&T 1-800-248-8484
 BLACK HILLS ENERGY (GAS) 1-800-694-8989
 CITY OF WICHITA WATER & SEWER 1-316-219-8521
 CITY OF WICHITA STORMWATER 1-316-268-4000
 CITY OF WICHITA TRAFFIC 1-316-268-4034
 COX COMMUNICATIONS 1-888-249-3530
 KANSAS GAS SERVICE 1-888-452-4950
 EVERGY 1-800-544-4857
- UTILITY SERVICE LINES, POLES, ETC. ARE TO BE ADJUSTED AS NECESSARY BY OTHERS PRIOR TO CONSTRUCTION UNLESS THE PLANS SPECIFICALLY CALL FOR THEIR ADJUSTMENT BY THE CONTRACTOR OR UNLESS THE PLANS SPECIFICALLY IDENTIFY A UTILITY TO BE ADJUSTED BY ITS OWNER DURING CONSTRUCTION. EXISTING UTILITIES AND THEIR LOCATION, AS SHOWN ON THE PLANS, REPRESENT THE BEST INFORMATION OBTAINABLE FOR DESIGN. THE CONTRACTOR WILL BE REQUIRED TO WORK AROUND EXISTING UTILITIES WITHIN THE RIGHT-OF-WAY WHICH DO NOT CONFLICT WITH PROPOSED CONSTRUCTION.
- RUBBLE FROM THE REMOVAL OF MISCELLANEOUS STRUCTURES AND EXCESS EXCAVATION WHICH IS TO BE WASTED SHALL BE DISPOSED OF ON SITES TO BE PROVIDED BY THE CONTRACTOR. THESE SITES SHALL BE APPROVED BY THE ENGINEER AS TO SUITABILITY, APPEARANCE AND SITE LOCATION. LOCATIONS, IN THE OPINION OF THE ENGINEER, THAT WILL LEAVE AN UNSIGHTLY APPEARANCE WILL NOT BE APPROVED. ALL DISPOSAL SITES MUST BE APPROVED BY THE KANSAS DEPARTMENT OF HEALTH AND ENVIRONMENT. MATERIAL EITHER STOCKPILED OR DISPOSED OF IN A FLOOD PLAIN WILL REQUIRE A KANSAS STATE BOARD OF AGRICULTURE PERMIT. ANY MATERIAL DUMPED IN WATERS OF THE UNITED STATES OR WETLANDS IS SUBJECT TO U.S. CORPS OF ENGINEERS PERMITTING REGULATIONS. ANY MATERIAL BURIED OR STOCKPILED BEYOND APPROVED CONSTRUCTION LIMITS WILL REQUIRE ADDITIONAL ARCH-HEOLOGICAL INVESTIGATIONS UNLESS BURIED IN A PREVIOUSLY APPROVED BORROW LOCATION.
- TREES AND SHRUBS IN PUBLIC RIGHT-OF-WAY WHICH ARE IN DIRECT CONFLICT WITH PROPOSED NEW CONSTRUCTION SHALL BE REMOVED BY THE CONTRACTOR WITH THE CITY ENGINEER'S APPROVAL. TREES AND SHRUBS WHICH ARE NOT IN DIRECT CONFLICT WITH PROPOSED NEW CONSTRUCTION SHALL BE SAVED AND PROTECTED FROM DAMAGE.
- THE CONTRACTOR SHALL GIVE ALL PROPERTY OWNERS AND/OR TENANTS OF DEVELOPED PROPERTY ADJUTING THE CONSTRUCTION OF THIS PROJECT A MINIMUM OF TEN (10) DAYS NOTICE PRIOR TO START OF CONSTRUCTION.
- THE CONTRACTOR SHALL BE RESPONSIBLE FOR PRESERVING PROPERTY IRONS. THE CONTRACTOR WILL BE REQUIRED TO RE-ESTABLISH ANY PROPERTY IRONS WHICH ARE DAMAGED OR DESTROYED BY HIS CONSTRUCTION OPERATIONS. SUCH IRONS SHALL BE RE-ESTABLISHED BY A LICENSED LAND SURVEYOR IN ACCORDANCE WITH STATE LAWS.
- THE ENGINEERING DIVISION SHALL FIELD LOCATE WATER VALVES ONE TIME DURING CONSTRUCTION WHEN REQUESTED BY THE CONTRACTOR. IT SHALL BE THE CONTRACTOR'S RESPONSIBILITY TO PRESERVE SUCH FIELD LOCATIONS DURING THE CONSTRUCTION PROCESS. WATER VALVES, VALVE BOXES OR FIRE HYDRANTS DAMAGED DURING CONSTRUCTION SHALL BE REPAIRED BY CONTRACTOR AT HIS OWN EXPENSE. VALVE BOXES AND WATER METERS WITHIN THE PROJECT LIMITS SHALL BE ADJUSTED TO MATCH FIELD GRADES BY THE CONTRACTOR.
- THE CONTRACTOR SHALL NOTIFY THE INSPECTING ENGINEER AND DAWNITA REINHARDT AT 650-0740 WITH THE CITY OF WICHITA WITH THE ANTICIPATED CONSTRUCTION START DATE AND NOTIFY THEM OF PROJECT COMPLETION, STAKING AND INSPECTION FOR THIS PROJECT WILL BE THE RESPONSIBILITY OF THE CONTRACTOR.
- IF TRAFFIC WILL BE IMPACTED BY CONSTRUCTION, A TRAFFIC CONTROL PLAN MUST BE SUBMITTED AND APPROVED BY THE CITY TRAFFIC ENGINEER AT traffic@wichita.gov BEFORE CONSTRUCTION CAN BEGIN. THE CONTRACTOR SHALL BE RESPONSIBLE FOR ALL TRAFFIC CONTROL MEASURES. FACILITATE CONSTRUCTION. ALL CONSTRUCTION ZONE MARKINGS AND SIGNAGE SHALL CONFORM TO THE LATEST VERSION OF THE MANUAL ON UNIFORM TRAFFIC CONTROL DEVICES (MUTCD) AS PUBLISHED BY THE US DEPT. OF TRANSPORTATION, FEDERAL HIGHWAY ADMINISTRATION. ALL COSTS ASSOCIATED WITH CONSTRUCTION MARKINGS AND SIGNAGE SHALL BE THE CONTRACTOR'S RESPONSIBILITY.
- ALL ELEVATIONS SHOWN ARE NAVD 88.
- ALL AREAS DISTURBED DURING CONSTRUCTION THAT WILL NOT BE UNDER PROPOSED PAVEMENT SHALL BE RESTORED TO MATCH EXISTING CONDITIONS.
- ANY SIDEWALK, DRIVE APPROACH, CURB, OR STREET PAVEMENT REMOVED TO CONSTRUCT PROJECT MUST HAVE A PAVEMENT CUT PERMIT AND BE REPLACED BY CITY CONTRACTOR. PERMITS CAN BE OBTAINED BY CALLING 316-268-4501 OR 316-268-4480.
- ALL APPLICABLE FEES (TAP, EQUITY, IN LIEU OF A MAIN BENEFIT) MUST BE PAID BEFORE ANY CONNECTIONS CAN BE MADE ON THIS PROJECT. QUOTES CAN BE OBTAINED ON FEES BY CALLING 316-268-4555.
- CITY MAINTENANCE OF WATER MAINS ENDS AT RIGHT-OF-WAY OR EASEMENT LINE OR WITHIN TWO FEET OF VAULT.
- MAINTAIN A MINIMUM OF 10'-0" HORIZONTAL SEPARATION BETWEEN ALL WATER LINES (MANS, SERVICES, AND FIRE HYDRANTS) AND ALL SANITARY SEWER LINES (MANS, SERVICES, AND MANHOLES). ALL SEPARATION DISTANCES ARE TO BE MEASURED FROM EDGE-TO-EDGE, AT THE CLOSEST POINT.
- MAINTAIN A MINIMUM OF 2'-0" VERTICAL SEPARATION BETWEEN ALL WATER LINES (MANS AND SERVICES) AND ALL GRAVITY SANITARY SEWER LINES (MANS, SERVICES, AND MANHOLES). ALL SEPARATION DISTANCES ARE TO BE MEASURED FROM EDGE-TO-EDGE, AT THE CLOSEST POINT.
- MAINTAIN A MINIMUM OF 2'-0" VERTICAL SEPARATION BETWEEN ALL WATER LINES (MANS AND SERVICES) AND ALL PRESSURIZED SANITARY SEWER LINES WHERE THEY CROSS. ALL SEPARATION DISTANCES ARE TO BE MEASURED FROM EDGE-TO-EDGE, AT THE CLOSEST POINT.
- CONTRACTOR SHALL LIMIT THE EXTENT OF TRENCH OPEN OVERNIGHT AND WEEKENDS TO LESS THAN 50 FEET.
- EXISTING UTILITIES AND THEIR LOCATION, AS SHOWN ON THE PLANS REPRESENT THE BEST INFORMATION OBTAINABLE FOR DESIGN. LOCATION INFORMATION HAS BEEN OBTAINED FROM THE VARIOUS COMPANIES AND IS EITHER FROM COMPANY UTILITY DRAWINGS OR COMPANY PROVIDED FIELD LOCATIONS. THE PLAN LOCATIONS SHOWN ARE NOT GUARANTEED. ADDITIONAL EXISTING UTILITIES MAY ALSO BE ENCOUNTERED.
- OPENING AND CLOSING OF WATER VALVES SHALL BE DONE SLOWLY TO PREVENT DAMAGE TO THE WATER DISTRIBUTIONS SYSTEM FROM WATER HAMMER. ALL VALVES CLOSED BY THE CONTRACTOR MUST BE REOPENED AS NEW CONSTRUCTION PERMITS. THE PROJECT INSPECTOR MUST ASCERTAIN THAT ANY VALVE CLOSED BY THE CONTRACTOR IS REOPENED. THE CONTRACTOR WILL BE PERMITTED TO OPERATE WATER VALVES ONLY WHEN THE PROJECT INSPECTOR ASSIGNED TO THE PROJECT IS PRESENT.
- THE CONTRACTOR SHALL LAY A TRACER WIRE AND SET TEST STATIONS ALONG ALL WATER PIPE INSTALLED IN ACCORDANCE WITH CITY SPECIFICATIONS AND TRACER WIRE DETAIL ON DETAIL SHEET W6-101. COST IS SUBSIDIARY TO PIPE INSTALLATION.
- THE CONTRACTOR SHALL PROVIDE MATERIALS FOR TEMPORARY BLOWOFF OF WATERLINES. CONNECTIONS TO THE EXISTING WATERLINE(S) SHALL BE MADE WITH CLEAN, SWABBED PIPE AND FLUSHED UPON COMPLETION OF TIE-INS.
- REQUESTS FOR SHORT TERM WATER INTERRUPTIONS SHALL BE MADE TO THE CITY WATER DISTRIBUTION DIVISION AND WILL BE SUBJECT TO THEIR APPROVAL. THE CONTRACTOR SHALL GIVE WRITTEN NOTICE TO ANY PROPERTY OWNER, BUSINESS, AND/OR TENANTS THAT WILL HAVE WATER SERVICE INTERRUPTED AT LEAST 5 DAYS IN ADVANCE. SUCH NOTIFICATIONS SHOULD INDICATE THE TIME AND DATE THAT THE WATER WILL BE TURNED OFF AND WHEN THE SERVICE WILL BE RESTORED. NO BUSINESS, PROPERTY OWNER, AND/OR TENANTS SHALL BE WITHOUT WATER SERVICE FOR MORE THAN 8 HOURS, PROPOSED TIE IN LOCATIONS WHICH WILL AFFECT WATER SERVICE TO PROPERTY OWNERS SHALL BE PERFORMED DURING NON-PEAK HOURS.
- THE CONTRACTOR MUST SCHEDULE THE CONNECTIONS TO THE EXISTING MAIN WITH THE CITY SUCH THAT THERE IS A MINIMUM DISRUPTION OF SERVICE. CONNECTIONS SHALL BE MADE DURING PERIODS OF LOW WATER USAGE. THE CONTRACTOR SHALL SUBMIT HIS PROPOSED SCHEDULE FOR COMPLETING WORK FOR CITY APPROVAL AT LEAST 10 DAYS PRIOR TO BEGINNING CONSTRUCTION.
- DEFLECTIONS AT PIPE JOINT OR COUPLINGS SHALL NOT EXCEED THE PIPE MANUFACTURERS RECOMMENDED MAXIMUM, WHERE DEFLECTIONS ARE GREATER THAN THE MAXIMUM ALLOWED, THE CONTRACTOR SHALL UTILIZE CMJ LONG SLEEVE OR MULTIPLE JOINTS.
- ANY EXISTING JOINT EXPOSED DURING EXCAVATION SHALL BE REPLACED IF WITHIN FOUR FEET OF PROPOSED JOINT.
- VALVES 12 INCH AND LARGER ARE TO BE OPERATED BY THE CITY WATER DISTRIBUTION DIVISION, 48 HOURS OF ADVANCE NOTICE IS REQUIRED WITH THE WATER DISPATCH AT 316-291-8921.
- ALL WET TAPS SHALL BE INSTALLED BY THE CITY OF WICHITA. THE CONTRACTOR WILL REIMBURSE THE CITY FOR TAPPING FEES.
- THE CONTRACTOR SHALL PROTECT FROM DAMAGE AND SUPPORT EXISTING UTILITIES THROUGH CONSTRUCTION AS APPROVED BY THE UTILITY OWNER AND THE ENGINEER AT THE CONTRACTOR'S EXPENSE.
- WORK DONE UNDER THIS PROJECT IS SUBJECT TO THE CITY OF WICHITA REQUIREMENTS FOR CONSTRUCTION OF INFRASTRUCTURE IMPROVEMENTS BY PRIVATE CONTRACTOR. THE CONTRACTOR SHALL BE FAMILIAR AND COMPLY WITH ALL OF THE REQUIREMENTS, INCLUDING BONDING, INSPECTION, TESTING, NOTIFICATION, PROVIDING AS-BUILT DRAWINGS, PAYING FOR ALL NECESSARY CONNECTIONS, AND/OR STREET REPAIR FEES AND PROVIDING PIPE MATERIAL AND OTHER CERTIFICATIONS.
- DEVELOPERS FOR THIS PROJECT IS:
 WICHITA STATE UNIVERSITY
 1845 FAIRMOUNT ST.
 WICHITA, KS 67260
 EMILY PATTERSON
 316-978-3444

PRIVATE WATER DISTRIBUTION SYSTEM IMPROVEMENTS

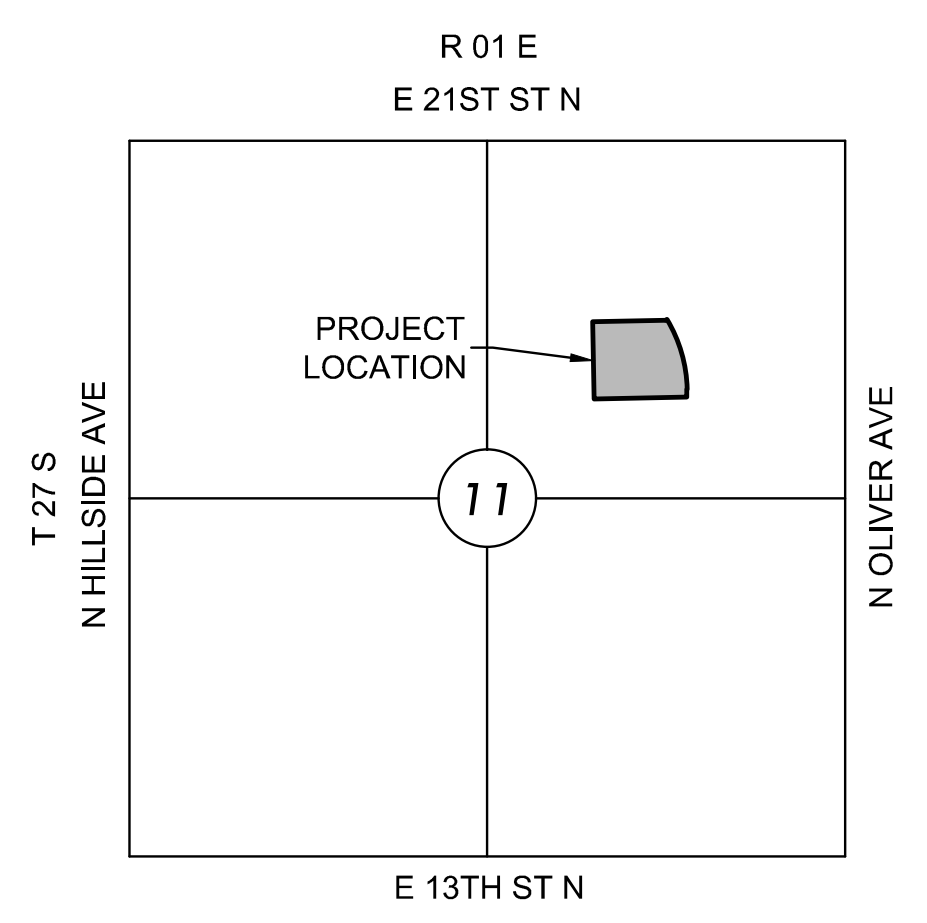
TO SERVE

WSU NIAR - HAMR

THE CITY OF WICHITA, KANSAS 1907 Innovation Blvd
 PAUL GUNZELMAN, P.E. - CITY ENGINEER

PROJECT NO. 2023-040849PPW
 ORG CODE 54030980

AS BUILT PLANS
 CONTRACTOR: MIES CONSTRUCTION
 SUPERINTENDENT: DALLAS MIES
 FOREMAN: JESUS MARTINEZ
 CLIENT: CITY OF WICHITA
 INSPECTOR: ROSS POWERS
 INSPECTION FIRM: SCHWAB-EATON, PA.
 PDF BY: RJP 09/19/2024

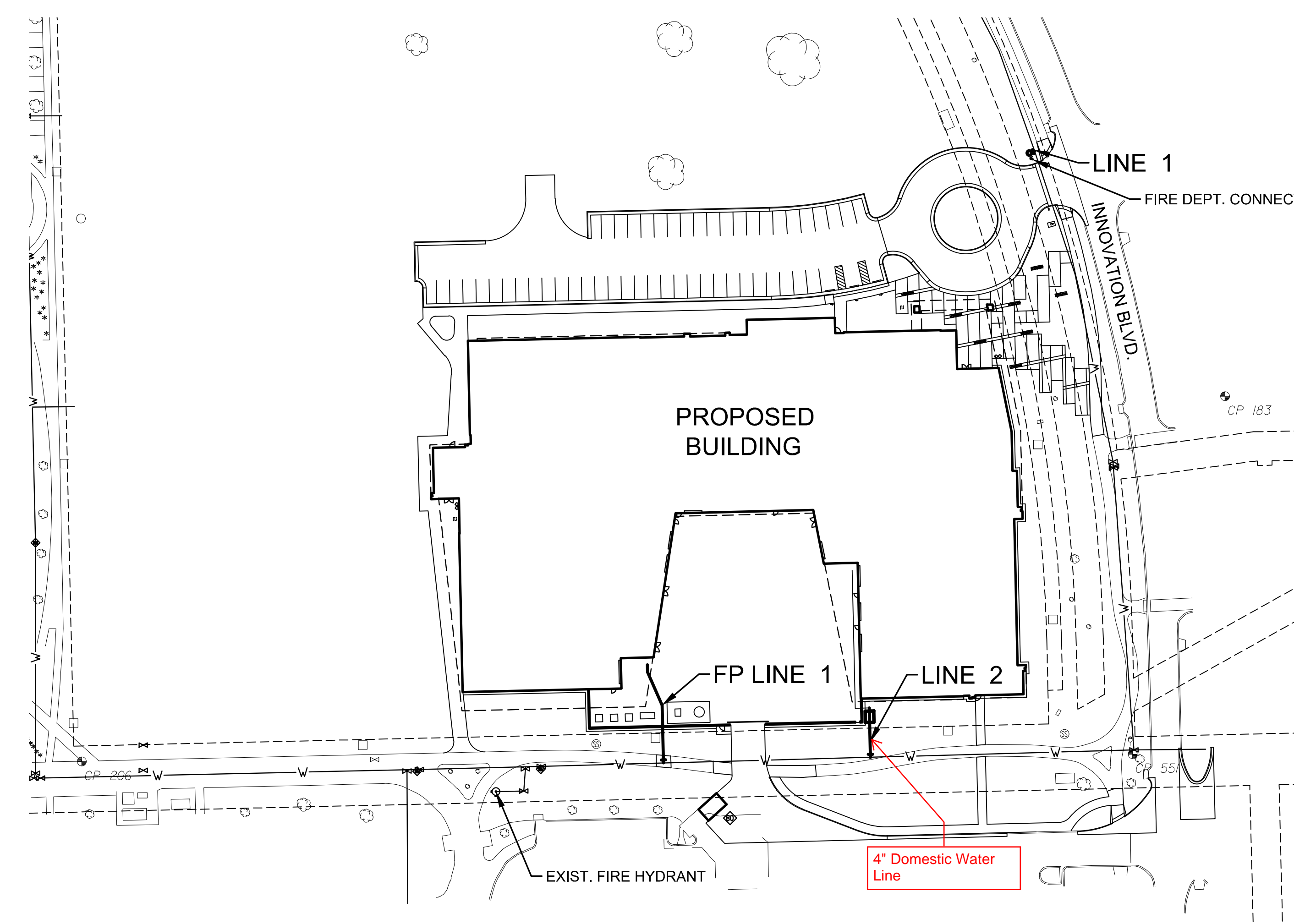
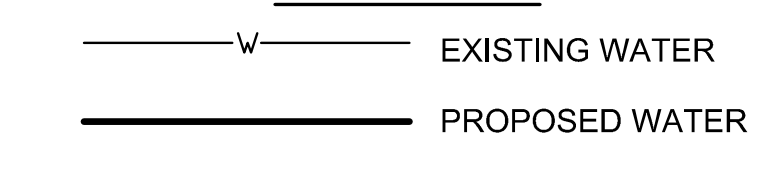


VICINITY MAP
 No Scale

INDEX TO DRAWINGS

SHEET NO.	DESCRIPTION
1	TITLE SHEET
2-4	WTR DETAILS
5	LINE 1 & 2
6	FIRE PROTECTION LINE 1
7	BUBBLE MAP
8-12	BMP DETAILS
C-500	EROSION CONTROL PLAN

LEGEND



DATUM

The Horizontal Datum is based on the Kansas Coordinate System of 1983, NAD83(2011), EPOCH 2010.0000, South Zone. Coordinates shown have been modified to the ground using a combined adjustment factor of 1.0001200144. State Plane coordinates can be calculated by multiplying the shown values by 0.99998.

The Vertical Datum is based on the NAVD 88 datum, Geoid18.

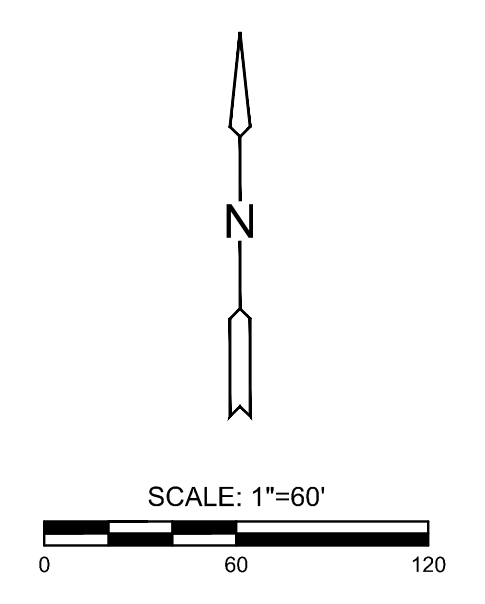
CONTROL POINTS

PT	NORTH	EAST	ELEV	DESCRIPTION
168	1698347.3045	1663816.6028	1413.665	Chisled "X"
170	1698109.2299	1663984.1189	1409.315	Chisled "X"
183	1697732.5582	1664113.4839	1409.465	Chisled "X"
206	1697483.4043	1663333.9334	1408.775	Chisled "X"
207	1698095.6568	1663304.6989	1410.645	MAG-nail
551	1697488.4069	1664050.5294	1409.875	5\"/>

NOTE

All Control Points shown have elevations established using standard surveying procedures and can be used as temporary benchmarks. When using a Control point as a temporary benchmark, it is recommended that cross-checks be made to other control points or benchmarks to confirm elevations prior to use.

NOTE:
 WATER LINE VALVES TO BE OPERATED BY CONTRACTOR ONLY IF WATER INSPECTOR IS ON SITE.



APPROVED AS NOTED
 BY WICHITA PUBLIC WORKS
 ENGINEERING DIVISION
 & BY WICHITA FIRE DEPARTMENT

Engineering approved by Shawn Melles on 04/24/24
 Utilities approved by Greg Lolley on 04/24/24
 Fire Department approved by Jose Ocaidz on 04/24/24

NOTE TO CONTRACTORS

Public Property:
 Inspection and testing for the water line is to be provided by a Licensed Consulting Engineering Firm under contract with the Owner/Developer. Said inspection to be in accordance with the City of Wichita standard construction engineering practices and certified by a Professional Engineer Licensed in the state of Kansas. No work shall be performed in dedicated easements or public rights-of-way by the Contractor without such inspection nor shall any work be commenced without written authorization by the City Engineer. All Construction and Materials shall comply with the City of Wichita Specifications and Standards and Special Provision (on file and available in the City Engineer's office) or on the City's Website.

Private Property:
 Installation and testing for the fire protection line is to be performed by a City of Wichita licensed fire protection contractor in accordance with the fire codes as adopted by the City of Wichita. All material and construction practices for the fire protection line shall comply with the fire codes as adopted by the City of Wichita (available from the City of Wichita Fire Department). The contractor shall not commence work without notification and approval of the Wichita Fire Department. Inspection of the fire protection line is to be provided by a licensed Engineering Firm under contract with the Owner/Developer and the Fire Department. The contractor shall not start work until the project inspector is assigned to the project and present on the site. Any work done without inspection will be required to be uncovered for inspection.

An approved copy of these plans signed by City staff is required on-site.

NOTE: ALL LINES TO BE INSTALLED BY OTHERS ARE SUBJECT TO MABCO REVIEW.

NOTE: CONTRACTOR TO VERIFY DEPTH AND LOCATION OF EXISTING UTILITIES PRIOR TO CONSTRUCTION.

©2024
 MKEC Engineering
 All Rights Reserved
 www.mkec.com
 These drawings and their contents, including but not limited to, all concepts, designs, & ideas are the exclusive property of MKEC Engineering (MKEC) and may not be used or reproduced in any way without the express consent of MKEC.

WATER TITLE SHEET

PROJECT NO.	2023-040849PPW	
DATE	01/22/2024	
SCALE	AS NOTED	
DESIGNED	DRAWN	CHECKED
SPE	BKS	SPE
NO.	REVISION	DATE
SHEET NO. 1 OF 12		

PRIVATE WATER DISTRIBUTION PLANS FOR
WSU NIAR - HAMR
 WICHITA, KS



LOCATION OF FITTINGS AT STA 10+00 TO 00+67.52 MEASURED FROM CENTER OF INTERSECTION AT 18TH STREET AND INNOVATION BLVD.:

STA. 10+00 LINE 1		
12" X 6" TAP	247.5' N.	100.8' W
1-6" GATE VALVE	247.5' N.	101.8' W
1-6" ANCHORED COUPLING	247.5' N.	102.8' W
1-6" 90 DEG. BEND	247.5' N.	102.8' W
1-6" 90 DEG. BEND	247.5' N.	102.8' W
FIRE HYDRANT ASSY	247.5' N.	105.8' W

SUMMARY TABLE

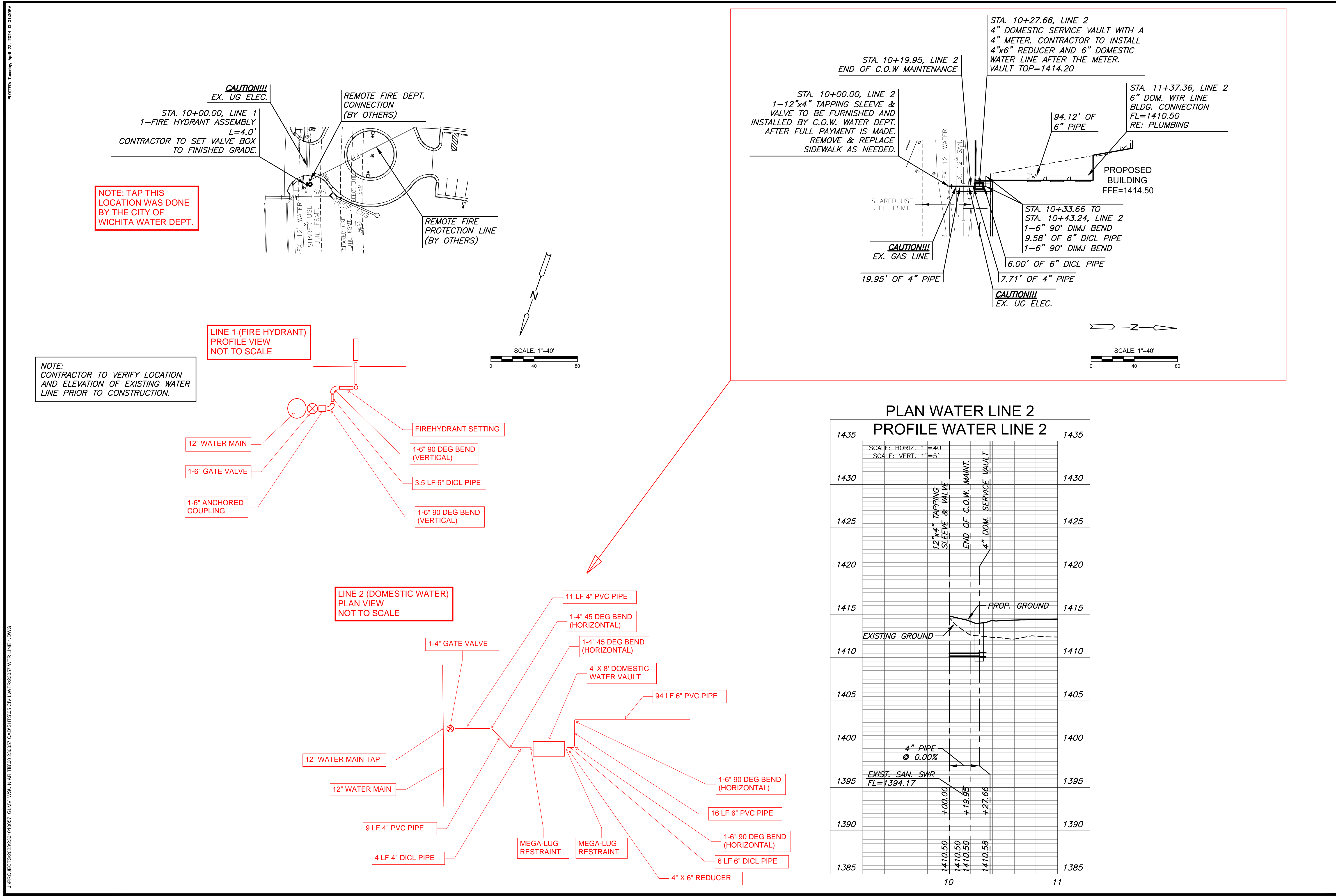
ITEM	TYPE	MANUFACTURER	QTY
6" DICL PIPE	DUCTILE IRON PIPE	AMERICAN CAST IRON PIPE	3.5 LF.
6" DIMJ 90 BEND	DICL (C151)	SIP PIPE PRODUCTS	2 EA
6" ANCHORED COUPLING	DICL (C151)	SIP PIPE PRODUCTS	1 EA
6" GATE VALVE	DICL (C151)	SIP PIPE PRODUCTS	1 EA
6" PIPE RESTRAINTS	DICL (C151)	STAR PIPE PRODUCTS	2 EA

LOCATION OF FITTINGS AT STA 10+00 TO 11+67.52 MEASURED FROM CENTER OF INTERSECTION AT 18TH STREET AND INNOVATION BLVD.:

STA. 10+00 LINE 1		
12" X 4" TAP	165' S.	218.8' W.
1-4" GATE VALVE	164' S.	218.8' W.
1-4" 45 DEG. BEND	154' S.	218.8' W.
1-4" 45 DEG. BEND	144' S.	212.3' W
4' X 8' DOMESTIC WATER VAULT	140' S.	212.3' W
1-6" 90 DEG. BEND	128' S.	212.3' W
1-6" 90 DEG. BEND	128' S.	228.3' W

SUMMARY TABLE

ITEM	TYPE	MANUFACTURER	QTY
4" PVC PIPE	DR C900	AMERICAN IRON PIPE	20 L.F.
4" DICL PIPE	DUCTILE IRON	AMERICAN IRON PIPE	4 L.F.
6" PVC PIPE	DR C900	AMERICAN IRON PIPE	110 L.F.
6" DICL PIPE	DUCTILE IRON	AMERICAN IRON PIPE	6 L.F.
4" DIMJ 45 BEND	DICL (C151)	SIP PIPE PRODUCTS	2 EA
6" DIMJ 90 BEND	DICL (C151)	SIP PIPE PRODUCTS	2 EA
4" GATE VALVE	DICL (C151)	SIP PIPE PRODUCTS	1 EA
4" PIPE RESTRAINT	DICL (C151)	STAR PIPE PRODUCTS	1 EA
6" PIPE RESTRAINT	DICL (C151)	STAR PIPE PRODUCTS	1 EA
4" X 6" REDUCER	DICL (C151)	STAR PIPE PRODUCTS	1 EA



MKEC
 Wichita, KS • 316-684-9000

PRIVATE WATER DISTRIBUTION PLANS FOR
WSU NIAR - HAMR
 WICHITA, KS

DATE: 04/22/2024
 DESCRIPTION: PRIVATE WATER DISTRIBUTION PLANS FOR WSU NIAR - HAMR

PROJECT NUMBERS
 State Building # 771600-00065
 GLMV # 1116R02001
 05-79-0255-HAMR
 PROJECT TYPE: New Construction

Wichita State University
 FACILITIES PLANNING
 WICHITA STATE UNIVERSITY
 1845 Fairmount St.
 Wichita, KS 67260
 Tel: (316) 978-2444
 www.wichita.edu

Department of Administration
 Office of Facilities & Procurement
 Design, Construction & Compliance
 700 SW Harrison, Suite 1200
 Topeka, Kansas 66603
 Phone 765-296-8899

©2024 MKEC Engineering All Rights Reserved
 These drawings and their contents, including but not limited to, all concepts, designs, & ideas are the exclusive property of MKEC Engineering (MKEC) and may not be used or reproduced in any way without the express consent of MKEC.

WATER LINES 1 & 2

PROJECT NO.	2023-040849PPW	
DATE	01/22/2024	
SCALE	1"=40'	
DESIGNED	DRAWN	CHECKED
SPE	BKS	SPE

NO.	REVISION	DATE

SHEET NO. 5 OF 12

J:\PROJECTS\2023\202301010057_GLMV_WSU NIAR\1800 230057 CAD\SHS\506 CIVIL\WTR\23057 FP LINE 1.DWG

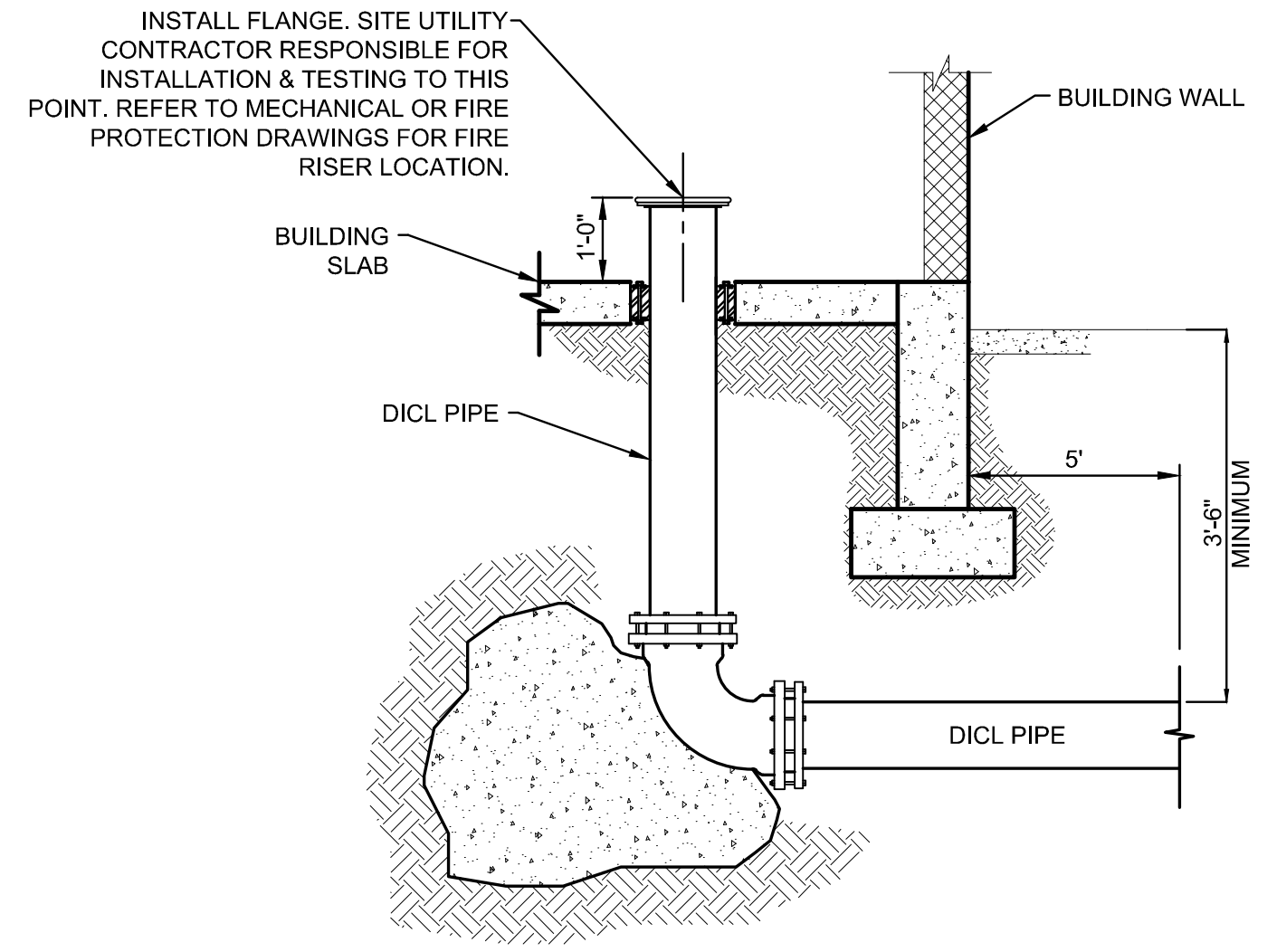
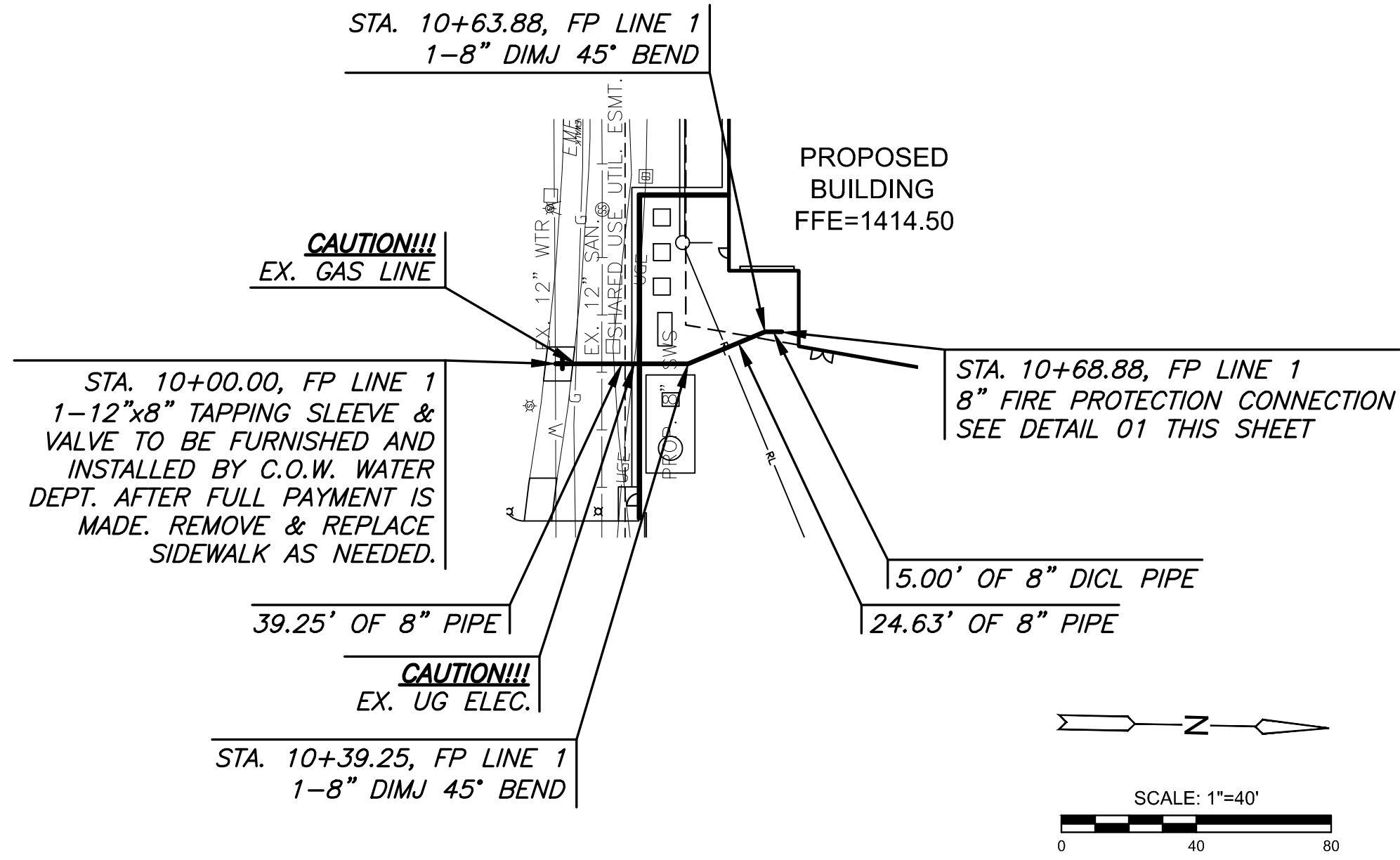
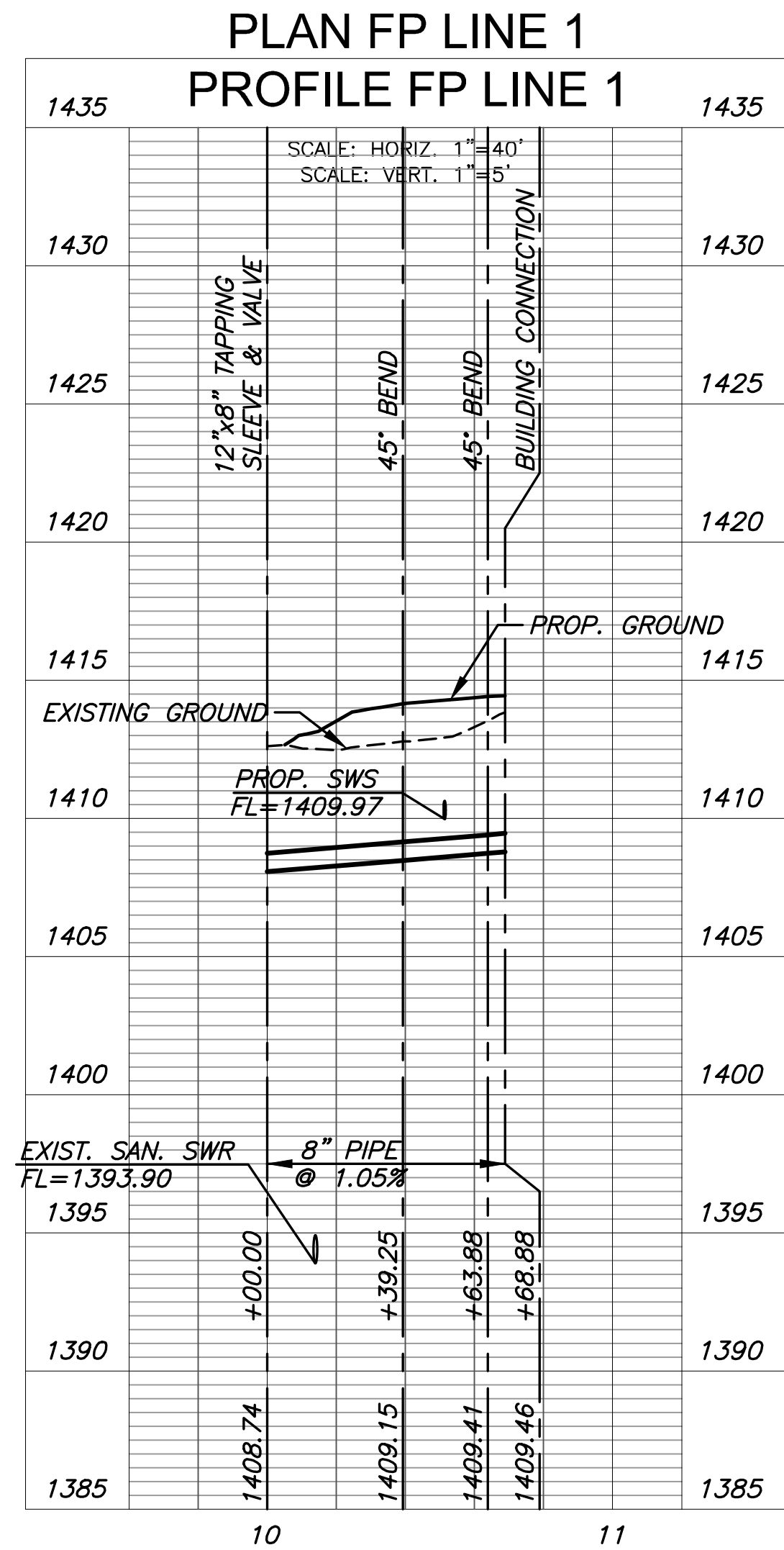
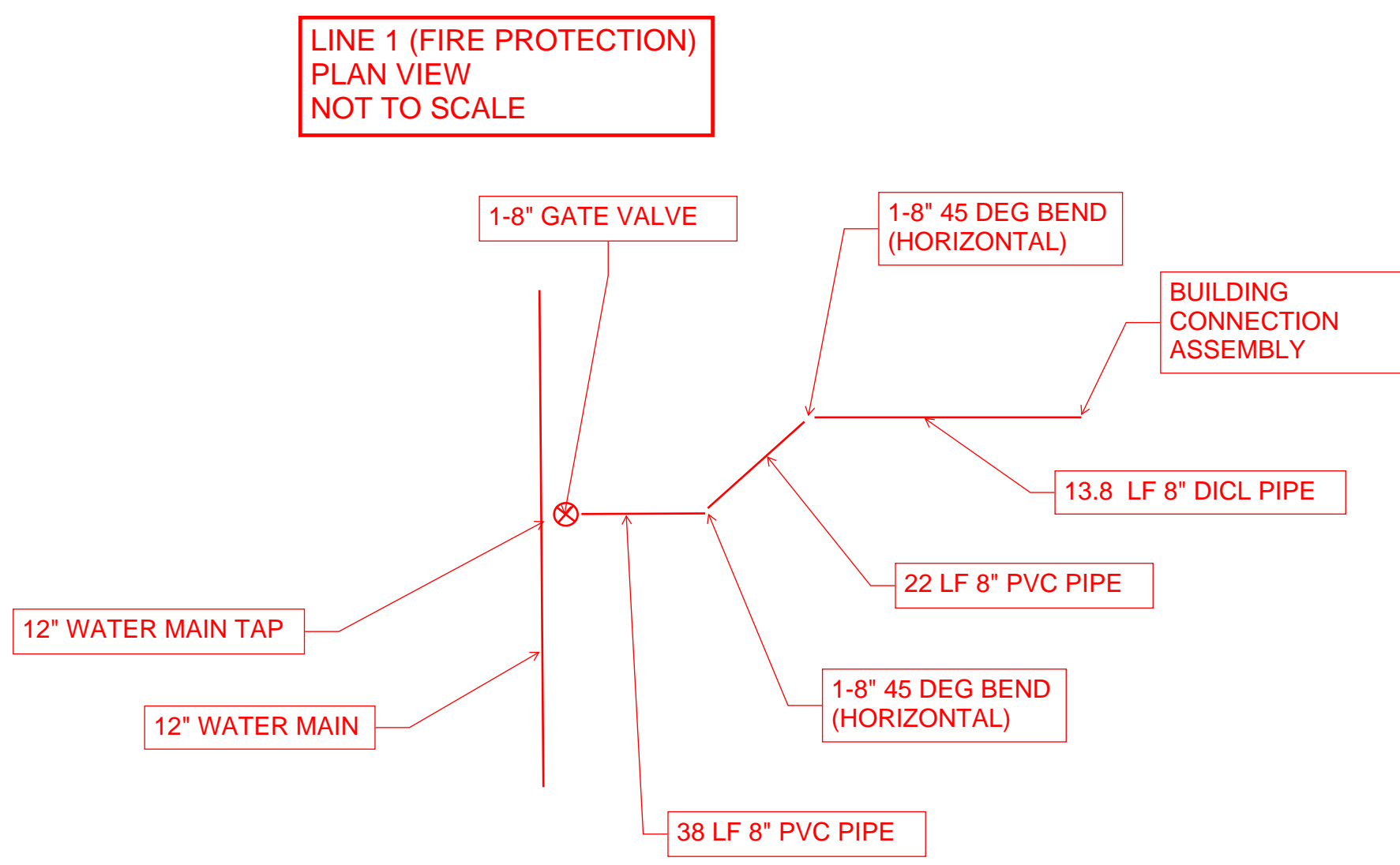
LOCATION OF FITTINGS AT STA 10+00 TO 11
 MEASURED FROM CENTER OF INTERSECTION AT 18TH STREET AND
 INNOVATION BLVD.
 STA. 10+00 FP LINE 1

12" X 8" TAP	165' S.	357.5' W.
1-8" GATE VALVE	164' S.	357.5' W.
1-8" 45 DEG. BEND	126' S.	357.5' W.
1-8" 45 DEG. BEND	104' S.	348.5' W.
BUILDING CONNECTION	90' S.	348.5' W.

SUMMARY TABLE

ITEM	TYPE	MANUFACTURER	QTY
8" PVC PIPE	DR C900	AMERICAN IRON PIPE	60 L.F.
8" DICTL PIPE	DUCTILE IRON	AMERICAN IRON PIPE	13.8 L.F.
8" DIMJ 45 BEND	DICTL (C151)	SIP PIPE PRODUCTS	2 EA
8" DIMJ 90 BEND	DICTL (C151)	SIP PIPE PRODUCTS	2 EA
8" GATE VALVE	DICTL (C151)	SIP PIPE PRODUCTS	1 EA

NOTE:
 CONTRACTOR TO VERIFY LOCATION
 AND ELEVATION OF EXISTING WATER
 LINE PRIOR TO CONSTRUCTION.



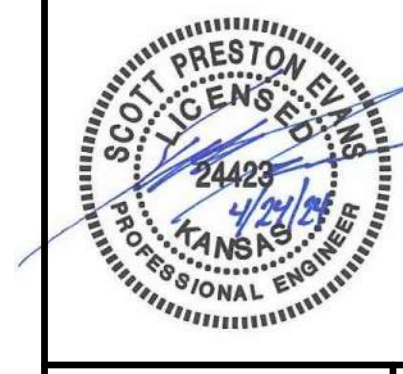
01 FIRE PROTECTION AT BUILDING (TYP.)
 SCALE: NTS



PRIVATE WATER DISTRIBUTION PLANS FOR
WSU NIAR - HAMR
 WICHITA, KS

FIRE PROTECTION LINE 1

PROJECT NO.	2023-040849PPW	
DATE	01/22/2024	
SCALE	1"=40'	
DESIGNED	DRAWN	CHECKED
SPE	BKS	SPE
NO.	REVISION	DATE
SHEET NO.		
6 OF 12		



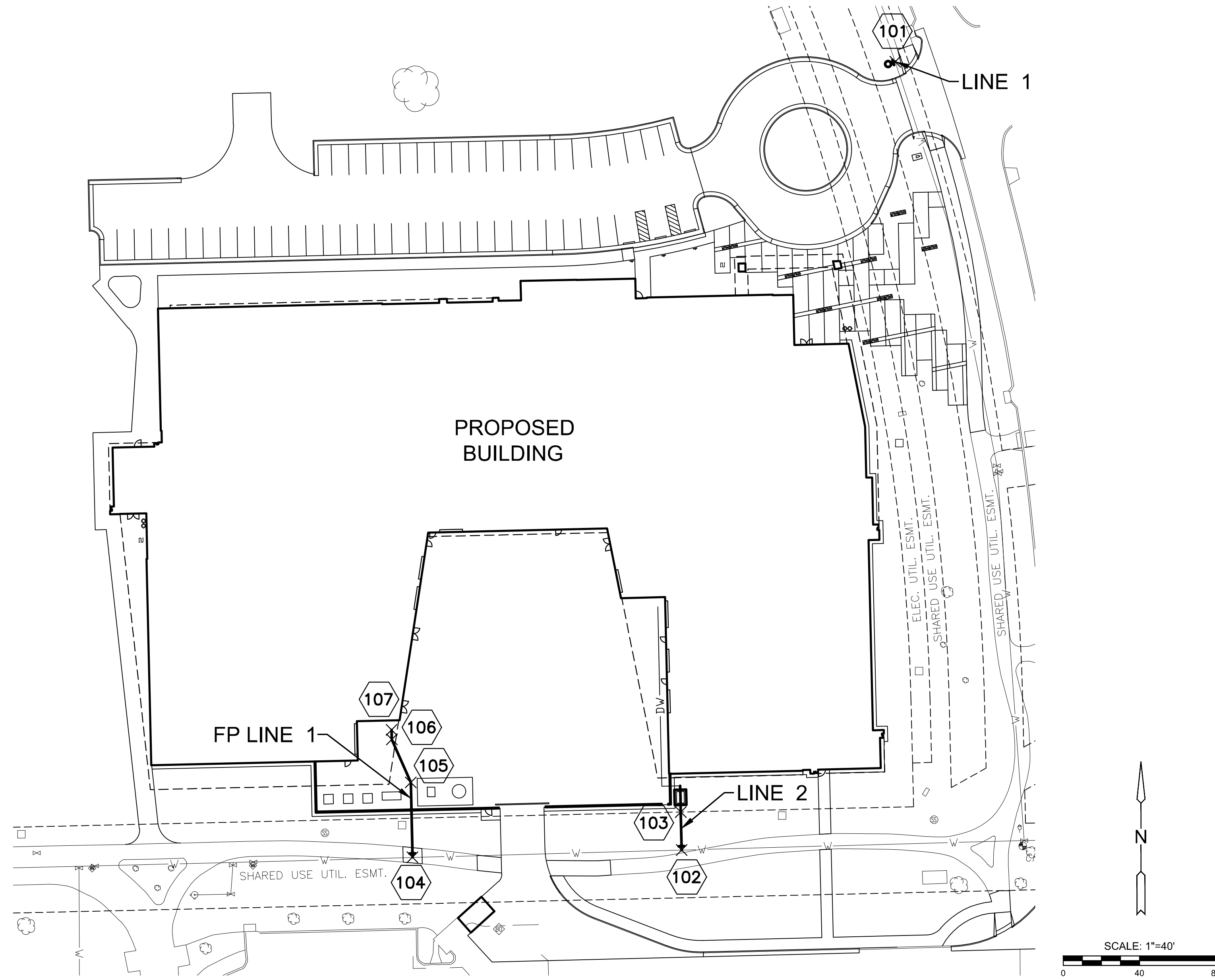
FC	ISSUED FOR CONST.	DATE

PROJECT NUMBERS
 State Building # 71500-00095
 GLMV # 1116R02001
 05-79-0255-HAMR
 PROJECT TYPE: New Construction

Wichita State University
 FACILITIES PLANNING
 WICHITA STATE UNIVERSITY
 1845 Fairmount St.
 Wichita, KS 67260
 Tel: (316) 978-2444
 www.wichita.edu

Department of Administration
 Office of Facilities & Procurement
 Design, Construction &
 Compliance
 700 SW Harrison, Suite 1200
 Topeka, Kansas 66603
 Phone 765-296-8899

WICHITA STATE UNIVERSITY
 NIAR - Hub for Advanced Manufacturing and Research
 (HAMR)
 1845 Fairmount St., Wichita, KS 67260
 BUILDING NUMBER 71500-00095
 DATE: 04/2/2024 DRAWN BY: BGS CHECKED BY: SPE



WATER POINTS			
Point #	Northing	Easting	Desc.
101	1697899.69	1663983.75	FH
102	1697486.31	1663871.74	TAPPING SLEEVE
103	1697506.25	1663871.28	END OF C.O.W. MAINT.
104	1697482.54	1663730.62	TAPPING SLEEVE
105	1697521.78	1663729.73	45° BEND
106	1697544.32	1663719.79	45° BEND
107	1697549.32	1663719.68	BLDG CONNECTION



PRIVATE WATER DISTRIBUTION PLANS FOR
WSU NIAR - HAMR
 WICHITA, KS

©2024
 MKEC Engineering
 All Rights Reserved
 www.mkec.com
 These drawings and their contents, including but not limited to, all concepts, designs, & ideas are the exclusive property of MKEC Engineering (MKEC) and may not be used or reproduced in any way without the express consent of MKEC.

WATER BUBBLE MAP

PROJECT NO.	2023-040849PPW	
DATE	01/22/2024	
SCALE	1"=40'	
DESIGNED	DRAWN	CHECKED
SPE	BKS	SPE
NO.	REVISION	DATE
SHEET NO. 7 OF 12		



FC	ISSUED FOR CONST.	DATE
A		04/24/2024

PROJECT NUMBERS
 State Building # 71500-00095
 GLMV # 1115R03001
 05-79-0255-HAMR
 PROJECT TYPE:
 New Construction

Wichita State University
FACILITIES PLANNING
 WICHITA STATE UNIVERSITY
 1845 Fairmount St.
 Wichita, KS 67260
 Tel: (316) 978-2444
 www.wichita.edu

Department of Administration
 Office of Facilities & Procurement
 Management
 Design, Construction &
 Compliance, Suite 1200
 700 SW Harrison, Kansas 66603
 Topoka, Kansas 66603
 Phone 765-296-8899

WICHITA STATE UNIVERSITY
NIAR - Hub for Advanced Manufacturing and Research (HAMR)
 1845 Fairmount St., Wichita, KS 67260
 BUILDING NUMBER 71500-00095
 DATE: 04/24/2024 DRAWN BY: BKS CHECKED BY: SPE