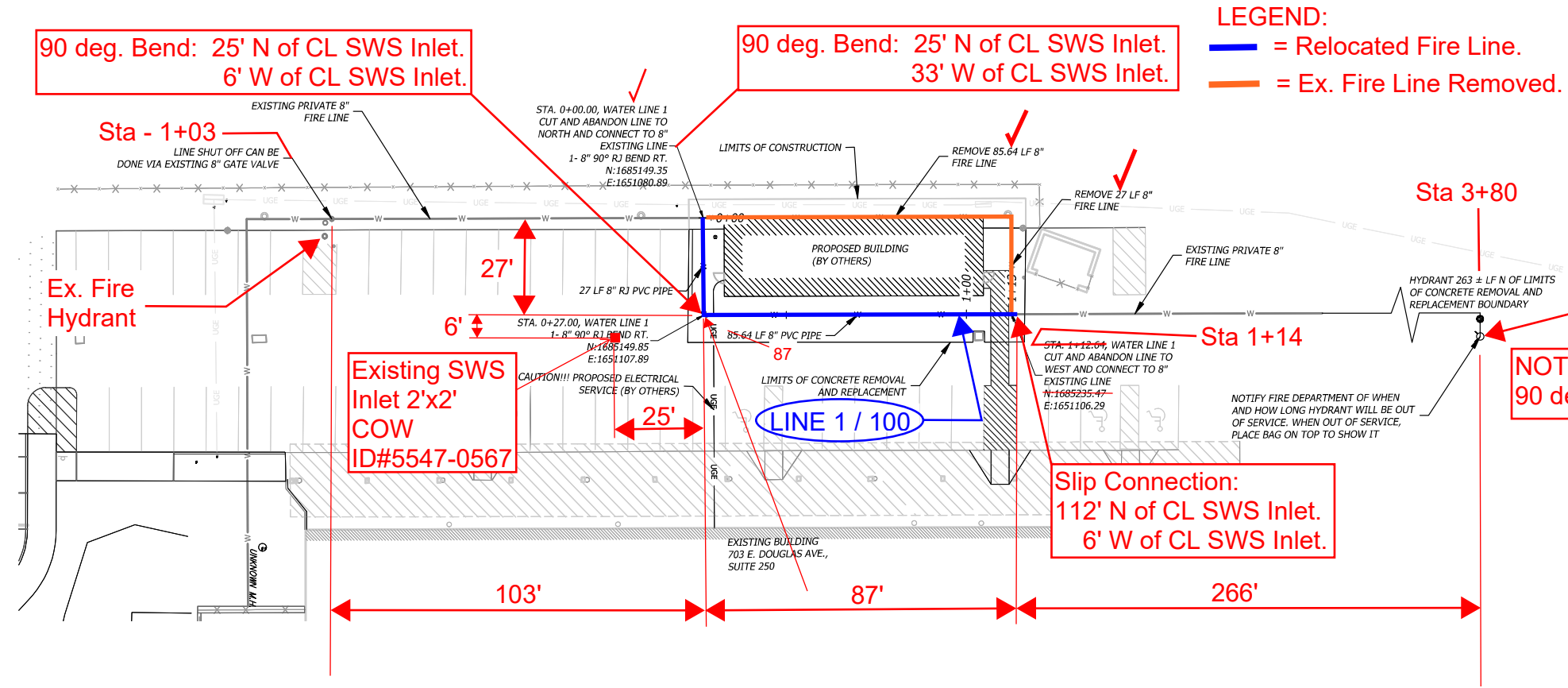
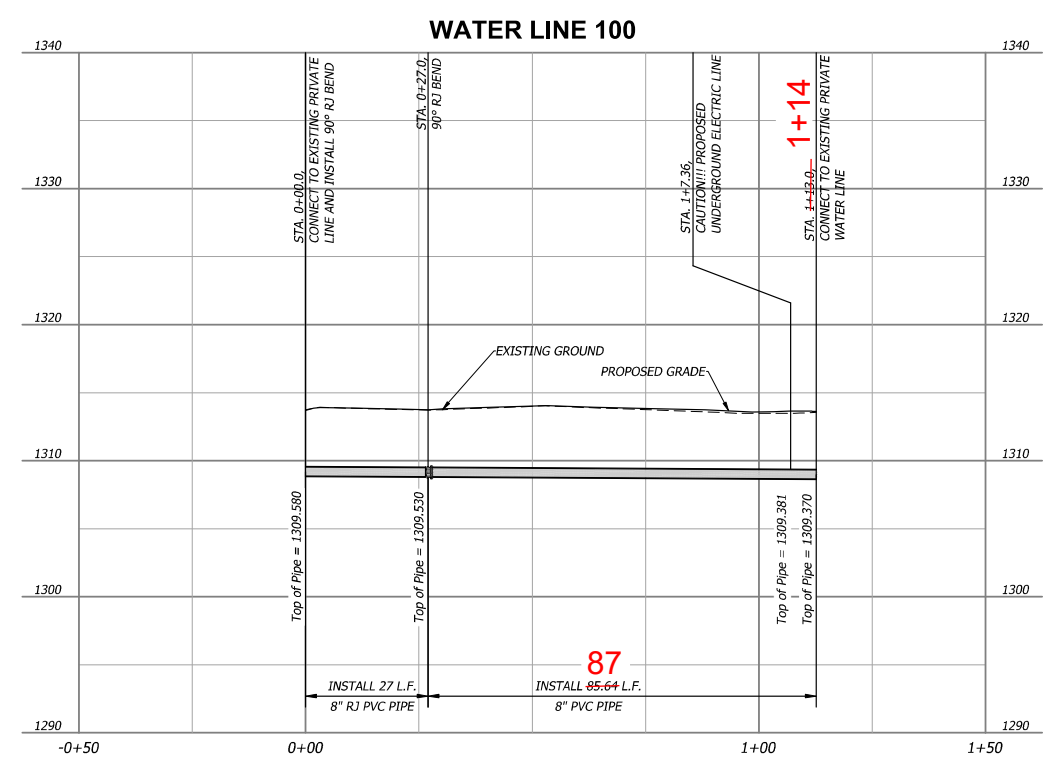
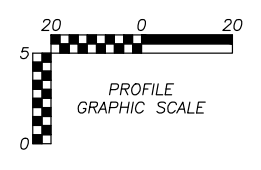
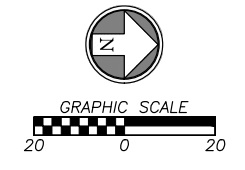


Mar 26, 2024 - 10:09am Plotted By: catherine.smoll V:\039880-Learning Lab Drop Off\04-DWG\Eng\Sheet\Private Projects\039880-SHFS-WATE.dwg Layout: Plan & Profile



- GENERAL NOTES:**
1. ALL NORTHINGS, EASTINGS, AND ALIGNMENT STATIONING FOR PRESSURE NETWORK ARE TO CENTER OF PRESSURE NETWORK FITTING/APPERTENCES UNLESS STATED OTHERWISE.
 2. ALL DIP MATERIAL SHALL BE CONFORMING TO THE CURRENT AWWA SPECIFICATION C151, CLASS 50. JOINTS SHALL BE MECHANICAL OR PUSH ON TYPE.
 3. MAINTAIN A MINIMUM OF 18" VERTICAL SEPARATION BETWEEN WATERLINE AND STORM SEWER LINE.
 4. ALL PVC PIPE MATERIAL SHALL BE CONFORMING TO THE CURRENT AWWA SPECIFICATION C900, CLASS 150, DR 18.
 5. CONTRACTOR TO PROVIDE VEHICLE BARRIERS TO PROTECT CONSTRUCTION ZONE.



App.	By	MTT
Description	FOR CITY SUBMITTAL	CBS
Date	03/13/2024	00
Rev.		

Professional Engineer Seal: MICHAEL T. MAKAS, 28041, 08/27/2024, KANSAS PROFESSIONAL ENGINEER

BHC
 CIVIL ENGINEERING / SURVEYING / UTILITIES
 710 College Blvd., Suite 400
 Overland Park, Kansas 66210
 P: (913) 463-1900
 WE ARE A DIVISION OF BURGESS NEIBERGER & COMPANY, P.A.

Prepared For:
 ALLOY ARCHITECTURE
 BEN WALTER
 165 S ROCK ISLAND ST STE 200
 WICHITA, KS
 (316) 634-1111

**PRIVATE FIRE LINE RELOCATION
 STAND TOGETHER LEARNING LAB
 WICHITA, KS**

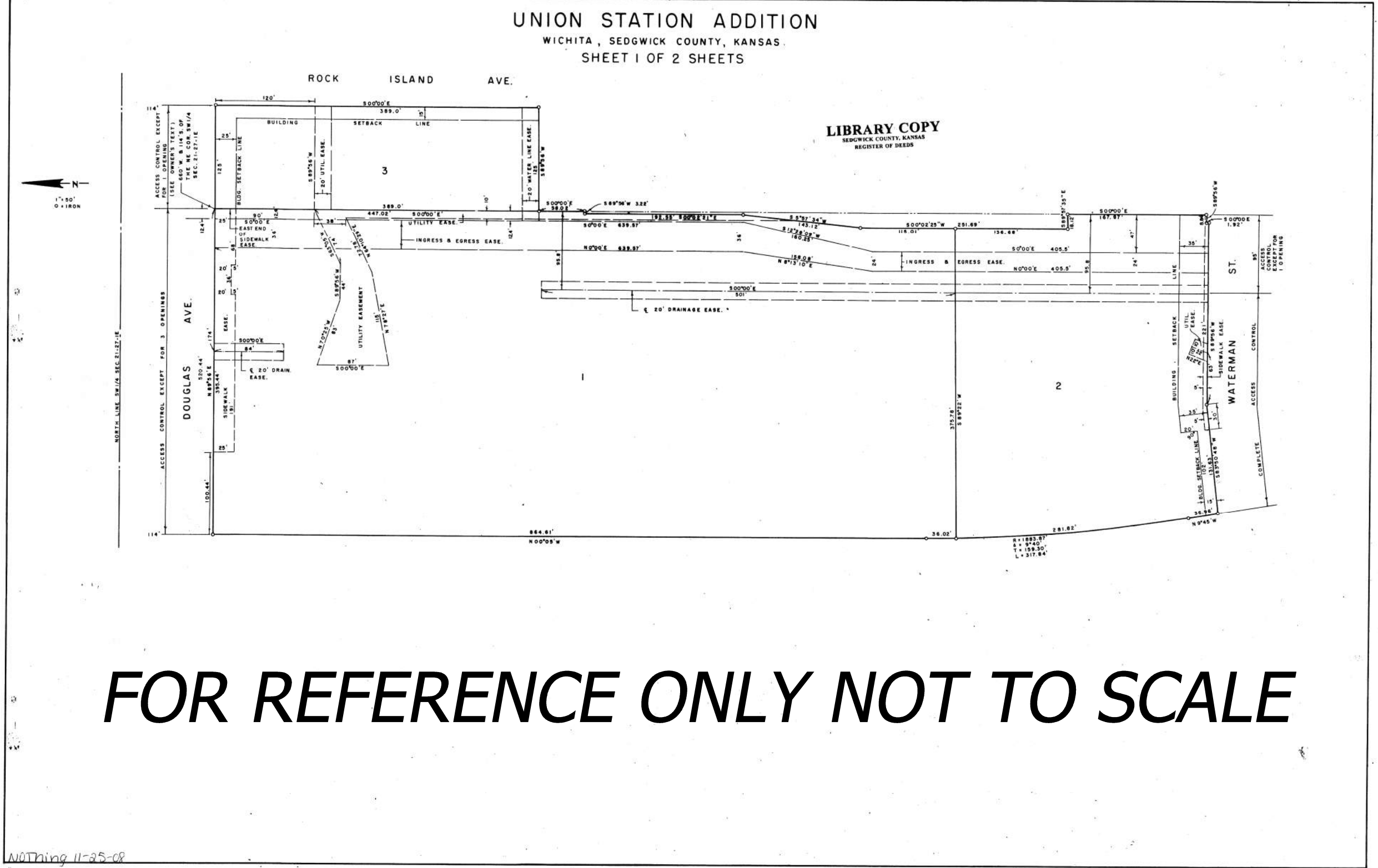
WATER LINE PLAN & PROFILE

Design: CBS Drawn: CBS
 Checked: MLT
 Issue Date: 03/27/2024
 Project Number: 039880

02

Mar 27, 2024 - 10:04am Plotted By: catherine.smoll V:\039880-learning lab drop of\04-DWG\Eng\Sheet\Private Projects\039880-SHTS-WATR.dwg Layout: Plot


S-1-4-21A



FOR REFERENCE ONLY NOT TO SCALE

Nothing 11-25-08

S-1 4-21A

PRIVATE FIRE LINE RELOCATION STAND TOGETHER LEARNING LAB WICHITA, KS	PLAT	Design: CBS Drawn: CBS Checked: MLT Issue Date: 03/27/2024 Project Number: 039880	Date: 03/13/2024 Description: FOR CITY SUBMITTAL	By: CBS App: MTT
		Prepared For: ALLOY ARCHITECTURE BEN WALTER 165 S ROCK ISLAND ST STE 200 WICHITA, KS (316) 634-1111		
		CIVIL ENGINEERING / SURVEYING / UTILITIES 710 College Blvd, Suite 400 Overland Park, Kansas 66210 P. 913 663-1900 <small>Member of the Brno Group of Companies, L.A.</small>		