

GENERAL NOTES:

- The Contractor shall comply with all applicable safety regulations. All construction shall be completed following current City Standard Specifications and Special Provisions.
- Contractor will be required to provide notice to utility companies a minimum of seventy-two (72) hours prior to any excavation, as follows:

Kansas One-Call 687-2470

The Contractor must notify the following in case of an emergency:

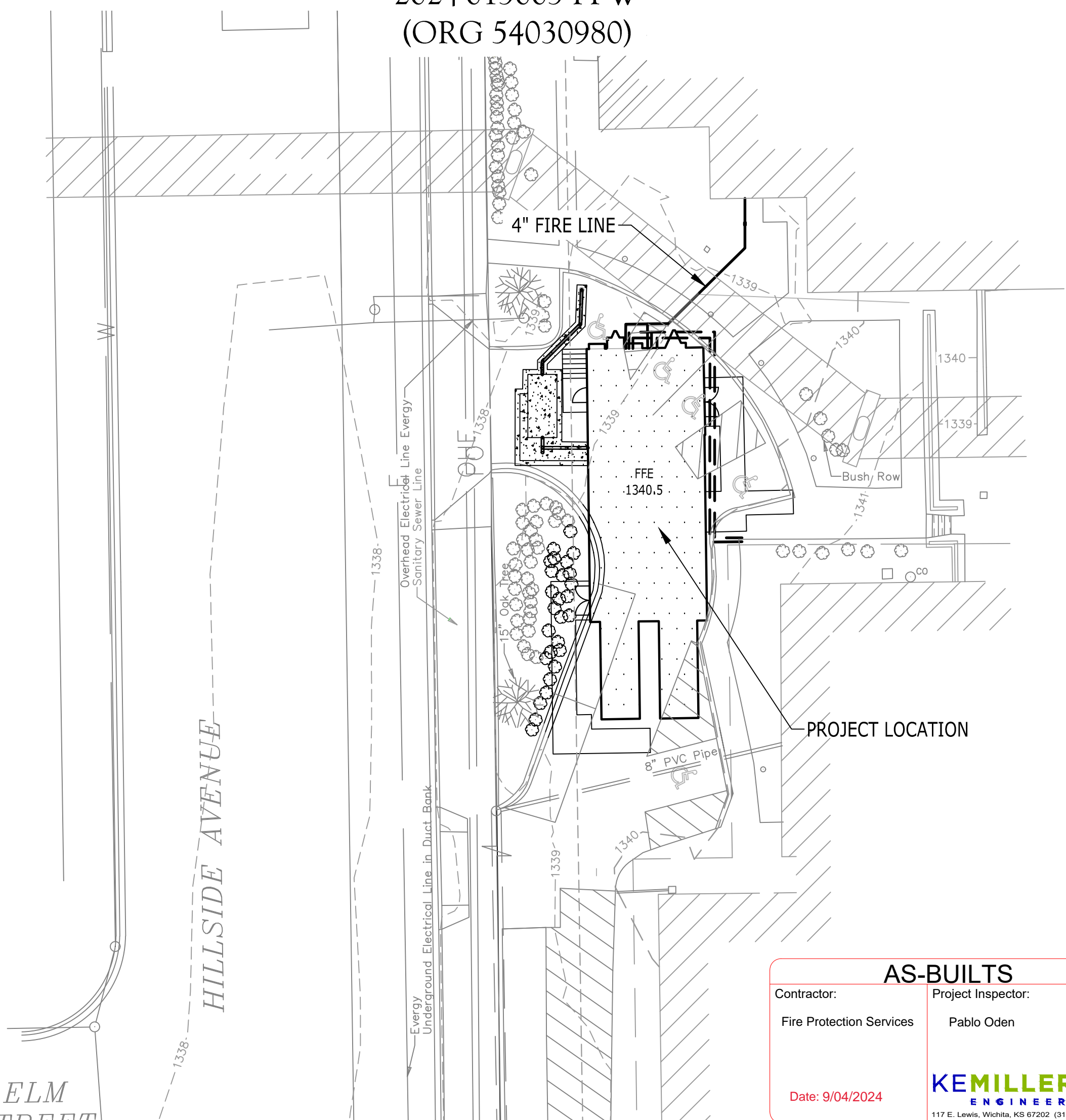
AT&T 1-800-246-4864
 Black Hills Energy 1-800-694-8989
 City of Wichita Water & Sewer 1-316-219-8921
 City of Wichita Stormwater 1-316-268-4090
 City of Wichita Traffic 1-316-268-4034
 Cox Communications 1-888-249-3530
 Kansas Gas Services 1-888-482-4950
 Evergy 1-800-544-5857
- Utility service lines, poles, etc. are to be adjusted as necessary by others prior to construction unless the plans specifically call for their adjustment by the Contractor or unless the plans specifically identify a utility to be adjusted by its owner during construction. Existing utilities and their location, as shown on the plans, represent the best information obtainable for design. The Contractor will be required to work around existing utilities within the right-of-way which do not conflict with proposed construction.
- Rubble from the removal of miscellaneous structures and excess excavation which is to be wasted shall be disposed of on sites to be provided by the Contractor. These sites shall be approved by the Engineer as to suitability, appearance and site location. Locations, in the opinion of the Engineer, that will leave an unsightly appearance will not be approved. All disposal sites must be approved by the Kansas Department of Health and Environment. Material either stockpiled or disposed of in a flood plain will require a Kansas State Board of Agriculture permit. Any material dumped in waters of the United States or wetlands is subject to U.S. Corps. of Engineers permitting regulations. Any material buried or stockpiled beyond approved construction limits will require additional archaeological investigations unless buried in a previously approved borrow location.
- Trees and shrubs in public right-of-way which are in direct conflict with proposed new construction shall be removed by the Contractor with the City Engineer's approval. Trees and shrubs which are not in direct conflict with proposed new construction shall be saved and protected from damage.
- The Contractor shall give all property owners and/or tenants of developed property abutting the construction of this project a minimum of ten (10) days notice prior to start of construction.
- The Contractor shall be responsible for preserving property irons. The Contractor will be required to re-establish any property irons which are damaged or destroyed by his construction operations. Such irons shall be re-established by a licensed land surveyor in accordance with state laws.
- The Engineering Division shall field locate water valves one time during construction when requested by the Contractor. It shall be the Contractor's responsibility to preserve such field locations during the construction process. Water valves, valve boxes or fire hydrants damaged during construction shall be repaired by Contractor at his own expense. Valve boxes and water meters within the project limits shall be adjusted to match final grades by the contractor.
- The Contractor shall notify the inspecting engineer and Dawnita Reinhardt at 316-268-4574 with the City of Wichita with the anticipated construction start date and notify them of project completion. Staking and inspection for this project will be the responsibility of the Contractor.
- If traffic will be impacted by construction, a traffic control plan must be submitted and approved by the City Traffic Engineer, Mike Armour at traffic@wichita.gov before construction can begin. The Contractor shall be responsible for all traffic control measures to facilitate construction. All construction zone markings and signage shall conform to the latest version of the Manual on Uniform Traffic Control Devices (MUTCD) as published by the U.S. Dept. of Transportation, Federal Highway Administration. All costs associated with construction markings and signage shall be the Contractors responsibility.
- All elevations shown are NAVD 88.
- All areas disturbed during construction that will not be under proposed pavement shall be restored to match existing conditions.

- Any sidewalk, drive approach, curb, or street pavement removed to construct project must have a pavement cut permit and be replaced by the City contractor. Permits can be obtained by calling 316-268-4501 or 316-268-4480.
- All applicable fees (tap, equity, in lieu of & main benefit) must be paid before any connections can be made on this project. Quotes can be obtained on fees by calling 316-268-4555.
- City maintenance of water mains ends at right-of-way or easement line or within two feet of vault.
- Opening and closing of water valves shall be done slowly to prevent damage to the water distribution system from water hammer. All valves closed by the contractor must be reopened as new construction permits. The project inspector must ascertain that any valve closed by the Contractor is reopened. The contractor will be permitted to operate water valves only when the project inspector assigned to the project is present.
- The Contractor shall lay a Tracer Wire and Set Test Stations along all water pipe installed in accordance with City Specifications and Tracer Wire Detail on detail sheet WL-101, cost is subsidiary to pipe installation.
- The contractor shall provide materials for temporary blowoff of waterlines. Connections to the existing waterline(s) shall be made with clean, swabbed pipe and flushed upon completion of tie-ins.
- Requests for short term water interruptions shall be made to the City Water Distribution Division and will be subject to their approval. The Contractor shall give written notice to any property owner, business, and/or tenants that will have water service interrupted at least 5 days in advance. Such notifications should indicate the time and date that the water will be turned off and when the service will be restored. No business, property owner, and/or tenants shall be without water service for more than 8 hours. Proposed tie in locations which will affect water service to property owners shall be preformed during non-peak hours.
- The Contractor must schedule the connections to the existing main with the City such that there is a minimum disruption of service. Connections shall be made during periods of low water usage. The Contractor shall submit his proposed schedule for completing work for City approval at least 10 days prior to beginning construction.
- Deflections at pipe joint or couplings shall not exceed the pipe manufacturers recommended maximum. Where deflections are greater than the maximum allowed, the contractor shall utilize fittings.
- Any existing joint exposed during excavation shall be replaced if within four feet of proposed joint.
- Valves 12 inch and larger are to be operated by the City Water Distribution Division, 48 hours of advance notice is required with the water Dispatch at 316-291-8921.
- All wet taps shall be installed by the City of Wichita. The Contractor will reimburse the City for tapping fees prior to tap being made. Unless noted on plans.
- The Contractor shall protect from damage and support existing utilities through construction as approved by the utility owner and the Engineer at the contractors expense.
- Contractor shall limit the extent of trench openings overnight and weekends to less than 50 feet.
- Wichita Fire Department inspections may be scheduled by calling 316-268-4574.
- MAINTAIN A MINIMUM OF 10-FOOT HORIZONTAL SEPARATION BETWEEN ALL WATER LINES (MAINS, SERVICES, AND FIRE HYDRANTS) AND ALL SANITARY SEWER LINES (MAINS, SERVICES, AND MANHOLES). ALL SEPARATION DISTANCES ARE TO BE MEASURED FROM EDGE-TO-EDGE AT THE CLOSEST POINT.
- MAINTAIN A MINIMUM OF 2-FOOT VERTICAL SEPARATION BETWEEN ALL WATER LINES (MAINS AND SERVICES) AND ALL GRAVITY SANITARY SEWER LINES (MAINS, SERVICES, AND MANHOLES) AT CROSSINGS. ALL SEPARATION DISTANCES ARE TO BE MEASURED FROM EDGE-TO-EDGE, AT THE CLOSEST POINT.
- MAINTAIN A MINIMUM OF 2-FOOT VERTICAL SEPARATION BETWEEN ALL WATER LINES (MAINS AND SERVICES) AND ALL PRESSURIZED SANITARY SEWER LINES (FORCE MAINS AND SERVICES) AT CROSSINGS. WATERLINES MUST ALWAYS BE PLACED ABOVE PRESSURIZED SANITARY SEWER LINES WHERE THEY CROSS. ALL SEPARATION DISTANCES ARE TO BE MEASURED FROM EDGE-TO-EDGE AT THE CLOSEST POINT.

WATER DISTRIBUTION SYSTEM to serve WESLEY MEDICAL CENTER TEMPORARY KITCHEN 550 NORTH HILLSIDE ST. CITY OF WICHITA, KANSAS

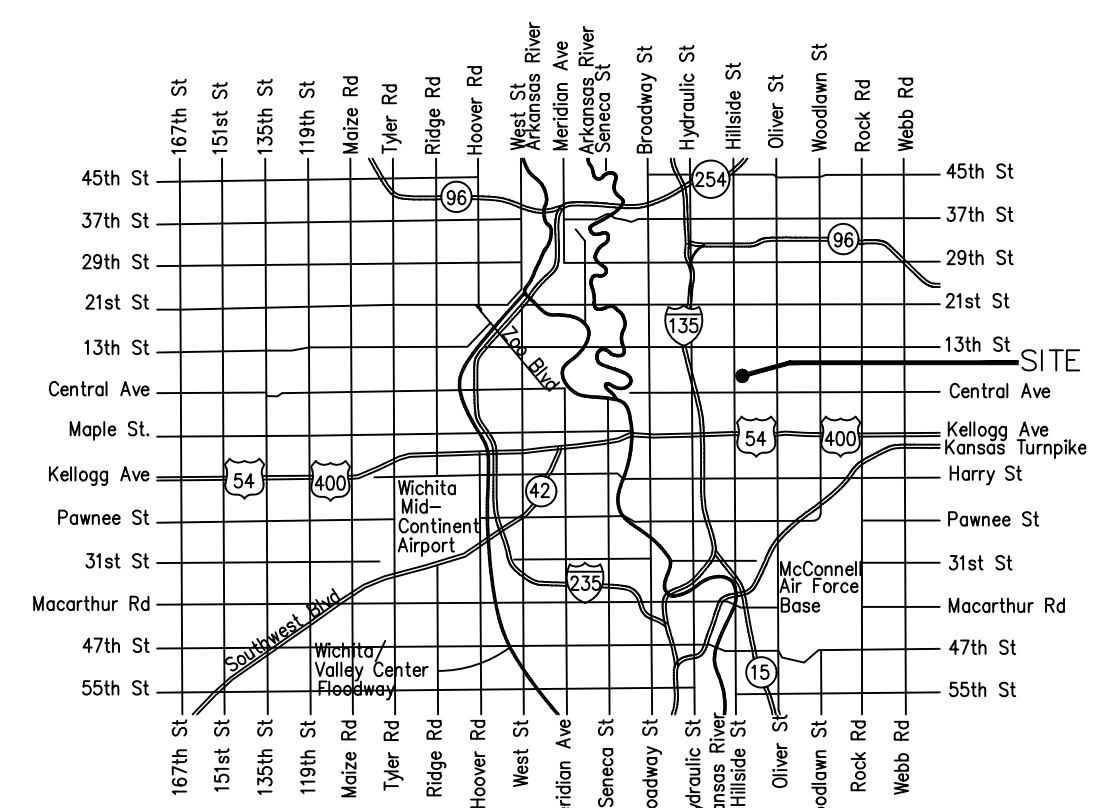
Paul Gunzelman, P.E. City Engineer

Project Number
2024-013003 PPW
(ORG 54030980)



Benchmarks

BM #1:
CENTER SHOT OF SANITARY SEWER MANHOLE
APPROXIMATELY 21.4 FEET WEST AND 25.6 FEET NORTH
OF THE SOUTHWEST CORNER OF LOT 4, WESLEY
MEDICAL CENTER 3RD ADDITION, WICHITA, KANSAS
ELEV: 1338.61 (NAVD 88)



Vicinity Map

Sheet Number	Sheet Title
C0.1	PPW COVER SHEET
C1.0	EXISTING CONDITIONS AND DEMOLITION PLAN
C2.0	LAYOUT, GRADING, AND UTILITIES PLAN
SW501	BACK OF CURB PROTECTION, CURB INLET PROTECTION, AND CONSTRUCTION ENTRANCE
SW502	SILT FENCE DITCH CHECK AND BARRIER DETAILS
SW503	STRAWBALE DITCH CHECK AND BARRIER DETAILS
SW504	STREET IMPROVEMENT PROJECT
SW505	SUBDIVISION DEVELOPMENT PROCESS
WL101	STANDARD WATER ASSEMBLY DETAIL
WL102	STANDARD WATER SERVICE DETAIL
WL103	STANDARD VAULT DETAILS AND METER ASSEMBLIES
WL104	MISCELLANEOUS WATER DETAILS

Materials:
4" C900 Sanderson Pipe
4" D1CL McWane Ductile
4" Sigma D1CL Fittings



AS-BUILTS

Contractor: Fire Protection Services	Project Inspector: Pablo Oden
Date: 9/04/2024	

KEMILLER ENGINEERING PA
117 E. Lewis, Wichita, KS 67202 (316)264-0242



CIVIL ENGINEER/LANDSCAPE ARCHITECT

Catalyst
DESIGN GROUP

5100 TENNESSEE AVENUE,
NASHVILLE, TN 37209
(615) 622-7200
JACK J. PARKER, PE 25943
JEFFREY D. HEINZE, PLA 647

ARCHITECT
BARGE DESIGN SOLUTIONS
615 3RD AVE SOUTH
NASHVILLE, TN 37210
615-254-1500

PREPARED FOR
WESLEY MEDICAL CENTER
550 NORTH HILLSIDE STREET
WICHITA, KS 67241
316-962-2960

APPROVED AS NOTED
BY WICHITA PUBLIC WORKS
ENGINEERING DIVISION
& BY WICHITA FIRE DEPARTMENT

Engineering	SHAWN MELLIES	06/26/2024
Utilities	GREG LOLLEY	06/26/2024
Fire Dept.	JOSE OCADIZ	06/26/2024

NOTE TO CONTRACTORS

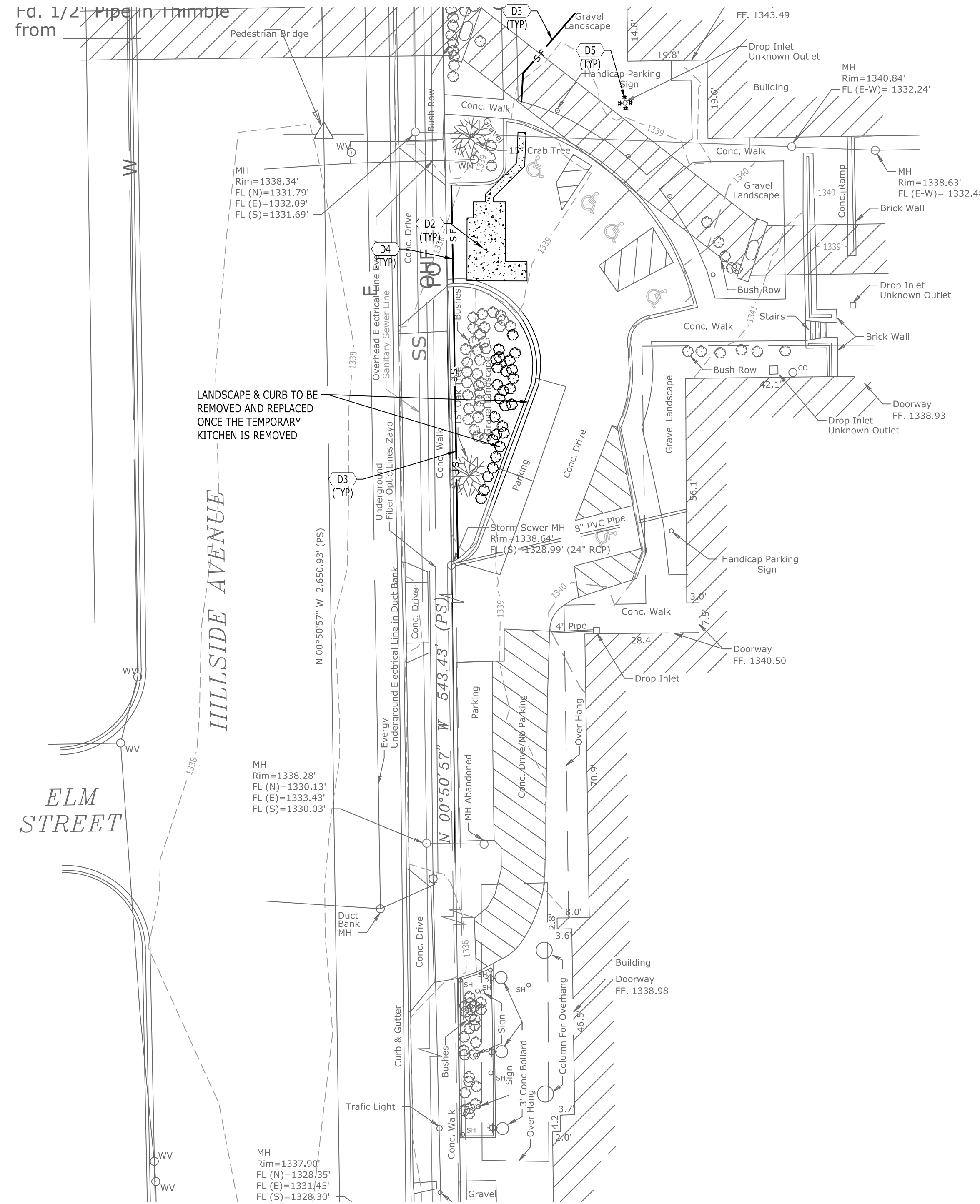
Public Property:
Inspection and testing for the waterline is to be provided by a Licensed Consulting Engineering Firm under contract with the Owner/Developer. Said inspection is to be in accordance with the City of Wichita standard construction engineering practices and certified by a Professional Engineer Licensed in the state of Kansas. No work shall be performed in dedicated easements or public right-of-way by the Contractor without such inspection nor shall any work be commenced without written authorization by City Engineering. All Construction and Materials shall comply with the City or Wichita Specifications and Standards and Special Provision (on file and available in the City Engineer's Office) or on the City's Website.

Private Property:
Installation and testing for the fire protection line is to be performed by a City of Wichita licensed fire protection contractor in accordance with the fire codes as adopted by the City of Wichita. All material and construction practices for the fire protection line shall comply with the fire codes as adopted by the City of Wichita (available from the City of Wichita Fire Department). The Contractor shall not commence work without notification and approval of the Wichita Fire Department. Inspection of the fire protection line is to be provided by a licensed Engineering Firm under contract with the Owner/Developer and the Fire Department. The contractor shall not start work until the project inspector is assigned to the project and present on the site. Any work done without inspection will be required to be uncovered for inspection.

An approved copy of these plans signed by City staff are required on-site.

DEMOLITION NOTES

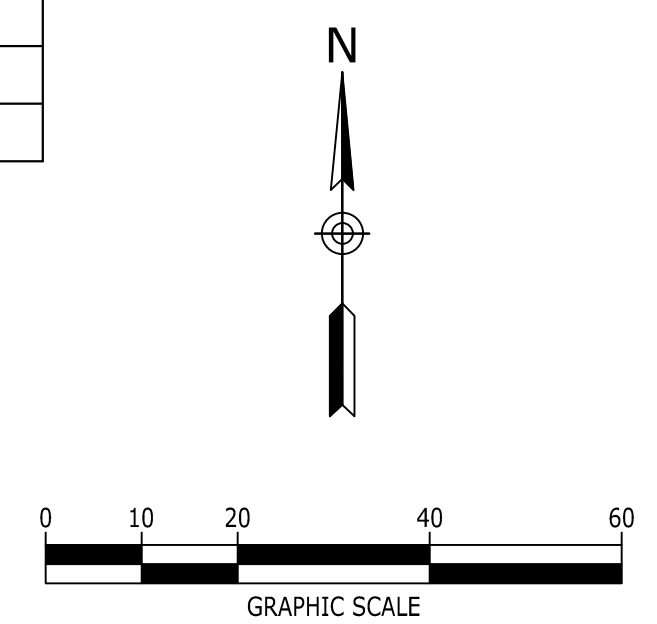
1. THE CONTRACTOR SHALL REQUEST UTILITY LOCATION (811) AND VERIFY LOCATION OF ALL OTHER PRIVATE UTILITIES PRIOR TO CONSTRUCTION. THE CONTRACTOR SHALL PROTECT EXISTING UTILITIES FROM DAMAGE AND REPAIR IF DAMAGED PER PROVIDER REQUIREMENTS AT THE CONTRACTOR'S EXPENSE. COORDINATE ALL WORK AROUND EXISTING UTILITIES WITH CORRESPONDING PROVIDER.
2. THE CONTRACTOR SHALL PROTECT PROPERTY BOUNDARY PINS AND SURVEY CONTROL POINTS FROM DAMAGE.
3. THE CONTRACTOR SHALL COMPLY WITH EROSION CONTROL REQUIREMENTS AND INSTALL NECESSARY EPSC MEASURES AND CONSTRUCTION ENTRANCE/ EXIT PRIOR TO DISTURBING EXISTING VEGETATION. THE CONTRACTOR SHALL ALSO USE WATER SPRINKLING OR OTHER MEASURES TO CONTROL DUST AND OTHER AIRBORNE DEBRIS RESULTING FROM DEMOLITION.
4. TREE PROTECTION MEASURES SPECIFIED IN THESE PLANS SHALL BE INSTALLED PRIOR TO BEGINNING DEMOLITION OPERATIONS.
5. THE CONTRACTOR SHALL OBTAIN ALL REQUIRED PERMITS FOR DEMOLITION AND TREE REMOVAL.
6. THE CONTRACTOR MAY BE REQUIRED TO PHASE THE DEMOLITION TO MAINTAIN EXISTING UTILITY SERVICES, PROPER DRAINAGE OR ACCESS TO THE SITE OR ADJOINING SITES. THE CONTRACTOR SHALL MINIMIZE THE DISRUPTION OF EXISTING ACTIVE UTILITIES AND TRAFFIC PATTERNS. THE CONTRACTOR SHALL COORDINATE WITH THE OWNER'S REPRESENTATIVE AND PROVIDE A DEMOLITION PHASING SCHEDULE WHERE REQUESTED.
7. UTILITY AND STORM SEWER LINES SHOULD NOT BE DEMOLISHED UNTIL NEW OR RELOCATED LINES HAVE BEEN INSTALLED AND ARE OPERATIONAL.
8. THE CONTRACTOR SHALL INCLUDE IN THEIR COST ANY ISOLATION VALVES OR TEMPORARY MEASURES REQUIRED TO ACCOMPLISH RELOCATIONS AND DEMOLITION OF UTILITIES.
9. THE CONTRACTOR IS RESPONSIBLE FOR ALL DEMOLITION REQUIRED TO ACCOMPLISH THE PROPOSED WORK.
10. PAVEMENTS, SIDEWALKS, CURBS AND OTHER HARD SURFACES SHALL BE EVENLY SAW CUT AT THE LIMITS OF REMOVAL TO PROVIDE A CLEAN EDGE. COORDINATE LIMITS OF REMOVAL WITH PROPOSED CONSTRUCTION INCLUDING GRADING, UTILITY INSTALLATION, PROPOSED LAYOUT, ETC.
11. EXISTING SITE FEATURES NOTED AS BEING ABANDONED MAY BE ABANDONED IF THE ITEMS ARE LOCATED MORE THAN 24" BELOW FINAL SUBGRADES (TO TOP OF PIPE OR OTHER FEATURE) AND NOT LOCATED WITHIN THE PROPOSED FUTURE BUILDING FOOTPRINTS. ENDS OF PIPES SHALL BE SEALED WITH CONCRETE.
12. ALL DEMOLISHED MATERIALS SHALL BE REMOVED FROM THE SITE AT THE CONTRACTOR'S COST UNLESS NOTED TO BE PROVIDED TO THE OWNER.
13. CAVITIES LEFT BY DEMOLITION SHALL BE PROPERLY BACKFILLED AND COMPACTED IN ACCORDANCE WITH THESE PLANS AND SPECIFICATIONS.
14. WHERE EXISTING IRRIGATION LINES ARE LOCATED WITHIN THE AREA OF CONSTRUCTION, THEY SHALL BE PROTECTED OR RE-ROUTED AND CONNECTED TO MAINTAIN OPERATION OF LANDSCAPE AREAS WHICH REMAIN DURING CONSTRUCTION. COORDINATE TEMPORARY MEASURES WITH DESIGN OF NEW SYSTEM AND REMOVE TEMPORARY MEASURES WHEN NO LONGER NEEDED.



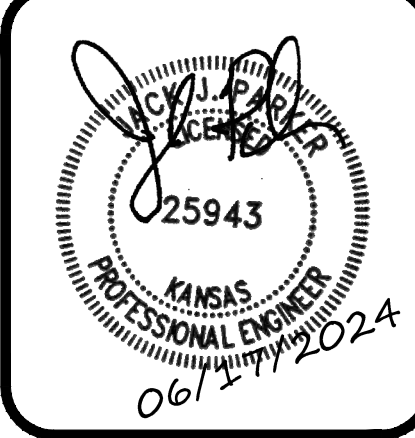
DEMOLITION KEYNOTES	
CODE	DESCRIPTION
D1	REMOVE EXISTING ASPHALT PAVEMENT
D2	REMOVE EXISTING CONCRETE PAVEMENT
D3	SILT FENCE
D4	EROSION EEL
D5	INLET PROTECTION

LEGEND	
BUILDING TO BE REMOVED	
CONCRETE TO REMOVE	
ASPHALT PAVEMENT TO REMOVE	
TREES TO BE REMOVED	

BASE INFORMATION WAS TAKEN FROM A SURVEY PREPARED BY GARBER SURVEYING SERVICE, P.A., DATED 2/15/2024. CATALYST DESIGN GROUP AND ANY OF THEIR CONSULTANTS SHALL NOT BE HELD RESPONSIBLE FOR THE ACCURACY AND/OR COMPLETENESS OF THAT INFORMATION SHOWN HEREON OR ANY ERRORS OR OMISSIONS RESULTING FROM SUCH.



WESLEY MEDICAL CENTER, INC.
550 N. HILLSIDE ST.
WICHITA, KS 67214



**WESLEY MEDICAL CENTER
TEMPORARY KITCHEN**
WICHITA, KANSAS

NO.	DATE	DESCRIPTION
1	06/17/2024	Amendment # 4
2	06/05/2024	Amendment # 3
3	04/30/2024	Amendment # 2
4	04/19/2024	Amendment # 1

EXISTING CONDITIONS, DEMOLITION, & EROSION CONTROL PLAN
PROJECT NUMBER: 20230070
DRAWING NUMBER: **C1.0**

SITE UTILITY NOTES

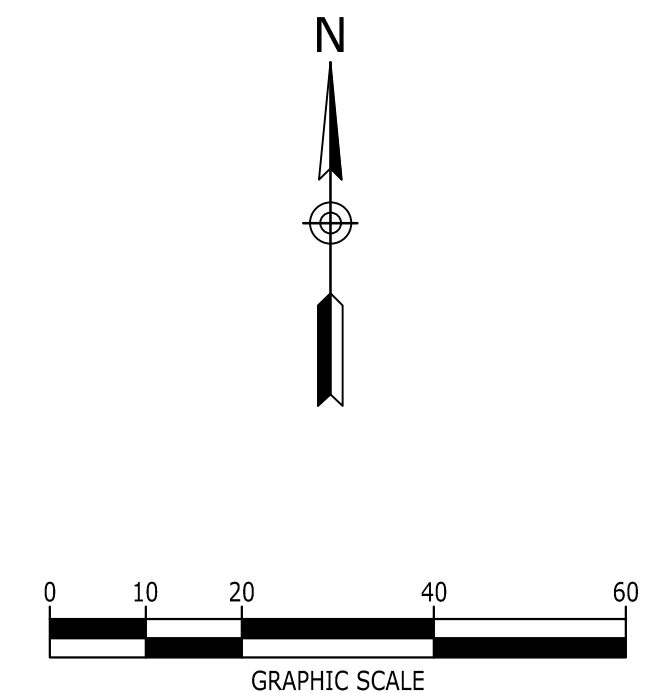
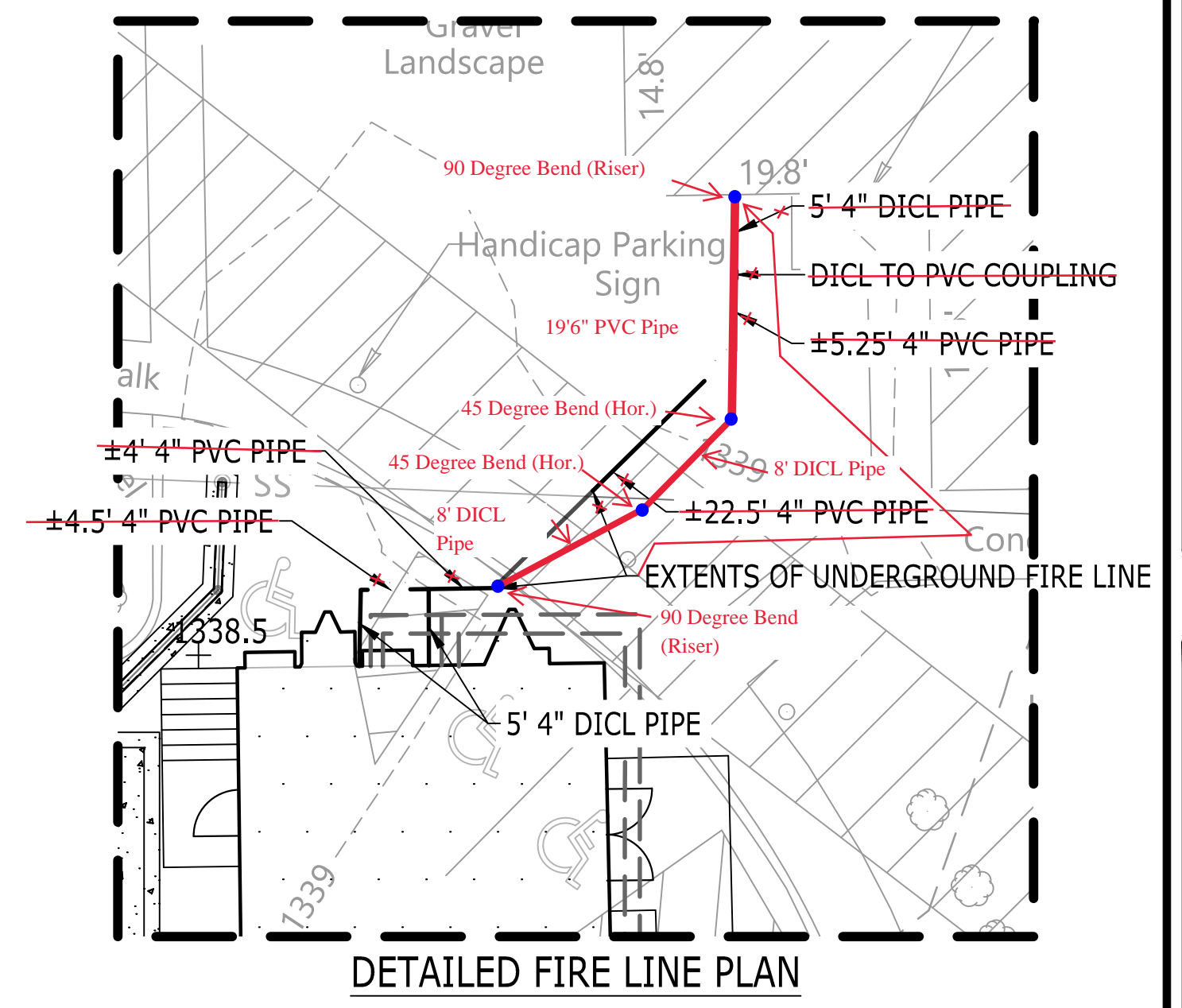
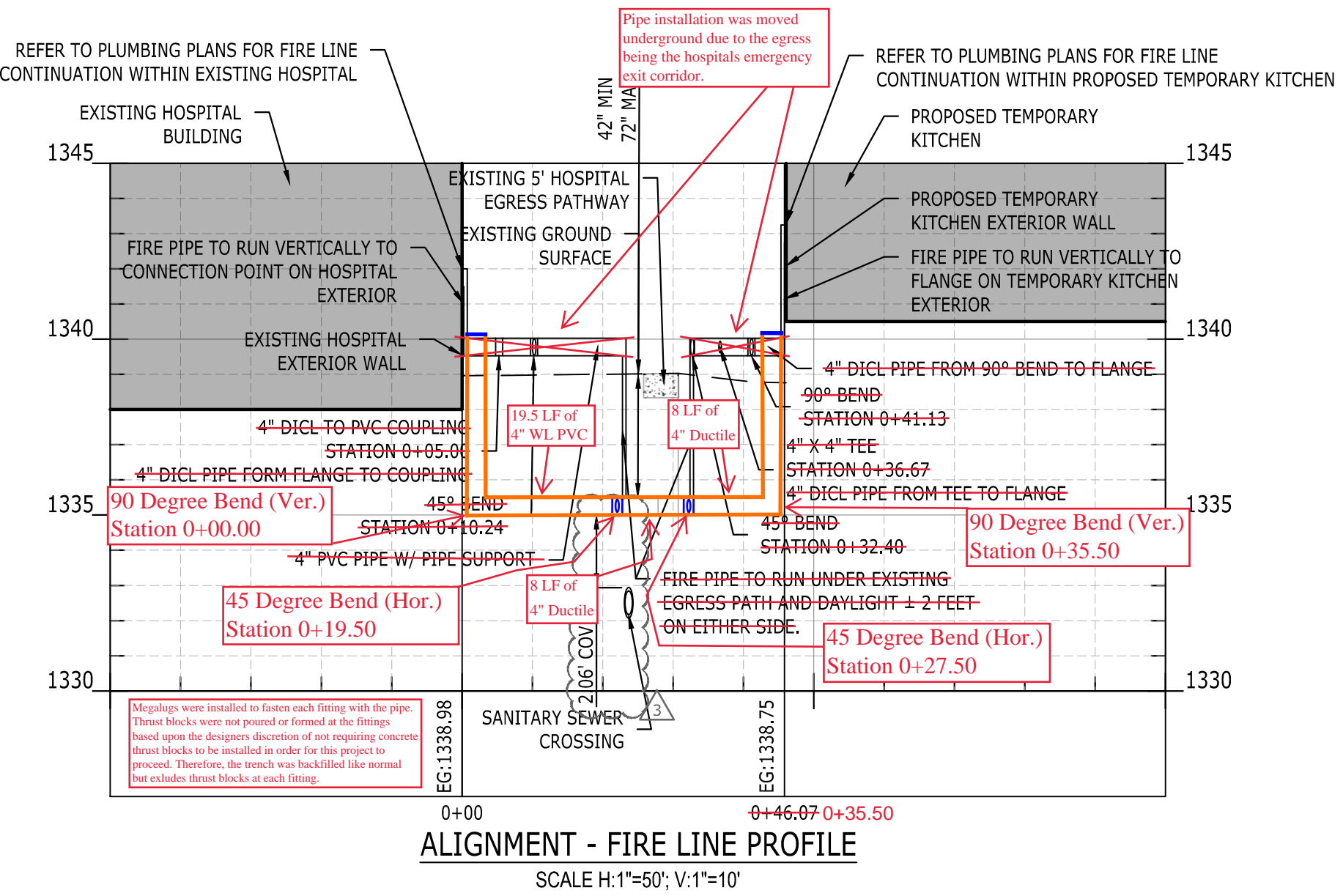
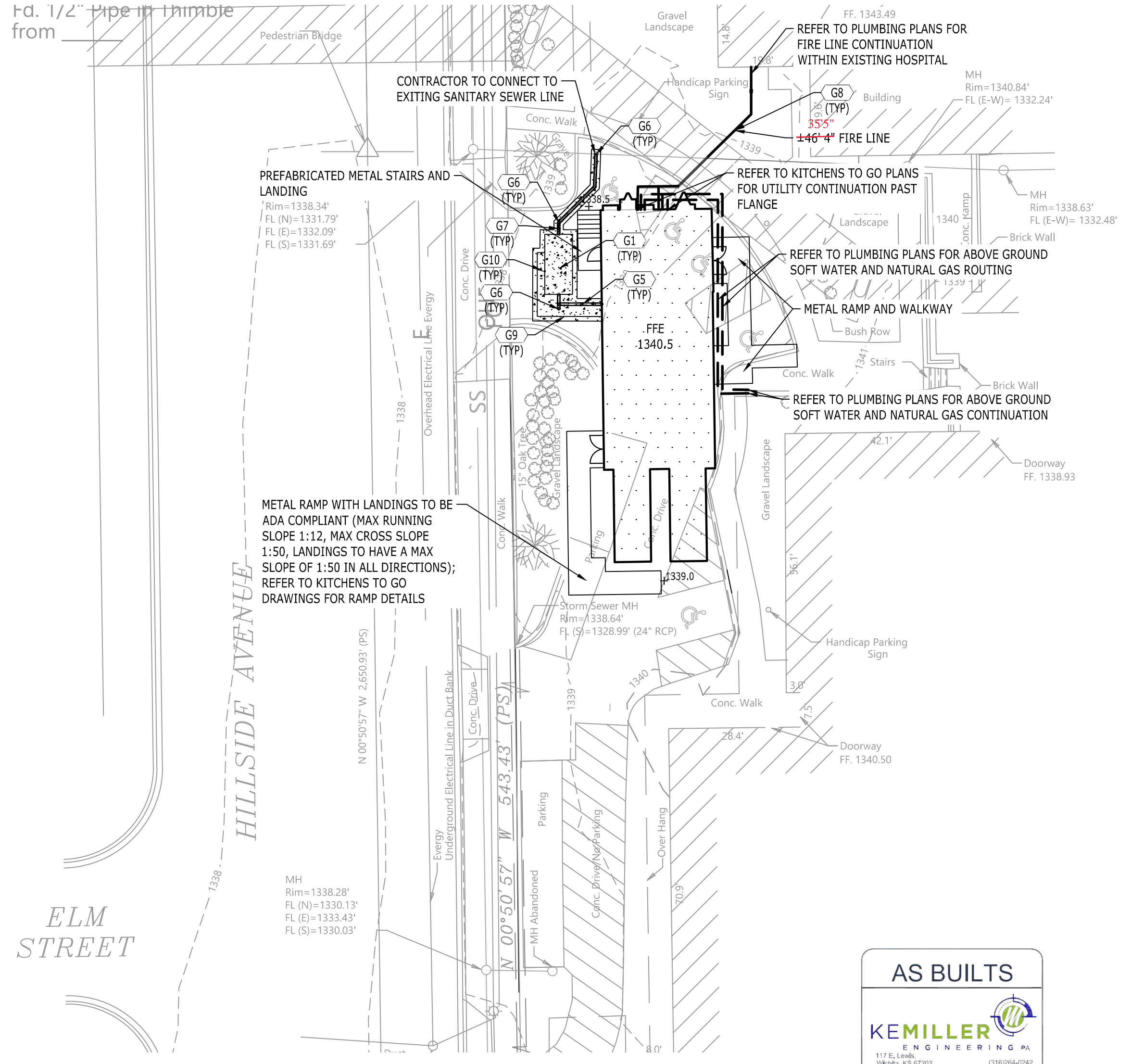
- SANITARY SEWER LINES SHALL BE AS SPECIFIED ON THE PLANS. DUCTILE IRON PIPE (DIP) SHALL BE CLASS 52, POLYVINYLCHLORIDE PIPE (PVC) SHALL BE SCHEDULE 40.
- THE CONTRACTOR SHALL REQUEST UTILITY LOCATION (811) AND VERIFY LOCATION OF ALL OTHER PRIVATE UTILITIES PRIOR TO CONSTRUCTION. THE CONTRACTOR SHALL PROTECT EXISTING UTILITIES FROM DAMAGE AND REPAIR IF DAMAGED PER PROVIDER REQUIREMENTS AT THE CONTRACTOR'S EXPENSE. COORDINATE ALL WORK AROUND EXISTING UTILITIES WITH CORRESPONDING PROVIDER.
- THE CONTRACTOR SHALL COORDINATE WITH THE OWNERS OF EACH UTILITY AND VERIFY THE SCOPE OF INSTALLATIONS OR RELOCATIONS THAT WILL BE REQUIRED AND IMPACT EACH COULD HAVE ON THE SCHEDULE OF THE PROJECT.
- MAINTAIN 10' HORIZONTAL SEPARATION AND 2' VERTICAL SEPARATION BETWEEN SANITARY SEWER LINES AND WATER LINES.
- THE CONTRACTOR SHALL BE RESPONSIBLE FOR THE SEQUENCING OF INSTALLATION OF THE UTILITIES TO AVOID CONFLICTING HORIZONTAL AND VERTICAL LOCATIONS.
- THE CONTRACTOR SHALL VERIFY THE EXACT LOCATION AND ELEVATION OF THE PROPOSED SEWER CONNECTION POINT PRIOR TO INSTALLATION OF NEW LINES. CONTRACTOR TO NOTIFY ENGINEER OF ANY DISCREPANCIES.
- CONNECTIONS TO EXISTING MANHOLES SHALL BE MADE UTILIZING THE CORING AND RESILIENT SEAL METHOD.
- THE CONTRACTOR SHALL VERIFY ANY PIPE LENGTHS, MATERIALS AND SIZES PROVIDED ON THE PLANS WITH FIELD CONDITIONS.
- MINIMUM SLOPE OF 6" SANITARY SEWER SERVICES SHALL BE 1%. INSTALL PER INVERTS PROVIDED ON THE PLAN AND WITH A MINIMUM 48" OF COVER WITHIN ROADWAYS AND 30" OF COVER WITHIN LANDSCAPE AREAS.
- MARK THE LOCATION OF UNDERGROUND PVC LINES WITH A #8 WIRE (STA. 0+22.81 TO STA. 0+32.90) TEST STATIONS SHALL BE INSTALLED AT EACH WIRE TERMINATION.
- TRENCHES WITHIN EXISTING PAVEMENTS SHALL BE EVENLY SAW CUT FOR REMOVAL AND COMPLETELY BACKFILLED WITH CRUSHED STONE. REPAIR ROADWAYS PER GOVERNING AGENCY STANDARDS.
- PROVIDE A MINIMUM OF 42" OF COVER OVER ALL UNDERGROUND WATER AND FIRE LINES (STA. 0+22.81 TO STA. 0+32.40).
- THE DESIGN ENGINEER OF RECORD FOR THESE PLANS SHALL BE RESPONSIBLE TO ENSURE THE PIPE AND MATERIAL BETWEEN STA. 0+00 AND STA. 0+22.81 AND BETWEEN STA. 0+32.40 AND 0+46.07 IS IN COMPLIANCE WITH INDUSTRY STANDARDS AND INSTALLED PER THE MANUFACTURER RECOMMENDATIONS.
- ALL FIRE LINES MUST BE INSTALLED FROM THE POINT OF CONNECTION TO THE BUILDING BY A LICENSED SPRINKLER COMPANY.
- COORDINATE THE EXACT LOCATION OF THE BUILDING SERVICES WITH THE PLUMBING PLANS.
- PROVIDE ALL NECESSARY HORIZONTAL AND VERTICAL BENDS AND BLOCKING/RODDING ON WATER/FIRE LINES TO ACHIEVE THE PROPOSED ALIGNMENT SHOWN ON THE PLANS.
- BEFORE CONNECTIONS ARE MADE TO EXISTING LINES, INSTALLED LINES SHALL BE FLUSHED, TESTED, AND APPROVED BY THE GOVERNING AUTHORITY IN ACCORDANCE WITH THEIR REQUIREMENTS.
- REPAIR DAMAGE TO EXISTING FEATURES TO PRE-CONSTRUCTION CONDITION IN ACCORDANCE WITH GOVERNING AUTHORITY REQUIREMENTS IN A TIMELY MANNER.
- THE CONTRACTOR SHALL TAKE CARE TO PROPERLY COMPACT FILL WITHIN UTILITY TRENCHES AND AROUND OTHER PROJECT FEATURES TO AVOID SETTLEMENT. SETTLEMENT OCCURRING WITHIN 12 MONTHS OF COMPLETION SHALL BE REPAIRED AT THE CONTRACTOR'S EXPENSE.
- EXISTING AND NEW CASTINGS SHALL BE ADJUSTED TO MATCH FINISH GRADE.
- COORDINATE GAS SERVICE, ELECTRICAL SERVICE, AND COMMUNICATION SERVICES WITH THE APPROPRIATE PROVIDER AND PAY NECESSARY FEES FOR INSTALLATION.
- PER PLUMBING SHEET P101, "ALL OUTDOOR EXPOSED WATER PIPING (DOMESTIC AND FIRE) AND GREASE WASTE PIPING (INCLUDING P-TRAPS) SHALL BE PROVIDED WITH HEAT TRACE AT 5 WATTS PER FOOT, 1" INSULATION, AND ALUMINUM JACKET. HEAT TRACE VOLTAGE TO BE 120 V / 60 AND PROVIDED WITH CONTROL PANEL. COORDINATE CONTROL PANEL LOCATIONS WITH ELECTRICAL CONTRACTOR."

Stormwater Certification:
 New Development or (redevelopment)
 Stormwater Permit # N/A
 NOI Permit # N/A

These construction plans were prepared in accordance with the current Stormwater management Regulations as set forth in the City of Wichita's Stormwater Management Ordinance 16.32 and the policies/guidelines presented in the Wichita/Sedgwick County Stormwater Manual.

Site Area (Acres) = 0.11
 Disturbed Area (Acres) = 0.11
 Water Quality Treatment: N/A
 Downstream Channel Protection: N/A
 Detention: N/A
 The BMP used for this development is SILT FENCE

NOTE: SITE GRADING WILL NOT CAUSE ADDITIONAL ADVERSE DRAINAGE IMPACTS ONTO NEIGHBORING PROPERTIES



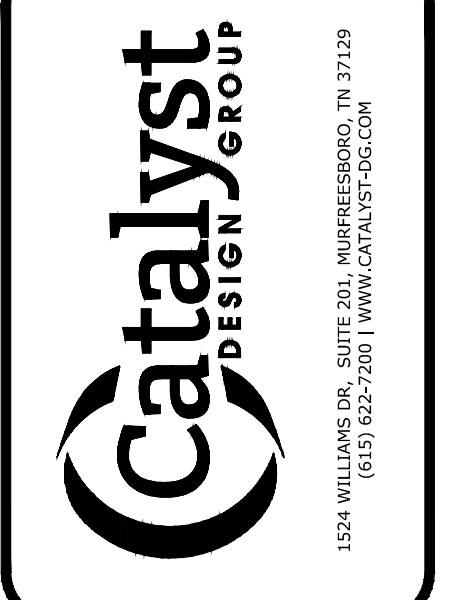
GRADING & DRAINAGE KEYNOTES

CODE	DESCRIPTION	DET #/SHT #
G1	GREASE TRAP (REFER TO PLUMBING PLANS FOR DETAILS)	
G2	4" PVC SANITARY SEWER LINE	
G3	6" SANITARY SEWER LINE	
G5	SEWER SERVICE LINE FOR MOBILE KITCHEN	
G6	CLEANOUT	
G7	SAMPLING WELL	
G8	4" UNDERGROUND FIRE LINE	
G9	4" UNDERGROUND GREASE TRAP GAS VENT	
G10	CONCRETE PAVEMENT	

NOTE: ALL PROPOSED SANITARY SEWER LINES SHALL HAVE A SLOPE OF NO LESS THAN 1%

LEGEND

BUILDING	[Symbol]
CONCRETE PAVEMENT	[Symbol]
CONCRETE SIDEWALK	[Symbol]
HEAVY DUTY PAVEMENT	[Symbol]
LIGHT DUTY PAVEMENT	[Symbol]
PAINTED STRIPE	[Symbol]
CONCRETE CURB	[Symbol]
CENTERLINE	[Symbol]
TACTILE WARNING	[Symbol]



WESLEY MEDICAL CENTER, INC.
 550 N. HILLSIDE ST.
 WICHITA, KS 67214



WESLEY MEDICAL CENTER
 TEMPORARY KITCHEN
 WICHITA, KANSAS

NO.	DATE	DESCRIPTION
1	06/17/2024	Amendment # 4
2	06/05/2024	Amendment # 3
3	04/30/2024	Amendment # 2
4	04/19/2024	Amendment # 1

LAYOUT, GRADING & UTILITIES PLAN
 PROJECT NUMBER: 20230070
 DRAWING NUMBER: C2.0