

**CURVE #1**  
Curve Data Based on Centerline  
Rad = 150', Delta = 56°13'43", Tangent = 80.14',  
Arc = 142.21', L.C. = 141.41', Def/FT = 11.45897 Min.

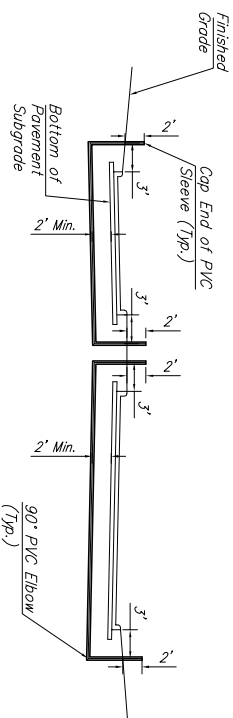
Station	Arc	FACE CHORD LENGTHS	Def	T. Def
2+82.88	8	8	0.00000	0.00000
3+00.00	17.12	14.26	19.96	376.10
3+25.00	25.00	20.81	29.13	436.28
3+50.00	25.00	20.81	29.13	436.28
3+75.00	25.00	20.81	29.13	436.28
4+00.00	30.08	25.00	20.81	436.28
4+25.00	25.00	20.81	29.13	436.28
4+50.00	25.00	20.81	29.13	436.28
4+75.00	25.00	20.81	29.13	436.28
5+00.00	30.08	25.00	20.81	436.28

**CURVE #2**  
Curve Data Based on Centerline  
Rad = 150', Delta = 56°13'43", Tangent = 80.17',  
Arc = 142.26', L.C. = 141.41', Def/FT = 11.45893 Min.

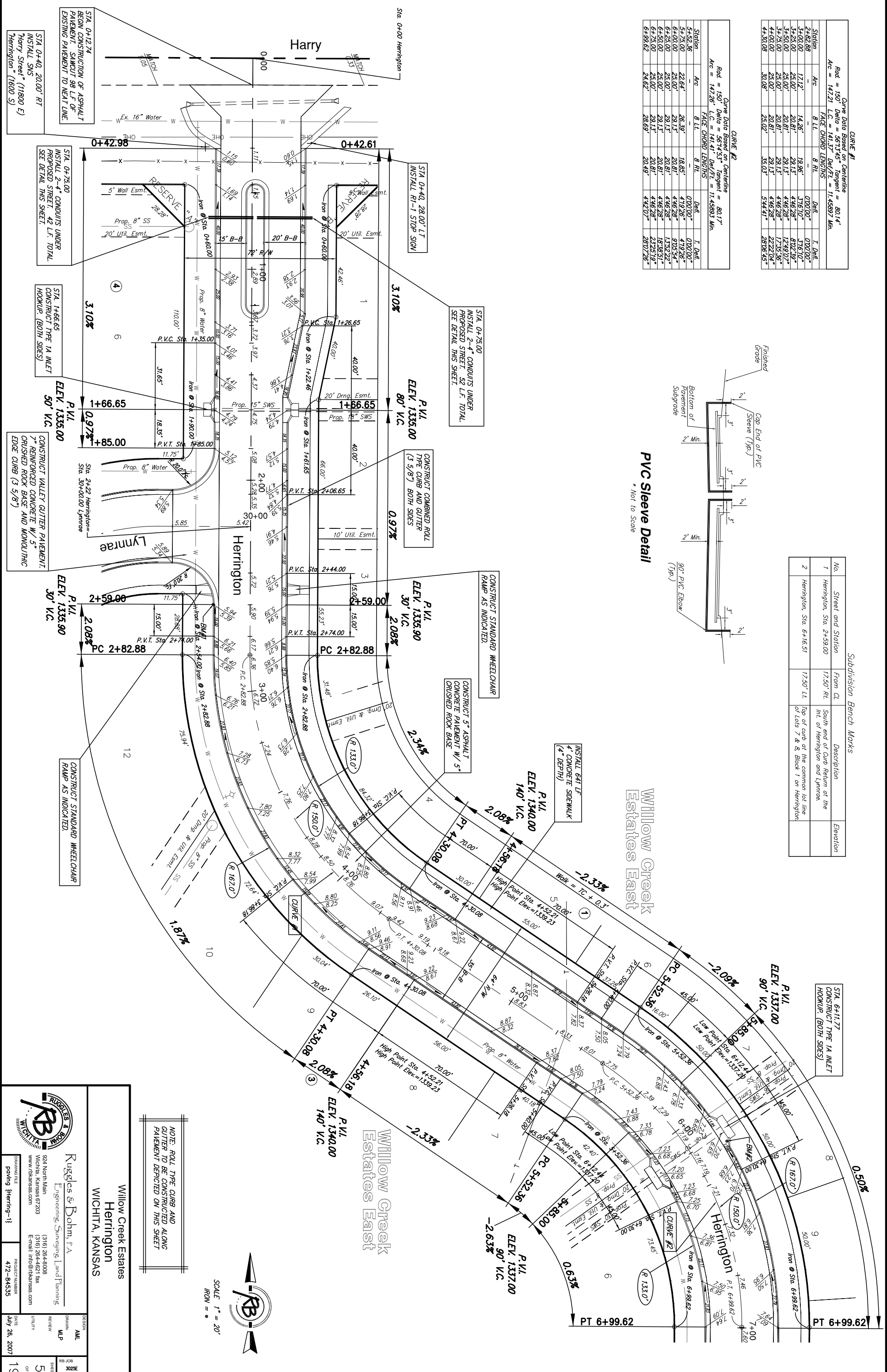
Station	Arc	FACE CHORD LENGTHS	Def	T. Def
5+52.36	8	8	0.00000	0.00000
5+75.00	22.64	26.39	18.65	479.26
6+00.00	25.00	29.13	20.81	436.28
6+25.00	25.00	29.13	20.81	436.28
6+50.00	25.00	29.13	20.81	436.28
6+75.00	25.00	29.13	20.81	436.28
7+00.00	24.62	28.69	20.49	442.07

Subdivision Bench Marks

No.	Street and Station	From CL	Description	Elevation
1	Herrington, Sta. 2+59.00	17.50' Rt.	South end of Cub Return at the Int. of Herrington and Lynnrae.	
2	Herrington, Sta. 6+16.51	17.50' Lt.	Top of curb at the common lot line of Lots 7 & 8, Block 1 on Herrington.	



**PVC Sleeve Detail**  
\* Not to Scale



**RUGGLES & BOHM, P.A.**  
Engineering, Surveying, Land Farming  
924 North Main  
Winchita, Kansas 67203  
www.rkbks.com  
(316) 264-8008  
(316) 264-4821 fax  
E-mail: info@rkbks.com

PROJECT NUMBER: 472-84535  
DATE: JULY 26, 2007

DESIGN: AML  
DRAWN: MJP  
REVIEW: MJP  
UTILITY

SCALE: 1" = 20'  
IRON = ●

NOTE: ROLL TYPE CURB AND GUTTER TO BE CONSTRUCTED ALONG PAVEMENT DEPICTED ON THIS SHEET

STA 0+42.98  
INSTALL 2-4" CONDUITS UNDER PROPOSED STREET. 42 L.F. TOTAL. SEE DETAIL THIS SHEET.

STA 0+42.98  
RESERVE 28.28'  
5' Wall Esmt.  
Prop. 8" SS  
20' Util. Esmt.

STA 0+42.98  
INSTALL 2-4" CONDUITS UNDER PROPOSED STREET. 42 L.F. TOTAL. SEE DETAIL THIS SHEET.

STA 0+42.98  
INSTALL 2-4" CONDUITS UNDER PROPOSED STREET. 42 L.F. TOTAL. SEE DETAIL THIS SHEET.

STA 0+42.98  
INSTALL 2-4" CONDUITS UNDER PROPOSED STREET. 42 L.F. TOTAL. SEE DETAIL THIS SHEET.

STA 0+42.98  
INSTALL 2-4" CONDUITS UNDER PROPOSED STREET. 42 L.F. TOTAL. SEE DETAIL THIS SHEET.

STA 0+42.98  
INSTALL 2-4" CONDUITS UNDER PROPOSED STREET. 42 L.F. TOTAL. SEE DETAIL THIS SHEET.

STA 0+42.98  
INSTALL 2-4" CONDUITS UNDER PROPOSED STREET. 42 L.F. TOTAL. SEE DETAIL THIS SHEET.

STA 0+42.98  
INSTALL 2-4" CONDUITS UNDER PROPOSED STREET. 42 L.F. TOTAL. SEE DETAIL THIS SHEET.

STA 0+42.98  
INSTALL 2-4" CONDUITS UNDER PROPOSED STREET. 42 L.F. TOTAL. SEE DETAIL THIS SHEET.

STA 0+42.98  
INSTALL 2-4" CONDUITS UNDER PROPOSED STREET. 42 L.F. TOTAL. SEE DETAIL THIS SHEET.

STA 0+42.98  
INSTALL 2-4" CONDUITS UNDER PROPOSED STREET. 42 L.F. TOTAL. SEE DETAIL THIS SHEET.

STA 0+42.98  
INSTALL 2-4" CONDUITS UNDER PROPOSED STREET. 42 L.F. TOTAL. SEE DETAIL THIS SHEET.