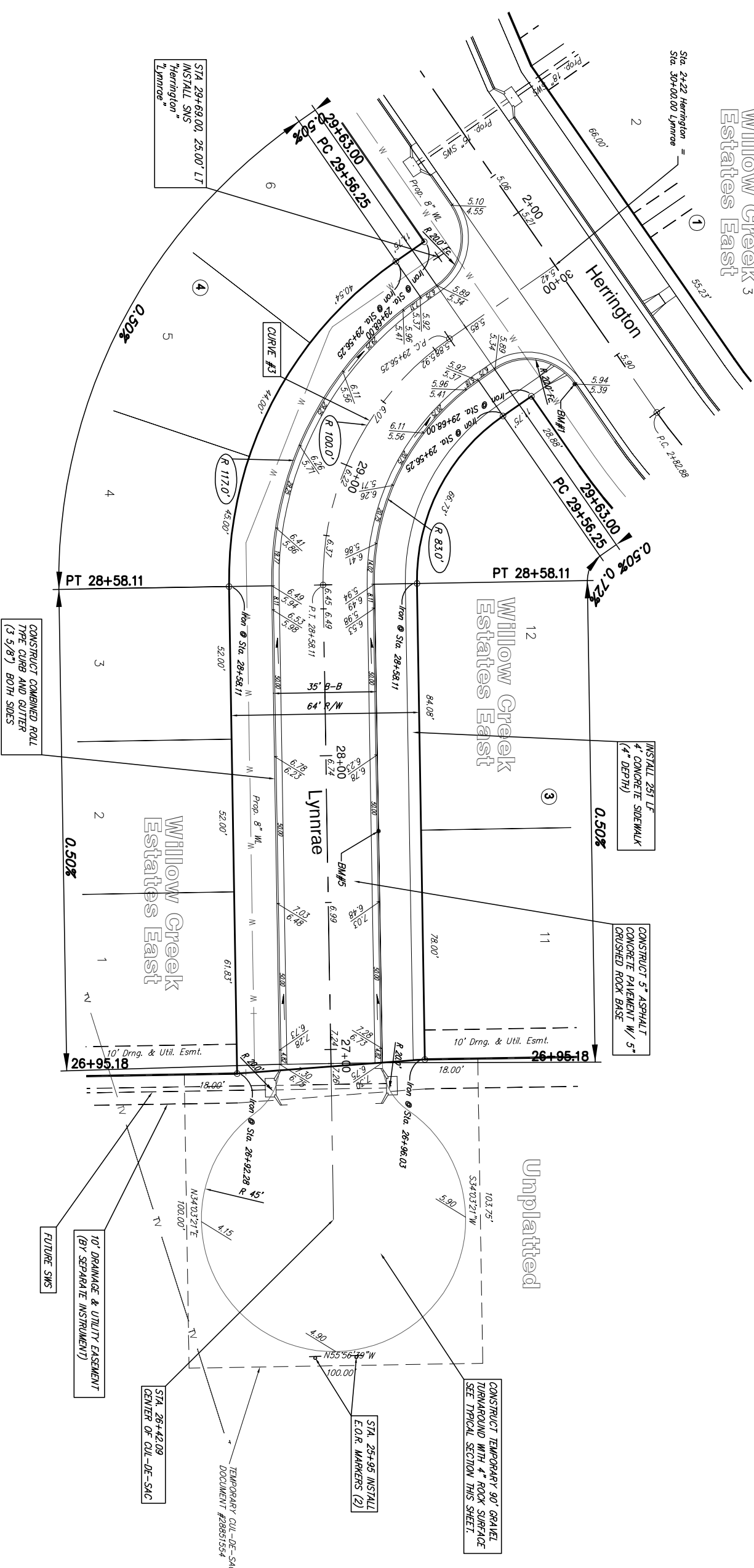


No.	Street and Station	From CL	Description	Elevation
1	Herrington, Sta. 2+59.00	17.50' Rt.	South end of Curb Return of the Rt. of Herrington and Lynnrae	
5	Lynnrae, Sta. 27+74.03	17.50' Rt.	Top of curb at the common lot line of Lots 11 & 12, Block 3 on Lynnrae	

Subdivision Bench Marks

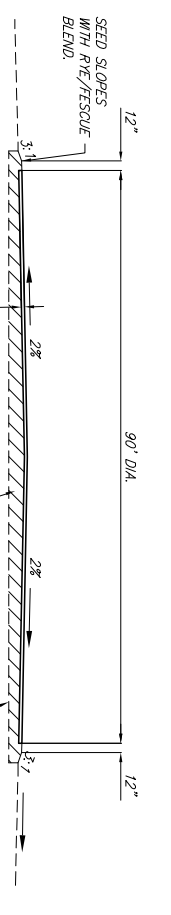
Willow Creek Estates East



CURVE #3

Curve Data Based on Centerline
 Rad. = 100' Delta = 56.1345 Tangent = 33.43'
 Arc = 98.14' L.C. = 94.25' Del/Fl. = 17.18846 Min.

Station	FACE CHORD LENGTHS		Defl.	T. Defl.
	B LI.	B RI.		
28+58.11	-	12.65'	0.0000°	0.0000°
28+73.00	16.89'	4.5018'	4.5018°	4.5018°
29+02.00	23.00'	31.17'	18.70°	12.0001°
29+23.00	23.00'	31.17'	18.70°	19.0343°
29+56.25	31.25'	23.34'	8.5708°	28.0857°



**Willow Creek Estates
Lynnrae
WICHITA, KANSAS**

Rugles & Bohm, P.A.
Engineering, Surveying, Land Farming

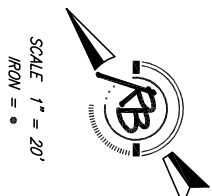
924 North Main
Wichita, Kansas 67203
www.rtkansas.com

(316) 264-8008
(316) 264-4821 fax
E-mail: info@rtkansas.com

DESIGN: **AML**
DRAWN: **MLP**
REVIEW: **MLP**
UTILITY: **MLP**
DATE: **JULY 26, 2007**

PROJECT NUMBER: **472-84535**
DRAWING FILE: **plowing {Lynnrae}**
SHEET: **8** OF **19**

NOTE: ROLL TYPE CURB AND GUTTER TO BE CONSTRUCTED ALONG PAVEMENT DEPICTED ON THIS SHEET



SCALE 1" = 20'
 IRON = •