

# GENERAL NOTES:

1. THE CONTRACTOR SHALL COMPLY WITH ALL APPLICABLE SAFETY REGULATIONS. ALL CONSTRUCTION SHALL BE COMPLETED FOLLOWING CURRENT CITY STANDARD SPECIFICATIONS AND SPECIAL PROVISIONS.
2. CONTRACTOR SHALL BE REQUIRED TO PROVIDE NOTICE TO UTILITY COMPANIES A MINIMUM OF 72 HOURS PRIOR TO ANY EXCAVATION, AS FOLLOWS:

KANSAS ONE-CALL 1-316-687-2470

THE CONTRACTOR MUST NOTIFY THE FOLLOWING IN CASE OF AN EMERGENCY:

AT&T	1-800-246-8464
BLACK HILLS ENERGY	1-800-694-8989
CITY OF WICHITA WATER & SEWER	1-316-219-8921
CITY OF WICHITA STORMWATER	1-316-268-4090
CITY OF WICHITA TRAFFIC	1-316-268-4034
COX COMMUNICATIONS	1-888-249-3530
KANSAS GAS SERVICE	1-888-482-4950
EVERGY	1-800-544-4857

3. UTILITY SERVICE LINES, POLES, ETC., SHALL BE ADJUSTED AS NECESSARY BY OTHERS PRIOR TO CONSTRUCTION UNLESS THE PLANS SPECIFICALLY CALL FOR THEIR ADJUSTMENT BY THE CONTRACTOR, OR UNLESS THE PLANS SPECIFICALLY IDENTIFY A UTILITY TO BE ADJUSTED BY ITS OWNER DURING CONSTRUCTION. EXISTING UTILITIES AND THEIR LOCATION, AS SHOWN ON THE PLANS, REPRESENT THE BEST INFORMATION OBTAINABLE FOR DESIGN. THE CONTRACTOR SHALL BE REQUIRED TO WORK AROUND EXISTING UTILITIES WITHIN THE RIGHT-OF-WAY WHICH DO NOT CONFLICT WITH PROPOSED CONSTRUCTION.
4. RUBBLE FROM THE REMOVAL OF MISCELLANEOUS STRUCTURES AND EXCESS EXCAVATION WHICH SHALL BE WASTED SHALL BE DISPOSED OF ON SITES TO BE PROVIDED BY THE CONTRACTOR. THESE SITES SHALL BE APPROVED BY THE ENGINEER AS TO SUITABILITY, APPEARANCE AND SITE LOCATION. LOCATIONS, IN THE OPINION OF THE ENGINEER, THAT WILL LEAVE AN UNSIGHTLY APPEARANCE WILL NOT BE APPROVED. ALL DISPOSAL SITES MUST BE APPROVED BY THE KANSAS DEPARTMENT OF HEALTH AND ENVIRONMENT. MATERIAL EITHER STOCKPILED OR DISPOSED OF IN A FLOOD PLAIN WILL REQUIRE A KANSAS STATE BOARD OF AGRICULTURE PERMIT. ANY MATERIAL DUMPED IN WATERS OF THE UNITED STATES OR WETLANDS IS SUBJECT TO U.S. CORPS OF ENGINEERS PERMITTING REGULATIONS. ANY MATERIAL BURIED OR STOCKPILED BEYOND APPROVED CONSTRUCTION LIMITS WILL REQUIRE ADDITIONAL ARCHAEOLOGICAL INVESTIGATIONS UNLESS BURIED IN A PREVIOUSLY APPROVED BORROW LOCATION.
5. TREES AND SHRUBS IN PUBLIC RIGHT-OF-WAY WHICH ARE IN DIRECT CONFLICT WITH PROPOSED NEW CONSTRUCTION SHALL BE REMOVED BY THE CONTRACTOR WITH THE CITY ENGINEER'S APPROVAL. TREES AND SHRUBS WHICH ARE NOT IN DIRECT CONFLICT WITH PROPOSED NEW CONSTRUCTION SHALL BE SAVED AND PROTECTED FROM DAMAGE.
6. THE CONTRACTOR SHALL GIVE ALL PROPERTY OWNERS AND/OR TENANTS OF DEVELOPED PROPERTY ADJUTING THE CONSTRUCTION OF THIS PROJECT A MINIMUM OF TEN (10) DAYS NOTICE PRIOR TO START OF CONSTRUCTION.
7. THE CONTRACTOR SHALL BE RESPONSIBLE FOR PRESERVING PROPERTY IRONS. THE CONTRACTOR WILL BE REQUIRED TO RE-ESTABLISH ANY PROPERTY IRONS WHICH ARE DAMAGED OR DESTROYED BY HIS CONSTRUCTION OPERATIONS. SUCH IRONS SHALL BE RE-ESTABLISHED BY A LICENSED LAND SURVEYOR IN ACCORDANCE WITH STATE LAWS.
8. THE ENGINEERING DIVISION SHALL FIELD LOCATE WATER VALVES ONE TIME DURING CONSTRUCTION WHEN REQUESTED BY THE CONTRACTOR. IT SHALL BE THE CONTRACTOR'S RESPONSIBILITY TO PRESERVE SUCH FIELD LOCATIONS DURING THE CONSTRUCTION PROCESS. WATER VALVES, VALVE BOXES OR FIRE HYDRANTS DAMAGED DURING CONSTRUCTION SHALL BE REPAIRED BY CONTRACTOR AT HIS OWN EXPENSE. VALVE BOXES AND WATER METERS WITHIN THE PROJECT LIMITS SHALL BE ADJUSTED TO MATCH FINAL GRADES BY THE CONTRACTOR.
9. THE CONTRACTOR SHALL NOTIFY THE INSPECTING ENGINEER AND DAWNITA REINHARDT WITH THE CITY OF WICHITA AT 316-650-0740 WITH THE ANTICIPATED CONSTRUCTION START DATE, AND NOTIFY THEM OF PROJECT COMPLETION, STAKING AND INSPECTION FOR THIS PROJECT SHALL BE THE RESPONSIBILITY OF THE CONTRACTOR.

10. IF TRAFFIC WILL BE IMPACTED BY CONSTRUCTION, A TRAFFIC CONTROL PLAN MUST BE SUBMITTED AND APPROVED BY THE CITY TRAFFIC ENGINEER, MIKE ARMOUR, AT TRAFFIC@WICHITA.GOV BEFORE CONSTRUCTION CAN BEGIN. THE CONTRACTOR SHALL BE RESPONSIBLE FOR ALL TRAFFIC CONTROL MEASURES TO FACILITATE CONSTRUCTION. ALL CONSTRUCTION ZONE MARKINGS AND SIGNAGE SHALL CONFORM TO THE LATEST VERSION OF THE MANUAL ON UNIFORM TRAFFIC CONTROL DEVICES (MUTCD) AS PUBLISHED BY THE U.S. DEPARTMENT OF TRANSPORTATION, FEDERAL HIGHWAY ADMINISTRATION. ALL COSTS ASSOCIATED WITH CONSTRUCTION MARKINGS AND SIGNAGE SHALL BE THE CONTRACTOR'S RESPONSIBILITY.

11. ALL ELEVATIONS SHOWN ARE NAVD 88.
12. ALL AREAS DISTURBED DURING CONSTRUCTION THAT WILL NOT BE UNDER PROPOSED PAVEMENT SHALL BE RESTORED TO MATCH EXISTING CONDITIONS.
13. ANY SIDEWALK, DRIVE APPROACH, CURB, OR STREET PAVEMENT REMOVED TO CONSTRUCT PROJECT MUST HAVE A PAVEMENT CUT PERMIT AND BE REPLACED BY THE CITY CONTRACTOR. PERMITS CAN BE OBTAINED BY CALLING 316-268-4501 OR 316-268-4480.
14. ALL APPLICABLE FEES (TAP, EQUITY, IN LIEU OF & MAIN BENEFIT) MUST BE PAID BEFORE ANY CONNECTIONS CAN BE MADE ON THIS PROJECT. QUOTES ON FEES CAN BE OBTAINED BY CALLING 316-268-4555.
15. CITY MAINTENANCE OF SANITARY SEWER MAINS ENDS AT LAST STRUCTURE WITHIN THE EASEMENT OR RIGHT-OF-WAY.
16. ALL STUBS AND CAPPED PIPES SHALL BE LOCATED WITH GREEN PLASTIC TAPE IN THE SAME MANNER AS RISERS.
17. CONNECTING TO EXISTING MANHOLES: PRIOR TO LAYING SEWER LINES USING EXISTING STUBS IN EXISTING MANHOLES, THE CONTRACTOR SHALL EXPOSE AND VERIFY THE ELEVATION, GRADE OR ALIGNMENT OF EXISTING STUBS AND NOTIFY THE ENGINEER OF ANY DEVIATION FROM THE PLANS. WHERE THE STUB IS UNUSABLE DUE TO ELEVATION, GRADE OR ALIGNMENT, THE CONTRACTOR SHALL REMOVE THE STUB AND PLUG THE HOLE, AND RESHAPE THE EXISTING MANHOLE INVERT TO PROVIDE SMOOTH FLOW. WHERE CONNECTING TO AN EXISTING MANHOLE THAT DOES NOT HAVE AN EXISTING STUB, THE CONTRACTOR SHALL CORE-CUT INTO EXISTING MANHOLE WALL TO MAKE CONNECTION USING APPROVED WATER-STOP GASKET, AND RESHAPE THE EXISTING MANHOLE INVERT TO PROVIDE SMOOTH FLOW. THE COST TO CONNECT TO EXISTING MANHOLES IS INCIDENTAL TO THE PROJECT.
18. CONTRACTOR SHALL LIMIT THE EXTENT OF TRENCH OPEN OVERNIGHT AND WEEKENDS TO LESS THAN 50 FEET.
19. CONTRACTOR SHALL PROVIDE POSITIVE DRAINAGE AWAY FROM ALL MANHOLE COVERS.
20. THE CONTRACTOR SHALL PREVENT ANY CONSTRUCTION DEBRIS FROM ENTERING THE EXISTING SANITARY SEWER DURING CONSTRUCTION.
21. THE CONTRACTOR SHALL BE RESPONSIBLE FOR MAINTAINING CONTINUOUS FLOW OF SEWAGE THROUGH CONSTRUCTION. CONTRACTOR'S PROPOSED METHOD FOR MAINTAINING SEWAGE FLOW SHALL BE SUBMITTED AND APPROVED BY THE SEWER MAINTENANCE DIVISION (316-268-4073) PRIOR TO STARTING AND BY-PASSING OF SEWAGE FLOWS.
22. ANY OVER-EXCAVATION FROM MANHOLE AND PIPE REMOVAL SHALL BE BACKFILLED WITH AB-3 COMPACTED TO 90 TO 95 PERCENT, PER ASTM D698.
23. THE CONTRACTOR SHALL PROTECT FROM DAMAGE AND SUPPORT EXISTING UTILITIES THROUGH CONSTRUCTION AS APPROVED BY THE UTILITY OWNER AND THE ENGINEER AT THE CONTRACTOR'S EXPENSE.

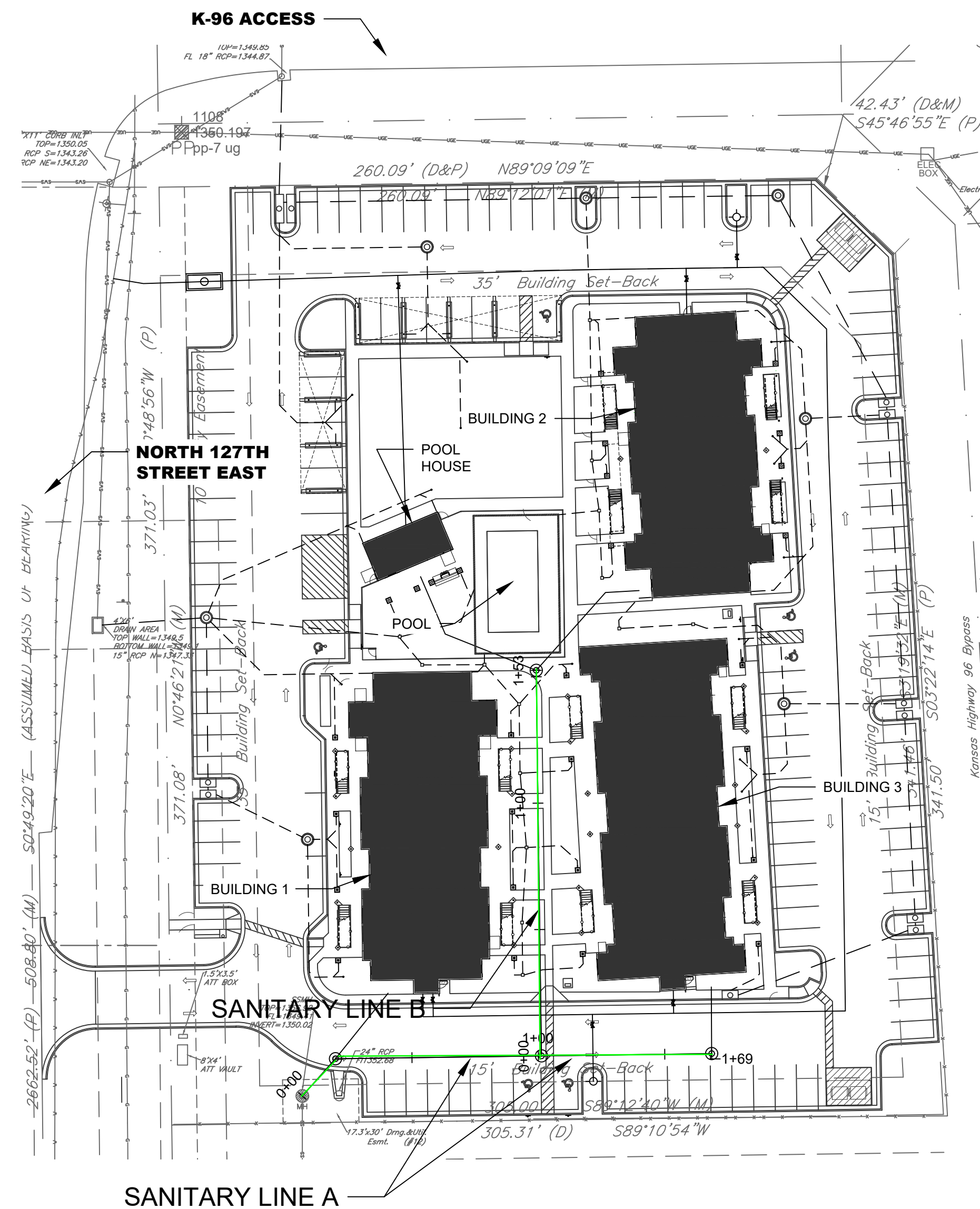
## Benchmark

BM 1  
CHISELED "\*" ON TOP OF CURB INSIDE OF A SQUARE CUT AT THE SOUTHWEST CORNER OF CURB INLET AT THE SOUTHEAST CORNER OF NORTH 127TH STREET EAST AND I-35TH STREET EAST RAMP. ELEVATION = 1350.08 (NAVD '88)

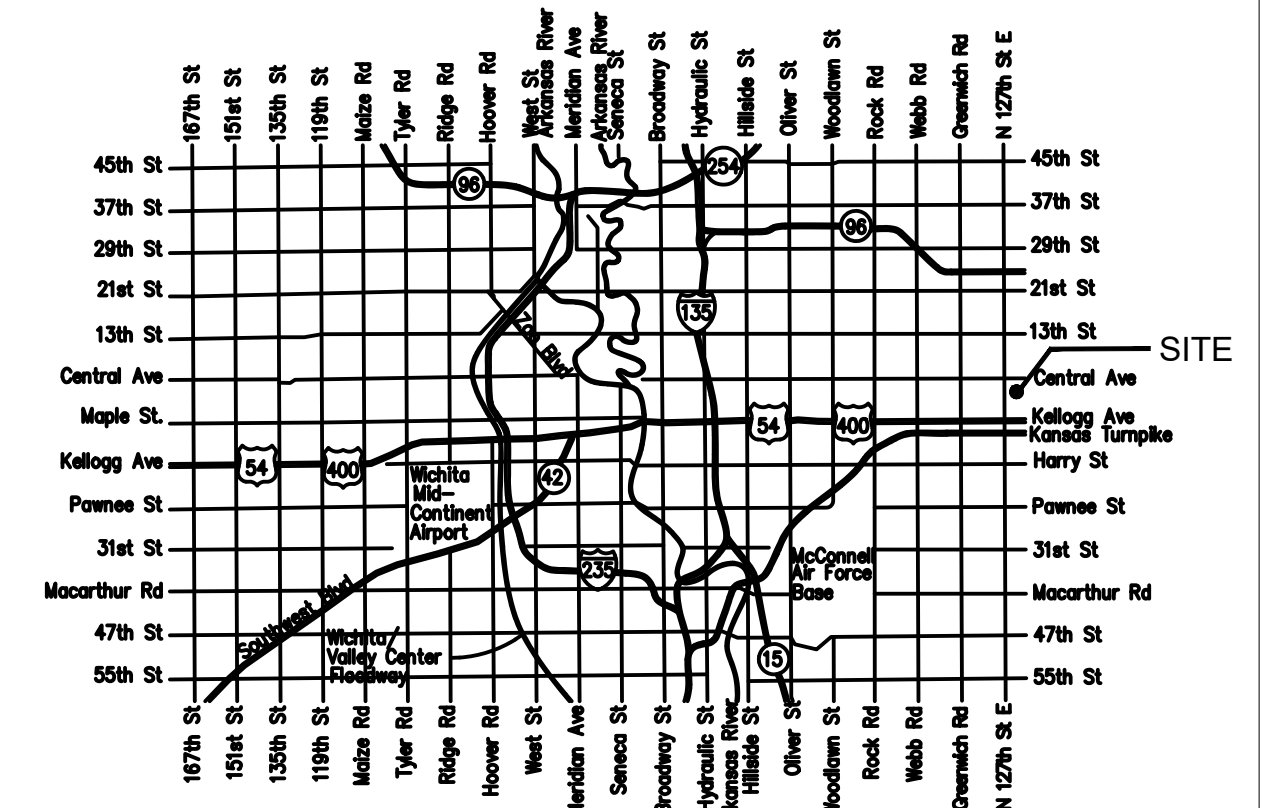
# SANITARY SEWER SYSTEM to serve VERANDAS AT CRESTVIEW APARTMENTS 300 NORTH 127TH STREET EAST CITY OF WICHITA, KANSAS, 67206

Project Number  
PPS-2021-002934 (ORG CODE 53030982)

Date: 2022-10-13  
Inspector: A.Thompson  
Design/Inspecting Firm: GLMV architecture/Kaw Valley Engineering, Inc.  
Contractor: Jaco General Contracting Inc.  
Subcontractor: Sooter Excavating LLC  
Built in general conformance to construction plans, except where noted on plans.



Sheet List Table	
Sheet Number	Sheet Title
CU720	PPS COVER
CU721	PPS PLAN
CU721A	PPS PLAN
CU722	PPS DETAILS
CU723	PPS DETAILS
CE501	EROSION CONTROL DETAILS
CE502	EROSION CONTROL DETAILS
CE503	EROSION CONTROL DETAILS
CE504	EROSION CONTROL DETAILS
CE505	EROSION CONTROL DETAILS
CE506	EROSION CONTROL DETAILS



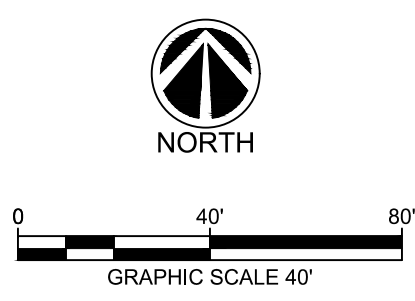
## Vicinity Map

APPROVED AS NOTED  
BY WICHITA PUBLIC WORKS ENGINEERING  
AND STORMWATER DIVISION

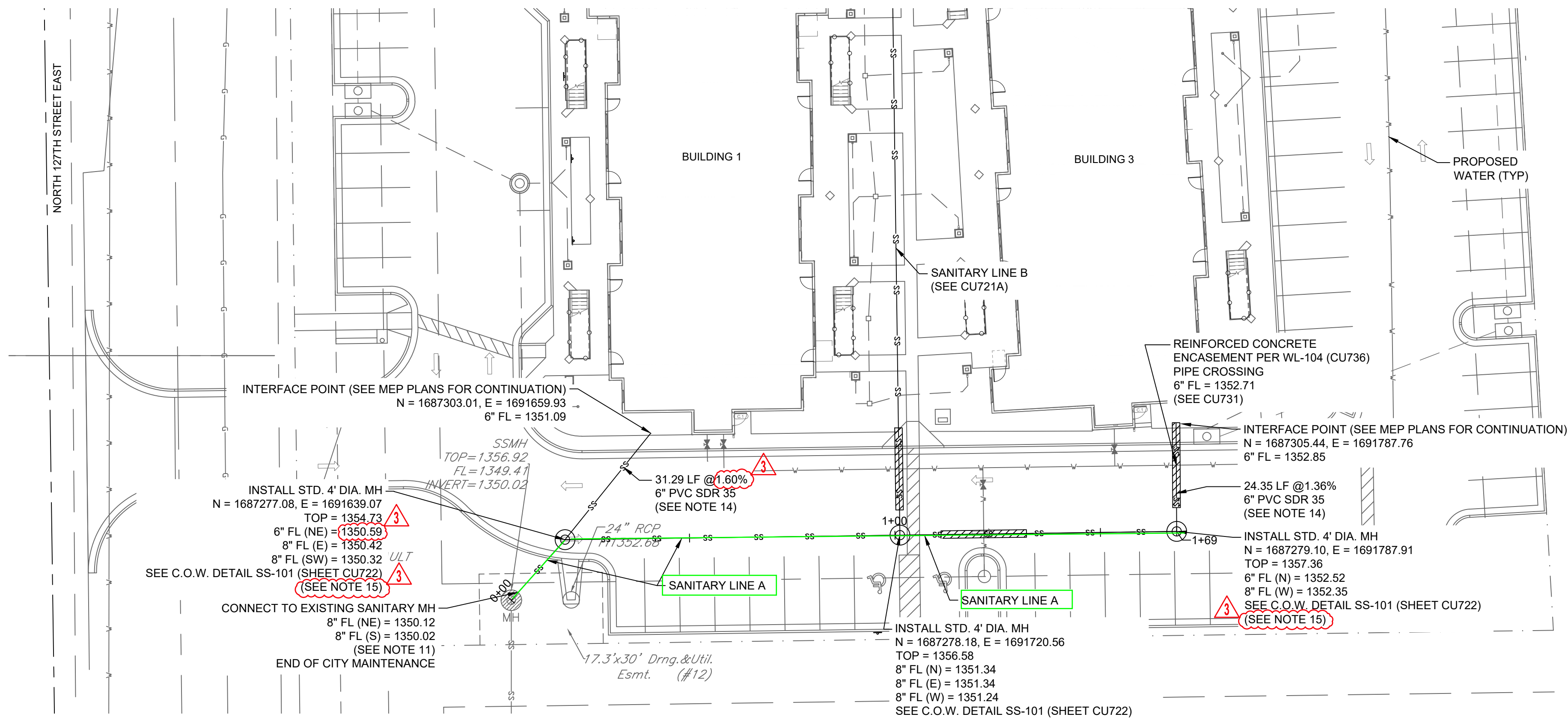
ENGINEERING: SHAWN MELLIES, 04/13/2021

UTILITIES: LADONNA LAWRENZ, 04/13/2021

NOTE TO CONTRACTORS  
INSPECTION AND TESTING FOR THIS PROJECT ARE TO BE PROVIDED BY A LICENSED CONSULTING ENGINEERING FIRM UNDER CONTRACT WITH THE OWNER/DEVELOPER. SAID INSPECTION SHALL BE IN ACCORDANCE WITH THE CITY OF WICHITA STANDARD CONSTRUCTION ENGINEERING PRACTICES AND CERTIFIED BY A LICENSED PROFESSIONAL ENGINEER IN THE STATE OF KANSAS. NO WORK SHALL BE PERFORMED BY THE CONTRACTOR WITHOUT SUCH INSPECTION NOR SHALL ANY WORK BE COMMENCED WITHOUT WRITTEN AUTHORIZATION BY CITY ENGINEERING. ALL CONSTRUCTION AND MATERIALS SHALL COMPLY WITH THE CURRENT CITY OF WICHITA SPECIFICATIONS AND STANDARDS AND SPECIAL PROVISIONS (ON FILE AND AVAILABLE AT WICHITA.GOV).  
AN APPROVED COPY OF THESE PLANS SIGNED BY CITY STAFF IS REQUIRED ON SITE.



MARCH 2021  
GLMV Architecture  
1525 E. Douglas Ave.  
Wichita, KS 67211

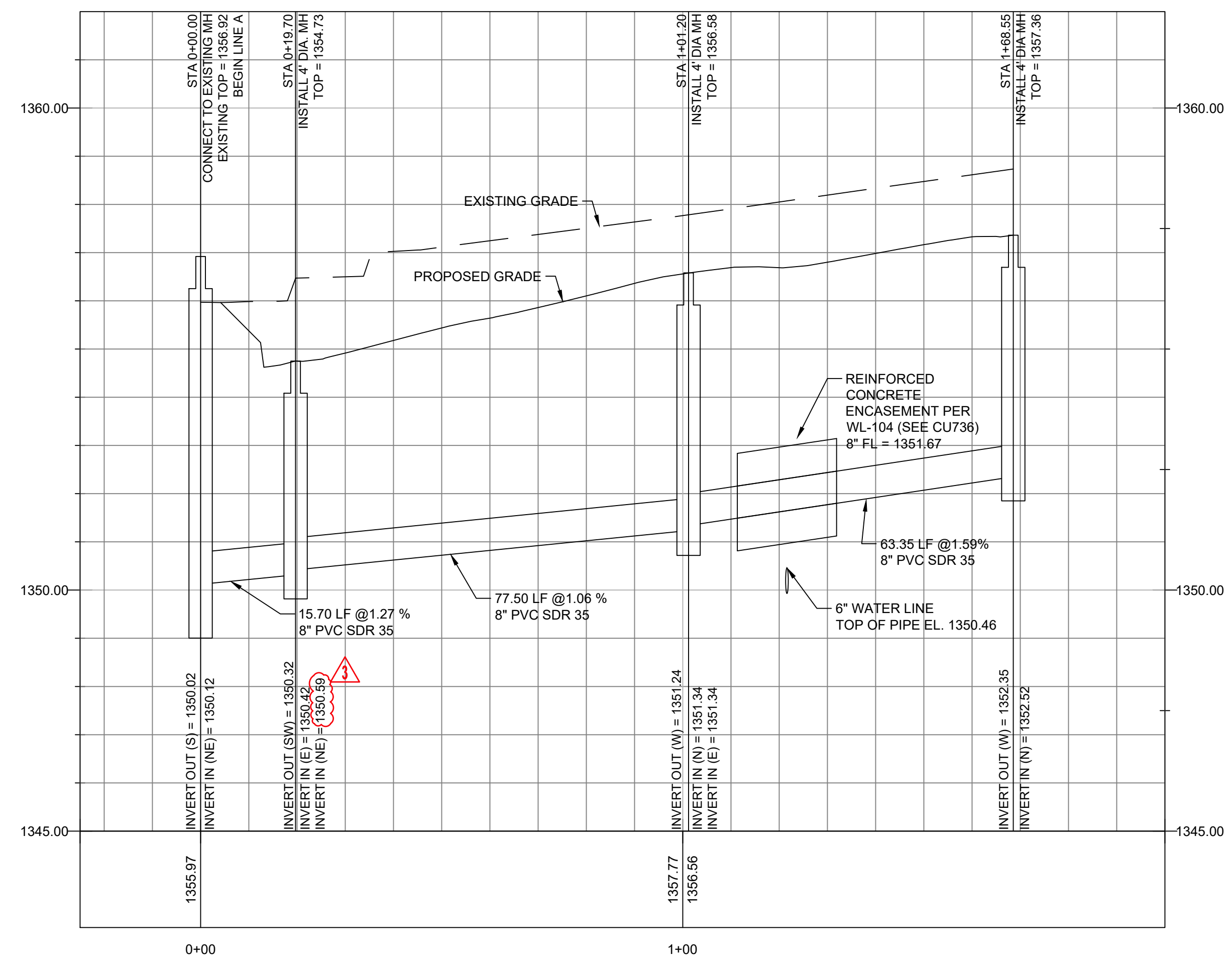
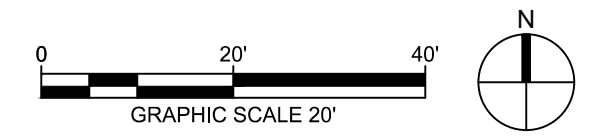


Kansas  
Crandall

**UTILITY NOTES**

- UTILITY CONSTRUCTION SHALL COMPLY WITH THE STANDARD SPECIFICATIONS, CODES, AND DETAILS OF THE CITY OF WICHITA AND UTILITY PROVIDERS.
- INSTALLATION, BEDDING, & TESTING OF UTILITY INSTALLATIONS SHALL BE AS PER CITY OF WICHITA STANDARD SPECIFICATIONS AND STANDARD SPECIAL PROVISIONS.
  - THE INFORMATION SHOWN ON THESE PLANS CONCERNING THE TYPE AND LOCATION OF UNDERGROUND UTILITIES IS NOT GUARANTEED TO BE ACCURATE OR ALL INCLUSIVE. THE CONTRACTOR IS RESPONSIBLE FOR CONTACTING ALL UTILITY COMPANIES FOR FIELD LOCATION OF ALL UNDERGROUND UTILITY LINES PRIOR TO ANY EXCAVATION AND FOR MAKING HIS OWN VERIFICATION AS TO TYPE AND LOCATION OF UNDERGROUND UTILITIES AS MAY BE NECESSARY TO AVOID DAMAGE THERE TO.
  - PROTECT ALL COMPONENTS DURING DEMOLITION / CONSTRUCTION PROCESS. MAINTAIN BMP'S THROUGHOUT THE DURATION OF CONSTRUCTION.
  - STUB ALL CONNECTIONS TO WITHIN 5' OF THE BUILDING TO PROVIDE CONNECTION INTO THE BUILDING BY MECHANICAL PLUMBING CONTRACTOR.
  - CONTRACTOR TO PROVIDE DETAILED AS-BUILT DRAWINGS TO OWNER/ENGINEER AND CITY OF WICHITA UPON COMPLETION OF ALL UTILITIES.
  - NOT USED.
  - NOT USED.
  - UTILITY TRENCH BACKFILL SHALL BE PER GEOTECHNICAL REPORT WHEN ON PRIVATE PROPERTY. BACKFILL SHALL BE PER CITY OF WICHITA SPECIFICATIONS WITHIN PUBLIC RIGHT-OF-WAY.
  - UTILITY PIPE LENGTHS ARE PROVIDED FOR INFORMATION ONLY. CONTRACTOR TO VERIFY ACTUAL LENGTHS OF PIPE REQUIRED PRIOR TO BIDDING & INSTALLING UTILITIES.
  - UTILITY CONTRACTOR TO COORDINATE BUILDING CONNECTION POINTS WITH PLUMBING PLAN AND BUILDING CONTRACTOR.
  - CONTRACTOR TO CORE DRILL INTO EXISTING STRUCTURE FOR NEW INCOMING PIPE. GROUT AND REPAIR EXISTING MANHOLE PER CITY OF WICHITA SPECIFICATIONS. RESHAPE BENCH AND INVERT TO ACCOMMODATE FLOWS.
  - MAINTAIN A MINIMUM 10-FOOT HORIZONTAL SEPARATION BETWEEN ALL WATER LINES (MAINS, SERVICES, AND FIRE HYDRANTS) AND ALL SANITARY SEWER LINES (MAINS, SERVICES, AND MANHOLES). ALL SEPARATION DISTANCES ARE TO BE MEASURED FROM EDGE-TO-EDGE, AT THE CLOSEST POINT.
  - MAINTAIN A MINIMUM OF 2-FOOT VERTICAL SEPARATION BETWEEN ALL WATER LINES (MAINS AND SERVICES) AND ALL GRAVITY SANITARY SEWER LINES (MAINS, SERVICES, AND MANHOLES) AT CROSSINGS. ALL SEPARATION DISTANCES ARE TO BE MEASURED EDGE-TO-EDGE, AT THE CLOSEST POINT. IF THE WATER PIPE IS BELOW THE SANITARY SEWER, REGARDLESS OF CLEAR SPACE, THE SANITARY SEWER SHALL BE REINFORCED CONCRETE ENCASED FOR A DISTANCE OF TEN FEET (10') EACH WAY FROM THE WATER LINE CROSSING.
  - SERVICE LINES EQUAL TO 6" AND SMALLER IN DIAMETER ARE NOT PART OF PPS PROJECT. SERVICE LINE SHOWN FOR CLARITY.
  - SERVICE STUBS TO BE CONSTRUCTED CONCURRENTLY WITH MANHOLE FOR PRIVATE PROJECT.

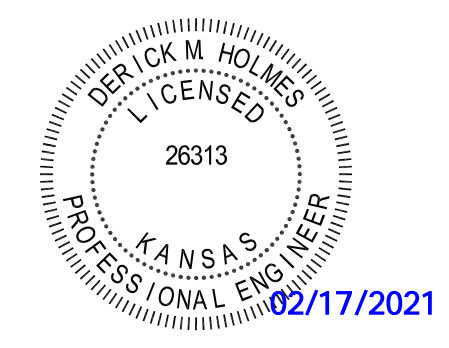
**1 PPS PLAN**  
1" = 20'-0"



**2 SANITARY LINE A PLAN & PROFILE**  
1" = 20'-0"

SCALE: HORIZONTAL 1"=20'  
SCALE: VERTICAL 1" = 2'

**2** EXTENSIVE REVISIONS PER CITY OF WICHITA COMMENTS



**VERANDAS AT CRESTVIEW APARTMENTS**  
300 N. 127TH STREET E.  
WICHITA, KS 67206

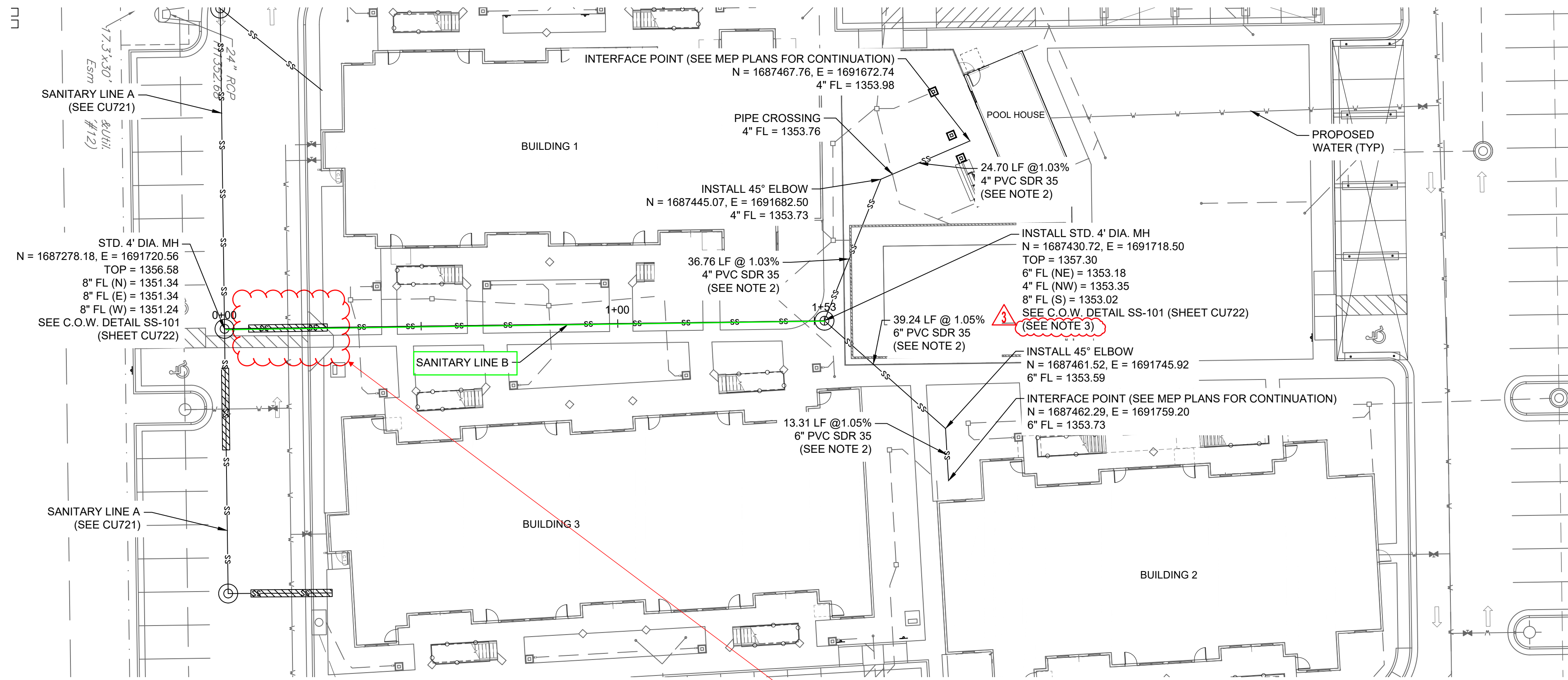
NO.	DESCRIPTION	DATE
3	CITY OF WICHITA	2/17/2021
2	CITY OF WICHITA	2/4/2021
1	MABCD / HUD	1/19/2021

PROJECT NO: 15005.20002  
DATE: 10/28/2020  
DRAWN BY: DMH  
CHKD BY: LEG

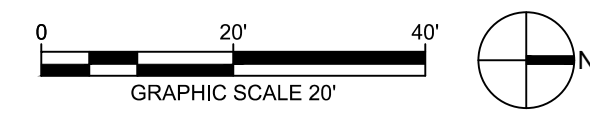
© GLMV Architecture, Inc.  
All work herein is the property of GLMV Architecture, Inc. and is not to be copied or used in any way without the express written consent of GLMV Architecture, Inc.

PPS PLAN

**CU721**



**1 PPS PLAN**  
1" = 20'-0"



- UTILITY NOTES**
- UTILITY CONSTRUCTION SHALL COMPLY WITH THE STANDARD SPECIFICATIONS, CODES, AND DETAILS OF THE CITY OF WICHITA AND UTILITY PROVIDERS.
- SEE DRAWING CU721 FOR GENERAL UTILITY NOTES APPLICABLE TO THIS DRAWING.
  - SERVICE LINES EQUAL TO 6" AND SMALLER IN DIAMETER ARE NOT PART OF PPS PROJECT. SERVICE LINE SHOWN FOR CLARITY.
  - SERVICE STUBS TO BE CONSTRUCTED CONCURRENTLY WITH MANHOLE FOR PRIVATE PROJECT.



**VERANDAS AT CRESTVIEW APARTMENTS**  
300 N. 127TH STREET E.  
WICHITA, KS 67206

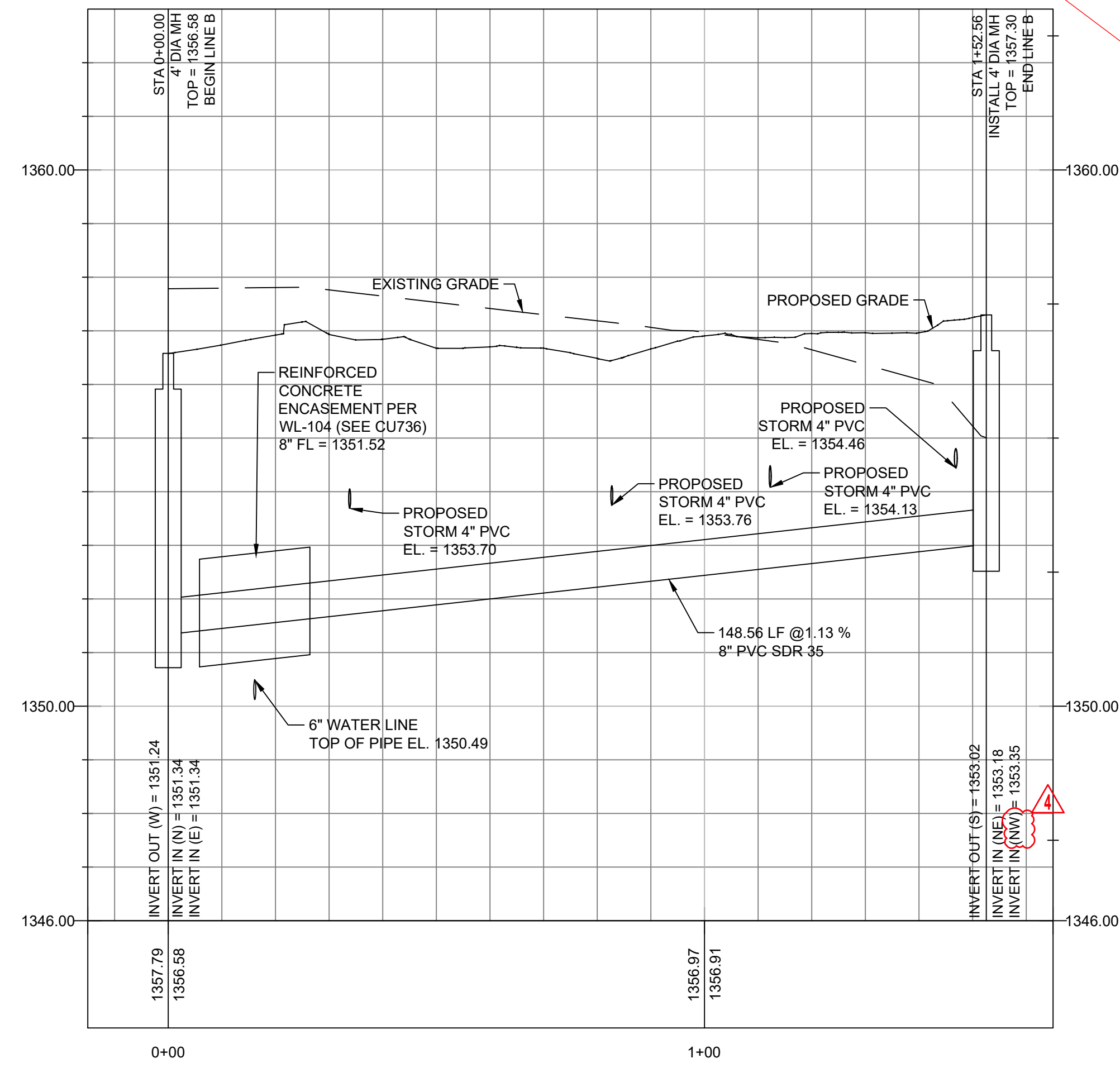
Δ	DESCRIPTION	DATE
4	CITY OF WICHITA	3/9/2021
3	CITY OF WICHITA	2/17/2021
2	CITY OF WICHITA	2/4/2021

PROJECT NO.:	15005.20002
DATE:	10/28/2020
DRAWN BY:	DMH
CHKD BY:	LEG

© GLMV Architecture, Inc.  
All work herein is the property of GLMV Architecture, Inc. and is not to be copied or used in any way without the express written consent of GLMV Architecture, Inc.

PPS PLAN  
**CU721A**



NOTE: 8" pvc was repaired/replaced with new pipe was installed due to sag in pipe. Also, concrete encasement was not reinstalled per plan due to 40" of cover between sanitary sewer line B and Water Line 100 at this crossing.

**2 SANITARY LINE B PLAN & PROFILE**  
1" = 20'-0"  
SCALE: HORIZONTAL 1"=20'  
SCALE: VERTICAL 1" = 2"