

# LATERAL 320, FOUR MILE CREEK SEWER SANITARY SEWER EXTENSION

LOTS 21-25, BLOCK 2; LOTS 29-48, BLOCK 3; LOTS 4 and 12-23 BLOCK 7  
BRENTWOOD SOUTH ADDITION

PROJECT NO. 468-83354  
OCA # 743981

## BENCH MARKS

BENCH MARK #1: USGS BRASS PLUG 28' S. & 530' W.  
OF CENTERLINE INTERSECTION OF CAPRI & PANNEE  
ELEV.=1386.25 NGVD

BENCH MARK #2: CITY OF WICHITA STD. DISC  
20.8' W & 54.5' S. OF CENTERLINE INTERSECTION  
DALTON & PANNEE  
ELEV.=1379.60

## GENERAL NOTES

Contractor will be required to provide a minimum advance notice of twenty-four (24) hours to utility companies prior to starting any excavation as follows:

Kansas One-Call 687-2470

The Contractor must notify the following in case of an emergency:

|                                    |                |
|------------------------------------|----------------|
| Cox Communications                 | 262-0661       |
| Kansas Gas Service                 | 383-8600       |
| Westar                             | 383-8600       |
| Aquila                             | 1-800-303-0357 |
| SBC                                | 1-800-286-8313 |
| City of Wichita Water Department   | 262-6000       |
| City of Wichita Sewer Maintenance  | 262-6000       |
| Williams Pipeline - Terry Blanding | 529-6622       |

Underground utility service lines and overhead utility pole lines are to be adjusted as necessary by others prior to construction unless the plans specifically call for their adjustment by the Contractor or unless the plans specifically identify a utility to be adjusted by its owner during construction. Existing utilities and their location, as shown on the plans, represent the best information obtainable for design. Location information has been obtained from the various utility companies and is either from company record drawings or company-provided field locations. The Contractor will be required to work around existing utilities within the right-of-way which do not conflict with proposed construction.

A saw cut of at least one-half the depth of existing surface courses or one-fourth the depth of existing total pavement thickness shall be provided at locations where proposed construction abuts an existing surface course or pavement for which partial removal of that surface or pavement is required, except when such saw cuts are within three (3) feet of an existing joint the limits of removal shall be extended to the existing joint. Such saw cuts will not be paid for directly and this cost shall be considered as subsidiary to the removal of the surface or pavement.

Rubble from the removal of miscellaneous structures and excess excavation which is to be wasted shall be disposed of on sites to be provided by the Contractor. These sites shall be approved by the Engineer as to suitability, appearance and site location. Locations that, in the opinion of the Engineer, will leave an unsightly appearance will not be approved.

All disposal sites must be approved by the Kansas Department of Health and Environment. Material either stockpiled or disposed of in a flood plain would require a Kansas State Board of Agriculture permit. Any material dumped in waters of the United States or wetlands is subject to U.S. Corps permitting regulations. Any material buried or stockpiled beyond approved of Engineers construction limits would require additional archeological investigations unless buried in a previously approved borrow location.

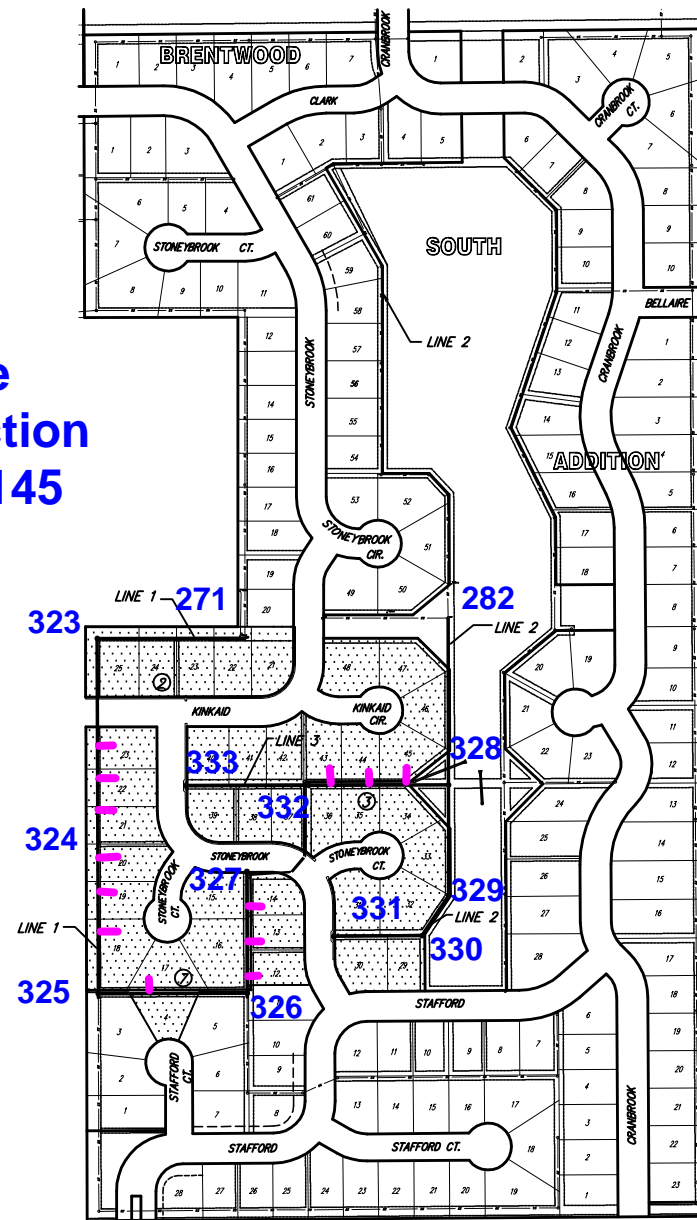
The Engineer shall take field ties to all quarter section corners. The Contractor shall set a City survey monument in the required location where such quarter section corners fall within the limits of pavement construction. Survey monuments will be furnished by the City. The Engineer will accurately locate and install the iron at the quarter section corner. This work will not be paid for directly, but shall be considered subsidiary to the other pay items of work in the contract.

The Contractor shall notify pipeline companies at least 24 hours in advance of any work being performed across and/or adjacent to pipelines.

The Contractor shall give all property owners and/or tenants of developed property directly abutting the construction of this project a minimum of ten (10) days advance notice prior to start of construction.

The Contractor shall seed, fertilize and mulch all disturbed areas upon completion of construction. Incidental to the bid item for "Site Clearing and Restoration".

Mile  
Section  
# 6145



Scale: 1" = 200'

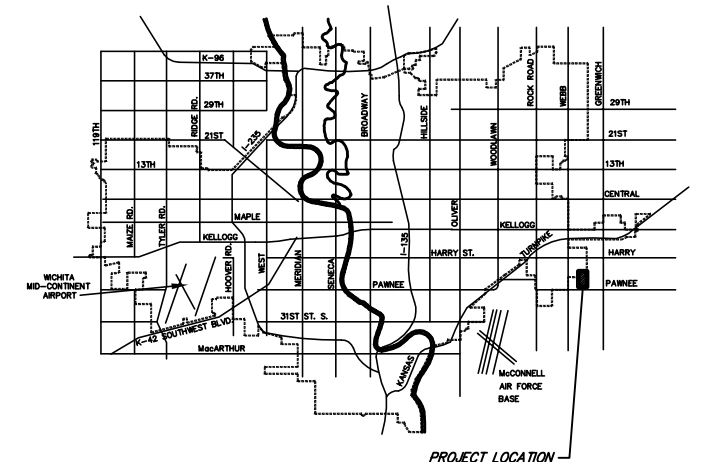
AS BUILT □  
11/07/03 □  
RDL □  
RISERS □



IMPROVEMENT DISTRICT

## INDEX OF SHEETS

1. TITLE SHEET
- 2-3. LINE 1 PLAN/PROFILE
4. LINE 2 PLAN/PROFILE
5. LINE 3 PLAN/PROFILE
6. EASEMENT GRADING PLAN
7. MANHOLE RING AND COVER DETAILS
8. TYPE "P" MANHOLE DETAIL
9. VERTICAL RISER DETAIL
- 10-12. EROSION CONTROL PLANS
13. FINAL PLAT



VICINITY MAP

CITY OF WICHITA, KANSAS  
NEIL D. CABLE, P.E. - CITY ENGINEER

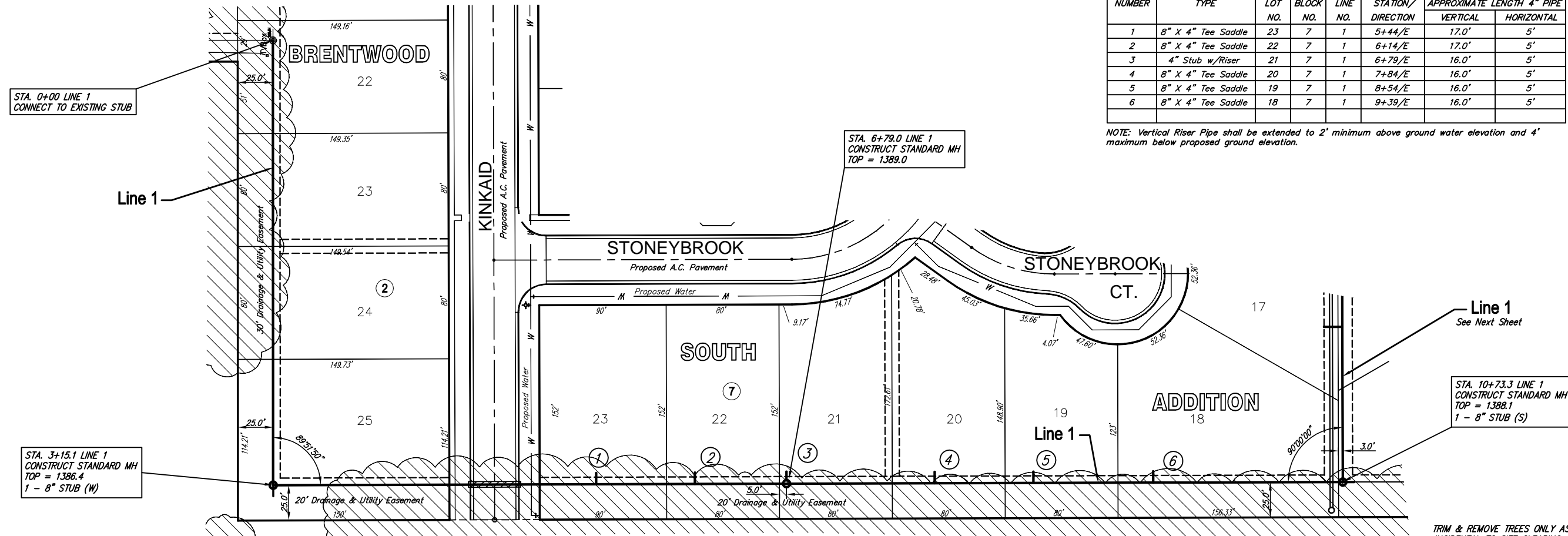
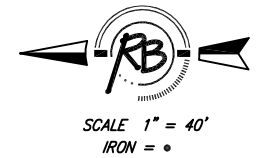


Ruggles & Bohm, P.A.  
Engineering, Surveying, Land Planning  
924 North Main (316) 264-8008  
Wichita, Kansas 67203 (316) 264-4621 fax  
www.rbkansas.com E-mail: info@rbkansas.com

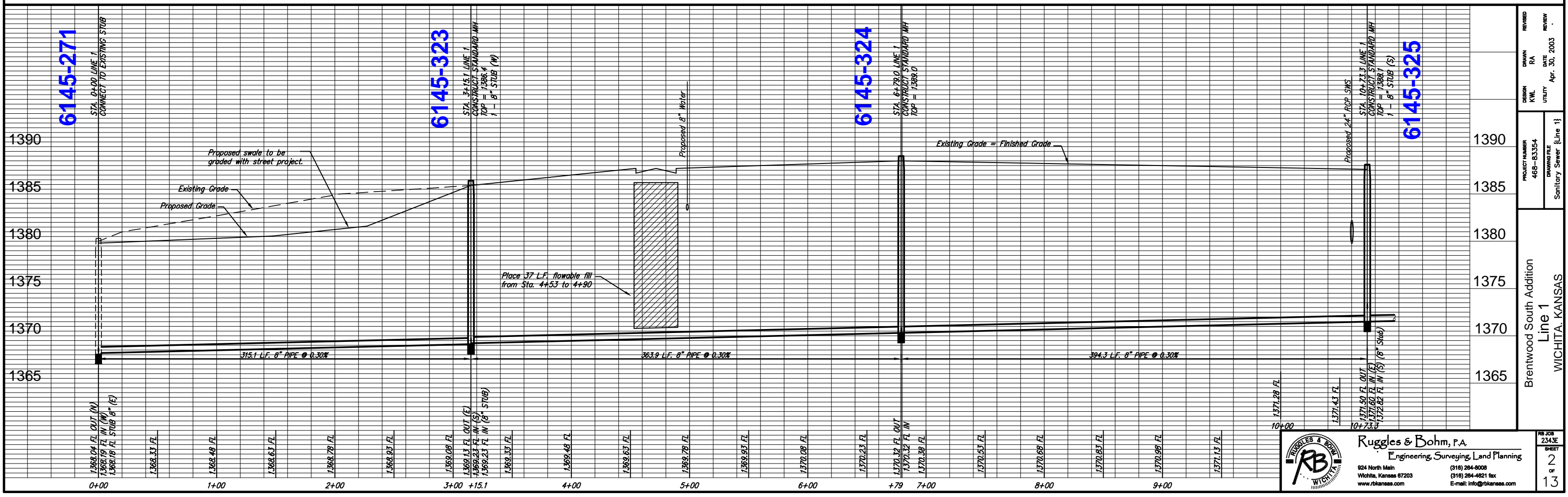
SEWER SERVICE TABLE


| NUMBER | TYPE               | LOCATION |           |          | FOR INFORMATION ONLY |                            |            |
|--------|--------------------|----------|-----------|----------|----------------------|----------------------------|------------|
|        |                    | LOT NO.  | BLOCK NO. | LINE NO. | STATION/DIRECTION    | APPROXIMATE LENGTH 4" PIPE |            |
|        |                    |          |           |          |                      | VERTICAL                   | HORIZONTAL |
| 1      | 8" X 4" Tee Saddle | 23       | 7         | 1        | 5+44/E               | 17.0'                      | 5'         |
| 2      | 8" X 4" Tee Saddle | 22       | 7         | 1        | 6+14/E               | 17.0'                      | 5'         |
| 3      | 4" Stub w/Riser    | 21       | 7         | 1        | 6+79/E               | 16.0'                      | 5'         |
| 4      | 8" X 4" Tee Saddle | 20       | 7         | 1        | 7+84/E               | 16.0'                      | 5'         |
| 5      | 8" X 4" Tee Saddle | 19       | 7         | 1        | 8+54/E               | 16.0'                      | 5'         |
| 6      | 8" X 4" Tee Saddle | 18       | 7         | 1        | 9+39/E               | 16.0'                      | 5'         |

NOTE: Vertical Riser Pipe shall be extended to 2' minimum above ground water elevation and 4' maximum below proposed ground elevation.



TRIM & REMOVE TREES ONLY AS NECESSARY FOR SEWER CONSTRUCTION. INCIDENTAL TO SITE CLEARING AND RESTORATION.





**Ruggles & Bohm, P.A.**  
Engineering, Surveying, Land Planning  
924 North Main  
Wichita, Kansas 67203  
www.rbkansas.com

PROJECT NUMBER  
468-65354

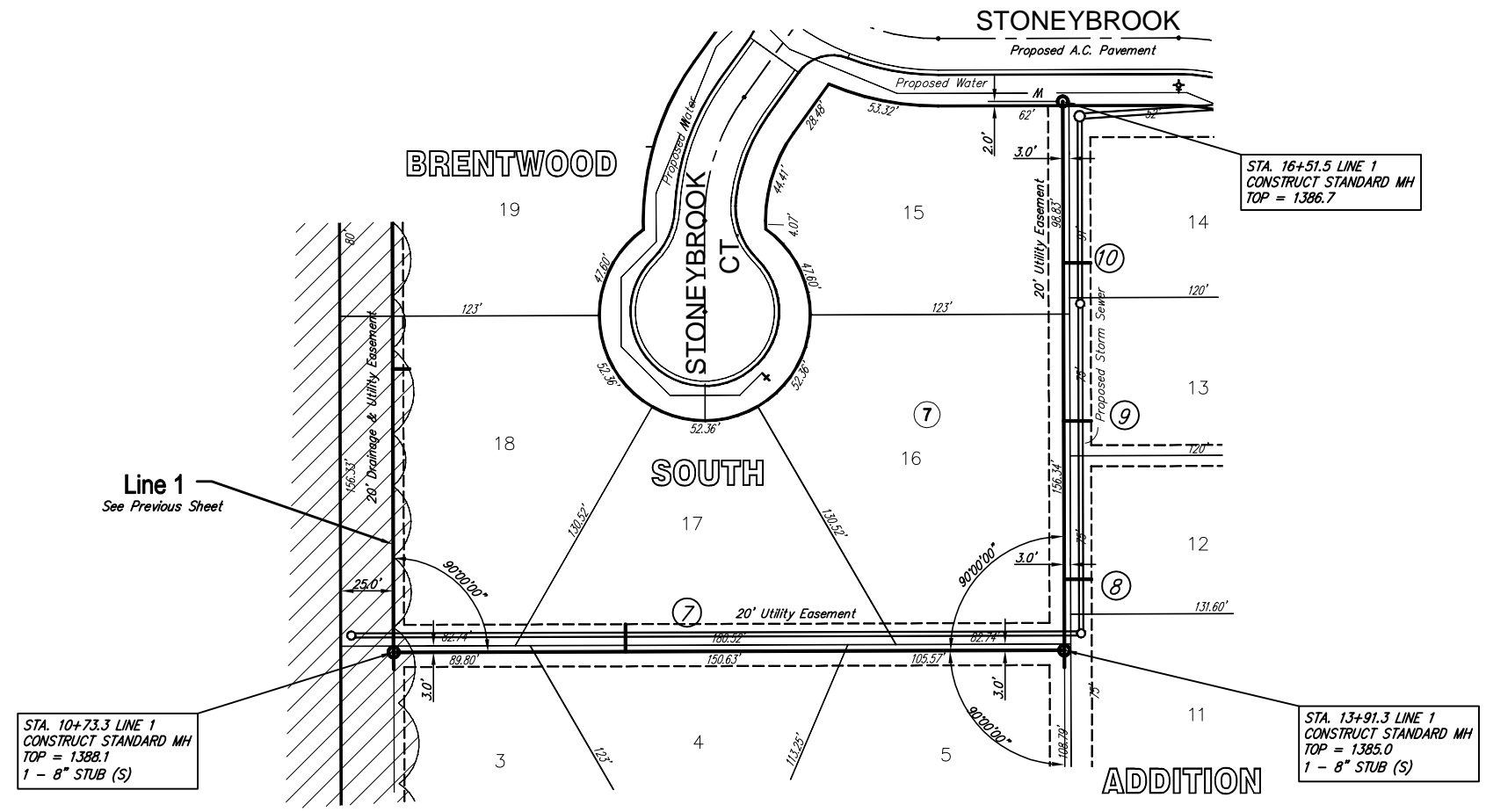
DESIGN  
KWL

DRAWING FILE  
Sanitary Sewer (Line 1)

REVISION  
DATE  
Apr. 30, 2003

RB JOB  
2343E

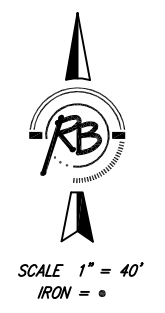
SHEET  
2  
OF  
13



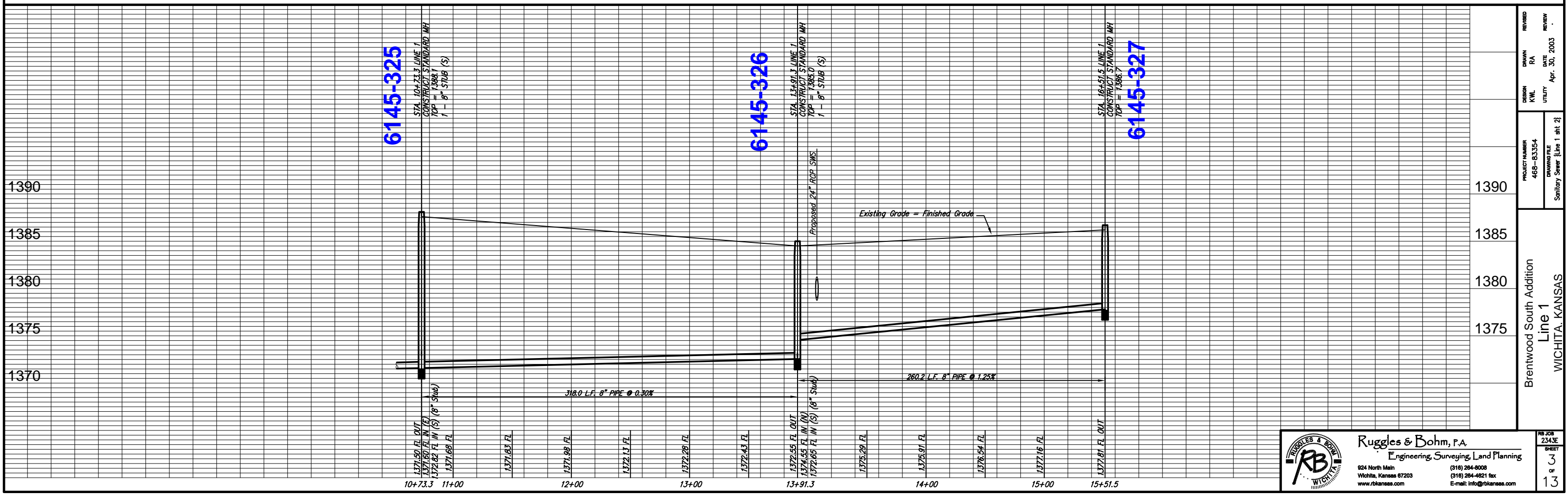
SEWER SERVICE TABLE

| NUMBER | TYPE               | LOCATION |           |          | FOR INFORMATION ONLY |   |
|--------|--------------------|----------|-----------|----------|----------------------|---|
|        |                    | LOT NO.  | BLOCK NO. | LINE NO. | STATION/DIRECTION    | APPROXIMATE LENGTH 4" PIPE<br>VERTICAL HORIZONTAL |
| 7      | 8" X 4" Tee Saddle | 17       | 7         | 1        | 11+83/N              | 13.5' 15'   |
| 8      | 8" X 4" Tee Saddle | 12       | 7         | 1        | 14+25/E              | 13.5' 15'   |
| 9      | 8" X 4" Tee Saddle | 13       | 7         | 1        | 15+00/E              | 13.5' 15'   |
| 10     | 8" X 4" Tee Saddle | 14       | 7         | 1        | 15+75/E              | 13.5' 15'   |

NOTE: Vertical Riser Pipe shall be extended to 2' minimum above ground water elevation and 4' maximum below proposed ground elevation.



TRIM & REMOVE TREES ONLY AS NECESSARY FOR SEWER CONSTRUCTION.  
INCIDENTAL TO SITE CLEARING AND RESTORATION.



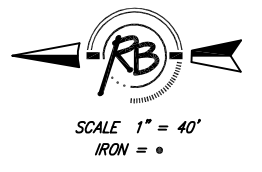
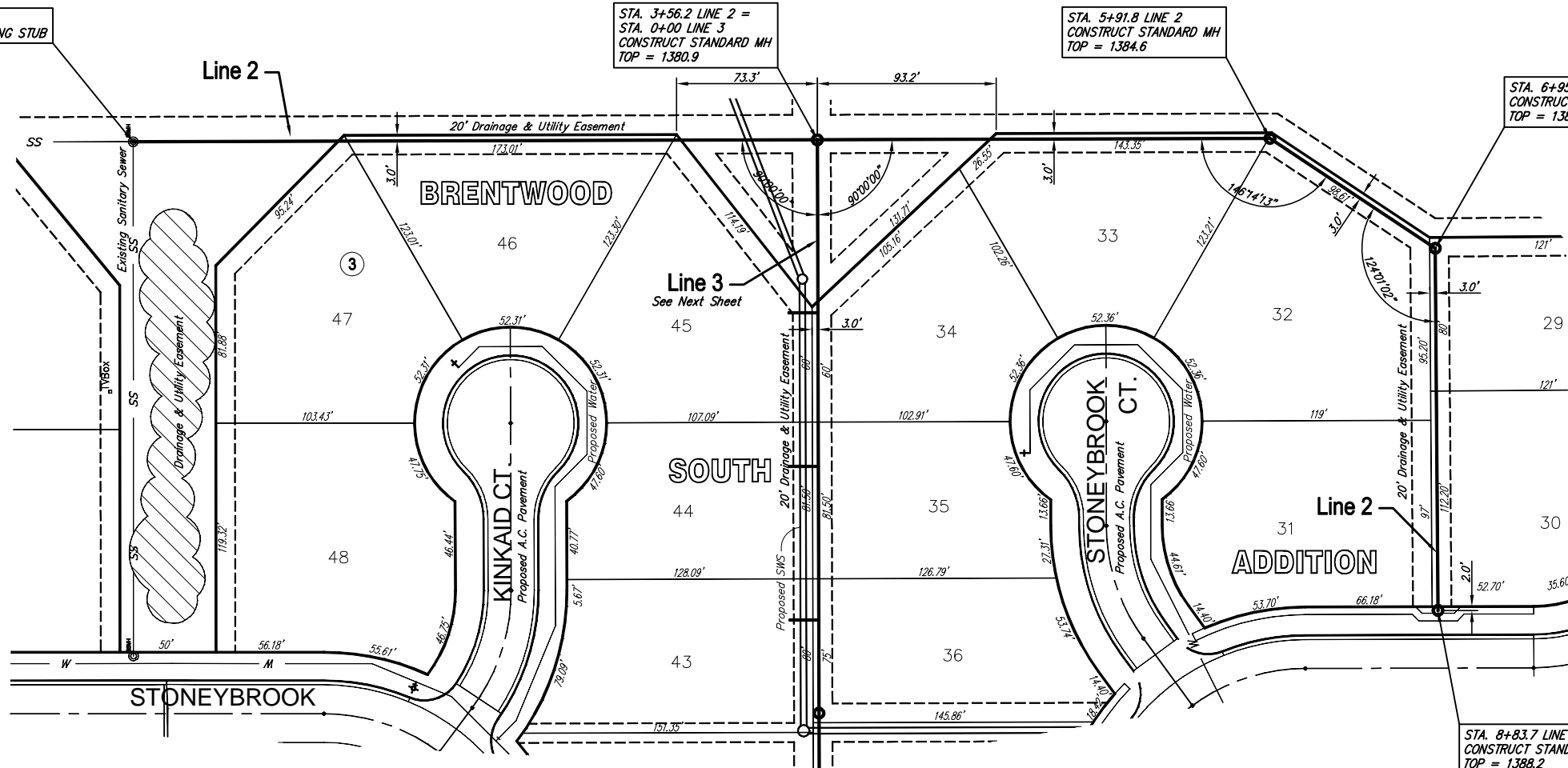
STA. 0+00 LINE 2  
CONNECT TO EXISTING STUB

STA. 3+56.2 LINE 2 =  
STA. 0+00 LINE 3  
CONSTRUCT STANDARD MH  
TOP = 1380.9

STA. 5+91.8 LINE 2  
CONSTRUCT STANDARD MH  
TOP = 1384.6

STA. 6+95.1 LINE 2  
CONSTRUCT STANDARD MH  
TOP = 1385.0

STA. 8+83.7 LINE 2  
CONSTRUCT STANDARD MH  
TOP = 1388.2



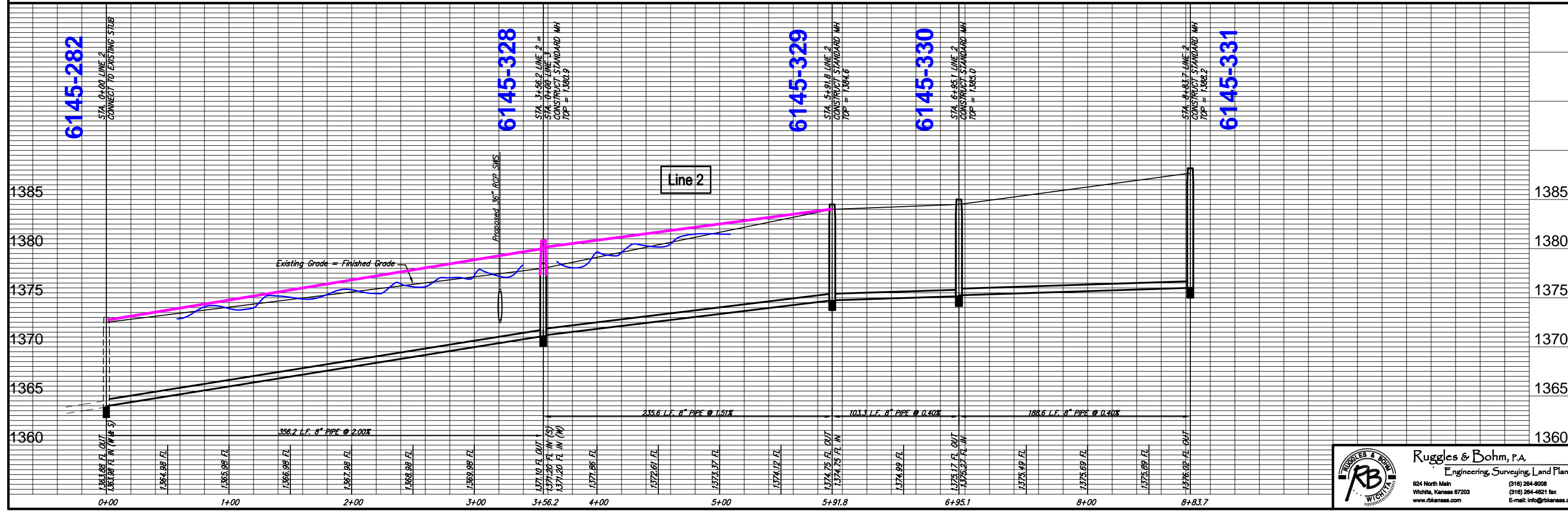
6145-282

6145-328

6145-329

6145-330

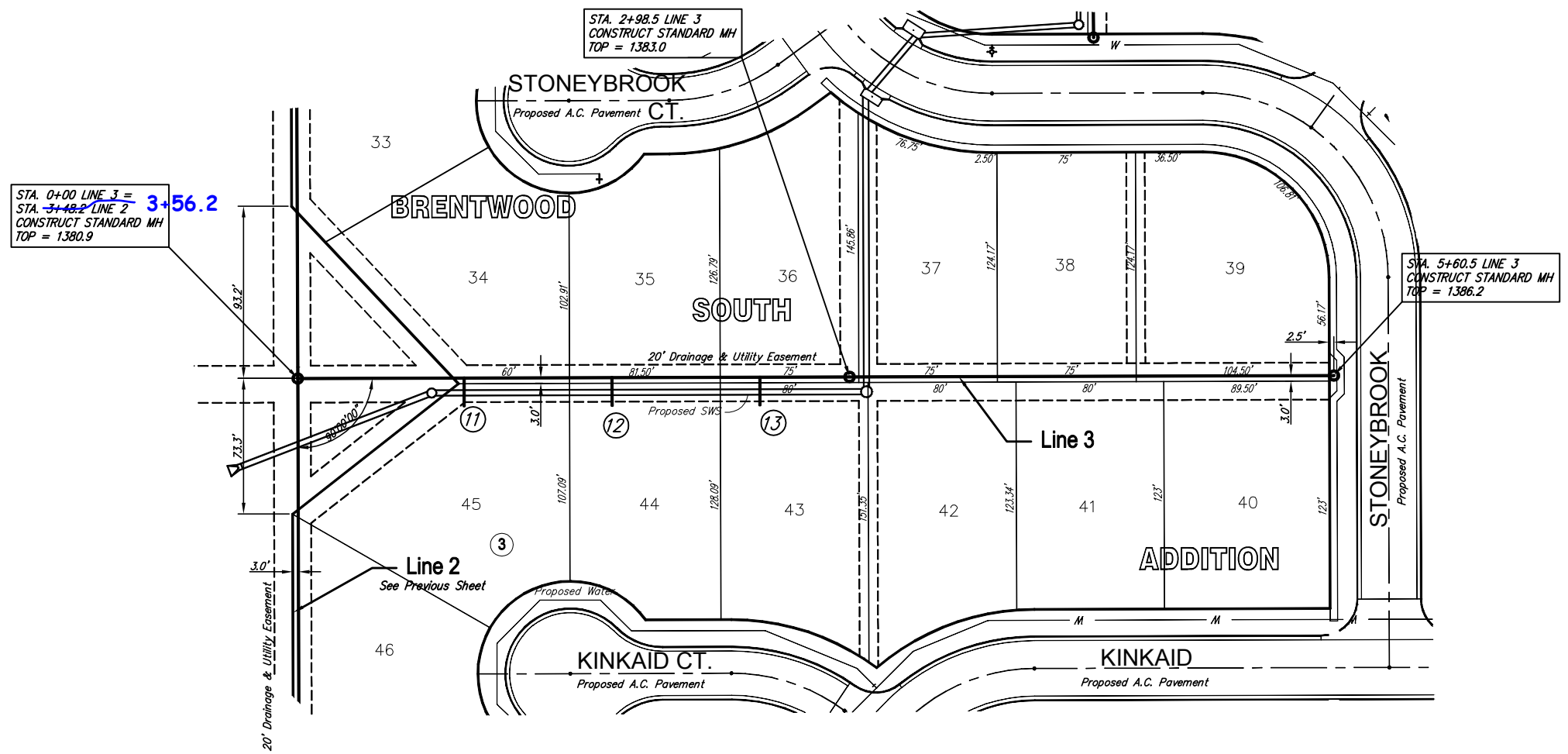
6145-331



|   |               |                       |
|---|---------------|-----------------------|
| PROJECT NUMBER<br>468-83354                           | DESIGN<br>KWL | DATE<br>Apr. 30, 2003 |
| DRAWING FILE<br>Sanitary Sewer \Line 2\               | REVIEW<br>RA  | REVIEW                |
| Brentwood South Addition<br>Line 2<br>WICHITA, KANSAS |               |                       |

**Ruggles & Bohm, P.A.**  
Engineering, Surveying, Land Planning  
824 North Main  
Wichita, Kansas 67203  
www.rbkansas.com  
(316) 284-8008  
(316) 284-4821 fax  
E-mail: info@rbkansas.com

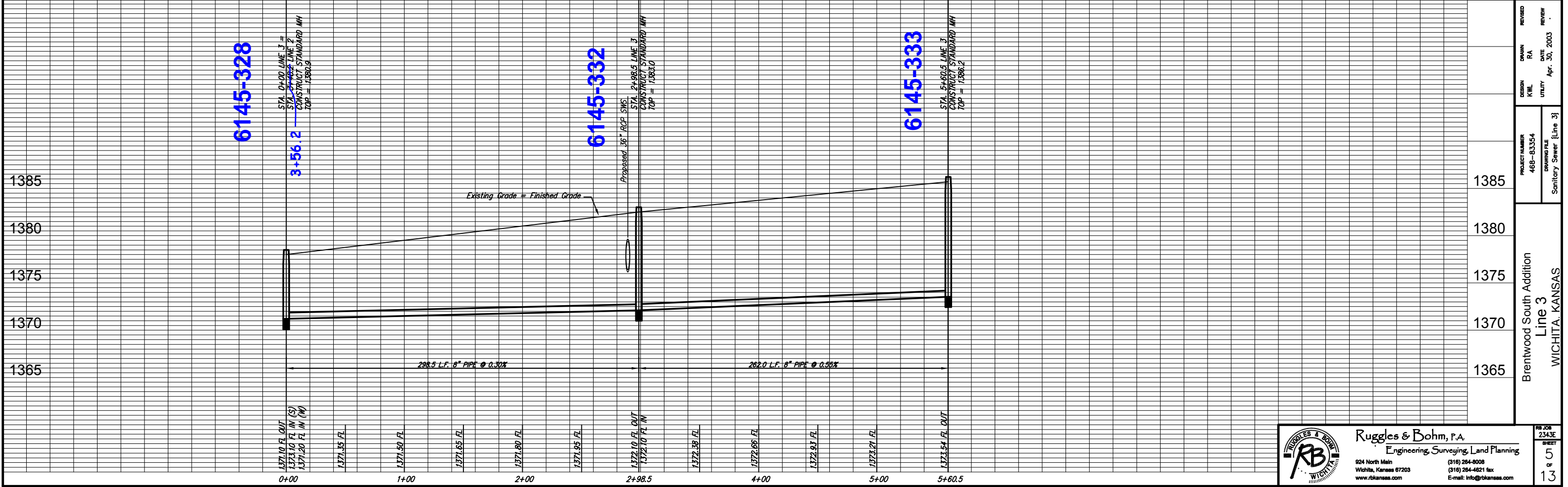
RB JOB  
2343E  
SHEET  
4  
of  
13



SEWER SERVICE TABLE

| NUMBER | TYPE               | LOCATION |           |                            | FOR INFORMATION ONLY       |     |
|--------|--------------------|----------|-----------|----------------------------|----------------------------|-----|
|        |                    | LOT NO.  | BLOCK NO. | LINE NO. STATION/DIRECTION | APPROXIMATE LENGTH 4" PIPE |     |
| 11     | 8" X 4" Tee Saddle | 45       | 3         | 3 0+90/N                   | 7.6'                       | 15' |
| 12     | 8" X 4" Tee Saddle | 44       | 3         | 3 1+70/N                   | 8.5'                       | 15' |
| 13     | 8" X 4" Tee Saddle | 43       | 3         | 3 2+50/N                   | 9.5'                       | 15' |
|        |                    |          |           |                            |                            |     |
|        |                    |          |           |                            |                            |     |

NOTE: Vertical Riser Pipe shall be extended to 2' minimum above ground water elevation and 4' maximum below proposed ground elevation.



PROJECT NUMBER  
 468-83354

DESIGN  
 KWL

DRAWING FILE  
 Sanitary Sewer Line 3

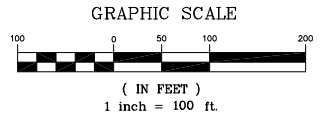
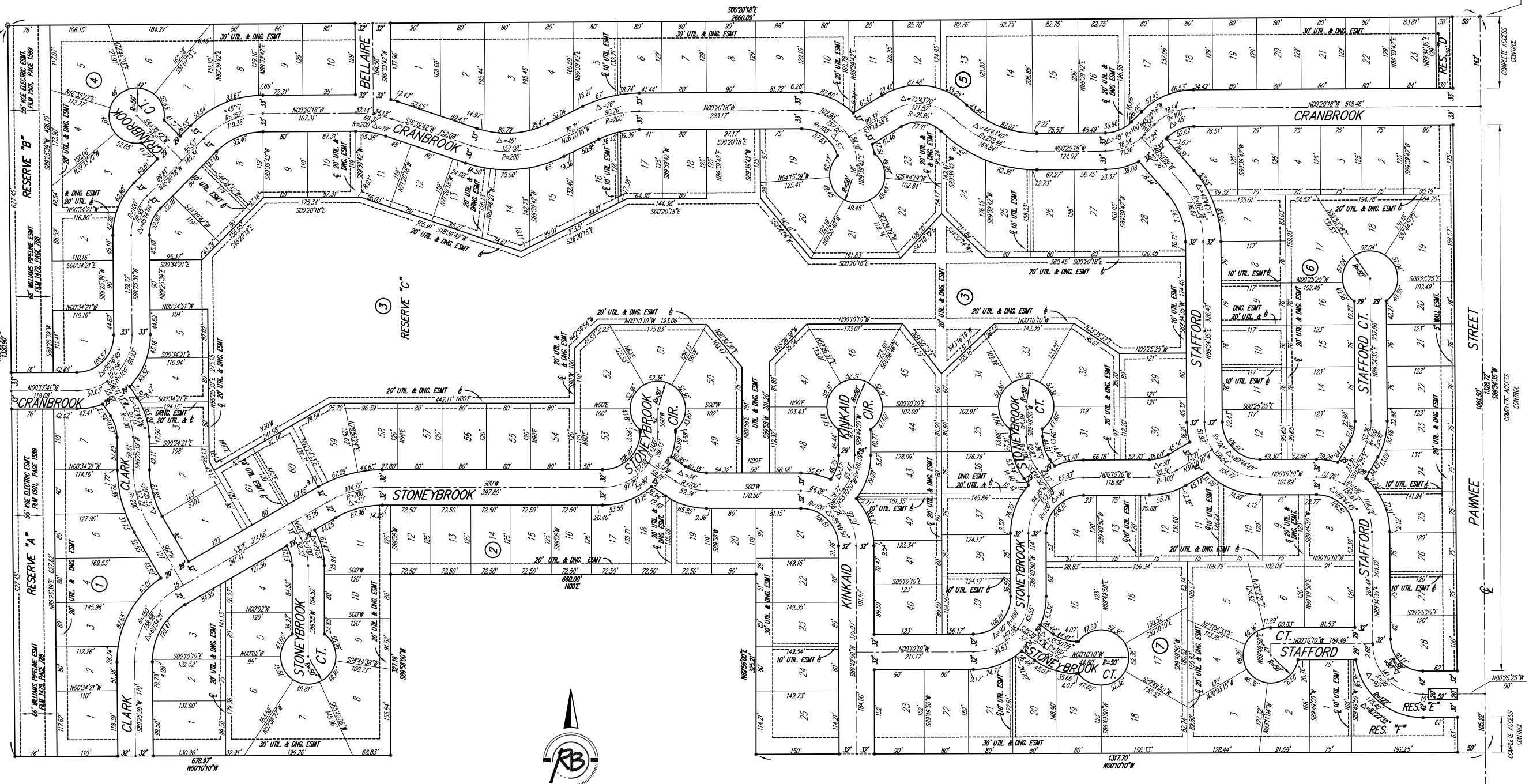
DATE  
 Apr. 30, 2003

REVIEW

BREWSTER SOUTH ADDITION  
 LINE 3  
 WICHITA, KANSAS

# BRENTWOOD SOUTH ADDITION

WICHITA, SEDGWICK COUNTY, KANSAS



| BLOCK | LOT NO.                     | ELEVATION (N.G.V.D.) |
|-------|-----------------------------|----------------------|
| 3     | Lots 1-20, 47<br>Lots 50-61 | 1369                 |

- △ = CITY OF WICHITA CONTROL THIMBLE (FOUND)
- = 1/2" REBAR W/CARBON CAP (FOUND)
- = 5/8" REBAR (FOUND)
- = 1/2" REBAR W/SPR. CAP (SET)

BENCH MARK #1: USGS BRASS PLUG 28" S. & 530' W. OF CENTERLINE INTERSECTION OF CAPRI & PANNEE. ELEV.=1386.25 MVD

BENCH MARK #2: CITY OF WICHITA STD. DISC 20.8" W & 54.5" S. OF CENTERLINE INTERSECTION DALTON & PANNEE. ELEV.=1379.60

Please contact Western Resources (or its successor) Electric Transmission Engineering Department (currently 785-575-8219) before conducting any proposed construction activities that could place people, equipment, or facilities within Western Resources' easement, shown on this plat, designated as Film 1501, Page 1589, dated December 29, 1994.

Brentwood South Addition  
**FINAL PLAT**  
WICHITA, KANSAS

**Ruggles & Bohm, P.A.**  
Engineering, Surveying, Land Planning

924 North Main  
Wichita, Kansas 67203  
www.rbkansas.com

(316) 264-8006  
(316) 264-4621 fax  
E-mail: Info@rbkansas.com

|                                       |                             |                   |                      |             |
|---------------------------------------|-----------------------------|-------------------|----------------------|-------------|
| DRAWING FILE<br>Sanitary Sewer {Plat} | PROJECT NUMBER<br>468-83354 | DESIGN<br>KWL     | DRAWN<br>RA          | SHEET<br>13 |
|                                       |                             | REVIEW<br>UTILITY | DATE<br>Mar. 6, 2003 | OF<br>13    |