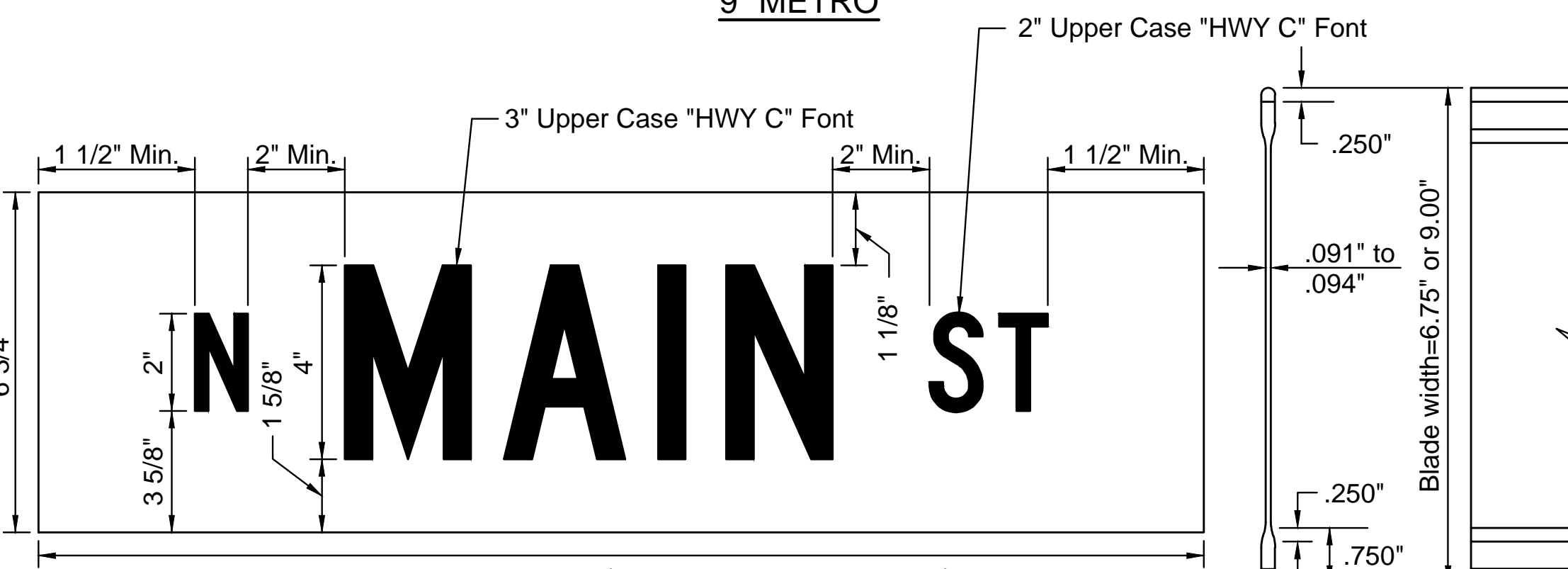


Blade Length as Required (6" increments, 18" minimum)
Text to be centered within Blade

STREET NAME SIGN DETAIL B
9" METRO



Blade Length as Required (6" increments, 18" minimum)
Text to be centered within Blade

STREET NAME SIGN DETAIL A
6 3/4" STANDARD

STREET NAME	STREET NAME SIGNS	
	NO. BLADES REQ'D	
	6 3/4" STD	9" METRO
WEST ST		3
47TH ST		1
ANGEL ST		1
44TH ST		1

STATION	OFFSET	SIGN	QUANTITY
123+95	16' LT	R2-1	1
126+19	23' RT	R1-1	1
127+11	23' LT	R1-1	1
127+11	23' RT	D3-1	1
129+50	23' RT	R2-1	1
148+85	23' RT	W11-2	1
		W16-9P	
153+00	23' LT	W11-2	1
		W16-9P	
175+32	21' RT	W3-3	1
225+81	23' LT	W14-2	1
226+09	23' RT	R1-1	1
227+07	23' LT	R1-1	1
229+01	19' RT	R2-1	1
300+53	34' RT	D3-1	1
300+56	29' LT	R1-1	1
400+56	35' RT	D3-1	1
400+57	36' LT	R1-1	1

GENERAL NOTES - SIGNING

NOTE: REFERENCES BELOW TO "STANDARD SPECIFICATIONS" DENOTE "STANDARD SPECIFICATION FOR STATE ROAD AND BRIDGE CONSTRUCTION, EDITION 2015" BY THE KANSAS DEPARTMENT OF TRANSPORTATION.

- FABRICATION AND INSTALLATION OF ALL SIGNS SHALL CONFORM TO THE LATEST EDITION OF THE MANUAL ON UNIFORM TRAFFIC CONTROL DEVICES (MUTCD) AND THE STANDARD HIGHWAY SIGNS (2004 EDITION).
- POST ANCHORS - POSTS SHALL BE ANCHORED WITH A YIELDING BASE POST SUPPORT AS DETAILED.
- POSTS FOR TRAFFIC CONTROL SIGNS - POSTS SHALL CONFORM TO THE REQUIREMENTS OF SUBSECTION 1620 OF THE STANDARD SPECIFICATIONS EXCEPT THAT ALL POSTS SHALL WEIGH 3 LBS./FT. MINIMUM.
- POSTS FOR STREET NAME SIGNS - POSTS SHALL BE 9 FEET LONG, CONSTRUCTED FROM #14 GALVANIZED STEEL PIPE AND SHALL BE 1 3/4" SQUARE WEIGHING A MINIMUM OF 3 LBS./FT. POSTS SHALL BE POSITIONED SO THAT THE BOTTOM BLADE IS 7 FEET ABOVE GRADE.
- POSTS FOR END OF ROADWAY SIGNS - POSTS ARE TO BE 8' LONG AND INSTALLED A MINIMUM OF 4' FROM ROADWAY TO BOTTOM OF SIGN.
- SIGN BLANKS FOR TRAFFIC CONTROL SIGNS - SIGN BLANKS SHALL BE FABRICATED FROM 0.080" ALUMINUM ALLOY 6063-T6 CONFORMING TO THE REQUIREMENTS OF SUBSECTION 1626 OF THE STANDARD SPECIFICATIONS.
- SIGN BLADES FOR STREET NAME SIGNS - EXTRUDED ALUMINUM BLADES SHALL BE ALUMINUM ALLOY CONFORMING TO 6063-T6 OR 5052-H38 (ASTM SPECIFICATION B221, LATEST ISSUE). BLADES SHALL HAVE AN ALODINE OR PHOSPHATE ETCHED FINISH. FIBERGLASS SIGN BLANKS MAY BE USED IN LIEU OF EXTRUDED ALUMINUM, PROVIDED THAT THE FIBERGLASS BLANKS MEET THE SIZE AND SHAPE REQUIREMENTS SHOWN ON THIS SHEET. BLADES SHALL HAVE SQUARE CORNERS AND NO HOLES.

MINIMUM BLADE LENGTH SHALL BE 18", MAXIMUM BLADE LENGTH SHALL BE 48", WITH LENGTH VARIES IN INCREMENTS OF 6".

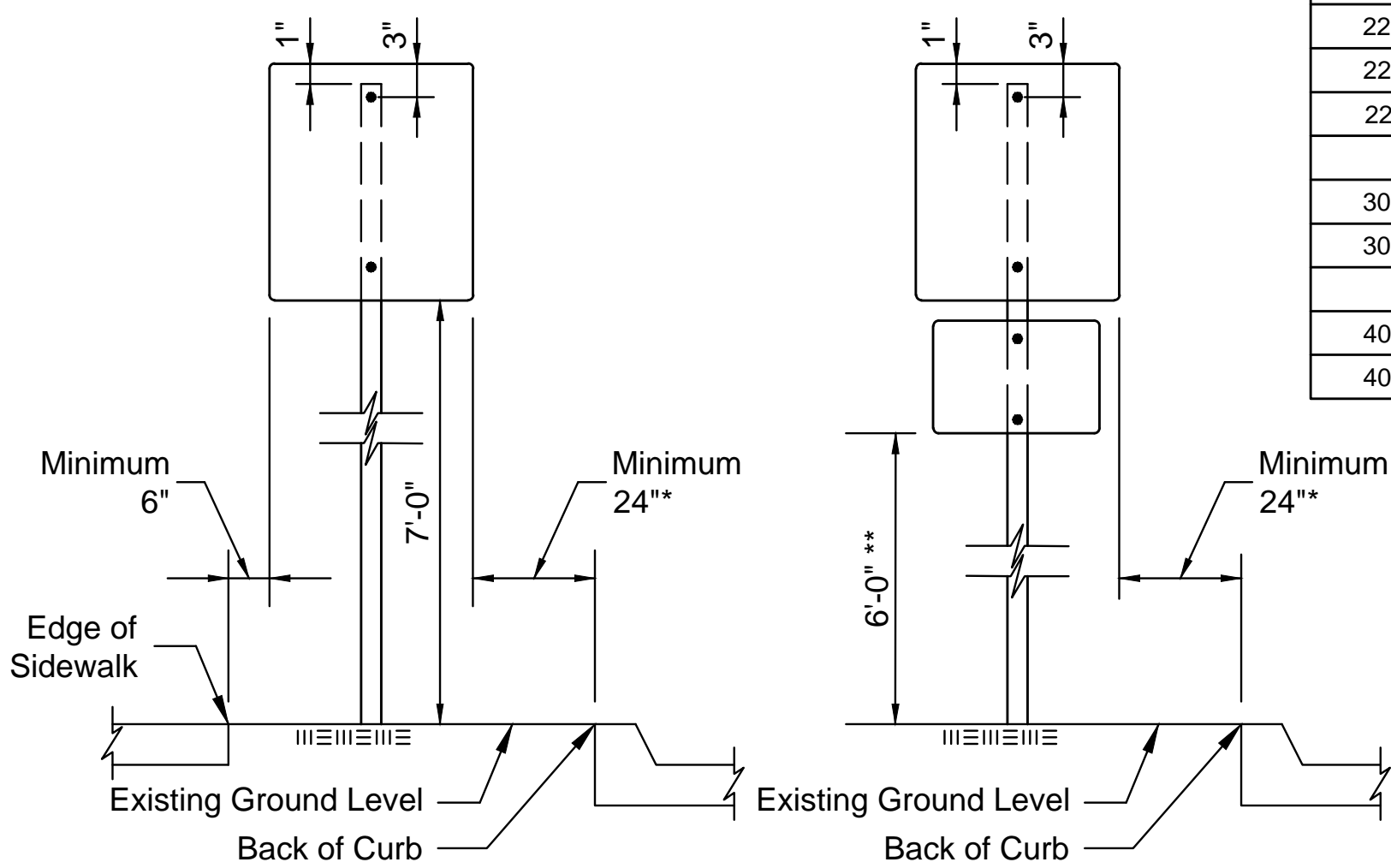
BLADES BEARING THE STREET NAMES SHALL BE FIRMLY ATTACHED TO THE MOUNTING BRACKETS USING ALLEN-TYPE CONICAL SET SCREWS. THE BLADES SHALL BE ORIENTED PARALLEL TO THE STREET.

- MOUNTING BRACKETS FOR STREET NAME SIGN - DIE-CAST ALUMINUM BRACKETS SHALL BE ALUMINUM ALLOY 360 HAVING A TENSILE STRENGTH OF 44,000 PSI. THE BRACKETS SHALL BE SMOOTHLY FINISHED FREE OF PITS, BURRS, AND FLAWS. EACH BRACKET SHALL BE TAPPED AND DRILLED FOR 5/16" ZINC-PLATED ALLEN-TYPE SET SCREWS HAVING SELF-LOCKING SAW-TOOTH ENDS.
- FASTENERS - ALL STEEL FASTENERS FOR TRAFFIC CONTROL SIGNS SHALL BE GALVANIZED AND SHALL CONFORM TO THE REQUIREMENTS OF SUBSECTION 1614 OF THE STANDARD SPECIFICATIONS.
- REFLECTIVE SHEETING - ALL SIGNS AND BARRICADES SHALL HAVE RETRO-REFLECTIVE FACES FACING TRAFFIC. REFLECTIVE SHEETING SHALL BE TYPE II - HIGH PERFORMANCE CLASS HA IN ACCORDANCE WITH SUBSECTION 2201 OF THE STANDARD SPECIFICATIONS.
- PROCESS INK - ALL PROCESS INK SHALL CONFORM TO THE REQUIREMENTS OF SUBSECTION 2202 OF THE STANDARD SPECIFICATIONS.
- DETAILS - STREET NAME SIGNS - THE REFLECTIVE SHEETING FOR THE 6 3/4" STANDARD SIZE STREET NAME SIGN IS TO BE HIGHWAY GREEN REVERSE SCREENED BACKGROUND WITH SILVER-WHITE #2 COPY WITH 4" UPPER CASE PRIMARY COPY AND SUFFIX COPY, SERIES "C". FACES TO TRIM TO A 6 1/4" WIDTH. (SEE DETAIL A.)

THE REFLECTIVE SHEETING FOR THE 9" METRO SIZE STREET NAME SIGN IS TO BE HIGHWAY GREEN REVERSE SCREENED BACKGROUND WITH SILVER-WHITE #2 COPY WITH 5" UPPER CASE PRIMARY COPY AND SUFFIX COPY, SERIES "C". FACES TO TRIM TO A 8 1/2" WIDTH. (SEE DETAIL B.)

SHOP DRAWINGS OF LAYOUTS FOR STREET NAME SIGNS SHALL BE SUBMITTED TO THE ENGINEER FOR APPROVAL PRIOR TO FABRICATION. THE FINISHED SIGNS AS SUPPLIED SHALL BE OF GOOD APPEARANCE, FREE FROM RAGGED EDGES, CRACKS, SCALES OR BLISTERS AND SHALL BE PACKED IN SUCH MANNER AS TO PREVENT DAMAGE OR DEFACEMENT DURING SHIPMENT OR STORAGE.

- TRAFFIC CONTROL AND STREET NAME SIGNS - TRAFFIC CONTROL AND STREET NAME SIGNS SHALL BE MEASURED AND PAID FOR AT THE LUMP SUM PRICE FOR SIGNING. THE PAYMENT AS SET FORTH ABOVE SHALL BE CONSIDERED FULL COMPENSATION FOR ALL EXCAVATION, BACKFILLING, POSTS, ANCHORS, FASTENERS, MATERIALS, LABOR, TOOLS AND INCIDENTALS NECESSARY TO COMPLETE THIS WORK.



TYPICAL MOUNTING FOR PRIMARY SIGNS

TYPICAL MOUNTING FOR PRIMARY & SECONDARY SIGNS

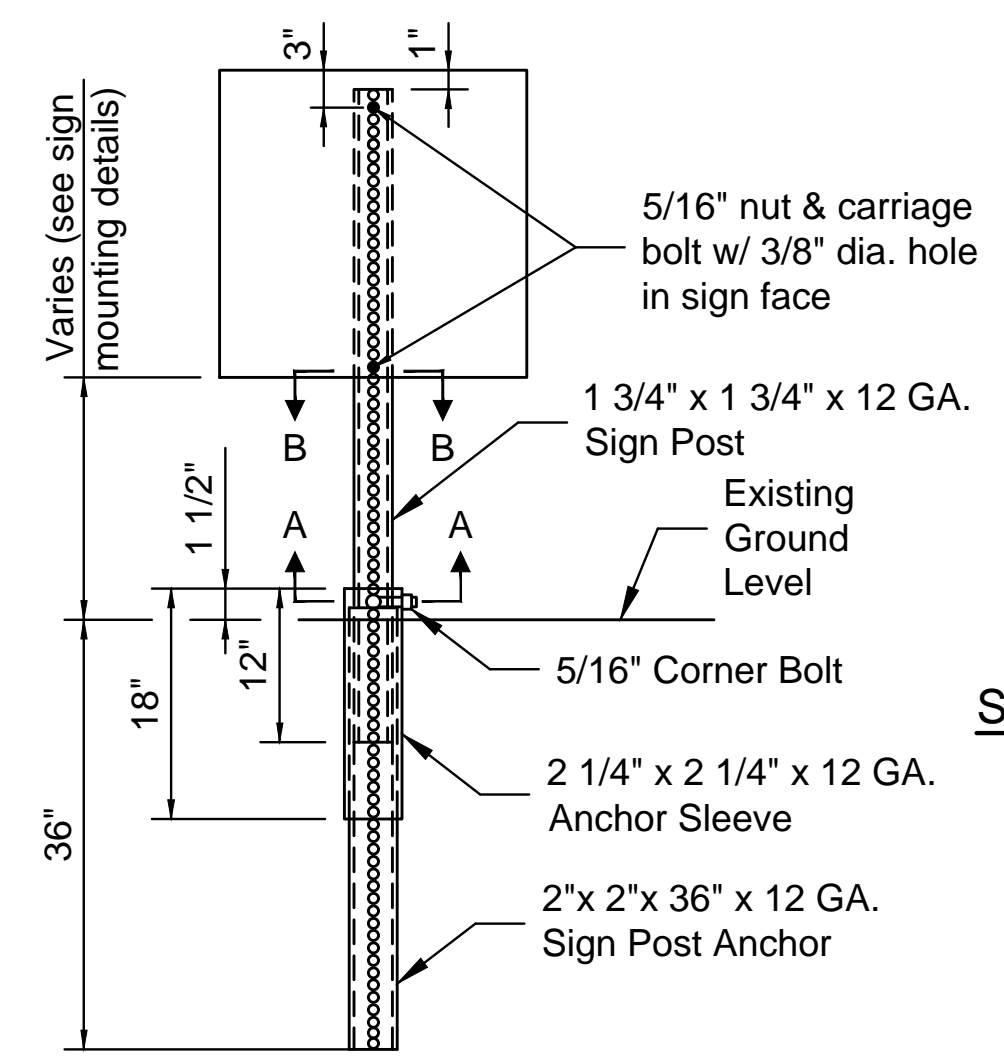
BREAK-AWAY SIGN POST INSTALLATION SEQUENCE

- SIGN POST ANCHOR DRIVEN PARTIALLY INTO SUBGRADE USING A DRIVE CAP WITH SLEDGE OR POWER EQUIPMENT.
- ANCHOR SLEEVE SLIPPED OVER ANCHOR AND DRIVEN INTO SUBGRADE TOGETHER WITH THE SIGN POST ANCHOR.
- INSERT SIGN POST INTO THE POST ANCHOR AND BOLT IN PLACE.

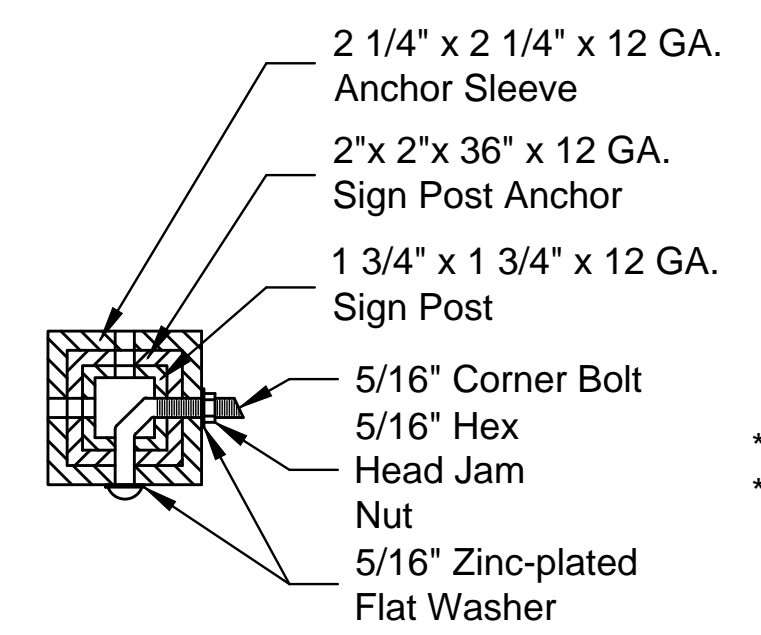
NOTE: THE FIRST HOLE ABOVE THE FINISHED GRADE LEVEL IN ALL THREE UNITS MUST BE IN LINE FOR INSERTION OF THE CORNER BOLT.

SIGNING GENERAL NOTES

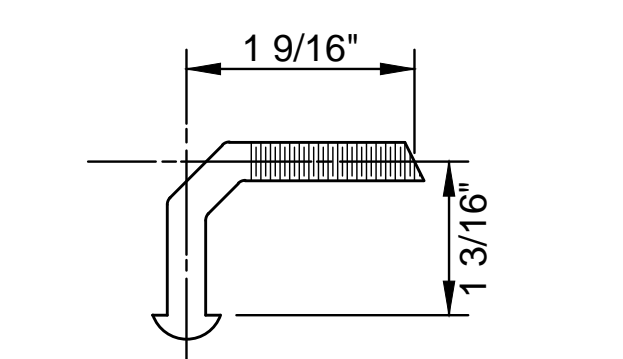
- HOLES IN THE SIGNS FOR ATTACHMENT TO THE SIGN POST SHALL BE OFFSET A MINIMUM OF 2" FROM THE EDGE OF THE SIGN.
- HOLES IN THE SIGNS SHALL BE LOCATED SUCH THAT THE SIGN IS LEVEL.
- SIGN MATERIAL THICKNESS SHALL BE 0.125" THICK ALUMINUM FOR SIGNS LARGER THAN 30" X 30". SIGNS 30" X 30" AND SMALLER SHALL BE 0.080" THICK.
- THE MAXIMUM SIGN AREA FOR ONE POST IS 9.0 SQ. FT. A SIGN OR COMBINATION OF SIGNS WITH GREATER THAN 9.0 SQ. FT. WILL REQUIRE TWO POSTS. SIGNS WITH A WIDTH GREATER THAN 36" WILL REQUIRE TWO POSTS.
- SIGN POSTS MUST MEET A CERTIFIED MINIMUM YIELD STRENGTH OF 60,000 PSI.



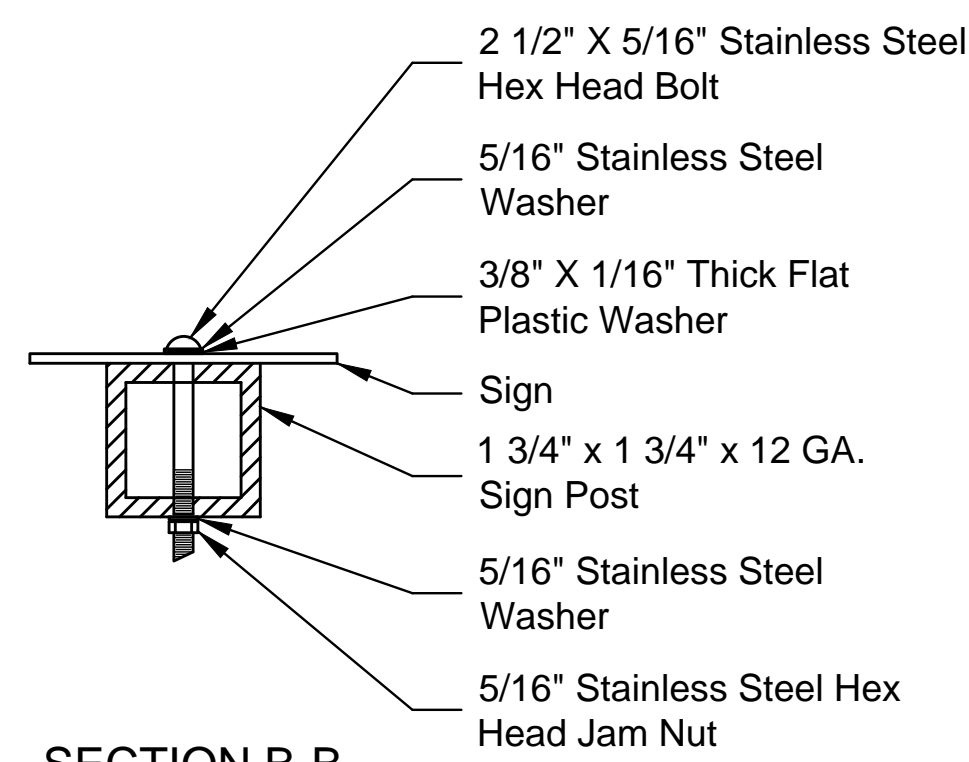
BREAK-AWAY SIGN POST DETAIL



SECTION A-A

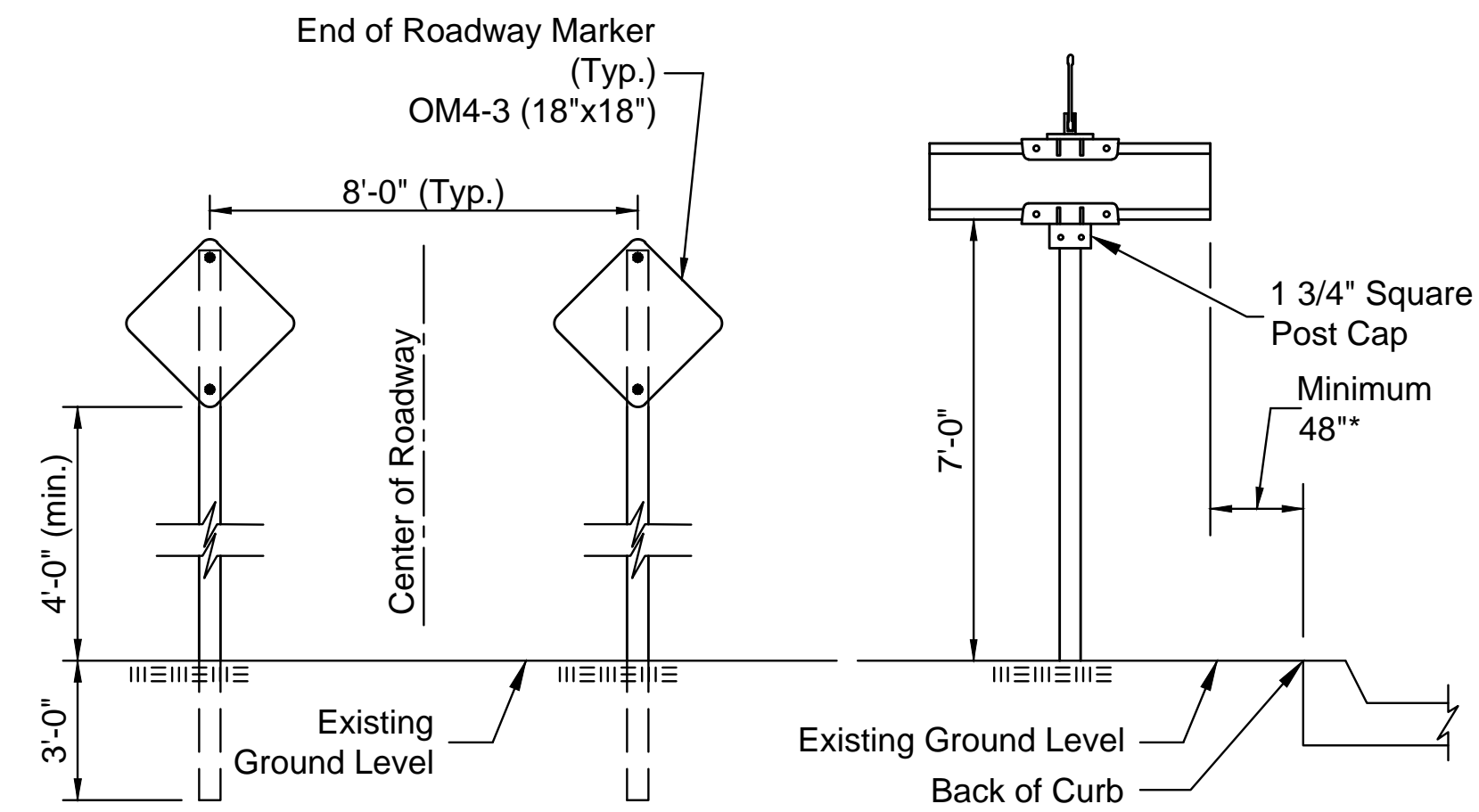


5/16" CORNER BOLT DETAIL



SECTION B-B

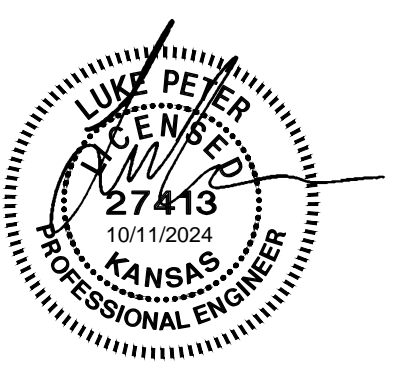
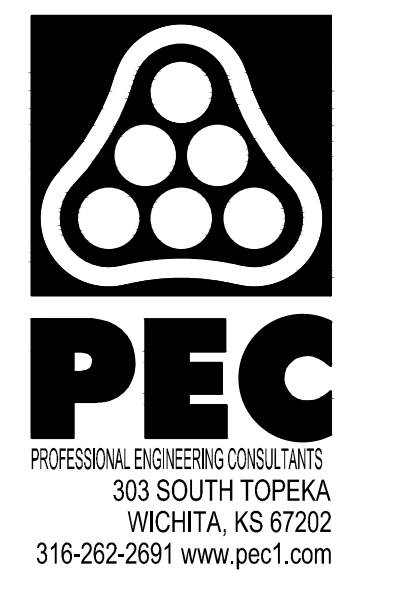
* OR AS DIRECTED BY THE ENGINEER.
** THE HEIGHT TO THE BOTTOM OF A SECONDARY SIGN MOUNTED BELOW ANOTHER SIGN WHEN IT IS LOCATED IN A PEDESTRIAN WALKWAY, OR EXTENDS MORE THAN 4" INTO A PEDESTRIAN WALKWAY, SHALL BE A MINIMUM OF 6'-8" (80") IN COMPLIANCE WITH THE AMERICANS WITH DISABILITY ACT (ADA).



TYPICAL END OF ROADWAY SIGN MOUNTING INSTALLATION

TYPICAL MOUNTING FOR STREET NAME SIGNS

SAVED 8/28/2024 8:10:23 AM BY LUKE PETER
 PLOTTED 10/10/2024 1:52:57 PM BY LUKE PETER
 U:\WICHITA-CV\1210254\001\PEC\DRAWINGS\66-210254-001-CT504 SIGNING DETAILS.DWG



WEST STREET IMPROVEMENTS
FROM MACARTHUR ROAD TO
47TH ST. SOUTH
CITY OF WICHITA

Issue:	
JOB NO.	210254-001
DATE	OCTOBER 2024
PM	TPA
DESIGNED BY	LGP
DRAWN BY	CP
CHECKED BY	KMS

SIGNING DETAILS