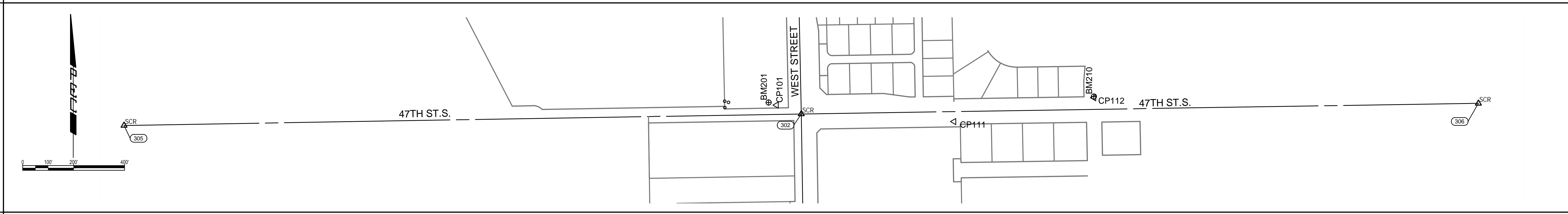
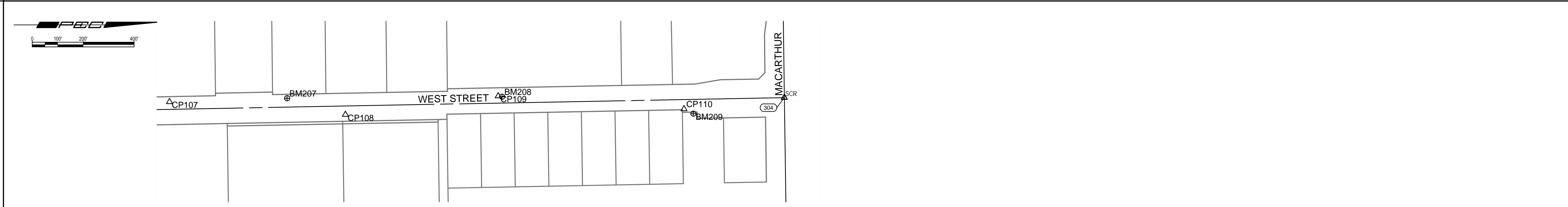
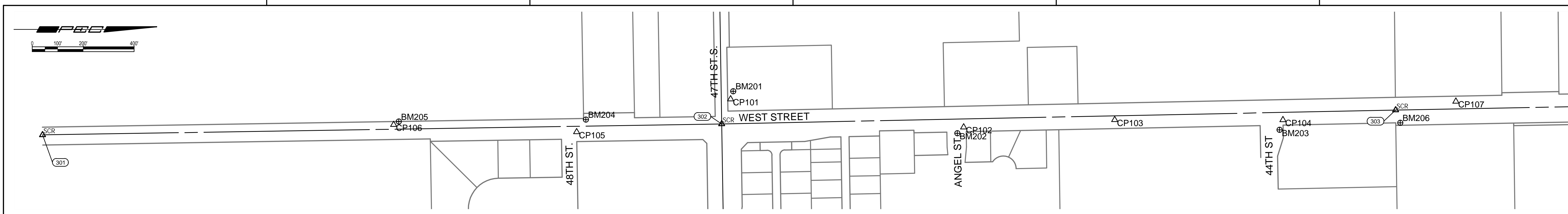


SAVED 10/11/2024 3:13:35 PM BY CARLOS PEREZ  
 PLOTTED 10/10/2024 1:29:07 PM BY LUKE PETER  
 U:\WICHITA-CIVIL\2024\1210254\001\PEC\DRAWINGS\02-210254-001-C002 HORIZONTAL AND VERTICAL CONTROL.DWG



HORIZONTAL DATUM/COORDINATE SYSTEM: NAD 83 (2011) KANSAS SOUTH ZONE  
 PROJECT COORDINATE SYSTEM: (GRID) ON DESCRIBED COORDINATE SYSTEM  
 VERTICAL DATUM: NAVD 88

**HORIZONTAL CONTROL:**

- CP-101  
 N: 1656974.1884 E: 1634084.8886  
 5/8" REBAR WITH BAUGHMAN CAP, W-NW OF WEST AND 47TH ST.  
 1. 38' S TO THE CENTERLINE OF 47TH ST. SOUTH  
 2. 84' E TO THE WEST EDGE OF WEST ST.  
 3. 74' SE TO A MAG NAIL IN THE SE FACE OF A POWER POLE
- CP-102  
 N: 1657888.9227 E: 1634194.783  
 1/2" REBAR WITH PEC CP CAP, NORTH SIDE OF ANGEL ST. AND WEST ST. INTERSECTION  
 1. 29.50' S TO THE CENTERLINE OF ANGEL ST.  
 2. 19.50' W TO THE EAST EDGE OF WEST ST.  
 3. 34.60' SE TO A CHISELED SQUARE ON THE NORTH CURB OF THE MEDIAN
- CP-103  
 N: 1658482.0402 E: 1634166.0401  
 1/2" REBAR WITH PEC CP CAP, AT THE TOP OF THE EAST DITCH BETWEEN ANGEL ST. AND 44TH ST.  
 1. 3.50' W TO THE EAST EDGE OF WEST ST.  
 2. 79.30' NNE TO A MAG NAIL IN THE WEST FACE OF A POWER POLE  
 3. 650' S TO THE CENTERLINE OF ANGEL ST.
- CP-104  
 N: 1659142.3068 E: 1634166.4988  
 1/2" REBAR WITH PEC CP CAP, NE OF THE INTERSECTION OF 44TH ST. AND WEST ST.  
 1. 41.20' ESE TO A CHISELED SQUARE ON THE NORTH CURB OF 44TH ST.  
 2. 47.50' S TO THE CENTERLINE OF 44TH ST.  
 3. 17.00' W TO THE EAST EDGE OF WEST ST.
- CP-105  
 N: 1656369.4869 E: 1634213.6356  
 1/2" REBAR WITH PEC CP CAP, NE OF THE INTERSECTION OF 48TH ST. AND WEST ST.  
 1. 11.00' W TO THE EAST EDGE OF WEST ST.  
 2. 29.00' S TO THE CENTERLINE OF 48TH ST.  
 3. 12.70' ENE TO THE SW CORNER OF THE ELECTRIC BOX NUMBER W1189-1
- CP-106  
 N: 1655650.8823 E: 1634185.1329  
 MAG NAIL ON THE SOUTH SIDE OF THE 1ST DRIVE SOUTH OF HOUSE # 4959  
 1. 10.00' N TO THE CENTERLINE OF THE DRIVEWAY  
 2. 16.50' E TO THE CENTERLINE OF WEST ST.  
 3. 41.10' NW TO THE CENTER OF TELEPHONE BOX # 4959

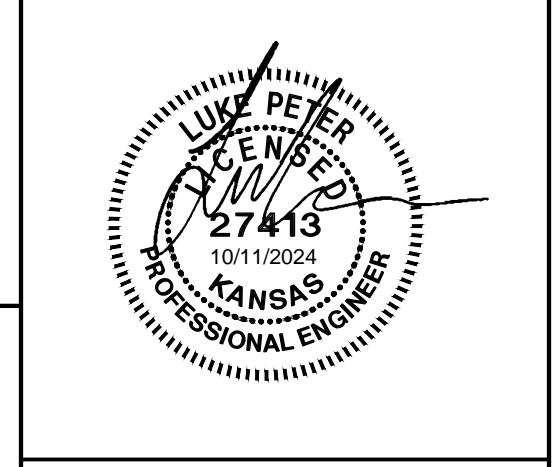
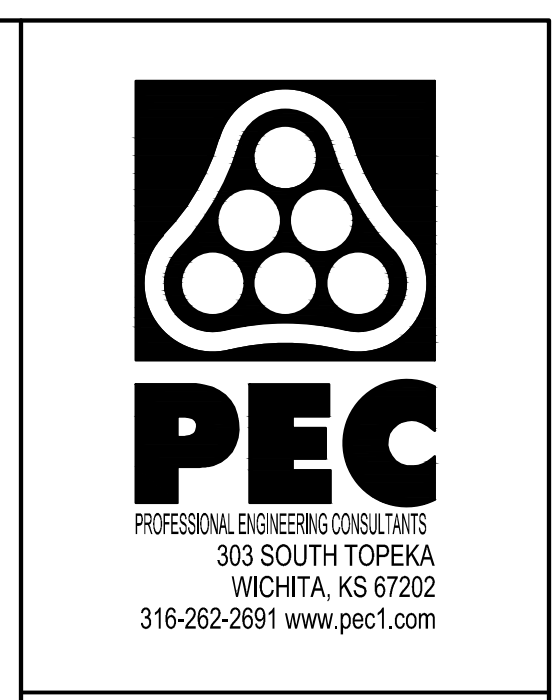
- CP-107  
 N: 1659821.4173 E: 1634093.8008  
 MAG NAIL IN THE NORTH SIDE OF THE SOUTH DRIVE TO BUSINESS #4343 WEST ST. SOUTH  
 1. 18.00' E TO THE WEST EDGE OF WEST ST.  
 2. 12.35' NNW TO THE NORTH END OF A 36" RCP  
 3. 12.25' NNE TO THE NORTH END OF A 36" RCP
- CP-108  
 N: 1660511.993 E: 1634144.4238  
 MAG NAIL IN THE NORTH SIDE OF THE FENCED OFF DRIVE TO D&D RENTALS, #4260 S WEST ST.  
 1. 22.50' W TO THE EAST EDGE OF WEST ST.  
 2. 31.30' NNE TO THE CENTER OF A SANITARY SEWER MANHOLE  
 3. 14.00' NNW TO THE NORTH END OF CMP
- CP-109  
 N: 1661111.451 E: 1634071.1258  
 1/2" REBAR WITH PEC CP CAP, AT THE NORTH SIDE OF DRIVE FOR BUSINESS ROBERTS, #4151 S. WEST ST.  
 1. 15.50' E TO THE WEST EDGE OF WEST ST.  
 2. 15.70' NNE TO THE TOP CENTER OF A FIRE HYDRANT  
 3. 22.00' S TO THE CENTERLINE OF A CONCRETE DRIVE
- CP-110  
 N: 1661840.9215 E: 1634121.9216  
 1/2" REBAR WITH PEC CP CAP, SOUTH SIDE OF GRAVEL DRIVE TO EVERGY SUBSTATION  
 1. 14.00' W TO THE EAST EDGE OF WEST ST.  
 2. 20.50' N TO THE CENTERLINE OF THE GRAVEL DRIVE  
 3. 13.90' S TO THE NORTH FACE OF POWER POLE
- CP-111  
 N: 1656909.5729 E: 1634781.9191  
 1/2" REBAR WITH PEC CP CAP, SOUTH SIDE OF 47TH ST. ACROSS FROM WEST END  
 OF CONCRETE WALL ON THE NORTH SIDE OF 47TH ST.  
 1. 16.70' ENE TO THE TOP CENTER OF A FIRE HYDRANT  
 2. 26.85' N TO THE SOUTH EDGE OF 47TH ST.  
 3. 21.85' SSE TO A TELEPHONE MARKER
- CP-112  
 N: 1657903.1267 E: 1635331.358  
 MAG NAIL IN THE NORTH SIDE OF 47TH ST. ON CENTERLINE OF KESSLER ST.  
 1. 4.50' N TO A CHISELED SQUARE ON THE SOUTH END OF THE MEDIAN  
 2. 20.00' ENE TO THE CENTER OF A SANITARY SEWER MANHOLE  
 3. 33.50' S TO THE NORTH EDGE OF 47TH ST.

**BENCH MARKS:**

- BMK > 201  
 N: 1656983.8636 E: 1634054.2028  
 X-CUT ON THE NORTH RIM OF A SANITARY SEWER MANHOLE LOCATED ±90' WNW OF THE INTERSECTION OF WEST ST. & 47TH ST. S  
 EL= 1283.89
- BMK > 202  
 N: 1657864.1874 E: 1634219.0303  
 CHISELED SQUARE ON THE NORTH PC AT THE WEST END OF THE MEDIAN AT ANGEL AND WEST ST  
 EL= 1284.82
- BMK > 203  
 N: 1659128.7315 E: 1634205.4055  
 CHISELED SQUARE ON THE NORTH CURB AT 44TH ST ±14' EAST OF THE EAST EDGE OF THE WHEEL CHAIR RAMP  
 EL= 1281.75
- BMK > 204  
 N: 1656405.3288 E: 1634165.5003  
 EAST BOLT ON A FIRE HYDRANT BETWEEN WORDS UL AND LISTED AT THE SE CORNER OF THE BUSINESS 4849 S WEST ST.  
 EL= 1284.02
- BMK > 205  
 N: 1655670.9972 E: 1634172.8980  
 CHISELED SQUARE ON THE NORTH END OF A 24" RCP AT THE FIRST DRIVE SOUTH OF HOUSE #4959  
 EL= 1280.16
- BMK > 206  
 N: 1659603.0424 E: 1634177.9128  
 CITY OF WICHITA DISC ON THE NW CORNER OF THE CONCRETE PAD FOR THE LIFT STATION JUST NORTH OF THE NW PROPERTY OF STORAGE UNITS  
 EL= 1282.59
- BMK > 207  
 N: 1660282.9605 E: 1634079.9251  
 CHISELED SQUARE ON THE SOUTH END OF A 36" RCP AT THE MAIN DRIVE TO BUSINESS ADDRESS 4261 S. WEST ST.  
 EL= 1283.26
- BMK > 208  
 N: 1661126.6811 E: 1634074.2026  
 BOLT NEXT TO THE "T" IN ALBERT ON THE EAST SIDE OF THE FIRE HYDRANT ON THE NORTH SIDE OF THE DRIVE TO ROBERTS 4151 S. WEST ST.  
 EL= 1287.15

- BMK > 209  
 N: 1661877.6339 E: 1634140.3605  
 PUNCHED "X" ON THE NORTH RIM OF A KG&E MANHOLE ON THE NORTH SIDE OF THE DRIVE TO EVERGY SUBSTATION ±35' EAST OF THE EAST EDGE OF WEST ST.  
 EL= 1285.91
- BMK > 210  
 N: 1657907.5930 E: 1635331.0163  
 CHISELED SQUARE ON THE SOUTH END OF THE MEDIAN ON THE NORTH SIDE OF 47TH @ KESSLER  
 EL= 1282.79

SECTION CORNERS		
POINT	NORTHING	EASTING
301	1,654,272.7800	1,634,225.0700
302	1,656,939.1997	1,634,182.3586
303	1,659,584.6388	1,634,127.8408
304	1,662,234.9669	1,634,077.4872
305	1,656,894.2855	1,631,524.0504
306	1,656,980.8238	1,636,840.6569



**WEST STREET IMPROVEMENTS  
 FROM MACARTHUR ROAD TO  
 47TH ST. SOUTH**  
 CITY OF WICHITA

Issue:	

JOB NO.	210254-001
DATE	OCTOBER 2024
PM	TPA
DESIGNED BY	LGP
DRAWN BY	CP
CHECKED BY	KMS

HORIZONTAL AND VERTICAL CONTROL